

## ORIGINAL ARTICLE

# Assessment of TerraClass and MapBiomas data on legend and map agreement for the Brazilian Amazon biome

Alana Kasahara NEVES<sup>1,\*</sup> , Thales Sehn KÖRTING<sup>1</sup>, Leila Maria Garcia FONSECA<sup>1</sup>,  
Maria Isabel Sobral ESCADA<sup>1</sup>

<sup>1</sup> Instituto Nacional de Pesquisas Espaciais - INPE, Divisão de Processamento de Imagens - DPI, Avenida dos Astronautas 1758, Jardim da Granja, 12227-010 São José dos Campos, SP, Brazil

\* Corresponding author: [alana.neves@inpe.br](mailto:alana.neves@inpe.br);  <https://orcid.org/0000-0002-0301-944X>

## ABSTRACT

Reliable environmental monitoring and evaluation require high-quality maps of land use and land cover. For the Amazon biome, the TerraClass and MapBiomas projects apply different methodologies to create these maps. We evaluated the agreement between land cover and land use maps generated by TerraClass and MapBiomas (Collections 2 and 3) for the Brazilian Amazon biome, from 2004 to 2014. Specifically, we: (1) described both project legends based on the LCCS (Land Cover Classification System); (2) analyzed the differences between their classes; and (3) compared the mapping differences among the Brazilian states that are totally or partially covered by the Amazon biome. We compared the classifications with a per-pixel approach and performed an evaluation based on agreement matrices. The overall agreement between the projects was 87.4% (TerraClass x MapBiomas 2) and 92.0% (TerraClass x MapBiomas 3). We analyzed methodological differences to explain the disagreements in class identification. We conclude that using these maps together without a properly adapted legend is not recommended for the analysis of land use and land cover change. Depending on the application, one mapping system may be more suitable than the other.

**KEYWORDS:** land cover, classification system, remote sensing, PRODES, non-forest, geospatial analysis

## Avaliação dos dados do TerraClass e do MapBiomas acerca da legenda e concordância dos mapas para o bioma brasileiro Amazônia

### RESUMO

O monitoramento e a avaliação ambiental confiáveis necessitam mapas de alta qualidade de uso e cobertura da terra. Para o bioma Amazônia, os projetos TerraClass e MapBiomas usam diferentes metodologias para criar esses mapas. Nós avaliamos a concordância entre os produtos gerados pelo TerraClass e pelo MapBiomas (Coleções 2 e 3) para o bioma Amazônia, de 2004 a 2014. Mais especificamente: (1) descrevemos as legendas dos projetos com base no LCCS (Land Cover Classification System); (2) analisamos as diferenças entre as classes; e (3) comparamos as diferenças de mapeamento entre os estados brasileiros total ou parcialmente incluídos no bioma Amazônia. As classificações foram comparadas em uma abordagem pixel a pixel e a avaliação foi baseada em matrizes de concordância. A concordância global entre os projetos foi de 87.4% (TerraClass x MapBiomas 2) e 92.0% (TerraClass x MapBiomas 3). Analisamos as diferenças metodológicas entre os projetos para explicar as discordâncias existentes na identificação das classes. Concluímos que a utilização dos produtos dos dois projetos de forma complementar, sem uma apropriada adaptação de legendas, não é recomendada para a análise de mudança de uso e cobertura da terra. Dependendo da aplicação, um sistema de mapeamento pode ser mais adequado do que o outro.

**PALAVRAS-CHAVE:** cobertura da terra, sistema de classificação, sensoriamento remoto, PRODES, não-floresta, análise geoespacial

## INTRODUCTION

Monitoring Land Use and Land Cover Change (LULCC) and its dynamics is essential for a variety of scientific purposes and political strategies, which consequently leads to more efficient management of land resources. Reliable information about LULCC improves the evaluation of phenomena such as urban expansion, flooding, drought and desertification (Verburg *et al.*

*al.* 2011; Bontemps *et al.* 2012). This is specially important in areas of tropical rainforests, and the Amazon forest is a relevant example. The Amazon plays a key role in worldwide environmental processes, such as the carbon cycle, and can influence climate change (Phillips *et al.* 2009).

The deforestation dynamic in the Brazilian Amazon has been monitored with remote sensing images since

**CITE AS:** Neves, A.K.; Körtling, T.S.; Fonseca, L.M.G.; Escada, M.I.S. 2020. Assessment of TerraClass and MapBiomas data on legend and map agreement for the Brazilian Amazon biome. *Acta Amazonica* 50: 170-182.

1988 through the PRODES project (Brazilian Amazon Deforestation Monitoring Program – INPE 2019). By 2015, an area of 76,990,300 hectares of the Amazon had been deforested, which amounts to 19.2% of the total Amazon forest area (INPE 2016). The TerraClass project was created in 2010 to identify and quantify the main land use and land cover classes linked to deforestation and to map the LULC in the Amazon deforested areas (Almeida *et al.* 2016). More recently, since 2015, MapBiomass (Brazilian Annual Land Use and Land Cover Mapping Project) has also produced LULC maps for all Brazilian biomes (MAPBIOMAS 2017).

Maps from both projects have been widely applied to land use and land cover modeling and climate change research (e.g. Rufin *et al.* 2015; Crouzeilles *et al.* 2017; Müller-Hansen *et al.* 2017; Tyukavina *et al.* 2017). They also can be used to support the development of governmental projects and other initiatives (Brito 2017). However, each mapping system generates different areas and patterns for land use and land cover classes, and thus different trajectories. Consequently, distinct dynamics and impacts will be indicated by different products based on these maps, which are used for public policy planning, such as the estimation of ecosystem services (Kangas *et al.* 2018), soil quality assessment (Efthimiou and Psomiadis 2018), modeling of LULCC scenarios (Dalla-Nora *et al.* 2014) and initiatives related to REDD+ (Buurman *et al.* 2015).

Although the maps resulting from MapBiomass and TerraClass projects produce valuable LULCC information, they have been created using different algorithms and methodologies, hence, it is important to compare and evaluate their data

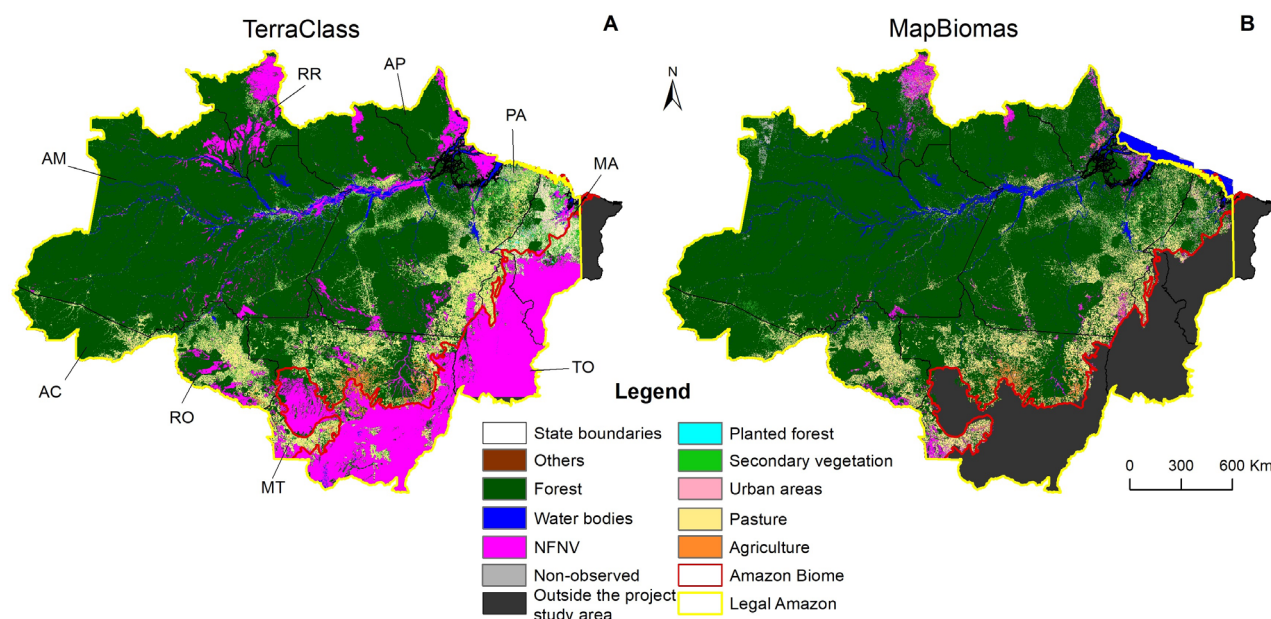
regarding their usefulness, potential and limitations for different goals. In this context, we provide a detailed evaluation of the agreement between the TerraClass and MapBiomass classifications. Specifically, we (1) describe both project legends based on the LCCS (Land Cover Classification System); (2) analyze the differences between their classes; and (3) compare the mapping differences among the Brazilian states that are totally or partially covered by the Amazon biome.

## MATERIAL AND METHODS

### Study area and products analyzed

The TerraClass project covers the Legal Amazon, an area of 510 million ha, comprising the nine Brazilian states covered wholly or in part by the Amazon biome: Acre, Amapá, Amazonas, Pará, Rondônia, Roraima, Mato Grosso, Tocantins and the western part of Maranhão. The MapBiomass project covers the Amazon biome, which excludes parts of Mato Grosso, Tocantins and Maranhão which are covered by other biomes. Figure 1 gives an overview of the differences between both areas covered. The Amazon biome was chosen as the study area for our analysis, as it is fully represented in both projects. Thus, all classes were analyzed solely for the Amazon biome.

TerraClass was created in 2010 by the Brazilian National Institute for Space Research (INPE) and the Brazilian Agriculture Research Corporation (Embrapa). It is a complement to PRODES and adds information about the past LULC spatial distribution and regional statistics in deforested areas. Currently, TerraClass products are available for 2004,



**Figure 1.** Land cover maps of the Amazon biome in Brazil according to TerraClass (A) and MapBiomass (Collection 2) (B) for 2014, reclassified according to Table 1. NFNV is the Non-forest natural vegetation class. This figure is in color in the electronic version.

2008, 2010, 2012 and 2014. TerraClass uses Landsat-like images (30 m spatial resolution) to identify the following classes: Urban area, Mining, Mosaic of uses, Annual crops, Herbaceous pasture, Shrubby pasture, Pasture with exposed soil, Regeneration with pasture, Secondary vegetation, Annual deforestation, Others and Non-observed area (Almeida *et al.* 2016). Forest, Hydrography, and Non-forest classes are also included in TerraClass products, but they are taken directly from the PRODES Project classification.

The TerraClass methodology includes image processing techniques, such as segmentation and Linear Spectral Mixture Model (Shimabukuro *et al.* 1998), to assist in map classification. However, most of its classification is conducted through visual interpretation. Only for the Annual crop class an automated classification is used to identify the targets based on the Normalized Difference Vegetation Index (NDVI) time series from MODIS images (De Faria *et al.* 2005; Rudorff *et al.* 2011; Arvor *et al.* 2013).

In 2015, MapBiomias was created through an initiative of the Greenhouse Gas Emissions Estimation System (SEEG) of the Climate Observatory (<http://www.observatoriodoclima.eco.br/>) as a fast and low-cost methodology to classify land use and land cover over the last decades. It is produced by a network of NGOs, universities and technology companies, each responsible for certain biomes or specific themes (Agriculture, Pasture and Coastal zone). They produce annual maps from 1985 onwards for all Brazilian biomes (MapBiomias 2017).

The classification data from MapBiomias is available by year. Four data collections, which were generated during different phases of the project, have already been released. Collection 1 had a simplified legend and produced maps for 2008 to 2015, while Collection 2 had an improved legend and methodology and extended the mapping period from 2000 to 2016. Collection 3 covered the period from 1985 to 2017, and Collection 4 included 2018. We used Collections 2 and 3 of the classification data for the Amazon biome. Herein, “MapBiomias 2” stands for MapBiomias Collection 2, “MapBiomias 3” for MapBiomias Collection 3, and “MapBiomias” for the joint use of Collections 2 and 3.

The MapBiomias methodology is fully automated and integrated with the Google Earth Engine. It also uses Landsat images, and its methodology involves the construction of a spectral library for performing Spectral Mixture Analysis (SMA). The fraction images resulting from the SMA are employed to calculate the Normalized Differencing Fraction Image (NDFI) (Souza Jr. *et al.* 2005). The SMA and NDFI features were used to build an empirical decision tree classification for MapBiomias 2. In MapBiomias 3, they were used in a Random Forest classifier (IMAZON 2017). For the Amazon biome, the classes identified in MapBiomias are presented in Table 1.

**Table 1.** Reclassification of TerraClass and MapBiomias 2 and 3 legends for the Brazilian Amazon biome.

| Adopted classes                      | TerraClass                | MapBiomias 2                  | MapBiomias 3   |
|--------------------------------------|---------------------------|-------------------------------|--|
| Forest                               | Forest                    | Dense forest                  | Forest formation   |
|                                      |                           | Open forest                   |  |
|                                      |                           | Degraded Forest               |  |
|                                      |                           | Flooded forest                |  |
|                                      |                           | Mangrove                      | Mangrove   |
| Water bodies                         | Hydrography               | Water bodies                  | Water<br>River, lake and ocean   |
| Planted forest                       | Reforestation             | Silviculture                  | Forest plantation  |
| Secondary vegetation                 | Secondary vegetation      | Secondary forest              | -  |
| Urban areas                          | Urban areas               | Urban infrastructure          | Urban infrastructure   |
| Pasture                              | Herbaceous pasture        | Pasture                       | Pasture  |
|                                      | Shrubby pasture           |                               |  |
|                                      | Regeneration with pasture |                               |  |
|                                      | Pasture with exposed soil |                               |  |
| Non-forest natural vegetation - NFNV | Non-forest                | Non-forest natural formations | Non-forest natural formation<br>Savanna formation<br>Grassland formation |
|                                      |                           | Non-forest natural wetlands   | Wetland  |
|                                      |                           | Other non-forest formation    | Other non-forest natural formation                                       |
|                                      |                           | Annual crops                  | Annual and perennial crop and Semi-perennial crop                        |
| Agriculture                          | Annual crops              | Mosaic of crops               | Beach and dune   |
|                                      |                           |                               | Other non-vegetated area   |
| Others                               | Others                    | Beaches and dunes             | Salt flat  |
| Non-observed                         | Non-observed areas        | Non-observed                  | Non-observed   |
| Mining                               | Mining                    | -                             | Mining   |

### Reclassification and product comparison

We used land cover maps from TerraClass and MapBiomias for 2004, 2008, 2010, 2012 and 2014, all at a 30 m spatial resolution. All classification maps are available at: [http://www.inpe.br/cra/projetos\\_pesquisas/dados\\_terraclass.php](http://www.inpe.br/cra/projetos_pesquisas/dados_terraclass.php) for the TerraClass data, and at <https://mapbiomias.org/download> for the MapBiomias data. They were downloaded in raster format and referenced in WGS84 (EPSG: 4326). Each product has its own classification legend, so it was necessary to reclassify them to reconcile the legends (Table 1). Equivalent classes were identified, and some classes had to be grouped into a

single class. For example, TerraClass has four types of pastures, which were reclassified as only Pasture. There were some classes (Agriculture or pasture from MapBiomass and Mosaic of uses, Secondary vegetation, Mining and Annual deforestation from TerraClass) that were analyzed separately, as no equivalence was found. Through the Mosaic of uses class, TerraClass aims to represent small areas (considering the image spatial resolution), that might include household agriculture and traditional cattle ranching (Almeida *et al.* 2016).

All adopted classes (Table 1) were described using the Land Cover Classification System (LCCS) to standardize class descriptions. Thus, data produced through different methods could be used and compared, regardless of scale, level of detail, or geographical location. This system uses a set of rules based on the physiognomy and the stratification of the biotic and abiotic elements (FAO 2016). Each land cover class is composed of one or more horizontal macro patterns (arrangements of landscape elements). There are also vertical patterns, or strata, that characterize the horizontal patterns of the landscape. The strata are described by element properties, such as leaf phenology and tree height. The horizontal pattern must have a mandatory stratum and may have other optional ones.

The spatial overlaps considering the entire study area and a per-pixel comparison between the reclassified maps were performed for each year, using a Boolean approach (Herold *et al.* 2008; Tchuenté *et al.* 2011). From this spatial analysis, maps were generated showing the areas of agreement among the adopted classes for two cases: TerraClass versus MapBiomass 2, and TerraClass versus MapBiomass 3. The areas that were classified as Non-observed in either of the maps were considered as disagreement, and so were the minority classes cited above.

Both whole maps were cross-tabulated, resulting in agreement matrices, which were calculated in the same way as a standard confusion matrix, but first considering each of the MapBiomass maps as reference datasets and then considering the TerraClass map as the reference dataset. Pixels classified as the same class (main diagonal) were considered as agreement and the remaining were considered as disagreement. From the cross tabulations and from the metrics, we analyzed the differences in the products among the adopted classes in each Amazon biome state. All the processing steps were performed in R language (Ihaka and Gentleman 1996).

From the agreement matrix, it was possible to generate the metrics of Overall Agreement (OA), TerraClass Agreement (TCA) and MapBiomass Agreement (MBA). OA was the percentage of total observed pixels that agreed. TCA was the percentage of pixels that agreed with MapBiomass as reference. This metric was used to evaluate the TerraClass mapping. MBA was the percentage of pixels that agreed with TerraClass as reference. This metric was used to evaluate the MapBiomass mapping. Both TCA and MBA were calculated for each class.

## RESULTS

The reconciled legend reclassification (Table 1) was described in terms of LCCS (Table 2). Forest had only one horizontal pattern, with a maximum of four vertical patterns. Trees were mandatory in this class, and one of the strata could be composed of water bodies, representing the Flooded forest class of MapBiomass (Table 2a). The Non-forest natural vegetation (NFNV) represented mostly vegetation patches typical of other biomes (such as Cerrado, the Brazilian savanna) that persist within the Amazon biome (Table 2g).

The Agriculture class had only one stratum, which was composed of graminoids, forbs or bare soil. Every element in this pattern was dependent of the temporal sequence of crop phenological cycles (Table 2h). The class Others had only one stratum, which was composed of loose and shifting sands (Table 2i). It represented the Beaches and dunes class of MapBiomass and the Others class of TerraClass (land cover categories such as river beaches and sandbars) (Coutinho *et al.* 2013).

After the reclassification of the maps, we converted the number of pixels of each adopted class into area units ( $\text{km}^2 \cdot 10^{-3}$ ) for the five years (Figure 2). Forest is not represented in Figure 2 because its area was much larger than that of the other classes. Pasture was the main land use in the Amazon in all years according to both systems, but the mapped area was usually larger in TerraClass. Water bodies, Urban areas and Agriculture had similar areas in both projects, but agreement was not high.

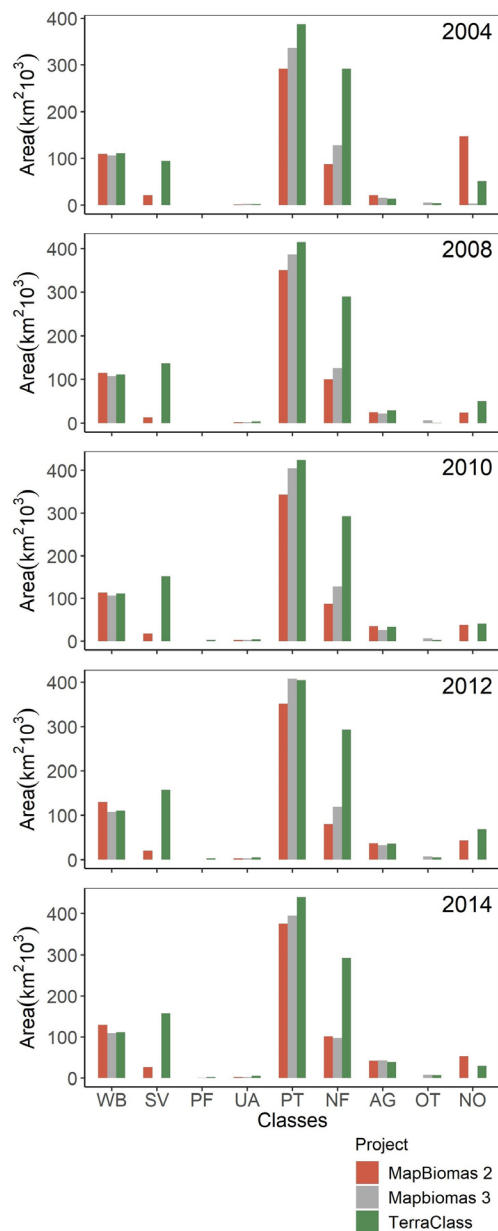
TerraClass began to classify Planted forests in 2010, so this class did not appear for this project in 2004 and 2008. In MapBiomass, a time series of images is analyzed to perform a classification with few Non-observed areas, caused by clouds and cloud shadows (IMAZON 2017), while TerraClass uses images with the least cloud cover from the dry season. Compared with TerraClass, MapBiomass usually had fewer Non-observed areas, specially MapBiomass 3, which has considerably smaller Non-observed areas than MapBiomass 2 and TerraClass.

The overall agreement between the projects was 87.4% (TerraClass x MapBiomass 2) and 92.0% (TerraClass x MapBiomass 3). Forest had the highest agreement and was always close to or higher than 90%. A small percentage of the Forest class in MapBiomass 2 was classified as NFNV (4.1%), Secondary vegetation (3.1%) and Pasture (2.8%) by TerraClass. Considering the Forest class in MapBiomass 3, 4.2% and 2.2% of the area was classified as NFNV and Pasture by TerraClass, respectively. Planted forest in MapBiomass 2 had 0% agreement with TerraClass, but in MapBiomass 3, agreement was higher at 6.9% and 71.4%, respectively (Tables 3 and 4).

The exclusion of Forest modified the overall agreement from 87.4% to 81.6% (MapBiomass 2 x TerraClass) and from 92.0% to 92.3% (MapBiomass 3 x TerraClass). This meant that, despite the Forest high agreement, this class was also a source of confusion for other classes. For example, 80.3% of the TerraClass Secondary vegetation was classified as Forest

**Table 2.** Adopted classes following the reconciled legend reclassification (see Table 1) described in terms of the Land Cover Classification System (LCCS).

|   |  |
|---|--|
| a | Forest   |
|   | Horizontal pattern 1:  |
|   | - Stratum 1 (mandatory): trees – natural or semi-natural vegetation, leaf phenology = evergreen and leaf type = broadleaved;                                 |
|   | - Stratum 2 (optional): shrubs – natural or semi-natural vegetation;   |
|   | - Stratum 3 (optional): gramineae – natural or semi-natural vegetation;  |
|   | - Stratum 4 (optional): water bodies.  |
| b | Water bodies   |
|   | Horizontal pattern 1:  |
|   | - Stratum 1 (mandatory): water bodies – position: above surface.   |
| c | Planted forest   |
|   | Horizontal pattern 1:  |
|   | - Stratum 1 (mandatory): trees – cultivated and managed vegetation, planted forest;  |
|   | - Stratum 2 (optional): bare soil;   |
|   | - Stratum 3 (optional): herbaceous growth forms.   |
| d | Secondary vegetation   |
|   | Horizontal pattern 1:  |
|   | - Stratum 1 (mandatory): woody growth forms – natural, or semi-natural vegetation, height up to 3m;  |
|   | - Stratum 2 (optional): herbaceous growth forms – natural, or semi-natural vegetation.   |
| e | Urban areas  |
|   | Horizontal pattern 1:  |
|   | - Stratum 1 (mandatory): buildings;  |
|   | - Stratum 2 (optional): woody growth forms;  |
|   | - Stratum 3 (optional): herbaceous growth forms.   |
|   | Horizontal pattern 2:  |
|   | - Stratum 1 (mandatory): roads.  |
| f | Pasture  |
|   | Horizontal pattern 1:  |
|   | - Stratum 1 (mandatory): gramineae – cultivated and managed vegetation;  |
|   | - Stratum 2 (optional): shrubs – natural or semi-natural vegetation;   |
|   | - Stratum 3 (optional): trees – cover between 0 and 4%.  |
| g | Non-forest natural vegetation (NFNV)   |
|   | Horizontal pattern 1:  |
|   | - Stratum 1 (mandatory): trees – cover between 20 and 70%, height up to 5m and leaf phenology = deciduous;   |
|   | - Stratum 2 (optional): herbaceous growth forms.   |
| h | Agriculture  |
|   | Horizontal pattern 1:  |
|   | - Stratum 1 (mandatory): gramineae, forbs or bare soil – sequential temporal relationship, cultivated and managed vegetation, orchard and other plantations. |
| i | Others   |
|   | Horizontal pattern 1:  |
|   | - Stratum 1 (mandatory): loose and shifting sands.   |



**Figure 2.** Pixel count of each LULC class for the Brazilian Amazon biome in 2004, 2008, 2010, 2012 and 2014. The following classes were analyzed: Water bodies (WB), Secondary vegetation (SV), Planted forest (PF), Urban areas (UA), Pasture (PT), Non-forest natural vegetation (NF), Agriculture (AG), Others (OT) and Non-Observed (NO). This figure is in color in the electronic version.

by MapBiomass 2 (Table 3). Therefore, the low agreement observed for Secondary vegetation (3.6% and 26.5%, respectively) (Tables 3 and 4) could have been caused by the methodological differences between the projects. Whenever a Forest area is converted into deforestation, it enters into a mask of deforestation in the PRODES mapping, which is used as the basis for TerraClass mapping. Even if the area regrows, it is classified as Secondary vegetation and cannot be considered as Forest again.

**Table 3.** TerraClass agreement (%) for the Brazilian Amazon Biome over five years considering MapBiomas 2 or MapBiomas 3 as reference. SV is Secondary vegetation and NFNV is Non-forest natural vegetation.

|             |                | TerraClass x MapBiomas 2 |              |                |        |             |         |       |             |        |  |
|-------------|----------------|--------------------------|--------------|----------------|--------|-------------|---------|-------|-------------|--------|--|
|             |                | TerraClass               |              |                |        |             |         |       |             |        |  |
|             |                | Forest                   | Water bodies | Planted forest | SV     | Urban areas | Pasture | NFNV  | Agriculture | Others |  |
| MapBiomas 2 | Forest         | 98.76                    | 20.42        | 81.28          | 80.34  | 21.57       | 25.30   | 54.33 | 8.11        | 52.18  |  |
|             | Water bodies   | 0.39                     | 77.86        | 0.36           | 0.60   | 2.31        | 0.50    | 6.75  | 0.15        | 15.25  |  |
|             | Planted forest | 0.00                     | 0.00         | 0.00           | 0.00   | 0.00        | 0.00    | 0.00  | 0.00        | 0.00   |  |
|             | SV             | 0.25                     | 0.25         | 6.91           | 3.56   | 0.37        | 1.06    | 0.24  | 0.71        | 0.80   |  |
|             | Urban area     | 0.00                     | 0.01         | 0.04           | 0.03   | 41.18       | 0.09    | 0.08  | 0.37        | 0.10   |  |
|             | Pasture        | 0.40                     | 0.66         | 9.89           | 13.96  | 28.75       | 69.74   | 6.77  | 34.90       | 21.72  |  |
|             | NFNV           | 0.17                     | 0.57         | 0.72           | 1.23   | 3.93        | 1.92    | 28.57 | 1.01        | 9.12   |  |
|             | Agriculture    | 0.03                     | 0.23         | 0.80           | 0.28   | 1.86        | 1.39    | 3.26  | 54.75       | 0.81   |  |
|             | Others         | 0.00                     | 0.00         | 0.00           | 0.00   | 0.03        | 0.00    | 0.00  | 0.00        | 0.02   |  |
|             |                | TerraClass x MapBiomas 3 |              |                |        |             |         |       |             |        |  |
|             |                | TerraClass               |              |                |        |             |         |       |             |        |  |
|             |                | Forest                   | Water bodies | Planted forest | Mining | Urban areas | Pasture | NFNV  | Agriculture | Others |  |
| MapBiomas 3 | Forest         | 99.01                    | 20.03        | 74.84          | 34.45  | 21.94       | 18.77   | 51.53 | 8.45        | 56.46  |  |
|             | Water bodies   | 0.32                     | 78.55        | 0.10           | 5.66   | 1.51        | 0.16    | 3.09  | 0.09        | 12.27  |  |
|             | Planted forest | 0.00                     | 0.00         | 6.88           | 0.00   | 0.00        | 0.01    | 0.01  | 0.04        | 0.01   |  |
|             | Mining         | 0.00                     | 0.01         | 0.01           | 6.24   | 0.07        | 0.00    | 0.01  | 0.00        | 0.02   |  |
|             | Urban area     | 0.00                     | 0.02         | 0.02           | 0.77   | 49.54       | 0.03    | 0.05  | 0.04        | 0.14   |  |
|             | Pasture        | 0.44                     | 0.49         | 15.97          | 32.84  | 18.60       | 78.82   | 4.80  | 14.57       | 21.51  |  |
|             | NFNV           | 0.15                     | 0.45         | 0.20           | 8.74   | 1.75        | 0.97    | 39.23 | 0.21        | 7.29   |  |
|             | Agriculture    | 0.02                     | 0.00         | 0.63           | 0.51   | 1.14        | 0.92    | 0.65  | 75.62       | 0.27   |  |
|             | Others         | 0.06                     | 0.45         | 1.37           | 10.80  | 5.49        | 0.32    | 0.63  | 0.99        | 2.03   |  |

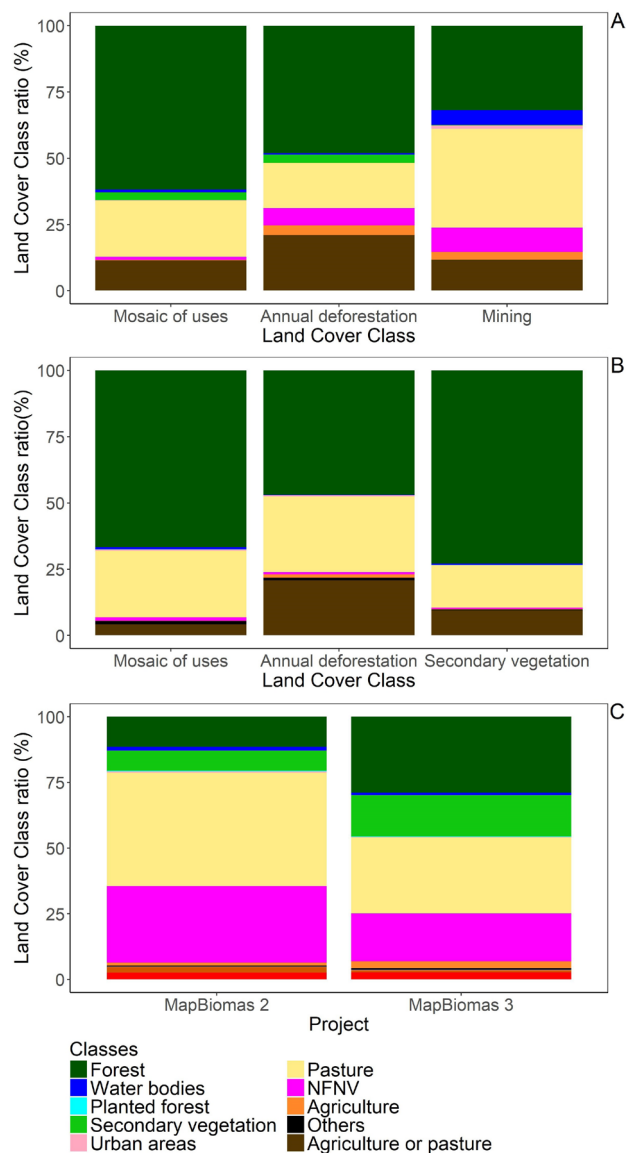
Regarding the analysis of minority classes, Agriculture or pasture (Figure 3c) can be considered as a mixed class, but in MapBiomas 2 most corresponded to Pasture, NFNV and Forest; in MapBiomas 3 mostly to Forest, Pasture, NFNV and Secondary vegetation. The identification of targets of the Mosaic of uses class in TerraClass was prone to generate classification errors due to the spatial resolution of the images. According to MapBiomas 2, these areas were composed mainly of Forest (61.9%), Pasture (21.1%) and Agriculture or pasture (11.4%) (Figure 3a). In MapBiomas 3 (Figure 3b), the Mosaic of uses was also mainly composed of Forest (66.7%), Pasture (25.2%) and Agriculture or pasture (4.2%). Specially in MapBiomas 3, which did not have a Secondary

**Table 4.** MapBiomas 2 and MapBiomas 3 agreement (%) for the Brazilian Amazon Biome over five years considering TerraClass as reference. SV is Secondary vegetation and NFNV is Non-forest natural vegetation.

|            |                | MapBiomas 2 x TerraClass |              |                |        |             |         |       |             |        |  |
|------------|----------------|--------------------------|--------------|----------------|--------|-------------|---------|-------|-------------|--------|--|
|            |                | MapBiomas 2              |              |                |        |             |         |       |             |        |  |
|            |                | Forest                   | Water bodies | Planted forest | SV     | Urban areas | Pasture | NFNV  | Agriculture | Others |  |
| TerraClass | Forest         | 89.25                    | 10.22        | 23.98          | 43.81  | 1.64        | 3.90    | 5.96  | 2.59        | 45.06  |  |
|            | Water bodies   | 0.65                     | 72.33        | 0.00           | 1.54   | 0.69        | 0.23    | 0.70  | 0.81        | 19.40  |  |
|            | Planted forest | 0.04                     | 0.00         | 0.00           | 0.58   | 0.03        | 0.05    | 0.01  | 0.04        | 0.00   |  |
|            | SV             | 3.08                     | 0.67         | 2.38           | 26.54  | 1.55        | 5.67    | 1.82  | 1.19        | 1.58   |  |
|            | Urban area     | 0.02                     | 0.07         | 0.00           | 0.08   | 65.72       | 0.32    | 0.16  | 0.21        | 8.67   |  |
|            | Pasture        | 2.77                     | 1.58         | 5.61           | 22.62  | 15.83       | 81.11   | 8.11  | 16.92       | 0.39   |  |
|            | NFNV           | 4.07                     | 14.64        | 0.00           | 3.50   | 9.65        | 5.37    | 82.55 | 27.05       | 17.85  |  |
|            | Annual crop    | 0.07                     | 0.04         | 68.03          | 1.17   | 4.74        | 3.11    | 0.33  | 51.10       | 0.00   |  |
|            | Others         | 0.05                     | 0.45         | 0.00           | 0.16   | 0.15        | 0.24    | 0.36  | 0.09        | 7.05   |  |
|            |                | MapBiomas 3 x TerraClass |              |                |        |             |         |       |             |        |  |
|            |                | MapBiomas 3              |              |                |        |             |         |       |             |        |  |
|            |                | Forest                   | Water bodies | Planted forest | Mining | Urban areas | Pasture | NFNV  | Agriculture | Others |  |
| TerraClass | Forest         | 92.75                    | 9.58         | 4.43           | 7.46   | 3.06        | 4.07    | 4.00  | 2.37        | 30.45  |  |
|            | Water bodies   | 0.66                     | 81.28        | 0.09           | 8.84   | 1.11        | 0.16    | 0.42  | 0.02        | 8.20   |  |
|            | Planted forest | 0.03                     | 0.00         | 71.45          | 0.15   | 0.01        | 0.07    | 0.00  | 0.03        | 0.32   |  |
|            | Mining         | 0.01                     | 0.04         | 0.01           | 61.97  | 0.27        | 0.08    | 0.06  | 0.02        | 1.47   |  |
|            | Urban area     | 0.02                     | 0.06         | 0.02           | 1.29   | 83.95       | 0.21    | 0.06  | 0.16        | 3.61   |  |
|            | Pasture        | 2.17                     | 0.60         | 10.06          | 3.86   | 4.83        | 90.10   | 3.20  | 13.22       | 20.94  |  |
|            | NFNV           | 4.23                     | 8.02         | 6.08           | 15.59  | 6.05        | 3.90    | 92.00 | 6.63        | 29.21  |  |
|            | Agriculture    | 0.07                     | 0.02         | 7.70           | 0.02   | 0.50        | 1.19    | 0.05  | 77.51       | 4.60   |  |
|            | Others         | 0.06                     | 0.40         | 0.16           | 0.82   | 0.22        | 0.22    | 0.21  | 0.04        | 1.20   |  |

vegetation class, Forest could include some areas of Secondary vegetation. Thus, part of the 66.7% of Forest could represent areas of Secondary vegetation that compose the Mosaic of uses. The TerraClass Secondary vegetation was mainly classified in MapBiomas 3 as Forest (73.0%), Pasture (15.9%) and Agriculture or pasture (9.5%).

The Mining class exists in the MapBiomas 2 legend, although it is not present in the maps of the Amazon biome, so TerraClass Mining areas were classified by MapBiomas mainly as Pasture, Forest and NFNV (Figure 3a). The Annual deforestation in TerraClass indicates recently deforested areas with no defined land use at this stage (Almeida *et al.* 2016). In MapBiomas 2, these areas were classified as Forest



**Figure 3.** Analysis of the classes with non-reconcilable legends. A – MapBiomas 2 classes classified as Mosaic of uses, Mining and Annual deforestation areas by TerraClass; B – MapBiomas 3 classes classified as Mosaic of uses, Secondary vegetation and Annual deforestation areas by TerraClass; C – MapBiomas Agriculture or Pasture areas and their classification in the TerraClass mapping. This figure is in color in the electronic version.

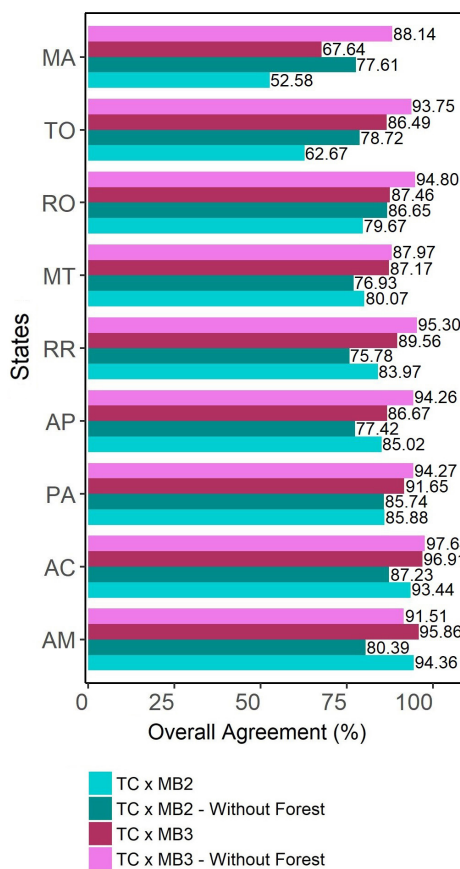
(48.2%), Agriculture or pasture (21.0%) or Pasture (17.0%). In MapBiomas 3, they were also classified as Forest (46.9%), Pasture (28.5%) and Agriculture or pasture (20.8%).

Most states had an overall agreement higher than 80% (Figure 4). Forest had a low agreement (MBA = 27.5% for TerraClass x MapBiomas 2; MBA = 55.5% for TerraClass x MapBiomas 3) in Tocantins only (Table 5). Large areas of agriculture in Mato Grosso reflected in a superior agreement in the Agriculture class (TCA = 60.1% and MBA = 70.1% for

TerraClass x MapBiomas 2; TCA = 81.2% and MBA = 77.4% for TerraClass x MapBiomas 3). Likewise, Roraima had large areas of NFNV on Mount Roraima, and the agreement for this class was higher than for the other states (TCA = 46.5% and MBA = 97.0% for TerraClass x MapBiomas 2; TCA = 70.6% and MBA = 96.2% for TerraClass x MapBiomas 3) (Table 5).

Although the highest values of OA occurred in the states with larger Forest areas (Amazonas, Acre and Pará) (Figure 4), the exclusion of Forest in the calculation of OA had no large impact in most states, which confirmed that Forest was also a source of confusion for other classes. In Maranhão and Tocantins, OA increased by more than 10% because these states had smaller properties, which may have led to confusion even in the visual interpretation. Therefore, excluding one class (Forest) reduced the confusion among the other classes, such as Secondary vegetation and NFNV.

Regarding the spatialization of the agreement areas, there was a concentration of Non-observed areas in the northern portion of the biome, near the Equator, where there is a higher cloud concentration (Figure 5). Large consolidated areas of

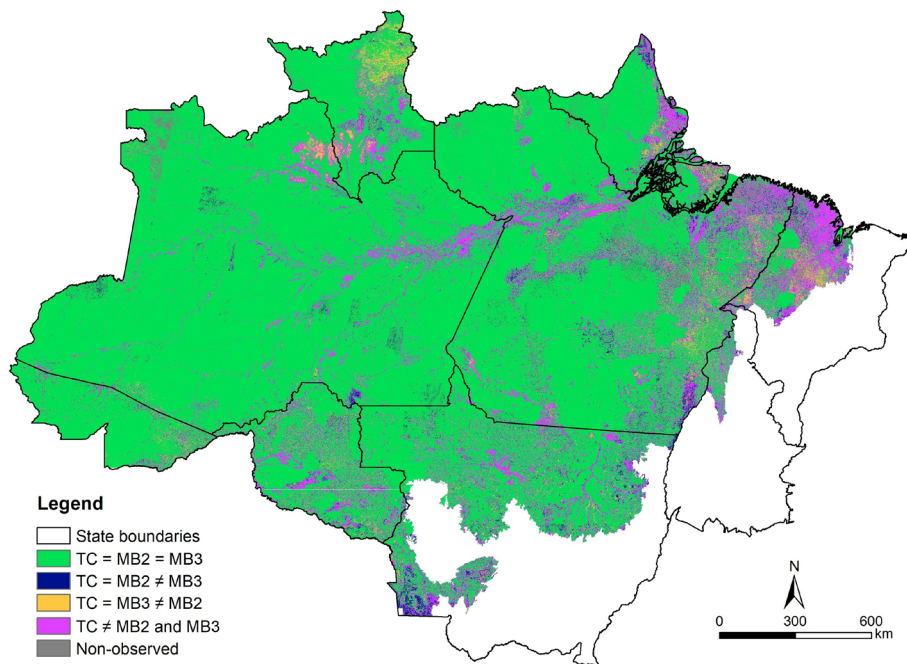


**Figure 4.** Overall agreement (%) between TerraClass and MapBiomas for each Brazilian Amazonian state, including and excluding the Forest class. State acronyms are: Maranhão (MA), Tocantins (TO), Rondônia (RO), Mato Grosso (MT), Roraima (RR), Amapá (AP), Pará (PA), Acre (AC), Amazonas (AM). This figure is in color in the electronic version.

**Table 5.** Agreement (%) assessment between TerraClass and MapBiomass 2 and 3 for Legal Amazon states in Brazil in the studied years. TCA is the TerraClass Agreement when MapBiomass is considered as reference. MBA is the MapBiomass Agreement when TerraClass is considered as reference. SV is Secondary vegetation and NFNV is Non-forest natural vegetation.

|               |             | TerraClass x MapBiomass 2 |              |                |        |             |         |       |             |        |      |
|---------------|-------------|---------------------------|--------------|----------------|--------|-------------|---------|-------|-------------|--------|------|
|               |             | Classes                   |              |                |        |             |         |       |             |        |      |
|               |             | Forest                    | Water bodies | Planted forest | SV     | Urban areas | Pasture | NFNV  | Agriculture | Others |      |
| Amazon states | Acre        | TCA                       | 98.04        | 22.12          | 0.00   | 2.90        | 34.46   | 72.78 | 0.01        | 0.00   | 0.00 |
|               |             | MBA                       | 95.72        | 13.54          | 0.00   | 7.21        | 83.44   | 79.46 | 0.04        | 0.00   | 0.00 |
|               | Amazonas    | TCA                       | 99.28        | 69.39          | 0.00   | 5.18        | 37.58   | 41.20 | 12.50       | 0.20   | 0.00 |
|               |             | MBA                       | 95.56        | 70.13          | 0.00   | 22.20       | 86.90   | 67.98 | 83.46       | 0.05   | 0.00 |
|               | Amapá       | TCA                       | 99.10        | 86.17          | 0.00   | 1.50        | 58.93   | 1.09  | 26.30       | 0.28   | 0.00 |
|               |             | MBA                       | 86.46        | 65.34          | 0.00   | 4.76        | 39.76   | 27.45 | 93.21       | 0.00   | 0.00 |
|               | Maranhão    | TCA                       | 95.11        | 80.64          | 0.00   | 3.38        | 26.65   | 49.05 | 17.22       | 9.48   | 0.00 |
|               |             | MBA                       | 41.34        | 72.37          | 0.00   | 28.94       | 80.22   | 81.43 | 57.70       | 2.87   | 0.00 |
|               | Mato Grosso | TCA                       | 97.40        | 59.21          | 0.00   | 0.87        | 55.88   | 76.92 | 28.51       | 60.11  | 0.00 |
|               |             | MBA                       | 83.17        | 40.22          | 0.00   | 30.46       | 49.07   | 76.48 | 65.23       | 70.14  | 0.00 |
|               | Pará        | TCA                       | 98.67        | 87.62          | 0.00   | 4.71        | 40.07   | 66.96 | 28.85       | 7.87   | 0.00 |
|               |             | MBA                       | 86.91        | 85.58          | 0.00   | 30.95       | 77.58   | 83.68 | 82.13       | 6.07   | 0.00 |
|               | Rondônia    | TCA                       | 97.37        | 71.63          | 0.00   | 2.49        | 53.69   | 82.49 | 27.22       | 35.84  | 0.00 |
|               |             | MBA                       | 78.32        | 54.41          | 0.00   | 31.37       | 70.30   | 84.53 | 88.42       | 60.36  | 0.00 |
|               | Roraima     | TCA                       | 99.23        | 84.87          | 0.00   | 4.67        | 27.21   | 3.62  | 46.51       | 12.37  | 0.00 |
|               |             | MBA                       | 86.21        | 38.20          | 0.00   | 26.69       | 4.68    | 89.40 | 96.96       | 0.02   | 0.00 |
|               | Tocantins   | TCA                       | 90.54        | 84.04          | 0.00   | 1.02        | 17.88   | 77.45 | 16.49       | 43.92  | 0.00 |
|               |             | MBA                       | 27.53        | 86.60          | 0.00   | 34.95       | 31.36   | 87.19 | 27.27       | 1.25   | 0.00 |
|               |             | TerraClass x MapBiomass 3 |              |                |        |             |         |       |             |        |      |
|               |             | Classes                   |              |                |        |             |         |       |             |        |      |
|               |             | Forest                    | Water bodies | Planted forest | Mining | Urban areas | Pasture | NFNV  | Agriculture | Others |      |
| Amazon states | Acre        | TCA                       | 98.79        | 26.70          | 0.00   | 0.00        | 44.42   | 80.18 | 0.40        | 0.00   | 2.98 |
|               |             | MBA                       | 98.01        | 14.98          | 0.00   | 0.00        | 89.98   | 88.51 | 1.37        | 0.00   | 1.10 |
|               | Amazonas    | TCA                       | 99.42        | 70.28          | 0.00   | 1.70        | 59.26   | 56.07 | 26.51       | 3.42   | 2.16 |
|               |             | MBA                       | 96.58        | 80.00          | 0.00   | 8.17        | 87.43   | 85.16 | 89.04       | 91.98  | 0.92 |
|               | Amapá       | TCA                       | 99.43        | 89.91          | 5.65   | 4.05        | 58.36   | 0.50  | 33.29       | 0.00   | 1.44 |
|               |             | MBA                       | 86.35        | 83.52          | 89.06  | 39.87       | 42.52   | 57.44 | 94.61       | 0.00   | 0.77 |
|               | Maranhão    | TCA                       | 96.57        | 80.43          | 12.67  | 1.70        | 48.59   | 61.78 | 10.68       | 30.87  | 3.04 |
|               |             | MBA                       | 55.01        | 77.34          | 84.74  | 36.34       | 83.66   | 89.47 | 70.90       | 88.38  | 3.56 |
|               | Mato Grosso | TCA                       | 97.75        | 62.34          | 5.92   | 0.07        | 51.79   | 84.15 | 25.77       | 81.25  | 0.44 |
|               |             | MBA                       | 88.57        | 48.37          | 24.83  | 3.22        | 86.50   | 86.98 | 86.30       | 77.38  | 0.26 |
|               | Pará        | TCA                       | 99.04        | 88.68          | 3.71   | 8.32        | 43.48   | 75.58 | 37.97       | 32.71  | 1.91 |
|               |             | MBA                       | 91.94        | 88.47          | 63.33  | 70.57       | 88.46   | 92.32 | 89.11       | 79.26  | 1.02 |
|               | Rondônia    | TCA                       | 97.58        | 75.73          | 0.00   | 13.49       | 56.09   | 90.93 | 28.12       | 60.46  | 2.05 |
|               |             | MBA                       | 85.85        | 69.97          | 0.00   | 91.60       | 92.64   | 91.49 | 94.34       | 83.34  | 2.87 |
|               | Roraima     | TCA                       | 98.80        | 67.27          | 0.00   | 0.00        | 48.47   | 37.74 | 70.53       | 15.59  | 2.77 |
|               |             | MBA                       | 88.91        | 40.38          | 0.00   | 0.00        | 23.88   | 88.08 | 96.23       | 3.10   | 0.65 |
|               | Tocantins   | TCA                       | 93.23        | 91.54          | 0.00   | 11.81       | 50.50   | 92.22 | 17.58       | 41.03  | 1.66 |
|               |             | MBA                       | 55.54        | 88.99          | 0.00   | 47.41       | 67.70   | 93.92 | 73.84       | 41.39  | 1.19 |





**Figure 5.** Spatialization of the agreement in class identification among TerraClass (TC), MapBiomas 2 (MB2) and MapBiomas 3 (MB3) maps of the Amazon biome in Brazil. This figure is in color in the electronic version.

disagreement occurred close to the Amazonas River channel in eastern Amapá and southwestern Roraima, most of which corresponded to TerraClass NFNV that were mapped into other classes by MapBiomas. In Maranhão, Tocantins and the northeastern Pará, there was a high concentration of small polygons, and the disagreement between the two projects was also very visible. Close to the Amazonas River channel and in northeastern Pará, there were also large areas of Secondary vegetation that showed disagreement between the projects.

## DISCUSSION

The purpose of this study was not to determine which project performed the highest-quality mapping. The assessment of one product with the other as a reference was conducted to evaluate the correspondence between the projects and, in doing so, to analyse whether the LULC classes had the same meanings in TerraClass and in MapBiomas. The per-pixel assignment of Pasture as the largest area (when not considering Forest) in comparison to other classes agrees with other studies (IBGE 2006; INPE 2014). The area assigned to Pasture cannot be directly associated with the presence of livestock, as pasture areas in the Amazon are related not only to cattle ranching, but also to land speculation (Mertens *et al.* 2002).

The use of a time series is helpful in the identification of agricultural areas due to the seasonal patterns of the target areas (Esquerdo *et al.* 2011). TerraClass uses the MODIS NDVI time series for identification of agricultural areas (Almeida *et al.* 2016), while MapBiomas (MAPBIOMAS 2017) uses

Landsat images from four different dates (start and end of the growing and off seasons) to calculate the maximum and minimum Enhanced Vegetation Index 2 (EVI2) for the Crop Enhanced Index (CEI) (Rizzi *et al.* 2009) and to obtain a classified image of the agricultural areas. Likely due to these differential approaches, the agreement for Agriculture was only near 50% between TerraClass and MapBiomas 2, and below 80% between TerraClass and MapBiomas 3.

TerraClass is based on the PRODES deforestation mapping, which considers only the deforestation of primary forest and classifies all regeneration areas as Secondary vegetation. This restriction does not exist in MapBiomas, so that, as a result, TerraClass mapped many more Secondary vegetation areas than did MapBiomas 2. There was no Secondary vegetation class for MapBiomas 3. On the other hand, the Forest class in MapBiomas is analyzed separately each year, allowing the estimation of forest areas for a longer period and the analysis of LULCC dynamics for a larger area (all Brazilian biomes). However, MapBiomas 2 maps included regeneration areas in the Forest class and lacked a clear definition of when Secondary vegetation turns into Forest. This method could generate more uncertainty in estimations of the amount of carbon emitted by deforestation over time.

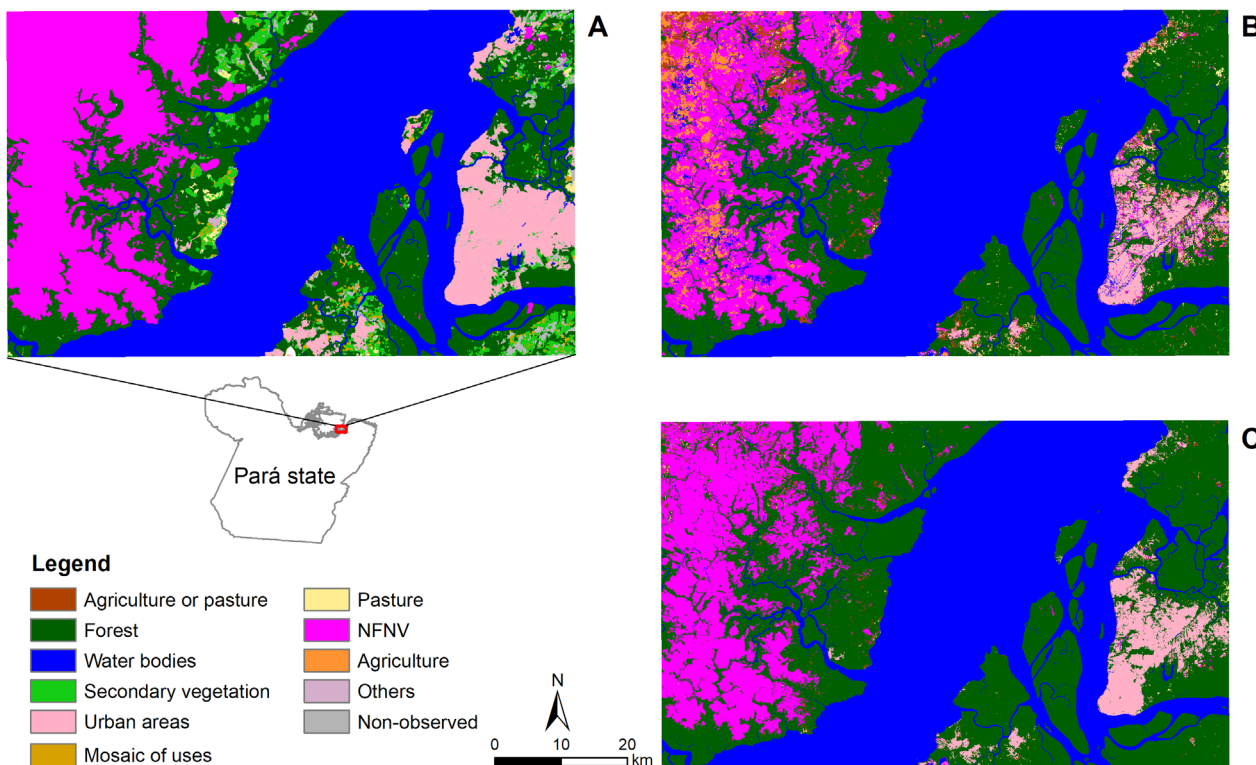
The TerraClass mapping system generates consolidated regions (polygons) because some of its classes are mapped by visual interpretation, while MapBiomas has a fully automated per-pixel classification. Thus, in the polygons classified by TerraClass, MapBiomas identifies pixels of other classes,

such as Agriculture or pasture in areas of NFNV or Forest in Urban areas (Figure 6). The much larger TerraClass NFNV in comparison to MapBiomas may be due to that the MapBiomas Forest class was more inclusive than the TerraClass Forest class. This does not mean that the MapBiomas mapping is more detailed than TerraClass, once the projects were created with different purposes. TerraClass, by being a complement to PRODES and a governmental project, focuses on discriminating the LULC in the Amazon deforested areas and does not map NFNV, which is taken from PRODES. The classification of NFNV is used as a mask and does not change over the years. It is important to note that TerraClass does not intend to map different kinds of land uses within the NFNV areas. On the other hand, MapBiomas was conceived to provide a historical series of LULC maps for the entire Brazilian territory. Thus, NFNV is mapped annually in this project. Nevertheless, we kept the comparison between the NFNV from TerraClass and from MapBiomas in order to make available some information regarding the differences in LULC information provided by the projects. If we calculate OA for all classes excluding NFNV (as we previously did with Forest), the OA would reach 91.8% (MapBiomas 2) or 96.1% (MapBiomas 3) for the five study years. The comparison with the OA considering all classes of 87.4% (MapBiomas

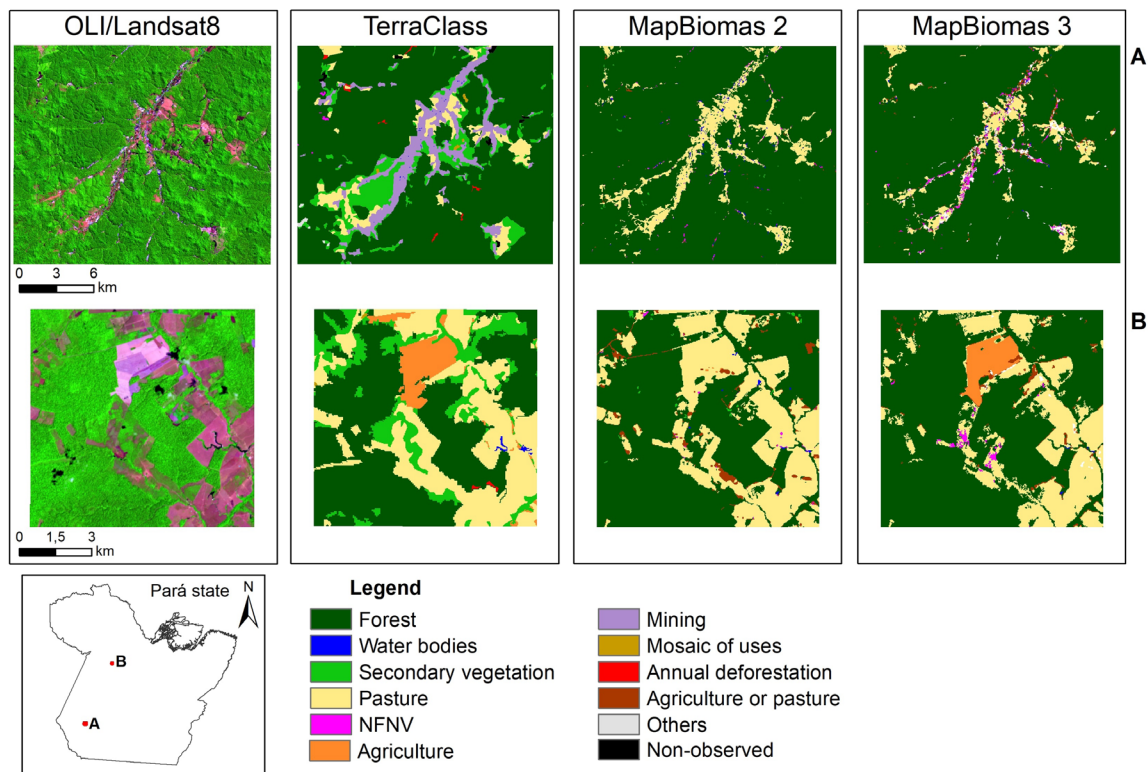
2) or 92.0% (MapBiomas 3) confirms that NFNV can be an important source of disagreement between both projects.

Among several possible reasons for the variation in class agreement, we highlight that each Brazilian state of the Amazon biome has a particular spatial configuration and land use composition and diversity, depending on political and economic factors, among others. In general, the classes in Pará state showed a similar behavior to that already shown by Neves *et al.* (2017) for 2014. Mato Grosso is one of the main producers of large-scale crops in Brazil (IBGE 2006). These areas are visible as larger and more homogeneous polygons with geometrical shapes, which are easily identifiable on Landsat images. For this reason, Mato Grosso was the only state that achieved agreements close to 60% and 70% for the Agriculture class.

Different interpretations of LULCC between the mapping systems can have significant implications for environmental policies both in disagreement and agreement scenarios. For example, an area of intense mining near an important highway (BR-163), in Pará state (Figure 7a), was classified as Mining by TerraClass, but mainly as Pasture or NFNV by the MapBiomas automated methodology. This kind of misclassification could generate environmental damage if the data were used in public policies to combat illegal mining in the Amazon region. In



**Figure 6.** Land use classification of an area in northeastern Pará state (Brazil) in TerraClass (A), MapBiomas 2 (B), and MapBiomas 3 (C), highlighting some existing disagreements. This figure is in color in the electronic version.



**Figure 7.** Two examples of disagreement between TerraClass and MapBiomass classifications visualized in a Landsat image in western Pará state (Brazil): A – Mining area near the BR-163 highway - path/row 228/65, August 2, 2014; B – Secondary vegetation - path/row 227/62, October 30, 2014. This figure is in color in the electronic version.

another example (Figure 7b), there is predominant agreement between Forest classifications, however, the MapBiomass Forest classification is more inclusive than the TerraClass Forest classification. Almost all areas of regeneration were included in the Forest class by MapBiomass, but were classified as Secondary vegetation by TerraClass. The inclusion of regeneration areas into Forest by MapBiomass makes it more difficult to discern primary from secondary regrowth forest, and thus to estimate the quantity of carbon that the Amazon forest has already lost or still has in stock. This estimation is important for the development of REDD+ initiatives, a global instrument to encourage developing countries to take action to reduce the emissions from deforestation and forest degradation (Gallo and Albrecht 2019). Within this framework, the proper monitoring of secondary vegetation is important for carbon stock assessment in the Amazon forest.

Among other important initiatives that subsidize environmental policies in the Brazilian Amazon, there is the Soy Moratorium (SoyM), an agreement by soybean traders not to buy soy cultivated on deforested lands after July 2006 (Gibbs *et al.* 2015), and the Rural Environmental Registry (*CAR*, in Portuguese), which requires every Brazilian rural private property to provide georeferenced information on its extent, boundaries and land use to a governmental database. The SoyM is an example of the direct relationship of the LULCC

dynamics with the commodities market. Interventions in the supply chains of soy and other commodities, such as cattle and timber, can be directly linked to the reduction in deforestation (Gibbs *et al.* 2015). To achieve this goal, SoyM, *CAR* and other schemes to monitor commodities require accurate and detailed mapping. For these purposes, the TerraClass semi-automated methodology, which checks each polygon visually, likely still produces the more accurate maps.

The complete automation of mapping, as performed in MapBiomass, is a positive feature that allows the cost- and time-effective coverage of all Brazilian biomes, as the system can run entirely on the Google Earth Engine free of charge, requiring less human resources than TerraClass. A possible downturn of the MapBiomass methodology is the dependency on a non-Brazilian platform, which can potentially lead to sovereignty issues to Brazil regarding the production of its own land-use and land-cover monitoring data.

## CONCLUSIONS

The use of TerraClass or MapBiomass can result in different interpretations regarding land-use and land-cover mapping. Our study provides an analytical background to support users of both databases to decide which mapping strategy is better suited for their applications. The TerraClass

methodology has several visual stages and produces data every two years, while MapBiomass uses a fully automated process and still produces some data inconsistencies, such as noisy pixels in already-consolidated areas, as expected in an automated per-pixel classification. Despite the high overall agreement, the methodological differences between projects resulted in significant disagreements. The complementary use of TerraClass and MapBiomass maps without a proper adaptation of legends is not recommended for LULCC analysis. The LCCS provides some criteria for reconciling the project legends, but introduces uncertainties in the data, as some classes are not represented in the same manner in both mapping systems. MapBiomass has a higher temporal resolution (yearly) and its legend allows some subdivisions of the Forest class. TerraClass is precise in the delimitation of minor classes in terms of area, such as Urban and Mining areas. Additionally, the use of a deforestation mask in TerraClass allows the separate mapping of primary Forest and regeneration or Secondary vegetation areas.

## ACKNOWLEDGMENTS

The first author thanks Conselho Nacional de Desenvolvimento Científico e Tecnológico (CNPQ) (grant N° 140372/2017-2) for the financial support for this study. Additionally, this study was financed in part by Coordenação de Aperfeiçoamento de Pessoal de Nível Superior (CAPES), Brazil - Finance Code 001.

## REFERENCES

- Almeida, C.A.; Coutinho, A.C.; Esquerdo, J.C.D.M.; Adami, M.; Venturieri, A.; Diniz, C.G.; Dessay, N.; Durieux, L.; Gomes, A.R. 2016. High spatial resolution land use and land cover mapping of the Brazilian Legal Amazon in 2008 using Landsat-5/TM and MODIS data. *Acta Amazonica*, 46: 291–302.
- Arvor, D.; Dubreuil, V.; Simões, M.; Bégué, A. 2013. Mapping and spatial analysis of the soybean agricultural frontier in Mato Grosso, Brazil, using remote sensing data. *GeoJournal*, 78: 833–850.
- Bontemps, S.; Herold, M.; Kooistra, L.; Van Groenestijn, A.; Hartley, A.; Arino, O.; Moreau, I.; Defourny, P. 2012. Revisiting land cover observations to address the needs of the climate modeling community. *Biogeosciences*, 9: 2145–2157.
- Brito, B. 2017. Potential trajectories of the upcoming forest trading mechanism in Pará State, Brazilian Amazon, *PLoS ONE*, 12: e0174154.
- Buurman, M.; Câmara, G.; de Carvalho, A.Y.; Jones, J.; Cartaxo, R.; Mosnier, A. *et al.* 2015. Description of the GLOBIOM-BRAZIL database available in the REDD-PAC WFS server. ([http://pure.iiasa.ac.at/id/eprint/13742/1/wfs\\_globiom\\_brazil\\_1April2015.pdf](http://pure.iiasa.ac.at/id/eprint/13742/1/wfs_globiom_brazil_1April2015.pdf)). Accessed on 20/07/2018.
- Coutinho, A.C.; Almeida, C.; Venturieri, A.; Esquerdo, J.C.D.M.; Silva, M. 2013. *Projeto TerraClass: Uso e cobertura da terra nas áreas desflorestadas na Amazônia Legal*. 1st ed. Embrapa and INPE, Brasília, 108p.
- Crouzeilles, R.; Feltran-Barbieri, R.; Ferreira, M.S.; Strassburg, B.B. 2017. Hard times for the Brazilian environment. *Nature Ecology & Evolution*, 1: 1213.
- Dalla-Nora, E.L.; de Aguiar, A.P.D.; Lapola, D.M.; Woltjer, G. 2014. Why have land use change models for the Amazon failed to capture the amount of deforestation over the last decade? *Land Use Policy*, 39: 403–411.
- De Faria, R.T.; Freitas, C.C.; Moreira, M.A.; Rudorff, B.F.T.; Adami, M. 2005. Direct expansion in the estimate of agricultural cultures by regular segments. *Revista Brasileira de Cartografia*, 57: 22–27.
- Efthimiou, N.; Psomiadis, E. 2018. The significance of land cover delineation on soil erosion assessment. *Environmental Management*, 62: 383–402.
- Esquerdo, J.; Zullo Júnior, J.; Antunes, J. 2011. Use of NDVI/AVHRR time-series profiles for soybean crop monitoring in Brazil. *International Journal of Remote Sensing*, 32: 3711–3727.
- FAO. 2016. UN Food and Agriculture Organization. Land Cover Classification System: Classification Concepts. Software version 3. (<http://www.fao.org/3/a-i5232e.pdf>). Accessed on 03 Nov 2019.
- Gallo, P.; Albrecht, E. 2019. Brazil and the Paris Agreement: REDD+ as an instrument of Brazil's Nationally Determined Contribution compliance. *International Environmental Agreements: Politics, Law and Economics*, 19: 123–144.
- Gibbs, H.K.; Rausch, L.; Munger, J.; Schelly, I.; Morton, D.C.; Noojipady, P.; Soares-Filho, B.; Barreto, P.; Micol, L.; Walker, N.F. 2015. Brazil's soy moratorium. *Science*, 347: 377–378.
- Herold, M.; Mayaux, P.; Woodcock, C.; Baccini, A.; Schmullius, C. 2008. Some challenges in global land cover mapping: An assessment of agreement and accuracy in existing 1 km datasets. *Remote Sensing of Environment*, 112: 2538–2556.
- IBGE. 2006. Instituto Brasileiro de Geografia e Estatística. Censo agropecuário 2006 (<https://sidra.ibge.gov.br/pesquisa/censo-agropecuaria/censo-agropecuaria-2006/segunda-apuracao>). Accessed on 20 Jul 2018.
- Ihaka, R.; Gentleman, R. 1996. A language for data analysis and graphics. *Journal of Computational and Graphical Statistics*, 5: 299–314.
- IMAZON. 2017. Instituto do Homem e Meio Ambiente da Amazônia. MAPBIOMAS – Amazon Biome: Algorithm Theoretical Basis Document & Results. ([https://mapbiomas.org/en/atbd?cama\\_set\\_language=en](https://mapbiomas.org/en/atbd?cama_set_language=en)). Accessed on 03 Mar 2018.
- INPE. 2014. Instituto Nacional de Pesquisas Espaciais. Projeto TerraClass 2012 – Mapeamento do uso e cobertura da terra na Amazônia Legal. (<http://www.inpe.br/cra/projetospesquisas/TerraClass201226nov2014.pdf>). Accessed on 10 Jan 2018.
- INPE. 2016. Instituto Nacional de Pesquisas Espaciais. Projeto de Monitoramento do Desflorestamento na Amazônia Legal – PRODES. (<http://www.obt.inpe.br/prodes/index.php>). Accessed on 10 Jan 2018.
- INPE. 2019. Instituto Nacional de Pesquisas Espaciais. OBT – Earth Observation General Coordination. Monitoring program of the Amazon and other biomes. (<http://terrabrasilis.dpi.inpe.br/downloads/>). Accessed on 15 Dec 2019.

- Kangas, A.; Korhonen, K.; Packalen, T.; Vauhkonen, J. 2018. Sources and types of uncertainties in the information on forest-related ecosystem services. *Forest Ecology and Management*, 427: 7–16.
- MapBiomass. 2017. Collection of Brazilian Land Cover & Use Map Series (<http://mapbiomas.org/>). Accessed on 25 Jul 2017.
- Mertens, B.; Pocard-Chapuis, R.; Piketty, M.G.; Lacques, A.E.; Venturieri, A. 2002. Crossing spatial analyses and livestock economics to understand deforestation processes in the Brazilian Amazon: the case of São Félix do Xingu in South Pará. *Agricultural Economics*, 27: 269–294.
- Müller-Hansen, F.; Cardoso, M.F.; Dalla-Nora, E.L.; Donges, J.F.; Heitzig, J.; Kurths, J.; Thonicke, K. 2017. A matrix clustering method to explore patterns of land-cover transitions in satellite-derived maps of the Brazilian Amazon. *Nonlinear Processes in Geophysics*, 24: 113–123.
- Neves, A.K.; Körting, T.S.; Fonseca, L.M.G.; de Queiroz, G.R.; Vinhas, L.; Ferreira, K.R.; Escada, M.I.S. 2017. TerraClass x MapBiomass: Comparative assessment of legend and mapping agreement analysis. *Proceedings of the XVIII GEOINFO*, Salvador, Brazil. p.295–300.
- Phillips, O.L.; Aragão, L.E.; Lewis, S.L.; Fisher, J.B.; Lloyd, J.; López-González, G. *et al.* 2009. Drought sensitivity of the Amazon rainforest. *Science*, 323: 1344–1347.
- Rizzi, R.; Risso, J.; Epiphanyo, R.D.V.; Rudorff, B.F.T.; Formaggio, A.R.; Shimabukuro, Y.E.; Fernandes, S.L. 2009. Estimativa da área de soja no Mato Grosso por meio de imagens MODIS. *Proceedings of the XIV Simpósio Brasileiro de Sensoriamento Remoto*, Natal, Brazil, p.387–394.
- Rudorff, B.F.T.; Adami, M.; Aguiar, D.A.; Moreira, M.A.; Mello, M.P.; Fabiani, L.; Amaral, D.F.; Pires, B.M. 2011. The soy moratorium in the Amazon biome monitored by remote sensing images. *Remote Sensing*, 3: 185–202.
- Rufin, P.; Müller, H.; Pflugmacher, D.; Hostert, P. 2015. Land use intensity trajectories on Amazonian pastures derived from Landsat time series. *International Journal of Applied Earth Observation and Geoinformation*, 41: 1–10.
- Shimabukuro, Y.E.; Batista, G.; Mello, E.; Moreira, J.; Duarte, V. 1998. Using shade fraction image segmentation to evaluate deforestation in Landsat thematic mapper images of the Amazon region. *International Journal of Remote Sensing*, 19: 535–541.
- Souza Jr, C.M.; Roberts, D.A.; Cochrane, M.A. 2005. Combining spectral and spatial information to map canopy damage from selective logging and forest fires. *Remote Sensing of Environment*, 98: 329–343.
- Tchuenté, A.T.K.; Roujean, J.L.; De Jong, S.M. 2011. Comparison and relative quality assessment of the GLC2000, GLOBCOVER, MODIS and ECOCLIMAP land cover data sets at the African continental scale. *International Journal of Applied Earth Observation and Geoinformation*, 13: 207–219.
- Tyukavina, A.; Hansen, M.C.; Potapov, P.V.; Stehman, S.V.; Smith-Rodriguez, K.; Okpa, C.; Aguilar, R. 2017. Types and rates of forest disturbance in Brazilian Legal Amazon, 2000–2013. *Science Advances*, 3: e1601047.
- Verburg, P.H.; Neumann, K.; Nol, L. 2011. Challenges in using land use and land cover data for global change studies. *Global Change Biology*, 17: 974–989.

**RECEIVED:** 14/03/2019

**ACCEPTED:** 10/01/2020

**ASSOCIATE EDITOR:** Henrique de Melo J. Barbosa



This is an Open Access article distributed under the terms of the Creative Commons Attribution License, which permits unrestricted use, distribution, and reproduction in any medium, provided the original work is properly cited.