

Nutritional Interventions in Metabolic Syndrome A Systematic Review

Leila Sicupira Carneiro de Souza Leão, Milena Miranda de Moraes, Giulia Xavier de Carvalho, Rosalina Jorge Koifman

Universidade Federal do Estado do Rio de Janeiro, FIOCRUZ / Escola Nacional de Saúde Pública, Rio de Janeiro, RJ – Brasil

Abstract

There is no consensus on the most appropriate nutritional strategy for treating metabolic syndrome (MS), such that cardiovascular risk is reduced. This study was designed to assess the strength of evidence of the benefits of various nutritional interventions in MS remission. Performed in Medline, Cochrane Library and PubMed databases, the virtual search consisted of randomized clinical trials published between 1999 and 2009 in any language, studies involving individuals aged 18 or older and diagnosed with MS, regardless of the criterion. The Boolean operator *and* was used in the combination of the MeSH terms “Metabolic Syndrome”, “Metabolic x Syndrome” and “Metabolic Syndrome X”, the entry terms “Dysmetabolic Syndrome X”, “Metabolic Cardiovascular Syndrome,” “Metabolic X Syndrome” and “Syndrome X, Metabolic”, plus the terms “diet”, “intervention and diet”, “treatment and diet” and “supplementation”. For each study included in the review, we estimated the prevalence of MS and the calculation of effectiveness after the follow-up period. Relative risk measures for each study were described by Forest Plot. We identified 131 articles, which, after eligibility criteria, resulted in 15 studies. These studies were divided into four groups: normocaloric diet associated with exercise; isolated normocaloric diet, low-calorie diet combined with exercises; and isolated low-calorie diet. Tests with low-calorie diet associated with exercising revealed higher efficiency values, helping to emphasize the global aspects of lifestyle change in the treatment of MS, in which healthy and low-calorie diet should be complemented with the practice of physical activity.

Keywords

Metabolic syndrome; clinical trials; exercise; diet fat-restricted; evidence - based medicine.

Mailing address: Leila Sicupira Carneiro de Souza Leão •

Rua Nicanor Nunes, 102, quadra 17, lote 26, – Piratininga – 24350-460 – Niterói, RJ – Brazil

E-mail: leilaleao@gmail.com, rosalina.koifman@hotmail.com

Manuscript received April 05, 2010; revised manuscript received July 29, 2010; accepted on August 16, 2010.

Introduction

Metabolic syndrome (MS) is a set of at least three abnormalities, either in blood pressure or metabolism of carbohydrates and lipids, usually associated with cardiovascular disease, the leading cause of morbidity and mortality in Brazil¹.

There is no consensus on the most appropriate nutritional strategy to treat MS. Although current proposals related to behavioral alterations such as changed eating habits and physical activity², nutritional recommendations were established from studies with healthy patients or those with isolated metabolic alterations³⁻⁸. Thus, since the treatment is effective only for one component of the syndrome, instead of diagnosis remission, represented by the normalization of at least three characteristics, cardiovascular protection would therefore be smaller.

In this context, the Guidelines Project of the Brazilian Society of Endocrinology⁴ underscores the need for conducting research that contributes to define the type of intervention that is more effective in the treatment of individuals diagnosed with MS.

Due to lack of systematic review on this topics, this study was designed to assess the strength of evidence of the benefits of various nutritional interventions in MS remission.

Methods

We performed a systematic review of studies with nutritional interventions in individuals with MS diagnosed by the presence of at least three alterations as recommended by the World Health Organization (WHO) in 1999⁹. In addition to this official publication, other diagnostic criteria suggested by the National Cholesterol Education Program - Adult Treatment Panel III (NCEP-ATP III)¹⁰, American Heart Association (AHA)¹¹, International Diabetes Federation (IDF)¹² and European Group for the Study of Insulin Resistance (EGIR)¹³ were also considered, as they represented adaptations or modifications of the official criterion.

The virtual search was performed on Medline, Cochrane Library and PubMed databases, to seek clinical trials published between 1999 and 2009 in any language. The evaluation of eligibility criteria was developed independently by two reviewers; in case of disagreements, advice was asked to a third researcher.

The Boolean operator *and* was used in the combination of the MeSH terms “Metabolic Syndrome”, “Metabolic x Syndrome” and “Metabolic Syndrome X”; the entry terms “Dysmetabolic Syndrome X”, “Metabolic Cardiovascular Syndrome,” “Metabolic

X Syndrome” and “Syndrome X, Metabolic”, plus the terms “diet”, “intervention and diet”, “treatment and diet” and “supplementation”. The type of publication was a randomized clinical trial for all combinations of words.

Abstracts of selected articles were analyzed to determine whether they met the inclusion criteria which included: presenting a randomized controlled clinical trial proposal for nutritional intervention in population older than 18 years of age, and consider the MS remission as the outcome. We excluded studies of interventions designed to treat only isolated MS alterations.

Wherever possible, we employed PRISMA¹⁴ to report this systematic review. After reading the full articles, the results were summarized according to the MS diagnosis criterion, nutritional intervention, the control group, the intervention period and the prevalence of MS, the main outcome of this review.

To make comparison between studies easier, we calculated the effectiveness of interventions through the prevalence values of MS after the follow-up period, applied in the formula proposed by Szklo¹⁵: $\{ [(\text{prevalence in the control group} - \text{prevalence in the intervention group}) / \text{prevalence in the control group}] \times 100 \}$.

Relative risk measures for each study were described by Forest Plot, prepared in the statistical software Review Manager, version 5. However, statistical meta-analysis was not justified due to marked heterogeneity of studies included.

Results

In the electronic search, 131 publications were obtained, of which, after reading the summaries and excluding some which involved drugs, 59 articles were selected for analysis. After exclusion of 44 articles that did not meet the inclusion criteria, 15 studies were included in the review (Figure 1).

All selected studies were randomized controlled trials and were published in English. As for the location, Italy¹⁶⁻¹⁸ contributed with three studies; the United States¹⁹⁻²³ with five; Finland^{24,25} with two; and Japan²⁶, Germany²⁷, Iran²⁸, Spain²⁹ and Norway³⁰, with one each.

The interventions had periods between six weeks and 31 months and involved 2,089 participants aged between 24 and 75 years with body mass index (BMI) between 26 and 43kg/m². Out of the 15 studies, only three mentioned run in period^{16,25,28}, and two with partially blind intervention^{17,20}.

As to the population, four trials studied outpatients from only one hospital^{18,22}; two were multicentric^{24,29}; two studied population representative of communities^{16,30}; three studied patients picked up by newspaper advertisements^{19,25,26}; one studied university employees²⁰; and three did not inform the population studied^{21,23,27}.

The prevalence of MS was the main outcome in six studies^{16,24-26,29,30} and secondary when the prevalence of MS components^{18-22,27,28}, weight reduction²³ and behavior of inflammatory markers and endothelial function¹⁷ function were the primary outcomes.

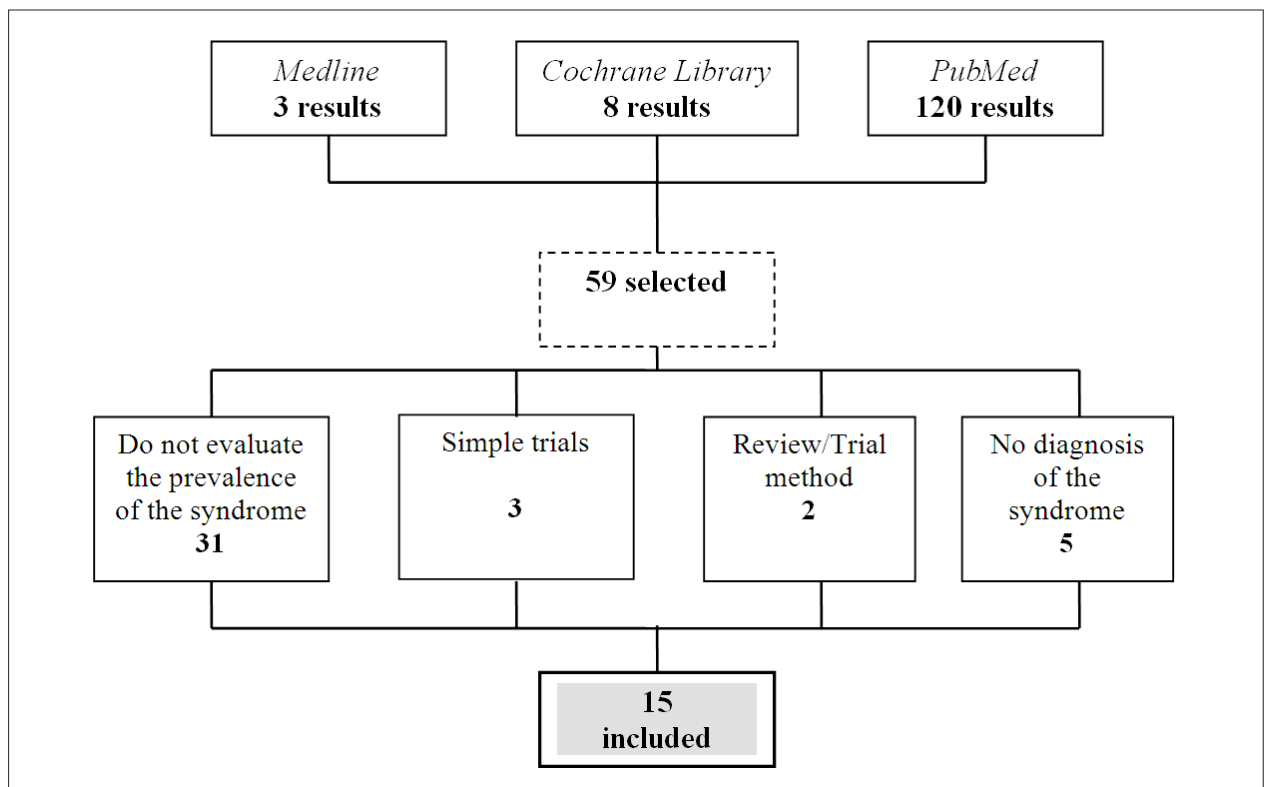


Figure 1 - Electronic search and inclusion of articles of the study.

Review Article

The tests were grouped according to type of intervention, namely: normocaloric diet combined with exercise^{16,19}; normocaloric diet^{20,29}, low-calorie diet combined with exercise^{24,25}, and low-calorie diet^{22,27} (Table 1).

Normocaloric diet combined with exercise

In the study by Stewart et al¹⁶ the intervention group was asked to perform supervised aerobic exercise three times a week, besides the individual diet. Controls received only general guidelines on healthy diet. Similarly, Bo et al¹⁷

instructed its control group with general information, while the intervention group received individualized nutritional counseling and exercise recommendations.

Normocaloric Diet

In the study by Mutungi et al²⁰ the intervention was characterized by a diet without caloric restriction, low-carbohydrate, plus three liquid eggs (Vista®) per day. The control group consumed only a maintenance diet. It is noteworthy that although the diet proposal was normocaloric,

Table 1 - Summary of studies included in the systematic review with their calculations of effectiveness

Author Year	Criteria for diagnosingMS	Intervention Group*	Control Group*	Duration (months)	Effectiveness of the study %
Stewart et al ¹⁹ , 2005.	NCEP/ATPIII 2001	Normocaloric diet + exercises (n=22)	General Guidelines (n=22)	6	27.8%
Bo et al ¹⁶ , 2007.	NCEP/ATPIII 2001	Normocaloric diet + exercises (n=119)	General Guidelines (n=120)	12	46.9%
Mutungi et al ²⁰ , 2008	NCEP/ATPIII 2001	Normocaloric diet + 3 eggs (n=11)	Normocaloric diet (n=7)	3	100%
Salas-Salvadó et al ²⁹ , 2008.	NCEP/ATPIII 2001	Normocaloric diet + olive oil (n=250)	Normocaloric diet (n=250)	12	5.3%
		Normocaloric diet + nuts (n=250)			13.8%
Kukkonen-Harjula et al ²⁵ , 2005.	NCEP/ATPIII 2001 modified	Low-calorie diet + exercises (n=10)	Low-calorie diet (n=13)	31	25.7%
Villareal et al ²¹ , 2006,	NCEP/ATPIII 2001	Low-calorie diet + exercises (n=9)	General Guidelines (n=15)	6.5	66.7%
Okura et al ²⁶ , 2007,	COMITÉ JAPONÊS 2005	Low-calorie diet + exercises (n=38)	Low-calorie diet (n=21)	3.5	81.5%
Anderssen et al ³⁰ , 2007,	IDF, 2006	Low-calorie diet + exercises (n=43)	Low-calorie diet (n=34)	12	49.6%
Ilanne-Parikka et al ²⁴ , 2008.	AHA, 2005	Low-calorie diet + exercises (n=196)	General Guidelines (n=06)	12	14.3%
Seshadri et al ²² , 2004,	NCEP/ATPIII 2001	Low-calorie high carbohydrates (n=19)	Low-calorie diet (n=17)	6	16.4%
Esposito ET al ¹⁷ , 2004,	NCEP/ATPIII 2001	Mediterranean low-calorie diet (n=90)	General Guidelines (n=90)	24	48.8%
Azadbakht et al ²⁸ , 2005,	NCEP/ATPIII 2001	Low-calorie diet DASH (n=38)	Low-calorie diet (n=38)	6	19.8%
Muzio et al ¹⁸ , 2007,	NCEP/ATPIII 2001	Low-calorie high carbohydrates (n=50)	Low-calorie high carbohydrates (n=50)	5	23.3%
Katcher et al ²³ , 2008,	NCEP/ATPIII 2001	Low-calorie diet with whole grains (n=24)	Low-calorie diet (n=23)	3	0%
König et al ²⁷ , 2008.	NCEP/ATPIII 2001	Low-calorie + soy-based meal replacement (n=22)	Low-calorie diet (n=8)	1.5	11.9%

NCEP/ATPIII - National Cholesterol Education Program Adult Treatment Panel; IDF - International Diabetes Federation; AHA - American Heart Association; DASH - Dietary Approaches to Stop Hypertension; * Individuals diagnosed with metabolic syndrome.

both groups reduced the energy content of the diet by the end of follow-up period.

In the trial by Salas-Salvadó et al²⁹ the two intervention groups consumed a Mediterranean diet supplemented with extra virgin olive oil (1.25L per week) or nuts (15g of walnuts per day; 7.5g of hazelnuts per day; 7.5g of almonds per day). The control group was guided only with normocaloric diet.

Low-calorie diet combined with exercise

In the study by Kukkonen Harjula et al²⁰ participants underwent two phases: one which consisted of weight reduction and another which consisted of weight maintenance with the intervention of interest, diet plus walking, and one control group only with diet. In the study by Villareal et al²¹ the intervention consisted of low-calorie diet combined with exercise, while the control group consumed only low-calorie diet. Okura et al²⁶ provided the control group a low-calorie diet with a food supplement (MicroDiet®). The intervention group consumed the same diet associated with exercise.

In the study by Anderssen et al³⁰ the group which combined exercise and diet was supervised to perform aerobic activity three times a week and calorie intake with energy restriction. The control group consumed only individualized low-calorie diet.

In the study by Ilanne-Parikka et al²⁴ the intervention consisted of guidelines to increase the level of physical activity, addition of 15g of fiber for each 1,000kcal and adoption of a diet low in fat and cholesterol. The control group received only general guidelines.

Low-calorie diet

The study by Seshadri et al²² offered balanced low-calorie diet to the control group, while the intervention group was instructed to consume low-calorie diet low in carbohydrates. Esposito et al¹⁷ oriented the intervention group with a Mediterranean diet, while the control group followed general guidelines on healthy eating.

In the Azadbakht study²⁸ the intervention consisted of the DASH diet (Dietary Approaches to Stop Hypertension), with a deficit of 500 kcal/day, higher intake of fruits, vegetables, nonfat dairy foods and lower sodium content.

Muzio et al¹⁸ conducted intervention with 48% carbohydrates and 65% control, both with a deficit of 500 kcal/day and monthly group sessions for nutritional guidance, while Katcher et al²³ compared a low-calorie diet group based on whole grains with another that consumed refined grains.

The study by König et al²⁷ instructed the control group to consume low-calorie diet and the intervention group to replace two meals a day for a soy yogurt with honey (Almased®).

Considering all studies included in the review, as well as the different groups according to type of intervention and corresponding calculation of effectiveness, it was observed that the low-calorie diet combined with physical exercises performed better compared to other groups, followed by normocaloric diet with exercise, isolated low-calorie diet and isolated normocaloric diet.

However, regardless of the type of nutritional intervention, measures of effect expressed in the Forest Plot describe the protective effect on the risk of developing MS for all proposals for nutritional treatment analyzed (Figure 2).

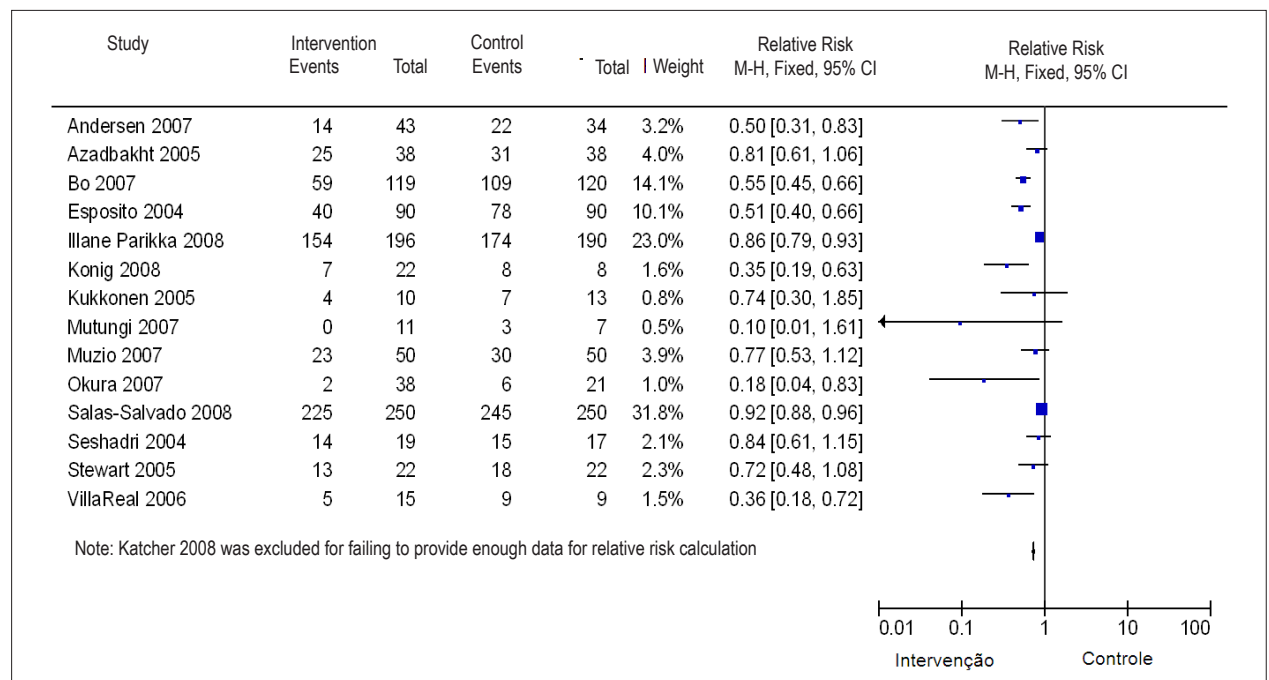


Figure 2 - Forest plot of studies included in the systematic review and relevant measures of association.

Discussion

As far as it is known, this is the only systematic review to evaluate the evidentiary strength of nutritional interventions in MS diagnosis remission. After an extensive search strategy, inclusion of only 15 studies stated the shortage of literature when it comes to assessing the diagnosis of MS as primary or secondary category-based outcome.

Besides the quantitative limitation, the low quality and heterogeneity of the studies were also noted. None of the authors conducted the trial according to the CONSORT guide (<http://www.consort-statement.org/>); there was high variability in the time of intervention. Some studies stipulated control groups based solely on general guidelines, while others, on calculated diet; and most of them compared groups with small samples (<30 participants).

These characteristics, associated with poor detailing of the methodology in most articles, prevented clarification on the sample size calculation, as well as specific information about the development of the intervention proposed, such as blinding and run in period, preventing a meta-analysis of the results presented.

However, the effectiveness of low-calorie proposals combined with physical activity was similar to the interventions performed in individuals with isolated alterations³¹⁻³⁴ and reinforce the suggestion by Reaven³⁵, who proposed a low-calorie diet combined with physical activity for the treatment of patients with MS.

We may consider that reducing diet calorie is the main strategy for the treatment of overweight³⁶, because reduced calorie intake promote reduced fat mass by means of negative energy balance, a condition in which energy expenditure exceeds energy intake. When calorie reduction is added to the practice of physical activities, the effect of weight reduction is enhanced, especially in individuals with MS, where the maintenance of lean body mass would increase sensitivity to insulin³⁷.

The importance of physical activity added to a diet plan, though normocaloric, was demonstrated in the studies by Stewart et al¹⁶ and Bo et al¹⁷. Even with effectiveness inferior results comparing to interventions with low-calorie diet and exercise, similar characteristics of age and BMI in both groups and maintenance of energy consumption after the intervention reinforce the influence of physical activity on weight reduction. At the same time, reduced effectiveness of normocaloric diet not associated with physical activity of Salas-Salvadó et al¹⁹ confirmed the need for a negative energy balance in the

treatment of MS, either by reducing calories or by increasing energy expenditure.

In this sense, we can understand the suggestions by Project Guidelines⁴, who values the need to reduce the energy content of proposed treatments for MS, rather than changes in macronutrient composition. We therefore recommend that high-quality randomized controlled trials be conducted to safely detect the effects of dietary exposures and provide more objective approaches in measuring dietary intake and the outcomes of relevance to public health.

This systematic review had limitations such as a potential failure to identify all publications despite the attempt to minimize this possibility by applying broad terms, repeating the search in databases and references of selected articles. As strengths, we highlight the systematic approach, the extensive search in relevant databases, inclusion of publications in any language and methodological rigor.

Although the set of interventions with low-calorie diet combined with physical activity has shown results that stood out among other types of nutritional proposals, the joint analysis of the studies provided evidence of the benefits of individualized diets low in saturated fats, rich in fiber, monounsaturated oils, vitamins and minerals in metabolic syndrome remission.

Conclusion

Even taking into account factors that limited this systematic review, it can be concluded that scientific literature supports the beneficial effects of low-calorie diet associated with physical exercise, reinforcing the importance of changing lifestyle in the management of MS.

Potential Conflict of Interest

No potential conflict of interest relevant to this article was reported.

Sources of Funding

This study was partially funded by UNIRIO and FIOCRUZ.

Study Association

This article is part of the thesis of master submitted by Leila Sicupira Carneiro de Souza Leão, from Escola Nacional de Saúde Pública - FIOCRUZ.

References

1. Ministério da Saúde. Secretaria de Vigilância em Saúde. Uma análise da situação de saúde. Perfil de Mortalidade do Brasileiro. Brasília, 6 de novembro de 2008. [Citado em 2008 nov 8]. Disponível em: <http://www.saude.gov.br>.
2. Deen D. Metabolic syndrome: time for action. *Am Fam Physician*. 2004; 69 (12): 2875-82.
3. Carvalho MHC, Brandão AP, Brandão AA, Nogueira AR, Suplicy H, Guimarães JI, et al. / Sociedade Brasileira de Hipertensão / Sociedade Brasileira de Cardiologia / Sociedade Brasileira de Endocrinologia e Metabologia / Sociedade Brasileira de Diabetes. I Diretriz brasileira de diagnóstico e tratamento da síndrome metabólica. *Arq Bras Cardiol*. 2005; 84 (supl 1): 3-28.

4. Sociedade Brasileira de Endocrinologia e Metabologia. Projeto diretrizes: Síndrome Metabólica: tratamento não-farmacológico para redução do risco cardiovascular. 2006. [citado em 2008 ago 19]. Disponível em: http://www.projetodiretrizes.org.br/5_volume/38-SindrMeta.pdf.
5. Hooper L, Bartlett C, Davey SG, Ebrahim S. Advice to reduce dietary salt for prevention of cardiovascular disease. *Cochrane Database Syst Rev*. 2004; (1): CD003656.
6. Hooper L, Summerbell CD, Higgins JP, Thompson RL, Clements G, Capps N, et al. Reduced or modified dietary fat for preventing cardiovascular disease. *Cochrane Database Syst Rev*. 2001; (3): CD002137.
7. Vollmer WM, Sacks FM, Ard J, Appel LJ, Bray GA, Simon-Morton DG, et al. Effects of diet and sodium intake on blood pressure: subgroup analysis of the DASH-sodium trial. *Ann Intern Med*. 2001; 135 (12): 1019-28.
8. Trichopoulos A, Costacou T, Bamia C, Trichopoulos D. Adherence to a Mediterranean diet and survival in a Greek population. *N Engl J Med*. 2003; 348 (26): 2599-608.
9. World Health Organization. Definition, diagnosis and classification of diabetes mellitus and its complications: report of a WHO consultation. Washington; 1999.
10. Executive Summary of the Third Report of the National Cholesterol Education Program (NECP). Expert Panel on Detection Evaluation, and Treatment of High Blood Cholesterol in Adults (Adult Treatment Panel III). *JAMA*. 2001; 285 (19): 2486-97.
11. Grundy SM, Brewer HB, Cleeman JI, Smith SC, Lenfant C. Definition of metabolic syndrome: report of the National Heart, Lung, and Blood Institute/American Heart Association conference on scientific issues related to definition. *Arterioscler Thromb Vasc Biol*. 2004; 24 (2): e13-8.
12. International Diabetes Federation. [homepage na Internet]. The IDF consensus worldwide definition of the Metabolic Syndrome. [citado 2008 out 10]. Disponível em <http://www.idf.org>.
13. Balkau B, Charles MA. Comment on the provisional report from the WHO Consultation. *European Group of the Study of Insulin Resistance (EGIR). Diabet Med*. 1999; 16 (5): 442-3.
14. Moher D, Liberati A, Tetzlaff J, Altman DG. Preferred reporting items for systematic reviews and meta-analyses: the PRISMA statement. *J Clin Epidemiol*. 2009; 62 (10): 1006-12.
15. Szklo M, Javier Nieto, F. *Epidemiology beyond the basics*. Maryland: Aspen Publication; 2000.
16. Bo S, Ciccone G, Baldi C, Benini L, Dusio F, Forastiere G, et al. Effectiveness of a lifestyle intervention on metabolic syndrome: a randomized controlled trial. *J Gen Intern Med*. 2007; 22 (12): 1695-703.
17. Esposito K, Marfella R, Ciotola M, Di Palo C, Giugliano F, Giugliano G, et al. Effect of a Mediterranean-Style diet on endothelial dysfunction and markers of vascular inflammation in the metabolic syndrome. *JAMA*. 2004; 292 (12): 1440-6.
18. Muzio F, Mondazzi L, Harris WS, Sommariva D, Branchi A. Effects of moderate variations in the macronutrient content of the diet on cardiovascular disease risk factors in obese patients with the metabolic syndrome. *Am J Clin Nutr*. 2007; 86 (4): 946-51.
19. Stewart KJ, Bacher AC, Turner K, Lim JG, Hees PS, Shapiro EP, et al. Exercise and risk factors associated with metabolic syndrome in older adults. *Am J Prev Med*. 2005; 28 (1): 9-18.
20. Mutungi G, Ratliff, Puglisi M, Torres-Gonzalez M, Vaishnav U, Leite JO, et al. Dietary cholesterol from eggs increases plasma HDL cholesterol in overweight men consuming a carbohydrate-restricted diet. *J Nutr*. 2008; 138 (2): 272-6.
21. Villareal DT, Miller BV, Banks M, Fontana L, Sinacore DR, Klein S. Effect of lifestyle intervention on metabolic coronary heart disease risk factors in obese older adults. *Am J Clin Nutr*. 2006; 84 (6): 1317-23.
22. Seshadri P, Iqbal N, Stern L, Williams M, Chicano KL, Daily DA, et al. A randomized study comparing the effects of a low-carbohydrate diet and a conventional diet on lipoprotein subfractions and C-reactive protein levels in patients with severe obesity. *Am J Med*. 2004; 117 (6): 398-405.
23. Katcher HI, Legro RS, Kunesman AR, Gillies PJ, Demers LM, Bagshaw DM, et al. The effects of a whole grain-enriched hypocaloric diet on cardiovascular disease risk factors in men and women with metabolic syndrome. *Am J Clin Nutr*. 2008; 87 (1): 79-90.
24. Ilanne-Parikka P, Eriksson JG, Lindström J, Peltonen M, Aunola S, Hämäläinen H, et al. Effect of lifestyle intervention on the occurrence of metabolic syndrome and its components in the Finnish Diabetes Prevention Study. *Diabetes Care*. 2008; 31 (4): 805-7.
25. Kukkonen-Harjula KT, Borg PT, Nenonen AM, Fogelholm MG. Effects of a weight maintenance program with or without exercise on the metabolic syndrome: a randomized trial in obese men. *Prev Med*. 2005; 41 (3-4): 784-90.
26. Okura T, Nakata Y, Ohkawara K, Numao S, Katayama Y, Matsuo T, et al. Effects of aerobic exercise on metabolic syndrome improvement in response to weight reduction. *Obesity*. 2007; 15 (10): 2478-84.
27. König D, Deibert P, Frey I, Landmann U, Berg A. Effect of meal replacement on metabolic risk factors in overweight and obese subjects. *Ann Nutr Metab*. 2008; 52 (1): 74-8.
28. Azadbakht L, Mirmiran P, Esmailzadeh A, Azizi F, Azizi F. Beneficial effects of a dietary approaches to stop hypertension eating plan on features of the metabolic syndrome. *Diabetes Care*. 2008; 28 (12): 2823-31.
29. Salas-Salvadó J, Fernandez-Ballart J, Ros E, Martinez-Gonzalez MA, Fitó M, Estruch R, et al. Effect of a Mediterranean diet supplemented with nuts on metabolic syndrome status: one-year results of the PREDIMED Randomized Trial. *Arch Intern Med*. 2008; 168 (22): 2449-58.
30. Anderssen SA, Carroll S, Urdal P, Holme I. Combined diet and exercise intervention reverses the metabolic syndrome in middle-aged males: results from the Oslo Diet and Exercise Study. *Scand J Med Sci Sports*. 2007; 17 (6): 687-95.
31. Jacobs DR, Sluik D, Rockling-Andersen MH, Anderssen SA, Drevon CA. Association of 1-y changes in diet pattern with cardiovascular disease risk factors and adipokines: results from the 1-y randomized Oslo Diet and Exercise Study. *Am J Clin Nutr*. 2009; 89 (2): 509-17.
32. Kuller LH, Kinzel LS, Pettee KK, Kriska AM, Simkin-Silverman LR, Conroy MB, et al. Lifestyle intervention and coronary heart disease risk factor changes over 18 months in postmenopausal women: the women on the move through activity and nutrition (Woman Study) clinical trial. *J Womens Health*. 2006; 15 (8): 962-74.
33. Meckling KA, Sherfey R. A randomized trial of a hypocaloric high-protein diet, with and without exercise, on weight loss, fitness, and markers of the metabolic syndrome in overweight and obese women. *Appl Physiol Nutr Metab*. 2007; 32 (4): 743-52.
34. Oh EG, Hyun SS, Kim SH, Bang SY, Chu SH, Jeon JT, et al. A randomized controlled trial of therapeutic lifestyle modification in rural women with metabolic syndrome: a pilot study. *Metabolism*. 2008; 57 (2): 255-61.
35. Reaven G. Banting lecture 1988: role of insulin resistance in human disease. *Diabetes*. 1988; 37 (12): 1595-607.
36. Francischi RPP, Pereira LO, Freitas CS. Obesidade: atualização sobre etiologia, morbidade e tratamento. *Rev Nutr*. 2000; 13: 17-28.
37. Lyra R, Oliveira M, Lins D, Cavalcanti N. Prevenção do diabetes mellitus tipo 2. *Arq Bras Endocrinol Metab*. 2006; 50 (2): 239-49.