

Article - Environmental Sciences

Comparative Analysis of Wastewaters from Three Bulgarian Dairy Multiproduct Plants

Aleksandar Kolev Slavov^{1*}

<https://orcid.org/0000-0002-2372-0508>

Milena Ivanova Nikolova¹

<https://orcid.org/0000-0003-3968-289X>

Petar Todorov Panayotov²

<https://orcid.org/0000-0002-9298-1808>

Dimitar Stefanov Stoev¹

<https://orcid.org/0000-0002-5218-4273>

Donka Stoyanova Taneva¹

<https://orcid.org/0000-0001-6036-8702>

¹University of Food Technologies, Department of Ecological Engineering, Plovdiv, Bulgaria; ²University of Food Technologies, Department of Milk and Dairy Products, Plovdiv, Bulgaria.

Editor-in-Chief: Alexandre Rasi Aoki

Associate Editor: Marcos Pileggi

Received: 03-Oct-2023; Accepted: 29-Feb-2024

*Correspondence: alex_slavov@uft-plovdiv.bg; Tel.: +359-887132540 (A.K.S.).

HIGHLIGHTS

- Whey and wash waters from three dairy multiproduct plants are studied.
- Effluents are compared by TS, TSS, active reaction, FOG, BOD, COD, TN and TP values.
- Kashkaval whey from sheep's milk processing is the most contaminated fraction.
- Wash waters are cleanest dairy effluents but have largest volumetric load.

Abstract: The growing sector of dairy industry in Bulgaria leads to large waste stream formation with high pollution variation, which require specific treatment application. In the present research different fractions and wash waters from the production of kashkaval and white brined cheese, milk curd, strained yoghurt manufactured in three medium-type Bulgarian milk processing plants were studied. The basic indicators for wastewater quality: total solids (TS), total suspended solids (TSS), active reaction, fat, oil and grease (FOG), 5-day biological oxygen demand (BOD₅), chemical oxygen demand (COD), total nitrogen (TN) and total phosphorus (TP) were analysed by standard procedures. The obtained results indicate that kashkaval whey from the sheep's milk processing was the most contaminated effluent, reaching COD more than 68,000 mg O₂/dm³ and BOD₅ – up to 37,000 mg O₂/dm³. Such high concentrated wastewaters can be treated only by anaerobic methods. Secondary cheese whey (SCW) has less impurities than cheese whey, but its soluble milk fractions are difficult to biodegrade, resulting in BOD₅:COD ratio lower than 0.40. Application of membrane technologies in milk co-product processing remove totally FOG from the SCW, where BOD₅ and COD values are around 950 and 2.500 mg O₂/dm³, respectively. However, the TN concentration in it is not enough to apply directly aerobic utilization. This method is the most appropriate for washing waters, which occupy both the largest volume and the cleanest fractions of all milk effluents. Future combinations of different dairy wastewaters will show the best utilization protocol for each of the milk processing plant.

Keywords: industrial dairy wastewater composition; whey; second cheese whey; washing water.

INTRODUCTION

The dairy industry has deep traditions in Bulgaria [1]. In recent years, a positive trend in the consumption of dairy foods has been observed in the domestic market [2,3]. The production of white brined cheese, kashkaval and Bulgarian yogurt is the most represented, but the variety of products offered is increasing [4-9].

Moreover, this sector is one of the main consumers of drinking water in the food industry [10,11]. The large assortment and applied technologies lead to the production of waste streams of different quantity and quality [12,13]. A good knowledge of the composition and characteristics of waters creates a prerequisite for their correct treatment [14]. The most polluted are the waste streams from the production of white brined cheese, kashkaval, cottage cheese, condensed milk and others, which are often thrown away without further treatment [15]. No less significant are the washing waters obtained from the cleaning of the technological equipment [16]. The main pollutants in them are organic compounds such as lactose, water-soluble proteins, emulsified lipids, mineral substances and detergents, which are the cause of high values of BOD, COD, insoluble solids, nitrogen compounds [17-20]. The rapid decay of the large amount of organic matter can create problems when processing these wastewaters in urban treatment plants, and their direct discharge into surface water bodies is highly undesirable [21,22]. Therefore, it is necessary to look for opportunities for their purification before release into the environment. The presence of different components in the wastewater of the dairy industry requires the application of a multi-level treatment approach [23]. Despite studies in the field, published data on the composition of industrial wastewater from dairy plants are few [24-28], and for Bulgaria – the information is insufficient [29].

The purpose of the present study is to characterize the waste streams from the production of white brine cheese, kashkaval, milk curd, yoghurt and strained yoghurt from various plants in Bulgaria.

MATERIAL AND METHODS

Material

Whey and washing waters from three medium-type milk processing plants (production capacity less than 100 m³ raw milk/day) located in the region of Southern Bulgaria were studied. The first two enterprises manufacture 12 months of cow's milk and 5 months of the year sheep's milk into kashkaval, white brined cheese and whey curd obtained by filtering through cloth - for Plant 1 (P1) and through membrane processes - for Plant 2 (P2). The third factory (P3) specializes in the production of yoghurt, strained yoghurt and milk curd.

Data from the flow meters for the volume of the milk processed and waste effluents was kindly provided to us by the respective dairy plant operators.

Sampling was carried out in accordance with current legislation [30]. The number of annual measurements is 4 – for P1; 2 – for P2 and 4 – for P3. During the analyses, an average sample obtained from pre-homogenized, consecutively obtained 4 single samples taken at an interval of 2 h was used.

Methods

The determination of the individual parameters of the wastewaters was carried out according to the specified standards: total solids (TS) and total suspended solids (TSS) - BSS 17.1.4.04:1980 [31], active reaction - BSS 17.1.4.27:1980 [32], fat, oil and grease (FOG) – EPA 1664 [33], 5-day biological oxygen demand (BOD₅) – ISO 1899-2:2004 [34], chemical oxygen demand (COD) – ISO 6060:2020 [35]. The following chemical indicators were analyzed photometrically by tests from the Spectroquant® series, Merck Millipore, USA: total nitrogen (TN) – EN ISO 11905-1 [36] and DIN 38405-9 [37], total phosphorus as orthophosphate (TP) – EN ISO 6878:2005 [38].

Statistical processing of the data

All wastewater analyzes were performed in triplicate. The results obtained were summarized by determining the mean value and standard deviation (\pm SD). Data processing was performed using the MS Office Excel 2010 software product.

RESULTS AND DISCUSSION

Whey from the production of kashkaval and white brined cheese

Regardless of the type of end product, cheese production can be summarized in the following basic steps [39]. After removal of mechanical impurities and standardization in terms of casein and fat content, the milk is pasteurized and sent for biological ripening in stainless steel vessels. Subsequently, it is sent for

curdling under the influence of a milk coagulating enzyme. After the required technological time, the resulting coagulum is formed, pressed, salted and matured, packaged and turned into a commercial product [40,41]. The waste liquid component is referred to as whey [42].

In Table 1 the results of the study of whey formed during the production of Bulgarian white brined cheese and kashkaval from cow's and sheep's milk in P1 and P2 are presented. The obtained data is compared with the permissible standards for discharging industrial wastewater from the dairy industry into surface runoff water bodies [43].

The amount of separated whey in the different plants is similar - 75-90% from the volume of incoming milk, with average levels for cheese production 85-90% [44-46]. More whey is formed in the production of kashkaval than that of white brined cheese. The values are 11% higher when the raw material for kashkaval is sheep's milk and 3-10% higher – from cow's milk.

TS in the whey exceed 50 g/L [47], while TSS show wide variations for individual products, with the largest difference in the production of cow's milk cheese. Their content relative to TS is higher in sheep milk streams - 45% more for cheese whey in P1 and 14% - than the same in P2. Whey from P2 is richer in water-insoluble compounds in comparison with that of P1. In all cases, the TSS exceed the permissible values for discharge into water bodies by more than 99%.

Active reaction is important for the proper operation of water treatment processes [48,49]. The data report a typical slightly acidic environment [50] that prevails in whey from kashkaval production compared to that from white brined cheese. It is the lowest for cheese from cow's milk in P1: 5.28 pH units. According to Regulation 6, the specified indicator is in the standards only for whey from white brined cheese from sheep's milk. The low pH value and the high content of water-soluble components, such as lactose, can result in rapid spoilage of whey, which adversely affects its subsequent biological treatment [41,45,51].

In dairy wastewater, compounds with lipid nature are undesirable in concentrations above 10 mg/L [43]. Larger values pose risks of clogging the pipes in the sewage system or disrupting the aerobic environment during degradation of the different dairy pollutants [52,53]. The FOG content is higher in the whey from the kashkaval production and in raw sheep's milk (Table 1). The probable reason can be the fatter sheep's milk compared to cow's [54]. Fats predominated in the whey of P2 - an average of 501 mg/L, or 30 mg/L more than P2. It was highest in the waste streams of sheep's kashkaval - 750 mg/L, and lowest - for white brined cheese from cow's milk - 310 mg/L, respectively 75 and 31 times above the permitted values [43].

The choice of wastewater treatment methods directly depends on BOD₅ and COD concentrations [55,56]. The prevailing limit for wastewater from food processing plants under BOD₅ is 50 mg/L, while for COD it is 250 mg/L [43]. Among all waste streams from the dairy industry, cheese whey is the most loaded by these indicators [46,47], with values of BOD₅ – 19,000-35,010 mg/L and COD – 54,100-68,300 mg/L which is 99% more than Bulgarian laws allow. Whey from sheep's milk is more contaminated than the same from cow's milk - on average 3.7 times more by BOD₅ for P1 and 2.7 times more by COD for P2. The high concentration of these pollutants in whey attracts the attention to use anaerobic methods for their utilization [57-59].

The BOD₅:COD ratio is important for proper determination the level of biodegradability and the technological features of wastewater treatment [60]. If it is above 0.5-0.6, the water can be purified biologically [61]. For P1, only kashkaval whey from sheep's milk (K^{SM_1}) met the above requirements with a value of 0.51, but for P2 it was achieved both at kashkaval whey from sheep's milk (K^{SM_2}) - 0.54 and yellow cheese whey from cow's milk (K^{CM_2}) - 0.61. The results for the other types of whey exceed 0.3. This indicates that they must be purified physico-chemically before they can undergo biological treatment methods [62].

Wastewater TN and TP are related to eutrophication processes in water basins [20,63]. All samples analyzed show that these biogenic elements exceed many times the emission norms [43]. Greater concentrations of TN were found in raw sheep's milk, in the production of kashkaval and in P2. The indicated conclusions do not apply to TP. The least polluted in terms of TN and TP is white brined cheese whey from cow's milk manufactured in P1 (WBC^{CM_1}), with 180 mg/L and 37 mg/L, respectively. The maximum load for TN is K^{SM_2} – 5,320 mg/L, while for TP is K^{CM_1} - 620 mg/L.

The COD:N ratio is critical for proper operation of anaerobic systems. 40:1 is considered as optimal value, although other authors share the successful operation of reactors at 80-160:1 [64,65]. Only three of the tested whey samples approach the optimal characteristics - K^{SM_1} - 41:1, white brined cheese whey from sheep's milk manufactured in P1 (WBC^{SM_1}) - 53:1 and K^{CM_1} - 131:1. Carbon compounds predominate in K^{CM_1} . Whey from P2 has high concentrations of nitrogenous compounds - COD:N varies 13-22:1, which can create conditions for NH₃ formation and poses a risk of inhibiting biogas fermentation [66].

In well-functioning anaerobic plants, COD:P is 80-200:1 [65]. Only WBC^{CM_1} is outside the specified limits with a value of 1487:1.

Table 1. Characterization of whey from yellow and white brined cheese

Indicator	Unit	K SM ₁	K SM ₂	K ^{CM} ₁	K ^{CM} ₂	WBC SM ₁	WBC ^{CM} ₂	WBC ^{CM} ₁	WBC ^{CM} ₂	Permissible values [43]
Whey:milk	m ³ /m ³	0.84	0.85	0.87	0.90	0.75	0.76	0.84	0.81	-
TS	mg/L	69,300±620	67,500±400	65,500±621	63,500±451	57,050±225	54,200±400	62,000±721	52,800±511	-
TSS	mg/L	34,210±330	35,110±201	17,780±211	28,580±151	24,080±145	24,620±312	21,000±264	22,000±205	50
Active reaction	pH	5.60±0.02	5.60±0.04	5.28±0.05	5.61±0.04	6.03±0.05	6,05±0.05	5.60±0.12	5.80±0.05	6.0-9.0
FOG	mg/L	545±55.8	750±58.2	510±565.0	530±33.0	445±55.2	415±22.5	380±56.0	310±48.0	10
BOD ₅	mg/L	35,010±250	37,100±223	19,590±211	33,200±200	27,270±442	26,400±99	19,000±191	24,089±59	50
COD	mg/L	68,300±751	68,108±100	63,000±751	54,100±105	57,000±338	62,200±126	55,000±481	55,440±66	250
TN	mg/L	1,650±54.0	5,320±64.0	480±23.5	3,280±15.5	1,080±44.5	2,996±50.5	180±25.0	2,480±15.0	10
TP	mg/L	380±35.0	399±25.8	620±22.2	425±23.8	364±11.5	369±19.0	37±4.0	302±2.0	2
BOD ₅ :COD	-	0.51	0.54	0.31	0.61	0.48	0.42	0.35	0.43	-
COD:TN	-	41:1	13:1	131:1	16:1	53:1	21:1	306:1	22:1	-
COD:TP	-	180:1	171:1	102:1	127:1	157:1	169:1	1487:1	184:1	-

Dairy plant 1: KSM₁, K^{CM}₁ – kashkaval whey from sheep's and cow's milk, respectively; WBCSM₁, WBC^{CM}₁ – white brined cheese from sheep's and cow's milk, respectively; Dairy plant 2: KSM₂, K^{CM}₂ – kashkaval whey from sheep's and cow's milk, respectively; WBCSM₂, WBC^{CM}₂ – white brined cheese whey from sheep's and cow's milk, respectively; TS – total solids, TSS – total suspended solids, FOG – fat, oil and grease; BOD₅ – biological oxygen demand for 5 days; COD – chemical oxygen demand; TN – total nitrogen; TP – total phosphorus

Secondary whey from the production of kashkaval and white brined cheese

Whey is a secondary product in the kashkaval and white brined cheese manufacturing [67]. It is often used as a raw material for obtaining other dairy products [68]. The fat is separated from the whey, while residual proteins are filtered through a cloth or membrane resulting whey curd [47,69]. The waste permeate forms the so-called second cheese whey (SCW) [70]. Although the last is most commonly disposed of in waste streams, it is less studied than whey [47,71].

In Table 2 the results of the characterization of SCW obtained during the production of cottage cheese by filtration through cloth in P1 and through a membrane in P2 are summarized. The volume of SCW is similar in the different industries – on average about 0.91 m³/m³ of milk.

Tatoulis, 2014 summarized that the TS concentration in the SCW did not differ from that in the whey [71]. Our results support the mentioned statement. However, the data from Table 2 shows a decrease in this indicator, which for P1 is in the range of 5-23.5%. The probable reason for the wide range of the TS reduction is due to the different types of raw materials being processed – sheep's kashkaval and white brined cheese whey (SCWSM₁) and cow's cheese whey (SCW^{CM}₁). In P2, where curd is produced by means of membrane retention of whey proteins, the reduction of TS exceeds 92%. One of the biggest advantages of membrane technologies over cloth filtration is the ability to retain smaller protein fractions, resulting in cleaner waste streams [71]. In support of this statement, the lower amounts of suspended matter in the SCW are visible. Their concentration in SCW₂ is over 87% less than that in Plant 1.

The active reaction of SCW is more acidic than whey [71]. In the SCW from P2 (SCW₂) it reaches 5.81, while for P1 it is about 4.55 pH units.

The higher fat content of sheep's milk is reflected in the quality of the SCW. FOG in SCWSM₁ is 305 mg/L, which is 30 times higher than the permissible values or 59.7% more than the same in SCW^{CM}₁. But not found in SCW₂. By retaining milk fats, membrane technologies contribute to shortening the technological steps in the treatment of dairy wastewater [72,73].

Undoubtedly, BOD and COD most strongly influence the selection of appropriate technologies for processing waste streams [74]. High values of these indicators are found for SCWSM₁ and SCW^{CM}₁, making them available mainly for anaerobic processes [47]. But COD at SCW₂ is only 2500 mg/L and BOD₅ is 954 mg/L. Low pollutant concentrations suggest the possibility of using aerobic biological treatment of SCW₂ [73]. However, here BOD₅:COD is around 0.38 – below the 0.5 limit for successful aerobic microbial treatment [75,76]. Furthermore, nitrogen compounds should be about 1:20 of the biodegradable pollutants [77,78], and here BOD₅:N is 119:1. The lack of N in combination with rapidly digestible BOD in the form of lactose can lead to fast development of filamentous microorganisms during wastewater treatment processes. This disrupts the formation and proper separation of activated sludge [79-81]. COD:N is about 312:1, which exceeds the possibilities for normal development of methanogenic bacteria [64,65]. An analogous conclusion can be drawn for SCWSM₁ and SCW^{CM}₁, where this ratio is even higher.

The TP content in SCW from the different productions is similar. It is highest in SCWSM₁ – 32 mg/L, followed by SCW₂ – 28 mg/L and SCW^{CM}₁ – 21 mg/L. The membrane technology implemented in P2 does not help to reduce phosphate compounds in SCW₂. This requires a TP separation step before discharge. Efficient biological elimination of TP from SCW₂ would be difficult because COD:P = 89:1, about 4.5 times the optimum [82]. Here, other possibilities for its removal should be sought [63,83,84].

Whey from the production of milk curd and pressed milk

Whey can be obtained from other dairy products [85]. In Table 2 the results of an analysis of whey formed during the production of milk curd (MW₃) and strained yoghurt milk (SYW₃) in P3 are described. Compared to the other types of whey, the amounts of MW₃ and SYW₃ are less than half of the manufactured milk. Contamination is closer to the SCW from P1. Significant differences are found in BOD, TN and TP content, which are much higher in P3 effluents.

Strained yoghurt production gives 400 L/m³ of milk more SYW₃ and more contaminated whey than milk curd processing. The content of TS and TSS is close, with 3.8% more for TS and 5.3% more for TSS in favor of SYW₃. Here, the active reaction is weakly acidic – 5.1, while in MW₃ – 4.7. FOG is 3 times more in SYW₃. It is noteworthy that BOD in MW₃ is lower by 7.8%, but COD exceeds the values in SYW₃ by about 8.7%. The likely reason is related to the presence of more difficult to oxidize compounds in the whey of milk curd. BOD₅:COD varies: 0.54-0.58, but suggests that these waste streams are suitable for biological treatment [76]. TN reaches 15,990 mg/L for SYW₃ and 11,320 mg/L for MW₃ and is the highest of all whey samples analyzed. The presence of high concentrations of nitrogen compounds will create a problem in anaerobic fermentation of whey [86,87]. The TP is closer to that in cheese whey, but it is 10 times higher than the same in SCW.

Table 2. Characterization of secondary whey from kashkaval and white brined cheese, milk curd and strained yoghurt

Indicator	Unit	SCW SM ₁	SCW ^{CM} ₁	SCW ₂	MW ₃	SYW ₃	Permissible values [43]
Effluent:milk	m ³ /m ³	0.90	0.91	0.92	0.38	0.28	-
TS	mg/L	59,900±334	50,100±291	4,990±4	50,008±205	52,006±181	-
TSS	mg/L	9,590±91	7,650±87	980±85	7,200±201	7,600±100	50
Active reaction	pH	4.60±0.15	4.50±0.02	5.81±0.10	4.70±0.05	5.10±0.03	6.0-9.0
FOG	mg/L	305±3,0	122,9±1,8	-	100±5,2	305±20,5	10
BOD ₅	mg/L	14,100±880	11,400±261	954±12.6	30,700±201	33,280±301	50
COD	mg/L	51,200±331	41,100±30	2,500±80	57,200±521	52,200±300	250
TN	mg/L	99±8.0	42±2.0	8±0.5	11,320±55.5	15,990±60.5	10
TP	mg/L	32.0±2.0	21±3.0	28±1.0	340±11.8	305±10.5	2
BOD ₅ :COD	-	0.28	0.28	0.38	0.54	0.58	-
COD:TN	-	517:1	979:1	313:1	5:1	4:1	-
COD:TP	-	1600:1	1957:1	89:1	168:1	188:1	-

Dairy plant 1: SCWSM₁, SCW^{CM}₁ – second cheese whey from (from kashkaval and white brined cheese production) sheep's and cow's milk (from kashkaval production), respectively; Dairy plant 2: SCW₂ – second cheese whey after membrane filtration unit; Dairy plant 3: MW₃ – whey from milk curd production, SYW₃ – strained yoghurt whey

Washing wastewater from the production of kashkaval, white brined cheese, whey and milk curd, yoghurt and strained yoghurt

A large part of the industrial waste streams of the dairy industry is formed by washing waters [88]. According to their purpose, they can be grouped into first wash water (WWI) - after pushing the milk and whey out of the apparatus and second wash water (WWII) - for cleaning the equipment after washing [89]. In Table 3 the values of pollution of the washing waters from the production of kashkaval, white brined cheese and whey curd from P1 (WW^I_1 and WW^{II}_1 , respectively) and P2 (WW^I_2 and WW^{II}_2 , respectively), and yoghurt, strained yoghurt and milk curd from P3 (WW^I_3 and WW^{II}_3 , respectively) are summarized.

In the most of the cases the amount of washing water exceeds the volume of milk. An exception can be made for WW^I_3 where 0.30 m^3 wash water is used per 1 m^3 milk. The common reason is due to the assortment diversity of the products received and the available production technologies. For P2, the wash flows reach $3.66 \text{ m}^3/\text{m}^3$ milk, followed by P1 – $2.44 \text{ m}^3/\text{m}^3$ milk and P3 – $3.07 \text{ m}^3/\text{m}^3$ milk. Also, the first wash waters are less compared to the second wash waters. The difference is particularly large in P3, where WW^I_3 is under 10 % from the total amount of wash water. Here, the main activity is focused on obtaining yogurt, which occupies almost the entire volume of milk, and not only its proteins. While whey are formed only from milk curd and strained yoghurt. Thus, the need for WW^I_3 is minimal as large volumes of whey do not need to be pushed out of the respective production vessels.

In the washing waters of cheese and whey curd, TSS exceed 60%. But in the case of yoghurt production – TSS are a little over 10%.

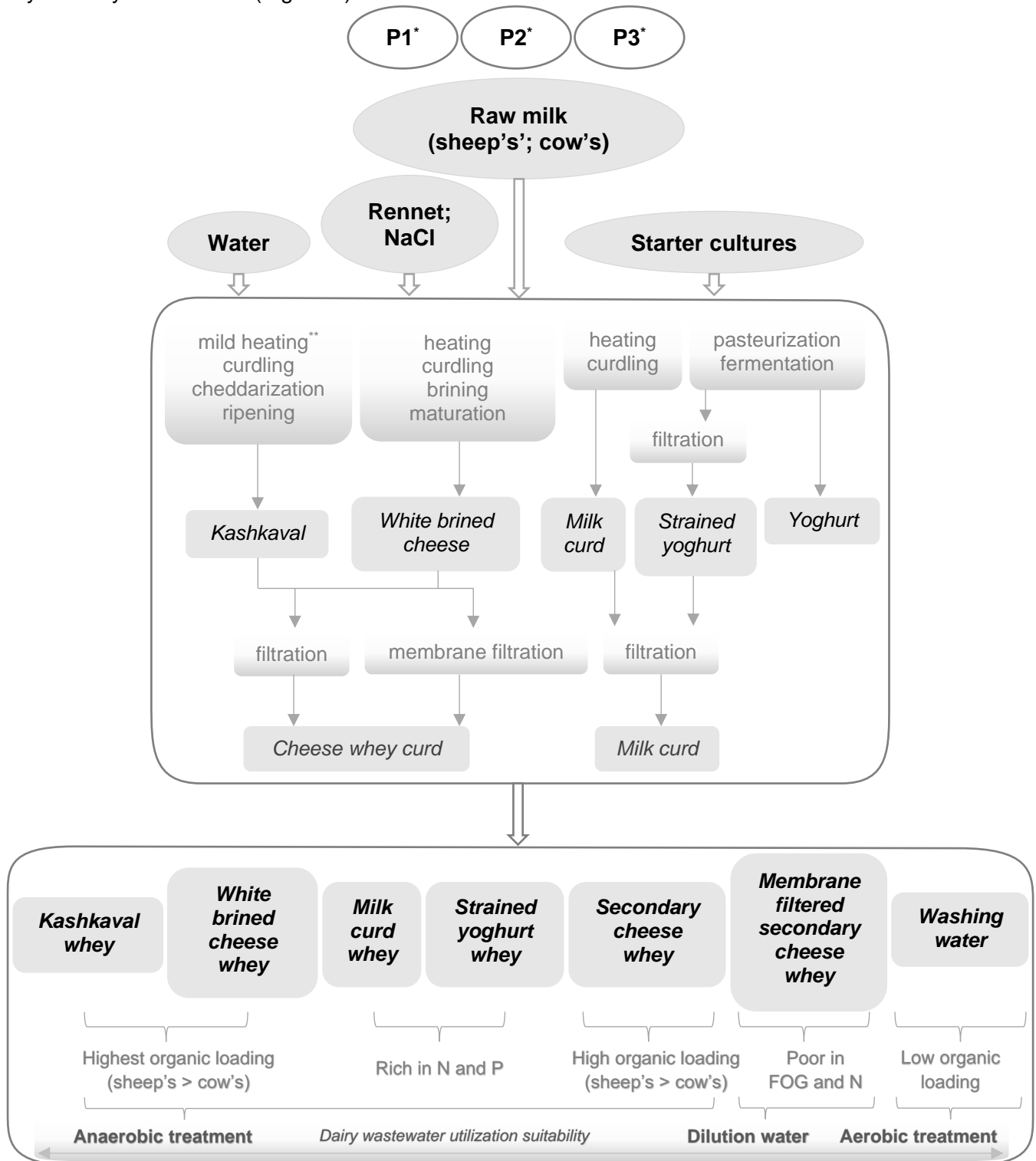
In all plants, the WW^I is more polluted than the WW^{II} . The active reaction is above 5. The washing waters from P3 have the lowest pH values – 5.1-5.3, while in P2 they exceed 6.6. FOG are not detected neither in the wash water of P2, nor in WW^{II}_1 , but in WW^I_3 they are 730 mg/L. In individual streams, BOD_5 varies from 400 to 706 mg/L, while COD – 650 to 1590 mg/L. The low pollution of these wastewaters allows application of aerobic treatment methods [90]. They can be more accessible for P2 and P3 where BOD:COD is over 0.5 [75]. For P1, BOD:COD reaches 0.41-0.42 – here it is necessary to use physicochemical processes first before microbial treatment [76]. In wash waters from P2, no TN is detected, making biological treatment difficult. A possible solution is to enrich these effluents with nitrogen compounds, combine them with domestic waste streams or apply for dilution of highly contaminated dairy wastewaters [91]. Wash waters from P1 and P3 are suitable for aerobic treatment. The high concentrations of FOG, TN and TP in P3 require an approach to separate lipids and eliminate biogenic elements from the waters before discharge into water bodies [92,93].

Table 3. Characterization of wash water from dairy plant 1, 2 and 3

Indicator	Unit	WW ^I ₁	WW ^{II} ₁	WW ^I ₂	WW ^{II} ₂	WW ^I ₃	WW ^{II} ₃	Permissible values [43]
Wash water:milk	m ³ /m ³	1.13	1.31	1.74	1.92	0.30	2.77	-
TS	mg/L	1,250±41	905±31	1,100±41	800±21	6,200±100	7,089±51	-
TSS	mg/L	782±65	550±21	760±36	510±30	1,800±103	720±72	50
Active reaction	pH	5.40±0.10	6.22±0.12	6.64±0.52	6.75±0.40	5.10±0.03	5.30±0.03	6.0-9.0
FOG	mg/L	73±3.6	-	-	-	730±53.0	10±0.5	10
BOD ₅	mg/L	660±44	450±20	706±9	510±23	700±157	400±185	50
COD	mg/L	1,590±31	1,100±21	1,316±92	985±105	1,200±85	650±61	250
TN	mg/L	69±10.5	20±1.5	-	-	380±11.0	50±1.0	10
TP	mg/L	18±2.0	11±2.0	31±1.0	29±1.8	300±23.0	30±2.0	2
BOD ₅ :COD	-	0.42	0.41	0.54	0.52	0.58	0.62	-
COD:TN	-	23:1	55:1	-	-	3:1	13:1	-
COD:TP	-	88:1	100:1	43:1	34:1	4:1	22:1	-

Dairy plant 1: WW^I₁, WW^I₂, WW^I₃ – washwater after milk and whey removal for dairy plant 1, 2 and 3, respectively; WW^{II}₁, WW^{II}₂, WW^{II}₃ – wash water after clean-in-place procedure for dairy plant 1, 2 and 3, respectively

The results of the analyses are summarized with the production technologies in a unified flow diagram, which can serve as a basis for creating a general model for the more effective treatment of waste streams from the dairy industry in the future (Figure 1).



*Legend: P1, P2, P3 – dairy plant 1, 2 and 3, respectively; **Technologies are adapted from [94]

Figure 1. Simplified flowchart from three Bulgarian dairy multiproduct plants and possible treatment options of derived wastewater streams.

CONCLUSION

Based on the studies carried out, the following more important conclusions can be summarized:

1. No significant differences are found in the waste streams from Bulgarian and foreign milk processing plants.
2. The most contaminated are the whey from the production of kashkaval and white brined cheese with the raw material - sheep's milk.
3. The cleanest effluents are the washing waters, but they fill the largest volume compared to the raw milk.
4. Membrane technologies create conditions for a more complete utilization of the whey, but they reduce the possibilities for biological treatment of the wastewaters coming out of them.
5. Anaerobic methods are more suitable for treating whey, while aerobic methods - for washing waters.

Whey and washing waters from the production of yogurt, milk curd and strained yoghurt are more loaded with biogenic elements than those from the production of kashkaval and white brined cheese.

Conflicts of Interest: All authors state that there are no conflict of interest concerning the manuscript “Comparative Analysis of Wastewaters from Three Bulgarian Dairy Multiproduct Plants”.

REFERENCES

1. Aleksandrova L, Mihailov V. National Dairy Association: There is enough Bulgarian raw material. [Internet] 2020 [cited: 2023 March 12]. Available from: <https://agrozona.bg/vladislav-mihaylov-natsionalnata-asotsiatsiya-na-mlekoprerabotvatelite-balgarska-surovina/>. (In Bulgarian)
2. Status and trends of the production of milk and milk products in Bulgaria. Ministry of Agriculture and Food. Directorate of Market Measures and Producer Organizations. [Internet] 2018 [cited: 2023 Feb 22]; Available from: https://www.mzh.government.bg/media/filer_public/2018/03/01/mliako.pdf. (In Bulgarian)
3. Sectoral analysis in the milk processing sector. Current trends, issues and needs. Project BG051PO001-2.1.06. Development and implementation of an information system for assessing the competencies of the workforce by branches and regions. Bulgarian Industrial Association. Sofia, Bulgaria. [Internet] 2013 [cited: 2023 May 25]; Available from: https://www.bia-bg.com/uploads/files/analysis/ISOK/533_16-Mlekoprerabotvane-2013_signed.pdf. (In Bulgarian)
4. Milk products. Plovdiv, Bulgaria: Dimitar Madjarov. [Internet] 2023 [cited: 2023 March 28]; Available from: <https://madjarov.bg/product-category/mlechni-produkti/>. (In Bulgarian)
5. Products. Sofia, Bulgaria: Milky Group Bio Private Limited Company. [Internet] 2023 [cited: 2023 March 24]; Available from: <https://sayana.bg/>. (In Bulgarian)
6. Products. Domlyan, Karlovo, Bulgaria: Polyday-2. [Internet] 2023 [cited: 2023 March 29]; Available from: <https://domlian.com/products/>. (In Bulgarian)
7. Our products. Ovcharovo, Dobrich, Bulgaria: Dobruja Dairy Company. [Internet] 2023 [cited: 2023 March 29]; Available from: <https://dobrotitsa.bg/produkti/>. (In Bulgarian)
8. Products. Sofia, Bulgaria: Milk products. Zorov 91. [Internet] 2023 [cited: 2023 March 29]; Available from: <https://parshevitsa.com/produkti/>. (In Bulgarian)
9. Products. Plovdiv, Bulgaria. United Milk Company Private Limited Company [Internet] 2023 [cited: 2023 March 29]; Available from: <https://vereia.bg/groups/>. (In Bulgarian)
10. Prashanthi M, Sundaram R. Integrated waste management in India. Environmental science and engineering. Cham: Springer; 2016. Part V, Impact of waste on human health and community participation in waste management. Impact of dairy effluent on environment – a review; p. 239-249.
11. Stasinakis AS, Charalambous P, Vyrides. Dairy wastewater management in EU: produced amounts, existing legislation, applied treatment processes and future challenges. J Envir Manag 2022;303:114152.
12. Rivas J, Prazeres AR, Carvalho F. Aerobic biodegradation of precoagulated cheese whey wastewater. J Agric Food Chem 2011;59:2511–7.
13. Salas-Vargas C, Brunett-Pérez L, Espinosa-Ortiz VE, Martínez-García CG. Environmental impact of Oaxaca cheese production and wastewater from artisanal dairies under two scenarios in Aculco, State of Mexico. J Clean Prod 2021;311:127586.
14. Elliot S. Reference module in earth systems and environmental sciences. London: Elsevier; 2015. Wastewater treatment & water reclamation; p. 2-4.
15. Kaur N. Different treatment techniques of dairy wastewater. Gr Sust Dev 2021;14:100640.

16. Meneses YE, Flores RA. Feasibility, safety, and economic implications of whey-recovered water in cleaning-in-place systems: a case study on water conservation for the dairy industry. *J Dairy Sci* 2016;99(5):3396-407.
17. Farizoglu B, Keskinler B, Yildiz E, Nuhoglu A. Simultaneous removal of C, N, P from cheese whey by jet loop membrane bioreactor (JLMBR). *J Hazard Mater* 2007;146:399–407.
18. Sar T, Harirchi S, Ramezani M, Bulkan G, Akbas M, Pandey A, et al. Potential utilization of dairy industries by-products and wastes through microbial processes: a critical review. *Sci Tot Envir* 2021;810:152253.
19. Zandona E, Blažič M, Jambrak AR. Whey utilization: sustainable uses and environmental approach. *Food Technol Biotechnol* 2021;59(2):147-61.
20. Stancheva M, Yemendzhiev H, Nenov V. Phosphorus recovery from dairy processing waste streams. *J Chem Technol Metall* 2022;57(1):119-125.
21. Vasina AI, Basamykina AN. Local wastewater treatment plant for dairy production: challenges and solutions. In: 2022 IOP Conference Series: Earth and Environmental Science. 2022;988:032077.
22. Struk-Sokołowska J, Rodziewicz J, Mielcarek A. Effect of dairy wastewater on changes in COD fractions in technical-scale SBR type reactors. *Wat Sci Technol* 2017;1:156-69.
23. Ghatawat P, Vankar Y, Dhume S, Chendake Y. Separation and recovery of milk components from dairy effluent. *Int J Eng Res Technol* 2019;8(6):884-8.
24. Moo-Young, M, Anderson, WA, Chakrabarty, AM. Environmental biotechnology. Dordrecht: Springer; 1995. Full scale anaerobic treatment of dairy wastewater using the SNC multiplate reactor; p. 544-5.
25. Ekka B, Mieriņa I, Juhna T, Turks M, Kokina K. Quantification of different fatty acids in raw dairy wastewater. *Cleaner Eng Technol* 2020;7:100430.
26. Demirel B, Yenigun O, Onay TT. Anaerobic treatment of dairy wastewaters: a review. *Process Biochem* 2005;40:2583–95.
27. Wang, LK, Hung, YT, Lo, HH, Yapijakis, C. Waste treatment in the food processing industry. Boca Raton: CRC Press; 2006. Chapter 1, Treatment of dairy processing wastewaters; p.1–25.
28. Joshiba GJ, Kumar PS, Femina CC, Jayashree E, Racchana R, Sivamesan S. Critical review on biological treatment strategies of dairy wastewater. *Desal Wat Treat* 2019;160:94-109.
29. Nikolova M, Panayotov P, Taneva D. Characteristics of wastewaters from the production of yellow and white brined cheese in Bulgaria and possibilities for their treatment. In:2019 Youth Forum. Science, Technologies, Innovations and Business; 2019 May 30 - 31, Plovdiv: Non-Profit Association, Territorial Organization of Scientific and Technical Union with Home of Science and Technology, Plovdiv. (In Bulgarian)
30. International Organization for Standardization. ISO 5667-10:2020. Water quality – sampling – Part 10 – Guidance on sampling of wastewater. Geneva: ISO; 2020.
31. Bulgarian institute for standardization. BDS 17.1.4.04:1980. Nature protection. Hydrosphere. Water quality indicators. Method for determining the content of total solids, undissolved and dissolved substances. Sofia: BDS; 1980. (In Bulgarian)
32. Bulgarian institute for standardization. BDS 17.1.4.27:1980. Nature protection. Hydrosphere. Water quality indicators. Method for determining pH. Sofia, Bulgaria: BDS; 1980. (In Bulgarian).
33. Environmental protection agency. Method 1664. N-hexane extractable material. Washington: EPA; 2010.
34. International Organization for Standardization. ISO 1899:2004. Water quality - Determination of biochemical oxygen demand after n days (BOD_n). Geneva: ISO; 2004.
35. International Organization for Standardization. ISO 6060:2020. Water quality — Determination of the chemical oxygen demand. Geneva: ISO; 2020.
36. International Organization for Standardization. ISO 11905-1:2001. Water quality - Determination of nitrogen - Part 1: Method using oxidative digestion with peroxodisulfate. Geneva: ISO; 2001.
37. Deutsches Institut für Normung. DIN 38405-9. German standard methods for examination of water, waste water and sludge - Anions (group D) - Part 9: Spectrometric determination of nitrate. Berlin: DIN; 2011.
38. International Organization for Standardization. ISO 6878:2004. Water quality - Determination of phosphorus - Ammonium molybdate spectrometric method. Geneva: ISO; 2004.
39. Shivarov, M. Dairy technology: Sofia: Zemizdat; 1993. General technological scheme for the production of cheese; p. 15-216. (In Bulgarian)
40. Walstra P, Wouters JTM, Geurts. Dairy science and technology, 2nd ed. Taylor & Francis Group; 2006. Principles of cheese making; p. 577-581.
41. Wang LK, Tay JH, Tay STL, Hung YT. Handbook of environmental engineering, vol. 11. Environmental bioengineering. New York: Humana Press, Springer; 2010. Anaerobic treatment of milk processing wastewater; p. 555–618.
42. Dos Reis Coimbra JS, Teixeira JA. Engineering aspects of milk and dairy products. CRC Press, Taylor & Francis group; 2010. Applications of membrane technologies in the dairy industry; p. 33-34.
43. Regulation 6 on emission norms for the permissible content of harmful and dangerous substances in waste water discharged into water bodies 2000 (Bul). [Internet] 2000 [cited: 2022 December 17]; Available from: <https://eea.government.bg/bg/legislation/water/nared6.pdf>. (In Bulgarian)
44. Scott R, Robinson RK, Wilbey RA. Cheesemaking practice. Boston: Springer; 1998. Chapter 18, Cheese whey and its uses; p. 320-1.

45. El-Tanboly E, EL-Hofi M. Recovery of cheese whey, a by-product from dairy industry for use as an animal feed. *J Nutr Health Food Eng* 2017;6(5):148-54.
46. Grumezescu AM, Holvan AM. Milk-based beverages. Woodhead publishing; 2019. Chapter 14, Dairy and nondairy-based beverages as a vehicle for probiotics, prebiotics, and symbiotics: alternatives to health versus disease binomial approach through food; p. 473-520.
47. Pires AF, Marnotes NG, Rubio OD, Garcia AC, Pereira CD. Dairy by-products: a review on the valorization of whey and second cheese whey. *Foods* 2021;10(1067):1-24.
48. Bazin MJ, Prosser JL. Physiological models in microbiology. vol. 1., 1st ed. Boca Raton: CRC Press; 1988. Chapter 6, Role of pH in biological wastewater treatment processes; p. 76-86.
49. Luo J, Ding LH. Influence of pH on treatment of dairy wastewater by nanofiltration using shear-enhanced filtration system. *Desalination* 2011;278(1-3):150-6.
50. Kumar N. The four fs for whey utilization. *Bev Food World* 2016;43(1):28-31.
51. Prazeres AR, Carvalho F, Rivas J. Cheese whey management: a review. *J Envir Man* 2012;110:48–68.
52. Sello M. Wastewater fats, oils and grease characterization, removal and uses. A review. *Env Sci Ind J* 2021;17(10):200.
53. He X, Iasmin M, Dean LO, Lappi SE, Ducoste JJ, de los Reyes FL. Evidence for fat, oil and grease (FOG) deposit formation mechanisms in sewer lines. *Envir Sci Technol* 2011;45(10):4385-91.
54. Mollica MP, Trinchese G, Cimmino F, Penna E, Cavaliere G, Tudisco R, et al. Milk fatty acid profiles in different animal species: focus on the potential effect of selected PUFAs on metabolism and brain functions. *Nutrients* 2021;13(4):1111.
55. Dhall P, Siddiqui TO, Ahmad A, Kumar R, Kumar A. Restructuring BOD:COD ratio of dairy milk industrial wastewaters in BOD analysis by formulating a specific microbial seed. *The Sci World J* 2012;105712:1-7.
56. Abdalla KZ, Hammam G. Correlation between biochemical oxygen demand and chemical oxygen demand for various wastewater treatment plants in Egypt to obtain the biodegradability indices. *Int J Sci: Basic Appl Res* 2014;13(1):42-48.
57. Nyaki A, Njau K. Assessment of dairy wastewater treatment and its potential for biogas production at Tanga Fresh Limited. *Tanz J Sci* 2016;45(1):120-33.
58. Wang LK, Hung YT, Lo HH, Yapijakis C. Handbook of industrial and hazardous wastes treatment. 2nd ed. CRC Press; 2004. Chapter 13, Treatment of dairy processing wastewaters; p. 619-643.
59. Strydom JP, Mostert JF, Britz TJ. Anaerobic digestion of dairy factory effluents. *Water Research Report № 455*. [Internet] 2001 [cited: 2023 May 25]; Available from: <https://www.wrc.org.za/wp-content/uploads/mdocs/455-1-01.pdf>.
60. Andrio D, Asmura J, Yenie E, Putri K. Enhancing BOD₅/COD ratio co-substrate tofu wastewater and cow dung during ozone pretreatment. In: MATEC Web of Conferences 2019. International Conference on Advances in Civil and Environmental Engineering, 2018 Oct 24 - 25; Bali. 276(06027):1-6.
61. Dinçer AR. Increasing BOD₅/COD ratio of non-biodegradable compound (reactive black 5) with ozone and catalase enzyme combination. *SN Appl Sci* 2020;2:736.
62. Leena AV, Meiaraj DC, Balasundaram DN. BOD/COD a measure of dairy waste treatment efficiency – a case study. *IOSR J Mech Civ Eng* 2016;13(5):107-14.
63. Numviyimana C, Warchol J, Izydorczyk G, Basladyńska S, Chojnacka K. Struvite production from dairy processing wastewater: Optimizing reaction conditions and effects of foreign ions through multi-response experimental models. *J Taiwan Inst Chem Eng* 2020;117:182-9.
64. Frigon JC, Bruneau T, Moletta R, Guiot SR. Coupled anaerobic-aerobic treatment of whey wastewater in a sequencing batch reactor: proof of concept. *Water Sci Technol* 2007;55(10):201-8.
65. Zappi M, Fortela DL, Sharp W, Bajpai R, Gang D, Holmes W, et al. Evaluation of the methane production potential of catfish processing wastewater using various anaerobic digestion strategies. *Processes* 2019;7(368):1-15.
66. Fricke K, Santen H, Wallmann R, Hüttner A, Dichtl N. Operating problems in anaerobic digestion plants resulting from nitrogen in MSW. *Waste Man* 2007;27:30-43.
67. Baltadjieva M, Slavchev G. Book for white brined cheese. Plovdiv: Academic Publishing House of UFT; 2003. Types of brined cheese – general characteristics. p. 5-68.
68. Mehra R, Kumar H, Kumar N, Ranvir S, Jana A, Buttar HS, et al. Whey proteins processing and emergent derivatives: an insight perspective from constituents, bioactivities, functionalities to therapeutic applications. *J Func Foods* 2021;87(104760):1-17.
69. Robinson, RK. Modern dairy technology, vol. 2. Advances in milk products, 2nd ed. Blackie academic & professional, an imprint of Chapman & Hall; 2003. Chapter 2, Modern cheesemaking: hard cheeses. p. 49-217.
70. Rollini M, Musatti A, Cavicchioli D, Bussini D, Farris D, Farris S, et al. From cheese whey permeate to sakacin-A/bacterial cellulose nanocrystal conjugates for antimicrobial food packaging applications: a circular economy case study. *Sci Rep* 2020;10:21358.
71. Tatoulis T, Tekerlekopoulou A, Akratos C, Pavlou S, Vayenas D. Aerobic biological treatment of second cheese whey in suspended and attached growth reactors. *J Chem Technol Biotechnol* 2015;90(11):2040-9.
72. Reig M, Vecino X, Cortina JL. Use of membrane technologies in dairy industry: an overview. *Foods* 2021;10(2678):1-29.

73. Birwal P, Deshmukh G, Priyanka SP, Saurabh SP. Advanced technologies for dairy effluent treatment. *J Food Nutr Popul Health* 2017;1(1:7):1-5.
74. Moujдин IA, Summers JK. Promising techniques for wastewater treatment and water quality assessment. *IntechOpen*; 2020. Emerging trends in wastewater treatment technologies: The current perspective.
75. Srinivas T, 2008. *Environmental Biotechnology*. New Delhi: New Age International (P) Limited, Publishers; 2008. Water and Wastewater, p. 27.
76. Chan Y, Chong M, Law C, Hassell D. A review on anaerobic-aerobic treatment of industrial and municipal wastewater. *Chem Eng J* 2009;155(1-2):1-18.
77. Jördening HJ, Winter J. *Environmental biotechnology: concepts and applications*. Weinheim: Wiley-VCH Verlag GmbH & Co. KGaA; 2005. Chapter 2, Industrial wastewater sources and treatment strategies; p. 69-70.
78. Slade AH, Thorn GJ, Dennis MA. The relationship between BOD:N ratio and wastewater treatability in a nitrogen-fixing wastewater treatment system. *Water Sci Technol* 2011;63(4):627-32.
79. Treatment Plant Operators. Wisconsin: Eagle River. COLE Publishing. Optimal nutrient ratios for wastewater treatment. [Internet] 2018 [cited 2023 May 17]; Available from: https://www.tpomag.com/whitepapers/details/optimal_nutrient_ratios_for_wastewater_treatment_sc_001fa
80. Gutierrez J. Nitrogen deficiency and its effect on floc formation and sludge dewatering. Madison, Wisconsin: Aquafix Incorporated [Internet] 2020 [cited 2023 April 12]; Available from: <https://teamaquafix.com/low-nitrogen-effects/>.
81. Meniscus. Bulking in the activated sludge process Huntingdon [Internet] 2022 [cited 2023 April 19]; Available from: <https://www.meniscus.co.uk/bulking-in-the-activated-sludge-process/>.
82. Jördening HJ, Winter J. *Environmental biotechnology: concepts and applications*. Weinheim: Wiley-VCH Verlag GmbH & Co. KGaA; 2005. Chapter 1, Bacterial metabolism in wastewater treatment systems, p. 1-48.
83. Balamane-Zizi O, Ait-Amar H. Combined processes for Phosphorus removal from a dairy plant wastewater: Conditions influencing the chemical process. *J Env Sci Technol* 2009;2:112-9.
84. Lavanya A, Thanga RSK. Effective removal of phosphorous from dairy wastewater by struvite precipitation: process optimization using response surface methodology and chemical equilibrium modeling. *Sep Sci Technol* 2020;56(2):395-410.
85. Rocha-Mendoza D, Kosmerl E, Krentz A, Zhang L, Badiger S, Miyagusuku-Cruzado G, et al. Invited review: Acid whey trends and health benefits. *J Dairy Sci* 2021;104:1262-75.
86. Wagner AO, Hohlbrugger P, Lins P, Illmer P. Effects of different nitrogen sources on the biogas production – a lab-scale investigation. *Mic Res* 2012;167(10):630-6.
87. Grof N, Hutnan M. Anaerobic fermentation of substrate with high nitrogen content. *Chem biochem eng quart* 2021;35(3):345-53.
88. Boguniewicz-Zablocka J, Klosok-Bazan I, Naddeo V. Water quality and resource management in the dairy industry. *Environ Sci Pollut Res Int* 2019;26(2):1208–16.
89. Andreev A, Shivarov M. Technological equipment in the dairy industry. Sofia: Zemizdat; 1992. Installations for washing the machines, devices and facilities in the dairy industry; p. 188-196. (In Bulgarian)
90. Tocchi C, Federici E, Fidati L, Manzi R, Vincigurerra V, Petruccioli M. Aerobic treatment of dairy wastewater in an industrial three-reactor plant: Effect of aeration regime on performances and on protozoan and bacterial communities. *Wat Res* 2012;46(10):3334-44.
91. Carvalho M, Prazeres A, Rivas J, 2013. Cheese whey wastewater: Characterization and treatment. *Sci Tot Envir* 2013;445-446C:385-96.
92. Broughton A, Pratt S, Shilton A. Enhanced biological phosphorus removal for high-strength wastewater with a low rbCOD:P ratio. *Biores Technol* 2008;99(5):1236-41.
93. Balamane-Zizi O, Ait-Amar H. Biological phosphorus removal from dairy wastewater by alternating anaerobic and aerobic conditions. *Afr J Biotechnol* 2012;11(46):10575-81.
94. Petrova P, Ivanov I, Tsigoriyna L, Valcheva N, Vasileva E, Parvanova-Mancheva T, et al. Traditional Bulgarian dairy products: ethic foods with health benefits. *Microorganisms* 2021; 9(480): 1-21.



© 2024 by the authors. Submitted for possible open access publication under the terms and conditions of the Creative Commons Attribution (CC BY) license (<https://creativecommons.org/licenses/by/4.0/>)