

Economic model for obtaining cyclodextrins from commercial cgtase

Luciana Numata Koga¹, Vanderson Carvalho Fenelon¹, Juliana Harumi Miyoshi¹, Cristiane Moriwaki¹, Kamila Byanca BaldinWessel², Camila Sampaio Mangolim³, Graciette Matioli^{1*}

¹Department of Pharmacy, State University of Maringá, Maringá, Paraná, Brazil, ²Postgraduate in Biotechnology, State University of Londrina, Londrina Brazil, ³Department of Management and Industrial Technology, Federal University of Paraíba, Paraíba, Brazil

A repetitive batch process was employed followed by membrane ultrafiltration system to produce low-cost cyclodextrins (CDs) using commercial enzymes Toruzyme® cyclomaltodextrin glucanotransferase (CGTase) and its kinetic parameters were determined. The ultrafiltration system enabled the removal of inhibitory products from the reaction medium, allowing the enzyme to be recovered for reuse. A 10 kDa membrane was used to separate the different CDs produced by the CGTase. The substrates evaluated were maltodextrin, corn starch and cassava starch at 5, 10 and 15% (w/V), in the presence and absence of 10% (V/V) ethanol. After reaction for 132 h, 10% (w/V) cassava starch in the presence of ethanol provided the best results with 32.1 mg/mL of β -CD. Maximum production occurred after 72 h of reaction, with a yield of 87.4% of β -CD and α -CD, β -CD and γ -CD production ratio of 1:1:0.08 g, respectively. When eight repetitive batches of 72 h followed by ultrafiltration and crystallization of β -CD were performed, 2.1 g of precipitate was obtained with a purity of 67.6% β -CD. The supernatant from the crystallization process was lyophilized and resulted in 35.3% α -CD. The developed model can be used industrially for the production of low cost CDs from easily obtained raw material.

Keywords: Cyclodextrin. Commercial CGTase. Ultrafiltration. Repetitive batches. Starch.

INTRODUCTION

Cyclodextrins (CDs) are cyclic oligosaccharides composed of glucose units connected by α -1,4-linked glycosidic bonds. The most commonly found are generally α -CD (cyclohexaamylose), β -CD (cycloheptaamylose) and γ -CD (cyclooctaamylose), which consist of 6, 7 and 8 glucose units, respectively. They have a truncated cone shape with an apolar central cavity and the capacity to encapsulate several molecules, modifying their physicochemical properties. The outer part is polar, which allows the solubilization of the

encapsulated apolar molecules (Szejtli, 1998). They can therefore be used to increase the solubility of the host molecule in water, reducing volatility, increasing the stability of the host molecule, and masking unpleasant flavors. These and other properties make CDs suitable for application in the pharmaceutical, food, textile and other industries (Slomińska, Szostek, Grześkowiak, 2002; Tiwari, Tiwari, Raia, 2010; Kurkov, Loftsson, 2013).

Cyclodextrins are produced by the action of the cyclomaltodextrin glucanotransferase enzyme (CGTase - EC 2.4.1.19), which uses starch as a substrate. They are formed by the reversible reactions of intramolecular transglycosylation, or cyclization. However, CGTase enzymes are also active in intermolecular transglycosylation reactions (coupling

*Correspondence: G. Matioli. Universidade Estadual de Maringá. Departamento de Farmácia – Laboratório de Biotecnologia Enzimática. Av. Colombo 5790, BL P02; CEP: 87020-900 - Maringá-PR, Brasil. Phone: +55 44 30113868. E-mail: gmatioli@uem.br

and disproportionation) and, to a lesser extent, in the hydrolysis reactions of starch (Han *et al.*, 2014).

The enzyme commercially known as Toruzyme[®] is a CGTase solution derived from a *Bacillus* lineage that received the CGTase gene from a strain of *Thermoanaerobacter* sp., which is commercialized by Novozymes A/S (Krogshoejvej 362880 - Bagsvaerd - Denmark). The CGTase of *Thermoanaerobacter* sp has significant starch hydrolysis capacity, is resistant to high temperatures, and produces similar quantities of α - and β -CDs and low amounts of γ -CD (Norman, Jorgensen, 1992).

Certain factors involved in the production process of CDs can limit the conversion of the substrate, such as the reaction products (linear maltodextrins and the concentration of formed CDs). Previous studies have aimed to minimize these factors, including through the ultrafiltration process (Fenelon *et al.*, 2015; Caiming *et al.*, 2016; Fenelon *et al.*, 2018). CGTase, cassava starch and other oligosaccharides have a higher molar mass than CDs and when using a 10 kDa membrane ultrafiltration system, for example, the molecules are retained while the three types of CDs are filtered, keeping the reaction medium free of inhibitors. In this way, the yield of CDs can be improved by the removal of the inhibitory products that accumulate in the reaction mixture.

Fenelon *et al.*, 2018 evaluated different strategic models for CD production by the CGTase of *Bacillus firmus* strain 37. Some of these strategies used repetitive batches in ultrafiltration systems and all of them were efficient to separate CGTase from its inhibitory products and to enable its reuse, giving satisfactory CD yield.

The use of ethanol in the production of CDs prevents hydrolytic reactions, as it excludes water molecules from the active center of the enzyme and also prevents reverse reactions, delaying the decomposition of the CDs formed. This additive can be easily evaporated and reused and also reduces the possibility of microbial contamination during the process.

Ethanol concentration above 20% may cause denaturation of the enzyme, inactivating it. The presence of ethanol is favorable when using high starch concentrations (Mattsson *et al.*, 1991; Calsavara *et al.*, 2011; Fenelon *et al.*, 2015).

One example of the use of cassava substrate in the production of CDs is the state of Paraná, which is responsible for more than 65% of cassava starch production in Brazil, supplying the chemical, medicinal and food industries in the country (SEAB, 2018).

According to the Centro de Estudos Avançados em Economia Aplicada da Escola Superior de Agricultura “Luiz de Queiroz”(ESALQ/USP, 2018),cassava starch was quoted ashaving a price of around US\$ 640 a ton (approximately 41 cents by kilogram), in the second half of 2018. With regard to CDs, the prices for 1 kg of the α -, β - and γ -CDs, according to the Shandong Binzhou Zhiyuan Biotechnology Co., Ltd. (China), were US\$73, US\$9 and US\$ 260, respectively. Thus, the value of β -CD is approximately 22 times greater than that of its source substrate.

Due to the great demand for CDs and their various applications, considerable research has been carried out to increase their production. The aim of the present study was to describe an economical model for the production of CDs by using an ultrafiltration system to remove the inhibitory factors formed in the reaction medium, as well as the use of repetitive batches to enable reuse of the commercial CGTase. In addition, the influence of ethanol on the reaction medium was evaluated, the kinetic parameters of the commercial enzyme (Toruzyme[®] 3.0L) were defined, and the produced β -CD was crystallized and its yield determined.

MATERIALS AND METHODS

Materials

The α -, β - and γ -CD standards were purchased from Sigma Aldrich (St. Louis, MO, USA). The substrates used were cassava starch (Polvilho Doce, Alimentos Zaeli LTDA, Brazil), corn starch (Cornna, Unilever Company LTDA, Brazil) and maltodextrin (Sigma Aldrich LTDA, Brazil). The 3.0L Toruzyme[®]enzyme was supplied by Novozymes (Bento Gonçalves, Rio Grande do Sul, Brazil). Other chemical reagents were of analytical grade.

Determination of best enzyme concentration and quantification of CGTase protein

The best enzyme concentration was determined using the initial velocity method (Dixon, Webb, 1979). The protein concentration of the enzyme was analyzed according to the Bradford method (Bradford, 1976). The reaction medium containing 15% (w/V) maltodextrin diluted in 10% (V/V) of 10 mM sodium citrate buffer pH 6.0 was prepared and placed in a 50 mL jacketed glass reactor and coupled in a bath thermostated at 65 °C under

constant magnetic stirring. The enzyme concentration was tested at 0.1% (V/V) and 0.02% (V/V), relative to the volume of reaction medium (50 mL), and 1 mL of the medium was collected at 5 min intervals, inactivated with 1 mL of 0.02 N HCl and placed in a boiling bath for 5 min. The reaction lasted 30 min. The temperature, ethanol concentration and sodium citrate buffer used were defined according to the Calsavara *et al.* (2011) methodology. The best dilution was chosen based on the coefficient of determination (R^2) of the concentration of β -CD produced graph versus time, with this coefficient indicating to what extent the model explains the observed values. A higher R^2 value represents a more explanatory model which better fits the sample. The assays were performed in triplicate.

Determination of best substrate for CD production

The influence of the type of substrate was determined in relation to enzymatic activity, with one unit of activity (U) corresponding to the amount of CGTase that produces 1 μ mol of CD/min under the reaction conditions. The substrates used were corn starch, cassava starch and maltodextrin at concentrations of 5, 10 and 15% (w/V) diluted in 10% (V/V) of 10 mM sodium citrate buffer pH 6.0 and 0.02% of enzyme in 50 mL of reaction medium, at room temperature, all in the presence and absence of 10% (V/V) ethanol.

The reaction medium was placed in a jacketed glass reactor coupled to a thermostated bath at 65 °C under constant magnetic stirring. The enzyme was added by initiating the reaction and then 1 mL of the medium was collected, inactivated with 1 mL of 0.02 N HCl in a centrifuge tube and boiled for 5 min. A volume of 2 mL of distilled water was then added and centrifuged at 8,000 x g at 40 °C for 20 min. The supernatant was separated for spectrophotometric analysis by the phenolphthalein method. The other samples were collected at 0, 5, 10, 15, 20, 25, 30 and 60 min and the inactivation procedure described above was performed. The assays were performed in triplicate.

The activity calculation was performed according to equation 1 (Moriwaki *et al.*, 2009).

$$A = \frac{K' \times V_R \times D}{V_E} \quad (\text{eq. 1})$$

Where:

K' = slope of the concentration line of CDs as a function of time (min x mmol/L)

V_R = total volume of reaction (substrate volume + enzyme volume)

D = enzyme dilution

V_E = volume of diluted enzyme

Determination of substrate concentration, presence or absence of 10% ethanol (V/V) and duration of each batch for the production of the CDs

The reaction medium containing 10% and 15% (w/V) cassava starch in the presence and absence of 10% (V/V) ethanol and 0.02% of enzyme in 50 mL of reaction medium was used as a substrate for the production of CDs. A volume of 1 mL of the reaction medium was collected at 1, 6, 12, 24, 48, 72, 84, 120 and 132 h and immediately inactivated as described above. The tubes were centrifuged at 12,000 x g, at 40 °C for 10 min. The supernatants were separated and analyzed by the phenolphthalein and chromatographic methods. The assays were performed in triplicate.

Determination of kinetic parameters of CGTase

Activation Energy

To determine the influence of temperature on the initial rate of β -CD production, temperatures between 40 and 90 °C were selected. The experiments were performed using 10% (w/V) cassava starch dissolved in 10% (V/V) of 10 mM sodium citrate buffer pH 6.0 as the substrate; and 10% (V/V) ethanol at temperatures of 40, 50, 60, 70, 80, 90 and 95 °C. The collected samples were centrifuged at 12,000 x g, at 40 °C for 10 min, and the supernatants were analyzed by the spectrophotometric method (Tardioli, Zanin, Moraes, 2006). The assays were performed in triplicate.

The Arrhenius equation described by por Moriwaki *et al.* (2007) allowed the activation energy of the enzyme to be determined.

Inactivation energy and half-life time

For this test, two thermostated baths were used, each coupled to a jacketed glass reactor (R1 and R2). One bath, to which the R1 reactor containing 50 mL of the reaction medium (10% cassava starch and 10% ethanol) and 500 μ l of pure enzyme was coupled, was used to submit the enzyme to the different test temperatures (70, 75, 80, 85 and 90 °C). Aliquots of 1 mL were collected after

0, 40, 80, 120, 160, 200 and 240 min of permanence in the reactor and transferred to the R2 reactor, which was coupled to another bath, and maintained at 65 °C with 10% cassava starch and 10% ethanol. For the times in R1, the aliquots were tested in a new reaction medium in R2, and remained for 30 min. At 5 min intervals 1 mL aliquots of R2 were drawn into centrifuge tubes containing 1 mL of 0.02 N HCl and placed in the boiling bath for 5 min for inactivation of the enzyme. The samples were then cooled and 2 mL of distilled water was added and centrifuged at 12,000 x g at 40 °C for 10 min. The supernatants were separated and analyzed by the spectrophotometric method (Tardioli, Zanin, Moraes, 2006).

The effect of temperature on CGTase stability is determined by the thermal denaturation of the enzyme, in which the reaction rate begins to decrease. It is determined by the coefficient of thermal inactivation (Kd) given by the Arrhenius equation described by Matioli *et al.* (2001).

The half-life of the enzyme ($t_{1/2}$) corresponds to the time in which the enzyme loses half its activity. It is related to enzymatic stability and is inversely proportional to the Kd value. The assays were performed in triplicate.

Influence on variation of substrate concentration

Inhibition of enzyme activity is influenced by the initial concentration of the substrate. The experiment was conducted under previously determined optimized conditions, but with cassava starch at concentrations of 0.05; 0.1; 0.25; 0.5; 0.75; 1; 1.5, 2.5; 5; 7.5; 10 and 17.5% (w/V), in the presence of 10% (V/V) ethanol. The samples were centrifuged at 12,000 x g at 40 °C for 10 min. The separated supernatants were analyzed by the spectrophotometric method. The assays were performed in triplicate. The calculation was determined by the Michaelis-Menten equation following the Haldane kinetic model (Segel, 1975), expressed in mol/L.

Determination of the starch conversion rate in CGTase products

A preliminary batch test followed by ultrafiltration was performed to determine the rate of conversion of the starch by the enzyme. The substrate used was 10% (w/V) cassava starch dissolved in 10% (V/V) 10 mM sodium citrate buffer pH 6.0 and 10% (V/V) ethanol. The medium was transferred to a jacketed glass reactor

with 50 mL capacity, coupled to a thermostated bath at 65 °C, and to a condenser to prevent the loss of ethanol. The magnetic agitation was constant for 72 h. After this time, 1 mL of the medium was collected for the determination of the CDs produced. The remaining medium was transferred to the Amicon® ultrafiltration device, consisting of a 10 kDa, 44.5 mm diameter membrane. Ultrafiltration occurred under nitrogen gas pressure at 300 kPa and constant agitation. The α -, β - and γ -CDs, which have a molar mass of 972 Da, 1135 Da and 1297 Da, respectively, were filtered during the process, whereas the CGTase with an estimated molar mass of 59 to 110 kDa was retained (Ibrahim *et al.*, 2012).

The ultrafiltrate and the retained medium, together with the sample collected at the end of 72 h, were analyzed spectrophotometrically for the production of β -CD, and with the retained medium the total sugars were determined by the sulfuric phenol method (Dubois *et al.*, 1956), which defined the starch conversion rate. The assay was performed in triplicate.

Repetitive batching with 10 kDa membrane ultrafiltration

The repetitive batch process was initiated following the methodology described above for the starch conversion rate. The medium retained in the device was resuspended in cassava starch solution (1.75 g/40 mL) calculated by the conversion rate and 5 mL of ethanol. At each cycle the ultrafiltrate was collected and stored at 4 °C for further spectrophotometric and chromatographic analyzes. The cycles were repeated until a constant concentration of the formed CDs was observed. The assays were performed in triplicate.

Crystallization of the β -CD formed in the repetitive batch

The β -CD produced was purified by crystallization, following the methodology described by Moriwaki *et al.* (2014). After crystallization, the supernatant was subjected to lyophilization at -50 °C for 48 h and the precipitate was dried in an oven at 60 °C for 36 h and 80 °C for 12 h. The powders from the crystallization and lyophilization were crushed in a mortar and placed in an oven at 65 °C until a constant weight was obtained, resuspended and analyzed by chromatography.

To determine the water content of the crystallized β -CD the Karl Fischer automatic titrator was used in

accordance with the methodology of the Farmacopéia Brasileira (Brazilian Pharmacopoeia) (ANVISA, 2010).

Separation of CDs by 1 kDa membrane ultrafiltration, crystallization and recrystallization

A new CD production assay was performed to pre-separate α -CD from the other CDs using 1 kDa membrane ultrafiltration prior to the crystallization step. In the same assay the effectiveness of the recrystallization of the obtained samples was evaluated. Thus, the entire volume obtained from ultrafiltration in the 10 kDa membrane was again subjected to the ultrafiltration process, but with a 1 kDa membrane. The ultrafiltered contents were lyophilized and the contents retained in the device were subjected to crystallization. Recrystallization, in turn, was performed by resuspension of samples from the crystallization and lyophilization process. Dilution was calculated according to the solubility of β -CD. The samples were analyzed by high performance liquid chromatography (HPLC).

Analytical methods

The protein concentration of CGTase was analyzed according to the Bradford methodology (Bradford, 1976).

In accordance with the Complexity Theory (Tardioli, Zanin, Moraes, 2006), β -CD (mM) concentration was measured by discoloration of a phenolphthalein solution analyzed by a spectrophotometer at 550 nm, which occurs after complexation with β -CD. The methodology applied is described by Moriwaki *et al.* (2009).

To determine the concentration of α -, β - and γ -CD, the High Performance Liquid Chromatography (HPLC) method was used, according to Fenelon *et al.* (2015), but with a water and acetonitrile ratio of 45:55 and flow at 0.6 mL/min. The CD concentrations in the samples were calculated based on the ratio between the mean of the sample area and the mean of the area of each standard. One enzyme activity unit (U) corresponds to the amount of CGTase that produces 1 μ mol of CD/min under the reaction conditions.

Statistical Analysis

The results of CD production were calculated by analysis of variance (ANOVA) and the means were compared by the Tukey test with a significance level of 5%.

RESULTS AND DISCUSSION

Influence of enzyme concentration on initial reaction rate and CGTase protein determination

In order to verify the influence of commercial CGTase concentration on CD production, the initial velocity methodology was applied and the enzyme was evaluated at dilutions of 0.1% (V/V) and 0.02% (V/V). It was observed that the concentration of β -CD as a function of the reaction time in minutes resulted in good correlation between the points. The lines relating to the dilutions of the 0.1% and 0.02% (V/V) enzyme was adjusted by linear regression between the β -CD concentration and the reaction time and enabled the determination of enzymatic activity, resulting in 372 and 556 U/mL and specific activity of 113 and 170 U/mg, respectively. The determination coefficients of the curves were very similar for both enzyme concentrations. The concentration of the enzyme 0.1% (V/V) did not make the yield proportional to the concentration of 0.02% (V/V), as the use of a five times greater volume of enzyme did not result in a fivefold increase in CDs. Therefore, the best dilution used in the assays of the present study was 0.02% (V/V). This result is significant, as due to its high cost a reduction in enzyme volume may be advantageous. The Toruzyme[®] enzyme is currently sold in a minimum quantity of 25 kg for US\$ 2,282.57.

When Calsavara *et al.* (2011) used the same enzyme at concentrations of 0.05; 0.1% and 0.2% (V/V), with 15% (w/V) corn starch as substrate and 15% (V/V) ethanol in the reaction medium, the best results were obtained at 0.1% (V/V) of enzyme, whereas lower concentration were unfavorable as they did not reduce the viscosity of the medium.

Determination of the best substrate in the presence and absence of 10% ethanol (V/V)

Among the substrates and concentrations tested, cassava starch provided better results than corn starch and maltodextrin, as observed in Figure 1. In terms of the percentage of substrate used, the concentrations of 10 and 15% stood out. A proportion of 10% (w/V) cassava starch in both the presence and absence of ethanol resulted in enzymatic activity of 264 and 308 U/mL, and specific activity of 80.7 and 94.2 U/mg, respectively. When cassava starch was used at 15% (w/V), in the presence and

absence of ethanol, it resulted in an enzymatic activity of 248 and 304 U/mL and a specific activity of 75.8 and 93.0 U/mg, respectively. Therefore, no statistically significant difference in β -CD production was observed when using these two substrate concentrations.

Cassava starch, which as described above has the highest amount of amylopectin, was the most effective substrate at the concentrations tested, which may be due to differences in the structure of the starch granules and the properties of CGTase, resulting from various microorganisms. Grüll and Stifter (2001) recommended high amylopectin starches, explaining that these are more stable than amylose as the reaction with CGTase starts at the non-reducing end of the starch molecule. Amylopectin has more non-reducing end points than amylose, resulting in greater conversion to CGTase products.

As shown in Figure 1, for all substrates and concentrations tested, the presence of ethanol

negatively influenced β -CD production during 60 min of reaction. This fact can be interpreted as a result of the short period of reaction. Initially, the interaction of ethanol with CGTase may be detrimental due to conformational changes, for example (Mattsson *et al.*, 1991). However, in longer periods, when the equilibrium of the reaction is reached, ethanol's ability to avoid hydrolytic reactions that lead to the breakdown of CD molecules, causes the initial detriment to be overcome, increasing B-CD yield.

A 132h reaction test was therefore performed, and the conditions chosen for the production of CDs were 10 and 15% (V/V) cassava starch in the presence and absence of ethanol. It is worth mentioning that Mattsson *et al.* (1991) reported that the effect of ethanol is more pronounced for higher starch concentrations; however, for concentrations of ethanol above 20% an abrupt decrease in CD yield was found, possibly due to the inhibition of the enzyme.

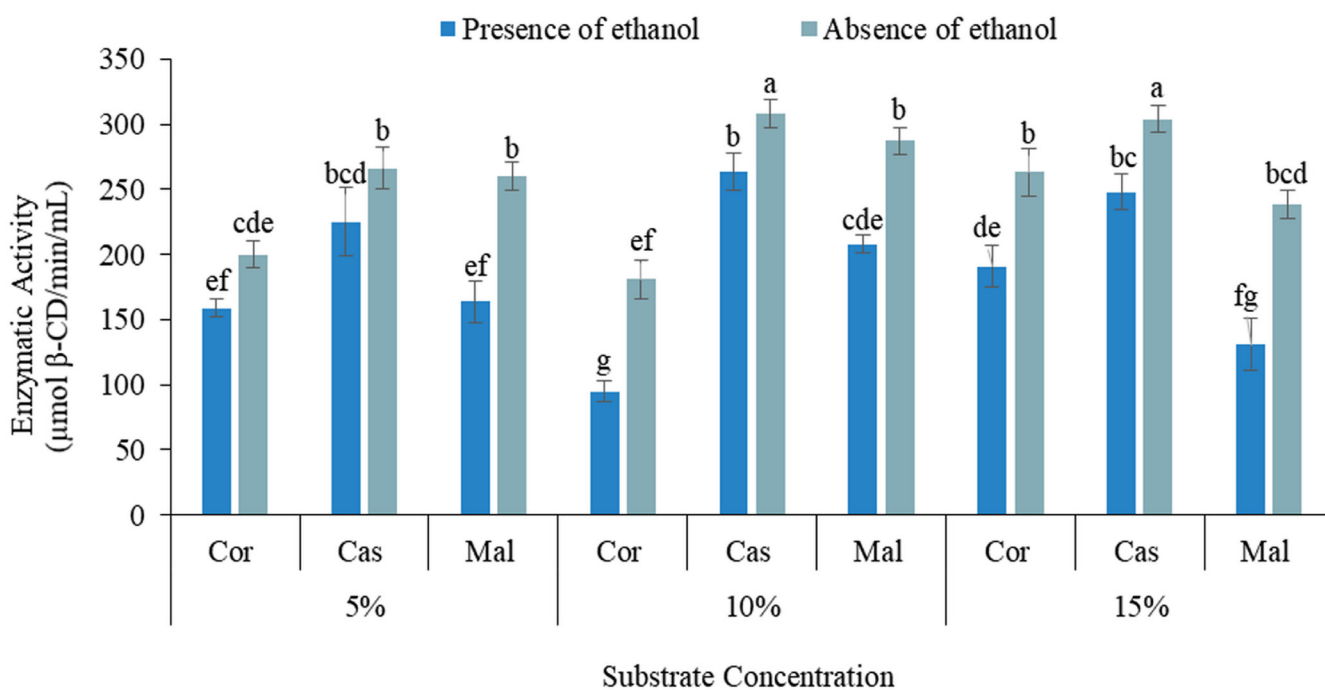


FIGURE 1 - Determination of most effective substrate and the influence of ethanol on β -CD production using corn starch (Cor), cassava starch (Cas) and maltodextrin (Mal) at concentrations of 5, 10 and 15% (w/V) in 10% (V/V) 10 mM sodium citrate buffer pH 6.0, in the presence and absence of 10% ethanol (V/V) and 0.02% enzyme (V/V). The reaction lasted 60 min at 65 °C. Spectrophotometric data were obtained for the β -CD dosages by the phenolphthalein method.

Determination of substrate concentration, the presence or absence of ethanol, and the duration of the production cycle of the CDs

To determine the best substrate concentration, a 132 h cassava starch assay with and without the presence of ethanol was performed (Figure 2). Cassava starch at 10 and 15% (w/v) in the presence of 10% ethanol (V/V) resulted in a yield of 32.12 mg/mL and 42.24 mg/mL of β -CD, respectively.

This assay determined the concentration of the substrate, which proved to be more viable when using 10% (w/V) cassava starch in the presence of ethanol, as the addition of 50% of the substrate provided only a 24% increase of β -CD. Therefore, the substrate concentration chosen for the repetitive batch process and ultrafiltration was 10% (w/V) cassava starch in the presence of 10% (V/V) ethanol.

Figure 3 shows the results of the production of CDs at 132 h determined by chromatography with 10% (w/V) cassava starch in the presence of 10% (V/V) ethanol. Maximum β -CD production was reached at 120 h, as occurred in spectrophotometric analysis by the phenolphthalein method (Figure 2).

The time set for each repetitive batch was 72 h as at this time the production of β -CD achieved a yield of 87.4% in relation to the maximum production of this CD, which occurred in 120 h. From 72 h onwards, increments of 12 h of production led to relatively insignificant increases in the production of β -CD of 4.0; 5.3; 1.5 and 1.8%, at 84, 96, 108 and 120 h, respectively. It was also observed that at 72 h the ratio of α , β and γ -CD formed was 1: 1: 0.08 g, respectively, and that from this time onwards a stabilization of α -CD production occurred along with an increase in β -CD production. Therefore, the total of CDs formed in this period was 96.9%, in relation to the maximum concentration of total CDs, reached in 108 h, of which 45.6% was α -CD, 47.2% β -CD and 4.1% γ -CD. The specific activity of the enzyme in the production of α , β and γ -CD resulted in 106.6; 39.6 and 26.9 U/mg, respectively. Considering that the use of 10 μ l of enzyme in 50 mL of reaction medium provided a concentration of 47 mg/mL of CDs at the end of 132 h, it was concluded that under these conditions the total yield of CDs was 234,4 g of the CDs per mL of enzyme.

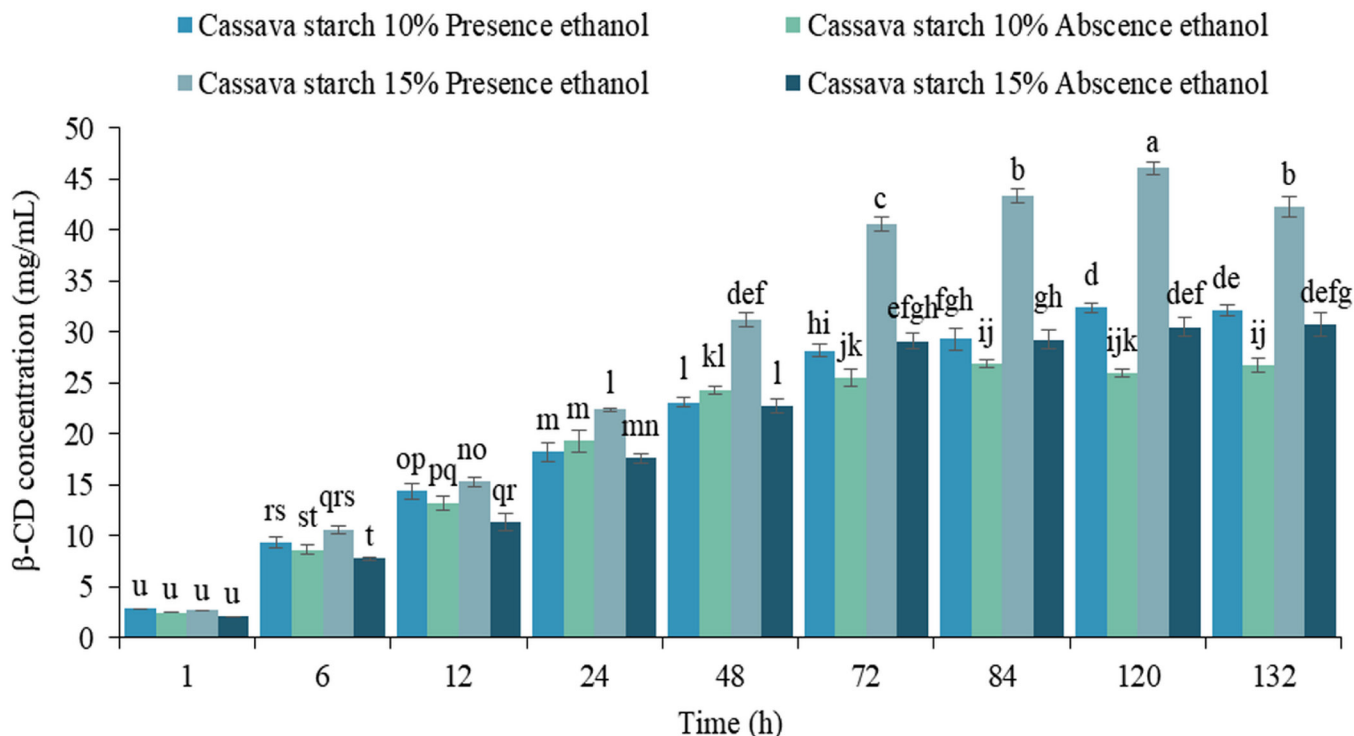


FIGURE 2 - β -CD production using 10 and 15% cassava starch (w/V) in the presence and absence of 10% ethanol (V/V) for 132 h. Spectrophotometric analysis using the phenolphthalein method.

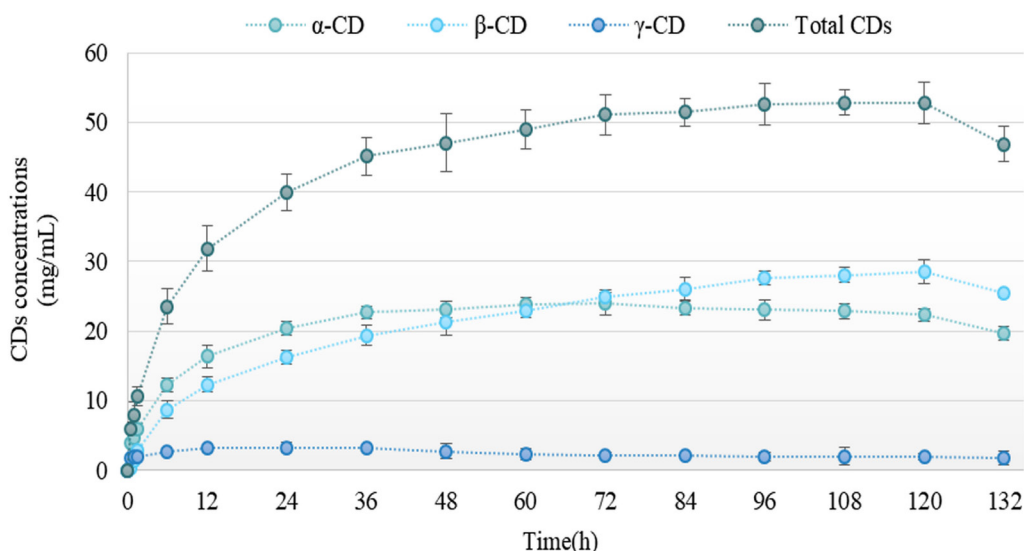


FIGURE 3 - Production of cyclodextrins over 132 h at 65 °C using 10% (w/V) cassava starch and 10% (V/V) ethanol as determined by chromatography.

Calsavara *et al.* (2011) found that 15% (w/V) corn starch, in the presence of 10% (V/V) ethanol, 0.1% (V/V) Toruzyme® enzyme in 100 mL of reaction medium and a reaction time of 12 h obtained 37% of the total CDs formed, of which 52.2% were α-CD, 38.8% β-CD and 9.0% γ-CD. The specific activity of the enzyme when producing α, β and γ-CD resulted in 37.25; 19.61 and 8.63 U/mg, respectively. The total yield of CDs per milliliter of enzyme was 55 g.

Kinetic parameters

Effect of temperature on enzymatic activity

The maximum enzyme activity of 166 U/mL was reached at 70 °C. At temperatures above 70 °C the activity of the enzyme remained practically constant (Figure 4a). This result is important, as high temperatures avoid microbial contaminations, and thermostable enzymes are of great industrial interest for various biotechnological applications. Moreover, higher temperatures favor the solubility of substrates and products, the reduction of viscosity and an increased diffusion coefficient of the substrates (Gomes *et al.*, 2007).

The effect of the temperature on enzymatic activity was calculated by the Arrhenius equation, through adjustment to the experimental data. This adjustment allowed the determination of the activation energy

(E_a) which was 18.85 kcal/mol for the production of β-CD. Muria, Cheirsilp, Kitcha (2011) used CGTase from the *Bacillus* sp strain 26, sago starch as substrate, and temperatures from 45 to 70 °C, and obtained an E_a of 5,152 kcal/mol. Abdel-Naby, Fouada, Reyadb (2015) found that the optimum CGTase temperature of *Bacillus amyloliquefaciens* was 58 °C and the E_a was 3.92 kcal/mol. Other authors used CGTase of *Thermoanaerobacter* sp and obtained an optimum reaction temperature of 100 °C (Matte *et al.*, 2012; Zhou *et al.*, 2010). Unsworth, Oost, Koutsopoulos (2007) achieved optimum reaction temperatures above 100 °C using other thermophilic enzymes.

With regard to thermal stability, the lowest thermal inactivation was found at a temperature of 70 °C, and therefore longer reaction periods can be used at this temperature. When this temperature was compared with temperatures of 75, 80, 85 and 90 °C, a decrease in activity of 7, 78, 85 and 94%, respectively (Figure 4b), was observed. An abrupt drop in activity was noted at temperatures of 75 to 80 °C, meaning that the enzyme initiated the process of denaturation caused by temperature. While an increase in temperature increases the chemical reactions between enzyme and substrate, however, denaturation of the enzyme and, consequently, the interruption of the catalytic reaction, occurs if the temperature is too high (Rakmai, Cheirsilp, Prasertsan, 2015). Norman and Jorgensen (1992) reported that

CGTase of *Thermoanaerobacter* are extremely thermostable and can reach an optimal temperature of 90 to 95 °C at pH 6.0.

The thermal inactivation energy was determined from the values of the thermal inactivation coefficient (Kd), according to the Arrhenius equation, resulting in 19.30 kcal/mol. At temperatures of 80, 85 and 90 °C, the half-life was approximately 171, 111 and 80 min, respectively. Moriwaki *et al.* (2007) used CGTase of the *Bacillus firmus*

strain 7B, 10% (w/v) maltodextrin as substrate and pH 8 at temperatures of 35 to 85 °C and obtained an E_d of 37.8 kcal/mol. The half-life time was over 20 h for temperatures lower than 60°C and reduced to 30 min at 80°C.

According to the results obtained, the thermal stability of the enzyme under study was considered satisfactory, taking into account the resistance of the enzyme, which is advantageous for the industrial production of CDs.

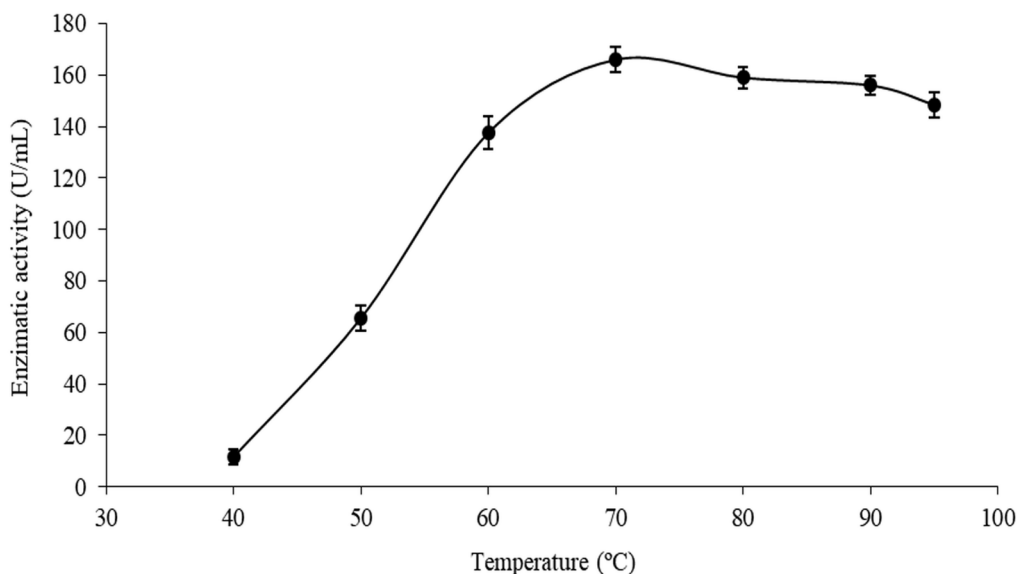


FIGURE 4A - Enzymatic activity in the production of β -CD as a function of temperatures of 40 to 95 °C using 10% (w/ V) cassava starch in the presence of 10% (V/V) ethanol.

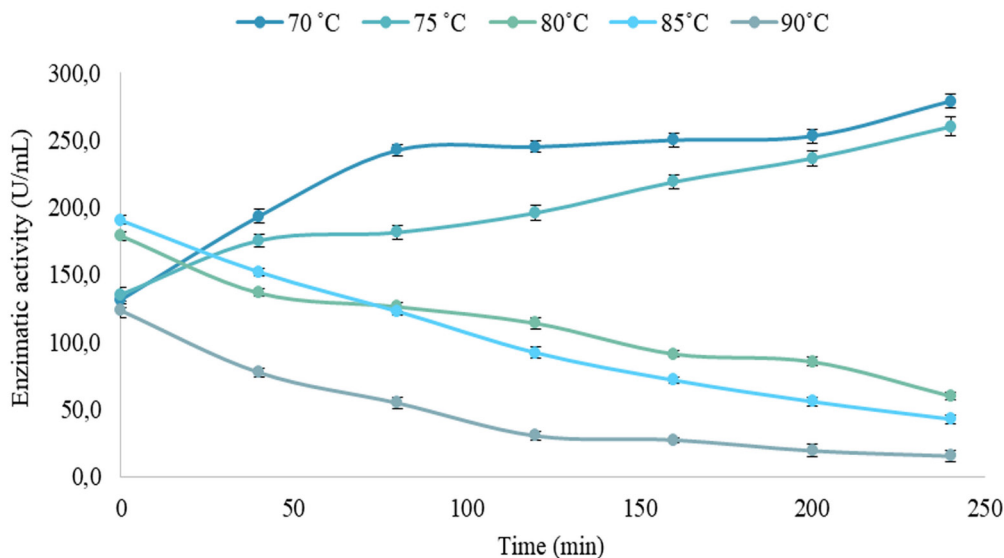


FIGURE 4B - Thermal stability in the production of β -CD at temperatures of 70 to 90 °C. Conditions: 10% (w/V) cassava starch and 0.02% (V/V) enzyme.

Influence of substrate concentration on CGTase activity

Figure 5 shows the initial reaction rate (V) as a function of substrate concentration at 65 °C. Inhibition by the substrate was identified by the increase in the rate of β -CD production with increasing substrate concentration up to 0.0005 mol/L, although this effectively stabilized with higher substrate concentration values. The Michaelis-Menten constant (K_m) obtained for the cassava starch substrate under optimum conditions was 0.0011 mol/L and the maximum velocity (V_{max}) was 26.05 mol of β -CD/L/h. Low K_m values are related to higher substrate affinity. There is no absolute V_{max} value for each enzyme, with the level depending on the amount of enzyme used (Pinheiro *et al.*, 2017).

Matte *et al.* (2012) used soluble starch and Toruzyme[®] and obtained 0.024 mol/L of K_m and 10.02 mol/L/h of V_{max} . Bonilha *et al.* (2006) obtained K_m values of 0.00156 mol/L and V_{max} 19.87 mol/L/h of protein, with potato starch as a substrate and CGTase of *B. licheniformis*, of which the CGTase used in this experiment was genetically modified with this species of bacteria.

The K_m value found for the enzyme studied was therefore considered satisfactory, or in other words, the enzyme had a high affinity for the cassava starch substrate.

Determination of the starch conversion rate in CGTase products

The CDs production process can be negatively influenced by some factors, such as a low yield which does not normally exceed 25% of substrate conversion in CDs (Pishtiyski, Zhekova, 2006). The increase in substrate concentration causes an increase in the volumetric productivity of the reactor as it increases β -CD concentration but also reduces the conversion of the starch to CDs. The low yield at high starch concentrations is due to the inhibition of the enzyme by the formation of CDs. Removal of the CDs by ultrafiltration increases yield (Fenelon *et al.*, 2015). This assay was therefore carried out to promote a higher starch to CDs conversion rate through optimum reaction conditions, with a batch of 72 h followed by ultrafiltration.

The total amount of cassava starch present in the 50 mL reaction medium was 5 g, of which 1.75 g were converted to linear CDs and oligosaccharides, which were separated by 10 kDa membrane ultrafiltration. This represented a starch conversion rate of 35%. The amount of starch remaining in the ultrafiltration process was obtained by determining the total sugars by the sulfuric phenol method, and corresponded to 3.25 g.

Kim *et al.* (1997) produced CDs using Toruzyme[®] enzyme and 7.5% (w/V) corn starch, 65 °C, pH 6 and 22 U/g of enzyme for 24 h. The conversion of the

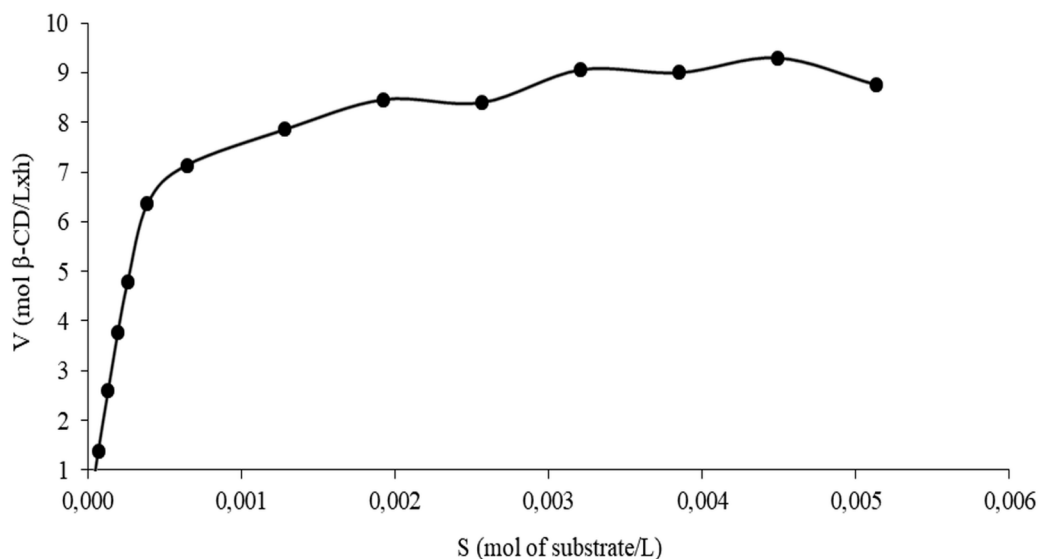


FIGURE 5 - Initial velocity of β -CD production by CGTase as a function of substrate concentration (S) with cassava starch, 10% (V/V) ethanol at 65 °C.

substrate to CDs was 27.9%. Fenelon *et al.* (2015) using 5% (w/V) corn starch with 10% (V/V) ethanol and 4% (V/V) semi-purified enzyme of *Bacillus firmus* strain 37 in a 12 height batch process followed by ultrafiltration, obtained a starch to CDs conversion rate of 26%.

Repetitive batching and ultrafiltration

The purification of CDs often requires the use of organic solvents which can cause environmental hazards, toxicity, flammability and other disadvantages, limiting their use in the food and pharmaceutical industries (Caiming *et al.*, 2016; Moriwaki *et al.*, 2014). Ultrafiltration was used in this research, constituting, besides a tool that allows the reuse of the enzyme, a previous form of CDs separation that facilitates its further purification.

Figure 6 shows the eight repetitive batches with periods of 72 h, followed by ultrafiltration. In the first batch there was a maximum production of α -, β - and γ -CD of 24.75 mmol L⁻¹, 20.59 mmol L⁻¹ and 1.66 mmol L⁻¹, respectively. The last batch exhibited 13.51 mmol L⁻¹ of α -CD and 7.96 mmol L⁻¹ of β -CD. With the exception of the first batch, no γ -CD production was detected throughout the experiment.

From the first to the second batch there was a reduction of 38 and 50% of the production of the α -CDs

and β -CDs, respectively. From the second to the third batch there was a reduction of approximately 8% in both α -CD and β -CD, although from this point onwards production remained constant (means of 13.37 mmol L⁻¹ of α -CD and 7.92 mmol L⁻¹ of β -CD) until the last batch. In the last batch, 59% of the total CDs produced were α -CD and 41% were β -CD. No difficulty was observed in flow during ultrafiltration, with elimination of most of the inhibitory products produced by CGTase, and recovery of the enzyme and substrate which were not converted by the enzyme also possible. The enzyme in this experiment also converted 35% starch, calculated by the starch conversion rate using the sulfuric phenol method.

Calsavara *et al.* (2011) performed a 12 h reaction batch using 15% (w/V) of corn starch, 0.1% (V/V) of Toruzyme[®] enzyme and pH 6 at 65 °C, and obtained 32.92 mmol L⁻¹ of α -CD; 21.96 mmol L⁻¹ of β -CD and 3.98 mmol L⁻¹ of γ -CD. Fenelon *et al.* (2015) obtained, with eight batches of 12 h, 9.12mmol L⁻¹ in the first batch and 7.92 mmol L⁻¹ of β -CD in the last batch, with semi-purified enzyme of *Bacillus fasmus* strain 37, 5% (w/V) of corn starch and 10% (V/V) ethanol. Other authors that used the ultrafiltration system to separate the CDs also obtained promising results, producing CDs in repetitive or continuous batches (Schöffner *et al.*, 2013; Sakinah *et al.*, 2014; Rakmai, Cheirsilp, 2016; Fenelon *et al.*, 2018).

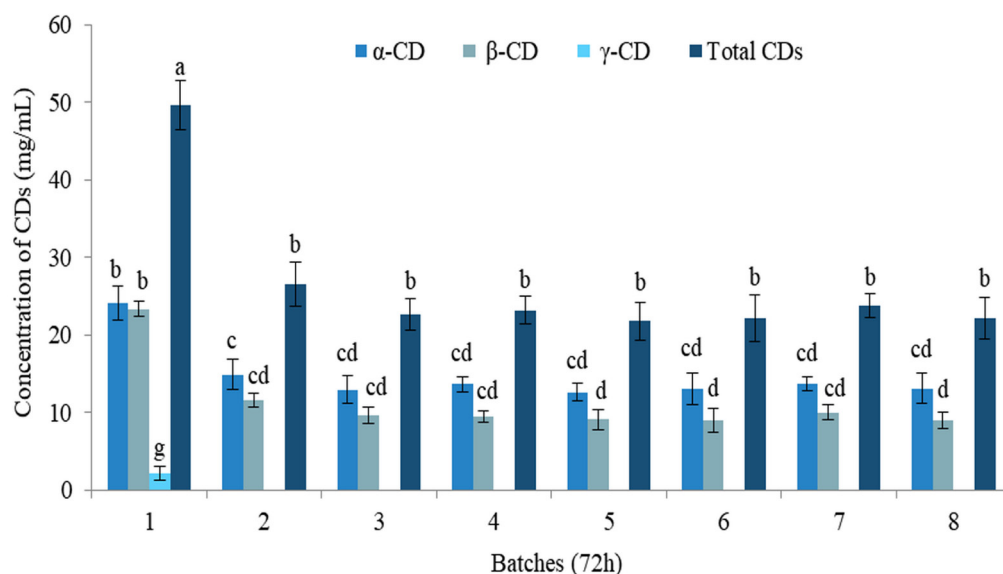


FIGURE 6 - Production of cyclodextrins in repetitive batches and ultrafiltration using 10% cassava starch with 10% ethanol and commercial enzyme 0.02% (V/V). Chromatographic analysis.

Although the production of α -CD was reduced by half in the third batch and the production of β -CD by the same rate in the second batch, after completing all the batches it was found that the enzyme was highly resistant to denaturation, as it maintained the same activity for another six batch repetitions of 72 h.

Crystallization and purification of β -CD

Ultrafiltered samples were obtained from each cycle after eight consecutive cycles of 72 h followed by ultrafiltration. These samples were pooled and subjected to the crystallization process. A quantity of 2.1 g of precipitate was obtained from crystallization, which was resuspended and analyzed by chromatography, reaching 67.6% purity of β -CD, or 1.42 g of moisture-free β -CD. The purity of β -CD may have been affected by the presence of other oligosaccharides of low molar mass which passed through the ultrafiltration process, forming a precipitate with the same. The yield and purity of β -CD obtained with repetitive batches followed by ultrafiltration can be considered satisfactory. Moriwaki *et al.* (2014) used the CGTase of *B. firmus* strain 37 and *B. sphaericus* strain 41 immobilized on vegetable sponge and corn starch as a substrate for 72 h, and obtained 64% crystallized β -CD in both strains.

Lyophilization was carried out with the supernatant remaining from the crystallization process. This supernatant, which contained mainly α -CD, resulted in a powder of 11.11 g, free of moisture. The powder was resuspended and analyzed by chromatography, from which approximately 35% of α -CD and 15% of β -CD were obtained.

Separation of CDs by 1 kDa membrane ultrafiltration, crystallization and recrystallization

Of the different molecular weights of the CDs and using a 1 kDa membrane, almost all the α -CD expected in the ultrafiltrate was lyophilized after the first 10 kDa membrane ultrafiltration. Similarly, a high predominance of β -CD together with γ -CD in the membrane-retained contents was expected and was subsequently crystallized. However, it was observed that of the total CDs in the ultrafiltrate, 58% corresponded to α -CD and 42% to β -CD, while the presence of γ -CD was not detected. In the membrane-retained content, 42% of α -CD, 44% of β -CD and 14% of γ -CD were obtained. These results demonstrated the low efficiency

of the 1 kDa membrane for the separation of α - and β -CD, but confirmed its ability to retain the γ -CD in its entirety. The crystallization of the membrane-retained content increased the purity of β -CD from 67.6%, the result described above, to 72%. Recrystallization of the same sample resulted in only a small increase in purity, reaching 74%, which does not justify the recrystallization process used.

CONCLUSION

The production of CDs in repetitive batches using low-concentration thermostable commercial CGTase is of industrial interest due to its economic viability. The ultrafiltration system used allows the continuous production of CDs, removing the inhibitory products from the medium, and enables the reuse of the same enzyme in several consecutive batchings over a prolonged period.

Studies involving the use of cassava starch substrate in the production of CDs are significant as this substrate is easily accessible and inexpensive, allowing the commercial use of CDs at a satisfactory price. Ethanol, as well as helping to increase the production yield of the CDs and prevent microbial contaminations is a non-toxic solvent that can be recovered and reused for other subsequent processes. A simple crystallization process was necessary to obtain a high yield of β -CD with almost 70% purity, and also produced the other CDs.

REFERENCES

Abdel-Naby MA, Fouada A, Reyadb RM. Catalytic and thermodynamic properties of immobilized *Bacillus amyloliquefaciens* cyclodextrin glucosyltransferase on different carriers. *J Mol Catal B: Enzym.* 2015;116:140-147.

ANVISA - Agência Nacional de Vigilância Sanitária. (Brasil). Farmacopéia Brasileira, Brasília, 2010. Available from: file:///C:/Users/Usuário/Documents/Farmacopéia%20Brasileira/Farmacopéia%20Brasileira%205%20ed%20Volume%201.pdf

Bonilha PRM, Menocci V, Goulart AJ, Polizeli MLTM, Monti R. Cyclodextrin glycosyltransferase from *bacillus licheniformis*: optimization of production and its properties. *Braz J Microbiol.* 2006;37(3):317-323.

Bradford M.M. A rapid and sensitive method for the quantitation of microgram quantities of protein utilizing the principle of protein-dye binding. *Anal Biochem.* 1976;72:248-254.

- Caiming L, Qi X, Zhengbiao G, Shuangdi C, Zhaofeng L. Cyclodextrin glycosyltransferase variants experience different modes of product inhibition. *J Mol Catal B: Enzym.* 2016;133:203-210.
- Calsavara LPV, Cunha A RD, Balbino TA, Zanin GM, Moraes FF. Production of Cyclodextrins from Cornstarch Granules in a Sequential Batch Mode and in the Presence of Ethanol. *Appl Biochem Biotechnol.* 2011;165(7-8):1485-1493.
- Centro de estudos avançados em economia aplicada - ESALQ/USP.[citad 2018 Oct26]. Available from:https://www.cepea.esalq.usp.br/br/indicador/mandioca.aspx.
- Dixon M, Webb EC. 3^a ed. *Enzymes.* London; 1979.
- Dubois M, Gilles KA, Hamilton JK, Rebers PA, Smith F. Colorimetric method for determination of sugars and related substances. *Anal Chem.*1956;28(3):350-356.
- Fenelon VC, Aguiar MFA, Miyoshi JH, Martinez CO, Matioli G. Ultrafiltration system for cyclodextrin production in repetitive batches by CGTase from *Bacillus firmus* strain 37. *Bioprocess Biosyst Eng.* 2015;38(7):1291-1301.
- Fenelon VC, Miyoshi JH, Mangolim CS, Noce AS, Koga LN, Matioli G. Different strategies for cyclodextrin production: Ultrafiltration systems, CGTase immobilization and use of a complexing agent. *Carbohydr Polym.* 2018;192:19-27.
- Gomes E, Guez MAU, Martin N, Silva R. Enzimas termoestáveis: fontes, produção e aplicação industrial. *Quim. Nova.* 2007;30(1):136-145.
- Grüll LD, Stifter KU. Process for the production of cyclodextrins. Patent No. 6.235.505 B1.SidZucker Aktiengesellschaft, Mannheim/Ochsenfurt (DE); 2001.
- Han R, Li J, Shin H, Chen RR, Du G, Liu L, Chen J. Recent advances in discovery, heterologous expression, and molecular engineering of cyclodextrin glycosyltransferase for versatile applications. *Biotechnol Adv.* 2014;32(2):415-428.
- Ibrahim ASS, Al-Salamah AA, El- Tayeb MA, El-Badawi YB, Antranikian GA. Novel cyclodextrin glycosyltransferase from alkaliphilic *Amphibacillus* sp. NPST-10: purification and properties. *Int J Mol Sci.* 2012;13(8):10505-10522.
- Kim TJ, Kim BC, Lee HS. Production of cyclodextrins using raw corn starch without a pretreatment. *Enzyme Microb Technol.* 1997;20(7):506-509.
- Kurkov SV, Loftsson T. Cyclodextrins. *Int J Pharm.* 2013;453(1):167-180.
- Matioli G, Zanin G M, Moraes F F. Characterization of cyclodextrin glycosyltransferase from *Bacillus firmus* strain n° 37. *Appl Biochem Biotechnol.* 2001;91-93(1):643-654.
- Matte MR, Benvenuti EV, Schöffner JN, Ayub MAZ, Hertz PF. Characterization of cyclodextrin glycosyltransferase immobilized on silica microspheres via aminopropyl-trimethoxysilane as a “spacer arm”. *J Mol Catal B: Enzym.* 2012;78:51-56.
- Mattsson P, Korpela T, Paavilainen S, Mäkellä M. Enhanced conversion of starch to cyclodextrins in ethanolic solutions by *Bacillus circulans* alkalophilus cyclomaltodextrin glucanotransferase. *Appl Biochem Biotechnol.* 1991;30(1): 17-28.
- Moriwaki C, Costa GL, Pazzetto R, Zanin GM, Moraes FF, Portilho M, Matioli G. Production and characterization of a new cyclodextrin glycosyltransferase from *Bacillus firmus* isolated from Brazilian soil. *Process Biochem.* 2007;42: 1384-1390.
- Moriwaki C, Mangolim CS, Ruiz GB, Morais GR, Baesso ML, Matioli G. Biosynthesis of CGTase by immobilized alkalophilic bacilli and crystallization of beta-cyclodextrin: Effective techniques to investigate cell immobilization and the production of cyclodextrins. *BiochemEng J.* 2014;83: 22-32.
- Moriwaki C, Mazzer C, Pazzetto R, Matioli G. Produção, purificação e aumento da performance de ciclodextrina glicosiltransferases para produção de ciclodextrinas. *Quim Nova.* 2009;32(9):2360-2366.
- Muria SR, Cheirsilp B, Kitcha S. Effect of substrate concentration and temperature on the kinetics and thermal stability of cyclodextrin glycosyltransferase for the production of β -cyclodextrin: Experimental results vs. mathematical model. *Process Biochem.* 2011;46(7):1399-1404.
- Norman BE, Jorgensen ST. *Thermoanaerobacter* sp CGTase: its properties and applications. *Denpun Kagaku.* 1992;39: 101-108.
- Pinheiro K H, Nascimento L B, Fenelon V C, Barão C E, Matioli G, Moraes F F. Mathematical modelling and kinetic study for CD production catalysed by Toruzyme and CGTase from *Bacillus firmus* strain 37. *Bioprocess Biosyst Eng.* 2017;40:1305-1316.
- Pishtyski I, Zhekova B. Effect of different substrates and their preliminary treatment on cyclodextrin production. *World J Microbiol Biotechnol.* 2006;22:109-114.
- Rakmai J, Cheirsilp B, Prasertsan P. Enhanced thermal stability of cyclodextrin glycosyltransferase in alginate-

gelatin mixed gel beads and the application for β -cyclodextrin production. *Biocatal Agric Biotechnol*. 2015;4(4):717-726.

Rakmai J, Cheirsilp B. Continuous production of β -cyclodextrin by cyclodextrin glycosyltransferase immobilized in mixed gel beads: Comparative study in continuous stirred tank reactor and packed bed reactor. *Biochem Eng J*. 2016;105(Part A):107-113.

Sakinah MMA, Ismail AF, Ilias RM, Zularisam AW, Hassan O, Matsuura T. Effect of substrate and enzyme concentration on cyclodextrin production in a hollow fibre membrane reactor system. *Sep Purif Technol*. 2014;124:61-67.

Schöffner JN, Klein MP, Roqdrigues RC, Hertz PF. Continuous production of β -cyclodextrin from starch by highly stable cyclodextrin glycosyltransferase immobilized on chitosan. *Carbohydr Polym*. 2013;98(2):1311-1316.

SEAB - Secretaria de Estado da Agricultura e do Abastecimento.[citad 2018 Oct 26]. Available from: http://www.agricultura.pr.gov.br/arquivos/File/deral/Prognosticos/2018/Mandioca_2017_18.pdf

Segel IH. *Enzyme Kinetics*. A Wiley-Interscience Publication, New York. 1975.

Slomińska L, Szostek A, Grześkowiak A. Studies on enzymatic continuous production of cyclodextrins in an ultrafiltration membrane bioreactor. *Carbohydr Polim*. 2002;50(4):423-428.

Szejtli J. Introduction and general overview of cyclodextrin chemistry. *Chem Rev*. 1998;98(5):1743-1753.

Tardioli PW, Zanin GM, Moraes FF. Characterization of *Thermoanaerobacter cyclomaltodextrin* glucanotransferase immobilized on glyoxil-agarose. *Enzyme Microb Technol*. 2006;39(6):1270-1278.

Tiwari G, Tiwari R, Raia K. Cyclodextrins in delivery systems: Applications. *J Pharm Bioallied Sci*. 2010;2(2):72-79.

Unsworth LD, Oost JV, Koutsopoulos S. Hyperthermophilic enzymes – stability, activity and implementation strategies for high temperature applications. *FEBS J*. 2007;274(16):4044-4056.

Zhou W, Feng B, Huang H, Qin Y, Wang Y, Kang L, Zhao Y, Wang X, Cai Y, Tan D, Ma B. Enzymatic synthesis of α -glucosyl-timosaponin BII catalyzed by the extremely thermophilic enzyme: Toruzyme 3.0L. *Carbohydr Res*. 2010;345(12):1752-1759.

Received for publication on 03rd December 2018

Accepted for publication on 30th April 2019