

# Metrics for Nonlinear Model Updating in Structural Dynamics

**Samuel da Silva**

*Member, ABCM*

sam\_silva13@hotmail.com

State University of the West of Paraná-

UNIOESTE

Centro de Engenharias e Ciências Exatas

Foz do Iguaçu, PR, Brazil.

**Scott Cogan**

scott.cogan@univ-fcomte.fr

**Emmanuel Foltête**

emmanuel.foltete@univ-fcomte.fr

Université de Franche-Comté

Institut FEMTO-ST, Département LMARC

Besançon, France

**Fabrice Buffe**

fabrice.buffe@cnes.fr

Centre National d'Etudes Spatiales -CNES

Centre Spatial de Toulouse

31401 Toulouse, France

*The aim of this paper is to perform a comparative study between different distance measures or metrics for use in nonlinear model updating using vibration test data. Four metrics derived from both frequency and time domain updating approaches are studied, including the harmonic balance method, the constitutive equation error, the restoring force surface and the Karhunen-Loève decomposition. In the first section, a benchmark model with local nonlinear stiffness is defined in order to illustrate each method. Secondly, each nonlinear updating metric is succinctly reviewed. Finally, the relative performances of the different metrics are investigated based on numerical simulations. These results allow us to characterize the applicability and limitations of the different approaches.*

**Keywords:** *nonlinear model updating, harmonic balance, constitutive relation error, restoring force surface, Karhunen-Loève decomposition*

## Introduction

Local methods for linear model updating based on vibration data are well-documented in the literature (Friswell and Mottershead, 1995). In general, the goal is to solve an inverse problem involving objective functions that represent correlations between the experimental and numerical data from a model in which some parameters are unknown. Currently, these functions are computed using either modal quantities, e.g. natural frequencies, modal shapes or frequency response functions (FRF). Unfortunately, if the structure presents any nonlinearity, these procedures often fail. Fundamentally speaking, the principal reason for this failure is that linear modal parameters are functions of relationships based on a unidimensional convolution while nonlinear systems follow multidimensional convolutions.

Nonlinear effects are becoming important in lightweight and flexible modern engineering structures due to the presence of joints, backlash, friction, stiffening nonlinearities, large displacement amplitudes, etc. Thus, if these nonlinear effects are not taken into account, then the linear model updating procedure will not necessarily converge properly, and the resulting model predictions will be erroneous (Kerschen et al., 2006).

The domain of nonlinear structural dynamics is not as mature as its linear counterpart, and this is especially true for model updating methodologies. However, numerous recent works are dedicated to the identification of the local nonlinear parameters of a model based on a variety of frequency and/or time domain methods.

A classical approach is to consider the multidimensional high-order FRFs as linearized FRFs using the first order harmonic balanced (HB) method to obtain a suitable model description in the frequency domain. Meyer and Link (2003) employed the HB method to update nonlinear two-degree-of-freedom elements in a

larger linear finite element model (FEM). Böswald and Link (2004) applied the HB method in a similar way to update nonlinear joint parameters. The main advantage of this method is that it allows us to perform nonlinear updating using FRF residuals. However, the HB method fails when working with complex nonlinearities due to the loss of information caused by the linearization procedure.

Another linear updating approach in the frequency domain that can be adapted for nonlinear updating is the method based on the constitutive relation error (CRE). The CRE is based on a separation between the reliable equations, e.g. the equilibrium equations, and the less reliable equations, e.g. the constitutive relations (Deraemaeker et al., 2002). Puel (2001) investigated an extension of CRE for nonlinear model updating employing the HB method to obtain linear FRFs. In this case, the same weaknesses shown by the HB method were observed. The author concludes that the frequency domain methods are not well-adapted for nonlinear identification.

A more effective frequency domain technique is to consider the concept of high-order FRFs using Volterra series. However the results produced have been limited by the fact that a low-order truncation of the series is in general required (Worden and Manson, 2005). Campello et al. (2004) proposed Laguerre filters to describe a discrete-time Volterra series in order to overcome this limitation and to be able to work with high-order kernels in the model.

Time domain procedures may be more promising than frequency domain methodologies because it is possible to avoid the transformation between domains, a difficult procedure in nonlinear system analysis. Various authors have already investigated this possibility. Schmidt (1994) proposed a methodology to update local nonlinearities, such as Coulomb friction, gaps and local plasticity in a FE model employing conventional modal state observers for the linearized model.

A classical and historical time domain approach with efficient and reliable results is the restoring force surface (RFS) method, described in standard textbooks (Worden and Tomlinson, 2001). Kerschen et al. (2001) illustrated this method using a beam structure with bilinear stiffness. However, since it requires that the modal

mass matrix be known in advance, this approach is difficult to implement in complex structures.

A more efficient time domain methodology is based on the proper orthogonal decomposition (POD) of the covariance matrix constructed from response time histories. The POD is also known as the Karhunen-Loève decomposition or principal component analysis (PCA). These concepts are mainly used in structural dynamics for compressing vector data (Silva et al., 2007). Lenaerts et al. (2001) used the POD of the displacement vector to identify the nonlinear parameters combined with an optimization procedure based on the differences between the experimental and simulated POD. Zhang and Guo (2007) combined the POD with a design of experiments (DOE) in order to update nonlinear material parameters based on strain measurements with uncertainty considerations. The DOE followed the work of Schultze et al. (2001). These examples and numerous others in the literature show that the POD is a suitable and promising indicator for nonlinear model updating. However, the decomposition is essentially a linear tool, and there are some difficulties that must be overcome in the future.

The reader interested in a detailed review of frequency and time domain techniques for nonlinear model updating can consult the work of Kerschen et al. (2006).

The aim of the present paper is to examine, through numerical simulations, some practical aspects and limitations of some frequency and time domain methods for nonlinear model updating. The following approaches are compared: HB method, CRE, RFS and POD. Initially, a benchmark example is defined and used to simulate different levels of local nonlinearities (weak, medium and strong). The residuals adapted for nonlinear behaviors obtained by the various methods are succinctly described. The results are then interpreted and suggestions for improving each method are discussed.

## Nomenclature

$\mathbf{M}$	mass matrix
$\mathbf{K}$	stiffness matrix
$\mathbf{K}_{md}$	modified stiffness matrix
$\mathbf{C}$	proportional damping matrix
$\mathbf{f}_{nl}$	vector of nonlinear force function
$\ddot{\mathbf{x}}$	acceleration vector
$\dot{\mathbf{x}}$	velocity vector
$\mathbf{x}$	displacement vector
$\hat{\mathbf{x}}$	displacement amplitude in steady state
$\mathbf{x}(0)$	initial condition vector of displacement
$\mathbf{F}(t)$	excitation force in the time domain
$\mathbf{F}(\Omega)$	excitation force in the frequency domain
$F$	excitation force amplitude [N]
$m$	lumped mass [kg]
$k_i$	linear spring [N/m]
$c_i$	linear viscous damping [N.s/m]
$k_{nl}$	nonlinear stiffness parameter [N/m <sup>3</sup> ]
$H_{eq}$	equivalent FRF
$H_{ex}$	experimental FRF
$J(k_{nl})$	objective function
$e_{\omega}(\mathbf{U}, \mathbf{V}, \mathbf{W})$	constitutive relation error
$E_{CRE}(k_{nl})$	CRE energy index
$\mathbf{p}$	nonlinear updating parameter
$\mathbf{z}[k]$	time response matrix

## Benchmark Structure Description

The equations of motion for a nonlinear vibrating system can be written by:

$$\mathbf{M}\ddot{\mathbf{x}}(t) + \mathbf{C}\dot{\mathbf{x}}(t) + \mathbf{K}\mathbf{x}(t) + \mathbf{f}_{nl}(\mathbf{x}, \dot{\mathbf{x}}) = \mathbf{F}(t) \quad (1)$$

where the vector  $\mathbf{f}_{nl}(\mathbf{x}, \dot{\mathbf{x}})$  is a nonlinear function of displacements  $\mathbf{x}$  and velocities  $\dot{\mathbf{x}}$ . In this paper the techniques are illustrated using a two DOF example in which the first mass is connected to the ground through a spring with a cubic stiffness  $k_{nl} = 15 \text{ N/m}^3$ , (see Fig. 1). In this case the equations of motion are given by:

$$\begin{aligned} m\ddot{x}_1 + (c_1 + c_2)\dot{x}_1 + (k_1 + k_2)x_1 - c_2\dot{x}_2 - k_2x_2 + k_{nl}x_1^3 &= f(t) \\ m\ddot{x}_2 + (c_2 + c_3)\dot{x}_2 + (k_2 + k_3)x_2 - c_2\dot{x}_1 - k_2x_1 &= 0 \end{aligned}$$

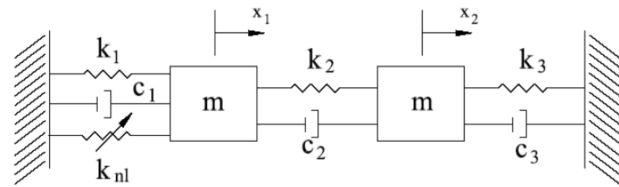


Figure 1. Nonlinear model of the 2 DOF system.

The nonlinear system also has linear springs  $k_1 = 1 \text{ N/m}$ ,  $k_2 = 15 \text{ N/m}$  and  $k_3 = 1 \text{ N/m}$ , linear viscous damping with  $c_1 = c_2 = c_3 = 0.1 \text{ Ns/m}$  and mass  $m = 1 \text{ kg}$ . To obtain the frequency responses one generated 4096 samples with a sampling rate of 100 Hz. The time responses for the time domain procedures were obtained assuming the excitation force  $f(t)$  null, and using different initial displacement vectors. The vectors used are  $\mathbf{x}(0) = [0.5 \ 0.918]^T$  for weak nonlinearities,  $\mathbf{x}(0) = [1.0 \ 0.918]^T$  for medium nonlinearities and  $\mathbf{x}(0) = [2.2 \ 0.918]^T$  for strong nonlinearities. Due to the assumed natures of the nonlinearity, it becomes clear that the larger the magnitudes of the initial displacements, the most important the nonlinear effects will be. The phase plots for these conditions considering  $x_1(t)$  and  $\dot{x}_1(t)$  are shown in Figs. 2 to 4. One can clearly see that the trajectories change as the initial condition vector varies.

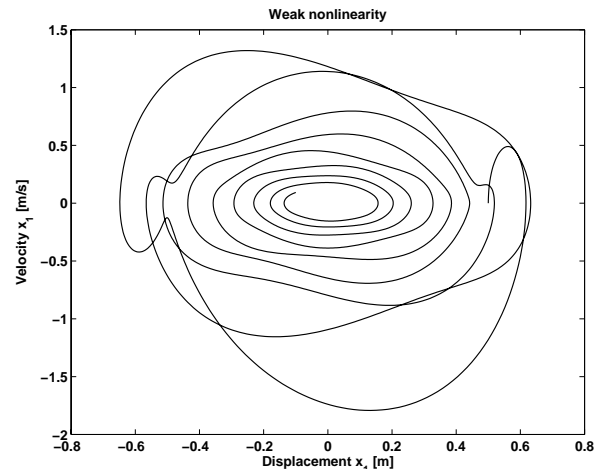


Figure 2. Phase portraits computed for weak nonlinearities.

For the frequency response analysis, sinusoidal excitations are applied in the frequency band from 0 to 2.5 Hz, using four increasing amplitudes, namely  $F = 0.1$ ,  $F = 0.25$ ,  $F = 0.5$  and 1 N. This variation leads to increasing levels of nonlinear behavior. A classical downsampling procedure was performed to obtain a new sampling rate of 5 Hz, in order to improve the resolution near the equivalent linear modes. The frequency information of the two equivalent linear modes is in this range.

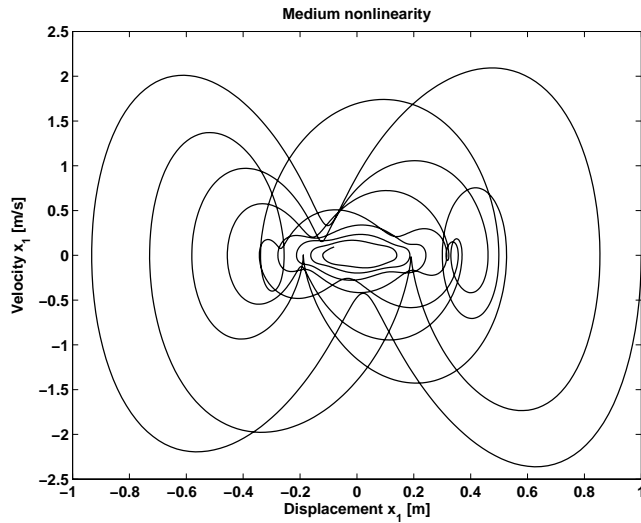


Figure 3. Phase portraits computed for medium nonlinearities.

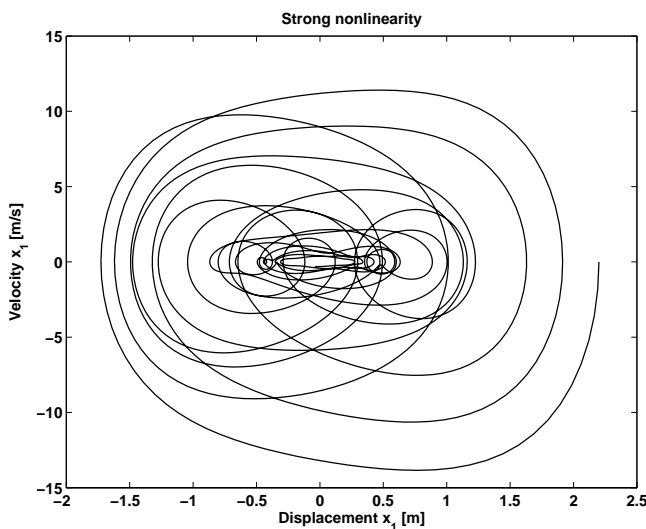


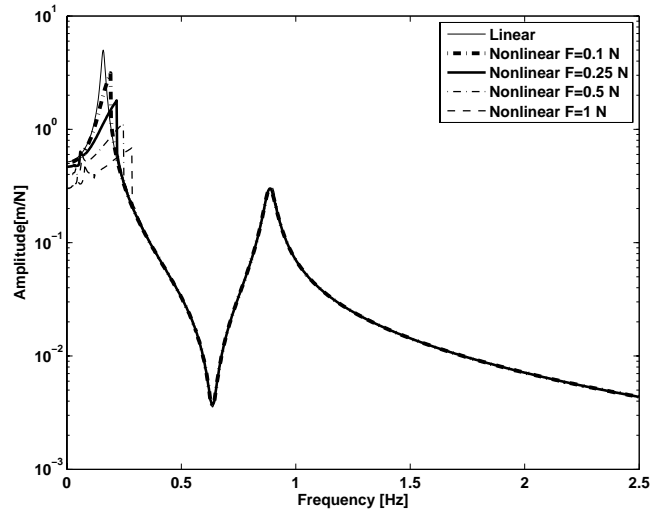
Figure 4. Phase portraits computed for strong nonlinearities.

The plots of the ratio between the amplitudes of  $x_1(t)$  and  $f(t)$  are shown in Fig. 5. As can be seen, the resonance peaks change when the force amplitude is increased, (see Fig. 5b). This is a qualitative index of the presence of nonlinearity that affects mainly the first mode of the equivalent linear model. Several techniques can be used to detect nonlinear behaviors in experimental data, including the coherence functions, the Hilbert transform or the wavelet transform. These methodologies provide qualitative indicators for the presence of nonlinearities. The distortions between

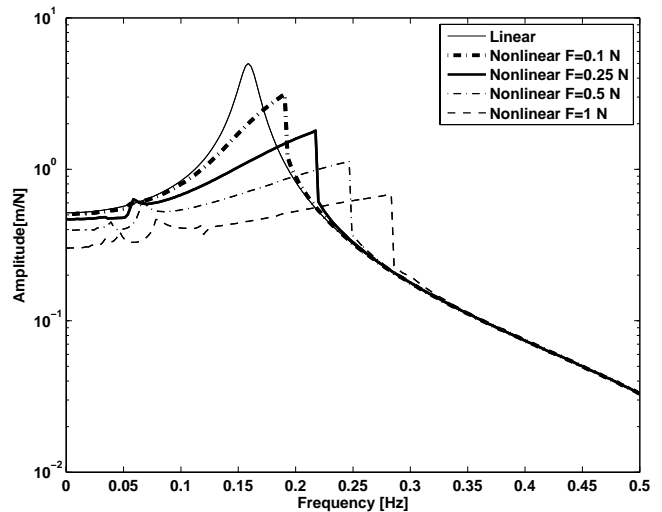
the FRF curves indicate the nonlinear effects. Further details about these approaches can be found in (Worden and Tomlinson, 2001).

### Metrics for Nonlinear Behavior

In this section, the metrics for nonlinear model updating obtained by several methods are reviewed. For the example considered herein, we assume for all the approaches that the nature and location of the nonlinearity are known.



(a) FRF.



(b) Zoom in the first peak.

Figure 5. Nonlinear FRF considering several levels of amplitude excitation.

### Harmonic Balance Method

The harmonic balance method (HB) is a procedure to linearize the FRFs. The transformation to the frequency domain is performed by calculating the equivalent linear stiffness and damping parameters for the nonlinear elements (Böswald and Link, 2004). The fundamental assumption of the HB method is that the response of a nonlinear structure due to harmonic excitation can be approximated by a harmonic function of the frequency of excitation,  $\Omega$  (in rad/s). Hence:

$$f(t) = \hat{f} \sin(\Omega t + \varphi) \Rightarrow \begin{cases} x \approx \hat{x} \sin(\Omega t) \\ \dot{x} \approx \Omega \hat{x} \cos(\Omega t) \\ \ddot{x} \approx -\Omega^2 \hat{x} \sin(\Omega t) \end{cases} \quad (2)$$

In order to illustrate this approach, let us consider the simple case of a single degree of freedom system:

$$m\ddot{x} + f_{nl}(x, \dot{x}) = f(t) \quad (3)$$

The nonlinear function  $f_{nl}(x, \dot{x})$  can be decomposed into a Fourier series which can be truncated keeping only the fundamental terms:

$$f_{nl}(x, \dot{x}) = a_0 + a_1 \sin(\Omega t) + b_1 \cos(\Omega t) + \dots \quad (4)$$

where the coefficients  $a_0$ ,  $a_1$  and  $b_1$  are given by:

$$\begin{aligned} a_0 &= \frac{1}{2\pi} \int_0^{2\pi} f_{nl}(x, \dot{x}) d\omega \\ a_1 &= \frac{1}{\pi} \int_0^{2\pi} f_{nl}(x, \dot{x}) \cos(\omega) d\omega \\ b_1 &= \frac{1}{\pi} \int_0^{2\pi} f_{nl}(x, \dot{x}) \sin(\omega) d\omega \end{aligned}$$

where  $\omega = \Omega t$ . The goal is to replace the nonlinear function  $f_{nl}(x, \dot{x})$  with equivalent elements. In the linear case:

$$f_{nl}(x, \dot{x}) = k_{eq} x + c_{eq} \dot{x} = k_{eq} [\hat{x} \sin(\Omega t)] + c_{eq} [\Omega \hat{x} \cos(\Omega t)] \quad (5)$$

After comparing Eq. (5) and (4) we note that:

$$k_{eq}(\hat{x}) = \frac{b_1}{\hat{x}} \quad (6)$$

$$c_{eq}(\hat{x}) = \frac{a_1}{\hat{x}\Omega} \quad (7)$$

The values of the equivalent parameter depend on the steady-state amplitude  $\hat{x}$ . The equivalent parameter for a nonlinear cubic stiffness can be expressed by:

$$k_{eq} = k + \frac{3}{4} k_{nl} \hat{x}^2 \quad (8)$$

The equivalent stiffness  $k_{eq}$  is a function of the amplitude  $\hat{x}$  and varies with the excitation frequency. From this equation it is possible to describe a linear FRF associated to the nonlinear system:

$$H_{eq}(\Omega) = \frac{1}{-m\Omega^2 + jc\Omega + k + \frac{3}{4} k_{nl} \hat{x}^2} \quad (9)$$

An optimization procedure can be proposed by considering the experimental FRF obtained by a sinusoidal excitation in a given frequency range,  $H_{ex}(\Omega)$ . The unknown parameters in Eq. (9) can be found by minimizing the following objective function:

$$J(\mathbf{p}) = \sum_{k=N_1}^{N_2} \left( |H_{ex}(\Omega_k)| - |H_{eq}(\Omega_k, \mathbf{p})| \right)^2 \quad (10)$$

where  $|\cdot|$  is the module,  $N_1$  and  $N_2$  indicate the initial and final index frequency point, respectively, close to an equivalent linear mode and  $\mathbf{p}$  is the vector of parameters to update; in our example,  $\mathbf{p} = k_{nl}$ . Classical local optimization procedures can be performed to solve the minimization problem. Another indicator could be used based on the covariance:

$$J(p) = \sum_{k=N_1}^{N_2} \text{cov} \left( |H_{ex}(\Omega_k)| - |H_{eq}(\Omega_k, p)| \right) \quad (11)$$

In a multi-degree of freedom (MDOF) system, the Eq. (9) can be replaced by a FRF matrix between the input-output signals related to the nonlinear parameters. In this case, the modified stiffness matrix  $\mathbf{K}_{md}$  is given by:

$$\mathbf{K}_{md} = \mathbf{K} + \sum_{i=1}^{N_{nl}} k_{eqi} \Theta_i^T \Theta_i \quad (12)$$

where the vector  $\Theta_i$  indicates the position of the lumped nonlinear parameter of the  $i^{\text{th}}$  nonlinear parameter, and  $N_{nl}$  is the number of nonlinear elements.

### Constitutive Relation Error

The problem in the CRE method is to find an admissible solution which verifies the less reliable equations and quantities as closely as possible. In the frequency domain, this is expressed by:

$$\text{Find } \mathbf{p} \in S_\omega \text{ which minimizes } e_\omega^2(\mathbf{p}) \text{ where } \mathbf{p} \in S_\omega \quad (13)$$

where  $e_\omega^2(\mathbf{p})$  is the CRE modified in each sampling frequency. The CRE contains all the less reliable information that is not verified by the admissible solution  $S_\omega$ . In the case of a FEM, the CRE is expressed based on the discrete fields  $\mathbf{U}$ ,  $\mathbf{V}$  and  $\mathbf{W}$ , and the structural matrices (Deraemaeker et al., 2002):

$$\begin{aligned} e_\omega^2(\mathbf{U}, \mathbf{V}, \mathbf{W}) &= \frac{\gamma}{2} \{ \mathbf{U} - \mathbf{V} \}^* \left[ \mathbf{K}_{md} + \mathbf{T} \Omega^2 \mathbf{C} \right] \{ \mathbf{U} - \mathbf{V} \} \\ &+ \frac{1-\gamma}{2} \{ \mathbf{U} - \mathbf{W} \}^* \Omega^2 \mathbf{M} \{ \mathbf{U} - \mathbf{W} \} \\ &+ \frac{r}{1-r} \{ \Theta \mathbf{U} - \mathbf{U}_{ex} \}^* \mathbf{G}_r \{ \Theta \mathbf{U} - \mathbf{U}_{ex} \} \end{aligned} \quad (14)$$

where  $\gamma$  and  $\mathbf{T}$  are constants and  $\mathbf{G}_r$  represents a weighting matrix for the test-analysis distances, given by:

$$\mathbf{G}_r = \frac{\gamma}{2} \left[ \mathbf{K}_{mdr} + \mathbf{T} \Omega^2 \mathbf{C}_r \right] + \frac{1-\gamma}{2} \omega^2 \mathbf{M}_r \quad (15)$$

where the subscript  $r$  indicates the reduced matrix and  $\mathbf{K}_{md}$  is the modified stiffness matrix given by Eq. (12). The fields  $\mathbf{U}$ ,  $\mathbf{V}$  and  $\mathbf{W}$  must be admissible and are computed by solving the following linear system of equations for each frequency value:

$$\mathbf{AZ} = \mathbf{B} \quad (16) \quad f_{nl}(x_1, k_{nl}) = k_{nl}x_1^3 \quad (19)$$

where

$$\mathbf{A} = \begin{bmatrix} \frac{\gamma}{2}(\mathbf{K}_{md} + \mathbf{T}\Omega^2\mathbf{C}) & \frac{1-\gamma}{2}\Omega^2\mathbf{M} \\ \frac{\gamma}{2}(\mathbf{K}_{md} + \mathbf{T}\Omega^2\mathbf{C}) & \frac{1-\gamma}{2}(\mathbf{K}_{md} - j\Omega\mathbf{M}) \\ (\mathbf{K}_{md} + j\Omega\mathbf{C}) & -\Omega^2\mathbf{M} \\ \frac{r}{1-r}\Theta^T\mathbf{G}_r\Theta & \\ \mathbf{0} & \\ (-\mathbf{K}_{md} - j\Omega\mathbf{C} + \Omega^2\mathbf{M}) & \end{bmatrix}$$

$$\mathbf{Z} = \begin{Bmatrix} \mathbf{U} - \mathbf{V} \\ \mathbf{U} - \mathbf{W} \\ \mathbf{U} \end{Bmatrix}$$

$$\mathbf{B} = \begin{Bmatrix} \frac{r}{r-1}\Theta^T\mathbf{G}_r\Theta \\ \mathbf{0} \\ \mathbf{F}(\Omega) \end{Bmatrix}$$

To summarize, the CRE method requires the evaluation of Eq. (14) for each nonlinear parameter of cubic stiffness defined in the matrix  $\mathbf{K}_{md}$ . The procedure used for nonlinear model updating assumes also a linearization by HB method. However, this technique expands the information on unmeasured points through the estimation of the different displacement fields using the Eq. (16). In comparison with the HB method which attempts to minimize output errors, the CRE method leads to the minimization of a residual having a strong physical meaning. This method requires information on the displacements and the excitation forces in the frequency domain and assumes that the linear parameters are known.

In order to evaluate the CRE total energy, an indicator is computed in a frequency range close to the equivalent linear mode of interest. This metric is obtained for each nonlinear parameter  $k_{nl}$ :

$$E_{CRE}(k_{nl}) = \sum_{k=N_1}^{N_2} \alpha_k e(k_{nl})^2 \quad (17)$$

where  $\alpha_k$  is a value to normalize the energy.

### Restoring Force Surface Method

The RFS method rewrites the Eq. (1) in a different form in order to emphasize the nonlinear function  $\mathbf{f}_{nl}(\mathbf{x}, \dot{\mathbf{x}})$ :

$$\mathbf{f}_{nl}(\mathbf{x}, \dot{\mathbf{x}}) = \mathbf{F}(\mathbf{t}) - \mathbf{M}\ddot{\mathbf{x}} - \mathbf{C}\dot{\mathbf{x}} - \mathbf{K}\mathbf{x} \quad (18)$$

If the values of excitation forces, accelerations, velocities, displacements, and the linear structural matrix are assumed to be known, then the nonlinear function  $\mathbf{f}_{nl}(\mathbf{x}, \dot{\mathbf{x}})$  can be estimated. Moreover, if the order and degree of nonlinearity is known, the method has been shown to work well. For example, in our benchmark, this term is a function of the displacement  $\mathbf{x}$  and the nonlinear parameter  $k_{nl}$ :

It is thus possible to propose an indicator using the Eqs. (18) and (19). For example, one can use the following objective function considering that the nonlinear force vector in Eq. (18) is the experimental value, and the value given by Eq. (19) is the model-predicted value for each time instant:

$$J(k_{nl}) = \sum_{k=0}^N (f_{nl}^e(x(t_k), \dot{x}(t_k)) - f_{nl}^m(x_1(t_k), k_{nl}))^2 \quad (20)$$

where  $N$  is the number of time points considered and the superscripts  $e$  and  $m$  indicate the experimental and the model data, respectively. Another indicator can be obtained using the covariance of this residual:

$$J(k_{nl}) = \sum_{k=0}^N cov(f_{nl}^e(x(t_k), \dot{x}(t_k)) - f_{nl}^m(x_1(t_k), k_{nl})) \quad (21)$$

The acceleration vector can be estimated using the numerical derivative of the velocity:

$$\ddot{x} = \lim_{\delta t \rightarrow 0} \frac{\delta \dot{x}}{\delta t} \quad (22)$$

In the numerical example in this paper, the Eq. (18) is replaced by the following expression:

$$f_{nl}(x, \dot{x}) = -m\ddot{x}_1 - (c_1 + c_2)\dot{x}_1 - (k_1 + k_2)x_1 + k_2x_2 + c_2\dot{x}_2 \quad (23)$$

as, since we are working with the free response,  $\mathbf{F}(t)$  is null. It is worth observing that this method requires information about the displacement and velocity of the first and second masses. The advantage of this approach is that it allows an optimal value to be found without having to solve an optimization problem. The exact value of a parameter vector  $\mathbf{p} = k_{nl}$  can be found by solving the following problem:

$$\mathbf{p} = (\mathbf{X}^T \mathbf{X})^{-1} \mathbf{X}^T \mathbf{f}_{nl}(\mathbf{x}, \dot{\mathbf{x}}) \quad (24)$$

where  $\mathbf{X}$  is the regressive vector that contains the acceleration, velocity and displacement vectors.

### Karhunen-Loève Decomposition

In this method, a vector  $\mathbf{z}[k]$  of the response components corresponding to  $m$  measurements locations is formed, according to:

$$\mathbf{z}[k] = [z_1[k] \quad z_2[k] \quad \dots \quad z_m[k]] \quad (25)$$

The covariance matrix,  $\Psi(m \times m)$ , constructed from spatial measurement locations summed over all discrete time samples, is obtained by:

$$\psi = \sum_{k=1}^N \mathbf{z}[k] \mathbf{z}[k]^T \quad (26)$$

The eigenvalue problem associated to the covariance matrix satisfies:

$$\psi v_i = \lambda_i v_i \quad (27)$$

where  $\lambda_i$  and  $v_i$  are the eigenvalues and eigenvectors, respectively. The eigenvector  $v_i$  is called a principal component of the covariance matrix or proper orthogonal model (POM) (Sohn et al., 2000).

The nonlinear model updating can be based on the minimization of the difference between the experimental and simulated POM, with the advantage of having a metric requiring a limited number of measurements points.

Several methods can be used to compute behavior metrics with the POM. Lenaerts et al. (2001) used the differences between quantities resulting from the singular value decomposition the matrix defined in Eq. (26),  $\psi = U\Sigma V^T$ . This objective function is given by:

$$J(k_{nl}) = \sum_i \sum_j (\Delta U_{ij})^2 + \sum_j (\Delta \Sigma_{ij})^2 + \sum_j \sum_k (\Delta V_{jk})^2 \quad (28)$$

where  $U$  ( $m \times m$ ) and  $V$  ( $m \times m$ ) are orthogonal matrices  $U^T U = I$  and  $V^T V = I$ , with  $I$  being the identity matrix, and  $\Sigma = \text{diag}(\sigma_1, \sigma_2, \dots, \sigma_n)$ , where  $\sigma_i$  are the singular values of the covariance matrix  $\psi$  ( $m \times m$ ). Only the dominant terms are used to compute the summation indicated in Eq. (28). Another common function is based on the Modal Assurance Criterion (MAC) between the experimental and model-predicted POM. This function is used in the work of Kerschen et al. (2002) in the form:

$$J(k_{nl}) = \frac{-1}{q} \sum_{i=1}^q \text{MAC}(v_{ie}, v_{im}) \in [-1 \ 0] \quad (29)$$

where  $q$  is the number of POM considered and the subscripts  $e$  and  $m$  are relative to experimental and model POM, respectively. However the POD is a linear projection, so it also fails when working with strong nonlinearities (Kerschen, 2002).

### Results

In this section, we will compare the performance of the different metrics presented above for nonlinear model updating. Equations (10), (11), (17), (20), (21) and (28) are applied to the numerical simulation data obtained in Section 2. All metrics are normalized with respect to their maximum values.

Figures (6) to (11) show the curves of the objective function over a range of values of the unknown nonlinear parameter. The exact value is indicated by the vertical line in order to facilitate the comparison with the actual minima in the curves which are the points to which an optimization algorithms are expected to converge. Moreover, the figures are divided according to the level of nonlinearity and the domain of the test, either frequency or time. The nonlinearity levels considered are obtained by applying different amplitudes of the excitation force,  $F = 0.1 \text{ N}$ ,  $0.25 \text{ N}$  and  $1.0 \text{ N}$ , for weak, medium and strong nonlinearity, respectively.

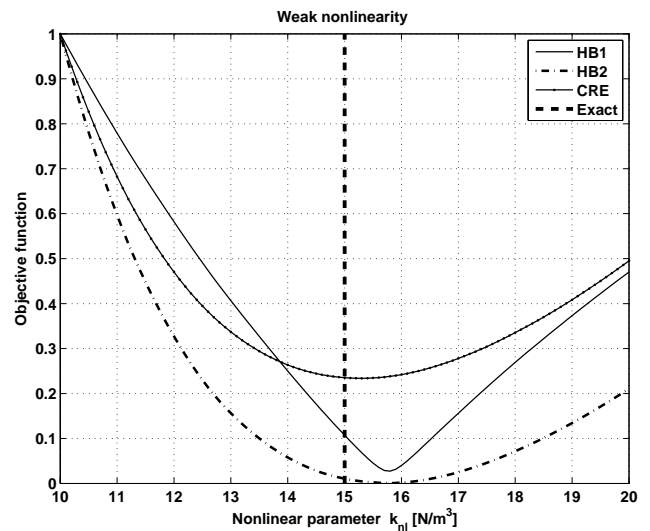


Figure 6. Evolution of the frequency residuals with the variation of the nonlinear parameter considering weak nonlinearity, where HB1 and HB2 are the residuals by using Eqs. (10) and (11), respectively.

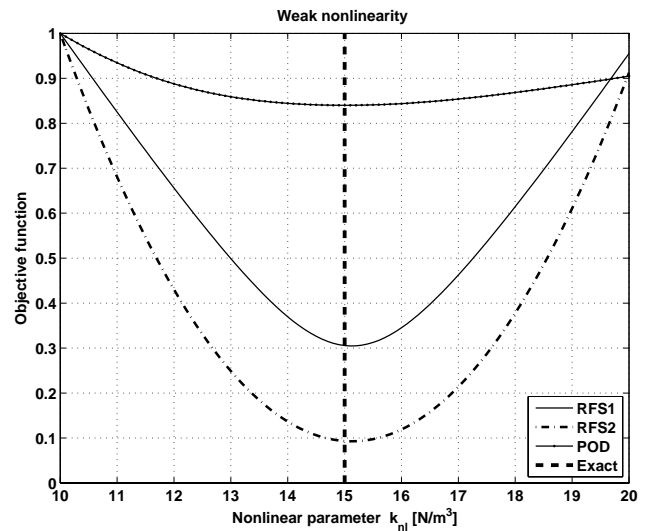


Figure 7. Evolution of the time residuals with the variation of the nonlinear parameter considering weak non-linearity, where RFS1 and RFS2 are the residuals by using Eqs. (20) and (21), respectively.

The first remark is that all curves are convex and hence well adapted to conventional local optimization procedures. The frequency methods studied here introduce in a strong linearization due the application of the HB method, once it is considered that the response of a nonlinear structure due to harmonic excitation is approximated by a harmonic function with contribution only provided by the fundamental frequency.

In this example the minimum value is found far from the exact value, as seen in figures (6), (8) and (10). Quantitatively speaking, this error is about 7%. In the case of strong nonlinearity, the curves become multimodal, which can be more difficult to handle in an optimization loop.

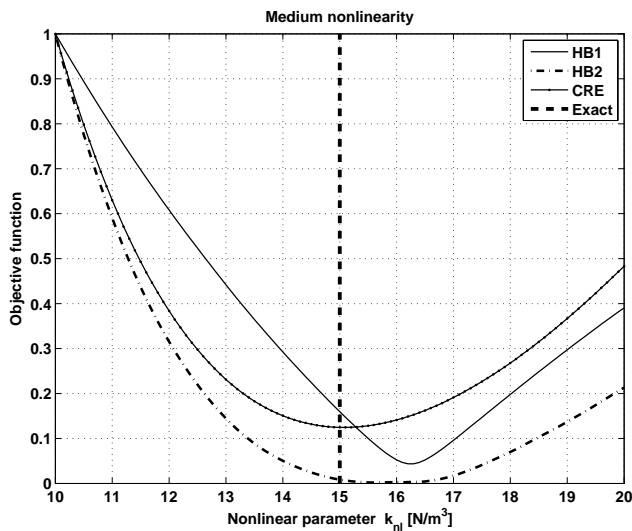


Figure 8. Evolution of the frequency residuals with the variation of the nonlinear parameter considering medium nonlinearity, where HB1 and HB2 are the residuals by using Eqs. (10) and (11), respectively.

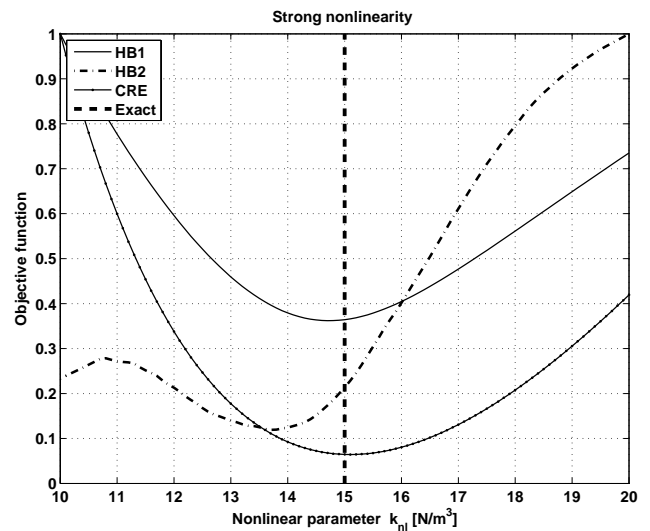


Figure 10. Evolution of the frequency residuals with the variation of the nonlinear parameter considering strong nonlinearity, where HB1 and HB2 are the residuals by using Eqs. (10) and (11), respectively.

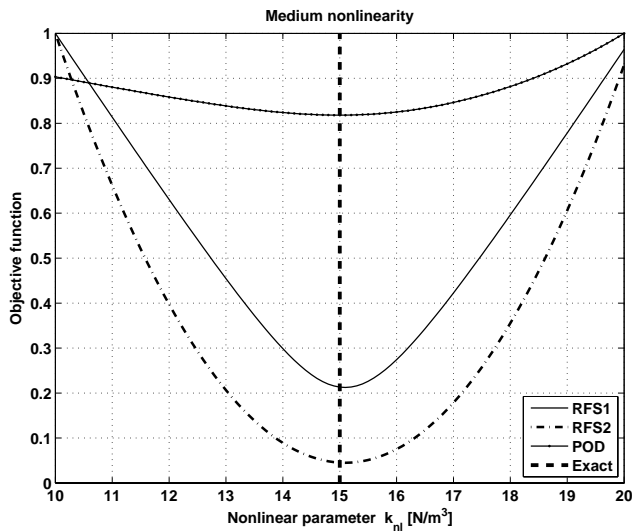


Figure 9. Evolution of the time residuals with the variation of the nonlinear parameter considering medium nonlinearity, where RFS1 and RFS2 are the residuals by using Eqs. (20) and (21), respectively.

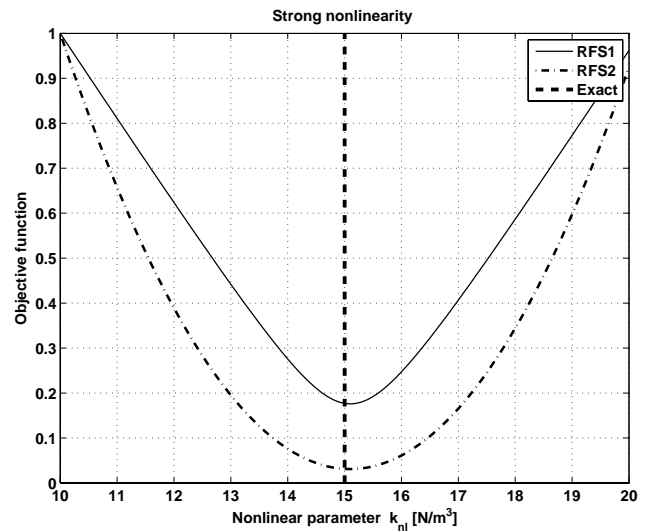


Figure 11. Evolution of the time residuals with the variation of the nonlinear parameter updating considering strong nonlinearity, where RFS1 and RFS2 are the residuals by using Eqs. (20) and (21), respectively.

In the frequency domain, the CRE gives superior results in comparison to the HB method since in this approach the FRF information on the mass 2, considered unmeasured, is estimated by solving the linear system given by Eq. (16).

In the time domain, the same can be said for the RFS method which benefits from a knowledge of a complete set of measurement points. The RFS approach also appears to be best adapted to treat all types of nonlinearities since the method is based on the exact equations. In all cases the minima of the curves correspond to the exact value of the nonlinear parameter  $k_{nl}$ . However, it is unrealistic to expect a complete knowledge of the system state vector as is required in this approach.

The POD method only requires the output signals, since it is assumed that the nature of excitation force is known. This characteristic makes this approach very promising for nonlinear updating based on operational data in comparison to the other methodologies studied here, which require laboratory tests under controlled conditions. However, we also note that the POD is very sensitive to the sampling frequency used and number of samples. Lenaerts et al. (2001) discussed how to choose these parameters. If these values are not defined correctly, the results can diverge from the exact parameters, and the shape of the objective function can change considerably. Another important point to observe is that the POD is basically a linear projection so it is not necessarily well adapted to strong nonlinear behaviors. In this case, the nonlinear POD could be not used with strong nonlinearities which have been omitted from the figure. A solution is to use a clustering technique, for example fuzzy c-means clustering, to separate the data in groups,

and then to apply the POD to each cluster in order to try to preserve the character of the nonlinear effects. This technique is known as nonlinear proper orthogonal decomposition (Kerschen, 2002).

In terms of computational costs, the frequency methods are more demanding because they require the simulation of a sinusoidal excitation over the frequency range for each iteration. The POD also requires the solution of the nonlinear equations of motion for each value of  $k_{nl}$ . The lowest computational cost is required by the RFS methodology.

## Final Remarks

The different metrics discussed in the present paper for comparing nonlinear model updating technique have proven to be effective in working with structures with local and weak nonlinearities. However, in the case of strong nonlinearity, only the RFS method provided accurate results. Nonetheless, this approach must be adapted in order to be applied to complex structures. In perspective, further study should focus on two aspects: (1) nonlinear methods capable of accounting for strong nonlinear effects, and (2) a time domain approach based on the constitutive equation error, which should have the advantage of the RFS method without the constraint of measuring all model degrees of freedom. Moreover, in order to consider nonlinear updating in systems with strong nonlinearities and to overcome the above-mentioned difficulties, it will be fundamental to consider unconventional approaches based on adaptive filters, nonlinear state estimation, as well as other recent techniques based on the Volterra series.

## Acknowledgements

The authors would like to thank the Centre National d'Etudes Spatiales, CNES – Toulouse for their generous support in this project. The authors also acknowledge the Associate Editor and the reviewers for their valuable comments.

## References

Böswald, M. and Link, M., 2004, "Identification of non-linear joint parameters by using frequency response residuals", In: International Conference on Noise Vibration Engineering, pp. 3121 – 3140.

Campello, R. J., Favier, G. and Amaral, W. C., 2004, "Optimal expansions of discrete-time volterra models using laguerre functions", *Automatica*, Vol. 40, No. 1, pp. 815 – 822.

A. Deraemaeker, Ladevèze, P. and Leconte, Ph., 2002, "Reduced bases for model updating in structural dynamics based on constitutive relation error", *Computer Methods in Applied Mechanics and Engineering*, Vol. 191, pp. 2427 – 2444.

Friswell, M. I. and Mottershead, J. E., 1995, "Finite Element Model Updating in Structural Dynamics", Kluwer Academy Publishers.

Kerschen, G., 2002, "On the Model Validation in Non-linear Structural Dynamics", PhD Thesis, Université de Liège, Belgium, 184 p.

Kerschen, G., Golinval, J. C. and Worden, K., 2001, "Theoretical and experimental identification of a non-linear beam", *Journal of Sound and Vibration*, Vol. 244, No. 4, pp. 597 – 613.

Kerschen, G., Worden, K., Vakakis, A. F. and Golinval, J. C., 2006, "Past, present and future of nonlinear system identification in structural dynamics", *Mechanical Systems and Signal Processing*, Vol. 20, pp. 502 – 592.

Lenaerts, V., Kerschen, G. and Golinval, J. C., 2001, "Proper orthogonal decomposition for model updating of non-linear mechanical system", *Mechanical Systems and Signal Processing*, Vol. 15, No. 1, pp. 31 – 43.

Meyer, S. and Link, M., 2003, "Modelling and updating of local nonlinearities using frequency response residuals", *Mechanical Systems and Signal Processing*, Vol. 17, No. 1, pp. 219 – 226.

Puel, G., 2001, "Mise en évidence et recalage des non-linéarités locales en dynamique des structures", Master's thesis, Université Paris VI, France.

Schmidt, R., 1994, "Updating non-linear components", *Mechanical Systems and Signal Processing*, Vol. 8, No. 6, pp. 679 – 690.

Schultze, J. F., Hemez, F. M., Doebling, S.W. and Sohn, H., 2001, "Application of non-linear system model updating using feature extraction and parameter effect analysis", *Shock and Vibration*, Vol. 8, pp. 325 – 337.

Silva, S., Dias Junior, M. and Lopes Junior, V., 2007, "Damage detection in a benchmark structure using Ar-Arx models and statistical pattern recognition", *Journal of the Brazilian Society of Mechanical Sciences and Engineering*, Vol. 29, No. 2, pp. 174 – 184.

Sohn, H., Czarnecki, J. J., Farrar, C. R., and Fellow, P. E., 2000, "Structural Health Monitoring using Statistical Process Control", *Journal of Structural Engineering*, ASCE, Vol. 126, No. 11, pp. 1356 - 1363.

Worden, K. and Manson, G. A. , 2005, "A Volterra series approximation to the coherence of the duffing oscillator", *Journal of Sound and Vibration*, Vol. 286, No. 3, pp. 592 – 547.

Worden, K. and Tomlinson, G. R., 2001, *Nonlinearity in Structural Dynamics*. London : Institute of Physics Publishing.

Zhang, L. and Guo, Q., 2007, "A case study of model updating and validation of a frame structure with highly non-linear component", In: XXV International Modal Analysis Conference, CD-ROM.