

On the Amazonian species of the genus *Scytodes* Latreille (Arachnida, Araneae, Scytodidae)

Cristina A. Rheims^{1, 2} & Antonio D. Brescovit¹

¹ Laboratório de Artrópodes, Instituto Butantan. Avenida Vital Brasil 1500, 05503-900 São Paulo, São Paulo, Brasil.
E-mail: cris.rheims@butantan.gov.br; adbresc@terra.com.br

² Departamento de Zoologia, Instituto de Biociências, Universidade de São Paulo. Rua do Matão, Travessa 14, 101, 05508-900 São Paulo, São Paulo, Brasil.

ABSTRACT. Eight species of *Scytodes* Latreille, 1804 are newly described: *Scytodes iara* **sp. nov.** and *S. caure* **sp. nov.** from Amazonas; *S. mapinguari* **sp. nov.** from Amazonas and Roraima; *S. curupira* **sp. nov.** from Amazonas and Rondônia; *S. saci* **sp. nov.** from Roraima; and *S. jurupari* **sp. nov.**, *S. tinkuan* **sp. nov.** and *S. caipora* **sp. nov.** from Acre. In addition, the female of *S. altamira* Rheims & Brescovit, 2000 is described and new records are presented for *S. auricula* Rheims & Brescovit, 2000, *S. fusca* Walckenaer, 1837, *S. longipes* Lucas, 1844, *S. martiusi* Brescovit & Höfer, 1999, *S. piroca* Rheims & Brescovit, 2000, *S. romitii* Caporiacco, 1947 and *S. vieirae* Rheims & Brescovit, 2000.
KEY WORDS. Neotropical, spitting spiders, taxonomy.

RESUMO. Oito novas espécies de *Scytodes* Latreille, 1804 são descritas: *Scytodes iara* **sp. nov.** e *S. caure* **sp. nov.** do Amazonas; *S. mapinguari* **sp. nov.** do Amazonas e de Roraima; *S. curupira* **sp. nov.** do Amazonas e de Rondônia; *S. saci* **sp. nov.** de Roraima; e *S. jurupari* **sp. nov.**, *S. tinkuan* **sp. nov.** e *S. caipora* **sp. nov.** do Acre. A fêmea de *S. altamira* Rheims & Brescovit, 2000 é descrita e novos registros são apresentados para *S. auricula* Rheims & Brescovit, 2000, *S. fusca* Walckenaer, 1837, *S. longipes* Lucas, 1844, *S. martiusi* Brescovit & Höfer, 1999, *S. piroca* Rheims & Brescovit, 2000, *S. romitii* Caporiacco, 1947 e *S. vieirae* Rheims & Brescovit, 2000.
PALAVRAS CHAVE. Aranhas-cuspideiras, neotropical, taxonomia.

According to PLATNICK (2003), the family Scytodidae includes to date 157 species, in five genera, of which *Scytodes* Latreille, 1804 is by far the largest, with 152 known species. The genus is widespread in the Neotropical region and includes several synanthropic species (BRESCOVIT & RHEIMS 2000).

Until the year 2000, the genus included 43 neotropical species, of which 10 were described exclusively from Brazil and five presented distribution ranges that included the Brazilian territory (BRESCOVIT & RHEIMS 2000). Between 2000 and 2002, several papers were published concerning the Brazilian scytodid fauna (BRESCOVIT & RHEIMS 2000, RHEIMS & BRESCOVIT 2000, 2001a, b), thus increasing the number of Brazilian species to 18 and seven, respectively.

This is the first of a series of papers dealing with the scytodid fauna of the different fitogeographical regions of Brazil. It covers the scytodid fauna from the Amazonian region complementing the initial surveys presented by BRESCOVIT & HÖFER (1999) and RHEIMS & BRESCOVIT (2000). The Brazilian Amazonia includes the states of Amazonas, Pará, Acre, Rondônia and Amapá as well as western Tocantins, western

Maranhão and northern Mato Grosso (FERNANDES 1998). It is characterized by extense forested areas, reasonably high temperatures year round and high pluviometric indices (FERNANDES 1998, AB'SÁBER 2003).

Nine species have been described from the Amazonian region: *S. paarmani* and *S. martiusi*, from Reserva Florestal Adolpho Ducke and *S. janauari* from Lago Janauari, all from Manaus, Amazonas, described by HÖFER & BRESCOVIT (1999); *S. piroca*, *S. auricula* and *S. vieirae*, from Parque Nacional da Serra do Divisor, Acre; *S. balbina* from Balbina and *S. mapia* from Borba, both in Amazonas; and *S. altamira* from Altamira, Pará, all described by RHEIMS & BRESCOVIT (2000). Besides these, six other species present distribution ranges that include the Brazilian Amazonia: *S. fusca* Walckenaer, 1837, *S. itapevi* Brescovit & Rheims, 2000, *S. lineatipes* Taczanowski, 1874, *S. longipes* Lucas, 1844, *S. championi* F.O.P.-Cambridge, 1899 and *S. romitii* Caporiacco, 1947. In this paper we present the description of eight new species of Amazonian *Scytodes*, as well as the description of the female of *S. altamira*. In addition we present new records for the known species occurring in the Amazon region.

MATERIAL AND METHODS

The material examined belongs to the following institutions: (AMNH) American Museum of Natural History, New York, N.I. Platnick; (IBSP) Instituto Butantan, São Paulo, I. Knysak; (INPA) Instituto Nacional de Pesquisa da Amazônia, Manaus, C. Magalhães; (MCTP) Museu de Ciências e Tecnologia, Pontifícia Universidade Católica do Rio Grande do Sul, Porto Alegre, A.A. Lise; (MCZ) Museum of Comparative Zoology, Cambridge, G. Giribet and L. Leibensperger; (MPEG) Museu Paraense Emílio Goeldi, Belém, A.B. Bonaldo; (MZSP) Museu de Zoologia de São Paulo, São Paulo, R. Pinto da Rocha; (UA) Universidade do Amazonas, Manaus, N.O. Aguiar. Descriptions and terminology follow BRESCOVIT & RHEIMS (2000). All measurements are in millimeters. Epigynes were dissected and submerged in clove oil to study internal structures.

Scytodes altamira Rheims & Brescovit, 2000

Figs 1-3

Scytodes altamira Brescovit & Rheims, 2000: 729, figs 4G-H (male holotype from Cachoeira, Altamira, Pará, Brazil, deposited in IBSP 4212, examined). – Platnick, 2003 (electronic catalog).

Diagnosis. The females of *S. altamira* resemble those of *S. mapia* Rheims & Brescovit (2000: 727, fig. 4E-F) by the small rounded spermathecae and semicircle hyaline pocket. They are distinguished by the straight and narrow positioning ridges and by the spermathecae, partially covered by the hyaline pockets (Figs 2-3).

Description. Male described by RHEIMS & BRESCOVIT (2000).

Female (IBSP 39372). Carapace pale yellow with brown pattern as shown on figure 1. Chelicerae yellowish with dorsal longitudinal brown stripe. Pedipalps pale yellow. Palpal patellae and tibiae with dorsal and prolateral brown stripes. Labium pale yellow, brown at base. Endites pale yellow. Sternum cream coloured with brown margins in front of each coxae and labium. Legs yellowish, except patellae brown. Femora and tibiae I-IV with ventral longitudinal brown stains. Tibiae I-IV with median transversal brown bands and brown distal ends. Abdomen gray with very thin transversal lines at posterior end (Fig. 1). Total length 6.80. Carapace domed, 3.10 long, 2.60 wide. Eye diameters: PME 0.18, ALE 0.16, PLE 0.18. Lateral eyes on a tubercle. Chelicerae with subapical hyaline keel and eight conspicuous stridulatory ridges. Labium 0.24 long, 0.32 wide. Sternum 1.64 long, 1.16 wide. leg measurements: I – femur 6.20/patella 0.80/tibia 6.50/metatarsus 8.00/tarsus 0.90/total 22.20/II – 4.40/0.80/4.30/5.00/0.80/15.30/III – 2.90/0.80/2.50/2.90/0.70/9.80/IV – 4.30/0.80/4.00/4.70/0.80/14.60. Palpal femur with stridulatory pick short and stout on triangular and projected socket. Internal genitalia with small, rounded spermathecae partially covered by a large semicircular hyaline pocket. Copulation ducts inconspicuous (Fig. 3). Abdomen 3.70 long, 3.30 wide, covered with slender hairs.

Variation. Six males. Total length: 4.8-5.40; carapace: 2.50-2.80; femur I: 9.40-10.20; bulb: 0.90-0.96. Six female. Total length: 4.40-6.90; carapace: 2.40-3.40; femur I: 5.70-6.40.

Distribution. Northern Brazil, states of Pará and Amazonas.

Material Examined. *Amazonas*: BR 174, 80 Km N from Manaus, Fazenda C. Powell, 1 male, May 6, 2002, F. Rego *leg.* (INPA); Reserva do Km 41, 1 male, May 5, 2002, F. Rego *leg.* (INPA); Reserva Florestal, 1 male, Feb. 18, 2002, F. Rego *leg.* (INPA); 80 km from Manaus, Fazenda Porto Alegre, 1 male, 1989-1992, H.G. Fowler *leg.* (IBSP 39399), 2 males, Jan. 21-23, 2002, F. Rego *leg.* (INPA); Reserva Colosso, 2 females, Feb., 1990 – Mar., 1991, H.G. Fowler, E.M. Venticinque & R. Vieira *leg.* (IBSP 39394, MCZ); Reserva Cabo Frio, 1 female, May 16, 1990, H.G. Fowler, E.M. Venticinque & R. Vieira *leg.* (MCZ), 1 male, Mar. 13, 2002, F. Rego *leg.* (INPA); 50 km from Manaus, Fazenda Esteio, Feb. 6, 1986, B.C. Klein *leg.* (UA); *Pará*: Jacareacanga, 1 male and 1 female, Dec. 1968, M. Alvarenga *leg.* (AMNH); Juruti, Platô do Rio Juruti, Igarapé Mutum (02°36'45.2"S; 56°11'27.5"W), 6 male and 1 female, Sept. 5-14, 2002, Bonaldo & Guimaraes *leg.* (MPEG 0401, 0402, 0403, 0405, 0407, 0409, 0411).

Scytodes tinkuan sp. nov.

Figs 4-6

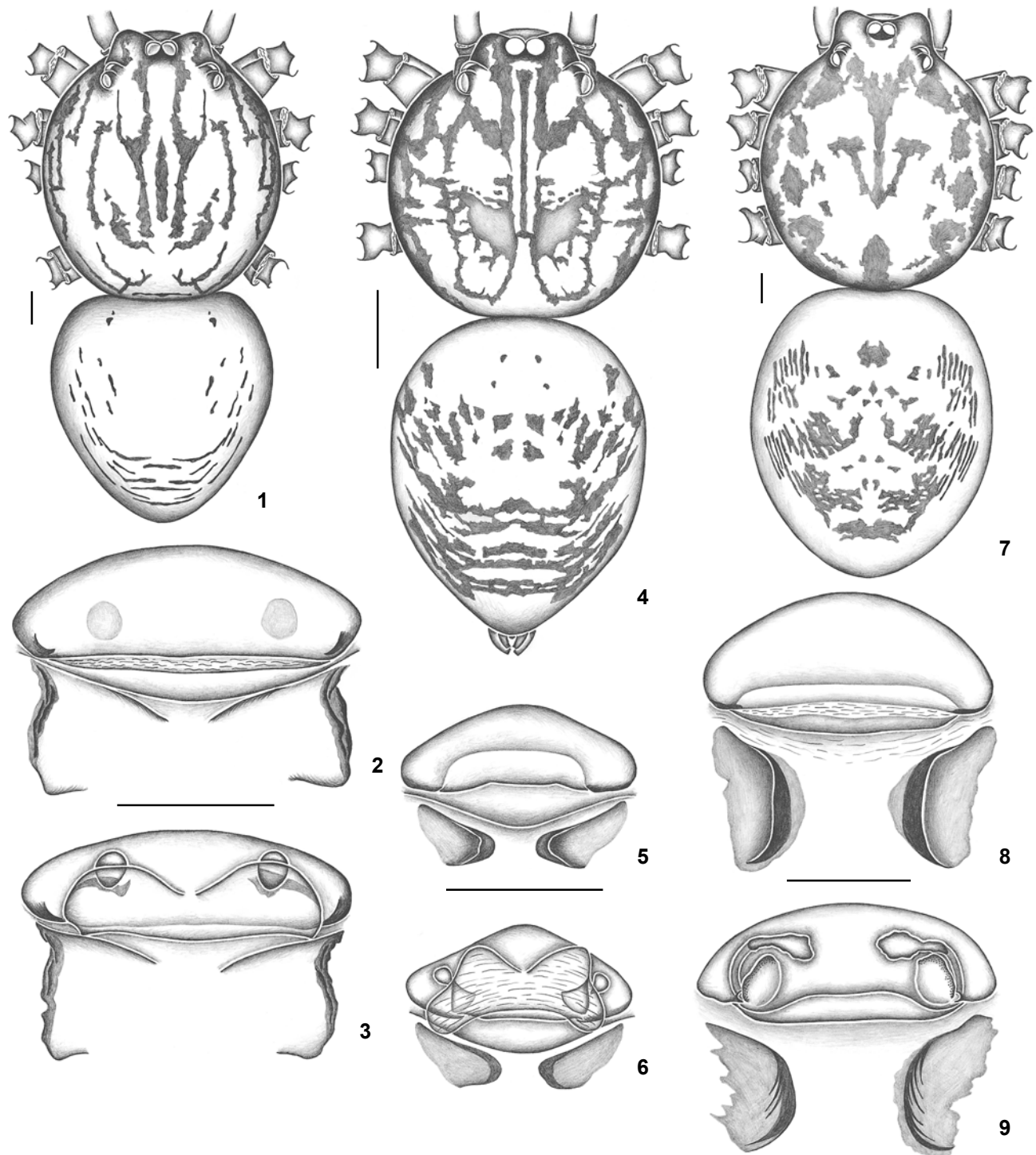
Types. Female holotype and female paratype from Parque Nacional da Serra do Divisor, Acre, Brazil, Mar. 15, 1997, L. Resende & R.S. Vieira *leg.*, deposited in IBSP 12364.

Etymology. The specific name is a noun in apposition taken from the Amazonian folklore. "Tinkuan" is believed to be an enchanted bird that when sings predicts death.

Diagnosis. The females of *S. tinkuan* sp. nov. are distinguished from the remaining Amazonian species by the u-shaped positioning ridges (Fig. 5) and by the fused posterior hyaline pockets laterally extending below the epigynal pouch limits (Fig. 6).

Description. Male. Unknown.

Female (holotype). Carapace orange, medially lighter, with brown pattern as shown on figure 4. Chelicerae orange with dorsal longitudinal brown stripe. Pedipalps orange. Palpal femora with scattered brown stains and palpal tibiae with prolateral and dorsal brown stripes. Labium pale yellow, brown at base. Endites uniformly yellow. Sternum pale yellow with brown margins in front of each coxae and labium. Legs yellow. Femora I-IV with ventral pair of longitudinal brown stripes. Tibiae I-IV with median transversal brown band and brown distal ends. Abdomen grayish with black pattern (Fig. 4). Total length 3.80. Carapace domed, 1.90 long, 1.70 wide. Eye diameters: PME 0.12, ALE 0.12, PLE 0.14. Lateral eyes on a tubercle. Chelicerae with subapical hyaline keel and 5 conspicuous stridulatory ridges. Labium 0.14 long, 0.18 wide. Sternum 0.92 long, 0.80 wide. leg measurements: I - femur 2.70/patella 0.50/tibia 2.80/metatarsus 3.30/tarsus 0.70/total 10.00/II – 2.00/0.50/2.00/2.30/0.60/7.40/III – 1.30/1.40/0.50/1.40/0.50/5.10/IV – 2.00/



Figures 1-9. (1-3) *Scytodes altamira*: (1) female, body, dorsal view; (2) epigynum, ventral view; (3) epigynum, dorsal view; (4-6) *S. tinkuan* sp. nov.: (4) female, body, dorsal view; (5) epigynum, ventral view; (6) epigynum, dorsal view; (7-9) *S. mapinguari* sp. nov.: (7) female, body, dorsal view; (8) epigynum, ventral view; (9) epigynum, dorsal view. Scale lines: 0.5 mm.

0.50/1.90/2.10/0.60/7.10. Palpal femur with stridulatory pick short and stout on rounded and slightly projected socket. Epigynum with u-shaped positioning ridges and foveas separated from each other by half their width (Fig. 5). Internal genitalia with one small round spermathecae on each side and hyaline pocket with anterior sclerotized area on each side. Copulation ducts inconspicuous (Fig. 6). Abdomen 1.90 long, 1.60 wide, covered with slender hairs.

Variation: 2 females. Total length: 3.50-3.80; Carapace: 1.60-1.90; femur I: 1.90-2.70.

Distribution. Only known from the type locality.

Material examined. Only the types.

Scytodes mapinguari sp. nov.

Figs 7-9

Types. Female holotype from Ilha de Maracá, Roraima, Brazil, Feb. 4, 1991, A.B. Bonaldo *leg.*, deposited in MCTP 1826; Paratypes: 1 male and 2 juveniles, Gruta do Batismo (MZSP 21852); 2 females, Gruta Refúgio do Maroaga (IBSP 40862; MZSP 21851); close to Gruta Refúgio do Maroaga (IBSP 40825; MZSP 21850), all from Presidente Figueiredo, Manaus, Amazonas, Brazil, Aug. 23-31, 2003, R. Pinto da Rocha *leg.*; 1 female, Estação Científica Ferreira Penna, Flona Caxiuanã, Melgaço, Jul. 14, 2002, A.B. Bonaldo *leg.* (MPEG 0914).

Etmology. The specific name is a noun in apposition taken from the Amazonian folklore. "Mapinguari" is a giant, hairy monster with a single eye on his forehead and a vertical mouth that reaches his belly button. He is considered a protector of the forest.

Diagnosis. The females of *S. mapinguari* sp. nov. are distinguished from the remaining Amazonian species by the pear-shaped spermathecae, slightly sclerotized and with very long copulation ducts and by the small oval hyaline pocket (Fig. 9).

Description. Male. Unknown.

Female (holotype) Carapace orange with brown pattern, as shown on figure 7. Chelicerae orange with large dorsal brown stain at base. Pedipalps transversally striped orange and brown. Labium and endites orange, retrolaterally brown. Sternum orange with slightly darker margins and brown stains in front of each coxae. Legs transversally striped, as pedipalps. Abdomen grayish with black pattern (Fig. 7). Total length 7.20. Carapace domed, 3.40 long, 2.70 wide. Eye diameters: PME 0.16, ALE 0.18, PLE 0.16. Lateral eyes on a tubercle. Chelicerae with subapical hyaline keel and 7 stridulatory ridges. Labium 0.32 long, 0.48 wide. Sternum 1.88 long, 1.18 wide. leg measurements: I - femur 6.20/patella 0.80/tibia 6.50/metatarsus 8.10/tarsus 1.30/total 22.90/II - 5.00/0.80/4.90/5.90/1.20/17.80/III - 3.30/0.80/3.60/3.90/1.10/12.70/IV - 5.00/0.80/4.90/5.20/1.20/17.10. Palpal femur with stridulatory pick short and stout on rounded socket. Epigynum with half-moon shaped positioning ridges and foveas separated from each other by one and a half times their width (Fig. 8). Abdomen 3.80 long, 3.10 wide, covered with slender hairs.

Variation. 6 females. Total length: 5.20-7.20; carapace: 2.40-4.00; femur I: 5.20-7.10.

Distribution. Northern Brazil, states of Amazonas and Roraima.

Material examined. BRAZIL, *Pará*: Melgaço, Estação Científica Ferreira Penna, FLONA Caxiuanã, 1 female, Jul. 14, 2002, A.B. Bonaldo *leg.* (MPEG 0915); Monte Alegre, 1 female, Jun. 16, 2001, A.B. Bonaldo *leg.* (MPEG 0521).

Scytodes iara sp. nov.

Figs 10-12

Types. Female holotype from Rio Urucu (04°51'56"S; 65°04'56"W), Coari, Amazonas, Brazil, Jan. 25 - Feb. 10, 1995, P.F. Bührnheim *et al. leg.*, deposited in UA. Paratype: 1 female, Rio Urucu (04°50'73"S; 65°02'37"W), Coari, Amazonas, Brazil, Aug. 14-25, 1993, P.F. Bührnheim & N.O. Aguiar *leg.* (IBSP 41917).

Etmology. The specific name is a noun in apposition taken from the Amazonian folklore. "Iara" is a beautiful dark haired woman with a dazzling body and a melodic voice that bewitches all that hear it. She is held responsible for boat accidents and child disappearances.

Diagnosis. The females of *S. iara* sp. nov. are distinguished from the remaining Amazonian species by the very small spermathecae and by the lack of hyaline pockets (Fig. 11).

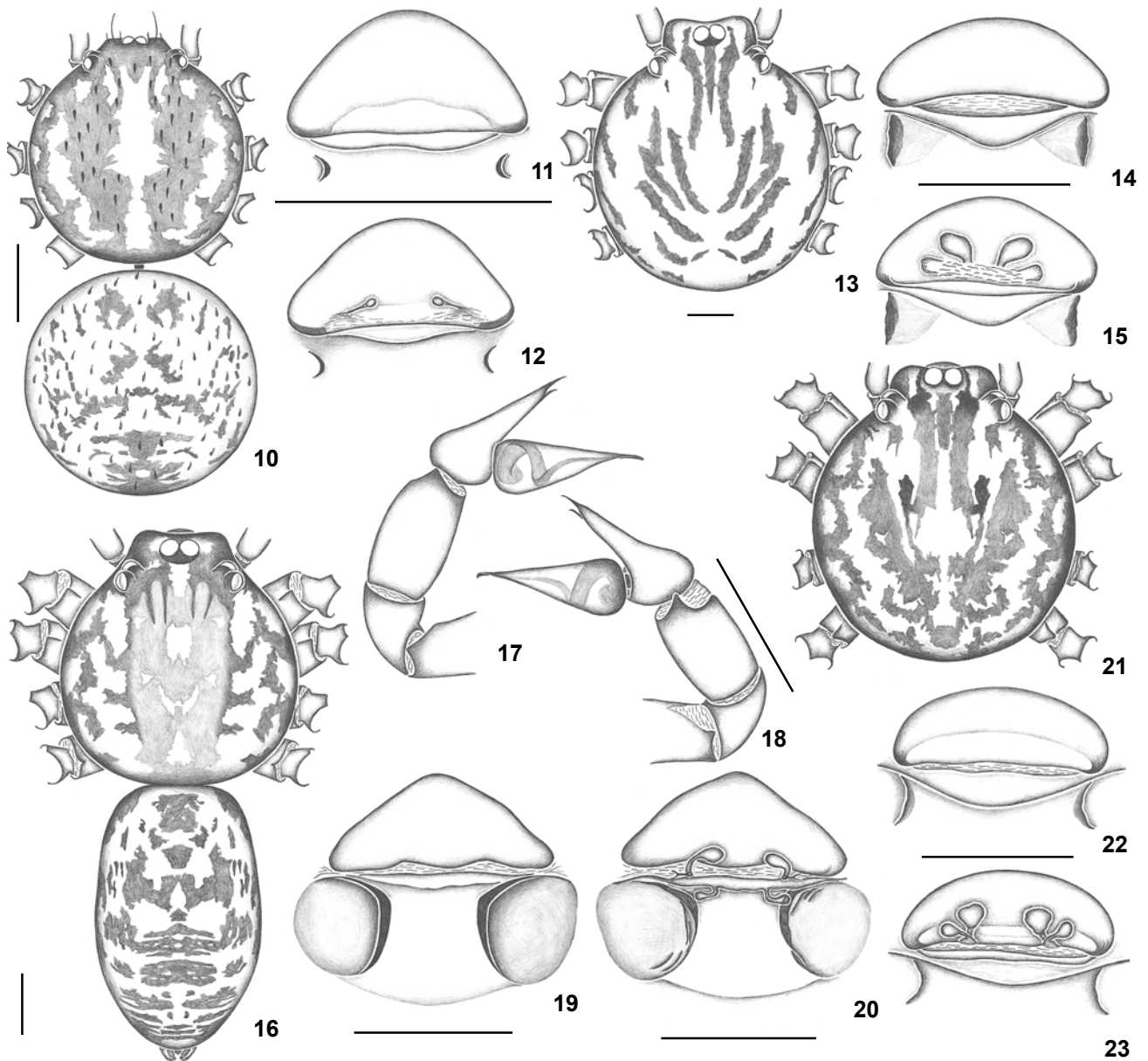
Description. Male. Unknown.

Female (holotype). Carapace orange with dark brown pattern, as shown on figure 10. Chelicerae orange with transversal brown stripe. Pedipalps orange. Palpal femora and tibiae with prolateral brown stripe. Labium and endites brown, distally lighter. Sternum pale yellow with median brown stain and brown stains in front of each coxae. Legs transversally striped brown and orange, except tarsi and patellae, uniformly orange. Abdomen grayish with sparse dark brown pattern (Fig. 10). Total length 2.20. Carapace domed, 1.05 long, 1.00 wide. Eye diameters: PME 0.07, ALE 0.07, PLE 0.07. Lateral eyes on a tubercle. Chelicerae with subapical hyaline keel and inconspicuous stridulatory ridges. Labium 0.12 long, 0.19 wide. Sternum 0.52 long, 0.52 wide. leg measurements: I - femur 0.90/patella 0.30/tibia 0.84/metatarsus 0.84/tarsus 0.34/total 3.22/II - 0.76/0.30/0.66/0.72/0.28/2.72/III - 0.62/0.30/0.54/0.58/0.24/2.88/IV - 0.78/0.30/0.72/0.82/0.26/2.88. Palpal femur with stridulatory pick short and stout with rounded socket. Epigynum with epigynal pouch slightly triangular. Crescent moon shaped positioning ridges and foveas separated from each other by more than ten times their width (Fig. 11). Internal genitalia with small spermathecae with long and narrow copulation ducts (Fig. 12). Abdomen 1.15 long, 1.10 wide, covered with sparse spatulated hairs.

Variation. 2 females. Total length: 2.20-2.40; carapace: 1.05-1.10.

Distribution. Only known from the type locality.

Material examined. Only the types.



Figures 10-23. (10-12) *Scytodes iara* sp. nov.: (10) female, body, dorsal view; (11) epigynum, ventral view; (12) dorsal view; (13-15) *S. saci* sp. nov.: (13) female, carapace, dorsal view; (14) epigynum, ventral view; (15) dorsal view; (16-20) *S. curupira* sp. nov.: (16) male, body, dorsal view; (17) left palp, prolateral view; (18) retrolateral view; (19) female, epigynum, ventral view; (20) dorsal view; (21-23) *S. jurupari* sp. nov.: (21) female, carapace, dorsal view; (22) epigynum, ventral view; (23) dorsal view. Scale lines: 0.5 mm.

Scytodes saci sp. nov.

Figs 13-15

Types. Female holotype from Ilha de Maracá, Roraima, Brazil, Feb. 4, 1991, A.B. Bonaldo *leg.*, deposited in MCTP (ex-1966).

Etymology. The specific name is a noun in apposition taken from the Amazonian folklore. "Saci" is a small entity

that protects the forest by scaring hunters away. He is also known for his mischief and his pranks.

Diagnosis. The females of *S. saci* resemble those of *S. championi* F.O.P.-Cambridge (BRESCOVIT & RHEIMS 2001: 317, fig. 17) by the shape of the spermathecae. They differ by the slightly rectangular hyaline pockets (Fig. 15) and by the straight posi-

tioning ridges (Fig. 14).

Description. Male. Unknown.

Female (holotype). Carapace yellow with brown pattern as shown in figure 13. Chelicerae yellow with dorsal longitudinal black stripe. Pedipalps cream coloured with prolateral black stripe. Palpal tibiae with prolateral and dorsal black stripe. Labium and endites cream coloured. Sternum cream coloured with black margins in front of each coxae. Legs yellowish. Femora I-IV with pair of ventral longitudinal interrupted black stripes. Tibiae I-IV with dark ends and median transversal black band. Abdomen cream coloured. Anterior half mottled with black spots. Posterior half with three transversal irregular black stripes. Total length 4.60. Carapace domed, 2.40 long, 2.10 wide. Eye diameters: PME 0.12, ALE 0.16, PLE 0.18. Lateral eyes on a tubercle. Chelicerae with subapical hyaline keel and inconspicuous stridulatory ridges. Labium 0.20 long, 0.30 wide. Sternum 1.20 long, 0.94 wide. leg measurements: I - femur 5.00/patella 0.70/tibia 5.00/metatarsus 6.20/tarsus 0.90/total 17.80/II - 3.50/0.70/3.40/4.10/0.70/12.40/III - 2.40/0.60/1.90/2.40/0.60/7.90/IV - 3.40/0.70/3.20/3.70/0.70/11.70. Palpal femur with stridulatory pick long and slender on rounded and projected socket. Epigynum with straight positioning ridges (Fig. 14). Internal genitalia with slightly oval spermathecae, short copulation ducts and slightly rectangular hyaline pockets, distally sclerotized (Fig. 15). Abdomen 2.20 long, 1.70 wide, covered with slender hairs.

Distribution. Only known from the type locality.

Material examined. Only the holotype.

Scytodes curupira sp. nov.

Figs 16-20

Types. Male holotype from Barreira do Matupiri, Manicoré, Amazonas, Brazil, Apr. 18, 1996, Equipe IBSP/SMNK leg., deposited in IBSP 8881. Paratypes: 1 male, with the same data as holotype (IBSP 36289); 1 male and 2 females, Porto Velho, Rondônia, Brazil, Apr. 15, 1996, Equipe IBSP/SMNK leg. (IBSP 8703, 8713); 1 female, Reserva Dimona, Manaus, Amazonas, Brazil, Feb. 28, 2002, F. Rego leg. (INPA).

Etymology. The specific name is a noun in apposition taken from the Amazonian folklore. The "Curupira" is a small entity whose body is covered with long hairs and whose feet are turned backwards. It is considered a protector of the forest, killing those who hunt for sport but protecting those who hunt for survival.

Diagnosis. *Scytodes curupira* sp. nov. resembles *S. fusca* Walckenaer by the male palp with a slender embolus and no distal projections or membranes (Figs 17-18, BRIGNOLI 1976: 174, fig. 110, BRESCOVIT & RHEIMS 2000: 321, figs 5-6) and by the shape of the females' epigynum fovea (Fig. 19, BRIGNOLI 1976: 174, fig. 107, BRESCOVIT & RHEIMS 2000: 321, fig. 7). They differ by the smaller size, straight tipped bulb of the male palp (Figs 17-18) and by the presence of two pairs of oval spermathecae, one slightly larger and above the posterior limits of the epigynal pouch and the other upside down and below the posterior limits of the epigynal pouch (Fig. 20).

Description. Male (holotype) Carapace pale yellow with dark brown pattern, as shown on figure 16. Chelicerae pale yellow, brown at base. Pedipalps pale yellow, brown at distal end of articles. Labium brown. Endites pale yellow. Sternum brown, slightly lighter towards the center. Legs pale yellow with transversal brown bands. Abdomen grayish with black pattern (Fig. 16). Total length 3.30. Carapace slightly domed, 1.60 long, 1.40 wide. Eye diameters: PME 0.12, ALE 0.14, PLE 0.14. Lateral eyes on a tubercle. Chelicerae with subapical hyaline keel and 7 stridulatory ridges. Labium 0.20 long, 0.20 wide. Sternum 0.94 long, 0.76 wide. leg measurements: I - femur 4.60/patella 0.50/tibia 4.70/metatarsus 5.00/tarsus 0.90/total 15.70/II - 3.60/0.50/3.40/4.10/0.90/12.50/III - 2.40/0.50/1.90/2.30/0.70/7.80/IV - 3.40/0.50/3.20/3.50/0.90/11.50. Palpal femur with stridulatory pick short and stout on rounded and projected socket. Cymbium with a pair of strong distal spines, one slightly below the other. Bulb 0.42 long, gradually narrowed towards the straight, but slightly twisted tip (Figs 17-18). Abdomen 1.70 long, 1.00 wide, covered with slender hairs.

Female. (IBSP 32269). Coloration pattern as in male. Total length 4.30. Carapace domed, 2.30 long, 1.60 wide. Eye diameters: PME 0.12, ALE 0.12, PLE 0.12. Lateral eyes on a tubercle. Chelicerae as in male. Labium 0.22 long, 0.30 wide. Sternum 1.06 long, 0.84 wide. leg measurements: I - femur 2.90/patella 0.50/tibia 2.80/metatarsus 3.20/tarsus 0.80/total 10.20/II - 2.50/0.50/2.20/2.60/0.80/8.60/III - 1.70/0.50/1.40/1.60/0.70/5.90/IV - 2.50/0.50/2.10/2.40/0.80/8.30. Palpal femur as in male. Epigynum with slightly triangular epigynal pouch, moon shaped, narrow positioning ridges and rounded foveas, separated from each other by their width (Fig. 19). Abdomen 2.00 long, 1.80 wide, as in male.

Variation. 3 males. Total length: 3.30-3.50; carapace: 1.50-1.60; femur I: 4.40-4.60; bulb: 0.38-0.42. 3 females. Total length: 4.00-5.20; carapace: 2.10-2.30; femur I: 2.90-3.40.

Distribution. Northern Brazil, states of Amazonas and Rondônia.

Material examined. Only the types.

Scytodes jurupari sp. nov.

Figs 21-23

Types. Female holotype from Reserva Extrativista de Catuaba, Senador Guiomar, Acre, Brazil, Jun. 25, 2001, E. Morato leg., deposited in IBSP 40828. Paratype: 1 female, with the same locality and collector, Jul. 31, 2001 (IBSP 40829).

Etymology. The specific name is a noun in apposition taken from the Amazonian folklore. "Jurupari" is one of many indian demons, but was used by the jesuits to represent the "Devil", as known in Christianity.

Diagnosis. The females of *S. jurupari* sp. nov. are distinguished from the remaining Amazonian species by the presence of a pair of spermathecae, the anterior slightly larger and straight and the posterior directed outwards (Fig. 23).

Description. Male. Unknown.

Female (holotype). Carapace orange with brown pattern, as shown on figure 21. Chelicerae pale orange with longitudinal dorsal brown stripe. Pedipalps pale orange with a prolateral dark brown stripe. Tibiae with a dorsal brown stripe. Labium pale yellow, brown at base. Endites uniformly pale yellow. Sternum pale yellow with dark brown margins in front of each coxae and brown stains extending towards the center. Legs orange. Femora I-IV with three ventral longitudinal black stripes. Patellae I-IV dark brown at base. Tibiae I-IV with black ends and longitudinal black stripe. Abdomen cream colored with anterior pair of brown inverted v-shaped lines and three posterior transversal stripes. Total length 5.90. Carapace domed, 2.50 long, 2.00 wide. Eye diameters: PME 0.14, ALE 0.14, PLE 0.14. Lateral eyes on a tubercle. Chelicerae with subapical hyaline keel and five slightly conspicuous stridulatory ridges. Labium 0.16 long, 0.30 wide. Sternum 1.22 long, 0.94 wide. leg measurements: I - femur 3.80/patella 0.60/tibia 4.30/metatarsus 4.80/tarsus 0.90/total 14.40/II - 2.80/0.60/2.90/3.40/0.60/10.30/III - 1.90/0.60/1.80/2.00/0.50/6.80/IV - 2.80/0.60/2.60/2.70/0.60/9.30. Palpal femur with stridulatory pick long and strong on rounded and projected socket. Epigynum with very thin moon shaped positioning ridges and very slightly conspicuous fovea (Fig. 22). Abdomen 3.40 long, 2.80 wide, covered with slender hairs.

Variation. Two females. Total length: 4.60-5.90; carapace: 2.20-2.50; femur I: 3.80-4.00.

Distribution. Only known from the type locality.

Material examined. Only the types.

Scytodes caure sp. nov.

Figs 24-26

Types. Female holotype from Reserva do Km 41, BR 174, 80 Km N from Manaus, Amazonas, Brazil, Aug., 2000, A.J. Santos *leg.*, deposited in IBSP 26214. Paratype: 1 female, Reserva Dimona, BR 174, 80 Km N from Manaus, Amazonas, Brazil, Feb. 26, 2003, F. Rego *leg.* (INPA).

Etymology. The specific name is a noun in apposition taken from the Amazonian folklore. "Cauré" is a small enchanted bird that symbolizes happiness and fortune. It is considered a good luck sign.

Diagnosis. The females of *S. caure* sp. nov. are distinguished from the remaining Amazonian species by the internal genitalia with very large, slightly conical posterior hyaline pockets with a slightly triangular sclerotized lateral area (Fig. 26).

Description. Male. Unknown.

Female (paratype). Carapace yellow, lighter at centre, with dark brown pattern, as shown on figure 24. Chelicerae pale yellow with dorsal longitudinal brown stripe. Pedipalps pale yellow. Palpal femora and tibiae with prolateral longitudinal brown stripes. Palpal patellae with brown ends. Labium and endites pale yellow, brown at base. Sternum cream coloured with dark brown margins in front of each coxae and a pair of

irregular dark brown stains at centre. Legs pale yellow with ventral longitudinal brown stains and brown distal ends, except tarsi uniformly yellow. Abdomen pale yellow with black pattern (Fig. 24). Total length 3.40. Carapace slightly domed, 1.70 long, 1.40 wide. Eye diameters: PME 0.10, ALE 0.12, PLE 0.12. Lateral eyes on a tubercle. Chelicerae with subapical hyaline keel and inconspicuous stridulatory ridges. Labium 0.16 long, 0.26 wide. Sternum 0.98 long, 0.80 wide. leg measurements: I - femur 4.90/patella 0.50/tibia 4.80/metatarsus 5.30/tarsus 0.70/total 16.20/II - 3.60/0.50/3.10/3.60/0.50/11.30/III - 2.00/0.40/1.70/2.10/0.50/6.70/IV - 3.50/0.50/3.00/3.50/0.60/11.10. Palpal femur with stridulatory pick long and slender on rounded and slightly projected socket. Epigynum with slightly rectangular epigynal pouch and widely separated, straight positioning ridges (Fig. 25). Internal genitalia with oval spermathecae and very large hyaline pockets, completely covering the copulation ducts (Fig. 26). Abdomen 1.70 long, 1.00 wide, covered with slender hairs.

Variation. Two females. Total length: 3.40-3.60; carapace: 1.70-1.80; femur I: 4.90-5.20.

Distribution. Northern Brazil, state of Amazonas.

Material examined. Only the types.

Scytodes caipora sp. nov.

Figs 27-29

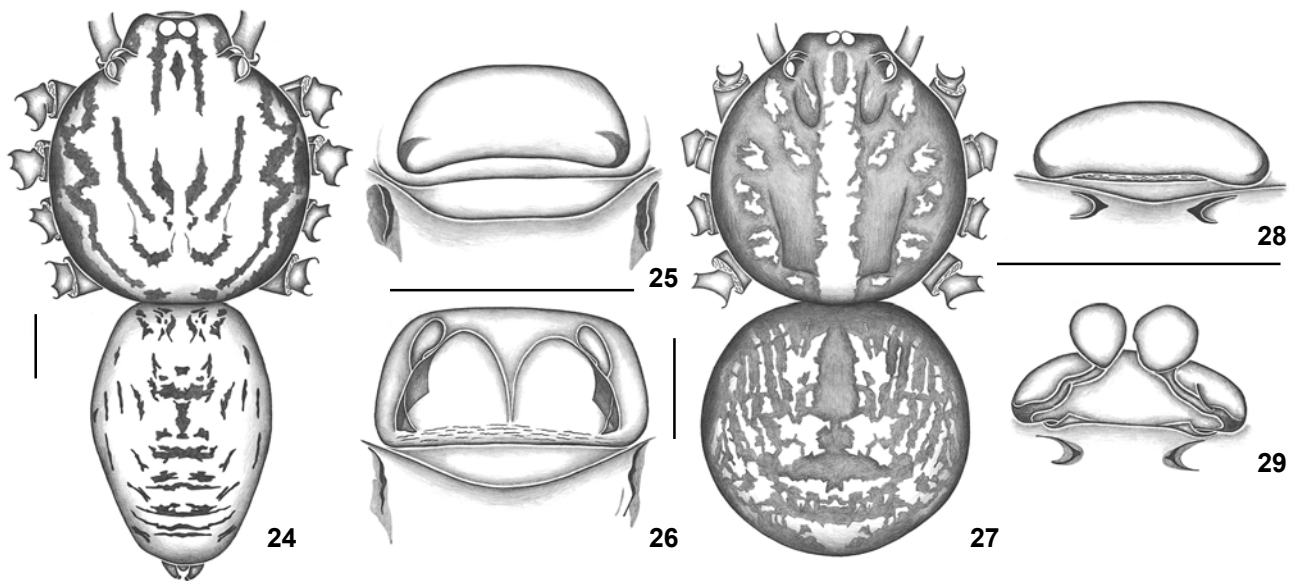
Types. Female holotype from Reserva Extrativista de Catuaba, Senador Guiomar, Acre, Brazil, Aug. 31, 2001, E. Morato *leg.* deposited in IBSP 40827.

Etymology. The specific name is a noun in apposition taken from the Amazonian folklore. "Caipora" is a small indian, whose hair is the color of fire, that rides wild pigs and protects the forest and its animals.

Diagnosis. The females of *S. caipora* sp. nov. are distinguished from the remaining Amazonian species by their minute size, the horseshoe shaped positioning ridges (Fig. 28) and by the large oval spermathecae surpassing the anterior limits of the epigynal pouch (Fig. 29).

Description. Male. Unknown.

Female (holotype). Carapace pale orange with dark brown pattern as shown on figure 27. Chelicerae yellow, brown at base. Labium brown, distally orange. Endites yellow, brown at base. Sternum brown with slightly darker borders. Legs and pedipalps orange with transversal brown bands. Abdomen cream colored with brown pattern (Fig. 27). Total length 2.00. Carapace domed, 1.00 long, 0.90 wide. Eye diameters: PME 0.06, ALE 0.06, PLE 0.06. Lateral eyes on a tubercle. Chelicerae with subapical hyaline keel and inconspicuous stridulatory ridges. Labium 0.08 long, 0.14 wide. Sternum 0.52 long, 0.52 wide. leg measurements: I - femur 0.80/patella 0.24/tibia 0.80/metatarsus 0.88/tarsus 0.32/total 3.04/II - 0.64/0.26/0.64/0.74/0.38/2.66/III - 0.56/0.24/0.44/0.56/0.24/2.04/IV - 0.80/0.30/0.62/0.88/0.26/2.86. Palpal femur with stridulatory pick short



Figuras 24-29. (24-26) *Scytodes caure* sp. nov.: (24) female, body, dorsal; (25) epigynum, ventral view; (26) dorsal view; (27-29) *S. caipora* sp. nov.: (27) female, body, dorsal view; (28) epigynum, ventral view; (29) dorsal view. Scale lines: 0.5 mm.

and stout on rounded and slightly projected socket. Epigynum foveas separated from each other by twice their width (Fig. 28). Internal genitalia with large spermathecae, very long copulation ducts and no hyaline pockets (Fig. 29). Abdomen 1.00 long, 1.00 wide, rounded sparsely covered with spatulated hairs.

Distribution. Only known from the type locality.

Material examined. Only the holotype.

New records

Scytodes auricula Rheims & Brescovit, 2000 – BRAZIL, Amazonas: Forquilha, Parque Nacional Jaú, 1 male and 2 females, Jun. 27, 2000, E.M. Venticinque leg. (IBSP 36475); Coari, Porto Urucu, Rio Urucu, 6 males and 6 females, Jul. 14-24, 2003, Bonaldo, Guimarães & Dias leg. (MPEG 0589, 0590, 0591, 0593, 0594, 0595, 00599, 0600, 0603, 0604, 0607). Acre: Rio Branco, Reserva Extrativista de Catuaba, 11 males, 21 females and 9 juveniles, 2001-2002, E. Morato leg. (IBSP 38434-38436, 41148-41162, 41165). Pará: Jurutí, Plateau do Rio Juruti, Igarapé Mutum (02°36'10.6"S, 56°12'25.8"W), 1 female, Sept. 6, 2002, A.B. Bonaldo leg. (MPEG 0399); Senador José Porfírio, margem direita do Rio Xingu, 1 male, Feb. 22, 2001, Equipe MPEG (MPEG 0500).

Scytodes championi F.O.P.-Cambridge, 1899 – BRAZIL. Pará: Almeirim, Reserva Genética do Pacamari, 2 females, Feb. 22, 2003, Barreiros & Guimarães leg. (MPEG 0347-0348).

Scytodes fusca Walckenaer, 1837 – BRAZIL, Roraima: Rio Sumuru, 1 female, Oct., 1966, M. Alvarenga leg. (MZSP 8559); Pará: Belém, Parque Municipal de Belém, 1 female, Feb. 12, 1959, A.M. Nadler leg. (AMNH), Canindé, Rio Gurupi, 1 female, Dec. 1-5, 1964, B. Malkin leg. (AMNH), 1 female, Feb.-May, 1964, J.

Carvalho leg. (AMNH); São Geraldo do Araguaia, Serra das Andorinhas, 1 male, Dec. 4, 2001, D.D. Guimarães (MPEG 0468).

Scytodes longipes Lucas, 1844 – BRAZIL, Pará: Belém, Parque Municipal de Belém, 1 male, Feb. 12, 1959, A.M. Nadler leg. (AMNH).

Scytodes martiusi Brescovit & Höfer, 1999 – BRAZIL, Amazonas: 80 Km from Manaus, Reserva Dimona, 6 males, 11 females and 5 juveniles, 1989-1992, H.G. Fowler, E.M. Venticinque & R. Vieira leg. (IBSP 39385-39391; MCZ)

Scytodes piroca Rheims & Brescovit, 2000 – BRAZIL, Amazonas: 80 Km N of Manaus, BR 174, Reserva do Km 41, 3 males, 27 females and 2 juveniles, 1989-1992, H.G. Fowler, E.M. Venticinque & R. Vieira leg. (IBSP 39367-39371, 39373-39374, 39376-39384; MCZ); Reserva Florestal, 2 females, 1989-1992, H.G. Fowler, E.M. Venticinque & R. Vieira leg. (IBSP 39400; MCZ); Reserva Colosso, 2 males, 7 females and 1 juveniles, 1989-1992, H.G. Fowler, E.M. Venticinque & R. Vieira leg. (IBSP 39392-39393, 39395-39398; MCZ); Fazenda Cabo Frio, 1 male and 2 females, 1989-1992, H. G. Fowler, E. M. Venticinque & R. Vieira leg. (MCZ); Rondônia: Costa Marques, 1 female, Jan. 17-18, 2002, E. Ramires leg. (IBSP 36965).

Scytodes romitii Caporiacco, 1947 – BRAZIL, Amazonas: Forquilha, Parque Nacional Jaú, 1 male and 2 females, Jun. 27-28, 2000, E. M. Venticinque leg. (IBSP 36473-36474); Coari, Paraná Apaurá, 3 males, Sept. 24, 2003, Venticinque et al. leg. (IBSP), Trocaris, 2 males and 1 females, Sept. 25, 2003, Venticinque et al. leg. (IBSP, MPEG, INPA), Porto Urucu, Rio Urucu, 2 females, Jul. 16-19, A.B. Bonaldo leg. (MPEG 0592, 0601); Codajás, Lago do Poção, 1 female, Sept. 27, 2003,

Venticinque *et al. leg.* (IBSP); Itacoatiara, Ilha do Soreano, 2 females, Nov. 6, 2003, Venticinque *et al. leg.* (MPEG, INPA), Trindade, 1 male, Nov. 6, 2003, Venticinque *et al. leg.* (IBSP); Juruá, Ilha da Consciência, 1 female, Sept. 19, 2003, Venticinque *et al. leg.* (IBSP), Lago Tamaniqua, 1 female, Sept. 19, 2003, Venticinque *et al. leg.* (IBSP), Paraná Teiú, 1 male and 1 female, Sept. 19, 2003, Venticinque *et al. leg.* (IBSP, INPA); Jutai, Ilha do Xibeco, Restinga do Cevalho, 1 female, Sept. 17, 2003, Venticinque *et al. leg.* (IBSP); Manacapuru, 1 female, Sept. 29, 2003, Venticinque *et al. leg.* (IBSP); Santo Antonio do Iça, Ilha do Espanhol, 1 male, Sept. 15, 2003, Venticinque *et al. leg.* (IBSP), Paraná Canini, Lago Chicotuba, 1 male and 1 female, Sept. 15, 2003, Venticinque *et al. leg.* (IBSP, MPEG); Tefé, 1 male, Sept. 23, 2003, Venticinque *et al. leg.* (IBSP); Urucurituba, Costa do Cucuiari, 6 males, Nov. 4, 2003, Venticinque *et al. leg.* (INPA, IBSP), Ressaca da Iracema, 1 male, Nov. 5, 2003, Venticinque *et al. leg.* (IBSP). *Acre*: Senador Guimaraes, Reserva Extrativista de Catuaba, 2 females, Jun.-Jul., 2001, E. Morato *leg.* (IBSP 41163-41164). *Pará*: Barcarena, Reserva Samaúma (01°29'43"S, 48°42'36"W), 6 males and 4 females, Nov. 15-20, 2001, Dias, Guimaraes & Bonaldo *leg.* (MPEG 0265, 0266, 0271, 0278, 0279, 0306), Igarapé Tauá (01°36'S, 48°43'W), 1 female, Nov. 20, 2001, L.A. Quaresma *leg.* (MPEG 0273); Juruti, Margem do Rio Amazonas (02°24'33.2"S, 56°26'10.6"W), 2 males and 1 female, Sept. 18, 2002, A.B. Bonaldo *leg.* (MPEG 0400, 0404); Melgaço, Estação Científica Ferreira Penna, FLONA Caxiuanã, 1 female, Jul. 14, 2002, C. Pereira *leg.* (MPEG); Gurupá, Furinho, 1 male, Oct. 18, 2003, Venticinque *et al. leg.* (IBSP), São José, 1 female, Oct. 18, 2003, Venticinque *et al. leg.* (MPEG).

Scytodes vieirae Rheims & Brescovit, 2000 – BRAZIL, *Amazonas*: 80 km N from Manaus, BR 174, Reserva do Km 41, 2 males, Mar. – May, 1991, H.G. Fowler, E.M. Venticinque & R. Vieira *leg.* (IBSP 39375; MCZ).

ACKNOWLEDGEMENTS

We wish to thank Miguel Simó for helpful comments on the manuscript. This study was supported by CNPq and

“Fundação de Amparo à Pesquisa de São Paulo” (FAPESP 02/11277-9; 99/05446-8).

REFERENCES

- AB'SABER, A. 2003. **Os domínios de natureza no Brasil. Potencialidades paisagísticas.** São Paulo, Ateliê Editorial, 160p.
- BRESCOVIT, A.D. & H. HÖFER 1999. Four new species of litter inhabiting *Scytodes* spiders (Araneae, Scytodidae) from Amazonia. **Studies of Neotropical Fauna and Environment**, Lisse, **34**: 105-113.
- BRESCOVIT, A.D. & C.A. RHEIMS 2000. On the synanthropic species of the genus *Scytodes* Latreille (Araneae, Scytodidae) of Brazil, with synonymies and records of these species in other Neotropical countries. **Bulletin of the British Arachnological Society**, Dorset, **11** (8): 320-330.
- . 2001. Notes on the genus *Scytodes* Latreille (Araneae, Scytodidae) in the Central and South Americas. **Journal of Arachnology**, Denver, **29** (3): 312-329.
- BRIGNOLI, P.M. 1976. Beiträge zur Kenntnis der Scytodidae (Araneae). **Revue Suisse de Zoologie**, Genève, **83** (1): 125-191.
- FERNANDES, A. 1998. **Fitogeografia brasileira.** Fortaleza, Multigraf Editora, 340p.
- PLATNICK, N.I. 2003. **The world spider catalog version 3.5.** American Museum of Natural History, online at <http://research.amnh.org/entomology/spiders/catalog81-87/index.html>, acesso em 07/VI/2004.
- RHEIMS, C.A. & A.D. BRESCOVIT. 2000. Six new species of *Scytodes* Latreille, 1804 (Araneae, Scytodidae) from Brazil. **Zoosystema**, Paris, **22** (4): 719-730.
- . 2001a. Three new species of litter inhabiting spiders of the genus *Scytodes* Latreille from northeastern Brazil. **Spixiana**, München, **24** (2): 123-128.
- . 2001b. New species and records of *Scytodes* Latreille, 1804 of the “*globula* group” from Brazil (Araneae, Scytodidae). **Andrias**, Karlsruhe, **15**: 91-98.

Received in 02.III.2004; accepted in 16.VII.2004.