




Fungal endophytes of *Panicum maximum* and *Pennisetum purpureum*: isolation, identification, and determination of antifungal potential

Natália da Costa Maia¹, Patrícia Nirlane da Costa Souza², Bárbara Temponi Vilarino Godinho¹, Silvino Intra Moreira³, Lucas Magalhães de Abreu⁴, Liana Jank⁵,
Patrícia Gomes Cardoso^{1*} 

¹ Universidade Federal de Lavras, Departamento de Biologia, Lavras, MG, Brasil.

² Universidade Federal dos Vales do Jequitinhonha e Mucuri, Janaúba, MG, Brasil.

³ Universidade Federal de Lavras, Departamento de Fitopatologia, Lavras, MG, Brasil.

⁴ Universidade Federal de Viçosa, Departamento de Fitopatologia, Viçosa, MG, Brasil.

⁵ Embrapa Gado de Corte, Campo Grande, MS, Brasil.

ABSTRACT - This study aimed to isolate and identify endophytic fungi from the forage grass *P. maximum* and evaluate their ability to inhibit the growth of plant pathogenic fungi. One sample from *P. purpureum* grass was also included. Surface disinfected stem fragments were used for endophytic fungal isolation. One hundred and twenty-six endophytic fungi were isolated, of which 118 were from *P. maximum* and eight from *P. purpureum*. Morphological characteristics and internal transcribed spacer (ITS) and 18S (NS) sequence comparisons identified most isolated endophytic fungi as belonging to the phylum Ascomycota, with *Sarocladium* being the dominant genus. The isolates were subjected to *in vitro* antagonism tests against pathogenic fungi, and 31 endophytic fungi inhibited the growth of *Bipolaris maydis*, *Penicillium expansum*, and *Sclerotinia minor*. The results expand our knowledge of the diversity of endophytes associated with tropical grasses and suggest that they may represent new sources of antifungal metabolites for biocontrol and biotechnological purposes.

Key Words: antagonism, grasses, molecular identification, plant pathogens, rDNA

Introduction

In Brazil, forage grasses are the main source of animal feed for dairy and beef cattle (Lima et al., 2010). *P. maximum* and *P. purpureum* are two grass species originating from tropical Africa (Ndemah et al., 2000; Dinardo et al., 2003; Braz et al., 2006). These are the main forage grasses used for pasture formation in Central and South America, since they have high nutritional value and high dry matter production potential (Dias and Alves, 2008; Lédo et al., 2008; Lima et al., 2010; Queiróz et al., 2014). *Panicum maximum* is well diffused among livestock farmers, being considered one of the most productive in the Brazilian livestock industry (Jank et al., 2008; 2011). *Pennisetum purpureum* is important as forage for silage because of its high growth rate and biomass production per area, with great efforts,

therefore, being devoted to determining its palatability and nutritional values as an alternative forage crop (Wang et al., 2002).

Plants are constantly involved in interactions with a wide range of microbial populations. Endophytic fungi inhabit plant organs at some stage in their life cycle and colonize internal tissues of plants without causing apparent damage to their host (Pettrini, 1991). Endophytes constitute a valuable source of bioactive secondary metabolites (Naik et al., 2009), which may protect their host against pathogen, insect, or animal attacks, or even have direct or indirect effects on plant growth (Porrás-Alfaro and Bayman, 2011). There have been very few studies on warm season grasses and the endophytes associated with them (Ghimire et al., 2011). In this study, we surveyed the endophytic fungi naturally occurring in stems of *P. maximum* and *P. purpureum*, collected from three different locations in Brazil, and evaluated their ability to inhibit the growth of plant pathogenic fungi. To test such possible outcome, antagonism bioassays (*in vitro* tests with two or more organisms placed against each other in contact or not) were set. The inhibition, in the context of this study, is the ability of one organism to partially or totally diminish the growth of the other.

Received: September 16, 2017

Accepted: May 1, 2018

*Corresponding author: patricia@dbi.ufla.br

Copyright © 2018 Sociedade Brasileira de Zootecnia. This is an Open Access article distributed under the terms of the Creative Commons Attribution License (<http://creativecommons.org/licenses/by/4.0/>), which permits unrestricted use, distribution, and reproduction in any medium, provided the original work is properly cited.

Material and Methods

Plant samples of eleven cultivars of *P. maximum* and one of *P. purpureum* were collected in August and September 2012, and January 2013. Sampling sites included three experimental fields located in the Brazilian states of Mato Grosso do Sul and Minas Gerais (Table 1). Healthy tillers were collected from each plant at 10-15 cm above the soil and transported to a laboratory in plastic bags for fungal isolation.

Tillers were washed under running tap water and cut into 5-7-cm fragments. Surface disinfection was done by treating the stem fragments thrice with sterile water for 1 min, 96% ethanol for 3 min, 5% sodium hypochlorite for 3 min, and sterile water three times for 1 min each. Approximately 100 μ L of the last water wash was plated on PDA and incubated, as a sterilization control, followed by drying on sterile filter paper. Disinfected tissues were cut into 0.5-cm fragments and plated on PDA plates containing cefotaxime (250 μ g.mL⁻¹). Following an incubation at 25 °C, plates were checked regularly and fungal colonies emerging from the margins of sectioned tissues were subcultured onto PDA. Purified isolates were stored long-term in sterile microtubes containing sterile water, and kept at 4 °C.

Initial grouping of fungal isolates into morphotypes, and their identification to the genus level were based on colony appearance, mycelium color, and structures of conidiomata, conidiophore, and conidia (size, color,

shape, ornamentation, etc.). Cultivation of non-sporulating cultures on malt-extract-agar (MEA) was done to promote sporulation (Guo et al., 1998).

Sequencing of the internal transcribed spacer (ITS) and part of the 18S (NS) region of the rDNA was carried out for all isolates to support morphological identification and to identify non-sporulating fungi. Genomic DNA from pure cultures was extracted from the mycelial mat using a Mobio UltraClean® Microbial kit. Amplifications of ITS and 18S (NS) were carried out in 30 μ L reactions containing 15 μ L Qiagen *Taq* PCR Master Mix kit, 12 μ L of H₂O, 1 μ L of each primer (10 pmol), and 1 μ L of genomic DNA at 10 ng/ μ L. The internal transcribed spacer was amplified using primers ITS1 (TCCGTAGGTGAACCTGCGG) and ITS4 (TCCTCCGCTTATTGATATGC), with the reaction conditions as: 2 min at 95 °C, followed by 35 cycles of 1 min denaturation at 95 °C, 1 min of primer annealing at 50 °C, 1 min of extension at 72 °C, with a final elongation of 7 min at 72 °C. The NS was amplified using NS1 (GTAGTCATATGCTTGTCTC) and NS6 (GCATCACAGACCTGTTATTGCCTC) primers, and the reaction conditions were as follows: 1 min for initial denaturation at 94 °C, followed by 35 cycles of 35 s denaturation at 94 °C, 50 s of primer annealing at 55 °C, 2 min of extension at 72 °C, with a final elongation of 6 min at 72 °C. Amplifications were performed in a Programmable Thermal Controller-100, (MJ Research, Inc) thermocycler.

The PCR products were purified and sequenced by MacroGen. Consensus sequences were assembled using SeqAssem software and compared against the GenBank database through BLAST searches using the Mega 6 software (Tamura et al., 2013). The closest hit sequences were checked for their authenticity and used as references for molecular identification of endophytic isolates.

Isolates of seven plant pathogenic fungi, namely *B. maydis*, *Aspergillus ochraceus*, *P. expansum*, *S. minor*, *Fusarium verticillioides*, *Pyricularia oryzae*, and *Colletotrichum graminicola*, were used in the antagonism bioassays.

The endophytic fungi and plant pathogens were cultivated for seven days at 25 °C on PDA. Mycelial disks (5 mm) of each endophyte were transferred to one side of a PDA plate. After seven days of incubation, 5 mm mycelial disks of plant pathogens were inoculated onto opposite sides of the plates containing the endophytes. Control plates contained the pathogens inoculated without endophytes. After seven days of paired incubation at 25 °C, the percentage of growth inhibition of the pathogens was calculated in relation to the control (Fávaro et al., 2012). Tests were performed in triplicate.

Table 1 - Origin of samples of *P. maximum* and *P. purpureum* cultivars

Location	Sample/Cultivar
Embrapa Beef Cattle, Campo Grande - MS	<i>P. maximum</i> cv. Mombaça
	<i>P. maximum</i> cv. Tanzânia
	<i>P. maximum</i> cv. Massai
	<i>P. maximum</i> cv. Aruana
	<i>P. maximum</i> cv. Gatton
	<i>P. maximum</i> cv. BRS Zuri
	<i>P. maximum</i> cv. Milênio
	<i>P. maximum</i> cv. Colônia
	<i>P. maximum</i> cv. Tobiata
Universidade Federal de Lavras (UFLA)/Lavras - MG	<i>P. maximum</i> cv. Mombaça
	<i>P. maximum</i> cv. Vencedor
	<i>P. maximum</i> cv. Tanzânia
	<i>P. maximum</i> cv. Colônia
	<i>P. maximum</i> cv. Makueni
	<i>P. maximum</i> cv. Massai
Embrapa Dairy Cattle, Juiz de Fora - MG	<i>P. maximum</i> cv. Tanzânia
	<i>P. maximum</i> cv. Mombaça
	<i>P. purpureum</i> cv. Mott

The bioassay was also performed on Petri dishes divided into two partitions to verify if those endophytic fungi that inhibited the growth of phytopathogenic fungi in the first test were producing bioactive volatile compounds instead of, or in addition to, compounds secreted in the culture medium (Strobel et al., 2011).

Results

We isolated 118 fungi from 11 *P. maximum* cultivars (17 samples) and eight isolates from *P. purpureum* (one sample). From samples collected in Campo Grande, 53 isolates were obtained, with 52 obtained from Lavras and 21 from Juiz de Fora.

Most isolates belonged to the Ascomycota, with only two members of the Basidiomycota (*Meira* sp. and *Sporisorium* sp.) being isolated from *P. maximum*. The most frequent species was *Sarocladium* sp. (65 isolates), followed by *Ramichloridium* sp. (13) (Figure 1). Seventeen other taxa were isolated in frequencies varying from one to five isolates (Figure 1). Four isolates could only be identified to the order level, Capnodiales and Hypocreales, while one ascomycete isolate was only identified to the phylum level. Five species were identified among the eight endophytes isolated from *P. purpureum*, *Sarocladium* sp. (four isolates), *Acremonium* sp., *Cladosporium* sp., *Paraconiothyrium* sp., and *Sporisorium* sp. (one isolate from each taxon).

Thirty endophytic isolates from *P. maximum* and one from *P. purpureum* reduced the growth of at least one of the three of pathogenic fungi included in the antagonism bioassay, *B. maydis*, *P. expansum*, and *S. minor* (Table 2). The remaining tested plant pathogens were not inhibited by the endophytic fungi.

Seven endophytic fungi inhibited the growth of *B. maydis*, including five isolates of *Sarocladium*, with values

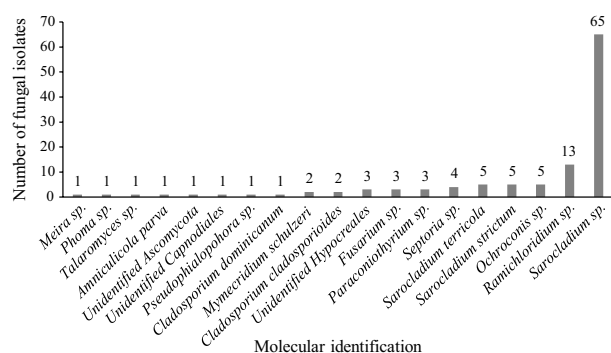


Figure 1 - Number of isolates of endophytic fungi from *P. maximum*.

ranging from 22.41 to 60.87% of inhibition (Table 2). Twenty-seven out of the 31 tested isolates showed some antagonistic activity *in vitro* and inhibited the growth of *S. minor*. These isolates belonged to five different genera, with *Sarocladium* as the most common, reflecting the dominance of this genus in our survey. Growth reduction of *S. minor* ranged from 14.28 to 80.36% (Table 2).

One isolate of *Ochroconis* sp. from *P. maximum* (Milênio cultivar) inhibited the growth of *P. expansum* by 29.41%. Two other *Ochroconis* isolates were active against *S. minor* (Table 2).

Discussion

The profile of fungal endophytes from *P. maximum* and *P. purpureum* followed the common patterns found in studies of tropical endophytes, in which only few taxa are dominant, and most are rare. Another common finding is the predominance of ascomycetes over basidiomycetes (Rodríguez et al., 2009; Marquéz et al., 2012).

Isolates of *Sarocladium* dominated the endophytic fungal assemblages in our present investigation. This genus was established in 1975 (Gams and Hawksworth, 1975); however, it was only recently delimited as a monophyletic group and shown to contain several species formerly classified in the morphogenus *Acremonium* (Summerbell et al., 2011; Giraldo et al., 2015). These findings highlight the common association of *Sarocladium* species with plants in the Poaceae family, including the rice sheath rot pathogen *Sarocladium oryzae* and the putative plant-protective endophytes *Sarocladium zaeae* (formerly *Acremonium zaeae*) from maize (Wicklow et al., 2008) and *Sarocladium implicatum* (formerly *Acremonium implicatum*) from *Brachiaria brizantha* (Kelemu et al., 2001). Two *Sarocladium* species were recently described from collections of grass endophytes, *Sarocladium spinificis* from *Spinifex littoreus*, a grass found on the Taiwanese coast (Yeh and Kirschner, 2014), and *Sarocladium brachiariae*, from *B. brizantha* grass, collected in China (Liu et al., 2017).

Reflecting the dominance of *Sarocladium* sp. among the isolated endophytes, most isolates capable of inhibiting the growth of *B. maydis* and *S. minor* belong to this genus. Chemical characterization of the isolates was not performed in this study, but the production of bioactive secondary metabolites in culture medium is highly likely. Dozens of metabolites are known from *Sarocladium/Acremonium*, including the antibiotic helvolic acid and antifungal cerulenin, produced by *S. oryzae* (Bills et al., 2004), and antimicrobial pyrrocidines A and B, produced

Table 2 - Antagonism test of *P. maximum* and *P. purpureum* endophytes against some phytopathogens

Pathogenic fungi	Identification code	GenBank Number (ITS)	Endophytic fungi	Growth reduction (%)
<i>B. maydis</i>	CG-TZ01	-	<i>Amniculicola parva</i>	22.41
	LA-VC01	KP968424	<i>Sarocladium</i> sp.	27.59
	CG-TT01	KP968452	<i>Sarocladium strictum</i>	41.38
	LA-MB01	KP968387	<i>Sarocladium</i> sp.	44.82
	LA-MB02	KP968434	<i>Sarocladium terricola</i>	55.55
	CG-ML01	-	Unidentified Hypocreales	60.87
	CG-TT02	KP968468	<i>S. strictum</i>	60.87
<i>P. expansum</i>	CG-ML02	KP968444	<i>Ochroconis</i> sp.	29.41
<i>S. minor</i>	CG-ML03	-	<i>Ramichloridium</i> sp.	14.28
	JF-MB01	KP968376	<i>Sarocladium</i> sp.	16.66
	LA-MB03	KP968369	<i>Sarocladium</i> sp.	19.04
	JF-MT01	KP968390	<i>Sarocladium</i> sp. ¹	28.57
	CG-TB01	-	<i>Ramichloridium</i> sp.	30.36
	CG-TZ01	-	<i>Amniculicola parva</i>	33.77
	CG-ML04	KP968440	<i>Ochroconis</i> sp.	38.96
	LA-MB01	KP968387	<i>Sarocladium</i> sp.	41.56
	CG-ML01	-	Unidentified Hypocreales	42.86
	CG-ML05	KP968423	<i>Ramichloridium</i> sp.	43.21
	CG-ML06	KP968427	<i>Ramichloridium</i> sp.	46.75
	CG-ML07	KP968443	<i>Ramichloridium</i> sp.	46.75
	CG-ML08	KP968457	<i>Sarocladium</i> sp.	48.21
	LA-TZ01	KP968406	<i>Sarocladium</i> sp.	50.62
	LA-MB04	KP968385	<i>Sarocladium</i> sp.	53.25
	LA-MB05	KP968374	<i>Sarocladium</i> sp.	53.25
	CG-ML09	KP968476	<i>Ochroconis</i> sp.	53.57
	CG-TT03	KP968455	<i>Sarocladium</i> sp.	55.36
	LA-MB06	KP968375	<i>Sarocladium</i> sp.	57.14
	JF-TZ01	KP968389	<i>Sarocladium</i> sp.	59.74
	CG-ML10	KP968460	<i>Ramichloridium</i> sp.	64.29
	LA-VC01	KP968424	<i>Sarocladium</i> sp.	67.53
	CG-TT04	-	<i>Sarocladium</i> sp.	67.86
	CG-TT05	KP968454	<i>Sarocladium</i> sp.	67.86
	CG-TB02	KP968463	<i>Sarocladium</i> sp.	75.00
	CG-TT06	KP968451	<i>Sarocladium</i> sp.	80.36
	CG-TT07	KP968456	<i>Sarocladium</i> sp.	80.36

¹ Isolate from *Pennisetum purpureum*.

LA - Lavras, JF - Juiz de Fora, CG - Campo Grande; MB - Mombuca; VC - Vencedor; TZ - Tanzânia; TT - T65; ML - Milênio, TB - Tobiata, MT - Mott.

by *S. zae* (Wicklów et al., 2005). The putative protective action of *S. zae* on maize ears against *F. verticillioides* and *Aspergillus flavus* was assigned to pyrrocidines, while a crude organic extract of a strain of *S. oryzae*, enriched in cerulenin content, was capable of reducing the severity of rice blast disease, caused by *Pyricularia oryzae* (Côrtes et al., 2014).

Thirteen endophytic isolates were assigned to *Ramichloridium* sp., making it the second most abundant taxon isolated in this study. *Ramichloridium* is a heterogeneous group of fungi including species with different lifestyles, such as saprobes and plant and human pathogens (Arzanlou et al., 2007). Several reports of endophytic *Ramichloridium* species are known mainly from dicotyledonous hosts, including Australian pine (*Pinus nigra*) (Jurc et al., 1996), Camellia (*Camellia*

oleifera) (Zhou et al., 2013), and Artemisia (*Artemisia annua*) (Yuan et al., 2011).

Conclusions

To our knowledge, this is the first work with endophytes in *P. maximum* and *P. purpureum* grasses in Brazil, and contributes to the knowledge of fungal species associated with forage grasses in the country. Our results demonstrate the antifungal activities of *Sarocladium* and *Ramichloridium* isolates, the most common endophytes retrieved in our survey. This work will be expanded with additional *in vitro* and *in vivo* tests and by searching for compounds that are biosynthesized by selected fungal endophytes with potentially useful applications in biotechnology.

Acknowledgments

We would like to thank the professors and researchers of the Universidade Federal de Lavras (UFLA), Embrapa Beef Cattle (Campo Grande-MS), and Embrapa Dairy Cattle (Juiz de Fora-MG), for providing the samples used in this work. The authors would like to thank the Fundação de Amparo à Pesquisa do Estado de Minas Gerais (FAPEMIG – CAG-APQ-02100-13), Coordenação de Aperfeiçoamento de Pessoal de Nível Superior (CAPES), and Conselho Nacional de Desenvolvimento Científico e Tecnológico (CNPq), for financial support and scholarships.

References

- Arzanlou, M.; Groenewald, J. Z.; Gams, W.; Braun, U.; Shin, H.-D. and Crous, P. W. 2007. Phylogenetic and morphotaxonomic revision of *Ramichloridium* and allied genera. *Studies in Mycology* 58:57-93. <https://doi.org/10.3114/sim.2007.58.03>
- Bills, G. F.; Platas, G. and Gams, W. 2004. Conspicuity of the cerulenin and helvolic acid producing '*Cephalosporium caerulens*', and the hypocrealean fungus *Sarocladium oryzae*. *Mycological Research* 108:1291-1300. <https://doi.org/10.1017/S0953756204001297>
- Braz, A. J. B. P.; Procópio, S. O.; Cargnelutti Filho, A.; Silveira, P. M.; Kliemann, H. J.; Cobucci, T. and Braz, G. B. P. 2006. Emergência de plantas daninhas em lavouras de feijão e de trigo após o cultivo de espécies de cobertura de solo. *Planta Daninha* 24:621-628. <https://doi.org/10.1590/S0100-83582006000400002>
- Côrtes, M. V.; Silva-Lobo, V. L.; Filippi, M. C.; Lima, D. and Prabhu, A. S. 2014. Potential for using crude extract of *Sarocladium oryzae* for suppression of rice blast. *Tropical Plant Pathology* 39:28-34. <https://doi.org/10.1590/S1982-56762014000100004>
- Dias, M. C. L. L. and Alves, S. J. 2008. Avaliação da viabilidade de sementes de *Panicum maximum* Jacq pelo teste de tetrazólio. *Revista Brasileira de Sementes* 30:152-158. <https://doi.org/10.1590/S0101-31222008000300020>
- Dinardo, W.; Toledo, R. E. B.; Alves, P. L. C. A. and Pitelli, R. A. 2003. Efeito da densidade de plantas de *Panicum maximum* Jacq. sobre o crescimento inicial de *Eucalyptus grandis* W. Hill ex Maiden. *Scientia Forestalis* 64:59-68.
- Fávaro, L. C. L.; Sebastianes, F. L. S. and Araújo, W. L. 2012. *Epicoccum nigrum* P16, a sugarcane endophyte, produces antifungal compounds and induces root growth. *PloS One* 7(6):e36826. Available at: <<http://journals.plos.org/plosone/article?id=10.1371/journal.pone.0036826>>. Accessed on: Dec. 10, 2014.
- Gams, W. and Hawksworth, D. L. 1975. Identity of *Acrocyldrium oryzae* Sawada and a similar fungus causing sheath-rot of rice. *Kavaka* 3:57-61.
- Ghimire, S. R.; Charlton, N. D.; Bell, J. D.; Krishnamurthy, Y. L. and Craven, K. D. 2011. Biodiversity of fungal endophyte communities inhabiting switchgrass (*Panicum virgatum* L.) growing in the native tallgrass prairie of northern Oklahoma. *Fungal Divers* 47:19-27. <https://doi.org/10.1007/s13225-010-0085-6>
- Giraldo, A.; Gené, J.; Sutton, D. A.; Madrid, H.; Hoog, G. S.; Cano, J.; Decock, C.; Crous, P. W. and Guarro, J. 2015. Phylogeny of *Sarocladium* (*Hypocreales*). *Persoonia: Molecular Phylogeny and Evolution of Fungi* 34:10-24. <https://doi.org/10.3767/003158515X685364>
- Guo, H.; Yang, H.; Mockler, T. C. and Lin, C. 1998. Regulation of flowering time by *Arabidopsis photoreceptors*. *Science* 279:1360-1363. <https://doi.org/10.1126/science.279.5355.1360>
- Jank, L.; Resende, R. M. S. and Valle, C. B. 2008. Melhoramento genético de *Panicum maximum*. p.55-87. In: Melhoramento de forrageiras tropicais. Resende, R. M. S.; Valle, C. B. and Jank, L., eds. Embrapa, Campo Grande.
- Jank, L.; Valle, C. B. and Resende, R. M. S. 2011. Breeding tropical forages. *Crop Breeding and Applied Biotechnology* 11(Special edition 1):27-34. <https://doi.org/10.1590/S1984-70332011000500005>
- Jurc, M.; Jurc, D.; Gogala, N. and Simoncic, P. 1996. Air pollution and fungal endophytes in needles of Austrian pine. *Phyton (Horn, Austria)* 36:111-114.
- Kelemu, S.; White Jr, J. F.; Muñoz, F. and Takayama, Y. 2001. An endophyte of the tropical forage grass *Brachiaria brizantha*: Isolating, identifying, and characterizing the fungus, and determining its antimycotic properties. *Canadian Journal of Microbiology* 47:55-62.
- Lédo, F. J. D. S.; Pereira, A. V.; Souza Sobrinho, F. D.; Auad, A. M.; Jank, L. and Oliveira, J. S. E. 2008. Estimativas de repetibilidade para caracteres forrageiros em *Panicum maximum*. *Ciência e Agrotecnologia* 32:1299-1303. <https://doi.org/10.1590/S1413-70542008000400040>
- Lima, E. S.; Silva, J. F. C.; Vásquez, H. M.; Andrade, E. N.; Deminicis, B. B.; Morais, J. P. G.; Costa, D. P. B. and Araújo, S. A. C. 2010. Características agrônomicas e nutritivas das principais cultivares de capim-elefante do Brasil. *Veterinária e Zootecnia* 17:324-334.
- Liu, X. B.; Guo, Z. K. and Huang, G. X. 2017. *Sarocladium brachiariae* sp. nov., an endophytic fungus isolated from *Brachiaria brizantha*. *Mycosphere* 8:827-834.
- Márquez, S. S.; Bills, G. F.; Herrero, N. and Zabalgoceazcoa, Í. 2012. Non-systemic fungal endophytes of grasses. *Fungal Ecology* 5:289-297. <https://doi.org/10.1016/j.funeco.2010.12.001>
- Naik, B. S.; Shashikala, J. and Krishnamurthy, Y. L. 2009. Study on the diversity of endophytic communities from rice (*Oryza sativa* L.) and their antagonistic activities *in vitro*. *Microbiology Research* 164:290-296. <https://doi.org/10.1016/j.micres.2006.12.003>
- Ndemah, R.; Schulthess, F.; Poehling, M. and Borgemeister, C. 2000. Species composition and seasonal dynamics of *Lepidopterous* stem borers on maize and the elephant grass, *Pennisetum purpureum* (Moench) (Poaceae), at two forest margin sites in Cameroon. *African Entomology* 8:265-272.
- Petrini, O. 1991. Fungal endophytes in tree leaves. p.179-197. In: *Microbial ecology of leaves*. Andrews, J. H. and Hirano, S. S., eds. Springer, New York.
- Porrás-Alfaro, A. and Bayman, P. 2011. Hidden fungi, emergent properties: endophytes and microbiomes. *Annual Review of Phytopathology* 49:291-315. <https://doi.org/10.1146/annurev-phyto-080508-081831>
- Queiróz, C. A.; Fernandes, C. D.; Verzignassi, J. R.; Valle, C. B.; Jank, L.; Mallmann, G. and Batista, M. V. 2014. Reação de acessos e cultivares de *Brachiaria* spp. e *Panicum maximum* à *Pratylenchus brachyurus*. *Summa Phytopathologica* 40:226-230. <https://doi.org/10.1590/0100-5405/1899>
- Rodríguez, R. J.; White Jr, J. F.; Arnold, A. E. and Redman, A. R. A. 2009. Fungal endophytes: diversity and functional roles. *New Phytologist* 182:314-330. <https://doi.org/10.1111/j.1469-8137.2009.02773.x>
- Strobel, G. A.; Dirske, E.; Sears, J. and Markworth, C. 2011. Volatile antimicrobials from *Muscodora albus*, a novel endophytic fungus. *Microbiology* 147:2943-2950. <https://doi.org/10.1099/00221287-147-11-2943>
- Summerbell, R. C.; Gueidan, C.; Schroers, H. J.; Hoog, G. S.; Starink, M.; Rosete, Y. A.; Guarro, J. and Scott, J. A. 2011. *Acremonium* phylogenetic overview and revision of *Gliomastix*, *Sarocladium*,

- and *Trichothecium*. *Studies in Mycology* 68:139-162. <https://doi.org/10.3114/sim.2011.68.06>
- Tamura, K.; Stecher, G.; Peterson, D.; Filipiński, A. and Kumar, S. 2013. MEGA6: molecular evolutionary genetics analysis version 6.0. *Molecular Biology and Evolution* 30:2725-2729. <https://doi.org/10.1093/molbev/mst197>
- Wang, D.; Possw, J. A.; Donovan, T. J.; Shannon, M. C. and Lesch, S. M. 2002. Biophysical properties and biomass production of elephant grass under saline conditions. *Journal of Arid Environments* 52:447-456. <https://doi.org/10.1006/jare.2002.1016>
- Wicklow, D. T.; Poling, S. M. and Summerbell, R. C. 2008. Occurrence of pyrrolic and dihydroresorcylide production among *Acremonium zeae* populations from maize grown in different regions. *Canadian Journal of Plant Pathology* 30:425-433. <https://doi.org/10.1080/07060660809507540>
- Wicklow, D. T.; Roth, S.; Deyrup, S. T. and Gloer, J. B. 2005. A protective endophyte of maize: *Acremonium zeae* antibiotics inhibitory to *Aspergillus flavus* and *Fusarium verticillioides*. *Mycological Research* 109:610-618. <https://doi.org/10.1017/S0953756205002820>
- Yeh, Y. H. and Kirschner, R. 2014. *Sarocladium spinificis*, a new endophytic species from the coastal grass *Spinifex littoreus* in Taiwan. *Botanical Studies* 56:1-6. <https://doi.org/10.1186/1999-3110-55-25>
- Yuan, Z. L.; Chen, Y. C. and Ma, X. J. 2011. Symbiotic fungi in roots of *Artemisia annua* with special reference to endophytic colonizers. *Plant Biosystems* 145:495-502. <https://doi.org/10.1080/011263504.2010.544863>
- Zhou, S. L.; Yan, S. Z.; Wu, Z. Y. and Chen, S. L. 2013. Detection of endophytic fungi within foliar tissues of *Camellia oleifera* based on rDNA ITS sequences. *Mycosystema* 32:819-830.