



ORIGINAL ARTICLE

Accuracy of different cutoff points of body mass index to identify overweight according to body fat values estimated by DEXA[☆]



Caroline Cristina Anzolin^a, Diego Augusto Santos Silva^b,
Edner Fernando Zanuto^a, Suziane Ungari Cayres^c, Jamile Sanches Codogno^a,
Paulo Costa Junior^a, Dalmo Roberto Lopes Machado^c,
Diego Giulliano Destro Christofaro^{a,*}

^a Universidade Estadual Paulista (UNESP), Programa de Pós-Graduação em Fisioterapia, Presidente Prudente, SP, Brazil

^b Universidade Federal de Santa Catarina (UFSC), Departamento de Educação Física, Florianópolis, SC, Brazil

^c Universidade de São Paulo (USP), Escola de Educação Física e Esporte, Ribeirão Preto, SP, Brazil

Received 28 August 2015; accepted 6 April 2016

Available online 17 August 2016

KEYWORDS

Sensitivity and specificity;
Adolescent health;
Overweight;
Obesity;
Body composition

Abstract

Objective: To evaluate the sensitivity and specificity of different cutoff points of body mass index for predicting overweight/obesity according to body fat values estimated by DEXA among Brazilian adolescents.

Methods: Cross-sectional study including 229 male adolescents aged 10–15 years, in which body adiposity and anthropometric measures were assessed. Nutritional status was classified by BMI according to cutoff points described in scientific literature.

Results: Moderate agreements were observed between body fat estimated by DEXA and cutoffs proposed by Cole et al. ($K=0.61$), Conde and Monteiro ($K=0.65$), Must et al. ($K=0.61$) and WHO ($K=0.63$). The BMI in continuous form showed good agreement with the DEXA ($ICC=0.72$). The highest sensitivity was observed for cutoff by Conde and Monteiro (0.74 [0.62, 0.84]) and the highest specificity by Cole et al. (0.98 [0.94, 0.99]). For the areas under the ROC curve of cutoff points analyzed, significant difference comparing the cutoff points by Cole et al. and Conde and Monteiro (0.0449 [0.00294, 0.0927]) was observed.

Conclusions: The cutoff proposed by Conde and Monteiro was more sensitive in identifying overweight and obesity when compared to the reference method, and the cutoff proposed by Cole et al. presented the highest specificity for such outcomes.

© 2016 Sociedade Brasileira de Pediatria. Published by Elsevier Editora Ltda. This is an open access article under the CC BY-NC-ND license (<http://creativecommons.org/licenses/by-nc-nd/4.0/>).

[☆] Please cite this article as: Anzolin CC, Silva DA, Zanuto EF, Cayres SU, Codogno JS, Costa Junior P, et al. Accuracy of different cutoff points of body mass index to identify overweight according to body fat values estimated by DEXA. J Pediatr (Rio J). 2017;93:58–63.

* Corresponding author.

E-mail: diegochristofaro@yahoo.com.br (D.G. Christofaro).

PALAVRAS-CHAVE

Sensibilidade e especificidade;
Saúde do adolescente;
Sobrepeso;
Obesidade;
Composição corporal

Precisão de diferentes pontos de corte do índice de massa corporal para identificar sobrepeso de acordo com valores de gordura corporal estimados por DEXA

Resumo

Objetivo: Avaliar a sensibilidade e a especificidade de diferentes pontos de corte do índice de massa corporal para o prognóstico de sobrepeso/obesidade de acordo com os valores de gordura corporal estimados por DEXA entre adolescentes brasileiros.

Métodos: Estudo transversal que inclui 229 adolescentes do sexo masculino com idade entre 10-15 anos, no qual foram avaliadas a adiposidade corporal e medidas antropométricas. A situação nutricional foi classificada pelo IMC de acordo com os pontos de corte descritos na literatura científica.

Resultados: Foram observadas concordâncias moderadas entre a gordura corporal estimada por DEXA e os cortes propostos por Cole et al. [$K=0,61$], Conde e Monteiro [$K=0,65$], Must et al. [$K=0,61$] e a OMS [$K=0,63$]. O IMC de forma contínua mostrou uma boa concordância com a DEXA [CCI=0,72]. A maior sensibilidade foi observada em cortes por Conde e Monteiro [0,74 (0,62, 0,84)] e a maior especificidade por Cole et al. [0,98 (0,94, 0,99)]. Nas áreas abaixo da curva de ROC de pontos de corte analisados, foi observada uma diferença significativa ao comparar os pontos de corte de Cole et al. e Conde e Monteiro [0,0449 (0,00294, 0,0927)].

Conclusões: O corte proposto por Conde e Monteiro foi mais sensível na identificação de sobrepeso e obesidade em comparação ao método de referência, e o corte proposto por Cole et al. apresentou a maior especificidade para esses resultados.

© 2016 Sociedade Brasileira de Pediatria. Publicado por Elsevier Editora Ltda. Este é um artigo Open Access sob uma licença CC BY-NC-ND (<http://creativecommons.org/licenses/by-nc-nd/4.0/>).

Introduction

Obesity is a multifactorial disease whose increasing prevalence has been the focus of numerous investigations in both high-income^{1,2} and middle-income countries³ such as Brazil.⁴ This fact is of increasing concern due to the high incidence of this disease in the pediatric population.⁵

In this context, different strategies to prevent and fight childhood obesity have been outlined in order to assess nutritional status^{6,7} from body mass scores. Various methods, such as skinfold thickness, waist-hip ratio, waist circumference, and body mass index (BMI), can be used as nutritional status indicators.⁸

These anthropometric indicators have limitations in their measurements, but still show good predictive body fat values,⁸ and findings in literature have indicated that BMI is an appropriate tool for cardiometabolic risk screening in the pediatric population,⁹ although some differences point to other assessment methods as better body fat indicators.¹⁰ BMI has become a useful tool because it is considered to be low cost and easy to apply, being widely used in epidemiological studies to diagnose excess body adiposity.¹¹

There is no consensus in literature regarding the cut-offs to stratify BMI values into underweight, overweight, and obesity in the pediatric population; different cutoff points have been developed for this purpose.¹²⁻¹⁵ This lack of consensus in cutoff points to classify the nutritional status of this population makes the comparison between studies conducted in different locations difficult, as with data from a single sample, different overweight and obesity

prevalence can be found, depending on the cutoff point used.¹⁶

One of the techniques that are more precise than anthropometric measurements to estimate body fat and other body composition components is the dual energy X-ray absorptiometry (DEXA), which consists of "scanning" the body through X-rays that, after passing through the organism, are measured by an energy-discriminating detector. DEXA performs transverse analysis of the body and is a noninvasive technique considered safe that can measure three body components: fat mass, free fat mass, and bone mass.¹⁷

This study aimed to analyze the sensitivity and specificity of different BMI cutoff points for predicting overweight/obesity according to the body fat values estimated by DEXA among Brazilian male adolescents.

Methods

This descriptive/analytical cross-sectional study was conducted in a city in the state of São Paulo. This city has 210,000 inhabitants and is located in southeastern Brazil (human development index=0.806). The sample consisted of 229 male adolescents participating in the university extension project in partnership with philanthropic institutions of that city. The following inclusion criteria were adopted: (i) informed consent form signed by parents or guardians; and (ii) age from 10 to 15 years at the assessment date. This study was approved by the Research Ethics Committee involving humans of the University responsible for this study.

Total body fat was measured by the DEXA technique using a Lunar DPX-MD device, by General Electric (General Electric Company, model Lunar DPX-MD, USA), examining the entire body, with technique applied by a single trained evaluator. Initially, after testing the scanning quality, the volunteers were positioned in supine position without the use of metal objects and shoes, and during this test, they remained still for a period of approximately 15 min. Total body fat was expressed in percentages values by the GE Medical Systems Lunar software (GE Healthcare Life Sciences, Lunar®, version 4.7., USA). Overweight and obesity classification by bone densitometry followed the recommendations of Williams et al.¹⁸ (overweight/obesity $\geq 25\%$ body fat).

Body weight was measured using an electronic scale Filizola® (modelo Filizola, Personal Line 200, Brazil) with precision of 0.1 kg and height was estimated using wooden stadiometer fixed to the wall model Sanny (Sanny®, Profissional model, Brazil), with accuracy of 0.1 cm and maximum height of 2 m. These anthropometric values were used to calculate BMI by body weight in kilograms divided by the height, squared, in meters.

Nutritional status was assessed by BMI according to the following cutoffs described in literature: (i) Must et al.,¹⁴ established for the U.S. population aged from 6 to 74 years; (ii) Conde and Monteiro,¹⁵ Brazilian classification for children and adolescents aged 2–19 years; (iii) Cole et al.,¹² a multicenter survey (Brazil, Great Britain, Hong Kong, Netherlands, Singapore, and the United States), established for the population aged 0–25 years; (iv) and the World Health Organization (WHO)¹³ for children and adolescents aged 5–19 years.

As the sample was composed of male adolescents aged 10–15 years, the exact values of the different cutoff points were: Must et al.¹⁴ (10 years = 22.60; 11 years = 23.73; 12 years = 24.89; 13 years = 25.93; 14 years = 26.93; 15 years = 27.76); Conde & Monteiro¹⁵ (10 years = 13.09; 11 years = 13.32; 12 years = 13.63; 13 years = 14.02; 14 years = 14.49; 15 years = 15.01); Cole et al.¹² (10 years = 19.84; 11 years = 20.55; 12 years = 21.22; 13 years = 21.91; 14 years = 22.62; 15 years = 23.29); and WHO¹³ (10 years = 18.60; 11 years = 19.30; 12 years = 20.10; 13 years = 20.09; 14 years = 21.9; 15 years = 22.80).

Sample characteristics were presented as mean and standard deviation. Spearman correction (r) was applied to assess the relationship between percentage body fat estimated by the reference method and the BMI, and the agreement of these values was verified by the Kappa test for categorical variables and intra-class coefficient correlation (ICC) for continuous variables. The comparison between the classification of overweight by DEXA and the cutoff points tested in the present study was performed using the McNemar test. The parameters of the ROC curve (sensitivity, specificity, area under the curve [AUC], negative predictive value [NPV], and positive predictive value [PPV]) were used to verify the ability of cutoff points in predicting overweight and obesity. The statistical significance adopted was equal to or less than 5% and the confidence interval was 95%. Statistical analysis was performed using the SPSS (SPSS Inc. Released 2007. SPSS for Windows, version 15.0, USA) and MedCalc (MedCalc®, version 11.1, Belgium).

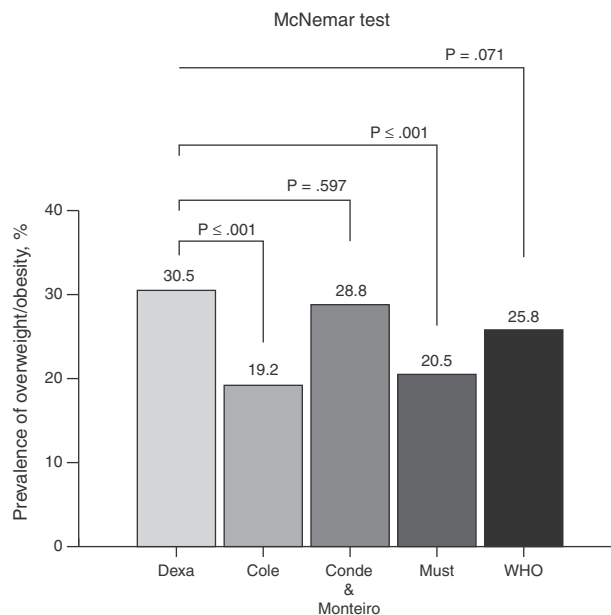


Figure 1 Comparison between the overweight classification by dual energy X-ray absorptiometry (DEXA) and body mass index (BMI) cutoff points.

Results

The sample consisted of 229 male adolescents aged 10–15 years. The mean characteristics of the sample were as follows: age, 12.31 (± 1.78) years; weight, 47.52 (± 13.77) kg; height, 155.18 (± 13.41) cm; and BMI, 19.41 (± 13.66) kg/m².

Seventy young subjects ($n = 30.5\%$) were classified as having excess body fat by DEXA. The prevalence of overweight when analyzing the various cutoff points used in this study was shown in Fig. 1. No significant differences were observed between the overweight classification by DEXA compared to the cutoff points proposed by Conde and Monteiro¹⁵ and by the WHO.¹³ Significant differences were observed using the cutoff points by Cole et al.¹² and by Must et al.¹⁴

When the relationship between body fat values identified by the reference method adopted in this study and BMI, good correlation was observed between these methods ($r = 0.78$). The agreement of measurements performed by the different cutoff points was determined by the Kappa test, and the following values were observed: $K = 0.61$ for Cole et al.¹²; $K = 0.65$ for Conde and Monteiro¹⁵; $K = 0.61$ for Must et al.¹⁴; and $K = 0.63$ for WHO.¹³ When considering the agreement between continuous variables, fat percentage by DEXA and BMI, good agreement was observed (ICC = 0.72).

Table 1 shows information on the area under the curve, sensitivity, specificity, PPV, and NPV. The highest sensitivity among the proposed criteria was verified for the cutoff of Conde and Monteiro¹⁵ and the highest specificity for the cutoff of Cole et al.,¹² as well as the highest PPV. The highest NPV was observed for the cutoff of Conde and Monteiro.¹⁵

The ability of BMI has also been analyzed in this study (as a continuous variable) predicting overweight estimated by DEXA. High values of AUC, sensitivity, and specificity were observed, as shown in Fig. 2.

Table 1 Diagnostic properties of different cutoff points of body mass index to identify overweight according to body fat values estimated by dual energy X-ray absorptiometry (DEXA).

	AUC (95% CI)	Sensitivity (95% CI)	Specificity (95% CI)	PPV (95% CI)	NPV (95% CI)
Cole et al. ¹²	0.78 (0.72; 0.83)	0.58 (0.46; 0.70)	0.98 (0.94; 0.99)	0.93 (0.81; 0.98)	0.84 (0.78; 0.89)
Conde and Monteiro ¹⁵	0.83 (0.77; 0.87)	0.74 (0.62; 0.84)	0.91 (0.85; 0.95)	0.78 (0.67; 0.87)	0.88 (0.83; 0.93)
Must et al. ¹⁴	0.78 (0.73; 0.84)	0.60 (0.48; 0.72)	0.96 (0.92; 0.99)	0.89 (0.76; 0.96)	0.85 (0.78; 0.89)
WHO ¹³	0.81 (0.76; 0.86)	0.70 (0.57; 0.80)	0.93 (0.88; 0.96)	0.83 (0.71; 0.91)	0.87 (0.62; 0.75)

AUC, area under the curve; 95% CI, 95% confidence interval; PPV, positive predictive value; NPV, negative predictive value; WHO, World Health Organization.

Table 2 Comparison between ROC curves of different cutoff points.

	Difference between AUC (95% CI)	p-Value
Cole et al. ¹² versus Conde and Monteiro ¹⁵	0.0449 (0.00294; 0.0927)	0.006*
Cole et al. ¹² versus Must et al. ¹⁴	0.000917 (0.0253; 0.0271)	0.945
Cole et al. ¹² versus WHO ¹³	0.0358 (0.00549; 0.0771)	0.089
Conde and Monteiro ¹⁵ versus Must et al. ¹⁴	0.0440 (0.00161; 0.0896)	0.059
Conde and Monteiro ¹⁵ versus WHO ¹³	0.00908 (0.0248; 0.0430)	0.599
Must et al. ¹⁴ versus WHO ¹³	0.0349 (0.00450; 0.0743)	0.083

ROC, receiver operating characteristic, AUC, area under the curve; WHO, World Health Organization.

* $p \leq 0.05$.

Table 2 shows the comparisons between different areas under the ROC curves and their respective confidence intervals of different cutoff points analyzed in this study. Statistically significant differences were observed when the

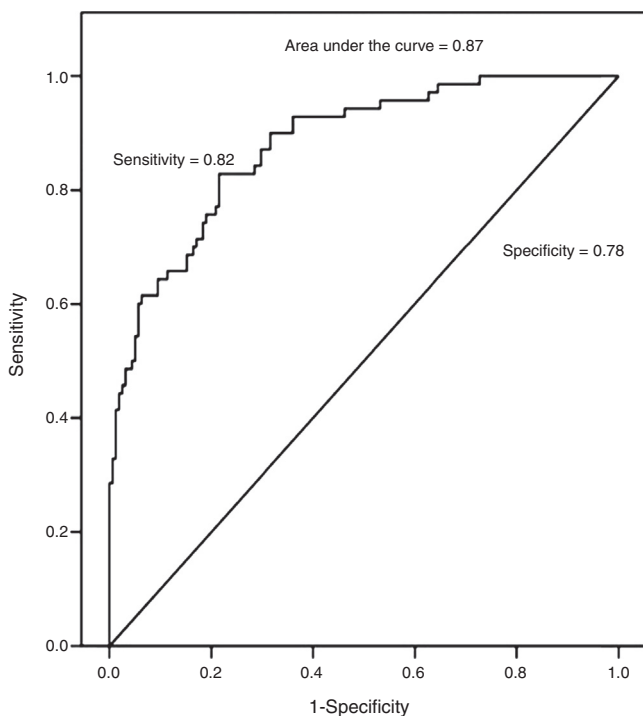
cutoff points of Cole et al.¹² and Conde and Monteiro¹⁵ were compared.

Discussion

The present findings indicate that the cutoff established by Conde and Monteiro¹⁵ showed higher AUC and sensitivity, which helps identifying more efficiently the presence of overweight and obesity among children and adolescents. Conversely, Cole et al.¹² showed higher specificity when compared to the other outcomes.

In this study, the results showed that the cutoff points proposed by Conde and Monteiro¹⁵ are more suitable, as they provide higher AUC, NPV, and a prognosis of greater sensitivity to excess adiposity in the assessed population. These results have already been disclosed in the literature.¹⁹ This result probably occurred due to the fact that these cutoff points proposed by Conde and Monteiro¹⁵ have only been applied to Brazilian adolescents when compared to international standards,¹²⁻¹⁴ as the cutoff points used for the assessment of excess body weight built with features of other nations in the prevalence of overweight is greater, and may underestimate or be less sensitive when applied to populations in which the prevalence of overweight is lower.²⁰

The overweight indicators assessed by DEXA showed positive correlation with the cutoff points analyzed. Other studies also found similar positive correlations,^{21,22} which suggests that all these indexes are able to identify the nutritional status of children and adolescents. Moreover, with regard to the values proposed by Must et al.¹⁴ and by Cole et al.,¹² it was observed that such multicenter surveys were conducted in countries where the prevalence of

**Figure 2** Receiver operating characteristic (ROC) curve for body mass index (BMI) ability to predict overweight estimated by dual energy X-ray absorptiometry (DEXA).

overweight/obesity is high,²³ which may explain the lower sensitivity levels and the tendency of such indexes to underestimate overweight and obesity in the Brazilian population.

The cutoff point proposed by the WHO¹³ shows large amplitude when compared with the other references, which may have provided lower sensitivity to the prognosis of overweight and obesity. Similar findings were reported by Veiga et al.²⁴ However, when the ROC curves of cutoff points were observed, it was observed that those by Conde and Monteiro¹⁵ showed more sensitive critical values in the identification of excess body fat compared to those by Cole et al.¹² This occurred because the model was built based on data obtained from young Brazilians a few years ago, when obesity rates were not similar to the worrisome current reality.²⁵ Another factor is that the values recommended for each age group by Conde and Monteiro¹⁵ were lower than the other cutoff points analyzed in this study.

Although the sensitivity and specificity results were significant, when analyzing the misclassification of cutoff points compared with DEXA, statistically significant differences were observed in the cutoff points by Cole et al.¹² and by Must et al.,¹⁴ may note that there may be erroneous ratings on the body fat index in certain populations, so the cutoff points established by Conde and Monteiro¹⁵ and WHO,¹³ are less likely to body fat misclassification. Moreover Neovius et al.²⁶ examined the misclassification of some cutoffs in Swedish adolescents and found a better system of excess fat classification through the cutoff points of Cole et al.¹² and WHO.¹³ The difference between the findings may be related the characteristics analyzed population.

To use the different types of cutoff points, healthcare professionals should be aware of the strengths and limitations of each cutoff point. For example, among those analyzed in the present study, that by Conde and Monteiro¹⁵ was more sensitive, but also has the greatest chance of detecting false positives, *i.e.*, to classify as overweight individuals who are not. Unlike more specific cutoff points, those by Cole et al.,¹² by Must et al.,¹⁴ and by the WHO¹³ may classify some adolescents who are overweight as normal weight.

Furthermore, a limitation to be considered is that these different cutoff points should be tested against a number of cardiovascular risk factors in adolescents such as hypertension, diabetes, cholesterol, and triglycerides to assess their efficiency in detecting cardiovascular risks.

As Neouvis et al.,²⁶ the present study also tested the accuracy, sensitivity and specificity of BMI on a continuous basis in predicting overweight observable good AUC (Fig. 2). These results show that the higher the BMI, the greater are the chances of the subject presenting a high fat percentage based on BMI analysis *versus* body fat obtained by DEXA. Thus, the use of BMI by healthcare professionals should be encouraged, as it correlates well with body fat. Moreover, BMI is a simple and inexpensive technique.

The following limitations of this study should be highlighted: (i) the cross-sectional design, which did not allow for the establishment of a causal relationship between outcomes; (ii) the sample, which consisted of male volunteers only; (iii) the use of DEXA as reference method, as previous results have shown that this technique tends to overestimate the percentage of body fat in individuals with high body fat levels and to underestimate it in those with low

fat levels²⁷; thus, for adolescents with extreme BMI values, DEXA results may not be as accurate. Nonetheless, this technique is more accurate than anthropometric measurements to estimate body fat. Further studies should be carried out using more accurate methods to estimate body fat and to verify the possible relationship between cutoff points.

A practical application for obesity screening in the young population could be the use of different cutoff points simultaneously; for example, in the case of this study, the most sensitive and specific, because if an adolescent is classified as overweight by two cutoff points, he/she should be closely monitored. From these assessments, health promotion could be better prepared in the school environment. Referral of young overweight subjects assessed at different cutoff points to a Basic Healthcare Unit could be carried out with the purpose of performing routine tests to prevent cardiovascular problems typically associated with overweight.

Thus, it can be concluded that the cutoff points proposed by Conde and Monteiro¹⁵ was more sensitive in identifying overweight and obesity when compared to the reference method, and the cutoff points by Cole et al.¹² showed higher specificity for such outcomes.

Conflicts of interest

The authors declare no conflicts of interest.

References

1. Koebnick C, Smith N, Huang K, Martinez MP, Clancy HA, Kushi LH. The prevalence of obesity and obesity-related health conditions in a large, multiethnic cohort of young adults in California. *Ann Epidemiol.* 2012;22:609–16.
2. Kwon Y, Oh S, Park S, Park Y. Association between household income and overweight of Korean and American children: trends and differences. *Nutr Res.* 2010;30:470–6.
3. Ntandou G, Delisle H, Agueh V, Fayomi B. Abdominal obesity explains the positive rural–urban gradient in the prevalence of the metabolic syndrome in Benin, West Africa. *Nutr Res.* 2009;29:180–9.
4. Silveira JA, Colugnati FA, Cocetti M, Taddei JA. Secular trends and factors associated with overweight among Brazilian preschool children: PNSN-1989, PNDS-1996, and 2006/07. *J Pediatr (Rio J).* 2014;90:258–66.
5. Sardinha LB, Santos R, Vale S, Silva AM, Ferreira JP, Raimundo AM, et al. Prevalence of overweight and obesity among Portuguese youth: a study in a representative sample of 10–18-year-old children and adolescents. *Int J Pediatr Obes.* 2011;6:e124–8.
6. Lindsay RS, Hanson RL, Roumain J, Ravussin E, Knowler WC, Tataranni PA. Body mass index as a measure of adiposity in children and adolescents: relationship to adiposity by dual energy X-ray absorptiometry and to cardiovascular risk factors. *J Clin Endocrinol Metab.* 2001;86:4061–7.
7. Neovius M, Linne Y, Rossner S. BMI, waist-circumference and waist-hip-ratio as diagnostic tests for fatness in adolescents. *Int J Obes (Lond).* 2005;29:163–9.
8. Gracia-Marco L, Moreno LA, Ruiz JR, Ortega FB, de Moraes AC, Gottrand F, et al. Body composition indices and single and clustered cardiovascular disease risk factors in adolescents: providing clinical-based cut-points. *Prog Cardiovasc Dis.* 2016;58:555–64.

9. Weber DR, Leonard MB, Shults J, Zemel BS. A comparison of fat and lean body mass index to BMI for the identification of metabolic syndrome in children and adolescents. *J Clin Endocrinol Metab.* 2014;99:3208–16.
10. Welborn TA, Dhaliwal SS. Preferred clinical measures of central obesity for predicting mortality. *Eur J Clin Nutr.* 2007;61:1373–9.
11. Rezende FA, Rosado LE, Franceschini SC, Rosado GP, Ribeiro RC. Aplicabilidade do índice de massa corporal na avaliação da gordura corporal. *Rev Bras Med Esporte.* 2010;16:90–4.
12. Cole TJ, Bellizzi MC, Flegal KM, Dietz WH. Establishing a standard definition for child overweight and obesity worldwide: international survey. *BMJ.* 2000;320:1240–3.
13. de Onis M, Onyango AW, Borghi E, Siyam A, Nishida C, Siekmann J. Development of a WHO growth reference for school-aged children and adolescents. *Bull World Health Organ.* 2007;85:660–7.
14. Must A, Dallal GE, Dietz WH. Reference data for obesity: 85th and 95th percentiles of body mass index (wt/ht²) and triceps skinfold thickness. *Am J Clin Nutr.* 1991;53:839–46.
15. Conde WL, Monteiro CA. Body mass index cutoff points for evaluation of nutritional status in Brazilian children and adolescents. *J Pediatr (Rio J).* 2006;82:266–72.
16. Pelegrini A, Silva DA, Gaya AC, Petroski EL. Comparison of three criteria for overweight and obesity classification in Brazilian adolescents. *Nutr J.* 2013;12:5.
17. Sant'Anna MS, Priore SE, Franceschini SC. Methods of body composition evaluation in children. *Rev Paul Pediatr.* 2009;27:315–21.
18. Williams DP, Going SB, Lohman TG, Harsha DW, Srinivasan SR, Webber LS, et al. Body fatness and risk for elevated blood pressure, total cholesterol, and serum lipoprotein ratios in children and adolescents. *Am J Public Health.* 1992;82:358–63.
19. Silva HG, Chiara VL, Barros ME, Rego AL, Ferreira A, Pitasi BA, et al. Diagnosing the nutritional status of schoolchildren: a comparison between Brazilian and international criteria. *J Pediatr (Rio J).* 2008;84:550–5.
20. Lin WY, Lee LT, Chen CY, Lo H, Hsia HH, Liu IL, et al. Optimal cut-off values for obesity: using simple anthropometric indices to predict cardiovascular risk factors in Taiwan. *Int J Obes Relat Metab Disord.* 2002;26:1232–8.
21. Vieira AC, Alvarez MM, de Marins VM, Sichieri R, da Veiga GV. Accuracy of different body mass index reference values to predict body fat in adolescents. *Cad Saude Publica.* 2006;22:1681–90.
22. Vitolo MR, Campagnolo PD, Barros ME, Gama CM, Ancona Lopez F. Evaluation of two classifications for overweight among Brazilian adolescents. *Rev Saude Publica.* 2007;41:653–6.
23. Falkner B, Cossrow ND. Prevalence of metabolic syndrome and obesity-associated hypertension in the racial ethnic minorities of the United States. *Curr Hypertens Rep.* 2014;16:449.
24. Veiga GV, Dias PC, dos Anjos LA. A comparison of distribution curves of body mass index from Brazil and the United States for assessing overweight and obesity in Brazilian adolescents. *Rev Panam Salud Publica.* 2001;10:79–85.
25. Wang Y, Monteiro C, Popkin BM. Trends of obesity and underweight in older children and adolescents in the United States, Brazil, China, and Russia. *Am J Clin Nutr.* 2002;75:971–7.
26. Neovius MG, Linne YM, Barkeling BS, Rossner SO. Sensitivity and specificity of classification systems for fatness in adolescents. *Am J Clin Nutr.* 2004;80:597–603.
27. Sopher AB, Thornton JC, Wang J, Pierson RN Jr, Heymsfield SB, Horlick M. Measurement of percentage of body fat in 411 children and adolescents: a comparison of dual-energy X-ray absorptiometry with a four-compartment model. *Pediatrics.* 2004;113:1285–90.