

## Images in Infectious Diseases

## Acute disseminated encephalomyelitis following coronavirus disease vaccination

Ronaldo Gonçalves Pereira<sup>[1],[2]</sup> , Rafael Teixeira de Hollanda Lima<sup>[1]</sup>   
and Bruno Niemeyer de Freitas Ribeiro<sup>[1],[2],[3]</sup> 

[1]. 3D Diagnóstico / Hospital Rede Casa, Departamento de Radiologia, Rio de Janeiro, RJ, Brasil.

[2]. Labs A+/Grupo Fleury, Rio de Janeiro, RJ, Brasil.

[3]. Instituto Estadual do Cérebro Paulo Niemeyer, Departamento de Radiologia, Rio de Janeiro, RJ, Brasil.

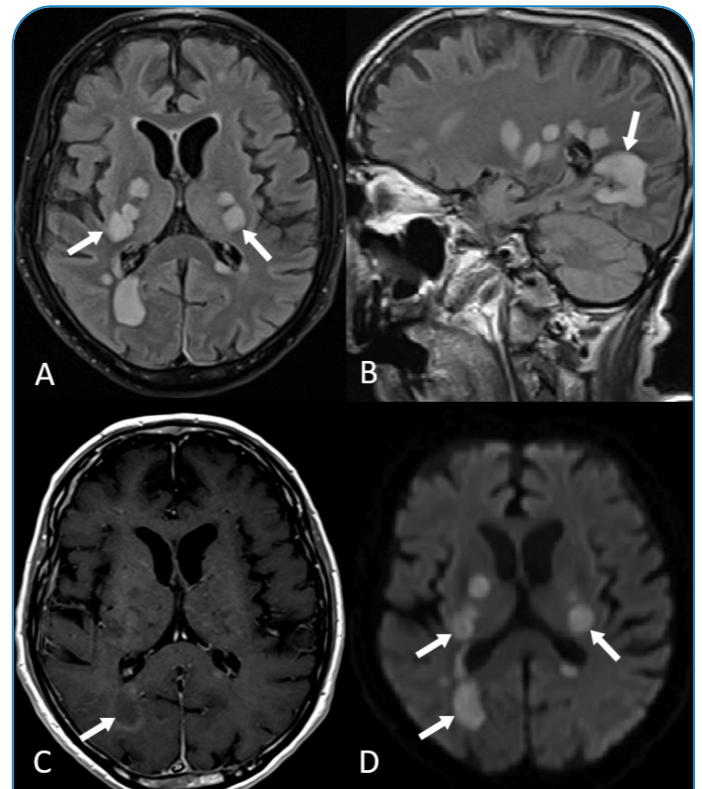
A 76-year-old man presented to our hospital with bilateral progressive amaurosis and consciousness disorder 4 weeks after he had received the Sinovac coronavirus disease (COVID-19) vaccine. He had no notable medical history, mildly elevated levels of cerebrospinal fluid protein, and a normal blood cell count. Brain magnetic resonance imaging findings revealed multiple white-matter lesions bilaterally (**Figure 1A-D**). The suspected diagnosis was acute disseminated encephalomyelitis. This disease usually develops following viral infection or vaccination and is characterized by monophasic acute inflammation and demyelination of the white matter, typically 1–2 weeks after exposure. Few reports have described the occurrence of acute disseminated encephalomyelitis following COVID-19 vaccination<sup>1,2</sup>.

## ACKNOWLEDGMENTS

We offer our deepest thanks to the institutions that provided technical support for the development and implementation of this study.

## REFERENCES

1. Gulay OK, Buse CA, Cagan R, Mustafa KD. Acute disseminated encephalomyelitis-like presentation after an inactivated coronavirus vaccine. *Acta Neurol Belg.* 2021;121(4):1089-91. Available from: <https://doi.org/10.1007/s13760-021-01699-x>
2. Liming C, Lijie R. Acute disseminated encephalomyelitis after severe acute respiratory syndrome coronavirus 2 vaccination: a case report. *Acta Neurol Belg.* 2021;1:1-3. Available from: <https://doi.org/10.1007/s13760-021-01608-2>



**FIGURE 1:** Fluid-attenuated inversion recovery magnetic resonance imaging (MRI) findings in the (A) axial and (B) sagittal views showing multiple hyperintense white matter lesions and basal nuclei bilaterally (arrows). (C) Contrast-enhanced T1-weighted MRI findings showing an incomplete arc of contrast enhancement (arrows). (D) MRI diffusion-weighted imaging showing hyperintense lesions (arrows).

**Corresponding author:** Bruno Niemeyer de Freitas Ribeiro. **e-mail:** [bruno.niemeyer@hotmail.com](mailto:bruno.niemeyer@hotmail.com)

**Authors' contribution:** RPG: Elaboration of the manuscript; RTHL: Elaboration of the manuscript; BNFR: Manuscript revision.

**Conflict of Interest:** The authors declare that there is no conflict of interest.

**Financial Support:** None.

**Received** 8 April 2022 | **Accepted** 19 May 2022