

Cytotoxicity of *Marchantia convoluta* leaf extracts to human liver and lung cancer cells

J.B. Xiao^{1,2}, X.Q. Chen¹,
Y.W. Zhang², X.Y. Jiang¹
and M. Xu^{2,3}

¹College of Chemistry and Chemical Engineering, ²Research Institute for Molecular Pharmacology and Therapeutics, Central South University, Changsha, China
³Department of Radiation Oncology, Memorial Sloan-Kettering Cancer Center, New York, NY, USA

Abstract

The cytotoxicity of three extracts (petroleum ether, ethyl acetate and n-butanol) from a plant used in folk medicine, *Marchantia convoluta*, to human non-small cell lung carcinoma (H1299) and liver carcinoma (HepG2) cell lines was tested. After 72-h incubation of lung and liver cancer cell cultures with varying concentrations of extracts (15 to 200 µg/mL), cytotoxicity was determined by the 3-(4,5-dimethylthiazol-2-yl)-2,5-diphenyltetrazolium bromide assay and reported in terms of cell viability. The extracts that showed a significant cytotoxicity were subjected to gas chromatography-mass spectrometry analysis to identify the components. The ethyl acetate, but not the petroleum ether or n-butanol extract, had a significant cytotoxicity against lung and liver carcinoma cells with IC₅₀ values of 100 and 30 µg/mL, respectively. A high concentration of ethyl acetate extract (100 µg/mL) rapidly reduced the number of H1299 cells. At lower concentrations of ethyl acetate extract (15, 30, and 40 µg/mL), the numbers of HepG2 cells started to decrease markedly. Gas chromatography-mass spectrometry analysis of the ethyl acetate extract revealed the presence of several compounds such as phytol (23.42%), 1,2,4-tripropylbenzene (13.09%), 9-cedranone (12.75%), ledene oxide (7.22%), caryophyllene (1.82%), and caryophyllene oxide (1.15%). HPLC analysis result showed that there were no flavonoids in ethyl acetate extract, but flavonoids are abundant in n-butanol extract. Further studies are needed regarding the identification, toxicity, and mechanism of action of active compounds.

Key words

- *Marchantia convoluta* extract
- Cytotoxicity assay
- HepG2 and H1299 carcinoma cell lines
- Phytol
- Caryophyllene oxide

Correspondence

X.Q. Chen
College of Chemistry and Chemical
Engineering
Central South University
Changsha
China
E-mail: jianbo_xiai@yahoo.com.cn

Received July 29, 2005
Accepted March 22, 2006

Introduction

Marchantiaceae plants are well-known traditional Chinese medicinal herbs extensively used to treat skin tumefaction, to protect the liver and to treat hepatitis, being also used as antipyretics (1-3). Large numbers of Marchantiaceae plants occur in Guangxi

Zhuang Autonomous District such as *Marchantia polymorpha*, *M. convoluta* and *M. paleacea*. Many studies on the chemical constituents and bioactivities of *M. polymorpha* have been reported (4-13). These species grow together and are difficult to distinguish from one another because of their genetic similarity. *M. convoluta* is only found in

China (14) and is quite rare.

The major identified constituents of *M. convoluta* are flavonoids, triterpenoids and steroids (15-18). The flavonoids of *M. convoluta* consist mainly of quercetin, luteolin, apigenin, and their *O*- and *C*-glycosides (15-17). A high dosage of flavonoids from *M. convoluta* (20 and 40 µg/mL) can significantly reduce the activity of alanine aminotransferase and aspartate aminotransferase in the serum of mice with acute hepatic injury caused by CCl₄ and increase the contents of total protein and alkaline phosphatase, as well as inhibit the auricle tympanitis of mice caused by dimethylbenzene (1). Flavonoids from *M. convoluta* strongly inhibit colibacillus, typhoid bacillus, *Staphylococcus aureus*, *Bacillus enteritidis*, hemolytic streptococci type B, and *Diplococcus pneumoniae* and have antibiotic, anti-inflammatory and diuretic effects on mice (1).

In the present study, the effects of extracts of *M. convoluta* on human carcinoma cells were investigated. Non-small cell lung carcinoma cell line H1299 and the liver cancer cell line HepG2 were used. Some of the chemical constituents of petroleum ether and ethyl acetate extracts were also identified by gas chromatography-mass spectrometry (GC-MS).

Material and Methods

General

Ethanol, petroleum ether, ethyl acetate, and n-butanol, all of analytical reagent grade, were purchased from Tianjin Damao Chemical Reagent Factory (Dongli District, Tianjin, China).

Plant material

The leaves of *M. convoluta* were collected in Shangling City, Guangxi Zhuang Autonomous District, China, in August 2003. The specimen (No. 20041364) was identified by Zhou Zi-jing at the Biology Depart-

ment of Guangxi Chinese Medical University. The leaves were washed with water, dried in the shade for several days, and powdered.

Preparation of plant extracts

The powdered plant material (500 g) was extracted three times with 3000 mL ethanol-water (1:1, v/v). The accumulated alcoholic extract was concentrated to dryness under reduced pressure and extracted three times with petroleum ether (100 mL). The residue was extracted three times with ethyl acetate (100 mL). Then, the residue was extracted three times with n-butanol (100 mL). All extracts were then filtered and concentrated to dryness under reduced pressure. The yields of the petroleum ether extract, ethyl acetate extract and n-butanol extract were 4.61, 7.38, and 5.29% (w/w), respectively. All extracts were dissolved in 95% ethanol to form stock solutions that were sterilized by filtration (0.2 µm) before testing.

In vitro assay for cytotoxic activity

Cell lines. Human non-small cell lung carcinoma cell line H1299 and human liver carcinoma cell line HepG2 were used. Cells were established and kindly provided by Dr. Xu, Memorial Sloan-Kettering Cancer Center, New York) and were cultured in RPMI 1640 medium supplement with 10% heated fetal bovine serum, 2 mM L-glutamine, 50 IU/mL penicillin, and 50 µg/mL streptomycin and maintained at 37°C in a 5% CO₂ atmosphere with 95% humidity.

3-(4,5-Dimethylthiazol-2-yl)-2,5-diphenyltetrazolium bromide (MTT) assay. For the assay, cells were washed with phosphate-buffered saline (PBS) free of magnesium and calcium. The PBS was decanted, the cells were detached with 0.025% trypsin-EDTA (Sigma, St. Louis, MO, USA) and PBS was added to a volume of 50 mL. The cell pellet obtained by centrifugation was

suspended in 10 mL of medium to prepare a single cell suspension. The density of viable cells was determined by Trypan blue exclusion in a hemocytometer and the preparation was then diluted with medium to yield previously determined optimal plating densities for H1299 and HepG2. The HepG2 and H1299 cells were seeded on 96-well plates at a final concentration of 5×10^4 cells per 100 μL medium per well 24 h before the assay. The cell suspensions were then incubated at 37°C to permit cell attachment. After 24 h the cells were treated with the extracts. Each extract was initially dissolved in ethanol and 500 $\mu\text{g}/\text{mL}$ of each extract was tested initially against both cancer cell lines. On the basis of the results obtained, extracts were considered to be active when they produced less than 50% survival after an exposure time of 72 h. The active extracts were further diluted in medium to produce 7 concentrations of 0, 15, 30, 40, 50, 100, 200 $\mu\text{g}/\text{mL}$ of each extract and 100 $\mu\text{L}/\text{well}$ of each concentration was added to the plates in six replicates. At the end of the exposure time the medium was removed and MTT assays were then performed using the cell titer kitTM (Promega Corp., Madison, WI, USA). Twenty milliliters MTT (5 mg/mL) in PBS was incubated with cells on a 96-well plate for 2 h at 37°C. Subsequently, the medium containing MTT was removed, and 100 mL acidified isopropanol (0.04 mol/L HCl) was added. The absorbance of each sample was measured at 570 nm using a microplate reader (Bio-Rad Laboratories, Orlando, FL, USA, model 3550). The data were normalized (A570 nm) and the mean absorbance was plotted against drug concentration. Three replicate plates were used to determine the cytotoxicity of each extract.

Gas chromatography-mass spectrometry

GC-MS analysis was performed using an Agilent (Palo Alto, CA, USA) system consisting of a model 6890 gas chromatograph,

a model 5973 mass selective detector, and an Agilent ChemStation data system. The GC column was an HP-5 ms fused silica capillary column (30 m x 0.25 mm, 0.25 μm). The carrier gas was helium at a flow rate of 1.0 mL/min. Oven temperature was 60°C for 5 min, and then increased to 250°C at a rate of 5°C/min. Injector and detector temperatures were 250 and 265°C, respectively. One microliter of diluted solution was injected into the GC/MS apparatus with a split ratio of 1/60. The ionization energy was 70 eV with a scan time of 1 s and mass range of 40-540 amu. The percentages of the compounds were calculated by the area normalization method without considering response factors. The components of the oil were identified by comparison of their mass spectra with those of a computer library (NIST database/ChemStation data system) (19).

High-performance liquid chromatography

The chemical constituents of three extracts were investigated by high-performance liquid chromatography (HPLC) performed according to the literature (17). HPLC analysis was performed using equipment from Shimadzu (Shimadzu, Kyoto, Japan): a Shimadzu LC-2010A liquid chromatograph, a Shimadzu SPD-M10A Diode Array Detector and a Shimadzu Class-vp V6.12 SP4 offline processing system. Flavonoids were analyzed using a Kromasil RP-C18 column (250 x 4.6 mm ID, 5 μm ; Hanbon Science & Technology Co., Ltd., Huaiyin, China). The mobile phase consisted of a mixture, methanol-acetonitrile-acetic acid-phosphoric acid-H₂O (200:100:10:10:200, v/v) and the solution was degassed by suction-filtration through a nylon membrane. The detecting wavelength was 352 nm. The flow rate was 0.60 mL/min and the sensitivity was set at 0.05 AUFS. The quantity volume of injecting sample was 6.0 μL . The HPLC system was operated at ambient temperature ($28 \pm 1^\circ\text{C}$).

Statistical analysis

Data are reported as the mean \pm SD for at least three determinations. Statistical analysis was performed using the Student *t*-test, with the level of significance set at $P < 0.05$.

Results

IC₅₀

The inhibitory effects of the extracts were determined by exposure of the human non-small cell lung carcinoma cell line H1299 and the human hepatocellular carcinoma cell line HepG2 to increasing concentrations of all extracts in a stepwise manner for 72 h. The concentration of each extract which reduced cell survival by 50% (IC₅₀) was deter-

Table 1. Sensitivity of H1299 and HepG2 cell extracts of *Marchantia convoluta*.

Extract	IC ₅₀ (μg/mL)	
	H1299	HepG2
Petroleum ether	>500	>500
Ethyl acetate	100	30
n-butanol	>200	>200

Cells ($5 \times 10^5 \text{ mL}^{-1}$) were cultured with various amounts of each extract at 37°C and 5% CO₂ for 72 h. Cytotoxicity was measured with the MTT assay. IC₅₀ = extract concentration causing a 50% decrease in the survival curve.

mined from cell survival curves and the results are presented in Table 1.

As indicated in Table 1, treatment of H1299 and HepG2 cells with ethyl acetate extract resulted in loss of cell viability, whereas both cell lines were more resistant to the petroleum ether and n-butanol extracts, as shown by the respective IC₅₀ of H1299 and HepG2 cells.

Effect of the ethyl acetate extract on cell proliferation

The effect of all extracts on different cell lines was studied by measuring cell numbers by the MTT assay after treatment of the cultures with each extract for 72 h. The treatment of all cell lines with the ethyl acetate extract clearly reduced the cell numbers (Figure 1A,B), whereas the petroleum ether and n-butanol extracts did not have an evident inhibitory effect on cell proliferation.

The effect of extracts on cell viability was evaluated by determining the percentage of MTT reduction upon incubation of HepG2 and H1299 cells with increasing extract concentrations in the range 15-200 μg/mL. As shown in Figure 1A,B, the ethyl acetate extract produced a dose-dependent reduction in cell viability. Figure 1A shows that a high concentration of ethyl acetate extract (100 μg/mL) rapidly reduced the number of H1299

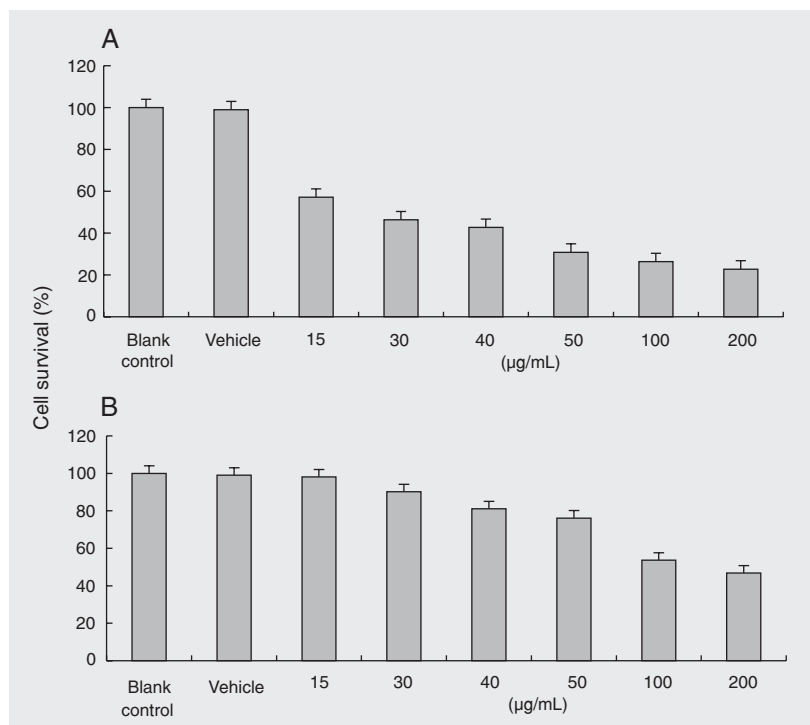


Figure 1. Inhibitory effect of the ethyl acetate extract on H1299 (A) and HepG2 (B). The HepG2 and H1299 cells were seeded on 96-well plates at a final concentration of 5×10^4 cells per 100 μL medium per well at 37°C to permit cell attachment. After 24 h the cells were treated with the extracts for 72 h. Then, the medium was removed and 20 mL MTT (5 mg/mL) in PBS was incubated with cells on a 96-well plate for 2 h at 37°C. Subsequently, the medium containing MTT was removed, and 100 mL of acidified isopropanol (0.04 mol/L HCl) was added. The absorbance of each sample was measured at 570 nm.

cells. At lower concentrations of the extract (15, 30, and 40 $\mu\text{g/mL}$), the numbers of HepG2 cells started to decrease markedly (Figure 1B), whereas no H1299 cell inhibition was observed at the concentration of 15 $\mu\text{g/mL}$. These results suggest that the ethyl acetate extract has an obvious toxic effect on HepG2 cells at low concentrations but inhibits H1299 cells only at higher concentration. The inhibition of proliferation and induction of cell death observed occurred in a concentration- and dose-dependent manner.

The petroleum ether and n-butanol extracts of *M. convoluta* had no effect on the human non-small cell lung carcinoma cell line H1299 ($\text{IC}_{50} > 500$ and 200 $\mu\text{g/mL}$, re-

spectively) and human liver carcinoma cell line HepG2 ($\text{IC}_{50} > 500$ and 200 $\mu\text{g/mL}$, respectively) at any concentration.

Gas chromatography-mass spectrometry

Extracts of different compositions can be obtained by different extraction methods applied to natural products (20-24). The GC-MS profile of the ethyl acetate extract is shown in Figure 2. The separation obtained by GC was excellent. The GC-MS analytical results for the ethyl acetate extract are shown in Table 2.

As shown in Figure 2, a total of eleven compounds accounting for 70.04% of the

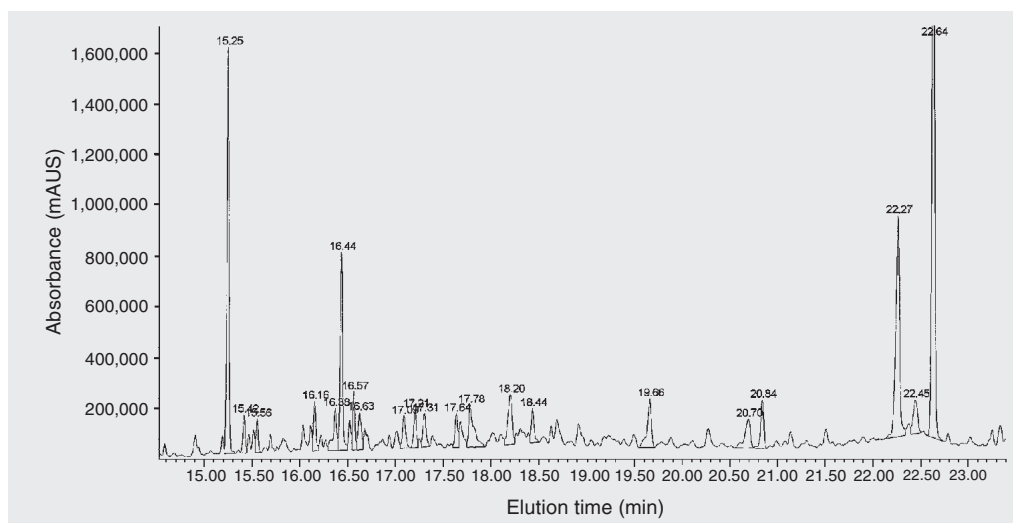


Figure 2. Gas chromatography-mass spectrometry profile of the ethyl acetate extract.

Table 2. Composition of the ethyl acetate extract obtained by GC-MS.

Compound	RT/min	Reliability to MS standard	Relative content
Caryophyllene	13.49	99%	1.82%
9-Cedranone	15.25	90%	12.75%
Diepi-alpha-cedrene epoxide	15.42	91%	1.37%
Caryophyllene oxide	15.56	93%	1.15%
Eudesma-4(14),11-diene	16.38	80%	2.27%
Ledene oxide	16.44	90%	7.22%
Bi-1-cycloocten-1-yl	17.21	88%	1.46%
14-Methylpentadecanoic acid	19.66	98%	3.07%
Tetradecanoic acid, methyl ester	20.84	96%	2.42%
1,2,4-Tripropylbenzene	22.27	84%	13.09%
Phytol	22.64	87%	23.42%

RT = Retention time; Reliability to MS standard = match degree (%) of mass spectrum to the standard compounds; Relative content = % of total absorbance of all peaks.

total area were identified in the ethyl acetate extract, which largely consisted of terpenes and their oxo-derivatives. Phytol (23.42%), 1,2,4-tripropylbenzene (13.09%), 9-cedranone (12.75%), and ledene oxide (7.22%) were the major compounds identified in the ethyl acetate extract of *M. convoluta*, with smaller amounts of caryophyllene (1.82%), and caryophyllene oxide (1.15%).

HPLC analysis

HPLC analysis result showed that there were no flavonoids in ethyl acetate extract and petroleum ether extract. As reported in a previous study by our group (17), there were many flavonoids in the n-butanol extract. Some chemical constituents of these extracts could not be identified by GC-MS or HPLC.

Discussion

Hepatocellular carcinoma is one of the most common malignancies worldwide. The high incidence of liver cancer has been attributed to factors such as persistent infection with hepatitis virus and contact with hepatocarcinogens such as nitrosamines and aflatoxins (25). Because of the multifocal nature of liver carcinoma, most cancer patients are considered non-resectable at presentation. In these patients, chemotherapy is the only choice of treatment. Unfortunately, development of drug resistance in the tumor after treatment is always a major obstacle to the successful management of liver cancer (26).

Non-small cell lung cancers commonly develop resistance to radiation and chemotherapy, and they often cannot be treated by surgical resection. Since current treatment modalities are inadequate, novel therapies are necessary to reduce the effects of the increasing incidence of pulmonary neoplasms (27). Thus, developing new therapeutic agents that can overcome drug resistance is an urgent need for cancer patients.

The leading cause of death in China is

cancer, followed by stroke. Conventional western cancer therapies, such as chemotherapy, radiation, and surgery, have been increasingly used since the 1960's in Chinese hospitals. However, the side effects of these treatments have been often highly debilitating both in western countries and in China. The management of cancer with traditional Chinese medicine not only can effectively kill cancer cells, but also has no toxic or side effects on the normal cells of the body. It has no side effect in terms of bone marrow immunosuppression, and has no serious influence on the digestive system. Thus, it could be called "green therapy".

Caryophyllene has shown anti-inflammatory activity in several animal models, including carrageenan- and PGE-induced hind paw edema, which does not require the integrity of adrenal glands (28). β -caryophyllene seems to have gastric cytoprotective effects in rats (29). Ghelardini et al. (30) found that β -caryophyllene has a strong local anesthetic action that appears to be strictly dependent on its chemical structure since the oxidized derivative β -caryophyllene oxide is devoid of this effect. Caryophyllene oxide, an oxygenated terpenoid, well known as a preservative of food, drugs and cosmetics, has been tested *in vitro* as an antifungal agent against dermatophytes (31). Caryophyllene oxide can reduce rested-state contractions in the presence of isoprenaline which are thought to be due to the Ca^{2+} current $[\text{I}(\text{Ca})]$ and can inhibit the $\text{I}(\text{Ca})$ in single cells from the guinea-pig ventricle in a concentration-dependent and reversible manner. β -caryophyllene oxide strongly inhibited the potassium current (32) and α -caryophyllene oxide showed strong antimarial (33) as well as anti-inflammatory activity (34). Caryophyllene oxide has also shown *in vitro* anti-platelet aggregation activity (35). Sibanda et al. (36) have found caryophyllene oxide to exhibit a modest cytotoxic activity (IC_{50} values ranging from 32.48 to 77.51 $\mu\text{g}/\text{mL}$) on a panel of human

tumor cell lines, consistent with an earlier report by Kubo et al. (37). But ethyl acetate extract inhibits liver carcinoma cells with IC₅₀ value of 30 µg/mL. So ethyl acetate extract is more potent than caryophyllene oxide.

Caryophyllene oxide, therefore, may be responsible for the cytotoxicity of the ethyl acetate extract against human non-small cell lung carcinoma cell line H1299 and human liver carcinoma cell line HepG2.

The biological activities reported in the

literature for the major components of the ethyl acetate extract of *M. convoluta*, i.e., phytol, caryophyllene and caryophyllene oxide, are consistent with the traditional uses of this plant to treat skin tumefaction, to protect the liver and to treat hepatitis B, and as an anticancer drug. The present study indicates that the ethyl acetate extract possesses greater cytotoxicity against HepG2 cells than H1299 cells. Further studies are needed regarding the identification of active compounds and their mechanism of action.

References

- Xiao JB, Jiang XY, Chen XQ. Antibacterial, anti-inflammatory and diuretic effect of flavonoids from *Marchantia convoluta*. *Afr J Tradit, Complement Altern Med* 2005; 2: 244-252.
- Jiangsu Institute of Botany. *Xinghua Bencao Gangyo*. Shanghai: Shanghai Science and Technology Press (in Chinese), 1990.
- Zou DF, Zhu H, Xiao JB, Cao H, Zhou CS. Identification of UASLG for *M. polymorpha*, *M. convoluta* and *M. paleacea*. *Nat Prod Res Develop* 2005; 17: 463-464.
- Asakawa Y. Recent advances in phytochemistry of bryophytes-acetogenins, terpenoids and bis(bibenzyl)s from selected Japanese, Taiwanese, New Zealand, Argentinean and European liverworts. *Phytochemistry* 2001; 56: 297-312.
- Matsuo A, Nakayama N, Nakayama M. Enantiomeric type sesquiterphenoid of the liverwort *Marchantia polymorpha*. *Phytochemistry* 1985; 24: 777-781.
- Asakawa Y, Tori M, Masuya T, Frahm JP. Ent-sesquiterphenoids and cyclic bis(bibenzyls) from the German liverwort *Marchantia polymorpha*. *Phytochemistry* 1990; 29: 1577-1584.
- Asakawa Y, Okada K, Perold GW. Distribution of cyclic bis(bibenzyls) in the South African liverwort *Marchantia polymorpha*. *Phytochemistry* 1988; 27: 161-163.
- Asakawa Y, Tori M, Takikawa K, Krishnamurthy HG, Kar SK. Cyclic bis(bibenzyls) and related compound from the liverwort *Marchantia polymorpha*. *Phytochemistry* 1987; 26: 1811-1816.
- Rieck A, Bülow N, Fricke C, Saritas Y, König WA. (-)-1(10), 11-eremophiladien -9β-ol from the liverwort *Marchantia polymorpha*. *Phytochemistry* 1997; 45: 195-197.
- Markham KR, Porter LJ. Flavonoids of the liverwort *Marchantia polymorpha*. *Phytochemistry* 1974; 13: 1937-1942.
- Markham KR, Ryan KG, Bloor SJ, Mitchell KA. An increase in the luteolin: apigenin ratio in *Marchantia polymorpha* on UV-B enhancement. *Phytochemistry* 1998; 48: 791-794.
- Adam KP, Becker H. Phenanthrenes and other phenolics from *in vitro* cultures of *Marchantia polymorpha*. *Phytochemistry* 1994; 35: 139-143.
- Saruwatari M, Takio S, Ono K. Low temperature-induced accumulation of eicosapentaenoic acids in *Marchantia polymorpha* cells. *Phytochemistry* 1999; 52: 367-372.
- Tian CY, Wu JQ, Liu SX, Hu RL. Characteristics of the bryoflora of Gutianshan nature reserve in Kaihua country, Zhejiang province and comparisons of the bryoflora of the nature reserve and several other nearby mountain areas. *Wuhan Bot Res* 1999; 17: 179-182 (in Chinese).
- Zhu H, Xiao JB, Zou DF, Fu P, Zhou CS. Isolation, purification and identification of apigenin-7-O-D-glucuronide in *Marchantia convoluta* with silica column chromatography, RP-HPLC and LC-ESI-MS. *Nat Prod Res Develop* 2005; 17: 38-41.
- Xiao JB, Cao H, Xiang HY, Zhou CS. Determination of the content of flavonoids in *Marchantia convoluta*. *Nat Prod Res Develop* 2005; 17: 186-190.
- Chen XQ, Xiao JB. RP-HPLC-DAD determination of flavonoids: separation of quercetin, luteolin and apigenin in *Marchantia convoluta*. *Iran J Pharmac Res* 2005; 4: 175-181.
- Zhu H, Zhou CS, Huang HB, Wang XX. Studies on the lipophilic constituents from the leafy body of *Marchantia convoluta*. *Guihaia* 2003; 23: 571-573.
- Adams RP. *Identification of essential oil components by gas chromatography/mass spectroscopy*. Carol Stream: Allured Publishing; 2001.
- Pourmortazavi SM, Sefidkon F, Hosseini SG. Supercritical carbon dioxide extraction of essential oils from *Perovskia atriplicifolia* Benth. *J Agric Food Chem* 2003; 51: 5414-5419.
- Stashenko EE, Puertas MA, Combariza M. Volatile secondary metabolites from *Spilanthes americana* obtained by simultaneous steam distillation-solvent extraction and supercritical fluid extraction. *J Chromatogr A* 1996; 752: 223-232.
- Anklam E, Berg H, Mathiasson L, Sharman M, Ulberth F. Supercritical fluid extraction (SFE) in food analysis: a review. *Food Addit Contam* 1998; 15: 729-750.
- Kohler M, Haerdi W, Christen P, Veuthey JL. Extraction of artemisinin and artemisinic acid from *Artemisia annua* L. using supercritical carbon dioxide. *J Chromatogr A* 1997; 785: 353-360.
- Chester TL, Pinkston JD, Raynie DE. Supercritical fluid chromatography and extraction. *Anal Chem* 1994; 66: 106R-130R.
- Henry SH, Bosch FX, Bowers JC. Aflatoxin, hepatitis and worldwide liver cancer risks. *Adv Exp Med Biol* 2002; 504: 229-233.

26. Gottesman MM. Mechanisms of cancer drug resistance. *Annu Rev Med* 2002; 53: 615-627.
27. Kim PK, Park SY, Koty PP, Hua Y, Luketich JD, Billiar TR. Fas-associating death domain protein overexpression induces apoptosis in lung cancer cells. *J Thorac Cardiovasc Surg* 2003; 125: 1336-1342.
28. Martin S, Padilla E, Ocete MA, Galvez J, Jimenez J, Zarzuelo A. Anti-inflammatory activity of the essential oil of *Bupleurum fruticosens*. *Planta Med* 1993; 59: 533-536.
29. Tambe Y, Tsujiuchi H, Honda G, Ikeshiro Y, Tanaka S. Gastric cytoprotection of the non-steroidal anti-inflammatory sesquiterpene, beta-caryophyllene. *Planta Med* 1996; 62: 469-470.
30. Ghelardini C, Galeotti N, Di Cesare ML, Mazzanti G, Bartolini A. Local anaesthetic activity of beta-caryophyllene. *Farmaco* 2001; 56: 387-389.
31. Yang D, Michel L, Chaumont JP, Millet-Clerc J. Use of caryophyllene oxide as an antifungal agent in an *in vitro* experimental model of onychomycosis. *Mycopathologia* 1999; 148: 79-82.
32. Sensch O, Vierling W, Brandt W, Reiter M. Effects of inhibition of calcium and potassium currents in guinea-pig cardiac contraction: comparison of beta-caryophyllene oxide, eugenol, and nifedipine. *Br J Pharmacol* 2000; 131: 1089-1096.
33. Thebtaranonth C, Thebtaranonth Y, Wanauppathamkul S, Yuthavong Y. Antimalarial sesquiterpenes from tubers of *Cyperus rotundus*: structure of 10,12-peroxy-calamenene, a sesquiterpene endoperoxide. *Phytochemistry* 1995; 40: 125-128.
34. Shimizu M, Shogawa H, Matsuzawa T, Yonezawa S, Hayashi T, Arisawa M, et al. Anti-inflammatory constituents of topically applied crude drugs. IV. Constituents and anti-inflammatory effect of Paraguayan crude drug "alhucema" (*Lavandula latifolia* Vill.). *Chem Pharm Bull* 1990; 38: 2283-2284.
35. Lin WY, Kuo YH, Chang YL, Teng CM, Wang EC, Ishikawa T, et al. Anti-platelet aggregation and chemical constituents from the rhizome of *Gynura japonica*. *Planta Med* 2003; 69: 757-764.
36. Sibanda S, Chigwada G, Poole M, Gwebu ET, Noletto JA, Schmidt JM, et al. Composition and bioactivity of the leaf essential oil of *Heteropyxis dehniae* from Zimbabwe. *J Ethnopharmacol* 2004; 92: 107-111.
37. Kubo I, Chaudhuri SK, Kubo Y, Sanchez Y, Ogura T, Saito T, et al. Cytotoxic and antioxidative sesquiterpenoids from *Heterotheca inuloides*. *Planta Med* 1996; 62: 427-430.