

## The string of pearls pattern in dermoscopy of a chest papule ☆☆☆



Dear Editor,

A 49-year-old woman presented with a 3-year history of an asymptomatic red dome-shaped papule on her left chest. The lesion slowly enlarged (Fig. 1). There was no relevant medical history and family history. Dermoscopy showed glomerular and dotted vessels with “string of pearls” pattern distribution, and a collarette of scale surrounding (Fig. 2). Excisional biopsy of the lesion with histopathological examination showed a sharply demarcated psoriasiform epidermal hyperplasia composed of slightly enlarged clear keratinocytes and basal cells with pale-staining cytoplasm, dilated blood vessels in the dermal papillae as well as perivascular mixed inflammatory infiltration (Fig. 3). We diagnosed this patient as having clear cell acanthoma (CCA), without recurrence for 4 months after excision.

CCA, or Degos acanthoma, is a rare clinical entity first described by Degos in 1962.<sup>1</sup> The etiology of CCA is still not clearly known. It is traditionally considered to be a form of benign epidermal neoplasia. Meanwhile, there are speculations that CCA may be an inflammatory reactive dermatosis or localized psoriasis.<sup>2</sup> CCA generally arises on the lower extremities and is characterized by an asymptomatic, red-brown, dome-shaped, solitary papule or nodule often covered by a thin collarette of scale. Additionally, giant, pedunculated, multiple, cystic and pigmented patterns may be seen in CCA. The histopathological features include a well-demarcated area of psoriasiform acanthosis with keratinocytes with pale staining cytoplasm, intercellular edema, parakeratotic microabscesses and edematous papillary dermis as well as the superficial capillaries and veins increased. CCA must be differentiated from actinic or seborrhoeic keratoses, basal cell carcinoma, squamous cell carcinoma, pyogenic granulomas, clear cell hidradenoma and amelanotic melanoma.

Under dermoscopy, CCA has a unique appearance that is helpful to improve diagnostic accuracy, characterized by red dots, globules, and glomerular vessels arranged in linear or serpiginous patterns as well as a collarette of scale surrounding.<sup>3</sup> The dermoscopic feature of “string of pearls” corresponds to the histopathology of CCA on transverse sections that indicates uniformly sized dermal islands with a string-like distribution and abundant dilated capillaries.<sup>4</sup> However, Espinosa recently reported that the dermoscopic feature of “string of pearls” pattern was also found in seborrhoeic keratosis and lichen-planus-like keratosis and suggested that other epidermal tumors, especially having the similar pathological pattern, could also show this dermoscopic pattern.<sup>5</sup> Hence, Biopsy is still not avoided in the diagnosis of CCA.



Figure 1 Solitary papule on her chest.

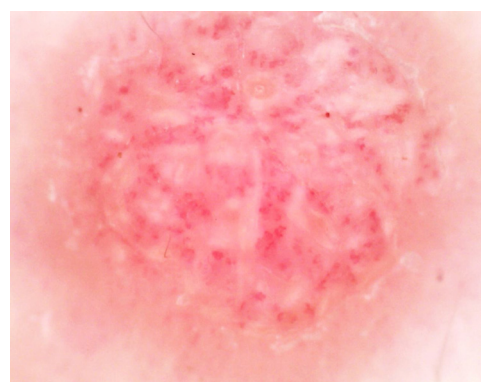


Figure 2 Dermoscopy showing glomerular and dotted vessels with “string of pearls” pattern distribution and a collarette of scale surrounding.

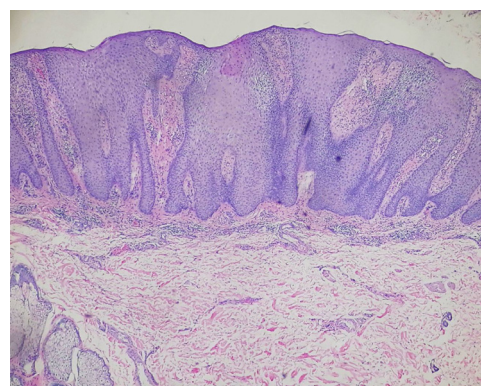


Figure 3 Histopathology showing a sharply demarcated psoriasiform epidermal hyperplasia composed of clear keratinocytes and basal cells with pale-staining cytoplasm, dilated blood vessels in the dermal papillae as well as perivascular mixed inflammatory infiltration (Hematoxylin & eosin, ×40).

☆ How to cite this article: Zhang L-W, Wang W-J, Li C-H, Chen T. The string of pearls pattern in dermoscopy of a chest papule. *An Bras Dermatol.* 2020;95:389–90.

☆☆ Study conducted at the Department of Dermatovenereology, Chengdu Second People’s Hospital, Chengdu, Sichuan, China.

### Financial support

None declared.

## Authors' contributions

Li-wen Zhang: Conception and planning of the study; obtaining, analysis, and interpretation of the data; critical review of the literature.

Wen-Ju Wang: Concepção e planejamento do estudo.

Cong-Hui Li: Critical review of the literature.

Tao Chen: Critical review of the manuscript.





## Conflicts of interest

None declared.

## References

1. Degos R, Delort J, Civatte J, Poiars Baptista A. Epidermal tumor with an unusual appearance: clear cell acanthoma. *Ann Dermatol Syphiligr (Paris)*. 1962;89:361–71.
2. Zedek DC, Langel DJ, White WL. Clear-cell acanthoma versus acanthosis: a psoriasiform reaction pattern lacking tricholemmal differentiation. *Am J Dermatopathol*. 2007;29:378–84.
3. Lyons G, Chamberlain AJ, Kelly JW. Dermoscopic features of clear cell acanthoma: five new cases and a review of existing published cases. *Australas J Dermatol*. 2015;56:206–11.

4. Miyake T, Minagawa A, Koga H, Fukuzawa M, Okuyama R. Histopathological correlation to the dermoscopic feature of "string of pearls" in clear cell acanthoma. *Eur J Dermatol*. 2014;24:498–9.
5. Espinosa AED, Akay BN, Gonzalez-Ramirez RA. String of pearls pattern": report of three cases of non clear-cell acanthoma. *An Bras Dermatol*. 2017;92 Suppl. 1:142–4.

Li-Wen Zhang \*,<sup>1</sup>, Wen-Ju Wang <sup>1</sup>, Cong-Hui Li , Tao Chen 

Department of Dermatovenereology, Chengdu Second People's Hospital, Chengdu, Sichuan, China

\*Corresponding author.

E-mail: [zhleven@126.com](mailto:zhleven@126.com) (L. Zhang).

<sup>1</sup> Contributed equally to this work.

Received 30 March 2019; accepted 14 June 2019

Available online 20 March 2020

<https://doi.org/10.1016/j.abd.2019.06.015>

0365-0596/ © 2020 Sociedade Brasileira de Dermatologia.

Published by Elsevier España, S.L.U. This is an open access article under the CC BY license

(<http://creativecommons.org/licenses/by/4.0/>).

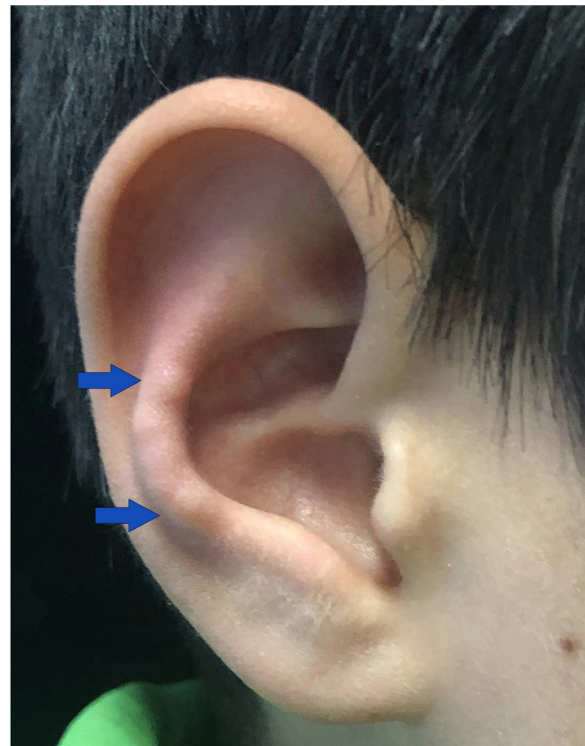
## Pediatric chondrodermatitis nodularis chronica helicis☆☆☆



Dear Editor,

A 9-year-old Chinese boy presented with a 2-month-history of multiple nodules affecting the right antihelix. The nodules gradually increased and were mildly painful. He was otherwise healthy. No local factors and prior skin lesions, including the history of injury to the site, were found. There was no significant medical or family history. Physical examination found four skin-colored nodules 4–5 mm on the right antihelix with a pearl necklace arrangement (Fig. 1). One of the nodules was excised and histopathologic features are shown in fig. 2. It showed irregular epidermal hyperplasia, dermal vascular endothelial cell swelling and vascular stenosis with moderate perivascular lymphocytic infiltration, and laminated fibrosis with granulomatous infiltration of epithelioid cells and lymphocytes. Blood tests including complete blood count, blood clotting index, liver and renal function, and anti-nuclear antibodies were all normal. We diagnosed this patient as having Chondrodermatitis Nodularis Chronica Helicis (CNCH) and started treatment with protective padding placed around the external ear and topical 0.5% halometasone cream. Two months later, the nodules were smaller and the pain disappeared.

CNCH is characterized by a benign painful erythematous nodule with a central crust, fixed to the cartilage of the helix or antihelix of the external ear. The right-sided lesions are more common than left-sided ones. CNCH most commonly



**Figure 1** Four skin-colored nodules on the right antihelix with a pearl necklace arrangement.

☆ How to cite this article: Zhang L-W, Li L, Li C-H, Wang W-J. Pediatric chondrodermatitis nodularis chronica helicis. *An Bras Dermatol*. 2020;95:391–3.

☆☆ Study conducted at the Department of Dermatovenereology, Chengdu Second People's Hospital, Chengdu, Sichuan, China.