



# REVISTA BRASILEIRA DE REUMATOLOGIA

www.reumatologia.com.br



## Original article

# Prevalence of ischemic heart disease and associated factors in patients with rheumatoid arthritis in Southern Brazil



Rafael Kmiliauskis Santos Gomes<sup>a,\*</sup>, Ana Carolina Albers<sup>b</sup>, Ana Isadora Pianowski Salussoglia<sup>b</sup>, Ana Maria Bazzan<sup>b</sup>, Luana Cristina Schreiner<sup>b</sup>, Mateus Oliveira Vieira<sup>b</sup>, Patrícia Giovana da Silva<sup>b</sup>, Patrícia Helena Machado<sup>b</sup>, Cynthia Mara da Silva<sup>b</sup>, Mauro Marcelo Mattos<sup>c</sup>, Moacyr Roberto Cuce Nobre<sup>d</sup>

<sup>a</sup> Centro de Especialidades dos Municípios de Blumenau e Brusque, Blumenau, SC, Brazil

<sup>b</sup> Fundação Regional de Blumenau, Faculdade de Medicina, Blumenau, SC, Brazil

<sup>c</sup> Fundação Regional de Blumenau, Departamento de Sistemas e Computação, Blumenau, SC, Brazil

<sup>d</sup> Universidade de São Paulo, Faculdade de Medicina, Unidade de Epidemiologia Clínica, São Paulo, SP, Brazil

## ARTICLE INFO

### Article history:

Received 31 March 2016

Accepted 8 November 2016

Available online 8 February 2017

### Keywords:

Rheumatoid arthritis

Cardiovascular disease

Acute myocardial infarction

Prevalence

## ABSTRACT

**Objective:** To estimate the prevalence of ischemic heart disease and associated factors in patients with rheumatoid arthritis.

**Methods:** A cross-sectional study using the American College of Rheumatology diagnostic criteria in order to select patients seen at primary or secondary health care units in Blumenau, Santa Catarina, Southern Brazil, in 2014. The presence of ischemic heart disease was defined as an acute myocardial infarction with percutaneous coronary intervention or coronary artery bypass graft surgery that has occurred after diagnosis. Fischer's exact test, Wald's linear trend test, and multivariate logistic regression analysis were used to test the associations.

**Results:** Among 296 patients (83.1% female) with a mean age of 56.6 years and a mean rheumatoid arthritis duration of 11.3 years, 13 reported having acute myocardial infarction requiring a percutaneous or surgical reperfusion procedure, a prevalence of 4.4% (95% CI 2.0–6.7). Diabetes Mellitus (odds ratio [OR] 4.9 [95% CI 1.6–13.8]) and disease duration >10 years (OR 8.2 [95% CI 1.8–39.7]) were the only factors associated with an ischemic disease that remained in the final model, after the multivariate analysis.

**Conclusion:** The prevalence of acute myocardial infarction was similar to that observed in other studies. Among the traditional risk factors, Diabetes Mellitus, and among the factors related to rheumatoid arthritis, disease duration, were the variables associated with comorbidity.

© 2017 Elsevier Editora Ltda. This is an open access article under the CC BY-NC-ND license (<http://creativecommons.org/licenses/by-nc-nd/4.0/>).

\* Corresponding author.

E-mail: [gomesmed2002@ibest.com.br](mailto:gomesmed2002@ibest.com.br) (R.K. Gomes).

<http://dx.doi.org/10.1016/j.rbre.2017.01.006>

2255-5021/© 2017 Elsevier Editora Ltda. This is an open access article under the CC BY-NC-ND license (<http://creativecommons.org/licenses/by-nc-nd/4.0/>).

## Prevalência de doença isquêmica cardíaca e fatores associados em pacientes com artrite reumatoide no Sul do Brasil

### R E S U M O

#### Palavras-chave:

Artrite reumatoide  
Doença cardiovascular  
Infarto agudo do miocárdio  
Prevalência

**Objetivo:** Estimar a prevalência da doença isquêmica cardíaca e os fatores associados em pacientes com artrite reumatoide.

**Métodos:** Estudo transversal que usou o critério diagnóstico do Colégio Americano de Reumatologia para selecionar pacientes atendidos nas unidades de saúde da atenção primária ou secundária em Blumenau, Santa Catarina, sul do Brasil, em 2014. A presença de doença cardíaca isquêmica foi definida com infarto agudo do miocárdio com intervenção coronariana percutânea ou cirurgia de revascularização do miocárdio que tenha ocorrido depois do diagnóstico. Para testar as associações usou-se o teste exato de Fischer, o teste de tendência linear de Wald e a análise de regressão logística multivariada.

**Resultados:** Entre 296 pacientes, 83,1% de mulheres, com média de 56,6 anos, tempo médio de artrite reumatoide de 11,3 anos, 13 relatam ter tido infarto agudo do miocárdio que necessitou de procedimento de reperfusão percutânea ou cirúrgica, prevalência de 4,4% (IC 95% 2,0-6,7). O diabetes mellitus (razão de chance de 4,9 [IC 95% 1,6-13,8]) e o tempo de doença maior do que 10 anos (razão de chance de 8,2 [IC 95% 1,8-39,7]) foram os únicos fatores associados com a doença isquêmica que permaneceram no modelo final após análise multivariada.

**Conclusão:** A prevalência de infarto agudo do miocárdio foi semelhante com a observada em outros estudos. Entre os fatores de risco tradicionais e entre os fatores relacionados à artrite reumatoide, o diabetes mellitus e o tempo de doença foram as variáveis associadas à comorbidade.

© 2017 Elsevier Editora Ltda. Este é um artigo Open Access sob uma licença CC BY-NC-ND (<http://creativecommons.org/licenses/by-nc-nd/4.0/>).

## Introduction

Rheumatoid arthritis (RA) is a systemic inflammatory autoimmune disease characterized by the involvement of the synovial membrane of peripheral joints leading to destruction and functional limitation.<sup>1</sup> The prevalence of RA varies from 0.24 to 1% of the adult population, with a predominance of women and a higher incidence in the 30–50-year age group.<sup>2–4</sup> In Brazil, two studies were published. The first study shows a variation from 0.2 to 1%, depending on the region of this country,<sup>5</sup> and the other establishes a prevalence of 0.46%.<sup>6</sup>

Studies point to an increased risk of cardiovascular disease (CVD) in patients with RA compared to the general population.<sup>7–9</sup> CVD exerts a great impact and represents an important morbidity in patients with RA, and acute myocardial infarction (MI) is considered to be the most common event.<sup>9,10</sup> Studies conducted in different countries indicate that the prevalence can vary from 1 to 17%.<sup>10–12</sup>

The greatest number of cardiac ischemic events in RA patients is not entirely explained by the presence of traditional risk factors alone.<sup>10</sup> A study in Sweden with two cohorts of RA patients demonstrated that there is no increase in the occurrence of ischemic heart disease prior to the rheumatologic diagnosis.<sup>13</sup> On the other hand, soon after the onset of the disease<sup>14</sup> and along its course,<sup>15</sup> RA plays an important role in the onset of MI, above all in patients with an accumulation of severity markers.<sup>10</sup> Thus, RA was considered as an independent risk factor for the occurrence of coronary artery disease.<sup>16,17</sup>

Despite the important advances in diagnosis and available treatments, there remains a high CVD morbidity.<sup>10</sup> This is due to the combination of the characteristics of a chronic inflammatory disease, which are predisposing factors to the development of comorbidities; of the drugs used in treatment, for example, glucocorticoids<sup>11</sup>; to an increased prevalence of traditional risk factors over the duration of disease<sup>18,19</sup>; and to the persistent activity of the disease in its most aggressive periods.<sup>7</sup>

The present study aimed to estimate the self-reported prevalence of coronary ischemic events and to identify the possible associated factors in patients with RA in Blumenau, Santa Catarina, Southern Brazil, in 2014.

## Materials and methods

This is a cross-sectional, population-based study conducted between July 2014 and January 2015 with men and women aged 20 years and older with rheumatoid arthritis according to the American College of Rheumatology (1987) criteria, residents in the municipality of Blumenau, Southern Brazil. In 2010, Blumenau had a municipal human development index (IDH-M) = 0.806, ranking 25th among all Brazilian municipalities.<sup>20</sup> According to the national census conducted also in the year of 2010, the number of people pertaining to the age group of this study corresponded to 221,839 inhabitants, equivalent to 71.7% of the total population of the municipality.<sup>21</sup>

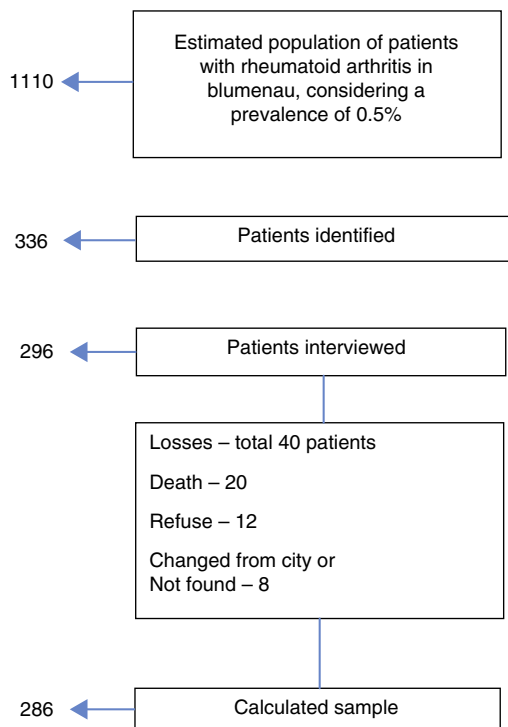


Fig. 1 – Diagram.

To calculate the sample size, the formula for estimating the prevalence for a simple random sample was applied. The following parameters were considered: prevalence of RA = 0.5% (1110 patients), prevalence of exposure and unknown outcome = 50%, sampling error = 5%, and confidence level of 95%. The sample size calculated was of 286 individuals. The sample collection process was carried out by reviewing medical records in the basic health units and in the medical specialty outpatient clinic, as well as by identifying patients in the waiting room at the high-cost drug dispensing pharmacy from the city (Fig. 1).

Households visited at least twice without the interviewer meeting the person, including a weekend visit and another nighttime visit, or in the case of a change of address, or even in cases of refusal on two occasions, were considered as “losses”.

The team was composed of 8 medical students from the medical school of the Fundação Universidade Regional de Blumenau (FURB), previously trained to carry out a pre-structured interview and, if necessary, to conduct the interview by telephone in another occasion, and also by a local professor supervisor. Quality control was performed in 20% of the respondents when they were interviewed for a second time, through the application of a short questionnaire.

The dependent variable was the presence of a positive history of a coronary ischemic event after a diagnosis of rheumatoid arthritis, defined by an acute myocardial infarction diagnosed by the physician and requiring cardiac catheterization for angioplasty or stent implantation, or a coronary artery bypass graft surgery.

The independent variables were defined as (a) demographic variables: gender, age in completed years, categorized in a group of 20–59 years for adults and of 60 years or

more for the elderly; (b) traditional cardiovascular risk factors reported in the interview: previous diagnosis of hypertension, diabetes mellitus or dyslipidemia, or use of medications for such diseases; previous or current smoking; prior and current practice of leisure-time physical activity; positive family history for heart attack or cardiac catheterization at any age (mother, father, brothers or sisters); dichotomous categorization; current body mass index – BMI ( $\text{kg}/\text{m}^2$ ) according to weight and height and categorized according to the World Health Organization recommendations (low/normal weight  $\leq 24.9 \text{ kg}/\text{m}^2$ , overweight  $25\text{--}29.9 \text{ kg}/\text{m}^2$ , and obesity  $\geq 30 \text{ kg}/\text{m}^2$ ); and (c) RA-related variables: disease duration in years and presence of rheumatoid factor, both categorized respectively between 0–10 or 11 or more years of disease, and rheumatoid factor  $<60$  (negative or low titer) or  $>60$  (high titers).

The data were entered in a system developed for this study with their output in the Excel<sup>®</sup> table format; subsequently, the final file was exported to the Stata 10.0 program (Stata Corp., College Station, United States). The variables of interest were analyzed for their distributions; for this end, mean, standard deviation and median were used for continuous variables, and frequency and percentage were used for categorical variables. To test the association between history of a coronary ischemic event and independent variables, the Fisher's exact test and, where appropriate, the Wald's linear trend test were used. After that, a multivariate logistic regression analysis was performed, aiming to verify the association of the factors studied with the dependent variable, with estimates of gross and adjusted odds ratios (OR) and of the respective 95% confidence intervals.

For the entry into the final multivariate model, all the variables with a  $p$ -value  $< 0.20$  in the univariate analysis were taken into account. Those variables that maintained a  $p$ -value  $\leq 0.05$  or which were adjusted to the final model remained in the multivariate regression model. For the inclusion of the variables in the logistic regression model, the investigators opted sequentially by the inclusion, in the first place, of the demographic variables; then, the traditional risk factors for coronary artery disease, and finally the variables related to the disease were included. This research was submitted to the Research Ethics Committee of the Universidade de São Paulo (USP) and FURB (protocols 339/13 and 133/12, respectively), having obtained approval. All participants in this study signed an informed consent form.

## Results

On the whole, 296 RA patients were interviewed. The majority were women (83.1%) and adults (60.8%), with a mean age of  $56.6 \pm 11.7$  years, ranging from 25 to 91 years, and with disease duration of  $11.3 \pm 9.2$  years, ranging from 1 to 51 years. The mean BMI was  $26.4 \pm 4.7 \text{ kg}/\text{m}^2$ . The prevalence of MI with a percutaneous or surgical reperfusion procedure was 4.4% (95% CI 2.0–6.7). In the descriptive analysis, the most prevalent demographic variables were female gender and age  $\geq 60$  years. The majority of cases were related to the presence of traditional risk factors, with greater relevance among diabetic participants (14.7%). Regarding the characteristics

**Table 1 – Description of the sample and prevalence of acute myocardial infarction according to the independent variables in patients with rheumatoid arthritis. Blumenau, Santa Catarina, Brazil, 2014.**

Variables	Sample		Acute myocardial infarction		p-Value
	n	%	Prevalence (%)	CI 95%	
Total	296	100.0	4.4	(2.0–6.7)	
Gender (n = 296)					0.619 <sup>a</sup>
Male	50	16.9	4.0	(1.5–9.5)	
Female	246	83.1	4.4	(1.8–7.0)	
Age in years (n = 296)					0.400 <sup>a</sup>
20–59 (adults)	180	60.8	3.8	(1.0–6.7)	
≥60 (elderly)	116	39.2	5.1	(1.1–9.2)	
Hypertension (n = 296)					0.017 <sup>a</sup>
No	164	55.4	1.8	(0.2–3.8)	
Yes	132	44.6	7.5	(3.0–12.5)	
Diabetes Mellitus (n = 296)					0.010 <sup>a</sup>
No	262	88.5	3.0	(0.9–5.1)	
Yes	34	11.5	14.7	(2.5–26.8)	
Dyslipidemia (n = 296)					0.071 <sup>a</sup>
No	223	75.3	3.1	(0.8–5.4)	
Yes	73	24.7	8.2	(1.8–14.5)	
Body mass index (kg/m <sup>2</sup> ) (n = 296)					0.364 <sup>b</sup>
≤24.9	113	38.1	3.5	(0.8–6.9)	
25–29.9	124	41.9	4.0	(0.5–7.5)	
≥30	59	20	6.7	(0.1–13.2)	
Smoking (n = 296)					0.053 <sup>a</sup>
Never smoked	167	56.4	2.3	(0.5–4.7)	
Previous and/or current smokers	129	43.6	6.9	(2.5–11.4)	
Physical leisure activity (n = 288)					0.214 <sup>a</sup>
Never practiced	114	39.6	3.4	(0.7–6.1)	
Practiced and/or practices	174	60.4	6.1	(1.6–10.5)	
Positive family history (n = 296)					0.136 <sup>a</sup>
No	169	57.1	2.9	(0.3–5.5)	
Yes	127	42.9	6.2	(2.0–10.5)	
Disease duration (n = 296)					0.001 <sup>a</sup>
0–10 years	175	59.1	1.1	(0.4–2.7)	
≥11 years	121	40.9	9.0	(3.9–14.2)	
Presence of rheumatoid factor (n = 266)					0.603 <sup>a</sup>
0–60 (negative, or low titers)	164	61.6	4.8	(1.5–8.2)	
≥61 (high titers)	102	38.4	4.9	(0.6–9.1)	

<sup>a</sup> Fischer's exact test.<sup>b</sup> Wald's linear trend test.

related to RA, duration of disease over 10 years was the only variable to demonstrate a statistically significant association (Table 1).

In the gross analysis, it was verified that the dependent variable presented a tendency of association with dyslipidemia and smoking; on the other hand, significance was observed with hypertension, diabetes mellitus, and disease duration. In the adjusted analysis, the variable hypertension lost the power of association; thus, it was suppressed from the final model, composed of diabetes mellitus and disease duration. These two variables presented, respectively, 3.5- and 8.2-fold increases in the chance of showing the outcome, compared to non-diabetic patients with less than 10 years of disease (Table 2). Together, these two variables established a coefficient of determination of 17%.

## Discussion

The study identified a greater chance of MI defined by cardiac catheterization for angioplasty or stent implantation or for coronary artery bypass grafting in RA patients with diabetes mellitus and over 10 years of disease.

In Brazil, this is the first study to establish the prevalence of MI (4.4%) in this population. Previous studies have shown that European countries have a prevalence between 2% (United Kingdom) and 7% (Germany and the Netherlands)<sup>11</sup>; from 1% (Morocco) to 3% (Egypt) in African countries<sup>11</sup>; from 2% (Taiwan) to 5% (Japan and Russia) in Asian countries<sup>11,22</sup>; from 3.7 to 5% in North America (United States)<sup>10,11</sup>; and finally from 2% (Argentina and Venezuela) to 7% (Uruguay) in Latin America.<sup>11,23</sup> On the other hand, a review of the literature for

**Table 2 – Gross and adjusted logistic regression analysis of patients with acute myocardial infarction and independent variables in patients with rheumatoid arthritis. Blumenau, Santa Catarina, Brazil, 2014.**

Variables	Gross analysis			Adjusted analysis		
	OR	CI 95%	p-Value	OR	CI 95%	p-Value
<b>Total</b>						
<i>Gender</i>			0.882 <sup>a</sup>			0.864
Male	1.0			1.0		
Female	1.1	(0.2–5.2)		1.0	(0.4–2.3)	
<i>Age in years</i>			0.600 <sup>a</sup>			0.595
20–59 (adults)	1.0			1.0		
≥60 (elderly)	1.3	(0.4–4.1)		1.3	(0.4–4.1)	
<i>Hypertension</i>			0.027			0.116 <sup>b</sup>
No	1.0			1.0		
Yes	4.3	(1.1–16.3)		3.0	(0.7–12.4)	
<i>Diabetes Mellitus</i>			0.005			0.006
No	1.0			1.0		
Yes	5.4	(1.6–17.8)		3.5	(1.7–21.2)	
<i>Dyslipidemia</i>			0.076			0.379 <sup>b</sup>
No	1.0			1.0		
Yes	2.7	(0.8–8.5)		1.7	(0.5–6.0)	
<i>Body mass index (kg/m<sup>2</sup>)</i>			0.367 <sup>a</sup>			0.846
≤24.9	1.0			1.0		
25–29.9	1.1	(0.2–4.3)		1.0	(0.2–3.6)	
≥30	1.9	(0.4–8.2)		1.1	(0.2–5.4)	
<i>Smoking</i>						
Never smoked	1.0		0.068	1.0		0.108 <sup>b</sup>
Previous and/or current smokers	3.5	(0.9–10.1)		2.7	(0.8–9.1)	
<i>Physical leisure activity</i>			0.288 <sup>a</sup>			0.399
Never practiced	1.0			1.0		
Practiced and/or practices	1.8	(0.5–5.5)		1.6	(0.5–5.0)	
<i>Positive family history</i>			0.175			0.221 <sup>b</sup>
No	1.0			1.0		
Yes	2.2	(0.7–6.9)		2.0	(0.6–6.5)	
<i>Disease duration</i>			0.005			0.005
0–10 years	1.0			1.0		
≥11 years	8.6	(1.8–39.7)		8.2	(1.9–43.6)	
<i>Presence of rheumatoid factor</i>			0.993 <sup>a</sup>			0.946
0–60 (negative, or low titers)	1.0			1.0		
≥61 (high titers)	1.0	(0.3–3.1)		1.0	(0.2–3.2)	

<sup>a</sup> Excluded from the multiple analysis ( $p > 0.20$ ).

<sup>b</sup> Excluded from the final model ( $p > 0.05$ ).

CVD limited to Latin American countries found a more important prevalence (9%) of coronary artery disease.<sup>24</sup> In Oceania, a study using the hospital database of the city of Christchurch established a prevalence of 8.3%.<sup>15</sup>

The CORONNA<sup>10</sup> study found a significant difference in the risk of ischemic events among women (RR 3.1) versus men (RR 6.5). The sample consisted of 75% of women, which differs from our study, with 83% of women. This could explain the difference in results between genders. The age factor showed a tendency of greater chance among the elderly, but without significance. In this study, results were obtained that were common to those in the QUEST-RA study,<sup>12</sup> which, after the multivariate analysis for MI, showed no difference in relation to age.

Among the traditional risk factors, patients with a history of hypertension or dyslipidemia did not show a greater chance

of MI because, after the analysis adjusted for gender and age in the final model, they lost an association with outcome, although this association was pointed out by other international studies.<sup>25,26</sup>

Diabetes mellitus presents a direct association with an ischemic event, a finding also observed in other studies.<sup>12,25</sup> A systemic review and meta-analysis on the impact of cardiovascular risk factors for MI in patients with RA performed in 2014 indicated that diabetic individuals demonstrated a propensity 1.9 times higher versus non-diabetic patients,<sup>26</sup> while in the present study a 3.5 times higher chance was found.

Other studies have confirmed that the risk factors obesity and physical activity were not associated with ischemic cardiac morbidity.<sup>8,12,27</sup> In a French hospital, smoking was evaluated among patients with RA in association with an ischemic

outcome.<sup>28</sup> The investigators found that there was no association with CVD, a finding in line with the results of our study. There was a prevalence of 43% for positive family history in the sample, but with no statistical significance with the outcome, while two other studies indicated an opposed relationship.<sup>29,30</sup>

Patients with disease duration over 10 years had an 8.2-fold higher chance of MI *versus* patients with a shorter duration of their disease. This association was maintained after the adjusted analysis and remained in the final model. A Japanese study including a follow-up of 571 patients in a university hospital over a decade concluded that disease duration (>10 years) was an independent risk factor for cardiovascular events.<sup>31</sup> This finding results from the longer duration of the inflammatory process for the generation of consequences such as atherosclerosis and endothelial dysfunction.<sup>32</sup> On the other hand, a study conducted in the Netherlands did not indicate a difference in the risk for an ischemic event due to a disease duration of less than or greater than 10 years.<sup>33</sup>

In this study, the value of the rheumatoid factor (RF) in high titers was used as a marker of poor prognosis (RF > 60), because RF is a predictor of cardiovascular disease<sup>34</sup> and also because it could promote instability and rupture of atherosclerotic plaque into the coronary artery.<sup>35</sup> Some studies have shown that the presence of RF in both non-diseased individuals<sup>36</sup> and in patients with RA<sup>37</sup> confers a higher chance of MI. However, the results of this study did not show any association of RF with the outcome, as already indicated in another study.<sup>14</sup>

In the present study, some limitations must be taken into account. The cross-sectional design of the study makes it impossible to determine cause and effect between the exploratory variables and the outcome. Based on the results obtained, the possibility of reverse causality, characteristic in cross-sectional studies, is highlighted. Another factor to consider is the possibility of memory bias in the collection of some information, which is attenuated by the common characteristic of RA being a chronic illness. Finally, the self-reported data on comorbidities have not been confirmed by a physician. On the other hand, health surveys reveal that the information obtained on the prevalence of chronic diseases presents good agreement, when compared to medical records or clinical exams, especially for some chronic diseases such as hypertension and diabetes mellitus (DM).<sup>38,39</sup> It should further be considered that the data related to RA were collected according to the European League Against Rheumatism (EULAR) recommendations for annual detection and monitoring for cardiovascular risk.<sup>40</sup>

This is the first Brazilian study to establish a prevalence of MI among RA patients. Among the traditional risk factors, diabetes mellitus, and among factors related to RA, disease duration, were the associated variables. New population-based studies are needed in order to increase the consistency of information on coronary artery disease in RA patients and also to investigate associated factors in other Brazilian regions.

## Funding

Fundação de Amparo à Pesquisa do Estado de São Paulo, process FAPESP 2013/12979-1.

## Conflicts of interest

The authors declare no conflicts of interest.

## Acknowledgements

To Drs. Ana Maria Gallo, João Elias de Moura Júnior and Jeronimo S. Benites Júnior, the rheumatologists who contributed with patients to obtain the study sample.

## REFERENCES

- Kay J, Upchurch KS. ACR/EULAR 2010 Rheumatoid arthritis classification criteria. *Rheumatology*. 2012;51 Suppl. 6:5-9.
- Guillemin F, Saraux A, Guggenbuhl P, Roux CH, Fardellone P, Le Bihan E, et al. Prevalence of rheumatoid arthritis in France: 2001. *Ann Rheum Dis*. 2005;64:1427-30.
- Cross M, Smith E, Hoy D, Carmona L, Wolfe F, Vos T, et al. The global burden of rheumatoid arthritis: estimates from the global burden of disease 2010 study. *Ann Rheum Dis*. 2014;73:1316-22.
- Gabriel SE. The epidemiology of rheumatoid arthritis. *Rheum Dis Clin North Am*. 2001;27:269-81.
- Marques NJF, Gonçalves ET, Barros EFO, Cunha MFL, Radominski S, Oliveira SM, et al. Estudo multicêntrico da prevalência da artrite reumatoide do adulto em amostras da população brasileira. *Rev Bras Reumatol*. 1993;33:169-73.
- Senna ER, De Barros AL, Silva EO, Costa IF, Pereira LV, Ciconelli RM, et al. Prevalence of rheumatic diseases in Brazil: a study using the COPCORD approach. *J Rheumatol*. 2004;31:594-7.
- Lévy L, Fautrel B, Barnetche T, Schaeffer T. Incidence and risk of fatal myocardial infarction and stroke events in rheumatoid arthritis patients. A systematic review of the literature. *Clin Exp Rheumatol*. 2008;26:673-9.
- Maradit-Kremers H, Crowson CS, Nicola PJ, Ballman KV, Roger VL, Jacobsen SJ, et al. Increased unrecognized coronary heart disease and sudden deaths in rheumatoid arthritis: a population-based cohort study. *Arthritis Rheum*. 2005;52:402-11.
- Bergström U, Jacobsson LT, Turesson C. Cardiovascular morbidity and mortality remain similar in two cohorts of patients with long-standing rheumatoid arthritis seen in 1978 and 1995 in Malmö, Sweden. *Rheumatology (Oxford)*. 2009;48:1600-5.
- Solomon DH, Kremer J, Curtis JR, Hochberg MC, Reed G, Tsao P, et al. Explaining the cardiovascular risk associated with rheumatoid arthritis: traditional risk factors versus markers of rheumatoid arthritis severity. *Ann Rheum Dis*. 2010;69:1920-5.
- Dougados M, Soubrier M, Antunez A, Balint P, Balsa A, Buch MH, et al. Prevalence of comorbidities in rheumatoid arthritis and evaluation of their monitoring: results of an international, cross-sectional study (COMORA). *Ann Rheum Dis*. 2014;73:62-8.
- Naranjo A, Sokka T, Descalzo MA, Calvo-Alén J, Hørslev-Petersen K, Luukkainen RK, et al. Cardiovascular disease in patients with rheumatoid arthritis: results from the QUEST-RA study. *Arthritis Res Ther*. 2008;10:R30.
- Holmqvist ME, Wedrén S, Jacobsson LT, Klareskog L, Nyberg F, Rantapää-Dahlqvist S, et al. No increased occurrence of ischemic heart disease prior to the onset of rheumatoid arthritis: results from two Swedish population-based rheumatoid arthritis cohorts. *Arthritis Rheum*. 2009;60:2861-9.

14. Holmqvist ME, Wedrén S, Jacobsson LT, Klareskog L, Nyberg F, Rantapää-Dahlqvist S, et al. Rapid increase in myocardial infarction risk following diagnosis of rheumatoid arthritis amongst patients diagnosed between 1995 and 2006. *J Intern Med.* 2010;268:578–85.
15. Khan EA, Stamp LK, O'Donnell JL, Chapman PT. Cardiovascular morbidity in rheumatoid arthritis patients in North Canterbury, New Zealand 1999–2008. *Int J Rheum Dis.* 2013;16:19–23.
16. Kaplan MJ. Cardiovascular complications of rheumatoid arthritis: assessment, prevention, and treatment. *Rheum Dis Clin North Am.* 2010;36:405–26.
17. del Rincón ID, Williams K, Stern MP, Freeman GL, Escalante A. High incidence of cardiovascular events in a rheumatoid arthritis cohort not explained by traditional cardiac risk factors. *Arthritis Rheum.* 2001;44:2737–45.
18. Tiippana-Kinnunen T, Kautiainen H, Paimela L, Leirisalo-Repo M. Co-morbidities in Finnish patients with rheumatoid arthritis: 15-year follow-up. *Scand J Rheumatol.* 2013;42:451–6.
19. Kapetanovic MC, Lindqvist E, Simonsson M, Geborek P, Saxne T, Eberhardt K. Prevalence and predictive factors of comorbidity in rheumatoid arthritis patients monitored prospectively from disease onset up to 20 years: lack of association between inflammation and cardiovascular disease. *Scand J Rheumatol.* 2010;39:353–9.
20. Programa das Nações Unidas – PNUD. Atlas do Desenvolvimento Humano no Brasil 2003. Accessed 11/13. Available at: <http://www.pnud.org.br/atlas>.
21. Instituto Brasileiro de Geografia e Estatística-IBGE. Sinopse do Censo Demográfico de 2010/2011. Accessed 11/13. Available at: <http://www.ibge.gov.br/home/estatistica/populacao/censo2010>.
22. Panafidina TA, Kondratyeva LV, Gerasimova EV, Gorbunova YN, Popkova TV, Nasonov EL. Characteristics and cardiovascular comorbidities in patients with rheumatoid arthritis in a local patient cohort in Russia. *Ann Rheum Dis.* 2013;72 Suppl. 3:A865–6.
23. Villafrádez-Díaz M, Santiago-Casas Y, Nieves-Plaza M, Morales M, Rodríguez V, Ríos G, et al. Association of the use of statins with disease activity and functional status in Puerto Ricans with rheumatoid arthritis. *P R Health Sci J.* 2014;33:3–8.
24. Sarmiento-Monroy JC, Amaya-Amaya J, Espinosa-Serna JS, Herrera-Díaz C, Anaya JM, Rojas-Villarraga A. Cardiovascular disease in rheumatoid arthritis: a systematic literature review in Latin America. *Arthritis.* 2012;371909:1–17.
25. Chung WS, Lin CL, Peng CL, Chen YF, Lu CC, Sung FC. Rheumatoid arthritis and risk of acute myocardial infarction – a nationwide retrospective cohort study. *Int J Cardiol.* 2013;168:4750–4.
26. Baghdadi LR, Woodman RJ, Shanahan EM, Mangoni AA. The impact of traditional cardiovascular risk factors on cardiovascular outcomes in patients with rheumatoid arthritis: a systematic review and meta-analysis. *PLOS ONE.* 2015;10:1–18.
27. Gonzalez A, Maradit Kremers H, Crowson CS, Ballman KV, Roger VL, Jacobsen SJ, et al. Do cardiovascular risk factors confer the same risk for cardiovascular outcomes in rheumatoid arthritis patients as in non-rheumatoid arthritis patients? *Ann Rheum Dis.* 2008;67:64–9.
28. Assous N, Touzé E, Meune C, Kahan A, Allanore Y. Cardiovascular disease in rheumatoid arthritis: single-center hospital-based cohort study in France. *Joint Bone Spine.* 2007;74:66–72.
29. Rojas-Villarraga A, Ortega-Hernandez OD, Gomez LF, Pardo AL, López-Guzmán S, Arango-Ferreira C, et al. Risk factors associated with different stages of atherosclerosis in Colombian patients with rheumatoid arthritis. *Semin Arthritis Rheum.* 2008;38:71–82.
30. Ortega-Hernandez OD, Pineda-Tamayo R, Pardo AL, Rojas-Villarraga A, Anaya JM. Cardiovascular disease is associated with extra-articular manifestations in patients with rheumatoid arthritis. *Clin Rheumatol.* 2009;28:767–75.
31. Masuda H, Miyazaki T, Shimada K, Tamura N, Matsudaira R, Yoshihara T, et al. Disease duration and severity impacts on long-term cardiovascular events in Japanese patients with rheumatoid arthritis. *J Cardiol.* 2014;64:366–70.
32. Full LE, Ruisanchez C, Monaco C. The inextricable link between atherosclerosis and prototypical inflammatory diseases rheumatoid arthritis and systemic lupus erythematosus. *Arthritis Res Ther.* 2009;11:217–27.
33. Arts EE, Franssen J, den Broeder AA, Popa CD, van Riel PL. The effect of disease duration and disease activity on the risk of cardiovascular disease in rheumatoid arthritis patients. *Ann Rheum Dis.* 2015;74:998–1003.
34. Heliövaara M, Aho K, Knekt P, Aromaa A, Maatela J, Reunanen A. Rheumatoid factor, chronic arthritis and mortality. *Ann Rheum Dis.* 1995;54:811–4.
35. Medeiros AM, von Mühlen CA, Gidlund MA, Bodanese R, Gottlieb MG, Bodanese LC. Antibodies against oxLDL and acute coronary syndrome. *Arq Bras Cardiol.* 2010;95:47–54.
36. Liang KP, Kremers HM, Crowson CS, Snyder MR, Thorneau TM, Roger VL, et al. Autoantibodies and the risk of cardiovascular events. *J Rheumatol.* 2009;36:2462–9.
37. Gabriel SE. Cardiovascular morbidity and mortality in rheumatoid arthritis. *Am J Med.* 2008;121:S9–14.
38. Martin LM, Leff M, Calonge N, Garrett C, Nelson DE. Validation of self-reported chronic conditions and health services in a managed care population. *Am J Prev Med.* 2000;18:215–8.
39. Haapanen N, Mäkelä S, Pasanen M, Oja P, Vuori I. Agreement between questionnaire data and medical records of chronic diseases in middle-aged and elderly Finnish men and women. *Am J Epidemiol.* 1997;145:762–9.
40. Peters MJ, Symmons DP, McCarey D, Dijkmans BA, Nicola P, Kvien TK, et al. EULAR evidence-based recommendations for cardiovascular risk management in patients with rheumatoid arthritis and other forms of inflammatory arthritis. *Ann Rheum Dis.* 2010;69:325–31.