







## Neonatal screening for spinal muscular atrophy: A pilot study in Brazil

Alice Brinckmann Oliveira Netto<sup>1,2,3</sup>, Ana Carolina Brusius-Facchin<sup>3,4</sup>, Júlia F. Lemos<sup>2,4,5</sup>,  
Fernanda B. Pasetto<sup>2,4</sup>, Carolina S. Brasil<sup>2</sup>, Franciele B. Trapp<sup>2,4</sup>, Jonas Alex Morales Saute<sup>1,2,11</sup>,  
Karina Carvalho Donis<sup>2</sup> , Michele Michelin Becker<sup>6</sup>, Paloma Wiest<sup>7</sup>, Vivian L. S. Coutinho<sup>7</sup>,  
Simone Martins de Castro<sup>8</sup> , Juliana Ferreira<sup>10</sup>, Cynthia Silveira<sup>10</sup>, Maria Fernanda R. Bittar<sup>10</sup>, Cristina  
Wang<sup>9</sup>, Janaina M. Lana<sup>9</sup>, Marcondes Cavalcante França Junior<sup>10</sup>  and Roberto Giugliani<sup>1,4,12,13,14</sup> 

<sup>1</sup>Universidade Federal do Rio Grande do Sul, Programa de Pós-graduação em Genética e Biologia Molecular, Porto Alegre, RS, Brazil.

<sup>2</sup>Hospital de Clínicas de Porto Alegre, Serviço de Genética Médica, Porto Alegre, RS, Brazil

<sup>3</sup>Hospital de Clínicas de Porto Alegre, Centro de Pesquisa Experimental, Laboratório BioDiscovery, Porto Alegre, RS, Brazil.

<sup>4</sup>Instituto Nacional de Genética Médica Populacional (iNaGeMP), Porto Alegre, RS, Brazil.

<sup>5</sup>Universidade Federal do Rio Grande do Sul, Departamento de Biotecnologia, Porto Alegre, RS, Brazil.

<sup>6</sup>Hospital de Clínicas de Porto Alegre, Serviço de Neurologia, Porto Alegre, RS, Brazil.

<sup>7</sup>Hospital Materno Infantil Presidente Vargas, Serviço de Referência em Triagem Neonatal, Porto Alegre, RS, Brazil.

<sup>8</sup>Universidade Federal do Rio Grande do Sul, Faculdade de Farmácia, Porto Alegre, RS, Brazil.

<sup>9</sup>Novartis Brasil, São Paulo, SP, Brazil.

<sup>10</sup>Universidade Estadual de Campinas, Departamento de Neurologia, Campinas, SP, Brasil.

<sup>11</sup>Universidade Federal do Rio Grande do Sul, Departamento de Genética, Porto Alegre, RS, Brazil.

<sup>12</sup>Instituto de Genética para Todos (IGPT), Porto Alegre, RS, Brazil.

<sup>13</sup>Casa dos Raros, Porto Alegre, RS, Brazil.

<sup>14</sup>DASA Genômica, São Paulo, SP, Brazil.

### Abstract

Spinal muscular atrophy (SMA) is considered one of the most common autosomal recessive disorders, with an estimated incidence of 1 in 10,000 live births. Testing for SMA has been recommended for inclusion in neonatal screening (NBS) panels since there are several therapies available and there is evidence of greater efficacy when introduced in the pre/early symptomatic phases. In Brazil, the National Neonatal Screening Program tests for six diseases, with a new law issued in 2021 stating that it should incorporate more diseases, including SMA. In the present study, dried blood spot (DBS) samples collected by the Reference Services of Neonatal Screening of RS and SP, to perform the conventional test were also screened for SMA, using real-time PCR, with SALSA MC002 technique. A total of 40,000 samples were analyzed, enabling the identification of four positive cases of SMA, that were confirmed by MLPA. Considering our sampling, Brazil seems to have an incidence comparable to the described in other regions. This work demonstrated that the use of the MC002 technique in samples routinely collected for the conventional NBS program is suitable to screen for SMA in our conditions and can be included in the expansion of the neonatal screening programs.

**Keywords:** Spinal Muscular Atrophy, neonatal screening, Brazil, real-time PCR, MLPA.

Received: April 28, 2023; Accepted: October 18, 2023.

### Introduction

Spinal Muscular Atrophy (SMA) is a neuromuscular disease characterized by the degeneration of motor neurons in the anterior horn of the spinal cord caused by mutations in the survival of motor neuron 1 gene (*SMN1*) (Mercuri *et al.*, 2012). This degeneration leads to progressive muscle weakness

and atrophy, affecting the central nervous system, peripheral nervous system, and voluntary muscle movement. The disease presents four clinical types (SMA type I, II, III and IV). The clinical types are differentiated based on the age at onset of symptoms and maximum acquired function, which is related to the number of copies of the survival of motor neuron 2 gene (*SMN2*). SMA has an autosomal recessive inheritance mode and, despite being rare, it is the most common genetic cause of infantile death (Lunn and Wang, 2008; Baioni and Ambiel, 2010; D'Amico *et al.*, 2011).

Send correspondence to Roberto Giugliani. Casa dos Raros, Rua São Manoel, 730, 90610-261, Porto Alegre, RS, Brazil. E-mail: [rgiugliani@hcpa.edu.br](mailto:rgiugliani@hcpa.edu.br).

The SMN locus is located on chromosome 5 (5q11.2-q13.3), comprising 9 exons and spanning approximately 20 kb. The *SMN1* and *SMN2* genes are highly homologous and are part of a large, inverted duplication in the SMN locus, which is prone to rearrangements and deletions. These genes share more than 99% of their sequence and both encode the survival motor neuron (SMN) protein (Lefebvre *et al.*, 1995; Bürglen *et al.*, 1996). The substantial differences between them are in 11 nucleotides, and the c.840C>T substitution is the most important for the clinical understanding of SMA (Finkel *et al.*, 2017). This C to T substitution occurs in exon 7 of the SMN locus, differentiating the *SMN1* and *SMN2* genes, as *SMN2* gene has the substitution in its sequence. The mutation occurs in a region called exonic splicing enhancer, which regulates the inclusion of exon 7 in the mRNA transcript. When the mutation occurs, it produces an incomplete mRNA, without exon 7. Considering that exon 7 is responsible for generating the complete and functional SMN protein, *SMN2* transcripts translate a truncated and unstable protein (SMN $\Delta$ 7), which is rapidly degraded (Vitte *et al.*, 2007; Baioni and Ambiel, 2010). Thereby, the *SMN2* gene can be considered as a less active gene, acting as a disease severity modifier.

The diagnosis of SMA is performed using molecular genetics techniques, preferably based on quantitative methods, as the number of copies of *SMN1* and *SMN2*. Exon 7 is the point of interest for understanding the disease. Among the quantitative methods, real-time quantitative PCR (real-time qPCR) and Multiplex Ligation-dependent Probe Amplification (MLPA) are the most used (Chiang *et al.*, 1996; Ogino and Wilson, 2004; Sugarman *et al.*, 2012). MLPA is considered the gold standard methodology for diagnosis, given that it is able to identify the number of copies of both genes (Arkblad *et al.*, 2006; Varga *et al.*, 2012; Li *et al.*, 2017). However, reaction preparation is time-consuming and large-scale analysis is not possible. In contrast, real-time qPCR has several options for large-scale analysis and shorter reaction preparation time. Several commercial kits are commercially available for the diagnosis and screening of SMA based on real-time qPCR technique, allowing the simultaneous analysis of up to 384 samples at the same time (Kraszewski *et al.*, 2018; Gutierrez-Mateo *et al.*, 2019; Strunk *et al.*, 2019; Wang *et al.*, 2021).

The approval by regulatory agencies of Nusinersen (Spiranza) made available the first specific therapy capable of significantly modifying the natural history of SMA. The emergence of this therapy, associated with evidence of greater efficacy in studies in the pre-symptomatic phase of the condition, argues in favor of starting treatment as early as possible (Finkel *et al.*, 2017; Talbot and Tizzano, 2017). In such a manner, it is important to consider the therapeutic window for a potential benefit, since in SMA type I there is a rapid loss of motor neurons in the first 3 months of life and a predominant loss of motor units at 6 months. This emphasizes the importance of carrying out a screening test for the disease (Pane *et al.*, 2019, 2022). In addition to Nusinersen, other therapies for SMA are available, as ANVISA (Brazilian drug agency) also approved Risdiplam (Evrysdi), and the gene therapy Zolgensma (onasemnogen abeparvovec).

Furthermore, there are other drugs undergoing clinical studies that promote alternative splicing of the *SMN2* gene to produce functional SMN.

Neonatal Screening (NBS) has as main objective the early identification of individuals affected by treatable diseases, in which the benefit of treatment is greater when started in the preclinical phase (Guthrie and Susi, 1963). In Brazil, the acknowledgment of NBS as a specific public health program occurred in 2001, with the creation of the National Neonatal Screening Program (PNTN) (Ministério da Saúde, 1992, 2001), which currently includes six conditions. In 2021, a new law was approved to improve the PNTN, expanding the number of diseases to be screened in the program, and SMA is one of the targets to be included (Ministério da Saúde, 2021), following regulations already implemented in other countries (Boemer *et al.*, 2021; D'Silva *et al.*, 2022; Kernohan *et al.*, 2022; Lee *et al.*, 2022; Sawada *et al.*, 2022). The challenges for the establishment of the methodologies for this expansion are many, and a series of ethical and economic issues related to the availability of treatment also emerged, given the high costs of the therapies and the format of the Brazilian health system, which should provide universal and integral access, with equity. This paper reports a pioneer NBS pilot project for SMA in Brazil, using for the screening a quantitative real-time PCR technique (SALSA® MC002 SMA Newborn Screen), followed by confirmation by Multiplex Ligation Probe Amplification (MLPA), and was performed with the purpose of validating the methodology and testing it in a sample of neonates from the states of Rio Grande do Sul and Sao Paulo.

## Subjects and Methods

### Samples

DBS samples from the conventional heel prick test of 40,000 newborns were collected in the primary health care units connected to the Reference Service of Neonatal Screening of Rio Grande do Sul state (SRTN/RS) and to the SRTN/Unicamp, in the state of Sao Paulo. These samples were shipped to the Molecular Genetics Laboratory of the Medical Genetics Service of Hospital de Clinicas de Porto Alegre (HCPA) where they were processed and analyzed.

Ethical approval was obtained from the local Ethics Committee of HCPA (project #2020-0705) and the National Ethics Committee (CAAE #41738220.4.1001.5327). All newborns who had samples for NBS collected by the SRTN/RS and SRTN/Unicamp could participate in the research, unless their parents/legal guardians had expressed their unwillingness to participate in the study.

### Chemicals and reagents

The study was set up using SALSA® MC002 SMA Newborn Screen and SALSA® MLPA® Probemix P060 SMA (MRC Holland, Amsterdam, NL, NLD), 1 M NaOH (Sigma Aldrich Saint Louis, MO, USA) and ultrapure DNase/RNase-free distilled water (Thermo Fisher Scientific Waltham, MA, USA).

## Sample analyses

### DNA extraction

DNA extraction from DBS samples was performed according to the protocol “Crude extract from an unwashed 3.2 mm punch of a DBS card” (Instructions for use, version A-08; Issued 22 September 2022). This protocol uses one punch of DBS and 90 µl of 10 mM NaOH (Sigma) for elution. It lasts approximately 30 minutes, with 15 minutes of denaturing at 99 °C in the thermal cycler. 2 µl of the diluted crude extract is used for each MC002 reaction.

### Real-time quantitative PCR

Samples were screened for SMA through real-time qPCR (first-tier test) by SALSA® MC002 SMA Newborn Screen (MRC Holland) kit, following manufacturer’s instructions (Instructions for use, version A-08; Issued 22 September 2022), using QuantStudio™ 5 System (Thermo Fisher Scientific). This is a semiquantitative assay that detects homozygous deletion of *SMN1* exon 7 by melt curve generation. Data analysis and quality control were done by visual examination of the melt curve profiles obtained using QuantStudio™ Design & Analysis Software v1.5.2 (Thermo Fisher Scientific).

The MC002 reaction uses a single pair of primers to amplify a part of exon 7 that includes the c.840C>T substitution, which differentiates the *SMN1* from the *SMN2* gene. After amplification, a fluorescent probe is hybridized to the PCR amplicons, and then the fluorescence is measured during the generation of a melting curve. The probe is labeled with the Cy5 fluorophore at the 5’ end and a quencher at the 3’ end, meaning that when the probe is free in solution, probe fluorescence is blocked by the quencher. However, when the probe is hybridized to a complementary amplicon in *SMN1* or *SMN2* strands after the PCR, the Cy5 dye and the quencher are separated, resulting in maximal fluorescence. Meanwhile the temperature increases slowly after the hybridization occurs, the probe detaches from the amplicon strand at a certain temperature, referred to as the “melting temperature” ( $T_m$ ). Melting temperature is dependent on the sequence of the PCR amplicon.

The MC002 probe forms a perfect amplicon-probe hybrid with amplicons that contain the *SMN1* exon 7 wildtype sequence, resulting in a  $T_m$  of approximately 64 °C. In a different matter, when bound to an *SMN2* amplicon, the mismatch results in a  $T_m$  of approximately 57 °C. Therefore, the absence of a specific peak for *SMN1* is indicative of exon 7 deletion (Strunk *et al.*, 2019). Homozygous deletion of *SMN1* exon 7 should be confirmed through SALSA® MLPA® Probemix P060 SMA.

For interpretation of the results, the controls provided by the manufacturer were used as a parameter. The SALSA SD074 Threshold DNA sample generates a high melt peak at 57 °C, specific to *SMN2* and a low peak at 64 °C, specific to *SMN1*. Samples in which the peak ratio between *SMN1* and *SMN2* is equal or lower than the SALSA SD074 Threshold DNA need follow-up testing by MLPA. The SALSA SD075 Positive DNA sample generates only a high melt peak at 57 °C, specific to *SMN2*. The Q-fragment generates a melt peak at 50 °C and indicates the quality of the DNA sample. In the

no DNA reaction, Q-fragment specific melt peak should be the highest peak.

As recommended by the manufacturer, we first performed the internal validation of the MC002 SMA assay and then proceeded to NBS analysis.

### Multiplex Ligation Probe Amplification (MLPA)

Positive and ambiguous samples were analyzed by MLPA (second-tier test) to confirm the absence of *SMN1* and determine the number of copies of *SMN2* exon 7. It was performed using the SALSA® MLPA® Probemix P060 SMA (MRC-Holland) kit, following the manufacturer’s instructions (Product description version B2-09; Issued 11 July 2022). The results of this analysis allowed identification of SMA patients potentially affected, who were invited to perform a new collection for confirmatory laboratory procedures.

The Probemix P060 SMA Carrier contains a total of 21 probes with amplification products between 154 nt and 342 nt. It includes two probes each for *SMN1* and *SMN2*, and 17 reference probes. The specific probes for *SMN1* have 183 nt and 218 nt, identifying exons 7 and 8, respectively. On the other hand, the specific probes for *SMN2* have 282 nt and 301 nt, identifying exons 7 and 8, respectively.

The first part of the MLPA analysis (denaturation, hybridization, ligation, and amplification) was performed in a conventional thermocycler. The fragment analysis was performed using Applied Biosystems™ 3500 Genetic Analyzer (Life Technologies™). Data analysis and quality control was done by Coffalyser.Net™ software v.220.401.000 (MRC-Holland) and interpretation of the results was done as the manufacturer’s instructions.

## Results

A total of 46,289 DBS samples collected for the conventional heel prick test were received and processed at the SRTN/RS. After the initial screening, 35,000 DBS samples with sufficient material for testing were sent to the research laboratory for the SMA screening. Concomitantly, 5,000 DBS samples collected at SRTN/Unicamp were also sent to the research laboratory for the SMA screening.

Prior to screening, the SALSA® MC002 SMA Newborn Screen methodology was validated following the instructions. Upon successful validation, comparative analyses were performed to choose the appropriate extraction protocol among the three proposed options. Therefore, the “Crude extract from an unwashed 3.2 mm punch of a DBS card” protocol was chosen. This protocol requires sample dilution; however, it presented good melt peak patterns, and it was also considered the fact that a 3.2 mm puncher was available in the laboratory.

Succeeding the validation, 40,000 samples of newborns were screened. A total of 39,995 presented negative results for SMA in the first-tier test. Four samples obtained positive results for SMA in the first-tier and had the result confirmed by the second-tier test, enabling the determination of the clinical type of SMA in each the individual (Table 1).

The samples that obtained negative results presented melt peaks at 64 °C (*SMN1*) and 57 °C (*SMN2*), or only at 64 °C. The absence of a melt peak corresponding to the

*SMN2* gene has no clinical consequences and it has frequent occurrence (Figure 1).

The sample number 4325 was the first to present a suggestive result for SMA. In the first-tier test the absence of the melt peak at 64 °C and the presence of a high peak at 56 °C were observed. Follow-up analysis by MLPA was conducted and the deletion of *SMN1* exon 7 was confirmed. Also, the presence of 4 copies of *SMN2* exon 7 was visualized,

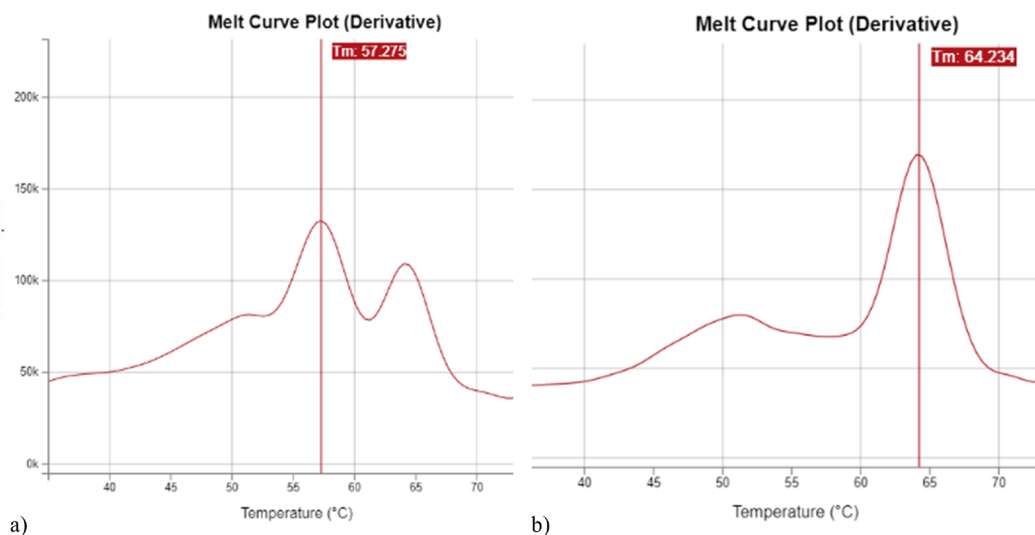
determining the clinical type of the patient as SMA type III (Figure 2).

Afterwards, samples 7721 and 20125 also presented suggestive results for SMA. The absence of the melt peaks at 64 °C in the first-tier test were observed once again. In the second-tier test the deletion of *SMN1* exon 7 was confirmed and it was stated the presence of 3 copies of *SMN2* exon 7 in both samples. Thus, it was possible to determine that these patients had SMA type II.

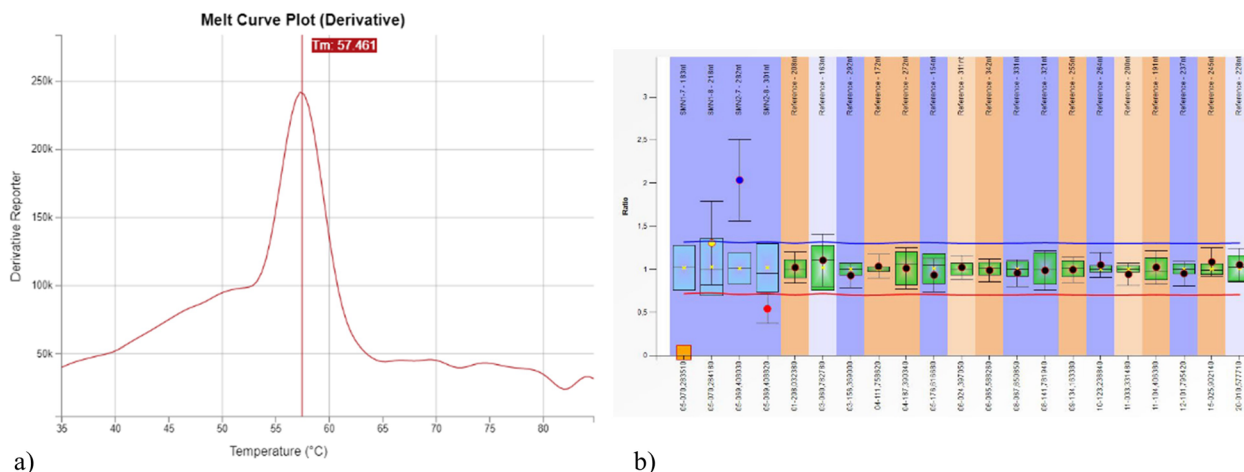
**Table 1** – Clinical information, genotype, and clinical type of patients positive for SMA in the NBS.

ID	Gender	Age at sample collection <sup>1</sup>	Age at analysis <sup>2</sup>	Clinical type	Number of copies of <i>SMN2</i>
4325	Male	2 months	3 months	SMA type III	4 copies
7721	Male	4 days	1.5 months	SMA type II	3 copies
20125	Female	5 days	2.5 months	SMA type II	3 copies
3198	Male	6 days	2.5 months	SMA type I	2 copies

<sup>1</sup> Age when DBS samples were collected for the conventional heel prick test. <sup>2</sup> Age at which sample arrived at the research laboratory for SMA screening.



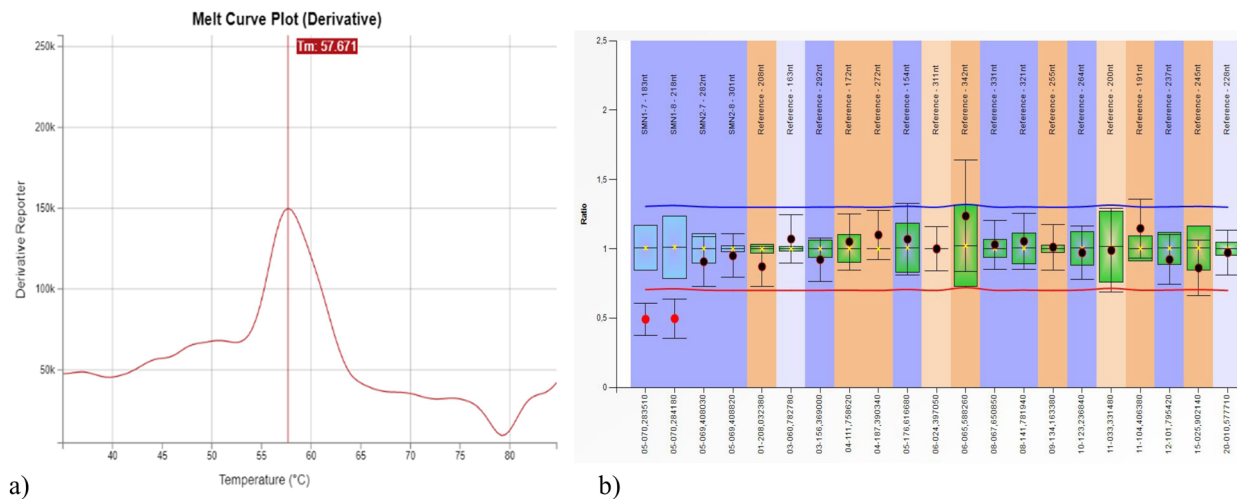
**Figure 1** – Example of negative samples. (a) Presence of the 56 °C and 64 °C melt peaks; (b) Presence of the 64 °C melt peak only.



**Figure 2** – Example of positive sample for SMA. (a) Absence of the 64 °C melt peak, suggesting deletion of the *SMN1* gene; (b) Ratio chart from MLPA confirming the deletion of *SMN1* exon 7 and indicating 4 copies of *SMN2* exon 7.

Likewise, sample 3198 presented suggestive results for SMA. The absence of the melt peaks at 64 °C in the first-tier test was observed and the deletion of *SMN1* exon 7 was confirmed in the second-tier test. Also, it was stated the presence of 1 copy of *SMN2* exon 7, determining that the patient had SMA type I.

One sample presented a positive result only in the first-tier test, but in the second-tier test indicated the presence of *SMN1* exon 7 in heterozygosis (Figure 3). Consequently, a false positive result was obtained in the first-tier test, demonstrating the importance of performing MLPA for diagnostic confirmation.



**Figure 3** — False positive result in the first-tier test for SMA screening. (a) Absence of the 64 °C melt peak, suggesting deletion of the *SMN1* gene; (b) Ratio chart from MLPA demonstrating the presence of exon 7 of *SMN1* in heterozygosis.

## Discussion

To the best of our knowledge, this is the first report of a NBS pilot for SMA in Brazil. The results obtained in this work demonstrate the possibility of screening for SMA using samples collected for the conventional NBS test, which is extremely important for the successful expansion of the PNTN.

We observed a negative result in 39,995 samples using the SALSA MC002 kit. As far as we know, no newborns carrying a homozygous deletion of *SMN1* gene were missed within the samples screened in this study. In four samples we observed positive results in the first and second-tier tests, confirming the diagnosis of SMA.

The patients who were diagnosed with SMA type I or type II (Table 1) had a medical appointment at a reference center scheduled, according to the study protocol. Subsequently, they received the treatment and follow-up as established by the Brazilian Public Health System guidelines (PCDT) for these cases. The patient who was diagnosed with SMA type III (Table 1 and Figure 2) was also referred for medical appointment. However, according to PCDT, this case did not receive specific treatment, and will remain in follow-up. In addition, there is another important information in Table 1. It is possible to notice a difference in the age at sample collection among patients, given that the first patient had his sample collected at 2 months of age. Despite the recommendation by the NBS reference service that the samples should be ideally collected between the 3<sup>rd</sup> and the 5<sup>th</sup> day of life, late collection like in this case is not rare in the context of public health services in Brazil. As the late collection could have an impact in the outcome of the treatment in these babies,

appropriate actions and recommendations to ensure the early collection of samples should be considered.

In one sample it was reported a false-positive result in the first-tier test. This sample showed a pattern corresponding to the deletion of *SMN1*, indicative of SMA. The follow-up analysis in the second-tier test revealed the presence of *SMN1* exon 7 in heterozygosis, ruling out the possibility of the child to be affected by SMA (Figure 3). According to the MC002 kit manufacturer's instructions, two polymorphisms could have caused this result. In other words, in the presence of these SNPs, the result would apparently indicate deletion of *SMN1* even if at least one copy of the gene was present. The SNP c.835-594A>G (rs56299889) generates a lower *SMN1* specific peak, and the SNP c.835-506C>A/T (rs200146682) generates the *SMN1* peak ~5.5 °C lower, making the *SMN1* peak to coincide with the *SMN2* peak.

Neonatal screening for SMA has already been reported in many other countries, such as Australia, Germany, Belgium, Canada, United States, Italy, Japan, and Taiwan (Chien *et al.*, 2017; Kariyawasam *et al.*, 2020; Boemer *et al.*, 2021; Vill *et al.*, 2021; Abiusi *et al.*, 2022; Kernohan *et al.*, 2022; Lee *et al.*, 2022; Matteson *et al.*, 2022; Noguchi *et al.*, 2022). Among the methodologies employed in the studies, real-time qPCR was the most used for initial screening. For diagnostic confirmation, the MLPA technique was used in most protocols, except for two, which used digital droplet PCR (ddPCR) technique. The work performed in Taiwan reported 15 positive cases for SMA after the screening by real-time qPCR using TaqMan SNP genotyping as-say. Of these, 8 results were false-positives, which were reclassified to negative after

confirmatory analysis by ddPCR (Chien *et al.*, 2017). The study done in Australia reported 10 positive cases after initial screening by real-time qPCR using a commercial kit, with only one case determined as false-positive after analysis by ddPCR (Kariyawasam *et al.*, 2020). In the study carried out in Japan, 12 positive cases were reported after screening by real-time qPCR using a commercial kit, and 10 cases were determined to be false-positives after confirmatory analysis by MLPA (Noguchi *et al.*, 2022).

In addition, the results enabled the obtention of population data on the estimated incidence of SMA in Rio Grande do Sul and Sao Paulo, based on the frequency of positive cases. We identified four patients with the homozygous deletion of *SMN1*, providing an incidence of 1 in 10,000 live births. Compared with the incidence data reported in other countries, apparently Brazil, represented by Rio Grande do Sul and Sao Paulo, presents an incidence within the expectations. In the US, the states of New York and California reported an incidence > 1 in 10,000 live births (Lee *et al.*, 2022; Matteson *et al.*, 2022), which is also seen in Belgium, Canada, Japan, Australia and Taiwan (Chien *et al.*, 2017; Kariyawasam *et al.*, 2020; Boemer *et al.*, 2021; Kernohan *et al.*, 2022; Sawada *et al.*, 2022). Only in Italy and Germany the incidence data was reported as < 1 in 10,000 live births (Vill *et al.*, 2021; Abiusi *et al.*, 2022). This information is important for the planning of health policies and for the definitive implementation of NBS for SMA in Brazil.

Regarding the inclusion of SMA in the PNTN, some countries are reporting the importance of including SMA in NBS programs, taking into account the quality of life of affected individuals and the costs involved in treatment (Gillingwater *et al.*, 2022; Motyl and Gillingwater, 2022; Velikanova *et al.*, 2022; Dangouloff *et al.*, 2023). The studies reported that the early identification of patients, together with the availability of treatments that modify the natural history of the disease, brings benefits to the patients and their families, as well as to government agencies. That is, when comparing the costs of maintaining a patient with SMA without specific treatment and with treatment, a significant difference is observed in patients who received treatment in the pre-symptomatic phase and those who did not have access to treatment (Velikanova *et al.*, 2022).

Also, with the development of gene therapy and its approval by regulatory agencies (Strauss *et al.*, 2022a,b), the importance of early diagnosis and pre-symptomatic treatment became more evident. This therapy, which consists in a single intravenous administration of a viral vector containing the normal gene, has shown efficacy for the treatment of SMA types I and II (Motyl and Gillingwater, 2022), with recent data reinforcing the benefits in patients' quality of life obtained through access to early treatment and the reduction of long-term costs for families and governments (Shih *et al.*, 2022).

## Conclusions

This work indicated that the SALSA® MC002 SMA Newborn Screen method is adequate for the NBS of SMA in Brazil, and suitable to be included in the NBS laboratory routine. By screening 40,000 newborn samples collected by SRTN/RS and SRTN/Uunicamp, an analysis flow was

established in which the samples were analyzed within a maximum of 24 hours after arriving at the laboratory. The cost of reagents was approximately 4.5 USD/sample, similar to the previously reported by another study performed in Brazil (Romanelli Tavares *et al.*, 2021). The identification of 4 patients with homozygous deletion in *SMN1* pointed to an incidence of 1 in 10,000 newborns, which is comparable to that reported in other regions.

## Acknowledgments

A.B.O.N. and R.G. were supported by CNPq (grants #130790/2021-4, and 303219/2019-0, respectively), and J.F.L. by INAGEMP (Grant CNPq # 465549/2014-4). We would like to thank all patients and families included in this study. We would like to thank Fabrizio Barbosa for his administrative support. This work was funded by a research grant from Novartis.

## Conflicts of Interest

The authors declare that there is no conflict of interest that could be perceived as prejudicial to the impartiality of the reported research.

## Author Contributions

ACBF, MCFJ, and RG conceive the study; ABON, ACBF, JFL, FBP, CSB, FBT, JAMS, KCD, MMB, PW, VLSC, SC, JF, CS, MFRB, MCFJ, and RG conducted the experiments; ABON, ACBF, JFL and FBP conducted software analysis; ABON, ACBF, MCFJ, and RG conducted formal analysis; CW, JML, MCFJ, and RG resources; ABON, ACBF, PW, JF, CS, MFRB, MCFJ and RG data curation; ABON, ACBF, and RG wrote the manuscript. All authors read and approved the final version of the manuscript.

## References

- Abiusi E, Vaisfeld A, Fiori S, Novelli A, Spartano S, Faggiano MV, Giovanniello T, Angeloni A, Vento G, Santoloci R *et al.* (2022) Experience of a 2-year spinal muscular atrophy NBS pilot study in Italy: Towards specific guidelines and standard operating procedures for the molecular diagnosis. *J Med Genet* 60:697-705.
- Arklblad EL, Darin N, Berg K, Kimber E, Brandberg G, Lindberg C, Holmberg E, Tulinius M and Nordling M (2006) Multiplex ligation-dependent probe amplification improves diagnostics in spinal muscular atrophy. *Neuromuscul Disord* 16:830-838.
- Baioni MT and Ambiel CR (2010) Spinal muscular atrophy: Diagnosis, treatment and future prospects. *J Pediatr (Rio J)* 86:261-270.
- Boemer F, Caberg JH, Beckers P, Dideberg V, di Fiore S, Bours V, Marie S, Dewulf J, Marcelis L, Deconinck N *et al.* (2021) Three years pilot of spinal muscular atrophy newborn screening turned into official program in Southern Belgium. *Sci Rep* 11:19922.
- Bürglen L, Lefebvre S, Clermont O, Burlet P, Viollet L, Cruaud C, Munnich A and Melki J (1996) Structure and organization of the human survival motor neurone (SMN) gene. *Genomics* 32:479-482.
- Chiang PW, Song WJ, Wu KY, Korenberg JR, Fogel EJ, Van Keuren ML, Lashkari D and Kurmit DM (1996) Use of a fluorescent-PCR reaction to detect genomic sequence copy number and transcriptional abundance. *Genome Res* 6:1013-1026.
- Chien YH, Chiang SC, Weng WC, Lee NC, Lin CJ, Hsieh WS, Lee WT, Jong YJ, Ko TM and Hwu WL (2017) Presymptomatic



- diagnosis of spinal muscular atrophy through newborn screening. *J Pediatr* 190:124-129.e1.
- D'Amico A, Mercuri E, Tiziano FD and Bertini E (2011) Spinal muscular atrophy. *Orphanet J Rare Dis* 6:71.
- Dangouloff T, Hiligsmann M, Deconinck N, D'Amico A, Seferian AM, Boemer F and Servais L (2023) Financial cost and quality of life of patients with spinal muscular atrophy identified by symptoms or newborn screening. *Dev Med Child Neurol* 65:67-77.
- D'Silva AM, Kariyawasam DST, Best S, Wiley V, Farrar MA and NSW SMA NBS Study Group (2022) Integrating newborn screening for spinal muscular atrophy into health care systems: An Australian pilot programme. *Dev Med Child Neurol* 64:625-632.
- Finkel RS, Sejersen T, Mercuri E and ENMC SMA Workshop Study Group (2017) 218th ENMC International Workshop: Revisiting the consensus on standards of care in SMA Naarden, The Netherlands, 19-21 February 2016. *Neuromuscul Disord* 27:596-605.
- Gillingwater TH, McWilliam C, Horrocks I, McWilliam K, Hamilton M, Fletcher E, Williams N, Smith S and Parson SH (2022) A call to introduce newborn screening for spinal muscular atrophy (SMA) in Scotland. *Scott Med J* 67:46-47.
- Guthrie R and Susi A (1963) A simple phenylalanine method for detecting phenylketonuria in large populations of newborn infants. *Pediatrics* 32:338-343.
- Gutierrez-Mateo C, Timonen A, Vaahtera K, Jaakkola M, Hougaard DM, Bybjerg-Grauholm J, Baekvad-Hansen M, Adamsen D, Filippov G, Dallaire S *et al.* (2019) Development of a multiplex real-time PCR assay for the newborn screening of SCID, SMA, and XLA. *Int J Neonatal Screen* 5:39.
- Kariyawasam DST, Russell JS, Wiley V, Alexander IE and Farrar MA (2020) The implementation of newborn screening for spinal muscular atrophy: The Australian experience. *Genet Med* 22:557-565.
- Kernohan KD, McMillan HJ, Yeh E, Lalaria M, Kowalski M, Campbell C, Dowling JJ, Gonorazky H, Marcadier J, Tarnopolsky MA *et al.* (2022) Ontario newborn screening for spinal muscular atrophy: The first year. *Can J Neurol Sci* 49:821-823.
- Kraszewski JN, Kay DM, Stevens CF, Koval C, Haser B, Ortiz V, Albertorio A, Cohen LL, Jain R, Andrew SP *et al.* (2018) Pilot study of population-based newborn screening for spinal muscular atrophy in New York state. *Genet Med* 20:608-613.
- Lee BH, Deng S, Chiriboga CA, Kay DM, Irumudomon O, Laureta E, Delfiner L, Treidler SO, Anziska Y, Sakonju A *et al.* (2022) Newborn screening for spinal muscular atrophy in New York State: Clinical outcomes from the first 3 years. *Neurology* 99:e1527-e1537.
- Lefebvre S, Bürglen L, Reboullet S, Clermont O, Burllet P, Viollet L, Benichou B, Cruaud C, Millasseau P and Zeviani M (1995) Identification and characterization of a spinal muscular atrophy-determining gene. *Cell* 80:155-165.
- Li L, Zhou WJ, Fang P, Zhong ZY, Xie JS, Yan TZ, Zeng J, Tan XH and Xu XM (2017) Evaluation and comparison of three assays for molecular detection of spinal muscular atrophy. *Clin Chem Lab Med* 55:358-367.
- Lunn MR and Wang CH (2008) Spinal muscular atrophy. *Lancet* 371:2120-2133.
- Matteson J, Wu CH, Mathur D, Tang H, Sciortino S, Feuchtbaum L, Bishop T, Sharma SC, Neogi P, Fitzgibbon I *et al.* (2022) California's experience with SMA newborn screening: A successful path to early intervention. *J Neuromuscul Dis* 9:777-785.
- Mercuri E, Bertini E and Iannaccone ST (2012) Childhood spinal muscular atrophy: Controversies and challenges. *Lancet Neurol* 11:443-452.
- Ministério da Saúde (1992) Portaria GM/MS nº 22 de 15 de janeiro de 1992 — Programa de Diagnóstico Precoce do Hipotireoidismo Congênito e Fenilcetonúria. *Diário Oficial da União, Brasília*.
- Ministério da Saúde (2001) Portaria GM/MS nº 822 de 06 de junho de 2001 — Programa Nacional de Triagem Neonatal. *Diário Oficial da União, Brasília*.
- Ministério da Saúde (2021) Lei nº 14.154, de 26 de maio de 2021, para aperfeiçoamento do Programa Nacional de Triagem Neonatal. *Diário Oficial da União, Brasília*.
- Motyl AAL and Gillingwater TH (2022) Timing is everything: Clinical evidence supports pre-symptomatic treatment for spinal muscular atrophy. *Cell Rep Med* 3:100725.
- Noguchi Y, Bo R, Nishio H, Matsumoto H, Matsui K, Yano Y, Sugawara M, Ueda G, Wijaya YOS, Niba ETE *et al.* (2022) PCR-Based screening of spinal muscular atrophy for newborn infants in Hyogo Prefecture, Japan. *Genes (Basel)* 13:2110.
- Ogino S and Wilson RB (2004) Spinal muscular atrophy: Molecular genetics and diagnostics. *Expert Rev Mol Diagn* 4:15-29.
- Pane M, Coratti G, Sansone VA, Messina S, Bruno C, Catteruccia M, Sframeli M, Albamonte E, Pedemonte M, D'Amico A *et al.* (2019) Nusinersen in type 1 spinal muscular atrophy: Twelve-month real-world data. *Ann Neurol* 86:443-451.
- Pane M, Coratti G, Pera MC, Sansone VA, Messina S, D'Amico A, Bruno C, Salmin F, Albamonte E, De Sanctis R *et al.* (2022) Nusinersen efficacy data for 24-month in type 2 and 3 spinal muscular atrophy. *Ann Clin Transl Neurol* 9:404-409.
- Romanelli Tavares VL, Monfardini F, Lourenço NCV, da Rocha KM, Weinmann K, Pavanello R and Zatz M (2021) Newborn screening for 5q Spinal Muscular Atrophy: Comparisons between real-time PCR methodologies and cost estimations for future implementation programs. *Int J Neonatal Screen* 7:53.
- Sawada T, Kido J, Sugawara K, Yoshida S, Ozasa S, Nomura K, Okada K, Fujiyama N, and Nakamura K (2022) Newborn screening for spinal muscular atrophy in Japan: One year of experience. *Mol Genet Metab Rep* 32:100908.
- Shih STF, Keller E, Wiley V, Farrar MA, Wong M and Chambers GM (2022) Modelling the cost-effectiveness and budget impact of a newborn screening program for spinal muscular atrophy and severe combined immunodeficiency. *Int J Neonatal Screen* 8:45.
- Strauss KA, Farrar MA, Muntoni F, Saito K, Mendell JR, Servais L, McMillan HJ, Finkel RS, Swoboda KJ, Kwon JM *et al.* (2022a) Onasemnogene abeparvovec for presymptomatic infants with two copies of SMN2 at risk for spinal muscular atrophy type 1: The Phase III SPRINT trial. *Nat Med* 28:1381-1389.
- Strauss KA, Farrar MA, Muntoni F, Saito K, Mendell JR, Servais L, McMillan HJ, Finkel RS, Swoboda KJ, Kwon JM *et al.* (2022b) Onasemnogene abeparvovec for presymptomatic infants with three copies of SMN2 at risk for spinal muscular atrophy: The Phase III SPRINT trial. *Nat Med* 28:1390-1397.
- Strunk A, Abbes A, Stuitje AR, Hettinga C, Sepers EM, Snetselaar R, Schouten J, Asselman FL, Cuppen I, Lemmink H *et al.* (2019) Validation of a fast, robust, inexpensive, two-tiered neonatal screening test algorithm on dried blood spots for spinal muscular atrophy. *Int J Neonatal Screen* 5:21.
- Sugarman EA, Nagan N, Zhu H, Akmaev VR, Zhou Z, Rohlf EM, Flynn K, Hendrickson BC, Scholl T, Sirko-Osadsa DA *et al.* (2012) Pan-ethnic carrier screening and prenatal diagnosis for spinal muscular atrophy: Clinical laboratory analysis of >72,400 specimens. *Eur J Hum Genet* 20:27-32.
- Talbot K and Tizzano EF (2017) The clinical landscape for SMA in a new therapeutic era. *Gene Ther* 24:529-533.

- Varga RE, Mumtaz R, Jahic A, Rudenskaya GE, Sánchez-Ferrero E, Auer-Grumbach M, Hübner CA and Beetz C (2012) MLPA-based evidence for sequence gain: Pitfalls in confirmation and necessity for exclusion of false positives. *Anal Biochem* 421:799–801.
- Velikanova R, van der Schans S, Bischof M, van Olden RW, Postma M and Boersma C (2022) Cost-effectiveness of newborn screening for spinal muscular atrophy in the Netherlands. *Value Health* 25:1696–1704.
- Vill K, Schwartz O, Blaschek A, Gläser D, Nennstiel U, Wirth B, Burggraf S, Röschinger W, Becker M, Czibere L *et al.* (2021) Newborn screening for spinal muscular atrophy in Germany: Clinical results after 2 years. *Orphanet J Rare Dis* 16:153.
- Vitte J, Fassier C, Tiziano FD, Dalard C, Soave S, Roblot N, Brahe C, Saugier-veber P, Bonnefont JP and Melki J (2007) Refined characterization of the expression and stability of the SMN gene products. *Am J Pathol* 171:1269–1280.
- Wang KC, Fang CY, Chang CC, Chiang CK and Chen YW (2021) A rapid molecular diagnostic method for spinal muscular atrophy. *J Neurogenet* 35:29–32.

*Associate Editor: Lavinia Schüler-Faccini*

*License information: This is an open-access article distributed under the terms of the Creative Commons Attribution License (type CC-BY), which permits unrestricted use, distribution and reproduction in any medium, provided the original article is properly cited.*

## Erratum: Neonatal screening for spinal muscular atrophy: A pilot study in Brazil

In the article “Neonatal screening for spinal muscular atrophy: A pilot study in Brazil”, with DOI number: 10.1590/1678-4685-GMB-2023-0126, published in the journal *Genetics and Molecular Biology*, 46(3 Suppl 1): e20230126, on page 1, **which reads:**

Simone Castro<sup>8</sup>

Marcondes Cavalcante França Junior<sup>9</sup>

<sup>8</sup>Universidade Federal do Rio Grande do Sul, Departamento de Farmácia, Porto Alegre, RS, Brazil.

### **Should be read:**

Simone Martins de Castro<sup>8</sup>

Marcondes Cavalcante França Junior<sup>10</sup>

<sup>8</sup>Universidade Federal do Rio Grande do Sul, Faculdade de Farmácia, Porto Alegre, RS, Brazil.