

The chemical composition of Amazonian plants (*)

A Catalogue, edited by Setor de Fitoquímica, INPA, Manaus, Amazonas

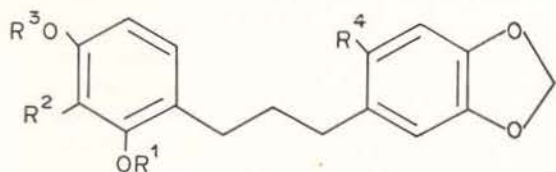
FAMILY :
MYRISTICACEAE

SPECIE :
Iryanthera polyneura

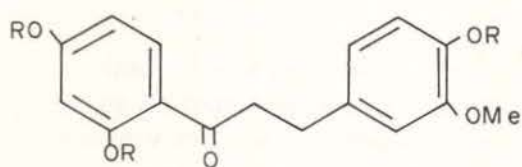
OCCURRENCE : Manaus, Amazonas
TRUNK WOOD :

Sitosterol
Pinocembrin

- 1-(2',4'-dihydroxyphenyl)-3-(3'',4''-methylenedioxyphenyl)-propane (1a)
1-(2',4'-dihydroxy-3'-methylphenyl)-3-(2''-methoxy-4'',5''-methylenedioxyphenyl)-propane (1b)
4,2',4'-trihydroxy-3-methoxydihydrochalcone (2)



$R^1 = R^2 = R^3 = R^4 = H$ (1a)
 $R^1 = R^3 = H, R^2 = Me, R^4 = OMe$ (1b)



$R = H$ (2)

REFERENCES :

1. M. Elita L. de Almeida, Raimundo Braz Filho M. Vittoria von Bülow João J. L. Correa, Otto R. Gottlieb, J. Guilherme S. Maia and Marcelo S. da Silva. (1979) *Phytochemistry* (in press).
2. Lima, R. A. de, Franca, N. C., Diaz D., P. P. and Gottlieb, O. R. (1975). *Phytochemistry* 14, 1831.

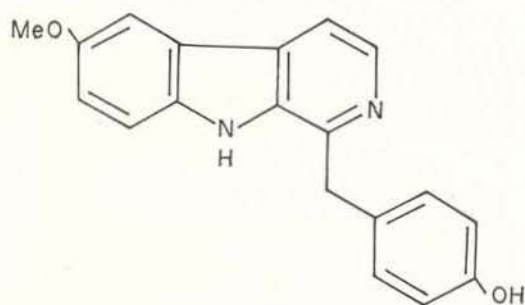
(*) — Contributions to this catalogue, which will be continued in subsequent issues of this Journal, are invited and should be submitted to address above.

FAMILY :
LAURACEAE

SPECIE :
Aniba santalodora

OCCURRENCE : Manaus, Amazonas
TRUNK WOOD :

Benzyl benzoate
Cecilin [1-p-Hydroxybenzyl-6-methoxy- β -carboline]



REFERENCE :

Leila M. G. Aguiar, Raimundo Braz Filho, Otto R. Gottlieb, J. Guilherme S. Maia, Sonildes L. V. Pinho and José R. de Sousa. (1979) *Phytochemistry* 18 (in press).