

# The chemical composition of Amazonian plants (\*)

A catalogue, edited by Setor de Fitoquímica, INPA, Manaus, Amazonas

FAMILY

SPECIE

SIMARCUBACEAE

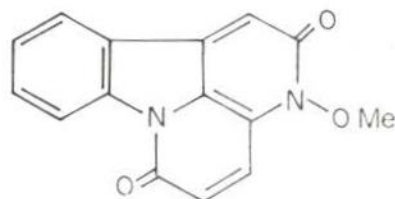
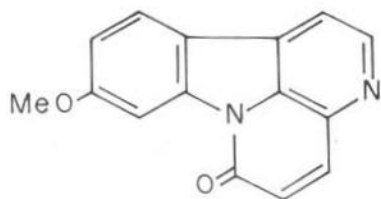
*Simaba cuspidata*  
Spruce ex Engl.

OCCURRENCE: Rio Negro, Amazonas

TRUNK WOOD:

8-Methoxycanthin-6-one (1)

3-Methoxycanthin-2,6-dione (2)



## REFERENCE:

A.M. Giesbrecht, H.E. Gottlieb, M.O.F. Goulart, R.A. de Lima and A. E. G. Sant'ana.  
*Phytochemistry* 19(2):313. 1980.

(\*) — Contributions to this catalogue, which will be continued in subsequent issues of this Journal, are invited, and should be submitted to address above.

FAMILY

SPECIE

LEGUMINOSAE

*Swartzia laevicarpa* Amsh.

OCCURRENCE: Manaus, Amazonas

TRUNK WOOD:

Sitosterol

Stigmasterol

8-hydroxy-5-methyl-3,4-dihydroxyisocoumarin

(6aR,11aR)-2,8-Dihydroxy-3,9-dimethoxypterocarpan

(6aR,11aR)-2,8-Dihydroxy-3,9,10-trimethoxypterocarpan

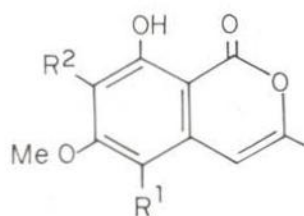
(6aR,11aR)-8-Hydroxy-3,4,9,10-tetramethoxypterocarpan

(6aR,11aR)-2,8-Dihydroxy-3,4,9,10-tetramethoxypterocarpan

5-Chloro-8-hydroxy-6-methoxy-3-methylisocoumarin (1a)

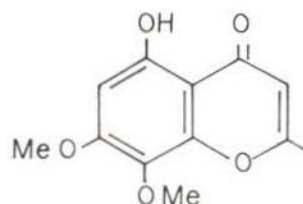
7-Chloro-8-hydroxy-6-methoxy-3-methylisocoumarin (1b)

5-Hydroxy-7,8-dimethoxy-2-methylchromone (2)



1a R<sup>1</sup> = Cl, R<sup>2</sup> = H

1b R<sup>1</sup> = H, R<sup>2</sup> = Cl



2

REFERENCE:

Raimundo Braz-Filho, Miguel P.L. de Moraes and Otto R. Gottlieb.  
*Phytochemistry* 19(9):2003. 1980.