

## Infective Endocarditis in Aortic Bicuspid Valve and at Aorta Coarctation

Wálmore Pereira de Siqueira Júnior, Maria Eduarda Menezes de Siqueira

Hospital Santa Isabel, Blumenau, SC - Brazil

A 21-year-old patient presented weight loss, shivering and dyspnea on mild exertion. Upper-limb and lower-limb systemic arterial pressure was 160x 60 mmHg and 110x40 mmHg, respectively. Presence of aortic ejective systolic murmur 4+/6+, aspiration diastolic murmur 2+/6+ on the left sternal border. The echocardiogram showed motile echogenic images in the aortic bicuspid valve (figure 1) with important failure and mobile vegetating lesion at the initial portion of the descending aorta at the coarctation level (figure 2), which presented a gradient of 70 mmHg. We draw attention to the uncommon association between mobile vegetation inside the aortic lumen and at the coarctation.

### Potential Conflict of Interest

No potential conflict of interest relevant to this article was reported.

### Sources of Funding

There were no external funding sources for this study.

### Study Association

This study is not associated with any post-graduation program.

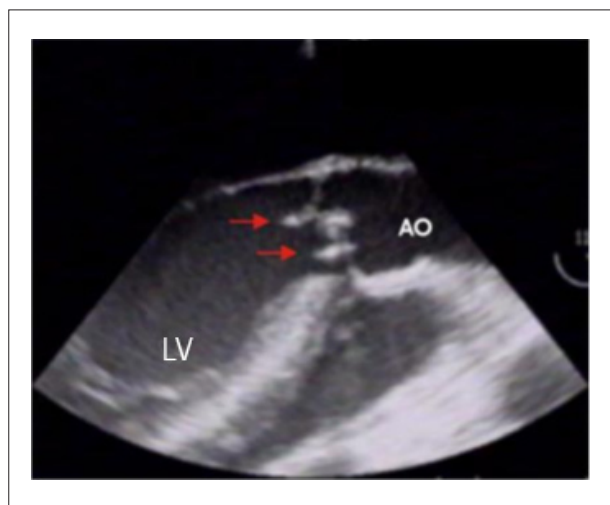


Figure 1 - Echocardiogram showing vegetation at the aortic bicuspid valve.



Figure 2 - Echocardiogram demonstrating vegetation at the aortic coarctation level.

### Key Words

Infectious endocarditis; aortic valve; aortic coarctation.

Mailing address: Wálmore Pereira de Siqueira Júnior •

Alameda Rio Branco, 520 – Centro – 89010-300 – Blumenau, SC, Brazil

E-mail: walmore@cardiol.br

Manuscript received on 03/26/08; revised manuscript received on 07/30/08; accepted on 09/11/08.