

Crossing Coronary Arteries

Marcelo Abramoff Continentino e Antonio Manoel R. F. Freitas

Hospital e Maternidade Frei Galvão, São Paulo, SP - Brazil

A 57 year-old patient with hypertension and diabetes admitted with atypical chest pain was submitted to 64-row coronary computed tomography angiography. The anterior descending and circumflex arteries originated directly from the aorta, crossing in their proximal portions. The patient also presented mild atheroma without significant luminal narrowing.

The anatomical variation in which the anterior descending and circumflex arteries originate directly from the aorta is present in about 1.0% of the population. However, coronary artery crossing is a very rare anomaly, with few cases reported and clinical consequences still unknown.

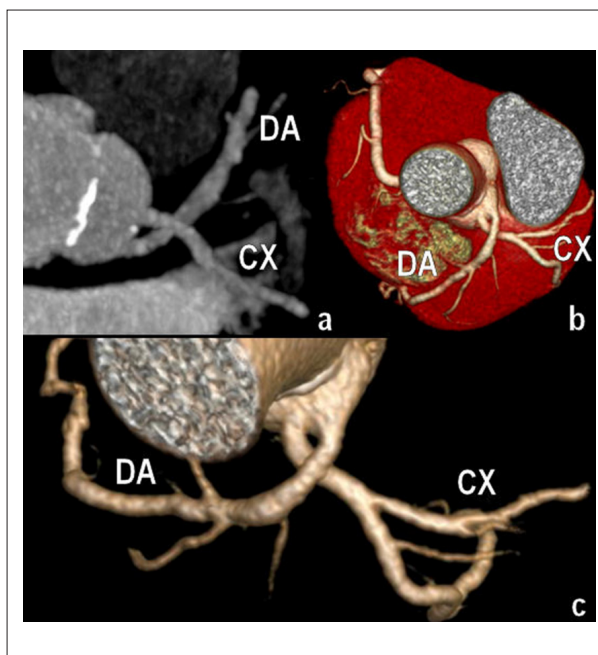


Figure 1 - Oblique image in MIP (Maximum Intensity Projection) (a) and three-dimensional reconstruction (b, c) showing the trajectory of the coronary arteries. DA - anterior descending artery; CX - circumflex.

Keywords

Coronary vessels; coronary vessel anomalies; computed tomography.

Mailing address: Marcelo Abramoff Continentino •

Alameda Itu, 846 AP 101 - Jardim Paulista - 01421-001 - São Paulo, SP - Brazil

E-mail: mabramoff@cardiol.br, marabra@ig.com.br

Manuscript received July 02, 2010; revised manuscript received September 14, 2010, accepted on November 05, 2010.