

Giant Right Atrial Mass Following Surgical Aortic Valve Replacement

Teresa Bastante and Fernando Alfonso

Hospital Universitario de La Princesa, Madrid – Spain

A 75-year-old man underwent elective biological aortic valve replacement. Two weeks after surgery, transthoracic echocardiography (TTE) showed a small pericardial effusion. On the following day, the patient suffered from syncope. A repeated TTE revealed a “giant” echo-dense mass (90x80 mm) occupying the entire right atrium and severely limiting tricuspid valve inflow. Although the initial differential diagnosis included the development of an intracavitary process, the rapidly-growing mass with a characteristic echo-lucent layer at its atrial aspect (consistent with the atrial wall and visceral pericardium) (arrows) led to the final diagnosis of a pericardial hematoma mimicking a huge atrial mass. Emergency surgical exploration confirmed the diagnosis.

Author contributions

Acquisition of data: Bastante T. Analysis and interpretation of the data: Bastante T. Writing of the manuscript: Bastante T, Alfonso F. Critical revision of the manuscript for intellectual content: Bastante T, Alfonso F. Supervision / as the major investigator: Alfonso F.

Potential Conflict of Interest

No potential conflict of interest relevant to this article was reported.

Sources of Funding

There were no external funding sources for this study.

Study Association

This study is not associated with any thesis or dissertation work.

Keywords

Aortic valve/surgery; Pericardial Effusion; Heart Atria/abnormalities.

Mailing Address: Fernando Alfonso •

Hospital Universitario de La Princesa. C. Diego de Leon, 62, Madrid.

Postal Code 28006. Madrid – Spain

E-mail: falf@hotmail.com

Manuscript received March 09, 2015; revised manuscript March 13, 2015; accepted March 24, 2015.

DOI: 10.5935/abc.20150066

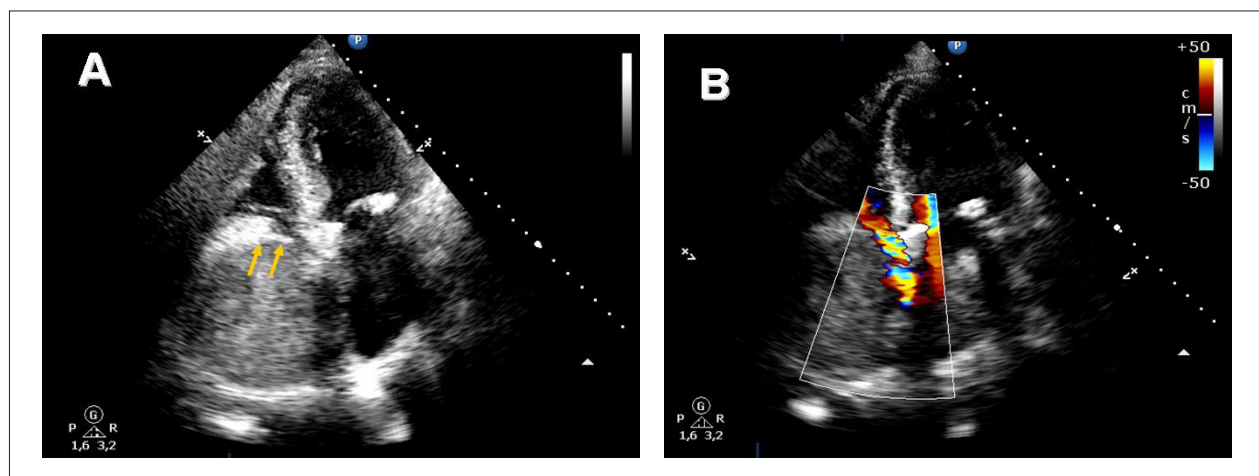


Figure 1 – Transthoracic echocardiography: giant eco-dense mass occupying the entire right atrium (Panel A) and severely limiting tricuspid valve inflow (Panel B). Atrial wall and visceral pericardium (arrows)