

## Ectopic hidradenoma papilliferum\*

Rogério Nabor Kondo<sup>1</sup>  
Isabela Peron Melhado<sup>2</sup>  
Cassio Rafael Moreira<sup>2</sup>  
Jefferson Crespigo<sup>3</sup>

DOI: <http://dx.doi.org/10.1590/abd1806-4841.20187572>

Dear Editor,

We report a case of a 36-year-old male patient with a two-month history of an asymptomatic, erythematous, 1 x 1cm papule of fibroelastic consistency on the left areola (Figure 1). The left axillary lymph nodes were not enlarged.

We performed an excisional biopsy of the papule for diagnosis. Histopathology revealed a dermal tumor with no connection to the overlying epidermis. The lesion contained cells with papillary folds, tubules, cystically dilated spaces, and lumen lined by columnar cells with decapitation secretion, compatible with hidradenoma papilliferum (HP) (Figures 2 and 3).

HP is a rare, benign, adnexal tumor that occurs almost exclusively in the anogenital region of female patients.<sup>1,4</sup> HP appears as solitary, asymptomatic, well-circumscribed, skin-colored or reddish-brown nodules measuring from 0.5 to 1cm. HP lesions that are not located in the anogenital area are referred to as ectopic HP.<sup>1,4,5</sup>

Many cases of HP have been reported since it was first described by Werth in 1878.<sup>5</sup> However, very few cases of ectopic HP have been reported in male patients.<sup>4</sup> Ectopic HP can occur on the eyelids, orbit, nose, breast, chest, abdomen, and scalp.<sup>4,5</sup>

The histogenesis for both anogenital and ectopic HP remains unclear. Although the presence of human papillomavirus (HPV) DNA has been identified in a few cases, it does not seem to play a role in the pathogenesis of HP. Histopathological findings show dermal tumors with no connection to the overlying epidermis, with papillary and tubular formations, cystically dilated spaces, and lumen lined by columnar cells with decapitation secretion. Such histopathology

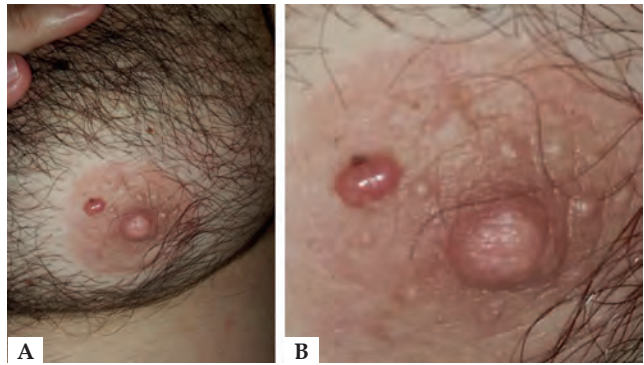


FIGURE 1: A - An erythematous papule on left areola . B - Detail of the lesion

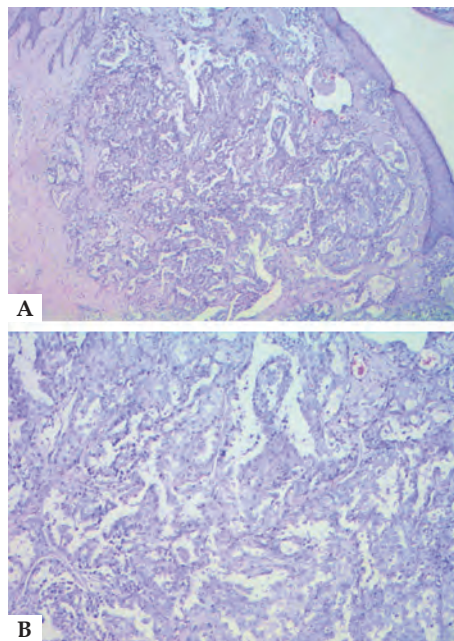


FIGURE 2:  
A - Microscopic examination: dermal tumor with papillary folds and no connection to the overlying epidermis (Hematoxylin & eosin, X100).  
B - Lumen lined by columnar cells with decapitation secretion. (Hematoxylin & eosin, X400)

findings are similar to those observed in intraductal papilloma of the breast and some authors believe that accessory mammary-like glands may have a role in the histogenesis of the tumor.<sup>5</sup>

The actual incidence and prevalence of ectopic HP is unknown due to the low number of cases reported. Kim *et al.* compiled the clinical data available from all 19 patients previously reported. Despite the small sample, some aspects are worth mentioning. The mean age of patients with ectopic HP ranged from 40 to 59 years (10 to 20 years more than the mean age for patients with anogenital HP). In contrast to anogenital HP, nearly one half of the patients with ectopic HP are men and lesions are located mainly on the head and neck.<sup>4</sup>

Histological examination is required for the accurate diagnosis of HP.<sup>5</sup> The differential diagnosis for ectopic HP includes benign adnexal tumors, such as apocrine hidrocystoma and syringocystadenoma papilliferum.<sup>5</sup> In our case, we included clinical differential diagnosis of basal cell carcinoma, epidermal cyst, and pyogenic granuloma.

Received 22 August 2017.

Accepted 26 November 2017.

\* Work conducted at Dermatology Service, Hospital Universitário Regional do Norte do Paraná; Universidade Estadual de Londrina, Londrina (PR), Brazil.

Financial support: None.

Conflict of interests: None.

<sup>1</sup> Discipline of Dermatology, Hospital Universitário Regional do Norte do Paraná, Universidade Estadual de Londrina, Londrina (PR), Brazil.

<sup>2</sup> Dermatology Unit, Hospital Universitário Regional do Norte do Paraná, Universidade Estadual de Londrina, Londrina (PR), Brazil.

<sup>3</sup> Laboratório Logos, Londrina (PR), Brazil.

MAILING ADDRESS:

Rogério Nabor Kondo

E-mail: [kondo.dermato@gmail.com](mailto:kondo.dermato@gmail.com)

©2018 by Anais Brasileiros de Dermatologia



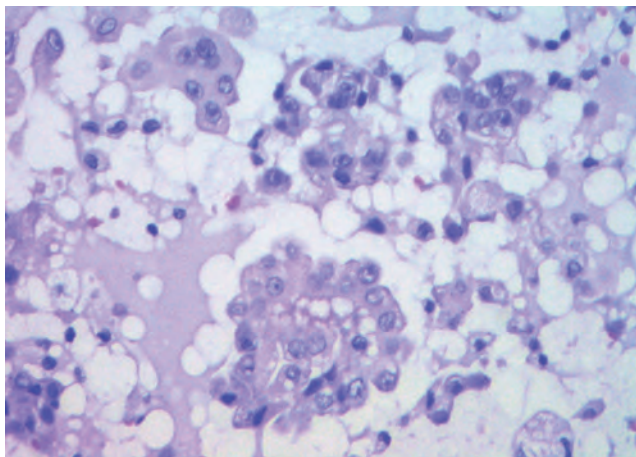


FIGURE 3: Histopathological: transverse section (Hematoxylin & eosin, X400)

Malignant transformation is very rare. Five cases of ductal carcinoma *in situ* arising within a pre-existing hidradenoma papilliferum have been documented, and two cases have reported invasive carcinomas arising from HP (malignant perianal papillary hidradenoma and vulvar adenosquamous carcinoma).<sup>5</sup>

The treatment of choice for ectopic HP is complete excision of the tumor,<sup>4</sup> as in the present case, and recurrence is typically attributed to incomplete excision.<sup>1,4</sup> □

#### REFERENCES

1. Tanaka M, Shimizu S. Hidradenoma papilliferum occurring on the chest of a man. *J Am Acad Dermatol*. 2003;48:S20-1.
2. Virgili A, Marzola A, Corazza M. Vulvar Hidradenoma Papilliferum. A review of 10.5-year's experience. *J Reprod Med*. 2000 ;45:616-8.
3. Handa Y, Yamanaka N, Inagaki H, Tomita Y. Large Ulcerated Perianal Hidradenoma Papilliferum in a Young Female. *Dermatol Surg*. 2003;29:790-2.
4. Kim YJ, Lee JW, Choi SJ, Kim SJ, Kim YJ, Jeon YS, ET AL. Ectopic Hidradenoma Papilliferum of the Breast: Ultrasound Finding. *J Breast Cancer*. 2011;14:153-5.
5. Theodosiou G, Zafeiriadou V, Papageorgiou M, Mandekou-Lefaki I. An unusual lesion in the right place. *Dermatol Pract Concept*. 2016;6:7-9.

Rogerio Nabor Kondo

 ORCID 0000-0003-1848-3314


Isabela Peron Melhado

 ORCID 0000-0003-2107-4482

Cassio Rafael Moreira

 ORCID 0000-0002-8781-1505

Jefferson Crespigio

 ORCID 0000-0002-2842-9349

## Chromoblastomycosis due to *Cladosporium langeronii*. Molecular diagnosis of an agent previously diagnosed as *Fonsecaea pedrosoi*\*

Edoardo Torres-Guerrero<sup>1</sup>

Roberto Arenas<sup>1</sup>

Rigoberto Hernández Castro<sup>2</sup>

DOI: <http://dx.doi.org/10.1590/abd1806-4841.20187644>

Dear Editor,

Chromoblastomycosis is a chronic, progressive, subcutaneous mycosis caused by dematiaceous (black) fungi clinically characterized by warty nodular lesions, generally on lower limbs but any region can be involved. The etiological agents mainly belong to three genera: *Fonsecaea*, *Phialophora* and *Cladophialophora* (*Cladosporium*). All of these pathogens are characterized by parasitic structures known as fumagoid cells or Medlar bodies. Most of affected individuals are rural workers who have a history of local trauma with decaying plant debris and frequently wear inadequate footwear, such as sandals. In 2010, we published a clinical case regarding a patient with squamous cell carcinoma secondary to longstanding lesions of chromoblastomycosis, who died due to multiorgan failure with hydroelectrolytic imbalance.<sup>1</sup> Based on phenotypic fungal characteristics, the culture had been previously identified as *Fonsecaea pedrosoi*. The culture was stored and now, ten years after the case release, we carried out polymerase chain reaction (PCR) amplification and sequencing of internal transcribed spacer (ITS) and ribosomal DNA (rDNA; Figures 1 and 2).<sup>2</sup> The 550 bp PCR product was purified, sequenced in both directions and submitted to the BLAST database at NCBI. The sequence showed a 100% homology with *Cladosporium langeronii* DTO-124-D5, R1, CBS189.54, among others (Figure 3).

In 2006, Zalar *et al.* described *C. langeronii*, along with seven new species sampled from a variety of substrates, as species related to the ubiquitous *Cladosporium sphaerospermum*. This description and phylogenetic analysis was based on the amplification and sequence

Received 14 September 2017.

Accepted 06 November 2017.

\* Work conducted at the Mycology Service and Ecology of Pathogen Agents Sector, Hospital "Dr. Manuel Gea González", Ciudad del Mexico, Mexico.

Financial support: None.

Conflict of interests: None.

<sup>1</sup> Mycology Service - Hospital "Dr. Manuel Gea González", Ciudad del Mexico, Mexico.

<sup>2</sup> Research Department, Ecology of Pathogen Agents Sector - Hospital "Dr. Manuel Gea González", Ciudad del Mexico, Mexico.

MAILING ADDRESS:

Edoardo Torres Guerrero

E-mail: [drlalo2005@hotmail.com](mailto:drlalo2005@hotmail.com)

©2018 by Anais Brasileiros de Dermatologia

**How to cite this article:** Kondo RN, Melhado IP, Moreira CR, Crespigio J. Ectopic hidradenoma papilliferum. *An Bras Dermatol*. 2018;93(3):474-5.