

Cutaneous leukemic infiltration following varicella - a case of Wolf's isotopic response*

Ana Brasileiro¹
Alexandre João¹

André Lencastre¹
Ana Fidalgo¹

DOI: <http://dx.doi.org/10.1590/abd1806-4841.20164686>

Abstract: Wolf's isotopic response designates the appearance of two subsequent unrelated dermatoses in the same anatomic location. We report the case of a 51-year-old man with a medical history of chronic lymphocytic leukemia without known extra-hematopoietic involvement. The patient developed a disseminated papulo-vesiculous eruption, diagnosed as varicella. Few days after recovering, an erythematous and violaceous papular dermatosis with histopathological examination compatible with leukemic infiltration appeared on the scars of previous herpetic lesions. Complete remission was obtained under systemic corticotherapy, without cutaneous recurrence or blastic transformation. Wolf's isotopic response is attributed to a localized immunologic imbalance following a certain stimulus. In this patient, herpetic infection acted as a local spur for inaural cutaneous leukemic infiltration, with no impact on the prognosis for the underlying disease.

Keywords: Chickenpox; Leukemic infiltration; Leukemia, lymphocytic, chronic, B-cell

INTRODUCTION

Wolf's isotopic response designates the appearance of a new dermatosis at the site of an already healed unrelated skin disease.¹ The initial dermatosis is usually a herpetic infection, in particular herpes zoster.² It acts as a presumed trigger for local immune dysregulation – excessive or defective immune responses – implicated in the subsequent dermatosis. The most common isotopic responses – which appear days or years after the initial disease has healed – are granulomatous reactions, malignant infiltrates, lichenoid dermatosis or infections.^{1,3}

CASE REPORT

A 51-year-old man diagnosed with B-cell chronic lymphocytic leukemia (B-CLL) without extra hematopoietic infiltration reported to the clinic. The patient had undergone several chemotherapy cycles – including rituximab, cyclophosphamide, fludarabine

and alemtuzumab – without achieving complete clinical remission. Three years after the diagnosis, while on cyclophosphamide and prednisolone, the patient developed a sudden widespread non-pruritic papulo-vesiculous dermatosis. Histopathological examination revealed intraepidermal vesicles with a mixed inflammatory infiltrate and solitary keratinocytes within the blisters (Figure 1). We also observed multinucleated giant cells with viral nuclear inclusions and margination of chromatin, diagnosing herpetic infection. Laboratory results, namely negative IgG anti-varicella-zoster virus, suggested varicella instead of disseminated zoster infection. The lesions healed under intravenous acyclovir 30 mg/kg/day for 8 days.

A few days after the herpetic lesions had healed, the patient developed a monomorphic erythematous-violaceous papular eruption on the scars of the previous herpetic lesions (Figure 2). Histopathological findings and immunohistochemistry studies

Received on 01.05.2015

Approved by the Advisory Board and accepted for publication on 14.09.2015

* Work performed at the Dermatology Department, Hospital S. António Capuchos - Centro Hospitalar Lisboa Central - Lisbon, Portugal.

Financial Support: None.

Conflict of Interest: None.

¹ Hospital S. António Capuchos - Centro Hospitalar Lisboa Central - Lisbon, Portugal.

©2016 by Anais Brasileiros de Dermatologia

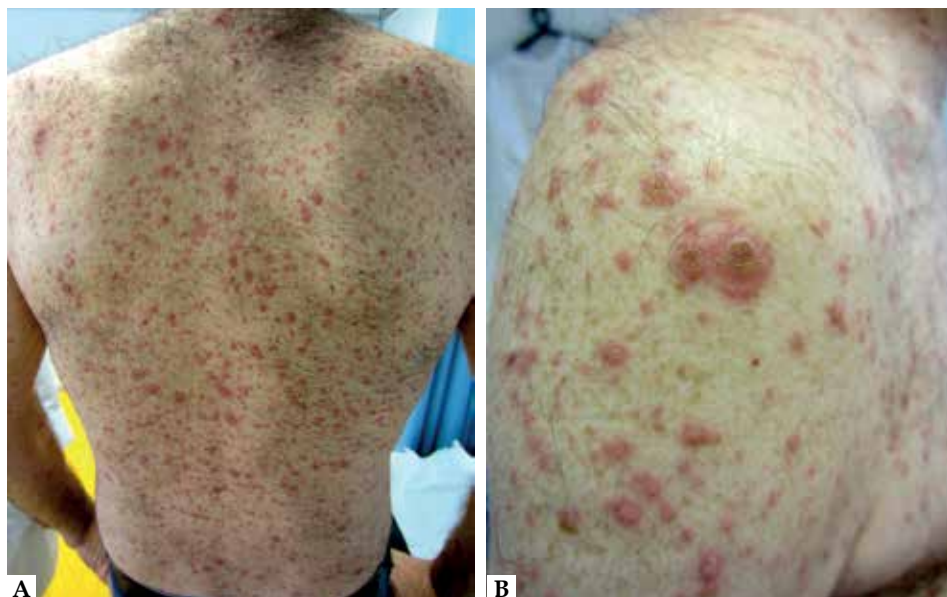


FIGURE 1:
A. Widespread papulo-vesiculous eruption; **B.** Grouped confluent vesicles and bullae

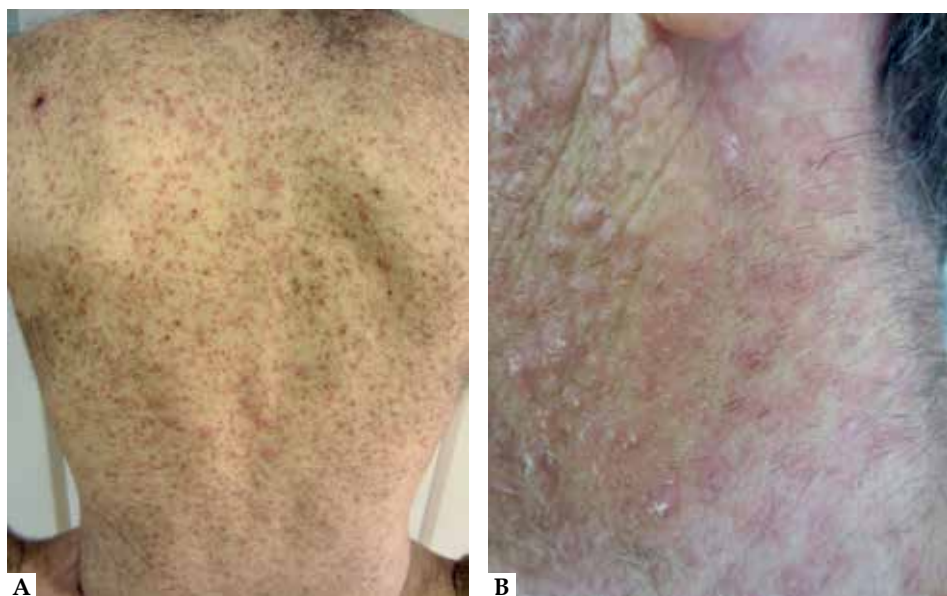


FIGURE 2:
A. Widespread erythematous-violaceous papular dermatosis; **B.** Multiple monomorphic papules *de novo*

confirmed B-cell leukemic infiltration (Figures 3 and 4). The lesions cleared under high-dose systemic corticotherapy and the patient remained stable without cutaneous recurrence or evidence of blastic transformation at a 24-month follow-up.

DISCUSSION

The skin is an active immune organ. Several immune-mediated reactions following different stimuli have been reported, such as the well-known Koebner isomorphic response.² On the other hand, Wolf's isotopic response designates the appearance of two subsequent unrelated dermatoses in the same anatomic location. Although the mechanism behind the second dermatosis is unknown, it has been suggested that localized immunologic imbalance follow-

ing a certain stimulus may cause the disease. Cutaneous leukemic infiltration after a viral infection has been attributed to recruitment of malignant B-lymphocytes to the skin in response to viral antigenic stimuli.⁴ Other authors discussed the hypothesis of neural damage induced by herpes virus, which would cause local immunosuppression and lead to neoplastic infiltration.⁵

Some cases of B-cell leukemic infiltrates following herpetic infection have been published in the last two decades. Information on follow-up and prognosis was reported for eight patients, of which six experienced resolution of cutaneous lesions, and the clinical prognosis did not appear to worsen.^{4,6,7} On the other hand, two patients had a poor outcome: one of them died of B-CLL after 24 months⁴ and the other patient - whose disease had been in remission for 3

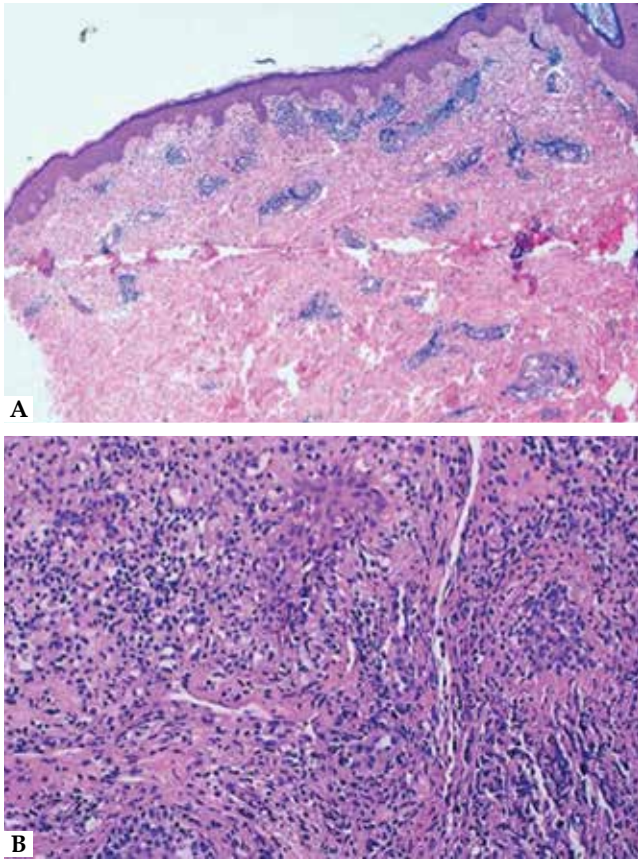


FIGURE 3: A. Superficial and deep dermal infiltrate (x40, H&E); B. Monomorphic perivascular and nodular atypical lymphocytic infiltrate (x200, H&E)

years before the varicella episode – experienced medullar involvement with poor response to combined chemotherapy, requiring allogenic bone marrow transplant.⁵ In our case, an already existing neoplastic proliferation arose *de novo* on the skin after a herpetic infection. The reported cutaneous leukemic infiltration had no effect on the disease course during follow-up time. Our results corroborate the previous observations of a better prognosis in patients with B-cell cutaneous leukemic infiltration following a herpetic infection perhaps because they reflect a cutaneous reactivity pattern to a stimulus rather than a true metastatic process.^{4,7} These observations should be kept in mind when selecting therapeutic approach in such cases. □

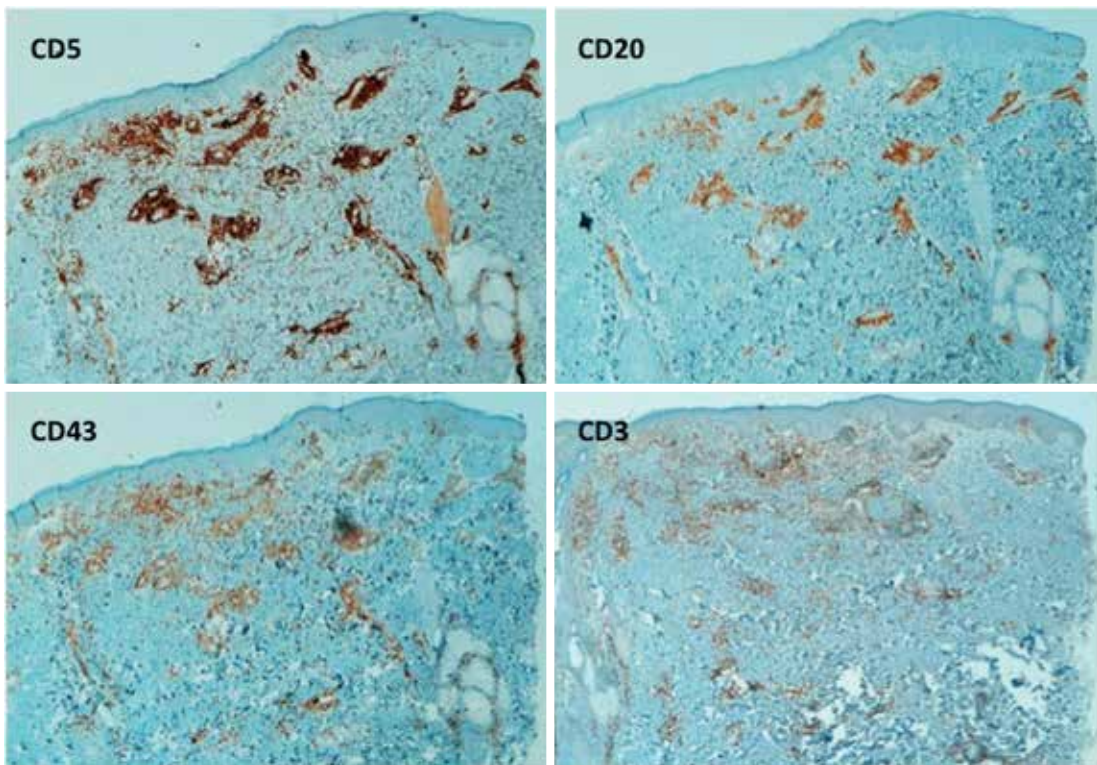


FIGURE 4: Positive immunological staining for CD5, CD20 and CD43 negative for CD3 (Hematoxylin - eosin, x40)

REFERENCES

1. Wolf R, Wolf D, Ruocco E, Brunetti G, Ruocco V. Wolf's isotopic response. *Clin Dermatol*. 2011;29:237-40.
2. Ruocco V, Brunetti G, Puca RV, Ruocco E. The immunocompromised district: A unifying concept for lymphoedematous, herpes-infected and otherwise damaged sites. *J Eur Acad Dermatol Venereol*. 2009;23:1364-73.
3. Mehra T, Metzler G, Bauer J, Köberle M, Garbe C. Isotopic response of graft versus host disease following herpes zoster infection: case report and review of the literature. *Acta Derm Venereol*. 2012;92:383-4.
4. Cerroni L, Kerl H. Cutaneous localization of B-cell chronic lymphocytic leukemia at the site of varicella/herpes virus eruptions. *J Am Acad Dermatol*. 1997;37:1022.
5. Jaka-Moreno A, López-Pestaña A, López-Núñez M, Ormaechea-Pérez N, Vildosola-Esturo S, Tuneu-Valls A, et al. Wolf's Isotopic Response: A Series of 9 Cases. *Actas Dermosifiliogr*. 2012;103:798-805
6. Doutre MS, Beylot-Barry M, Beylot C, Dubus P, Lafont ME, Belleannée G, et al. Cutaneous localization of B-cell chronic lymphocytic leukemia at the site of chickenpox. *J Am Acad Dermatol*. 1997;36:98-9.
7. Cerroni L, Zenahlik P, Kerl H. Specific cutaneous infiltrates of B-cell chronic lymphocytic leukemia arising at the site of herpes zoster and herpes simplex scars. *Cancer*. 1995;76:26-31.

MAILING ADDRESS:

Ana Brasileiro
Alameda Santo António dos Capuchos
1169-050 - Lisbon, Portugal.
E-mail: afmbrasileiro@gmail.com

How to cite this article: Brasileiro A, Lencastre A, João A, Fidalgo A. Cutaneous leukemic infiltration following varicella - a case of Wolf's isotopic response. *An Bras Dermatol*. 2016;91(5 Supl 1):S72-5.