

Thyroid collision tumor containing oncocytic carcinoma, classical and hobnail variants of papillary carcinoma and areas of poorly differentiated carcinoma

Marcos Tadashi Kakitani Toyoshima¹
<https://orcid.org/0000-0002-9146-4606>

Regina Barros Domingues²
<https://orcid.org/0000-0003-4564-9957>

Ibere Cauduro Soares²
<https://orcid.org/0000-0003-3830-4686>

Debora Lucia Seguro Danilovic¹
<https://orcid.org/0000-0002-4058-8027>

Larissa Costa Amorim³
<https://orcid.org/0000-0003-0433-1299>

Edla R. C. Cavalcante³
<https://orcid.org/0000-0003-4663-5100>

Fernanda F. Antonacio³
<https://orcid.org/0000-0002-7157-5181>

Felipe Santa Rosa Roitberg³
<https://orcid.org/0000-0003-2546-543X>

Ana Oliveira Hoff¹
<https://orcid.org/0000-0002-7058-6321>

¹ Serviço de Onco-Endocrinologia, Instituto do Câncer do Estado de São Paulo Octavio Frias de Oliveira, Hospital das Clínicas, Faculdade de Medicina, Universidade de São Paulo, São Paulo, SP, Brasil
² Departamento de Patologia, Instituto do Câncer do Estado de São Paulo Octavio Frias de Oliveira, Hospital das Clínicas, Faculdade de Medicina, Universidade de São Paulo, São Paulo, SP, Brasil
³ Departamento de Oncologia Clínica, Instituto do Câncer do Estado de São Paulo Octavio Frias de Oliveira, Hospital das Clínicas, Faculdade de Medicina, Universidade de São Paulo, São Paulo, SP, Brasil

SUMMARY

Collision tumors are rare and may comprise components with different behavior, treatments, and prognosis. We report an unprecedented case of aggressive thyroid collision tumor containing widely invasive oncocytic carcinoma (OC), classical and hobnail (HPTC) variants of papillary carcinoma, and poorly differentiated carcinoma (PDTC). The patient underwent total thyroidectomy, radioactive iodine therapy, and within months progressed with local recurrence, and pulmonary metastases requiring neck dissection, external radiotherapy and systemic treatment with sorafenib. The rapid progression, dedifferentiated metastatic lesions, and failure to treatments resulted in the patient's death. The great variety of histological types and the evolution of this case were a challenge for the management of metastatic disease. Widely invasive OC, HPTC and PDTC are considered to have a worse prognosis. HPTC has never been reported as a component of a collision tumor. HPTC and PDTC should call attention to a possible higher-grade transformation. *Arch Endocrinol Metab.* 2021;65(4):495-9

Correspondence to:

Marcos Tadashi Kakitani Toyoshima
 Serviço de Oncoendocrinologia do Instituto do Câncer do Estado de São Paulo
 Av. Dr. Arnaldo, 251, Cerqueira César
 01246-000 – São Paulo, SP, Brasil
marcos.tadashi@hc.fm.usp.br

Received on Dec/9/2020
 Accepted on Apr/21/2021

DOI: 10.20945/2359-3997000000389

INTRODUCTION

Differentiated thyroid carcinomas (DTC) are the most prevalent malignant endocrine tumors (1). Papillary (PTC) and follicular (FTC) thyroid carcinomas are the most prevalent DTC. In general, thyroid cancer has a good prognosis with 10-year overall survival rates for patients with PTC and FTC of 93% and 85%, respectively (2). However, some histopathological variants of follicular cell-derived thyroid cancer, such as (i) tall cell, (ii) columnar cell and (iii) hobnail variants of PTC; (iv) widely invasive FTC; and (v) poorly-

differentiated carcinoma (PDTC) are associated with more unfavorable outcomes, including increased risk of tumor-related death (3).

Oncocytes, also known as Hürthle cells, are large, polygonal, epithelial cells with an acidophilic cytoplasm, containing a great number of mitochondria, large hyperchromatic nucleus, and prominent nucleolus. Oncocytes are associated with benign conditions, as lymphocytic thyroiditis, Graves disease, and hyperplastic nodules in multinodular goiters. Malignant diseases that are associated with oncocytes include an oncocytic

variant of PTC and minimally invasive or widely invasive oncocytic carcinoma (OC) (4,5). OC accounts for about 5% of differentiated thyroid cancers (6,7) and was previously considered to be a variant of FTC; however, after thorough genomic analysis, it has been considered distinct from FTC (8). In addition, OC has a more aggressive behavior and is less avid to radioactive iodine compared to FTC (6). The metastatic spread of OC is mainly hematogenous, and therefore lymph node metastases are less common than PTC. The risk of recurrence of widely invasive OC is 73% (5) and the estimated 5- and 10-year disease-specific survival rates of metastatic OC are 81% and 60%, respectively (7).

In 2004, a Japanese study (9) showed that the loss of the cell polarity (hobnail appearance) could be a characteristic of poor cell differentiation and an increased risk of tumor recurrence in PTC. However, the hobnail variant of PTC (HPTC) was only described in 2009 (10), and since then, more than 100 HPTC cases have been described (11-13). Currently, HPTC is a recognized aggressive variant of PTC. The loss of polarity/cohesiveness with hobnail features in $\geq 30\%$ of tumor cells is one of the criteria for the diagnosis of HPTC (11). PTC with hobnail/micropapillary characteristics ($< 30\%$ of tumor cells with hobnail features) appears to be more aggressive than classic papillary carcinoma (14).

PDTC is an aggressive thyroid tumor, characterized by a partial loss of thyroid differentiation. Its morphological and behavioral characteristics are intermediate between DTC and anaplastic carcinoma. PDTC causes locally invasive cervical disease in more than 50%, metastasis to lymph nodes (LNs) in 50% to 85%, and distant metastasis in up to 85% of cases. Five-year disease-specific survival for PDTC patients has been reported at 66% (15).

Collision tumors, defined as two or more neoplasms coexisting in one anatomical site with distinct histology, are rare (16). Thyroid collision tumors are rare, and just over 40 case reports have been described (16-23).

We report an unprecedented case of aggressive thyroid collision tumor containing OC, classical and hobnail variants of PTC, and areas with PDTC.

CASE REPORT

A 63-year-old woman with a long-standing history of thyroid nodules was referred to our hospital. She knew the diagnosis of thyroid nodules for 25 years. Thyroid

ultrasonography (US) showed heterogeneous nodules with gross calcifications in the left lobe of the thyroid, the largest being 4.9 x 6.4 x 3.5 cm. A fine-needle aspiration (FNA) biopsy of this nodule revealed a follicular neoplasm with oncocytes (Bethesda category IV). The patient refused surgical treatment for 4 years, when she developed pain and dysphagia. She was then submitted to total thyroidectomy, and the histopathologic report depicted three components in the left lobe of the thyroid: widely invasive OC, measuring approximately 6.0 cm in the longest axis, in addition, classic variant PTC (CVPTC), but with hobnail component and foci of poorly-differentiated carcinoma (Figure 1, Figure 2 and Figure 3). The CVPTC measured 0.8 cm and the set of hobnail and poorly differentiated components measured 1.8 cm in the longest axis. The hobnail component of papillary carcinoma was characterized by the presence of papillary and micropapillary structures lined by cells with decreased nucleus-cytoplasm ratio, loss of cohesiveness, eosinophilic cytoplasm, apical nuclei and with evident nucleoli. The poorly differentiated component was characterized by the presence of solid blocks of cells, but without nuclear characteristics of papillary carcinoma, exhibiting intense atypia, vesicular nuclei with evident nucleoli, presence of mitoses (3 mitoses in 10 high magnification fields) and necrosis. Surgical margins were free of disease, and there was no extrathyroidal extension, angiolymphatic invasion, nor perineural invasion. Adenomatous goiter with areas of follicular hyperplasia, associated with chronic lymphocytic thyroiditis, was found around these tumors. The 7th American Joint Committee and International Cancer Control and the American Joint Committee on Cancer (AJCC/UICC) TNM (tumor-node-metastasis) thyroid cancer staging was defined as pT3pNxMx. The immunohistochemical profile (IHC) revealed focal thyroglobulin staining in all tumoral components (OC, CVPTC, HPTC and PDTC); TTF-1 positive in OC, and inconclusive in PTC; PAX8 was focal positive in OC (Figure 4), and inconclusive in CVPTC; p53 positive staining was observed in OC, HPTC and PDTC, and inconclusive in CVPTC.

BRAF mutational analysis by gene sequencing was performed on samples of all components of thyroid carcinoma, but no mutations were found.

The patient underwent radioactive iodine therapy (RAI) with ¹³¹I with 206 mCi (7622Mbq) upon thyroid hormone withdrawal. Serum TSH and thyroglobulin (TG) before RAI were 91.08 mcU/mL and

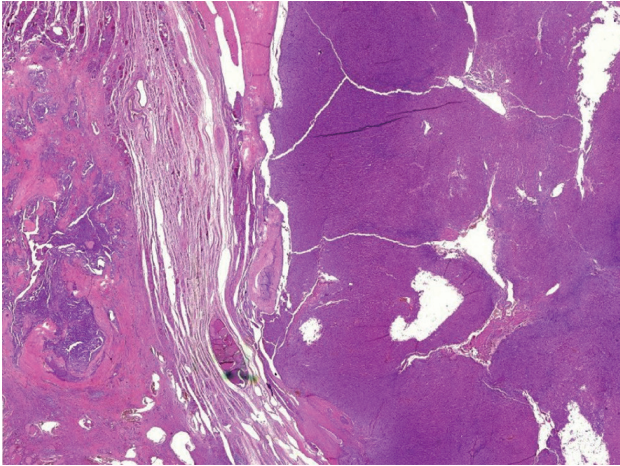


Figure 1. Photomicrograph of the surgical specimen showing stain, showing two components of the collision tumor. On the right side of the figure, oncocytic carcinoma with capsular invasion and on the left side, classic variant of papillary thyroid carcinoma (H&E, 25X).

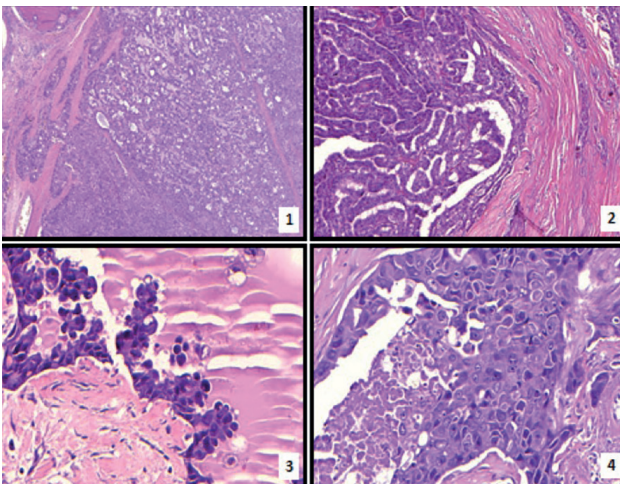


Figure 2. Photomicrographs of the tumor. Histopathological features of the four components of the collision tumor: (1) Oncocytic carcinoma with capsular invasion (H&E, 40x); (2) Conventional (classic) papillary carcinoma (H&E, 100x); (3) Hobnail variant of papillary thyroid carcinoma (H&E, 400x); (4) Poorly differentiated thyroid carcinoma (H&E, 400x).

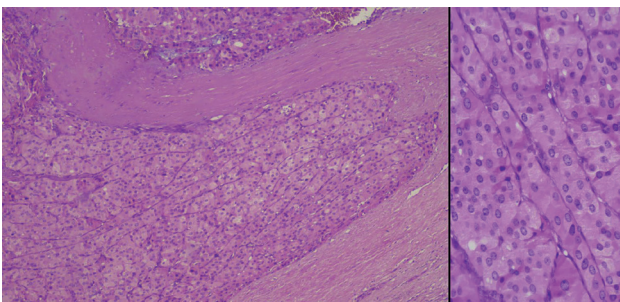


Figure 3. Higher magnification of oncocytic carcinoma with capsular invasion (H&E, 100x, 400x at right).

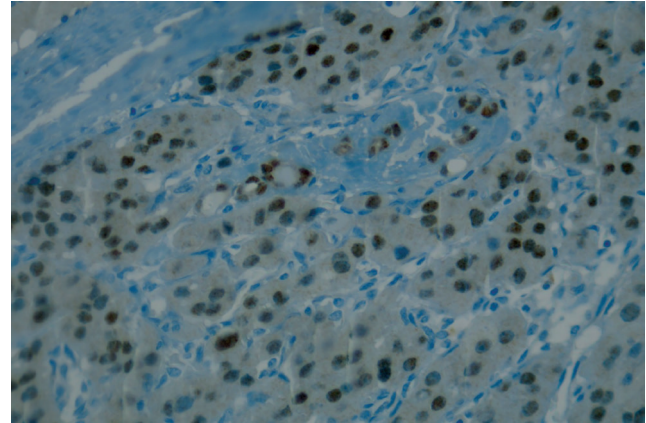


Figure 4. PAX8 positivity at oncocytic carcinoma (immunohistochemistry, 400x).

6.0 ng/mL, respectively. The post-treatment ^{131}I whole-body scan showed uptake in thyroid bed and possible central compartment neck LNs. The radioactive iodine uptake was 1.5%.

Six months later at a follow-up visit, serum TG and anti-TG antibodies were undetectable, neck US revealed heterogeneous LNs ranging from 1.3 to 1.6 cm in level IV bilaterally which were biopsied; cytology from both LNs was consistent with metastatic carcinoma, with morphological aspect similar to the PDTC, despite an undetectable TG from both LNs aspirate. The IHC panel showed positive focal immunoexpression for TTF-1, and negative for thyroglobulin and PAX8.

In the face of a recurrence from a poorly-differentiated tumor, a positron emission tomography-computed tomography (PET-CT) with fluorine-18 fluorodeoxyglucose (^{18}F -FDG) was obtained showing not only both LNs identified by the US (SUVmax 16.5%) but also several pulmonary nodules, some cavitating, the largest with 2.2 cm in its largest diameter (SUVmax 5.6%).

Lung biopsy revealed the presence of papillary pattern adenocarcinoma, with positive immunoexpression only for cytokeratin 7 (CK7), inconclusive for PAX8 and P53 and negative for thyroglobulin and TTF-1. Other markers indicative of origin in the breast, lower digestive tract or lungs were negative. The immunoexpression of PAX8 and p53 proved to be inconclusive.

Because of the significant progression of local disease, she underwent bilateral LN dissection (levels II-V), which path report revealed metastasis in 6 out of 49 LNs with extensive extracapsular invasion involving fibroadipose tissue and skeletal muscle and a 5-cm soft tissue metastasis

infiltrating skeletal muscle from levels II-IV on the left. IHC was consistent with a poorly-differentiated carcinoma of unknown primary source (p16, p63, CK7 and GATA-3 positive, c-erb-B2/HER-2, p53, WT1, BRST2, Cdx2, CK20 cytokeratin, PAX8, estrogen receptor, thyroglobulin, TTF-1 all negative). Within a month from this surgical procedure, she developed acute respiratory failure requiring emergency tracheostomy. Staging workup (computed tomography scan of the head, neck, and chest and ¹⁸F-FDG PET-CT) showed evidence of local recurrence, enlargement of pulmonary nodules, and new liver metastases. She underwent external-beam radiotherapy to the cervical area (cumulative dose of 20Gy) and initiated treatment with sorafenib 400mg twice a day with good tolerance but with no therapeutic response. She died two months later with the rapid progression of the pulmonary metastases.

DISCUSSION

We report a case of a patient with a collision tumor containing widely invasive OC, classical and hobnail variants of PTC, and areas with PDTC. Collision tumors can contain components with different aggressiveness, treatments, and prognosis, challenging their management (24). Widely invasive OC, HPTC, and PDTC are some of the thyroid cancers that are considered to have a worse prognosis among DTC (3).

Several hypotheses have been suggested as mechanisms for collision tumors: (i) a simple coincidence, (ii) one tumor predisposing to the other, (iii) a carcinogenic factor predisposing the tumors involved, or (iv) tumors that derive from stem cell remnants (17). Most reports of thyroid collision tumors consist of papillary and medullary thyroid carcinomas (16).

Our literature review found five case reports of collision tumors containing PTC and OC (19,25-27). As in our case report, three works also reported association with Hashimoto's thyroiditis (19,26,27). However, the relationship between Hashimoto's thyroiditis and the pathogenesis of thyroid cancer, especially PTC, remains controversial (28).

HPTC is a rare and quite aggressive variant of PTC and has not yet been described as a component of a collision tumor of the thyroid. The hobnail features have been reported in cases of poorly-differentiated and anaplastic thyroid carcinoma. The presence of these features should alert to a possible higher-grade transformation (29).

PDTC is associated with an increased risk of metastasis and tumor-related death (3,15). The presence of PDTC in the collision tumor is a sign of aggressiveness, poor prognosis and likely transformation of the more differentiated PTC (24).

The somatic mutation burden is relatively low in thyroid tumors, making it easier to understand their pathogenesis. Driver mutations are identified in more than 90% of thyroid cancers, and passenger mutations that can modify the biological behavior of the tumor can occur in many tumors (30). The main genes with mutations in the HPTC are *BRAF* and *TP53*. *RET/PTC1* rearrangements and in the *TERT* promoter mutations have also been reported (13). The most common mutations in PDTC are *TERT*, *BRAF*, *RAS*, and *TP53* mutations (15). The sample size of the cancer subtypes was limited for the genetic analysis of our patient, permitting only the analysis of the *BRAF* gene, which resulted without mutations. Genetic and epigenetic changes are involved in the initiation, progression, and dedifferentiation of cancers, including thyroid cancer. *BRAF* and *RAS* mutations are more involved in an earlier event of the tumorigenesis, and mutations in the *TP53* and *CTNNB1* genes, for example, in later events (1). This case called our attention to the rapid and severe progression of the disease. It led us to raise the hypothesis of the dedifferentiation of the metastases (1) and the successive transformations of the tumor, possibly from classical variant PTC to HPTC and from HPTC to PDTC. Unfortunately, a more thorough genetic analysis of the tumor was not possible. However, the IHC profile showing positivity for p53 in HPTC, and in poorly-differentiated carcinoma components suggest gaining of poor prognostic mutations. The lack of response to therapy and the short survival time observed in this case was similar to the expected survival observed in anaplastic thyroid carcinoma. However, it was not detected in any of the performed biopsies.

To conclude, this is a very rare case report of a thyroid collision tumor involving several histological patterns of carcinoma, including PTC with hobnail characteristics and possible progression of the component of PDTC with a very aggressive evolution.

Acknowledgment: The authors would like to thank Ms. Eliana Salgado Turri Frazzatto for sequencing the *BRAF* gene.

Ethics: The manuscript is in accordance with the institutional research committee. CAAE: 31514620.2.0000.0068

Financial support: none.

Authors' contributions: Toyoshima MTK wrote the initial research proposal and manuscript. Domingues RB and Soares IC performed the anatomopathological and immunohistochemistry procedures. Danilovic DLS was responsible for analyzing the genetic sequencing of the *BRAF* gene. Toyoshima MTK, Domingues RB, Amorim LC, Cavalcante ERC, Antonacio FF and Roitberg FSR were responsible for reviewing the medical record and reviewing the literature. All authors collectively reviewed/edited the manuscript and contributed to the discussion. The final version was approved collectively by all authors for publication.

Disclosure: no potential conflict of interest relevant to this article was reported.

REFERENCES

- Nikiforov YE, Nikiforova MN. Molecular genetics and diagnosis of thyroid cancer. *Nat Rev Endocrinol*. 2011;7(10):569-80.
- Krajewska J, Chmielik E, Jarzab B. Dynamic risk stratification in the follow-up of thyroid cancer: What is still to be discovered in 2017? *Endocr Relat Cancer*. 2017;24:R387-402.
- Haugen BR, Alexander EK, Bible KC, Doherty GM, Mandel SJ, Nikiforov YE, et al. 2015 American Thyroid Association Management Guidelines for Adult Patients with Thyroid Nodules and Differentiated Thyroid Cancer: The American Thyroid Association Guidelines Task Force on Thyroid Nodules and Differentiated Thyroid Cancer. *Thyroid*. 2016;26(1):1-133.
- Kushchayeva Y, Duh QY, Kebebew E, D'Avanzo A, Clark OH. Comparison of clinical characteristics at diagnosis and during follow-up in 118 patients with Hurthle cell or follicular thyroid cancer. *Am J Surg*. 2008;195(4):457.
- Ahmadi S, Stang M, Jiang XS, Sosa JA. Hurthle cell carcinoma: Current perspectives. *Onco Targets Ther*. 2016;9:6873-84.
- Jillard C, Youngwirth L, Scheri R, Roman S, Sosa J. Radioactive Iodine Treatment is Associated with Improved Survival for Patients with Hurthle Cell Carcinoma. *Thyroid*. 2016;26(7):959-64.
- Besic N, Schwarzbartl-Pevce A, Vidergar-Kralj B, Crnic T, Gazic B, Marolt Music M. Treatment and outcome of 32 patients with distant metastases of Hurthle cell thyroid carcinoma: A single-institution experience. *BMC Cancer*. 2016;16:162.
- Grani G, Lamartina L, Durante C, Filetti S, Cooper DS. Follicular thyroid cancer and Hurthle cell carcinoma: challenges in diagnosis, treatment, and clinical management. *Lancet Diabetes Endocrinol*. 2018;6(6):500-14.
- Kakudo K, Tang W, Ito Y, Mori I, Nakamura Y, Miyauchi A. Papillary carcinoma of the thyroid in Japan: Subclassification of common type and identification of low risk group. *J Clin Pathol*. 2004;57(10):1041-6.
- Motosugi U, Murata SI, Nagata K, Yasuda M, Shimizu M. Thyroid papillary carcinoma with micropapillary and hobnail growth pattern: a histological variant with intermediate malignancy? *Thyroid*. 2009;19(5):535-7.
- Ambrosi F, Righi A, Ricci C, Erickson LA, Lloyd RV, Asioli S. Hobnail Variant of Papillary Thyroid Carcinoma: a Literature Review. *Endocr Pathol*. 2017;28(4):293-301.
- Teng L, Deng W, Lu J, Zhang J, Ren X, Duan H, et al. Hobnail variant of papillary thyroid carcinoma: Molecular profiling and comparison to classical papillary thyroid carcinoma, poorly differentiated thyroid carcinoma and anaplastic thyroid carcinoma. *Oncotarget*. 2017;8(13):22023-33.
- Watantrige-Fernando S, Vianello F, Barollo S, Bertazza L, Galuppini F, Cavedon E, et al. The Hobnail variant of Papillary Thyroid Carcinoma: clinical/molecular characteristics of a large monocentric series and comparison with conventional histotypes. *Thyroid*. 2018;28(1):96-103.
- Asioli S, Erickson LA, Righi A, Lloyd RV. Papillary thyroid carcinoma with hobnail features: Histopathologic criteria to predict aggressive behavior. *Hum Pathol*. 2013;44(3):320-8.
- Ibrahimspasic T, Ghossein R, Shah JP, Ganly I. Poorly Differentiated Carcinoma of the Thyroid Gland: Current Status and Future Prospects. *Thyroid*. 2019;29(3):311-21.
- Ryan N, Walkden G, Lazic D, Tierney P. Collision tumors of the thyroid: A case report and review of the literature. *Head Neck*. 2015;37(10):E125-9.
- Takano K, Kikuchi K, Matsumiya H, Himi T. Collision tumor of the thyroid: follicular carcinoma plus papillary carcinoma plus adenomatous goiter. *World J Med Surg Case Rep*. 2013;2:21-5.
- Plauche V, Dewenter T, Walvekar RR. Follicular and Papillary Carcinoma: A Thyroid Collision Tumor. *Indian J Otolaryngol Head Neck Surg*. 2013;65(Suppl 1):S182-4.
- Samiee-Rad F, Farajee S, Torabi E. Concurrence of papillary thyroid carcinoma and Hurthle cell carcinoma in an Iranian woman with Hashimoto's thyroiditis. *Iran J Pathol*. 2019;14(4):342-6.
- Wang X, Cui XY, Fang N, Chen WL, Yu H, Zhu W. Papillary thyroid carcinoma and laryngeal squamous cell carcinoma manifesting as a collision tumor of the neck: A case report. *Oncol Lett*. 2013;6(6):1616-8.
- Gurkan E, Gurbuz Y, Tarkun I, Canturk Z, Cetinarlan B. Mixed medullary-papillary carcinoma of the thyroid: Report of two cases and review of the literature. *Indian J Pathol Microbiol*. 2014;57(4):598-602.
- Fulciniti F, Vuttariello E, Calise C, Monaco M, Pezzullo L, Chiofalo MG, et al. Combined Papillary and Mucoepidermoid Carcinoma of the Thyroid Gland: a Possible Collision Tumor Diagnosed on Fine-Needle Cytology. Report of a Case with Immunocytochemical and Molecular Correlations. *Endocr Pathol*. 2015;26:140-4.
- Thomas VP, George R. Collision tumors of the thyroid: Review of literature and report of a case of papillary-Follicular collision tumor. *Thyroid Res Pract*. 2018;15(2):60-4.
- Dworkin-Valenti J. Aggressive Thyroid Gland Carcinoma: A Case Series. *Arch Otolaryngol Rhinol*. 2017;3(4):129-37.
- Sinno S, Choucair M, Nasrallah M, Wadi L, Jabbour MN, Nassif S. Activating BRAF Mutations Detected in Mixed Hurthle Cell Carcinoma and Multifocal Papillary Carcinoma of the Thyroid Gland: Report of an Unusual Case and Review of the Literature. *Int J Surg Pathol*. 2016;24(6):519-24.
- Fellegara G, Rosai J. Signet ring cells in a poorly differentiated Hurthle cell carcinoma of the thyroid combined with two papillary microcarcinomas. *Int J Surg Pathol*. 2007;15(4):388-90.
- Navya NO, Magdalene KF, Satheesh GP. Synchronous Hurthle Cell Carcinoma and Papillary Carcinoma in a Patient with Hashimoto's Thyroiditis: A Rare Case Report. *Middle East J Cancer*. 2014;5(4):221-4.
- Molnár C, Molnár S, Bedekovics J, Mokánszki A, Györy F, Nagy E, et al. Thyroid Carcinoma Coexisting with Hashimoto's Thyroiditis: Clinicopathological and Molecular Characteristics Clue up Pathogenesis. *Pathol Oncol Res*. 2019;25:1191-7.
- Amacher AM, Goyal B, Lewis JS, El-Mofty SK, Chernock RD. Prevalence of a hobnail pattern in papillary, poorly differentiated, and anaplastic thyroid carcinoma: A possible manifestation of high-grade transformation. *Am J Surg Pathol*. 2015;39:260-5.
- Prete A, Borges de Souza P, Censi S, Muzza M, Nucci N, Sponziello M. Update on Fundamental Mechanisms of Thyroid Cancer. *Front Endocrinol*. 2020;11:102.