

Carotid artery dissection *plus* subdural hematoma after a roller-coaster ride

Dissecção arterial carotídea e hematoma subdural após passeio em montanha-russa

Ana Luíza Vieira de Araújo¹, Leandro Tavares Lucato², Gisela Tinone¹, Hélio Alberto Pereira Leitão-Filho², Fábio Luji Yamamoto¹, Adriana Bastos Conforto^{1,3}

A 31-year-old woman with history of antiphospholipid syndrome treated with warfarin reported two days after a roller-coaster ride, sudden onset of paresthesias in the right side of the face and in the right hand, followed by headache. Neuroimaging results are shown in Figures 1 and 2.

The “blood/fluid level” represented by the interface between plasma and sedimented blood (Figure 1) can be seen in hemorrhages related to bleeding disorders, among other causes¹. We suspect that the sudden head and neck movements during the roller-coaster ride contributed to the remarkably unusual combination of subdural hematoma and carotid artery dissection (Figure 2) in this patient.

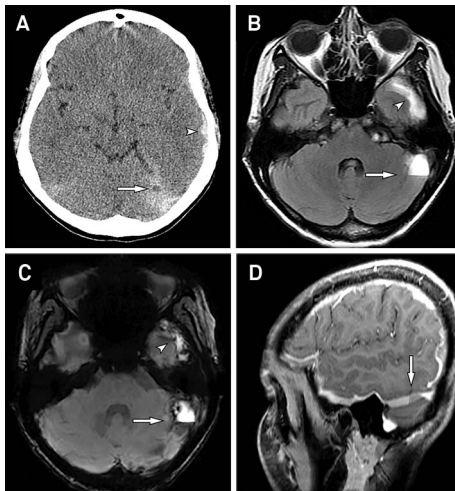


Figure 1. (A) Initial head CT shows subdural hematomas in the left temporal region (arrowhead) and in the left tentorium (arrow), where a blood-fluid level can be observed; (B) Follow-up brain MR: axial FLAIR; and (C) SWI and sagittal postcontrast T1-weighted images demonstrate more clearly the same findings, the blood-fluid level (arrows in B to D) and the temporal subdural hematoma (arrowheads, B and C).



Figure 2. Digital subtraction angiography, oblique view, shows dissection of the proximal left internal carotid artery (arrow). There is an intimal flap and a patent false lumen.

Reference

- Mittal MK, Burkholder DB, Wijdicks EF. Blood-fluid level on computed tomography head: a sign of warfarin-associated intraparenchymal hemorrhage. *Am J Emerg Med.* 2012;30(9):2079.e1-2. <http://dx.doi.org/10.1016/j.ajem.2011.10.015>

¹Divisão de Neurologia Clínica, Hospital das Clínicas, Faculdade de Medicina, Universidade de São Paulo, São Paulo SP, Brazil;

²Instituto de Radiologia, Hospital das Clínicas, Faculdade de Medicina, Universidade de São Paulo, São Paulo SP, Brazil;

³Hospital Israelita Albert Einstein, São Paulo SP, Brazil.

Correspondence: Ana Luíza Vieira de Araújo; Hospital das Clínicas, Faculdade de Medicina, Universidade de São Paulo; Av. Dr. Enéas C. Aguiar, 255 / 5084; 05403-000 São Paulo SP, Brasil; E-mail: anaraujo19@yahoo.com.br.

Authors' contributions: The authors Ana Luíza Vieira de Araújo, Adriana Bastos Conforto and Leandro Tavares Lucato wrote the manuscript. Gisela Tinone, Fábio Luji Yamamoto and Hélio Alberto Pereira Leitão Filho critically reviewed the manuscript. All authors had full access to the data.

Conflict of interest: There is no conflict of interest to declare.

Received 02 August 2014; Received in final form 21 August 2014; Accepted 09 September 2014.