



Environmental Microbiology

Promotion of iron nutrition and growth on peanut by *Paenibacillus illinoisensis* and *Bacillus* sp. strains in calcareous soil



Di Liu¹, Qianqian Yang¹, Ke Ge, Xiuna Hu, Guozhen Qi, Binghai Du, Kai Liu, Yanqin Ding*

PGPR Laboratory, Department of Microbiology, Shandong Agricultural University, 61 Daizong Street, Tai'an, Shandong, China

ARTICLE INFO

Article history:

Received 20 July 2016

Accepted 11 February 2017

Available online 4 June 2017

Associate Editor: Ieda Mendes

Keywords:

Plant growth-promoting
rhizobacteria

Peanut

Paenibacillus illinoisensis

Siderophores

Iron

ABSTRACT

This study aimed to explore the effects of two siderophore-producing bacterial strains on iron absorption and plant growth of peanut in calcareous soil. Two siderophore-producing bacterial strains, namely, YZ29 and DZ13, isolated from the rhizosphere soil of peanut, were identified as *Paenibacillus illinoisensis* and *Bacillus* sp., respectively. In potted experiments, YZ29 and DZ13 enhanced root activity, chlorophyll and active iron content in leaves, total nitrogen, phosphorus and potassium accumulation of plants and increased the quality of peanut kernels and plant biomass over control. In the field trial, the inoculated treatments performed better than the controls, and the pod yields of the three treatments inoculated with YZ29, DZ13, and YZ29 + DZ13 (1:1) increased by 37.05%, 13.80% and 13.57%, respectively, compared with the control. Based on terminal restriction fragment length polymorphism analysis, YZ29 and DZ13 improved the bacterial community richness and species diversity of soil surrounding the peanut roots. Therefore, YZ29 and DZ13 can be used as candidate bacterial strains to relieve chlorosis of peanut and promote peanut growth. The present study is the first to explore the effect of siderophores produced by *P. illinoisensis* on iron absorption.

© 2017 Sociedade Brasileira de Microbiologia. Published by Elsevier Editora Ltda. This is an open access article under the CC BY-NC-ND license (<http://creativecommons.org/licenses/by-nc-nd/4.0/>).

Introduction

Iron is an essential trace mineral for plants. Most of the iron in the soil exists as ferric iron (Fe³⁺), which cannot be absorbed by plants. The effective iron content in the soil is very low,

especially in calcareous soil; thus, plant iron deficiency is a serious global problem.¹ Peanut is one of the most important oil crops and cash crops in China. The northern region is one of the largest cultivated areas in China and is composed of sandy alkaline soil. Due to the sensitivity to iron, iron-deficiency chlorosis in peanut frequently occurs. This disease

* Corresponding author.

E-mail: dyq@sdau.edu.cn (Y. Ding).

¹ These authors contributed equally to this manuscript.

<http://dx.doi.org/10.1016/j.bjm.2017.02.006>

1517-8382/© 2017 Sociedade Brasileira de Microbiologia. Published by Elsevier Editora Ltda. This is an open access article under the CC BY-NC-ND license (<http://creativecommons.org/licenses/by-nc-nd/4.0/>).

has become an important limiting factor for peanut yield and quality.² Therefore, it is extremely urgent to find a safe, effective and economical approach to relieve iron-deficiency chlorosis in peanut.

A set of microbes has been discovered to be able to synthesize and secrete siderophores, a group of small molecular compounds (molecular weight: 1–2 kDa) that chelate Fe³⁺ at high specificity to absorb iron in the surrounding environment.³ The Fe³⁺-siderophore can be recognized and absorbed by many types of plant and is vital for iron absorption, especially in calcareous soil. In the past years, the possible implication of siderophores produced by plant growth promoting rhizobacteria (PGPR) has been considered as a potential way to alleviate iron-deficiency chlorosis and improve plant growth. Many studies focus on the role of *Pseudomonas* in promoting plant iron intake. For example, Manwar et al. have discovered that the siderophore pyoverdine produced by *Pseudomonas aeruginosa* increases chlorophyll content, percentage germination, root ramification, nodulation, height and foliage of groundnut. Siderophores produced by *Pseudomonas putida* are able to enhance the chlorophyll content of peanut in calcareous soil.⁴ Siderophores produced by *P. putida* P3 have been found to enhance the chlorophyll content and the presence of ⁵⁹Fe in the roots of peanut in nutrient solution.⁵ Furthermore, siderophores produced by some fungi have also drawn much attention. For instance, the siderophore mixture produced by *Penicillium chrysogenum* is able to increase the chlorophyll content of cucumber and maize under hydroponic conditions.⁶ Rhizoferrin, siderophores secreted by *Rhizopus arrhizus*, can induce normal growth in plants with iron deficiency chlorosis.⁷ However, reports on the effect of *Paenibacillus* sp. on iron absorption of plants, especially under calcareous soil conditions, are limited. In addition, all of the aforementioned experiments were conducted in the laboratory or iron-deficient indoor conditions, which were quite different from the outdoor natural conditions.

In this study, we hypothesized that siderophore-producing *Paenibacillus* sp. can promote the iron absorption of plant in calcareous soil, thus promoting plant growth. To confirm this hypothesis, potted assays and field trial were performed to investigate the effects of two siderophore-producing and spore-producing strains on iron absorption and peanut growth in calcareous soil in indoor and outdoor natural conditions. This study was expected to provide a basis for preventing iron-deficiency chlorosis of peanut using a biological method.

Materials and methods

Medium used in the assays

LB medium was used to activate and culture the isolates for the identification of strains. This medium contained 1% tryptone, 0.5% yeast extract, 1% NaCl and 1.5% agar.

Bean sprouts medium was used to prepare the inocula of the isolates and contained 1% bean sprouts, 3% saccharose and 0.8% (NH₄)₂SO₄.

CAS (chrome azurol S) medium was used to evaluate the siderophore production of the isolates and was carried out by the Schwyn method.⁸

Used bacterial strains and strain identification

The two strains, namely, YZ29 and DZ13, were cultivated on LB plates in a constant temperature incubator at 37 °C for 24 h. These strains were subjected to morphological observation, physiological and biochemical determination (such as fermentation of saccharides and hydrolysis of starch and gelatin)⁹ and analysis of 16S rRNA gene sequences.

The DNA of the two strains was extracted using a commercially available bacteria DNA extraction kit (Bacteria DNA Kit, Tiangen, Beijing, China). Genomic DNA samples were subjected to 16S rDNA amplification using fluorescent primers 27F and 1492R. Amplified DNA was purified using a commercially available kit (Common DNA Product Purification Kit, Tiangen, Beijing, China). PCR amplified fragments were then subjected to detection in Sangon Biotech (Shanghai) Company (Shanghai, China). A phylogenetic tree based on 16S rRNA gene sequences was constructed using Molecular Evolutionary Genetics Analysis (MEGA) 4.0 software (available at: <http://www.megasoftware.net>).¹⁰

Siderophore-producing performance test

The two strains were isolated from the peanut rhizosphere soil by other researchers in our laboratory with the methods of Wang,¹¹ and they have been detected to produce more siderophores than other isolates, including actinomycetes. To determine the siderophore-producing ability of these two strains, they were inoculated using sterile toothpicks on the CAS plates and cultivated at a constant temperature incubator at 37 °C for 3 days to 5 days and were checked for the presence or absence of orange circles surrounding the bacteria.

Peanut cultivars

Weihua No. 8 (*Arachis hypogaea* L., vulgaris) was used in the pot assay in 2012. Baisha 1016 (*A. hypogaea* L., vulgaris) was used in the pot assay in 2013. Luhua No. 14 (*A. hypogaea* L., vulgaris) was used in the field assay. These three cultivars are all susceptible to iron deficiency.

Soil used in the assays

Soil used in the pot assay in 2012

Calcareous soil was collected from the plough layer of a farmland in Jinan, East China (36°28'N, 116°45'E). The soil was composed of 18.53 g kg⁻¹ organic carbon, 100.75 mg kg⁻¹ NO₃⁻, 4.04 mg kg⁻¹ NH₄⁺, 22.89 mg kg⁻¹ rapidly available P, 96.31 mg kg⁻¹ rapidly available K, 2.318 mg kg⁻¹ available iron (DTPA-Fe), 1.6648 mg kg⁻¹ available zinc (DTPA-Zn), 0.7076 mg kg⁻¹ available copper (DTPA-Cu) and 3.32 mg kg⁻¹ available manganese (DTPA-Mn).

Soil used in the pot assay in 2013

The soil used in the pot assay was also obtained from the plough layer of a farmland in Jinan, East China. The soil

was composed of 19.89 mg g⁻¹ organic matter, 97.02 mg kg⁻¹ NO₃⁻, 9.05 mg kg⁻¹ NH₄⁺, 19.75 mg kg⁻¹ rapidly available P, 106.31 mg kg⁻¹ rapidly available K and 2.016 mg kg⁻¹ available iron (DTPA-Fe) and exhibited a strong calcareous reaction.

Soil used in the field trial in 2013

The field trial was conducted in a farmland in Jinan City, East China (36°28'N, 116°45'E). The soil had the following composition: 21.93 mg g⁻¹ organic matter, 104.02 mg kg⁻¹ NO₃⁻, 5.05 mg kg⁻¹ NH₄⁺, 17.68 mg kg⁻¹ rapidly available P, 103.64 mg kg⁻¹ rapidly available K and 2.153 mg kg⁻¹ available iron (DTPA-Fe) and exhibited a strong calcareous reaction.

Preparation for the Inocula of YZ29 and DZ13

To activate YZ29 and DZ13 preserved on agar slant culture medium, we inoculated the two strains into 10 mL of liquid LB and cultivated on a rotary shaker at 180 × g and 37 °C for 12 h. The seed solution was then inoculated into 200 mL of liquid medium (LB medium in pot assays, bean sprouts medium in field assay) with 1% final concentration and fermented on a rotary shaker at 180 × g and 37 °C for 48 h. The fermentation liquor was centrifuged at 8000 × g for 10 min, and the supernatant was discarded. Moderate sterile deionized water was added to the precipitate to obtain a 10⁸ cfu mL⁻¹ bacterial suspension.

Methods of applying the bacteria

Seed soaking

Screened plump peanut seeds were dipped in bacterial suspension for 30 min and dried in the shade before sowing.

Root irrigation

Bacterial suspension per plant was applied once directly into the soil near the roots after germination and before or after blossom (25 mL per plant in pot assays, 200 mL per plant in field assay).

Experimental design

Experimental treatments

The following four treatments were used: no inoculation (C), YZ29 inoculation (Y), DZ13 inoculation (D) and dual inoculation of YZ29 and DZ13 (Y + D).

Pot assay in 2012

The pot assay was performed in a greenhouse. Each treatment was applied to three pots. Ten seeds were sown in each pot (34 cm × 32 cm), one seed per hole. After germination, in order to furthest reduce individual differences of plants, four seedlings with similar growth status were maintained in each pot. Pots were randomly arranged. Plants were watered every 1–2 days to maintain appropriate relative water content of the soil. Each pot was applied with equal volume of deionized water. During the whole growth period, no agrochemicals were applied. At each growth stage, one plant was sampled from each pot.

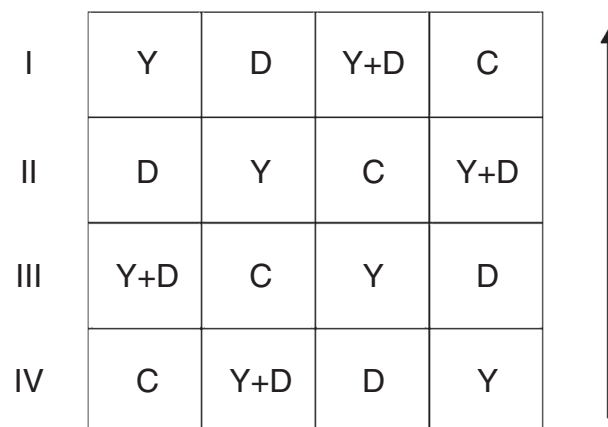


Fig. 1 – General arrangement of blocks in the field assay. I, II, III and IV represent the four replicates; the arrow represents the direction of peanut lines. C: control, received no inoculation; Y: received YZ29 inoculation; D: received DZ13 inoculation; Y + D: received YZ29 and DZ13 inoculation.

Pot assay in 2013

The pot assay was performed in an open space. Inoculation treatments were the same as the assay in 2012. Each treatment was applied to four pots. Ten seeds were sown in each pot (34 cm × 32 cm), one seed per hole. After germination, in order to furthest reduce individual differences of plants, four seedlings with similar growth status were maintained in each pot. Pots were randomly arranged. Plants were watered every 1–2 days to maintain appropriate relative water content of the soil. Each pot was applied with equal volume of deionized water. During the whole growth period, no agrochemicals were applied. At each growth stage, one plant was sampled from each pot.

Field trial

The field trial was conducted in a farmland in Jinan City, East China (36°28'N, 116°45'E) from May to September 2013. Inoculation treatments were the same as the assay in 2012 and were conducted in a randomized complete block design. Each treatment had four replicates. Each replicate had an area of 15 m² and three peanut lines (approximately 225 holes, three seeds per hole). Row-to-row and plant-to-plant spacing were maintained at 30 and 20 cm, respectively. The replicates were arranged as Fig. 1. During the whole growth period, no agrochemicals and additional artificial watering were applied to the farmland.

Analysis of chlorophyll concentration

Chlorophyll was extracted by soaking 100 mg of fresh young leaves in 25 mL of mixed liquor of acetone and ethyl alcohol (1:1) at 50 °C for 2–3 h. Chlorophyll concentration was measured at 663 and 645 nm with a spectrophotometer (Spectrumlab 22pc, Leng Quang Tech, Shanghai, China) using the Mackinney method.¹²

Determination of iron concentration in leaves

Iron was extracted by soaking 100 mg of dry young leaves in 25 mL of 1 mol mL⁻¹ hydrochloric acid at room temperature for 24 h. Iron concentrations of the extracted samples were measured using an atomic absorption spectrophotometer (NOVAA 300, Analytikjena, Jena, Germany).

Total nitrogen, phosphorus and potassium contents of plants

Plant shoots and roots of the peanut in each growth period were dried at 80 °C for more than 72 h and subsequently ground for nitrogen, phosphorus and potassium analyses. Sample liquid was prepared by the sulfuric acid hydrogen peroxide digestion method.¹³ The total potassium content of plant samples was analyzed using FP6430 flame spectrophotometer (Shanghai Analytical Instrument Factory, Shanghai, China). The total nitrogen and phosphorus contents of plant samples were analyzed using Bran+ Luebbe AutoAnalyzer 3 flow-injection analyser (Technicon Industrial Systems, Elmsford, NY, USA).

Determination of root activity

In each growth period, roots of all sampled peanut plants were harvested to determine root activity by the methylene blue adsorption method. Intact root samples were sequentially stained in three beakers containing 5 mL of 0.075 mg mL⁻¹ methylene blue solution for 1.5 min and then removed. The cleaned solution (0.5 mL) in the three beakers was respectively diluted 15 times and subsequently measured at 660 nm using a spectrophotometer (Spectrumlab 22pc, Leng Quang Tech, Shanghai, China).

Statistics of plant biomass and yield factors

In each growth period, peanut plants from different treatments were harvested to determine dry weight. The roots were washed twice with deionized water, and then the plants were dried at 80 °C to a constant weight. When peanut plants reached maturity, peanut pods from different treatments were harvested to determine the percentage of full pods and total weight of 100 fresh pods. The pods were dried at 80 °C until the weight was constant, then percentage of full pods, kernel rate and yield were calculated.

Analysis of peanut quality

At harvest time, peanuts from different treatments were harvested and dried at 80 °C for more than 72 h. Peanut kernels were ground to determine protein and crude fat. Protein content was measured using the Kjeldahl method.¹⁴ Crude fat content was determined with the Soxhlet extractor method.¹⁵

Analysis of bacterial community diversity

The terminal restriction fragment length polymorphism (T-RFLP) analysis method¹⁶ was used to analyze the bacterial community diversity of soil samples surrounding the roots of

peanut plants that were subjected to different treatments in each growth period.

Detection of 16S rDNA sequences of soil samples

DNA of soil samples was extracted using a commercially available soil DNA extraction kit (Soil DNA Kit, Omega, USA). Genomic DNA samples were subjected to 16S rDNA amplification using fluorescent primers 27F-FAM (5'-FAM-AGAGTTTGATCMTGGCTCAG-3') and 1492R (5'-GGTACCTTGTTACGACTT-3') and 1492R (Sangon Biotech Company, Shanghai, China). The conditions of PCR amplification were as follows: 94 °C (5 min); 30 cycles at 94 °C (30 s), 55 °C (30 s), and 72 °C (1.5 min); and 72 °C (5 min).¹⁷ Amplified DNA was purified using a commercially available kit (Common DNA Product Purification Kit, Tiangen, Beijing, China) before restriction digestion. PCR-amplified fragments were digested with the restriction enzymes *Msp* I, *Hha* I and *Alu* I at 37 °C for 5 h, and digestion was terminated at 65 °C for 15 min. Digestion products were subjected to short tandem repeat (STR) detection on an ABI 3730 DNA Sequencer (Applied Biosystems, Foster City, CA, USA).

Analysis of T-RFLP map

Analysis of T-RFLP map was conducted based on Dunbar¹⁸ and Lukow¹⁹ methods. Bio-Dap software²⁰ was used to determine the Shannon–Wiener diversity index, Margalef index and Simpson index to calculate the bacterial community of each soil sample. Based on the results of the T-RFLP map, species with speculated T-RF peaks were predicted using Web-based Phylogenetic Assignment Tool.²¹

Statistical analysis

Data were presented as mean ± standard deviation from three separate experiments performed in duplicate. Statistical analysis was performed using the SPSS 19.0 software (SPSS, Chicago, USA). One-way analysis of variance (ANOVA) followed by Duncan test was used to compare group means. Differences were considered significant if $p < 0.05$.

Results

Test for siderophore production

Siderophore production of the strains YZ29 and DZ13 was tested. In both strains, orange circles visibly surrounded the bacterial colonies (Fig. 2), indicating that YZ29 and DZ13 were able to produce siderophores.

Identification of strains

Morphological characteristics

The bacterial colonies of YZ29 were round, ivory yellow, slightly uplift and smooth, and the margin of the colony was soigne. The thalli of YZ29 were rod shaped, and its size was (0.5–0.7) μm × (1.2–2.0) μm. YZ29 could produce spores and was determined to be Gram-positive.

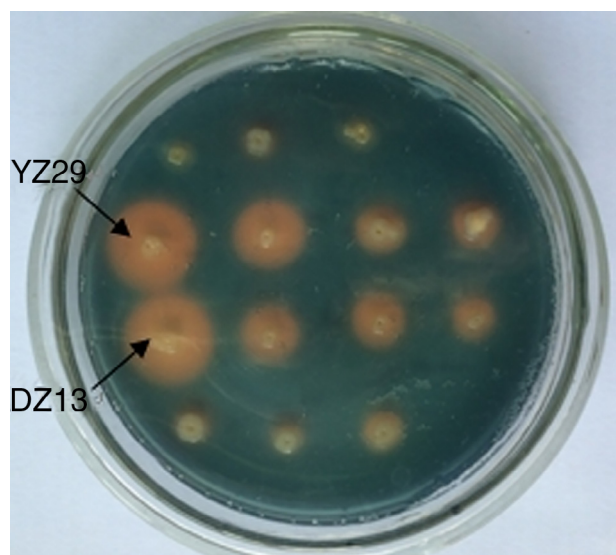


Fig. 2 – Orange circles produced by strains YZ29 and DZ13 on the CAS (chrome azurol S) plate.

The bacterial colonies of DZ13 were irregular, filamentous and oyster white, and the surface was dry. The thalli of DZ13 were bacilliform, and its size was $(0.7\text{--}0.9)\ \mu\text{m} \times (1.2\text{--}1.5)\ \mu\text{m}$. DZ13 could produce ovate spores and was found to be Gram-positive.

Physiological and biochemical characteristics

The physiological and biochemical characteristics of YZ29 and DZ13 were determined (Table 1). The results were compared with Bergey's Manual of Determinative Bacteriology (eighth edition).

Each characteristic of YZ29 was the same as in the type strain *Paenibacillus illinoisensis*. Some characteristics of DZ13, such as fermentation of L-Arabinose, hydrolysis of starch and growth at 50°C , were contrary to that of the type strain *Bacillus mycooides*. The aforementioned differences may be due to the different growth environments.

Analysis of 16S rRNA gene sequences

The 16S rRNA gene sequences of YZ29 and DZ13 were submitted to GenBank and got accession numbers KJ951054 and KJ951053, respectively. A phylogenetic tree was created based on 16S rRNA gene sequences (Fig. 3). YZ29 and *P. illinoisensis* (AB073192) were in the same minimum branch. Moreover, the sequence similarity of 16S rRNA gene sequences of YZ29 and *P. illinoisensis* (JQ579623) was 99% based on sequence alignment with BLAST. DZ13 and *B. mycooides* (EU285664) were in the same minimum branch, and the sequence similarity of 16S rRNA gene sequences of DZ13 and *B. mycooides* (EU285664) was 97% based on sequence alignment with BLAST. Considering the aforementioned results of the morphological characteristics and physiological and biochemical characteristics, YZ29 and DZ13 were identified as *P. illinoisensis* and *Bacillus* sp., respectively.

Table 1 – Physiological and biochemical characteristics of YZ29 and DZ13.

Characteristic	YZ29	<i>Paenibacillus illinoisensis</i>	DZ13	<i>Bacillus mycooides</i>
Catalase	+	+	+	+
Oxidase	–	–	+	ND
Growth in anaerobic condition	+	+	+	+
V-P test	–	ND	+	+
Nitrate reduction	–	–	+	+
Fermentation of:				
D-Glucose	+	+	+	+
Mannitol	–	ND	–	–
L-Arabinose	+	+	+	–
Glycerinum	+	+	+	ND
Utilization of citrate	–	–	–	d
Hydrolysis of:				
Starch	+	+	–	+
Gelatin	+	ND	+	+
Tyrosine	–	ND	+	d
Growth at:				
4°C	+	ND	–	d
30°C	+	ND	+	+
50°C	–	ND	+	–
5% NaCl	–	–	+	ND
7% NaCl	–	ND	–	d

Note: *Paenibacillus illinoisensis* and *Bacillus mycooides* are type strains. +, positive; –, negative; d, 11%–89% strains are positive; ND, not detected. Analysis of 16S rRNA gene sequences.

Chlorophyll and active iron contents in leaves

In the potted plants, chlorophyll content in the three inoculated treatments were compared with that in the control plants at the four stages (Fig. 4A). At the seedling and blossom stages, significant increase ($p < 0.05$) was observed in the chlorophyll content in Y-treated and Y + D-treated plants compared with the control. At the pod stage, the chlorophyll content in all of the four treatments decreased compared with the blossom stage, whereas, chlorophyll content in the three inoculated treatments was significantly higher than that in the control ($p < 0.05$). At the maturation stage, the chlorophyll content in Y-treated and D-treated plants was still markedly higher ($p < 0.05$) compared with the control plants. Strikingly, the chlorophyll content in D-treated plants was lower than that in Y-treated plants at the seedling and blossom stages (Fig. 4A).

Furthermore, the active iron content of leaves in the three inoculated treatments in pots were compared with that in the control plants in the whole growth period (Fig. 4B). YZ29 significantly increased the active iron content in leaves by 19.57%, 17.65%, 44.12% and 34.97% ($p < 0.05$), respectively, compared with the control in the four growth periods. Besides, DZ13 enhanced the active iron content in leaves by 16.30%, 2.94%, 9.56% and 17.79%, respectively, compared with the control. In addition, the active iron contents in the leaves of Y-treated plants were obviously higher than those of D-treated plants at

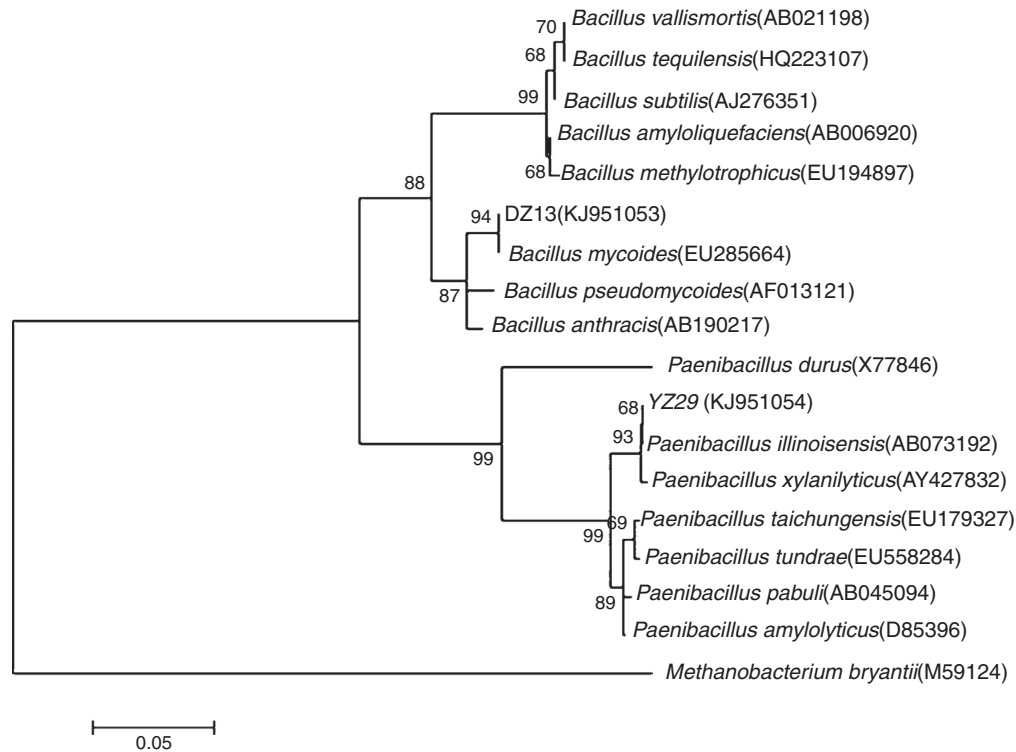


Fig. 3 – Phylogenetic tree showing the relationships between YZ29 and other *Paenibacillus* strains as well as DZ13 and other *Bacillus* strains based on 16S rRNA genes.

the blossom, pod and maturation stages, indicating that YZ29 had a higher capacity than DZ13 in promoting iron uptake (Fig. 4B).

However, under field conditions, no significant differences ($p > 0.05$) were detected in terms of chlorophyll content and active iron content of peanut leaves in the four treatments (Fig. 4C and D).

Root activity

Root total absorption area can directly reflect the root system ability to absorb moisture and nutrients and root active absorption area can reflect the root activity. In the first pot assay, root activities, which include the total absorption area (TAAR) and active absorption area (AAAR) were measured in the four growth periods (Fig. 5).

TAAR and AAAR were both higher in Y-treated, D-treated, and Y + D-treated plants than that in the control plants. At the seedling and blossom stages, both of TAAR and AAAR were the highest (0.647 m^2 , 0.214 m^2 , 1.001 m^2 , and 0.342 m^2) in Y-treated plants and significantly increased ($p < 0.05$) by 180.09%, 296.30%, 179.61% and 180.33% compared with the control, respectively. At the pod stage, both of TAAR and AAAR were significantly higher in Y-treated and Y + D-treated plants than those in the other two treatments. TAAR in Y-treated plants significantly increased ($p < 0.05$) by 43.93% compared with the control; AAAR in Y + D-treated plants significantly increased ($p < 0.05$) by 36.74% compared with the control. At the maturation stage, no significant differences ($p > 0.05$) were observed in

TAAR in the four treatments. However, AAAR in Y-treated and Y + D-treated plants were significantly higher (0.435 m^2 and 0.504 m^2) than that in the other two treatments and significantly increased ($p < 0.05$) by 73.31% and 100.80%, respectively, compared with the control plants. As a result, YZ29 and DZ13 enhanced the root activity, which may contribute to a stronger ability to absorb moisture and nutrients, and the effect of YZ29 was better than that of DZ13.

Total nitrogen, phosphorus and potassium contents of plants

In the potted plants, nutrient accumulation of peanut in the three inoculated treatments varied compared with that in the control treatment (Fig. 6A–C). The nutrient accumulation of the four treatments ultimately exhibited the same pattern with chlorophyll concentration and active iron content in leaves.

At the seedling stage, significant differences ($p < 0.05$) were observed in nitrogen, phosphorus and potassium accumulation of Y-treated and Y + D-treated plants compared with the control plants. Nitrogen, phosphorus and potassium accumulation of Y-treated plants was the highest at the seedling stage and increased by 41.53%, 32.01% and 70.88% compared with the control (C) plants, respectively. At the blossom stage, nitrogen, phosphorus and potassium accumulation of Y + D-treated plants significantly increased ($p < 0.05$) (by 39.10%, 56.61% and 68.52%, respectively) compared with the control plants. At the pod stage, pronounced differences ($p < 0.05$) were observed

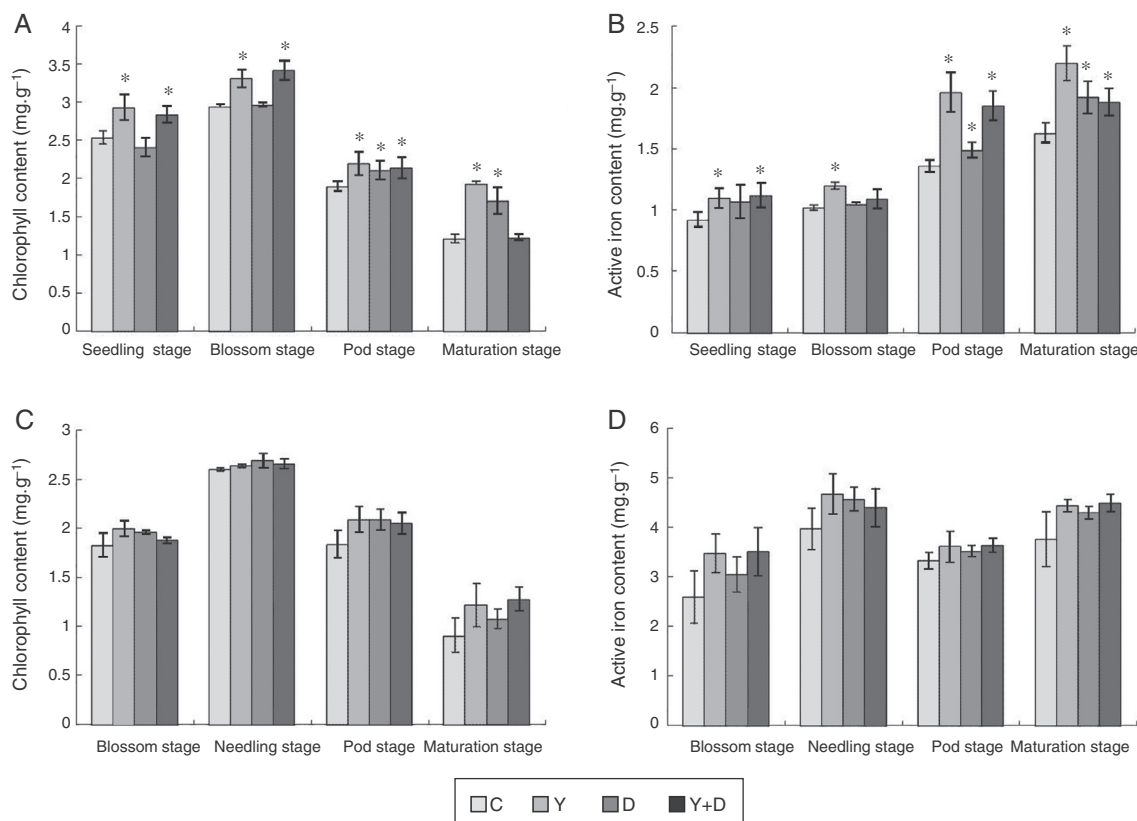


Fig. 4 – Chlorophyll and active iron contents in the leaves of different treatments in each growth period. (A) Chlorophyll content of leaves in each growth period in the pot assay in 2013. (B) Active iron contents of leaves in each growth period in the pot assay in 2013. (C) Chlorophyll content of leaves in each growth period in the field trial. (D) Active iron contents of leaves in each growth period in the field trial. Data were presented as mean \pm standard deviation. * indicates significant difference comparing with the control group ($p < 0.05$). C: control, received no inoculation; Y: received YZ29 inoculation; D: received DZ13 inoculation; Y + D: received YZ29 and DZ13 inoculation.

in phosphorus and potassium accumulation of Y-treated, D-treated and Y+D-treated plants compared with the control plants. At the maturation stage, nitrogen and phosphorus accumulation of Y-treated plants were significantly higher ($p < 0.05$) and increased by 50.21% and 20.38%, respectively, compared with the control. In summary, the nutrient accumulation of Y-treated plants was higher than that of D-treated plants. Therefore, YZ29 strain was more effective in promoting nutrient absorption in peanut than DZ13.

In the field trial, YZ29 and DZ13 also affected the nutrient accumulation of peanut (Fig. 6D–F). At the seedling stage, significant difference ($p < 0.05$) was observed only in phosphorus accumulation of Y-treated and D-treated plants compared with the control and increased by 27.94% and 30.28%, respectively, compared with the control plants. At the needling stage, nitrogen, phosphorus and potassium accumulation of D-treated plants were significantly higher ($p < 0.05$) than those of the control plants and were enhanced by 21.90%, 63.90% and 33.52%, respectively, compared with the control. At the pod stage, phosphorus and potassium accumulation of Y+D-treated plants were the highest and markedly ($p < 0.05$) increased by 39.36% and 37.79% compared with the control

plants. At the maturation stage, nitrogen, phosphorus and potassium accumulation of D-treated plants were the highest and significantly ($p < 0.05$) enhanced by 6.67%, 13.17% and 21.59%, respectively, compared with the control plants.

Growth characteristics

In the pot assay in 2012, percentage of full pods and total weight of 100 fresh pods were measured at the maturation stage. Percentage of full pods in D-treated and Y+D-treated plants were significantly higher ($p < 0.05$) than that in the control plants, and enhanced by 46.28% and 54.27%, respectively (Fig. 7A). The fresh weight of 100 fresh pods were significantly higher in the three inoculated treatments compared with that in the control, and increased by 91.71%, 24.87% and 29.81%, respectively (Fig. 7B).

In the pot assay in 2013, the plant dry matter was measured at the seedling and blossom stages of dual inoculation of YZ29 and DZ13 (Fig. 7C). At the seedling stage, the dry weight of the whole plants in the Y-treated and Y+D-treated plants were significantly higher ($p < 0.05$) ($1.80 \text{ g plant}^{-1}$ and $1.76 \text{ g plant}^{-1}$, respectively) than the control, and increased by 22.45% and

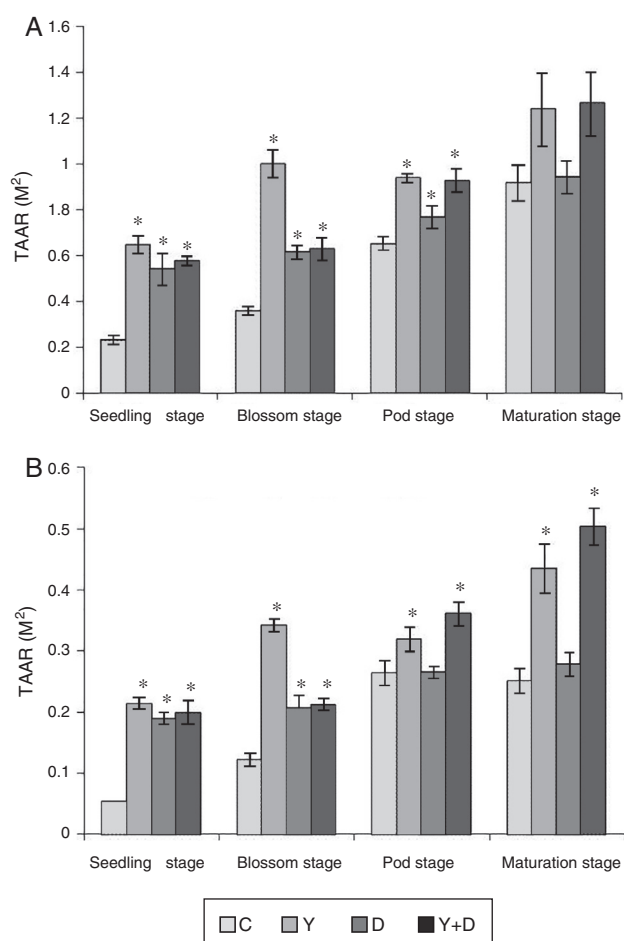


Fig. 5 – Root activities in different growth periods of peanuts in the pot assay in 2012. (A) Total absorption area of peanut roots and (B) active absorption area of peanut roots. TAAR, total absorption area; AAAR, active absorption area. Data were presented as mean \pm standard deviation. * indicates significant difference comparing with the control group ($p < 0.05$). C: control, received no inoculation; Y: received YZ29 inoculation; D: received DZ13 inoculation; Y + D: received YZ29 and DZ13 inoculation.

19.73%, respectively. The Y + D-treated plants at the blossom stage exhibited the highest dry weight ($5.23 \text{ g plant}^{-1}$) and was significantly ($p < 0.05$) higher than that in the control plants.

In the field trial, no significant differences were observed in the plant biomass, percentage of full pods and shelling percentage among the four treatments. The pod yield in the three inoculated treatments was significantly higher ($p < 0.05$) than that in the control, and the yield in the Y-treated plants increased by 37.05% compared with the control (Table 2).

Quality of peanut kernels

In the pot assay in 2013, the protein content of kernels in Y-treated, D-treated, and Y + D-treated plants increased by 13.25%, 9.18% and 5.21%, respectively, compared with the

control. The crude fat contents of kernels in Y-treated and Y + D-treated plants were significantly higher than ($p < 0.05$) that of the control (C) treatment and increased by 4.70% and 5.96%, respectively, compared with that of the control (Table 3).

Under field conditions, the effects of YZ29 and DZ13 on protein and crude fat contents of peanut kernels were not significant ($p > 0.05$) (Table 3). The protein contents in kernels in Y-treated, D-treated, and Y + D-treated plants increased by 3.97%, 0.18% and 2.06%, respectively, compared with the control plants. The crude fat contents in Y-treated, D-treated and Y + D-treated plants increased by 4.69%, 5.21%, and 7.20%, respectively, compared with the control treatment. Collectively, YZ29 and DZ13 was able to enhance the quality of peanut kernels under the potted and field conditions.

Structure of microbial community in soil

YZ29 and DZ13 affected the structure of microbial community in soil surrounding the roots of peanut plants. Under pot and field conditions, the species diversity of soil surrounding the peanut roots in the three inoculated treatments significantly increased compared with the control (Table 4). Margalef and Shannon–Wiener diversity indexes were higher, and the Simpson index was lower in the three inoculated treatments than those in the control (Table 5). In the pot assay in 2012, the soil samples surrounding the peanut roots at the pod stage were digested by *Msp* I digestion. Margalef and Shannon–Wiener diversity indexes in Y-inoculated and Y + D-inoculated treatments were significantly higher than those in the control ($p < 0.05$), and they were the highest in the Y-inoculated treatment. The Simpson index was significantly lower in the three inoculation treatments than in the control ($p < 0.05$), and it was the lowest in the Y-inoculated treatment (Table 5). The amount of beneficial bacteria, such as *Azoarcus* sp., *Rhizobium* sp., *Rhodobacter* sp. and *Frankia* sp., also increased in the Y-inoculated treatment compared with the control (Table 4). In the pot assay in 2013, when soil samples were digested by *Msp* I digestion, there were significant differences in the Margalef, Shannon–Wiener diversity, and Simpson indexes between the three inoculation treatments and the control ($p < 0.05$); when soil samples were digested by *Hha* I and *Alu* I, Simpson index was significantly lower in the three inoculation treatments than in the control ($p < 0.05$, Table 5). The amount of *Bacillus* sp., *Paenibacillus* sp., *Burkholderia* sp. and *Frankia* sp. in the Y + D-inoculated treatment increased (Table 4). Under field conditions, when soil samples were digested by *Msp* I and *Alu* I, Margalef index was significantly higher in the three inoculation treatments than in the control ($p < 0.05$); when soil samples were digested by *Hha* I, Simpson index was significantly lower in the three inoculation treatments than in the control ($p < 0.05$). There were significant differences in the three diversity indexes between the D-inoculated treatment and the control whichever the soil samples were digested by ($p < 0.05$, Table 5). Furthermore, the amount of *Bacillus* sp., *Pseudomonas* sp. and *Microbacterium* sp. in the D-inoculated treatment was distinctly increased compared with the control (Table 4).

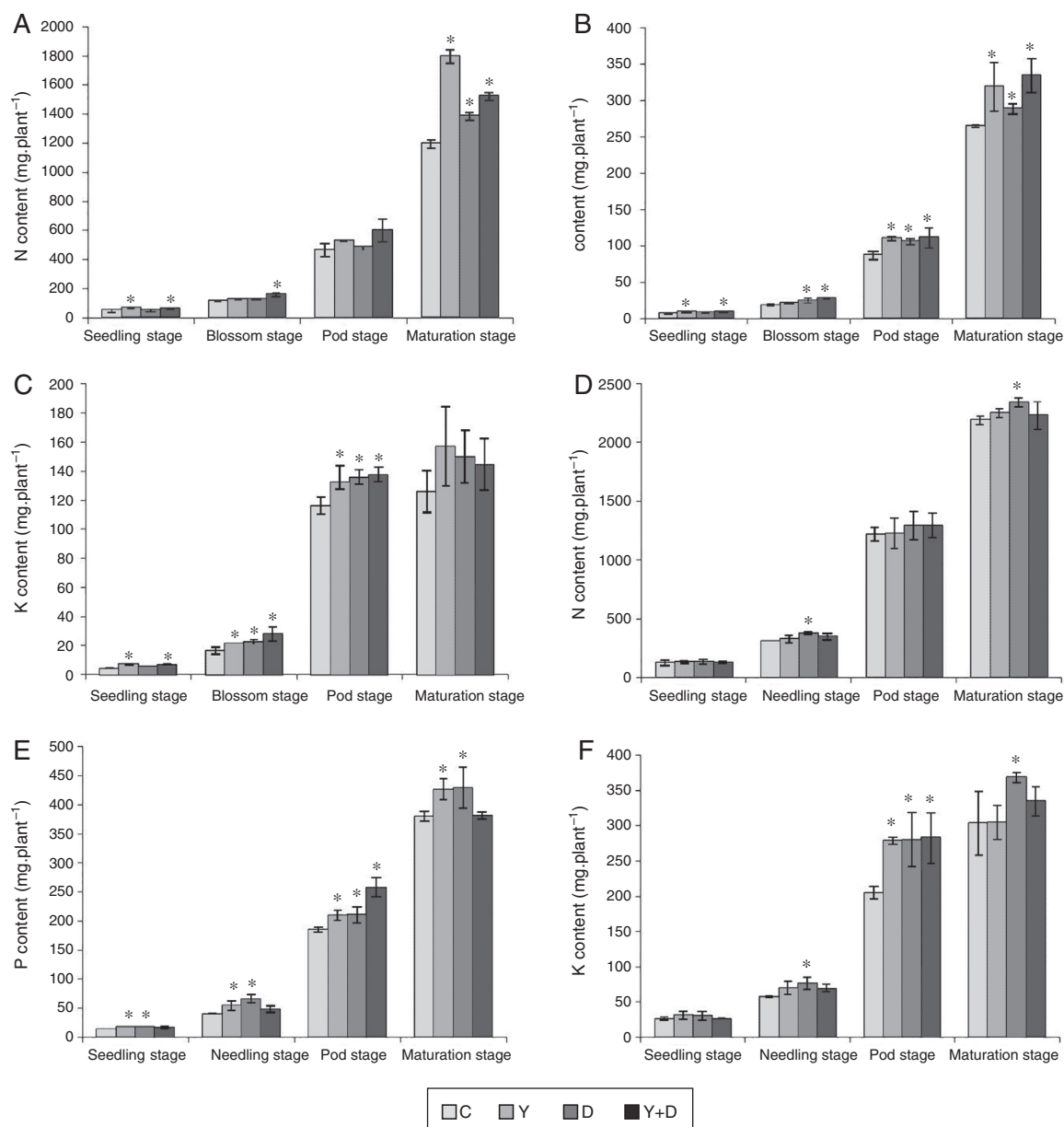


Fig. 6 – Total nitrogen, phosphorus and potassium accumulation of peanut plants of different treatments in each growth period. (A) Total nitrogen accumulation of peanut plants of different treatments in each growth period in the pot assay in 2013. (B) Total phosphorus accumulation of peanut plants of different treatments in each growth period in the pot assay in 2013. (C) Total potassium accumulation of peanut plants of different treatments in each growth period in the pot assay in 2013. (D) Total nitrogen accumulation of peanut plants of different treatments in each growth period in the field trial. (E) Total phosphorus accumulation of peanut plants of different treatments in each growth period in the field trial. (F) Total potassium accumulation of peanut plants of different treatments in each growth period in the field trial. Data were presented as mean \pm standard deviation. * indicates significant difference comparing with the control group ($p < 0.05$). C: control, received no inoculation; Y: received YZ29 inoculation; D: received DZ13 inoculation; Y + D: received YZ29 and DZ13 inoculation.

Discussion

Siderophores produced by microorganism have the potential ability to relieve iron-deficiency chlorosis of peanut effectively.^{4,6} In this study, iron nutrient uptake of peanut and plant growth were evaluated after the inoculation of two

siderophore-producing strains using potted experiments and a field trial.

In the pot experiment, a linear correlation was observed between active iron and chlorophyll contents in leaves in the growth period. Iron is important for the synthesis of chlorophyll. The formation of chlorophyll synthesis precursor 5-amino ketones pentanoic acid (ALA) requires iron, and

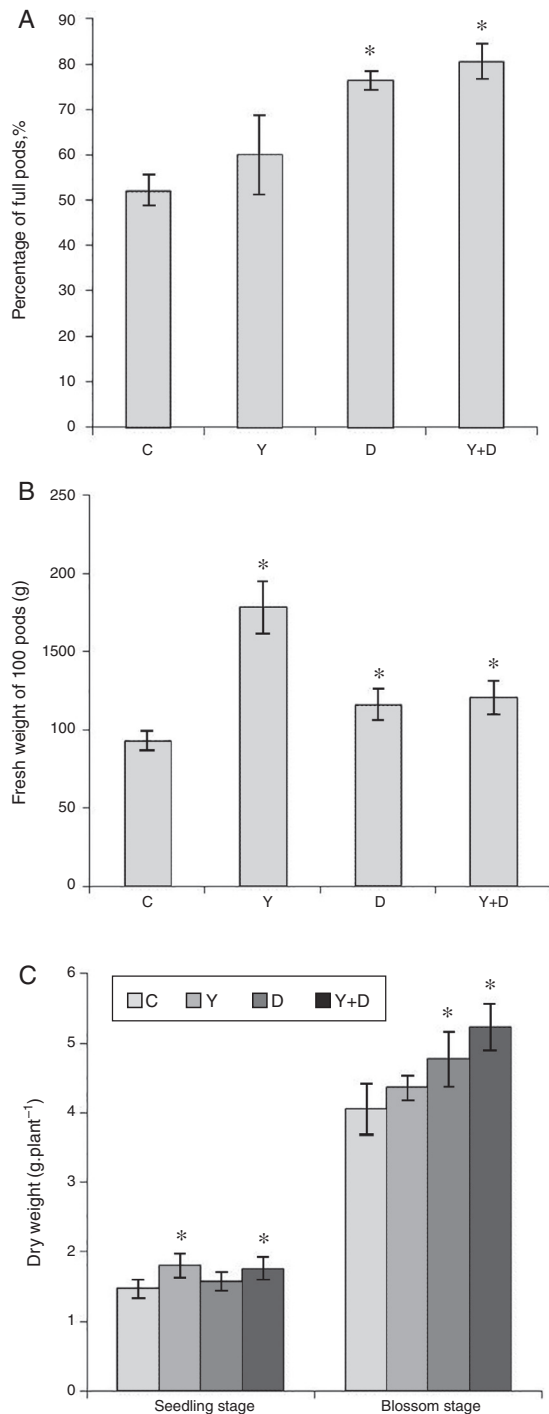


Fig. 7 – Biomass and yield factors in the pot assays. (A) Percentage of full pods in different treatment groups after harvest in the pot assay in 2012. (B) Fresh weight of 100 pods in different treatment groups after harvest in the pot assay in 2012. (C) Dry weight of peanut plants in different treatment groups in the seedling and blossom stages in the pot assay in 2013. Data were presented as mean \pm standard deviation. * indicates significant difference comparing with the control group ($p < 0.05$). C: control, received no inoculation; Y: received YZ29 inoculation; D: received DZ13 inoculation; Y + D: received YZ29 and DZ13 inoculation.

chlorophyll formed by ALA also requires iron in the synthesis process.²² However, a declined trend in the chlorophyll content of the four inoculated treatments and an increasing trend in the active iron of leaves were observed at the blossom stage. We speculated that given the lack of chlorophyll in plants at the blossom stage, more active chlorophyll synthetic reaction was required for the normal plant growth. In the second pot experiment, visual inspection showed that the degree of yellowing in the new leaves of peanut in the control treatment was more serious than in the inoculated treatments at the pod stage, and significant differences of chlorophyll and active iron contents in leaves were detected between the inoculated treatments and control treatment, indicating that the siderophores secreted by YZ29 and DZ13 ameliorated the symptoms. Similar results have been observed in mung bean inoculated by the ion of *P. fluorescens* strain GRP3A.²³ Therefore, after the inoculation of YZ29 and DZ13, the chlorophyll and active iron contents of peanut were distinctly affected under pot conditions. However, we found that in the field trial, there were no significant differences in active iron and chlorophyll contents in leaves, between the inoculated treatments and control treatment. We speculated that in the field conditions, many complex and uncontrollable environmental factors, such as rain, climate and soil microbial environment, might weaken the effect of YZ29 and DZ13, thus leading to the non-significant differences of the indicators in leaves between the inoculated treatments and control treatment. In our further study, we will conduct larger scale field trial to confirm the effect of YZ29 and DZ13. Furthermore, both TAAR and AAAR were significantly higher in the three inoculated treatments at the seedling and blossom stages, compared with the control. The intensity of plant root activity is closely related to the entire plant life activities, and the peanut root absorption area and root vitality are closely associated with the growth and development of the ground part in plant. Developed roots and strong root activity will contribute to the robust plant growth.²⁴ Thereby, these results suggested that YZ29 and DZ13 were able to enhance peanut root activity.

In the present study, the concentration of nitrogen, phosphorus and potassium increased in the peanut plants with bacterial inoculation at some certain growth stages, compared with the controls. Nitrogen, phosphorus and potassium are three essential plant nutrient elements and play critical roles in the metabolism and growth of plants. Nitrogen is an important component of chlorophyll, and chlorophyll content is closely related to nitrogen abundance.²⁵ Potassium is the activator of multiple enzymes in plants. It does not only promote photosynthesis, but also enhance nitrogen plant metabolism.²⁶ Iron is the necessary element of ferritin and molybdo-ferredoxin in nitrogen-fixing microorganisms,²⁷ thus, it is also one of the indispensable elements of symbiotic nitrogen fixation in leguminous plants. Collectively, the increased concentration of nitrogen, phosphorus and potassium may be due to increased chlorophyll concentration and enhanced root activity, thereby promoting peanut growth. Similar studies have also been reported earlier by Leong and Dey.^{28,29}

Peanut plant biomass and pod yield are the final responses that determine whether siderophores produced by YZ29 and DZ13 can promote iron nutrient absorption and peanut

Table 2 – Differences of plant biomass and yield factors after harvest in the field trial.

Treatments	Plant biomass (g plant ⁻¹)				Yield factors			
	Blossom stage	Needling stage	Pod stage	Maturation stage	Percentage of full pods (%)	Shelling percentage (%)	Pod yield (kg ha ⁻¹)	Yield increase percentage (%)
C	4.00 ± 0.62	12.13 ± 1.96	22.33 ± 2.43	31.81 ± 3.56	57.79 ± 2.03	65.41 ± 2.33	3547.50 ± 30.98	
Y	4.17 ± 0.35	12.20 ± 0.59	24.74 ± 2.58	32.97 ± 3.16	61.27 ± 3.26	68.91 ± 3.78	4614.45 ± 24.98 ^a	37.05
D	4.41 ± 0.44	12.18 ± 1.54	24.46 ± 3.01	33.48 ± 5.23	62.53 ± 3.25	67.34 ± 3.33	4036.9 ± 12.01 ^a	13.80
Y + D	4.16 ± 0.60	12.93 ± 2.38	23.69 ± 2.98	31.43 ± 1.73	61.11 ± 1.77	67.21 ± 1.78	4028.70 ± 27.43 ^a	13.57

Note: Data are presented as mean ± standard deviation. C, control, received no inoculation; Y, YZ29 inoculation; D, DZ13 inoculation; Y + D, YZ29 and DZ13 inoculation.

^a Significant difference compare with the control ($p < 0.05$).

Table 3 – Differences of protein and crude fat contents of peanut kernels after harvest in the pot assay in 2013 and field trial.

Treatments	Pot assay		Field trial	
	Protein content (%)	Crude fat content (%)	Protein content (%)	Crude fat content (%)
C	28.38 ± 1.17	50.69 ± 1.45	27.23 ± 0.82	49.71 ± 3.29
Y	32.14 ± 2.19	53.07 ± 0.83 ^a	28.31 ± 0.71	52.04 ± 0.78
D	31.25 ± 2.41	51.87 ± 0.90	27.28 ± 0.76	52.30 ± 1.13
Y + D	29.86 ± 0.40	53.71 ± 0.18 ^a	27.79 ± 0.89	53.29 ± 5.56

Note: Data are presented as mean ± standard deviation. C, control, received no inoculation; Y, YZ29 inoculation; D, DZ13 inoculation; Y + D, YZ29 and DZ13 inoculation.

^a Significant difference compare with the control ($p < 0.05$).

growth. Under potted conditions, the plant dry matter at the seedling and blossom stages significantly increased in the plants with bacterial dual-inoculation, compared with the controls. The definite enhancement of plant dry matter may result from the improved uptake of iron, nitrogen, phosphorus and potassium. Furthermore, in the field assay, pod yield in the Y-treated plants increased by 37.5% compared with the control. A previous similar study has reported that *P. fluorescens* PGPR2 increased pod yield by 28.3% compared with the control.²⁹ Moreover, in this study, a significant increase ($p < 0.05$) was observed in the crude fat content of kernels in Y-treated and Y + D-treated plants compared with the control under potted conditions. Similarly, *P. fluorescens* has been demonstrated to improve the crude fat content of peanut kernels.³⁰ Therefore, after the inoculation of YZ29 and DZ13, peanut plant biomass, pod yield and crude fat content of kernels were obviously increased, which may be due to the siderophores produced by YZ29 and DZ13.

Under potted conditions, the structure of microbial community in soil surrounding the roots of peanut plants was changed after bacterial inoculation. The amount of a set of beneficial bacteria, such as *Rhizobium* sp., *Bacillus* sp., *Streptomyces* sp., *Lactobacillus* sp., *Azoarcus* sp. and *Pseudomonas* sp. Previous studies have reported the effects of the aforementioned bacteria on plant. For instance, *Rhizobium* and *Azoarcus* provide nitrogen to leguminous plants by nitrogen fixation. *Bacillus* and *Pseudomonas* strains produce antibiotics, thereby consequently preventing and curing plant diseases and promoting plant growth.^{31–34} Furthermore, *Streptomyces* sp. promote the biodegradation of soil humic acids.³⁵ A set

of *Lactobacillus* strains can improve soil fertility³⁶ and prevent plant diseases.³⁷ In this study, several reasons may result in the improvement of microorganism richness and diversity in the soil surrounding roots of peanut plants. On the one hand, the root activity of peanut was enhanced, resulting in the improvement of soil enzyme activity and increase of microbial population in the soil.³⁸ On the other hand, root metabolic activity was improved with enhanced root activity, which affected the species and quantity of root exudates, thus, the species and quantity of microorganism in the soil varied.^{39,40} Similar studies have also been previously reported by other researchers.^{41,42} Taken together, it was demonstrated that the structure of microbial community in soil surrounding the roots of peanut plants was affected after the inoculation of YZ29 and DZ13.

Although environmental factors, such as rain, climate and previous crop, were complex under field conditions, the uptake of iron nutrient and other nutrients in peanut was still improved. Besides, plant biomass and pod yield was increased after the inoculation of YZ29 and DZ13. These results suggested the positive effect of YZ29 and DZ13 on iron nutrient uptake and plant growth of peanut, and the two strains may be used as candidates to be made as bacterial manure.

Reports about the effect of microbial siderophores on the growth of peanut in soil are available. As early as 1986, Jurkevitch et al. reported that chlorophyll content of peanut plants was significantly higher in the separated iron pigment-treated soil and bacterial suspension-treated soil than the FeEDDHA-treated and control plants in pots.⁴³ In 2004, Dey reported that siderophore-producing *P. fluorescens* PGPR1, PGPR2 and PGPR4

Table 4 – Differences of T-RFs on the T-RFLP map of soil samples at the pod stage.

Treatments		Number of effective T-RFs ^a	Added effective fragment size (bp) and species they may represent compared with the control
The pot assay in 2012	Msp I	C	10
		Y	18
		D	14
	Msp I	Y + D	17
		C	11
		Y	19
The pot assay in 2013	Msp I	D	15
		Y + D	24
		C	13
	Hha I	Y	15
		D	16
		Y + D	18
Alu I	C	12	
	Y	14	
	D	16	
	Y + D	14	
	C	19	
The field assay in 2013	Msp I	Y	27
		D	29
	Hha I	Y + D	26
		C	14
		Y	17
	Alu I	D	19
Y + D		18	
C		14	
Y		21	
D		20	
Alu I	Y + D	20	

Note: $A_p = n_i/N \times 100$, where n_i represents the peak area of one distinct T-RF and N is the sum of all peak areas in the T-RFLP map. Species with bold numbers cannot be speculated by T-RFLP Phylogenetic Assignment Tool. C, control, received no inoculation; Y, YZ29 inoculation; D, DZ13 inoculation; Y + D, YZ29 and DZ13 inoculation.

^a Effective T-RFs represent the percentage abundance (A_p) of each T-RF equal or greater than 1% between 50 and 600 bp.

Table 5 – Bacterial diversity of soil samples at the pod stage.

Treatments	Pot assay in 2012						Pot assay in 2013					
	Msp I			Msp I			Hha I			Alu I		
	Ma	Sh	Si	Ma	Sh	Si	Ma	Sh	Si	Ma	Sh	Si
C	1.979 ± 0.142	1.38 ± 0.11	0.151 ± 0.021	2.604 ± 0.217	1.94 ± 0.17	0.148 ± 0.015	3.999 ± 0.293	2.51 ± 0.27	0.076 ± 0.004	3.805 ± 0.423	2.56 ± 0.11	0.064 ± 0.003
Y	3.025 ± 0.264 ^a	2.12 ± 0.21 ^a	0.027 ± 0.001 ^a	5.608 ± 0.487 ^a	2.94 ± 0.16 ^a	0.034 ± 0.002 ^a	4.052 ± 0.218	2.64 ± 0.19	0.047 ± 0.002 ^a	4.013 ± 0.216	2.63 ± 0.21	0.048 ± 0.003 ^a
D	2.050 ± 0.182	2.01 ± 0.19 ^a	0.040 ± 0.005 ^a	3.618 ± 0.285 ^a	2.36 ± 0.18 ^a	0.062 ± 0.003 ^a	4.017 ± 0.176	2.61 ± 0.29	0.050 ± 0.002 ^a	4.488 ± 0.337 ^a	2.65 ± 0.21	0.052 ± 0.002 ^a
Y+D	2.814 ± 0.214 ^a	2.05 ± 0.16 ^a	0.053 ± 0.007 ^a	6.469 ± 0.320 ^a	3.14 ± 0.29 ^a	0.030 ± 0.002 ^a	4.873 ± 0.362 ^a	2.85 ± 0.32	0.046 ± 0.001 ^a	4.445 ± 0.273 ^a	2.72 ± 0.23	0.054 ± 0.004 ^a
Treatments	Field assay in 2013											
	Msp I			Hha I			Alu I					
	Ma	Sh	Si	Ma	Sh	Si	Ma	Sh	Si			
C	5.354 ± 0.431	2.90 ± 0.30	0.033 ± 0.001	3.890 ± 0.378	2.58 ± 0.21	0.058 ± 0.003	3.664 ± 0.125	2.53 ± 0.10	0.059 ± 0.003			
Y	7.092 ± 0.593 ^a	3.23 ± 0.38	0.029 ± 0.003	4.203 ± 0.271	2.76 ± 0.32	0.046 ± 0.003 ^a	4.729 ± 0.362 ^a	2.83 ± 0.24	0.046 ± 0.002 ^a			
D	7.745 ± 0.632 ^a	3.34 ± 0.27	0.027 ± 0.002 ^a	4.582 ± 0.294 ^a	2.80 ± 0.19	0.049 ± 0.002 ^a	4.853 ± 0.382 ^a	2.80 ± 0.18 ^a	0.054 ± 0.001			
Y+D	6.649 ± 0.721 ^a	3.19 ± 0.16	0.028 ± 0.001 ^a	4.409 ± 0.374	2.78 ± 0.31	0.048 ± 0.002 ^a	4.401 ± 0.378 ^a	2.71 ± 0.28	0.058 ± 0.003			

Note: Data are presented as mean ± standard deviation. Ma, Margalef index; Sh, Shannon–Wiener index; Si, Simpson index; C, control, received no inoculation; Y, YZ29 inoculation; D, DZ13 inoculation; Y + D, YZ29 and DZ13 inoculation.

^a Significant difference compare with the control ($p < 0.05$).

increased the nitrogen and phosphorus contents in soil, and increased pod yield in calcareous soil in pot and field trials.²⁹ But, the aforementioned studies did not focus on the change in iron content in peanut plants, which was an important indicator to investigate the effect of microbial siderophores on iron nutrition of plants. Moreover, previous studies only evaluated the growth of peanut in one growth period. By contrast, the present study analyzed the changes in iron content in peanut leaves and evaluated the growth of peanut in the whole growth period. However, this study has some limitations. The types of siderophores produced by these two strains is needed to be determined, and extracellular ferric reductase activity of the microbial strains is needed to be studied, which will be further investigated and reported later.

In conclusion, after the inoculation of two siderophore-producing strains YZ29 and DZ13, iron and chlorophyll contents of peanut leaves, peanut root activity, total nitrogen, phosphorus and potassium accumulation of plants, quality of peanut kernels and plant biomass were improved, compared with the controls. The two strains are promising to be made into bacterial manure. In addition, the present study is the first to explore the effect of siderophores produced by *P. illinoisensis* on iron absorption. The effect of siderophores produced by *Bacillus* and *Paenibacillus* in calcareous soils on iron nutrition uptake of peanut is also first to be reported. One of our ongoing studies aims to obtain purified siderophores produced by the two strains and then investigate their effects on plant, elucidate their structures, and apply the purified siderophores to growing media of peanut to evaluate the status of plants.

Conflicts of interest

The authors declare that they have no conflict of interest.

Acknowledgments

This work was supported by the National Natural Science Foundation of China (Grant No. 31100005) and the Science and Technology Major Projects of Shandong Province (2015ZDXX0502B02). We would like to thank the financial support by STANLEY GROUP and also thank the professor Fengzhen Liu in Plant genetics and breeding department of Shandong Agricultural University, who provided help for peanut cultivation.

REFERENCES

- Schmidt W. Iron solutions: acquisition strategies and signaling pathways in plants. *Trends Plant Sci.* 2003;8:188–193.
- Liu CY, Feng CC, Cheng XZ, Yang HB, Zhao YT, Wang JG. The reasons and prevention measures of peanut yellow leaf disease. *J Henan Agric Sci.* 2004;32:90.
- Payne SM. Detection, isolation, and characterization of siderophores. *Method Enzymol.* 1994;235:329–344.
- Jurkevitch E, Chen Y, Hadar Y. Involvement of bacterial siderophores in the remedy of lime-induced chlorosis in peanut. *Soil Sci Soc Am J.* 1988;52:1032–1037.
- Bar-Ness E, Chen Y, Hadar Y, Marschner H, Römheld V. Siderophores of *Pseudomonas putida* as an iron source for dicot and monocot plants. *Plant Soil.* 1991;130:231–241.
- Hördt W, Römheld V, Winkelmann G. Fusarinines and dimerum acid, mono- and dihydroxamate siderophores from *Penicillium chrysogenum*, improve iron utilization by strategy I and strategy II plants. *Biomol.* 2000;13:37–46.
- Yehuda Z, Shenker M, Hadar Y, Chen Y. Remedy of chlorosis induced by iron deficiency in plants with the fungal siderophore rhizoferrin. *J Plant Nutr.* 2000;23:1991–2006.
- Schwyn B, Neilands J. Universal chemical assay for the detection and determination of siderophores. *Anal Biochem.* 1987;160:47–56.
- Dong XZ, Cai MY. *Determinative Manual of Common Systematic Bacteriology.* Beijing: Science Press; 2001.
- Tamura K, Dudley J, Nei M, Kumar S. MEGA4: Molecular Evolutionary Genetics Analysis (MEGA) software version 4.0. *Mol Biol Evol.* 2007;24:1596–1599.
- Wang YZ, Wen LJ, Zhang XJ. Screening of soil bacteria antagonistic cotton verticillium wilt. *Bull Agric Sci Technol.* 2011;6:8–71.
- Mackinney G. Absorption of light by chlorophyll solutions. *J Biol Chem.* 1941;140:315–322.
- Sun L. *Plant Nutrition Experiment.* Peking University Press; 2012.
- Kjeldahl J. A new method for the estimation of nitrogen in organic compounds. *Z Anal Chem.* 1883;22:366.
- Soxhlet Fv. Die gewichtsanalytische bestimmung des milchfettes. *Polytech J.* 1879;232:461–465.
- Schütte UM1, Abdo Z, Bent SJ, et al. Advances in the use of terminal restriction fragment length polymorphism (T-RFLP) analysis of 16S rRNA genes to characterize microbial communities. *Appl Microbiol Biotechnol.* 2008;80:1–14.
- Luo C, Xie S, Sun W, Li X, Cupples AM. Identification of a novel toluene-degrading bacterium from the candidate phylum TM7, as determined by DNA stable isotope probing. *Appl Environ Microbiol.* 2009;75:4644–4647.
- Dunbar J, Ticknor LO, Kuske CR. Phylogenetic specificity and reproducibility and new method for analysis of terminal restriction fragment profiles of 16S rRNA genes from bacterial communities. *Appl Environ Microbiol.* 2001;67:190–197.
- Lukow T, Dunfield PF, Liesack W. Use of the TRFLP technique to assess spatial and temporal changes in the bacterial community structure within an agricultural soil planted with transgenic and nontransgenic potato plants. *FEMS Microbiol Ecol.* 2000;32:241–247.
- Fahimipoor E, Zare MA, Jafari M, Goldansaz M, Mohhebi Z. Investigation of plant diversity in middle rangelands of Taleghan by using BIO-DAP. *J Rangel Sci.* 2010;1:47–51.
- Kent AD, Smith DJ, Benson BJ, Triplett EW. Web-based phylogenetic assignment tool for analysis of terminal restriction fragment length polymorphism profiles of microbial communities. *Appl Environ Microbiol.* 2003;69:6768–6776.
- Bai YJ, Mu SH. Uptake and transport of iron in plants and relations between iron and chlorophyll. *J Agric Univ Hebei.* 1994;17:121–125.
- Sharma AJBN. Combat of iron-deprivation through a plant growth promoting fluorescent *Pseudomonas* strain GRP3A in mung bean (*Vigna radiata* L. Wilzeck). *Microbiol Res.* 2003;158:77–81.
- Atkinson D. The distribution and effectiveness of the roots of tree crops. *Hortic Rev.* 2011;42:4–490.
- Zhao D, Reddy KR, Kakani VG, Read JJ, Koti S. Selection of optimum reflectance ratios for estimating leaf nitrogen and chlorophyll concentrations of field-grown cotton. *Agron J.* 2005;97:89–98.

26. Zhao D, Oosterhuis D, Bednarz C. Influence of potassium deficiency on photosynthesis, chlorophyll content, and chloroplast ultrastructure of cotton plants. *Photosynthetica*. 2001;39:103–109.
27. Cattelan AJ, Hartel PG, Fuhrmann JJ. Screening for plant growth-promoting rhizobacteria to promote early soybean growth. *Soil Sci Soc Am J*. 1999;63:1670–1680.
28. Leong J. Siderophores: their biochemistry and possible role in the biocontrol of plant pathogens. *Annu Rev Phytopathol*. 1986;24:187–209.
29. Dey R, Pal KK, Bhatt DM, Chauhan SM. Growth promotion and yield enhancement of peanut (*Arachis hypogaea* L.) by application of plant growth-promoting rhizobacteria. *Microbiol Res*. 2004;159:371–394.
30. Sruthi VS, Kumar KVK, Sujatha K, et al. Efficacy of *Pseudomonas fluorescens* strains in enhancing growth and yield of peanut. In: Reddy MS, Ilao RI, Faylon PS, Dar WD, Sayyed R, Sudini H, Kumar KVK, Armanda A, eds. *Proceedings of 3rd Asian Conference on Plant Growth-Promoting Rhizobacteria (PGPR) and other Microbials: Manila, Philippines*. 2013: 359–365.
31. Kim P, Bai H, Bai D, et al. Purification and characterization of a lipopeptide produced by *Bacillus thuringiensis* CMB26. *J Appl Microbiol*. 2004;97:942–949.
32. Cherif A, Chehimi S, Limem F, et al. Detection and characterization of the novel bacteriocin entomocin 9, and safety evaluation of its producer, *Bacillus thuringiensis* ssp. entomocidus HD9. *J Appl Microbiol*. 2003;95:990–1000.
33. Maurhofer M, Baehler E, Notz R, Martinez V, Keel C. Cross talk between 2,4-diacetylphloroglucinol-producing biocontrol pseudomonads on wheat roots. *Appl Environ Microbiol*. 2004;70:1990–1998.
34. Kumar RS, Ayyadurai N, Pandiaraja P, Reddy AV, Venkateswarlu Y, Prakash Om Sakthivel N. Characterization of antifungal metabolite produced by a new strain *Pseudomonas aeruginosa* PUPa3 that exhibits broad spectrum antifungal activity and biofertilizing traits. *J Appl Microbiol*. 2005;98:145–154.
35. Kontchou CY, Blondeau R. Biodegradation of soil humic acids by *Streptomyces viridosporus*. *Can J Microbiol*. 1992;38:203–208.
36. Zhang L, Dai JY. The characters of effective micro-organisms (EM) and their utilization on planting industry. *Chin J Eco-Agric*. 2000;8:28–31.
37. Xu X, Shi Y, Gao SF, Wang ZY. Screening of antagonistic lactic acid bacteria and its control effect on collectotrchum orbiculare. *J Henan Agric*. 2012;41:87–91.
38. Du SN, Liang YL, Xu FL, Zhang CE, Chen ZJ. Effect of fertilization on soil microorganisms and enzyme activity under greenhouse condition. *Chin J Eco-Agric*. 2007;15:68–71.
39. Zhu LX, Zhang JE, Liu WG. Review of studies on interactions between root exudates and rhizospheric microorganisms. *Ecol Environ*. 2003;12:102–105.
40. Li Y, Huang XF, Ding WL. Root exudates and their effects on plant rhizosphere soil micro-ecology environment. *Acta Agric Boreali-Sin*. 2008;23:182–186.
41. Jia XW, Yan W, Bai SY, Shao DH, Wang TN. Study on the best isolated condition filtration of rhizosphere soil microorganism. *Acta Agric Boreali-Sin*. 2007;22:147–151.
42. Hu YS, Liu YF, Wu K, Dou HJ, Jia XC. Research on microflora change of continuous cropping soil of cucumber. *Chin J Soil Sci*. 2006;37:126–129.
43. Jurkevitch E, Hadar Y, Chen Y. The remedy of lime-induced chlorosis in peanuts by *Pseudomonas* sp siderophores. *J Plant Nutr*. 1986;9:535–545.