

Design and optimization of novel *in situ* gel of mercaptopurine for sustained drug delivery

Nagendra R., Roopa S. Pai*, Gurinder Singh

Department of Pharmaceutics, Al-Ameen College of Pharmacy, Karnataka, India

Mercaptopurine is a purine antagonist, belonging to the class of antimetabolites. Its oral absorption is erratic and variable throughout GIT, with bioavailability of 5-37% and belongs to Biopharmaceutical Classification System (BCS) class IV. The focus of the present study was to improve solubility of mercaptopurine and to release the drug uniformly throughout the GIT by formulating into a novel *in situ* gel tablet. By *in vitro* swelling studies, xanthan gum was selected as the best gelling polymer and the tablets were prepared by direct compression. Sodium chloride was used as a release modifier to improve the release of drug from the tablet. A 3² full factorial design was applied to optimize the percentage of xanthan gum and sodium chloride to get desired swelling index and release profile. Tablets were evaluated for weight variation, hardness, friability, disintegration time, drug content, *in vitro* swelling studies and *in vitro* dissolution studies. The best optimized formulation showed good swelling index and extended the release up to 12 h, where as conventional tablet released the drug within 45 min. The results indicate that mercaptopurine loaded *in situ* gel tablet could be effective in sustaining drug release for a prolonged period of time throughout the GIT, which can possibly improve the oral bioavailability.

Uniterms: Mercaptopurine/solubility. Mercaptopurine/drug delivery. Xanthan gum/use. Tablets/*in situ* gel.

Mercaptopurine é um antagonista da purina, pertencente à a classe dos antimetabólitos. A sua absorção oral é errática e variável através do TGI, com biodisponibilidade de 5-37 % e pertence à classe IV, de acordo com o Sistema de Classificação Biofarmacêutica. O foco do presente estudo foi melhorar a solubilidade da mercaptopurina e liberar o fármaco uniformemente através do TGI, por meio da nova formulação de comprimidos que se tornam gel *in situ*. Por meio de estudos de inchamento, a goma xantana foi selecionada como o o melhor polímero gelificante e os comprimidos foram preparados por compressão direta. O cloreto de sódio também foi usado como agente modificador de liberação para aprimorar a liberação do fármaco do comprimido. Aplicou-se planejamento fatorial 3² para otimizar a porcentagem de goma xantana e de cloreto de sódio para se alcançar o índice de inchamento e o perfil de liberação desejáveis. Os comprimidos foram avaliados quanto à variação de peso, dureza, friabilidade, tempo de desintegração, conteúdo de fármaco, estudos *in vitro* de inchamento e de dissolução. A formulação mais bem otimizada mostrou bom índice de inchamento e liberação prolongada acima de 12 h, em comparação com um comprimido convencional, que libera o fármaco em 45 minutos. Os resultados indicam que a 6-mercaptopurina carregada no comprimido de gelificação *in situ* poderia ser eficaz para a liberação controlada por período de tempo prolongado através do TGI, o que pode, possivelmente, aprimorar a biodisponibilidade oral.

Unitermos: Mercaptopurina/solubilidade. Mercaptopurina/liberação do fármaco. Goma xantana/uso. Comprimidos/gelificados *in situ*.

*Correspondence: Roopa S. Pai. Department of Pharmaceutics, Al-Ameen College of Pharmacy, Hosur Road, Near Lalbagh Main gate, Bangalore 560 027, India. E-mail: roopaspai@yahoo.com

INTRODUCTION

Mercaptopurine (6-MP) is a highly insoluble purine antagonist and belongs to the class of antimetabolites and is well known for its antitumor activity. It belongs to BCS class IV (poor solubility and poor permeability). The drug is used to treat leukemia, paediatric non-Hodgkin's lymphoma, Polycythemia Vera and Inflammatory Bowel Disease (such as Crohn's disease and ulcerative colitis). The oral absorption of 6-MP is erratic with only 10–50% of the administered dose reaches the systemic circulation. The limiting factors in the use of 6-MP are its very short half-life in plasma (0.5-1.5 h) and variable bioavailability (about 5-37%) (Zacchigna *et al.*, 2007).

By formulating into sustained release (SR) dosage form the above potential problems associated with drug can be overcome (Singh *et al.*, 2012). The most commonly used method for fabricating drugs in a SR formulation is by incorporating them into a matrix containing a hydrophilic rate-controlling polymer. Matrix systems are widely used in oral controlled drug delivery because of their simplicity in manufacturing processes, level of reproducibility, stability of the raw materials and dosage form (Gennaro, 2000).

In situ gel forming tablets are a revolution in oral drug delivery. Gel-forming tablets provide a popular and convenient SR dosage form for delivering drugs over an extended time for 8-24 h (Laity *et al.*, 2010). The drug is dispersed within a polymeric matrix, which controls the release rate. On contact with water or body fluids the outer surface of these tablets swell by polymer hydration and chain relaxation, forming a hydrogel coat (Parka *et al.*, 2010; Baumgartner *et al.*, 2005). When a poorly water soluble drug is dispersed throughout such a polymeric matrix, the swelling mechanism of the polymer results in wetting of the drug, due to sufficient contact between the drug and medium and thus enhancing the solubility of the drug (Ishikawa *et al.*, 2000).

Many synthetic, semi synthetic and natural hydrophilic polymers are used in the formulation of *in situ* gel tablets. The most commonly used are natural hydrophilic polymers because they are compatible and economical to formulate (Sourabh *et al.*, 2008).

Xanthan gum is a natural and biocompatible anionic polyelectrolyte with a semi-rigid chain structure. It is used to produce directly compressed matrices that display a high degree of swelling due to water uptake. Xanthan gum produces strong elastic gel by direct interaction between the polymeric chains which controls the drug release. Compared to hydroxy propyl methyl cellulose, xanthan gum has the potential advantage of drug release with zero order release kinetics (Mikac *et al.*, 2010).

The primary aim of the present study was to investigate whether it is possible to manufacture *in situ* gelling tablets of mercaptopurine for enhancing its solubility and bioavailability. Further the study was focused to acquire a comprehensive understanding about the influence of formulation parameters that powerfully affect the characteristics of the *in situ* gelling tablets. The effect of formulation parameters on swelling index and cumulative percentage release (CPR) was studied using 3² randomized full factorial design to obtain an optimal formulation.

MATERIAL AND METHODS

Material

Mercaptopurine monohydrate was received ex-gratis by M/S Dabur Pharmaceuticals Ltd, Ghaziabad, India. Xanthan gum, sodium alginate and hydroxypropyl cellulose (HPC) were purchased from M/S SD fine-chemicals limited (Mumbai, India). Hydroxy propyl methylcellulose (HPMC E15-LV) was provided ex-gratis by Himedia, Mumbai. PEG-6000 was received ex-gratis by M/S Titan Biotech. Sodium chloride was purchased from M/S Reachem Laboratory Chemicals. All other chemicals used were of analytical grade.

Formulation of *in situ* gel tablet of mercaptopurine

To select the most suitable polymer preliminary screening studies were carried out by preparing placebo tablets. The placebo tablets were prepared with xanthan gum (Mikac *et al.*, 2010), sodium alginate (Miyazaki *et al.*, 1995), HPMC (Vazquez *et al.*, 1996), HPC and Poly Ethylene Glycol-6000. The formulation of preliminary trial batches P-1 to P-10 are shown in Table I. The tablets were evaluated for hardness, disintegration time, swelling index.

Evaluation of placebo tablets

The placebo tablets were evaluated for hardness, disintegration time and *in-vitro* swelling studies.

Hardness

Tablets require a certain amount of strength or hardness to withstand mechanical shocks due to handling in manufacturing, packing and shipping. For each formulation, the hardness of 6 tablets was determined using the Monsanto hardness tester. The average hardness was calculated and recorded as kg/cm².

TABLE I - Placebo tablets prepared for screening of polymers

Excipients (%)	P1	P2	P3	P4	P5	P6	P7	P8	P9	P10
	Xanthan gum		Sodium alginate		HPMC		HPC		PEG 6000	
Polymer	50	75	50	80	30	80	20	40	45	80
Talc	5	5	5	5	5	5	5	5	5	5
Mg. Stearate	1	1	1	1	1	1	1	1	1	1
MCC	Quantity sufficient to make 150 mg tablet									

*The minimum and maximum percentage of each polymer selected in the above formulations was based on the reported literature.

Disintegration time

Disintegration time of the formulations was determined using Electrolab disintegration test apparatus. Six tablets were placed individually in each tube of disintegration test apparatus and discs were placed on it. Apparatus was operated using pH 1.2 buffer as medium, maintained at 37 ± 2 °C. The time required for complete disintegration of the tablets was recorded.

In vitro swelling studies

In vitro swelling studies were performed using USP apparatus of basket type at 37 ± 0.5 °C and rotational speed of 50 rpm. The tablet from each batch was kept in basket placed in dissolution flask and initial dry weight of basket (M_0) was recorded. The basket was placed in 900 mL of pH 1.2 buffer, for first 2 h. After specific time intervals 30 min, 60 min and 120 min the basket was taken out and weight of basket (M_t) was recorded after blotting with tissue paper. Again basket was placed in dissolution flask containing 900 mL of pH 7.4 phosphate buffer and stirring was carried out at 50 rpm. The basket was withdrawn at specific time intervals of 1 h and weighed for next 10 h (Babu *et al.*, 2002).

From equation [1] the percentage weight gain by the tablet was calculated using the formula (Deshmukh *et al.*, 2009):

$$SI = \frac{(M_t - M_0)}{M_0} \times 100 \quad (1)$$

where, SI = Swelling index, M_t = Weight of tablet at time 't' and M_0 = Weight of tablet at time '0'.

Formulation of *in-situ* gel tablets of mercaptopurine with xanthan gum

Mercaptopurine tablets were prepared by mixing the drug with xanthan gum, where talc, and magnesium stearate were used as glidant and lubricant, respectively.

The formulations F-1 to F-3 were prepared to select the most suitable diluent (Table II). Spray dried lactose and MCC either alone or in combination were used as diluents. The powder blends was passed through sieve no 40 and then the tablets were compressed by direct compression method using tablet compression machine (CIP Punching Machineries Pvt. Ltd, Mumbai, India) with 8 mm round punch. The tablets were evaluated.

TABLE II - Batches prepared for selection of suitable diluent

Ingredients (mg/tab)	F1	F2	F3
Mercaptopurine	50	50	50
Xanthan gum	75	75	75
Talc	7.5	7.5	7.5
Magnesium stearate	1.5	1.5	1.5
Spray dried lactose	-	8	16
MCC	16	8	-

Evaluation of tablets

The directly compressed tablets from formulation F-1 to F-3 were evaluated for parameters viz., weight variation, hardness, friability, disintegration time, drug content, *in-vitro* swelling studies and *in-vitro* drug release studies.

Weight variation test

The test was performed according to Indian Pharmacopeial norms. Twenty tablets were weighed individually and average weight was calculated. The individual weights were then compared with average weight. The weight variation was calculated as follows:

$$PD = \frac{W_{avg} - W_{ind}}{W_{avg}} \times 100$$

where, PD = Percentage Deviation, W_{avg} = Average Weight of Tablet, W_{ind} = Individual Weight of Tablet.

Hardness

The experimental method described above was used to determine the hardness of formulations F-1 to F-3.

Friability

The friability of 10 tablets was determined according to US Pharmacopeia using Electrolab (EF2) Friabilator. The friabilator was operated at 25 rpm for 4 minutes or run up to 100 revolutions to know the mechanical strength of the tablet while handling, packing and shipping.

Disintegration time

The experimental method described above was used to determine the disintegration time for formulations F-1 to F-3.

Drug content

10 tablets were crushed and powdered blend equivalent to 50 mg of mercaptopurine was weighed and dissolved in in 0.1 N NaOH. From this 10 mL was pipetted out into a 100 mL volumetric flask and volume was made up to 100 mL with 0.1N NaOH. Absorbance was measured at 311 nm using UV spectrophotometer. Drug content was determined from calibration curve. The experiment was carried out in triplicate.

In vitro swelling studies

The experimental method described above was used to determine *in-vitro* swelling studies for formulations F-1 to F-3.

Optimization of percentage of polymer and release modifier by 3² factorial design

To optimize the percentage of polymer and release modifier 3² full factorial design was applied. In this design 2 factors were evaluated, each at 3 levels, and experimental trials were performed at all 9 possible combinations. The percentage of xanthan gum (X_1) and release modifier

(X_2) were selected as independent variables. Swelling index and CPR were the dependent variables. Checkpoint batches were also prepared to prove the validity of the evolved mathematical model (Devi *et al.*, 2009; Singh *et al.*, 2012). Further, mercaptopurine tablets were prepared and the formulations were coded as F-4 to F-12. These formulations were prepared by varying percentage of xanthan gum (50%, 40% and 30%) along with sodium chloride in 5%, 7.5% and 10%, respectively as release modifier. (Table III). The level and coded variables are shown in Table IV. These tablets were obtained by direct compression method as discussed in previous section.

Step-wise backward linear regression analysis was used to develop polynomial equations for the dependent variables by using PCP Disso 2000 V3 software. The validity of the derived polynomial equations for the dependent variables (swelling index and CPR) was verified by designing and evaluating two check point formulations (C1 and C2) Table IV.

A statistical model incorporating interactive and polynomial terms was utilized to evaluate the (Equation 2).

$$Y = b_0 + b_1X_1 + b_2X_2 + b_{12}X_1X_2 + b_{11}X_1^2 + b_{22}X_2^2 \quad (2)$$

where Y is dependent variable; X_1 , X_2 are the levels (concentration) of the 1, 2 factor; b_1 , b_2 , b_{12} , b_{11} , b_{22} are the polynomial coefficients; b_0 is the intercept (which represents the response when the level of all factors is low).

The main effects (X_1 and X_2) represent average result of changing one factor at a time from its low to high value. The interaction term (X_1X_2) shows how the response changes when two factors are simultaneously changed. The polynomial terms (X_1^2 and X_2^2) are included to investigate non-linearity.

Evaluation of tablets

The directly compressed tablets from formulation F-4 to F-12 were evaluated for post-compression parameter like

TABLE III - Batches prepared for optimization of percentage of polymer and release modifier

Ingredients* (mg/tab)	F4	F5	F6	F7	F8	F9	F10	F11	F12
Mercaptopurine	33.3	33.3	33.3	33.3	33.3	33.3	33.3	33.3	33.3
Xanthan gum	50	50	50	40	40	40	30	30	30
Sodium chloride	5	7.5	10	5	7.5	10	5	7.5	10
Talc	5	5	5	5	5	5	5	5	5
Magnesium stearate	1	1	1	1	1	1	1	1	1
MCC	5.6	3.16	0.66	15.6	13.1	10.6	25.6	23.1	20.6

* Per 150 mg of tablet

TABLE IV - Factorial design batches of mercaptopurine tablets

Variables	F4	F5	F6	F7	F8	F9	F10	F11	F12	C1	C2
X1	-1	-1	-1	0	0	0	+1	+1	+1	-0.5	+0.5
X2	-1	0	+1	-1	0	+1	-1	0	+1	-0.5	+0.5

weight variation, hardness, friability, disintegration time, drug content, *in-vitro* swelling studies, *in-vitro* drug release studies. Kinetic modeling for drug release was applied. The experimental methods described above were carried out. Based on the above evaluation, the best formulation F-11 was selected and further evaluated for compatibility studies such as FTIR and DSC analysis. In-Vitro release behavior of this formulation was compared with marketed formulation. Further the effect of tablet shape and compression force on *in-vitro* release and swelling index of formulation F-11 was evaluated. The formulation was subjected to stability studies as per ICH guidelines.

Weight variation test

The weight variation test was carried out as per Indian Pharmacopoeial norms.

Friability

Tablets were tested for friability using Electrolab apparatus (EF2) (Patel *et al.*, 2005) following procedure described in earlier section.

Hardness

The experimental method described above was used to determine the hardness of formulations F-4 to F-12.

Drug content

For drug content determination, 6 tablets were randomly selected and crushed. Powdered blend equivalent to 50 mg of mercaptopurine was weighed, extracted with 0.1 N NaOH and analyzed by measuring the absorbance at 311 nm after suitable dilution, using Shimadzu UV-1601 UV/Vis double beam spectrophotometer as procedure described above. The experiment was carried out in triplicate.

In vitro swelling studies

The experimental method described above was used to determine *in-vitro* swelling index for formulations F-4 to F-12.

In vitro release studies

In vitro release studies were carried out in Electrolab TDT-06PL Dissolution tester USP apparatus Type I

(rotating basket) at a speed of 50 rpm in 900 mL of dissolution medium. Initially for 2 h, the study was carried out in simulated gastric fluid pH 1.2 and then medium was filtered through Whatmann filter paper. Furthermore, the tablet retained on filter paper was transferred to dissolution flask and the study was continued up to 10 h in pH 7.4 phosphate buffer. The temperature was retained at 37.0 ± 0.5 °C. 5 mL of samples were withdrawn at predetermined intervals and were analyzed by UV spectrophotometer at 311 nm (Model UV-1700, UV-Visible spectrophotometer, Shimadzu, Kyoto, Japan). Based on *in vitro* release studies formulation F-11 was selected as best formulation to give a SR effect for 12 h.

Comparison of *in-vitro* release studies of F-11 with marketed formulation

In vitro dissolution studies were performed for marketed (MKT) formulation of mercaptopurine (conventional tablet) using Electro lab-USP Dissolution test apparatus of paddle type with RPM of 50. Simulated gastric fluid pH 1.2 was the dissolution medium. Temperature of 37 ± 0.1 °C was maintained. 5 mL of sample was withdrawn at 5, 10, 15, 20, 30 and 45 min and was replaced with 5ml of pH 1.2 buffer after each withdrawal. 5 mL withdrawn sample was filtered. 1 mL of filtrate was diluted to 10 mL using 0.1 N NaOH. The dissolution data of formulation F-11 obtained was compared with the data of MKT formulation. Absorbance was measured at 311 nm using UV spectrophotometer.

Kinetic modeling of drug release

The dissolution profile of all the batches was fitted to first-order, zero-order, Higuchi matrix, Hixon-Crowell, Korsmeyer and Peppas to ascertain the kinetic modeling of drug release by using PCP Disso Version 2.08 software, and the model with the highest correlation coefficient was considered to be the best model.

Differential scanning calorimetry

Differential scanning calorimetry (DSC) studies were conducted using DSC Q2000. Sample was weighed (8.00-

10.00±0.5 mg) and placed in sealed aluminum pans. The coolant was liquid nitrogen. The samples were scanned at 100 °C/min from 200 to 350 °C. DSC thermo grams of pure drug, physical mixture and final formulation were taken.

Powder X-ray diffraction

Powder X-ray diffraction (PXRD) of pure drug, physical mixture and final formulation were recorded using a Philips PW 1729 X-ray diffractometer with monocrotized Cu Ka radiation, at a speed of 20 min⁻¹ from 10⁰-60⁰ 2θ under the voltage and current of 40 Kv and 30 Kv.

Effect of tablet shape and compression force on *in-vitro* release and swelling for formulation F-11

The optimized formulation was prepared to study the effect of tablet shape and compression force on *in-vitro* release and swelling index. The powder blend was compressed on Rimek MINI PRESS-II SF (Karnavati) using oval punch size of 9.4 x 5.6 mm under different compression forces at 2000 kg (2 kg/cm²), 3000 kg (3 kg/cm²), 4000 kg (4 kg/cm²) and 5000 kg (5 kg/cm²).

In vitro swelling studies

The experimental method described above was used for formulations F-11.

In vitro release studies

The experimental method described above was used for formulations F-11.

Stability studies

Stability testing is an integral part of formulation development. Stability study of the optimized matrix tablets was carried out as per ICH guidelines at 40±2 °C/75%±5% RH. Physical attributes of the tablets, appearance, percentage drug content and dissolution profiles were tested over a period of 3 months.

RESULTS AND DISCUSSION

Screening of suitable gelling polymer for preparation of *in situ* gel tablet

The placebo tablets containing xanthan gum exhibited best hardness, swelling index and disintegration time as shown in Tablet V, whereas tablets containing PEG-6000 showed least hardness, disintegration time and negligible swelling. Thus xanthan gum was selected as the best *in-situ* gelling polymer for the preparation of 6-mercaptopurine tablets.

Evaluation of mercaptopurine tablets

The physicochemical properties of the tablets are summarized in Table VI. The formulation F-1 to F-12 indicated good physical strength as they exhibited excellent hardness ranging from 4.23-5.54 kg/cm² and also low friability values of 0.099-0.245% (Limit - <0.8%), weight variation was found to be <7.5% and drug content was found to be in range of 99.193-100.60%, which is within Pharmacopoeial limit (85-115%).

In vitro swelling studies

Swelling studies were carried out for all formulations F-1 to F-12. The swelling index indicates that the quantity of water which is absorbed by dissolution medium. The changes in weight, characteristic of water uptake and swelling, depend on amount of xanthan gum present in each formulation. The formulations F-1 to F-3 containing 50% of xanthan gum showed excellent swelling whereas formulations F-4 to F-12 also contains sodium chloride as release modifier showed reduced swelling. As the percentage of xanthan gum decreases and sodium chloride increases, swelling index decreases as shown in Figure 1. The photographs of *in situ* gel tablets are shown in Figure 2.

In vitro release studies

In vitro drug release was determined for the formulated tablets and it was compared with marketed

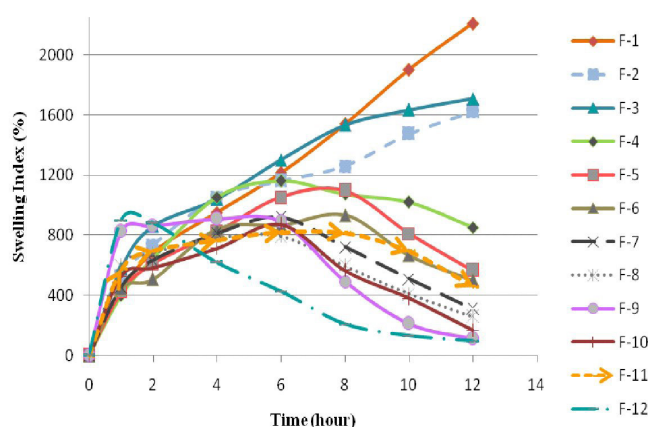
TABLE V - Hardness, disintegration and swelling index for formulation P-1 to P-10

Evaluation parameters	P1	P2	P3	P4	P5	P6	P7	P8	P9	P10
Hardness (kg/cm ²)	4.5	5	2.5	1	2	1.5	2.5	3.5	1	2.5
Disintegration Time (min)	>120	>120	>120	110	70	90	102	>120	9	10
Swelling Index (%)	906	1679	97	121	56	68	38	41	-	-

TABLE VI - Weight variation, hardness, friability and drug content formulation F-1 to F-12

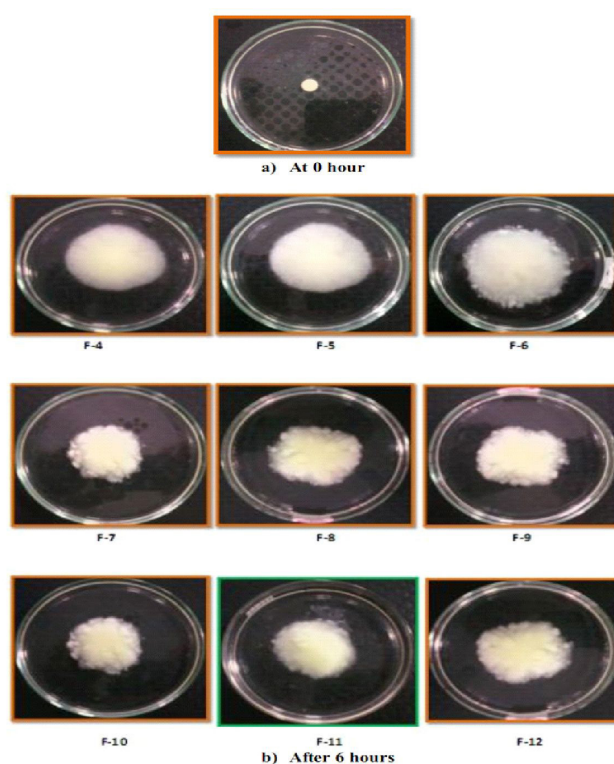
Evaluation parameters*	F1	F2	F3	F4	F5	F6
Weight variation (%)	4.76±0.075	3.25±0.081	4.52±0.045	5.21±0.052	4.85±0.081	5.87±0.085
Hardness (kg/cm ²)	5.03± 0.208	5.54±0.152	5.33±0.115	5.16±0.152	5.54±0.152	5.38±0.102
Friability (%)	0.093±0.022	0.107±0.263	0.112±0.112	0.204±0.074	0.107±0.263	0.176±0.075
Drug content (%)	99.08±0.04	100.5±0.20	99.86±0.15	100.03±0.23	99.62±0.20	100.60±0.33
Evaluation parameters*	F7	F8	F9	F10	F11	F12
Weight variation (%)	2.48±0.022	3.67±0.038	1.52±0.036	3.56±0.56	1.06± 0.59	2.34± 0.13
Hardness (kg/cm ²)	4.66±0.126	4.54±0.321	4.23±0.235	4.79±0.097	4.83± 0.112	4.56±0.145
Friability (%)	0.099±0.025	0.117±0.492	0.111± 0.039	0.196±0.012	0.145± 0.112	0.245±0.109
Drug content (%)	99.63±1.78	100.49±0.34	100.12±0.98	99.440±1.19	99.193± 0.19	100.36±1.02

*Average of three determinations

**FIGURE 1** - Comparison of *in vitro* swelling studies for F-1 to F-12.

formulation. Figure 3 shows the effect of diluents (MCC and spray dried lactose) on release rate of mercaptopurine tablets. Formulation F-1 containing MCC alone releases the drug faster when compared to F-2 and F-3, containing spray dried lactose and their combination. The drug release profile of F-1, F-2 and F-3 indicated the need for inclusion of a release modifier in the formulation. Sodium chloride in the concentration range of 5-10% was chosen as the release modifier. The release data obtained for formulations F-4 to F-12 which were prepared according 3² factorial design are given in Table VII and shown in Figure 4.

The formulation F-4 to F-6 containing 50% xanthan gum with 5%, 7.5% and 10% of sodium chloride showed percentage drug release of 58.51%, 66.13% and 77.85% at the end of 12h. The drug release was found to be less in formulation F-4 to F-6. Further formulations F-7 to F-9 (40% xanthan gum with 5%, 7.5% and 10% sodium chloride) and F-10 to F-12 (30% xanthan gum with 5%, 7.5% and 10% sodium chloride) were also prepared. F-7

**FIGURE 2** - Photographs of *in situ* gel tablets a) at 0 hour and b) after 6 hours.

and F-8 showed percentage drug release of 75.72% and 86.13% at 12 h. But F-9 released 91.3% of drug within 10 h due to loss of tablet integrity at higher sodium chloride concentration. F-10 and F-11 showed percentage drug release of 88.2% and 95.9% at 12 h. F-12 released 96.22% of drug at the end of 8h because the tablet started eroding after 1 h. As F-11 showed good swelling index and could sustain the release till 12 h, and found to be optimum when compared with the MKT formulation, which released the drug within 45 min (Figure 4).

TABLE VII - 3² Full factorial design layout

Batch Code	Variable levels in coded forms		Swelling index	CPR
	X ₁	X ₂		
F4	+1	-1	1160	51.57
F5	+1	0	1053	48.81
F6	+1	+1	866.6	66.09
F7	0	-1	920	70.18
F8	0	0	889.3	74.59
F9	0	+1	540	91.3
F10	-1	-1	872.2	75.2
F11	-1	0	826.6	83.56
F12	-1	+1	426.6	99.8
C1	-0.5	-0.5	858.9 (853.09)*	74.87 (76.16)*
C2	+0.5	+0.5	821.56 (825.63)*	73.18 (71.32)*

Coded values	Actual values (mg)	
	X ₁ (Xanthan gum)	X ₂ (Sodium chloride)
-1	30	5
0	40	7.5
+1	50	10
-0.5	35	6.25
+0.5	45	8.75

*Value in parenthesis indicates the predicted values.

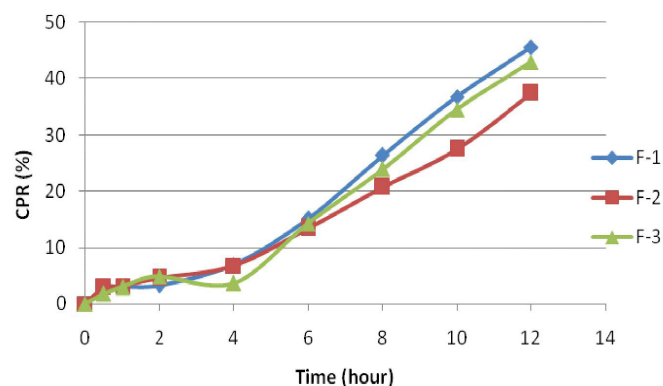


FIGURE 3 - Comparison of *in-vitro* release studies for F-1 to F-3.

Full factorial design

The formulations were optimized by applying 3² randomized full factorial design. The percentage of xanthan gum (X₁) and percentage of release modifier (X₂) were selected as independent variables. Swelling index and CPR were the dependent variables.

From the data of experimental design and parameters (Table VII) for factorial formulations F-4 to F-12, polynomial equations for two dependent variables

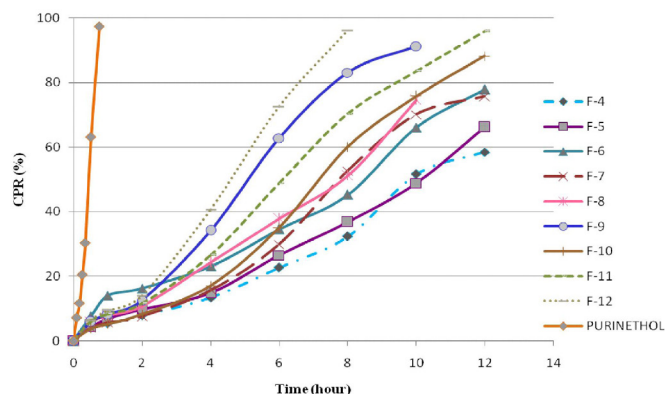


FIGURE 4 - Comparison of *in vitro* release studies of optimized formulations with MKT formulation.

(swelling index and *in vitro* release study) were derived using PCP Disso 2000V3 software.

The equation derived for swelling index is:

$$Y_1 = 839.36 + 159.03 X_1 - 186.50 X_2 \tag{3}$$

The equation derived for CPR is:

$$Y_2 = 74.835 - 14.887 X_1 + 10.04 X_2 - 2.765 X_1 X_2 - 7.390 X_1^2 + 5.781 X_2^2 \tag{4}$$

In equation (3) negative sign for coefficient of X_2 indicated that as the concentration of release modifier increased, swelling index decreases and positive sign for coefficient of X_1 indicates that an increase in polymer concentration increases the swelling index.

In equation (4) negative sign for coefficient of X_1 indicates that an increase in polymer concentration, CPR decreases. Positive sign for coefficient of X_2 indicates that CPR increases with increase in release modifier concentration. The negative sign for coefficient of X_1X_2 indicates that no significant interaction is observed between the 2 factors if they are changed simultaneously.

Response surface plots

Graphical presentation of the data can help to show the relationship between response and independent variables. Graphs gave information similar to that of the mathematical equations obtained from statistical analysis. The response surface graphs of swelling index and CPR are presented in Figure 5 and Figure 6, respectively.

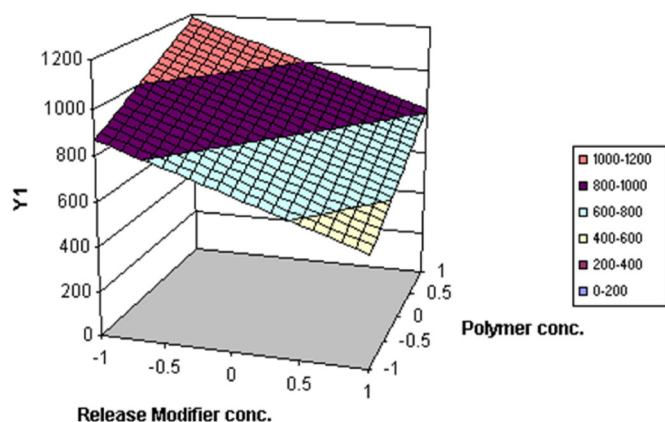


FIGURE 5 - Response surface plot showing effect of factorial variables on swelling index.

The response surface plots illustrated that as percentage of polymer increases, the swelling index increases and CPR decreases but when percentage of release modifier increases, swelling index decreases and CPR increases.

Check point formulation

Validity of the equations was verified by designing two check point formulations (C1 and C2). The swelling index and CPR predicted from the equations derived and those observed from experimental results are summarized in Table VII. The closeness of predicted and observed values for the swelling index and CPR indicates

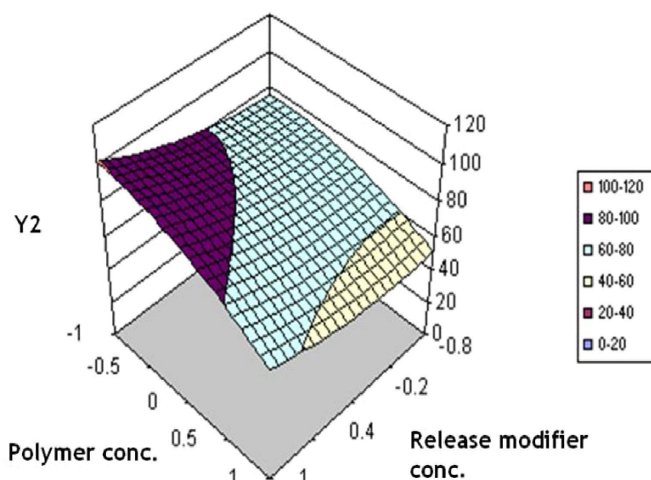


FIGURE 6 - Response surface plot showing effect of factorial variables on CPR.

the validity of derived equations for the dependent variables.

Kinetic modeling of drug release

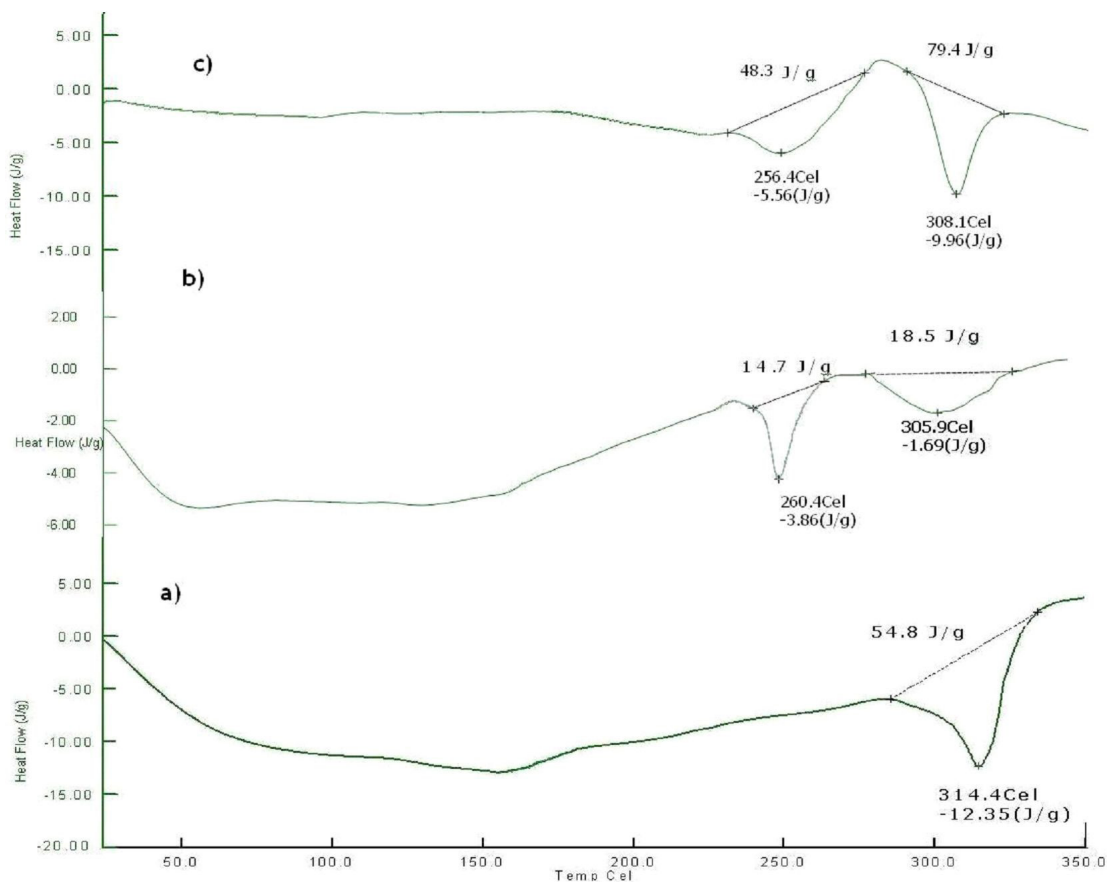
The dissolution data of batches F-4 to F-12 was fitted to various release kinetic models. Most of the formulation batches which follows Zero order release. Table VIII lists out the regression parameters obtained after fitting various release kinetic models to the *in vitro* dissolution data. The release profile of the best batch, F-11, was ranked in the order of Zero order > Korsmeyer-Peppas > Hixson Crowell cube root law > Matrix > First order with slope of 8.013 and R^2 value of 0.993. In Zero order, it is assumed that the release rate is independent of concentration.

Differential scanning calorimetry

DSC thermograms of pure drug, physical mixture and Final optimized formulation F-11 are shown in Figure 7. The thermogram of mercaptopurine exhibit single endothermic broad peak at 314.4 °C corresponding to the melting point of mercaptopurine. In case of physical mixture, the drug peak shifted to lower temperature of 305.9 °C with reduced intensity which may be due to baseline shift and an additional peak at 260 °C was observed due to presence of xanthan gum and microcrystalline cellulose (Melting point 255 °C–265 °C). Similar peaks were observed for final optimized formulation F-11 with increased intensity that might have occurred due to punching of tablets. Since there was no much difference in the melting point of the drug in all the thermographs, it was concluded that, the drug is in the same pure state even in the formulation F-11 without interacting with the polymers.

TABLE VIII - Kinetic modeling of drug release

Formulation	Drug release kinetics, correlation coefficients (r^2)					Release exponent (n)	Best fit model
	Matrix	Zero order	First order	Hixson Crowell	Korsemeyer-Peppas		
F4	0.8751	0.9745	0.9389	0.9527	0.9710	0.8183	Zero order
F5	0.8751	0.9722	0.9284	0.9482	0.9473	0.7693	Zero order
F6	0.8765	0.9707	0.9187	0.9414	0.9116	0.7071	Zero order
F7	0.8954	0.9892	0.9430	0.9634	0.9773	0.8992	Zero order
F8	0.9006	0.9899	0.8430	0.9341	0.9759	0.8584	Zero order
F9	0.9064	0.9902	0.7977	0.9032	0.9733	0.7801	Zero order
F10	0.8863	0.9841	0.9196	0.9506	0.9560	0.8900	Zero order
F11	0.9118	0.9936	0.8566	0.9336	0.9785	0.8283	Zero order
F12	0.8927	0.9900	0.8418	0.9215	0.9923	1.1393	Korsemeyer-Peppas

**FIGURE 7** - DSC spectras of a) Pure mercaptopurine b) Physical mixture and c) Formulation F-11.

X-ray diffraction studies

Diffraction spectra of pure mercaptopurine, physical mixture and formulation F-11 is shown in Figure 8. The X-ray pattern of pure mercaptopurine revealed a drug

fingerprint with intense and sharp peaks, indicating its crystalline nature as demonstrated by numerous distinct peaks observed at 11.8, 14.6, 16.8, 21.2, 23.6, 25.3, 25.9, 27.6, 29.5 and 30.4 (2θ). The prominent peaks of pure mercaptopurine were clearly seen at the same position

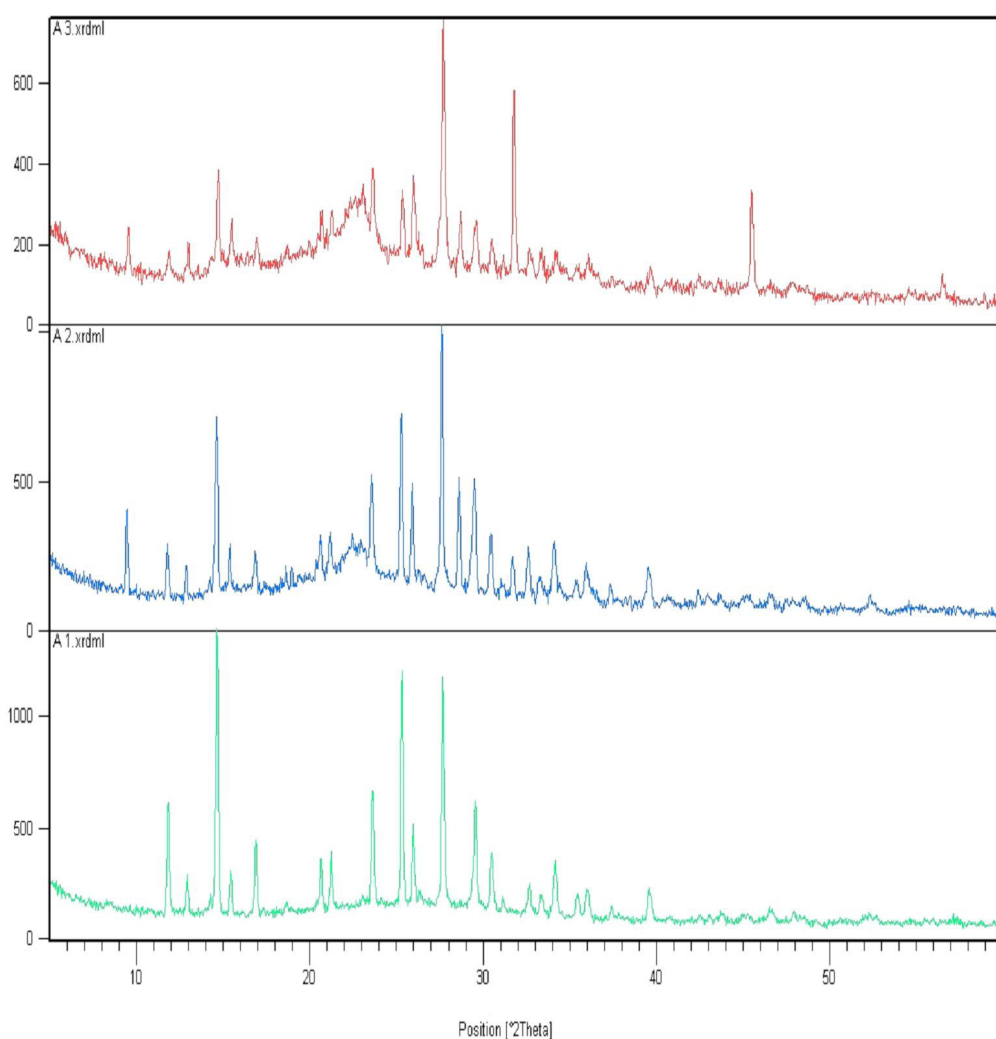


FIGURE 8 - XRD spectra of a) Pure mercaptopurine; b) Physical mixture and c) Formulation F-11.

in the physical mixture and in formulation F-11 with remarkably decreased intensity. No new peaks were observed, suggesting the absence of interaction between the drug and the polymer.

Effect of tablet shape and compression force on *in vitro* release and swelling

The change in the tablet shape and compression force alters the *in vitro* swelling and *in vitro* dissolution studies. The swelling index of oval shaped tablets of F-11 with different compression forces was found to be maximum at 1 h in the range of 1073-1280%. As the time progress, tablets started to erode (Figure 9). The *in vitro* dissolution studies of formulation F-11 with hardness 2, 3, 4, and 5 kg/cm² were found to be 7.0, 7.2, 7.4 and 8.4 h at t_{90} , respectively, whereas round tablet with hardness of 5 kg/cm², found to be 10.8 h at t_{90} (Figure 10).

Stability studies

The accelerated stability studies carried out for a duration of 3 months as per ICH guidelines indicated the best optimized formulation was stable. This was concluded following the evaluation of the formulation for physical appearance, drug content and drug release profile.

CONCLUSION

The present study was to design and develop novel *in situ* gel tablet of mercaptopurine for sustained drug delivery. By observing the low solubility problem and its erratic absorption throughout the GIT, an attempt was made to enhance drug absorption by making the drug release throughout the GIT. A systematic study using a 3² full-factorial design revealed that by selecting a suitable composition of xanthan gum and sodium chloride, the

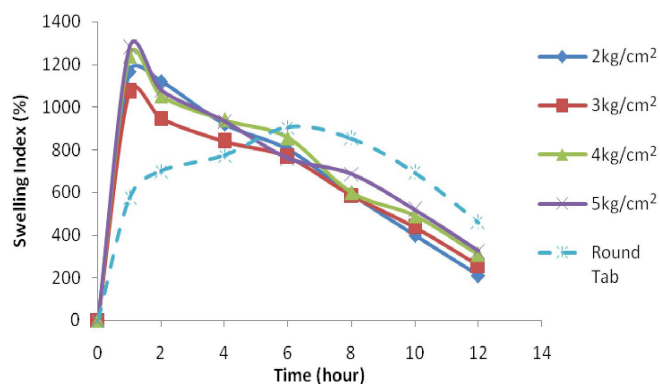


FIGURE 9 - Effect of compression force and tablet shape on swelling index for formulation F-11.

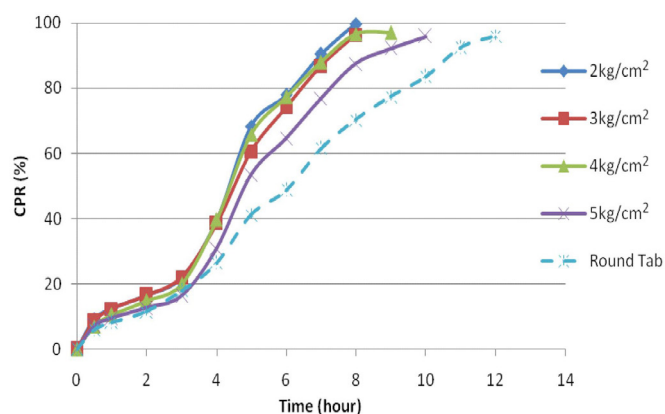


FIGURE 10 - Effect of compression force and tablet shape on *in vitro* release for formulation F-11.

desired swelling index and release profile can be achieved. The best optimized formulation showed good swelling index and extended the release up to 12h. Further *in vivo* investigations may prove the possibility of improvement in the oral bioavailability of the mercaptopurine as an *in situ* gel tablet.

ACKNOWLEDGMENTS

The authors are grateful to Prof. B. G. Shivananda, Principal, Al-Ameen College of Pharmacy, Bangalore, for his continuous support. Authors are also grateful to Dabur Pharmaceuticals Ltd., Bangalore, India for providing the gift sample of mercaptopurine monohydrate.

REFERENCES

BABU, G.V.M.M.; KUMAR, N.R.; SANKAR, K.H.; RAM, B.J.; KUMAR, N.K.; MURTHY, K.V.R. *In vivo* evaluation of modified gum karaya as a carrier for improving the oral bioavailability of a poorly water-soluble drug, nimodipine. *AAPS Pharm.Sci.Tech.*, v.3, n.2, p.1-9, 2002.

DESHMUKH, V.N.; SINGH, S.P.; SAKARKAR, D.M. Formulation and evaluation of sustained release metoprolol succinate tablet using hydrophilic gums as release modifiers. *Int. J. Pharm.Tech. Res.*, v.1, n.2, p.159-163, 2009.

DEVI, K.V.; BHOSALE, U.V. Formulation and optimization of polymeric nano drug delivery system of acyclovir using 3² full factorial design. *Int. J. Pharm.Tech. Res.*, v.1, n.3, p.644-54, 2009.

GENNARO, R.A. Extended release dosage forms. In: Remington: The Science and Practice of Pharmacy. Philadelphia: Lippincott Williams and Wilkins, 2000. 20. ed. v.1, p.660-6633.

INDIAN pharmacopoeia, Controller of publications. New Delhi. 4th edition. 1996;1:532-34.

ISHIKAWA, T.; WATANABE, Y.; TAKAYAMA, K.; ENDO, H.; MATSUMOTO, M. Effect of hydroxypropylmethylcellulose (HPMC) on the release profiles and bioavailability of a poorly water-soluble drug from tablets prepared using macrogol and HPMC. *Int. J. Pharm.*, v.202, n.1-2, p.173-178, 2000.

LAITY, P.R.; CAMERON, R.E. Synchrotron X-ray microtomographic study of tablet swelling. *Eur. J. Pharm. Biopharm.*, v.75, n.2, p.263-276, 2010.

MIKAC, U.; SEPE, A.; KRISTL, J.; BAUMGARTNER, S. A new approach combining different MRI methods to provide detailed view on swelling dynamics of xanthan tablets influencing drug release at different pH and ionic strength. *J. Control. Release.*, v.145, n.3, p.247-256, 2010.

MIYAZAKI, S.; NAKAYAMA, A.; ODA, M.; TAKADA, M.; ATTWOOD, D. Drug release from oral mucosal adhesive tablets of chitosan and sodium alginate. *Int. J. Pharm.*, v.118, n.2, p.257-263, 1995.

PARK, J.S.; SHIM, J.Y.; NGUYEN, K.V.; PARK, J.S.; SHIN, S.; CHOI, Y.W.; LEE, J.; YOON, J.H.; JEONG, S.H. A pharma-robust design method to investigate the effect of PEG and PEO on matrix tablets. *Int. J. Pharm.*, v.393, n.1-2, p.79-87, 2010.

PATEL, V.F.; PATEL, N.M. Intra-gastric floating drug delivery system of cefuroxime axetil: *in vitro* evaluation. *AAPS PharmSciTech.*, v.7, n.1, p.E17, 2005.

- SINGH, G.; PAI, R.S.; DEVI, V.K. Response surface methodology and process optimization of sustained release pellets using Taguchi orthogonal array design and central composite design. *J. Adv. Pharm. Technol. Res.*, v.3, n.1, p.30-40, 2012.
- SINGH, G.; PAI, R.S.; DEVI, V.K. Optimization of pellets containing solid dispersion prepared by Extrusion/Spheronization using Central Composite Design and Desirability function. *J. Young Pharmacists.*, v.4, n.3, p.146-156, 2012.
- ZACCHIGNA, M.; CATENI, F.; LUCA, G.D.; DRIOLI, S. A simple method for the preparation of PEG-mercaptopurine for oral administration. *Bioorg. Med. Chem. Lett.*, v.17, n.23, p-6607-6609, 2007.
- SOURABH, J.; YADAV, S.K.; PATIL, U.K. Preparation and evaluation of sustained release matrix tablet of Furosemide using Natural Polymers. *RJPT*, v.1, n.4, p.374-276, 2008.
- VAZQUEZ, M.J.; CASALDERREY, M.; DURO, R.; AMOZA, J.L.G.; PACHECO, R.M.; SOUTO, C.; CONCHEIRO, A. Atenolol release from hydrophilic matrix tablets with hydroxypropylmethylcellulose (HPMC) mixtures as gelling agent: effects of the viscosity of the HPMC mixture. *Eur. J. Pharm. Sci.*, v.4, n.1, p.39-48, 1996.

Received for publication on 30th March 2013

Accepted for publication on 19th November 2013

