



Phanerogamic flora and phytogeography of the Cloud Dwarf Forests of Ibitipoca State Park, Minas Gerais, Brazil

Breno Moreira^{1*} , Fabrício Alvim Carvalho², Luiz Menini Neto² & Fátima Regina Gonçalves Salimena²

¹Universidade Federal de Juiz de Fora, Programa de Pós Graduação em Ecologia, Campus Universitário, Rua José Lourenço Kelmer, s/n, Martelos, 36036-330, Juiz de Fora, MG, Brasil

²Universidade Federal de Juiz de Fora, Departamento de Botânica, Campus Universitário, Rua José Lourenço Kelmer, s/n, Martelos, 36036-330, Juiz de Fora, MG, Brasil

*Corresponding author: Breno Moreira, e-mail: biomota2009@hotmail.com

MOREIRA, B.; CARVALHO, F. A.; MENINI NETO, L.; SALIMENA, F. R. G. **Phanerogamic flora and phytogeography of the Cloud Dwarf Forests of Ibitipoca State Park, Minas Gerais, Brazil.** *Biota Neotropica*. 18(2): e20170506. <http://dx.doi.org/10.1590/1676-0611-BN-2017-0506>

Abstract: This study was developed in Ibitipoca State Park (ISP), a mountainous massif that stands out in the Serra da Mantiqueira, in the Southeastern Region of Brazil. The vegetation is represented by a phytophysognomic mosaic where areas of *campos rupestres* interspersed with cloud dwarf forests predominate, at altitudes of 1100 to 1700 m.s.m. The cloud dwarf forests exist in narrow altitude belts on the mountain peaks, immersed in a layer of clouds. They form a peculiar landscape high in the mountains by the short stature of the arboreal elements and richness of lichens and bryophytes, which develop under constant condensation of humidity, low temperatures, and frequent winds. The objective of the present work was to determine the floristic composition and phytogeography of the cloud dwarf forests of ISP. Twelve monthly campaigns were conducted to collect botanical material during the years 2014 and 2015. The collected material was deposited in the collection of the CESJ Herbarium. A total of 372 species, 209 genera, and 73 families of phanerogams were found. The richest families were Orchidaceae (84 spp.), Asteraceae (39 spp.), and Melastomataceae (21 spp). The genera with the greatest wealth were *Leandra* (09 spp.), *Epidendrum* (09 spp.), *Pleurothallis* (09 spp.), *Mikania* (07 spp.), and *Miconia* (07 spp). The arboreal habit was predominant with 103 species (27.7%), followed by 83 shrubs (22.3%), 82 epiphytic herbs (22%), 80 terrestrial herbs (21.5%), and 23 lianas (6.5%). The floristic composition presents elements typical of altitude vegetation, including species of *campos rupestres* and high epiphytes richness, especially of the families Orchidaceae and Bromeliaceae. The genera with tropical distribution represent 86.5%, whereas the temperate elements represent 13.5% of the total. The cloud dwarf forests presented similarity, at the family and gender levels, with the upper montane forests of the Andes, besides phytogeographic characteristics that allow to associate them to a transition environment between the *campos rupestres* and the upper montane forests of the Southeast Region of Brazil.

Keywords: Atlantic Forest, cloud forest, conservation, dense ombrophylous forest, Serra da Mantiqueira.

Flora fanerogâmica e fitogeografia das Nanoflorestas Nebulares do Parque Estadual do Ibitipoca, Minas Gerais, Brasil

Resumo: Este estudo foi desenvolvido no Parque Estadual do Ibitipoca (PEIB), um maciço montanhoso que se destaca na Serra da Mantiqueira, na Região Sudeste do Brasil. A vegetação é representada por um mosaico fitofisionômico onde predominam áreas de campos rupestres entremeadas às Nanoflorestas Nebulares, em altitudes de 1100 a 1700 m.s.m. As Nanoflorestas Nebulares ocorrem em cinturões de altitude estreitos, nos picos de montanhas, imersas na camada de nuvens. Formam uma paisagem peculiar no alto das montanhas, pela baixa estatura dos elementos arbóreos e riqueza de líquens e briófitas, que se desenvolvem sob constante condensação de umidade, baixas temperaturas e ventos frequentes. O presente trabalho teve como objetivo conhecer a composição florística e fitogeografia das Nanoflorestas Nebulares do PEIB. Foram realizadas 12 campanhas mensais para coleta de material botânico, durante os anos de 2014 e 2015. O material coletado foi depositado na coleção do Herbário CESJ. Foram encontradas 372 espécies, 209 gêneros e 73 famílias de fanerógamas. As famílias de maior riqueza foram Orchidaceae (84 spp.), Asteraceae (39 spp.) e Melastomataceae (21 spp). Os gêneros com maior riqueza

foram *Leandra* (09 spp.), *Epidendrum* (09 spp.), *Pleurothallis* (09 spp.) *Mikania* (07 spp.) e *Miconia* (07 spp.). O hábito arbóreo foi predominante, com 103 espécies (27,7%), seguido por 83 arbustivas (22,3%), 82 ervas epífitas (22%), 80 ervas terrestres (21,5%) e 23 lianas (6,5%). A composição florística apresenta elementos típicos de vegetação de altitude, incluindo espécies de campos rupestres. Destaque para a alta riqueza de epífitas, especialmente das famílias Orchidaceae e Bromeliaceae. Os gêneros com distribuição tropical representam 86,5%, enquanto os elementos temperados representam 13,5% do total. As Nanoflorestas Nebulares apresentaram similaridade, em nível de família e gênero, com as florestas montana e altmontana dos Andes, além de características fitogeográficas que permitem associá-las a um ambiente de transição entre os campos rupestres e as florestas altomontanas da Região Sudeste do Brasil.

Palavras-chave: *Conservação, Floresta Atlântica, Floresta Nebular, Floresta Ombrófila Densa, Serra da Mantiqueira.*

Introduction

The regions of tropical mountains are considered of great importance for the conservation of natural resources, presenting high biological diversity and a high index of endemism, propitiated by the variety of environments associated with biotic and abiotic factors that provide places favorable to speciation (Martinelli 2007). These regions represent refuges and corridors for regional and continental migrations, and often have richer plant diversity than the adjacent lowlands (Martinelli 2007). Nevertheless, little is known about the ecology, biogeography, and natural history of these formations, which have unique physiognomic characteristics (Körner 1999).

The upper montane vegetation in the Southeastern Region of Brazil is constituted by a vegetative mosaic composed by forest and field formations, which vary according to the geographic region and the altitude gradients (Oliveira-Filho 2009). Changes in floristic composition related to altitudinal gradients are strongly influenced by local environmental variables, since different altimetric heights have different temperature conditions, air humidity, water availability, exposure to winds, and classes of depth and soil drainage (Rahbek 2005, Grytnes & McCain 2007, Slik et al. 2010). The increase in altitude and topographic irregularity in mountainous environments can decisively influence the heterogeneity of landscapes, interfering in the circulation of masses of air and exposure to the sun rays (Webster 1995). The influence of altitude on species diversification is complex. It is believed that the decrease in atmospheric pressure and temperature, as well as the increase in wind speed and solar radiation, may be related to high plant diversity (Körner 1999, Rahbek 2005).

The Serra da Mantiqueira is one of the largest and most important mountain chains in the Southeastern Region of Brazil (Almeida & Carneiro 1998). It houses more than half of the endangered species of the fauna of Minas Gerais, with an expressive endemism of plant species (Costa & Herrmann 2006). It extends from the Caldas Plateau and the Campos do Jordão Plateau in the south of Minas Gerais, a border with São Paulo, to the Plateau of Caparaó, on the border between Minas Gerais and Espírito Santo, with an approximate area of 13,176 km² (Moreira & Camelier 1977, Almeida & Carneiro 1998). These mountain ranges have rocks dating from the Pre-Cambrian period and later shaped by large archways in the Late Cretaceous (Teixeira & Cordani 2007). The Serra da Mantiqueira was part of a large crystalline plateau, and in the Triassic period this plateau underwent a process of bending and fracturing. After extensive erosive work and geological processes during

the quaternary period, this plateau became massive, with isolated points and deep valleys (Meireles et al. 2014).

In regions of occurrence of nebulary forests, there are areas with climatic and topographic conditions favorable to the regular formation of fogs. These areas present well-developed natural forests that, because they remain frequently enveloped in fog and clouds, are generally called cloud forests (Bruijnzeel et al. 2010). These forests account for only 2.5% of the total area of tropical forests in the world, with an overall surface area of approximately 380,000 km² (Bubb et al. 2004). In Brazil, they are represented mainly by the montane and upper montane rainforests along the Serra do Mar in the states of Santa Catarina, Paraná, São Paulo, and Rio de Janeiro, in small stretches of the Serra da Mantiqueira de Minas Gerais, and still high in the plateaus and mountains of the Amazon, such as Pico da Neblina and Monte Roraima (Oliveira-Filho 2009; Bertoncello et al. 2009). These forests are responsible for hidden precipitation, that is, additional water entry into the ecosystem through the fog, by interception of water through the treetops and subsequent drainage to the forest floor (Arcova 2013). Thus, for these localities, the abstraction of water from the atmosphere constitutes an important process of the hydrological cycle of the hydrographic basins (Bruijnzeel et al. 2010, Arcova 2013).

The forests of Serra da Mantiqueira are still little known, and their floristic composition and richness have been described in some places by Oliveira-Filho & Fontes (2000), França & Stehmann (2004), Meireles et al. (2008), Valente et al. (2011), Salimena et al. (2013), Meireles et al. (2014), Santiago et al. (2018), Oliveira-Filho et al. (2013), and Pompeu et al. (2014), among others. Nevertheless, the great environmental heterogeneity presented by this mountain chain has not been sufficiently detailed (Martinelli 2007). Among the least known forest formations are the cloud dwarf forests (*sensu* Oliveira-Filho et al. 2013).

The aspects that involve the cloud dwarf forests are related to the fact of their immersion in the cloud layer and to the local hydrological cycle (Oliveira-Filho & Fontes 2000). They occur in narrow altitude belts, in ridges of mountainous relief, or in mountain peaks, with a distribution of species similar to archipelagos (Vazquez-Garcia 1995). The abundance, diversity, and distribution of cloud dwarf forest species are determined by global and regional climatic processes that operate on the phylogenetic lines observed over time on a geographic scale (Brown et al. 1996). The geographic distribution of the taxa is unique, being determined by their autoecological characteristics, geoclimatic barriers, climatic changes, and historical ecological processes (Brown et al. 1996). The discontinuous distribution of the altitude massifs of the Serra da Mantiqueira promotes

the isolation of the cloud dwarf forests and the species that compose them, being able to restrict gene flow and to prevent the connectivity between the different populations. This process favors the occurrence of species and local endemism (Safford 1999). The species that occur in cloud dwarf forests tolerate adverse conditions such as freezing night temperatures, high temperatures during the day, frost, climatic seasonality, and physical changes such as high light intensity and low atmospheric pressure (Oliveira-Filho & Fontes 2000), with the presence of haze (Bruijnzeel et al. 2010). In addition, it is important to note that the dwarf forests are more likely to be found in high-altitude areas.

Seeking to broaden the knowledge about the altitude formations of the Serra da Mantiqueira, this study was developed with the objective of determining the floristic composition of the cloud dwarf forests of Ibitipoca State Park (ISP) and the contribution of the tropical and temperate distribution elements in this phytogeography.

Material and Methods

1. Study area

ISP is located in Minas Gerais, between the municipalities of Lima Duarte, Bias Fortes, and Santa Rita do Ibitipoca, at coordinates 21°40'-21°44' S and 43°52'-43°55' W and covers an area of 1,488 ha. The region's climate is classified as Cwb, according to Köppen (1948), with dry winters and rainy and mild summers. The Serra do Ibitipoca has relief formed by high escarpments or hills, with variable altitudes between 1100 m and 1784 m (Rodela & Tarifa 2002) (Figure 1).

ISP is one of the many areas of rocky outcropping in Southeastern Brazil, where there are Proterozoic metastatic rocks of the Andrelândia Group, mainly quartzites and schists, which are on a basement formed of orthogneisses and migmatites belonging to the Mantiqueira Group (Nummer 1991, Corrêa Neto & Baptista Filho 1997). Soils are acidic, alkaline, dystrophic, kaolinitic, and shallow, with little water retention capacity, and support a mosaic of complex vegetation (Dias et al. 2002).

The predominant landscape in ISP is represented by savannas and prairies, described in the literature as *campos rupestres*, and most of the forest cover is cloud dwarf forests that cover about 226 ha or 15.6% of the surface of the park (Oliveira-Filho et al. 2013). The distribution of most cloud dwarf forests in ISP appears to be closely related to the local drainage network, housed in depressions in the ground and in the bottom of valleys, where there is high deposition of sediment and water (Oliveira-Filho et al. 2013). The identification and recognition of the vegetative types of ISP in this work follow the proposal of Oliveira-Filho et al. (2013) (Figure 2).

2. Floristic composition

In order to evaluate the floristic composition of the cloud dwarf forests of ISP, 12 field campaigns were carried out to collect botanical material, from September 2014 to September 2015, lasting three days each, in different areas of cloud dwarf forests distributed in varying altimetric heights, between 1100 and 1700 m.s.m. The collection was performed by traversing trails inside the dwarf forests, seeking to cover as much of the area as possible, following the method of walking (Figueiras et al. 1994). The classification of the species habit followed Gonçalves & Lorenzi (2007).

The collected material was herborized according to the techniques of Mori et al. (1989) and deposited in the collection of the CESJ Herbarium of the Federal University of Juiz de Fora (acronym according to Thiers 2016), where it was identified with the help of specialized literature and comparison with the collection of ISP already deposited in the collection, in addition to consulting specialists. The names of the angiosperm families followed the system proposed by APG IV (2016). The synonymy, the spelling and the authorship of the names of the species were conferred through Flora do Brasil 2020 (under construction). Materials deposited in the collections of the herbariums CESJ, BHC, ESAL, and RB (acronyms according to Thiers 2016) from botanical works in ISP for more than 40 years were included in the floristic listing.

3. Phytogeography

For the phytogeography analyses, the genera were classified into seven phytogeographic groups delimited based on their current centers of diversity cited by Safford (2007). The groups are: Austral-Antarctic - from temperate regions of the Southern hemisphere; Holistic - center of diversity in temperate Northern hemisphere; Generalized Tempering; Cosmopolitan - worldwide distribution; Tropical Species - at least 5% of species on a second continent; Neotropical; and Endemic to Brazil. The geographic distribution of the species was based on the literature and on specialized sites, such as speciesLink (CRIA 2001), w3Tropicos (MBG 2014), and BFG (2015).

Results

1. Floristic composition

A total of 372 species were recorded, distributed in 209 genera and 73 families of phanerogams, with only one species, *Podocarpus sellowii* Klotzsch (Podocarpaceae), representative of the group of gymnosperms. Of the total specimens, 337 were identified at a specific level, the remaining 28 at the gender level, and seven at the family level (Table 1).

The richest families are Orchidaceae (84 spp.), Asteraceae (39 spp.), Melastomataceae (21 spp.), Bromeliaceae (20 spp.), Myrtaceae (18 spp.), and Rubiaceae (17 spp.) (Figure 3).

The genera with the greatest richness were *Epidendrum* (nine spp.), *Leandra* (nine spp.), *Pleurothallis* (nine spp.), *Mikania* (seven spp.), *Miconia* (seven spp.), *Tillandsia* (six spp.), *Solanum* (six spp.), and *Myrcia* (six spp.) (Figure 4).

Among the 372 species found, 103 are arboreal (27.7%), 83 shrub (22.3%), 82 epiphytic herbs (22%), 80 terrestrial herbs (21.5%), and 23 lianas (6.5%). Among the tree species, the families Myrtaceae with 17 species and Melastomataceae with 14, with greater richness, stand out. Among the shrubs, the greatest wealth is of the family Asteraceae with 21 spp., followed by Rubiaceae (eight) and Melastomataceae (seven). The terrestrial herbaceous habit was highlighted among the Orchidaceae families with 23 species, Asteraceae with nine, and Bromeliaceae with eight. Epiphytic species predominated in the Orchidaceae family, with 61 species. Among the lianas, the most representative family was Asteraceae with six species, followed by Apocynaceae and Smilacaceae with four each.

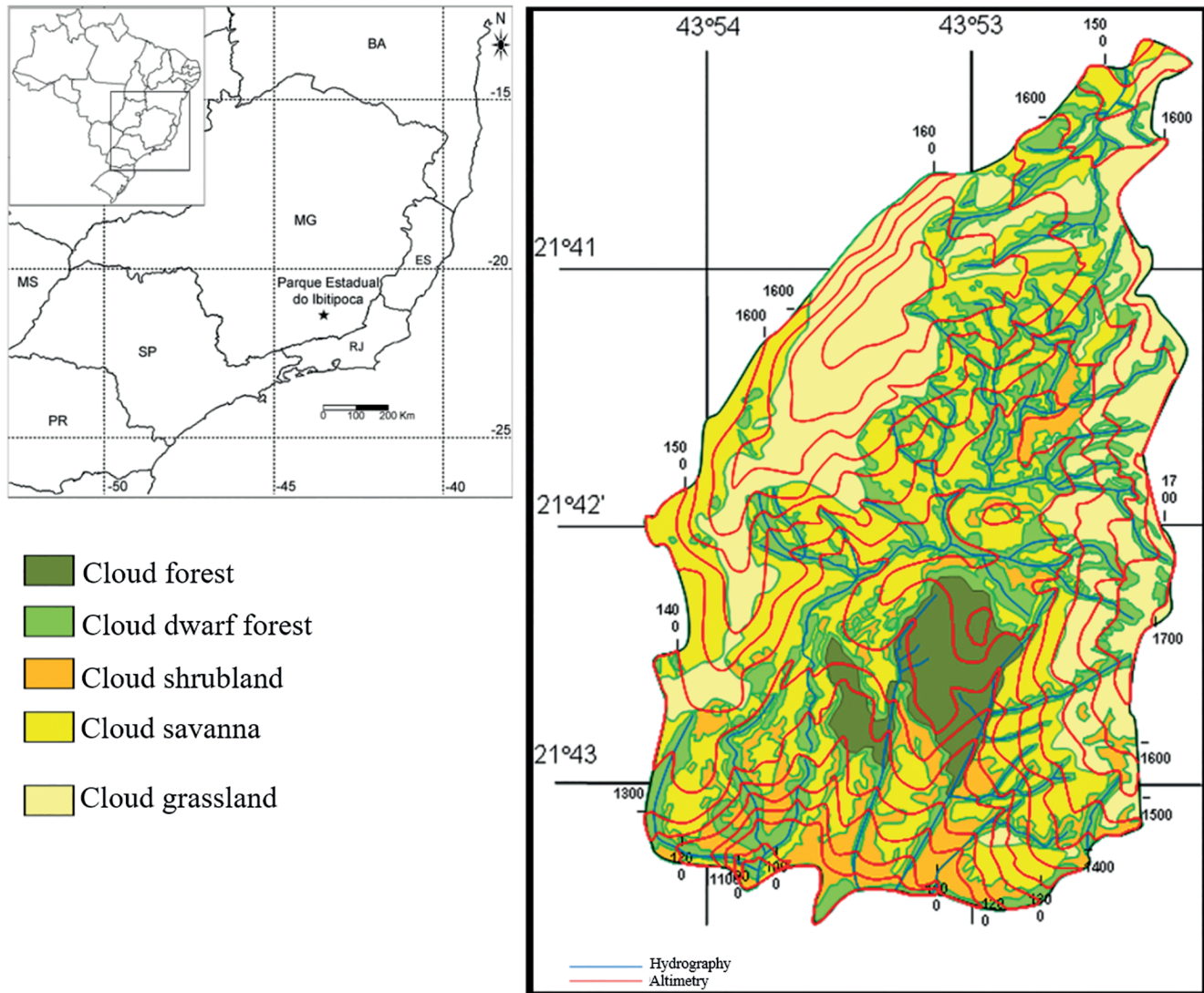


Figure 1. Geographic location of Ibitipoca State Park, Serra da Mantiqueira, Southeastern Brazil, with emphasis on its phytogeographies (adapted from Oliveira-Filho et al. 2013).

Among the species found in the cloud dwarf forests of ISP, seven have some degree of extinction threat: *Octomeria wawrae*, *Ocotea odorifera*, and *Vriesea penduliflora* classified as “endangered”; *Hindsia ibitipocensis* as “critically endangered” (CR); and *Baccharis lychnophora*, *Schlumbergera opuntoides*, and *Sinningia tuberosa* as “vulnerable” (VU) (Martinelli & Morais 2013).

2. Phytogeography

The genera with a tropical diversity center represent 86.5% of the total, distributed among 126 neotropical (60%), 45 large tropical (21.5%), and 10 endemic genera of Brazil (5%). The genus with a diversity center in temperate regions corresponded to 13.5% of the total, distributed among seven genera austral-antarctic (3.5%), one of holarian origin (0.5%), two of large temperate origin (1%), and 17 (8.5%) cosmopolitan (Table 2).

Discussion

1. Floristic composition

In the cloud dwarf forests of ISP is the presence of a dense understory, where the arboreal individuals branch to a low height. The floristic profile presents typical characteristics of forest formations of altitude. However, it also presents characteristic species of fields and savannas (Oliveira-Filho et al. 2013). The cloud dwarf forests of ISP present a canopy of about 10 meters, with few emergent trees such as *Eugenia brasiliensis*, *Cupania zanthoxyloides*, and *Solanum mauritanium*. Just below the sub-forest, at about five meters, we can find species such as *Agarista pulchella*, *Leandra melastomoides*, *Leandra aurea*, *Myrcia splendens*, and the palm tree *Geonoma schottiana*, which has a large fruit production that serves as food for the local fauna (Oliveira-Filho et al. 2013). Soils, derived from quartzite, are generally shallow and poor in minerals, but the feedback from litter decomposition can sustain medium-sized vegetation (Oliveira-Filho et al. 2013).

Cloud Dwarf Forests of Ibitipoca State Park

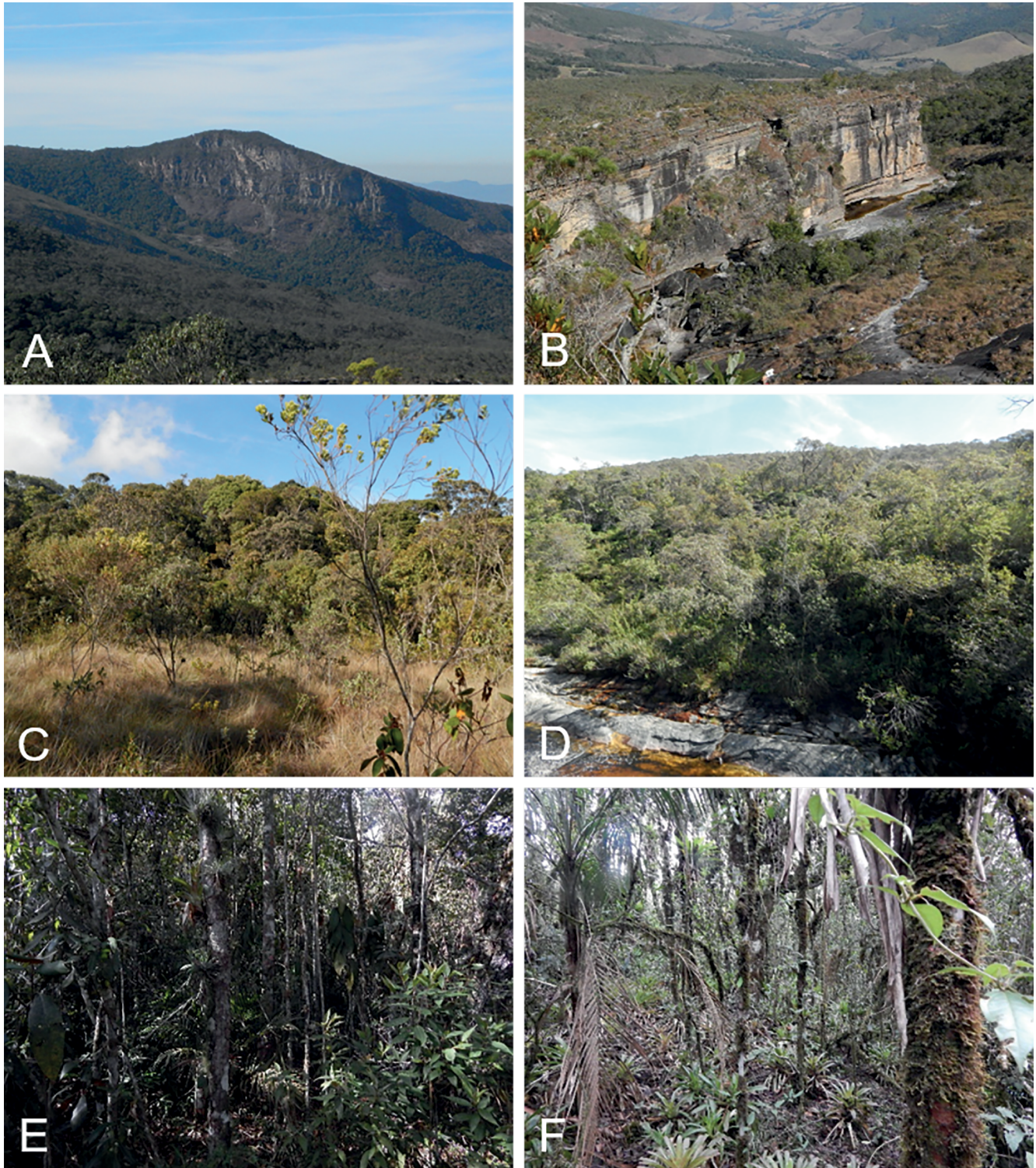


Figure 2. A-B. Phytophysiognomies of Ibitipoca State Park; C-D. Details of cloud dwarf forests border, highlighting the transition environments; E-F. Details of inside cloud dwarf forests, Ibitipoca State Park, Minas Gerais, Brazil.

Table 1. Composition of the phanerogamic flora of the cloud dwarf forests of Ibitipoca State Park, Serra da Mantiqueira, Southeastern Brazil. The species are listed by family and in alphabetical order, accompanied by the habit (Tr - tree, Sh - shrub, Li - liana, Th - terrestrial herb, Eh - epiphytic herb) and the testimonial material that is deposited in the herbariums CESJ, BHC B, ESAL, and RB.

Family/Species	Habit	Voucher
Acanthaceae		
<i>Justicia</i> sp1	Li	B.Moreira 116
<i>Mendoncia mollis</i> Lindau	Li	B.Moreira 233
Alstroemeriaceae		
<i>Alstroemeria cunha</i> Vell.	Th	B.Moreira 319
Amaranthaceae		
<i>Alternanthera martii</i> (Moq.) R.E.Fries	Sh	B.Moreira 283
Annonaceae		
<i>Guatteria australis</i> A. St-Hil.	Tr	Fontes 108
Apiaceae		
<i>Apiaceae</i> sp1	Th	B.Moreira 332
Apocynaceae		
<i>Aspidosperma parvifolium</i> A. DC.	Tr	Fontes 071
<i>Ditassa mucronata</i> Mart.	Li	B.Moreira 164
<i>Forsteronia australis</i> Müll.Arg.	Li	B.Moreira 036
<i>Mandevilla pohliana</i> (Stadelm.) A.H.Gentry	Sh	B.Moreira 056
<i>Oxypetalum</i> sp1	Li	B.Moreira 123
Aquifoliaceae		
<i>Ilex paraguariensis</i> A.St.-Hil.	Sh	B.Moreira 060
Araceae		
<i>Anthurium minarum</i> Sakuragui & Mayo	Eh	B.Moreira 010
<i>Anthurium scandens</i> (Aubl.) Engl.	Eh	B.Moreira 062
<i>Anthurium</i> sp1	Th	B.Moreira 161
<i>Philodendron appendiculatum</i> Nadruz & Mayo	Th	R.C.Forzza 3638
Araliaceae		
<i>Schefflera angustissima</i> (Marchal) Frodin	Tr	B.Moreira 247
<i>Schefflera calva</i> (Cham.) Frodin & Fiaschi	Tr	Fontes 068
Arecaceae		
<i>Geonoma schottiana</i> Mart.	Tr	B.Moreira 003
Asteraceae		
<i>Ageratum fastigiatum</i> (Gardner) R.M. King & H.Rob.	Sh	B.Moreira 240
<i>Achyrocline satureioides</i> (Lam.) DC.	Th	B.Moreira 342
<i>Aspilia duarteana</i> J.U.Santos	Sh	B.Moreira 188
<i>Austrocritonia velutina</i> (Gardner) R.M.King & H.Rob	Tr	Fontes 142
<i>Baccharis lychnophora</i> Gardner	Sh	B.Moreira 190
<i>Baccharis platypoda</i> DC.	Sh	B.Moreira 212
<i>Baccharis rufidula</i> (Spreng.) Joch. Mull.	Sh	B.Moreira 249
<i>Baccharis serrulata</i> (Lam.) Pers.	Sh	B.Moreira 344
<i>Bidens pilosa</i> L.	Th	B.Moreira 330
<i>Bidens rubifolia</i> Kunth	Sh	B.Moreira 177
<i>Bidens segetum</i> Mart. ex Colla	Sh	B.Moreira 300
<i>Chaptalia nutans</i> (L.) Pol.	Th	B.Moreira 331
<i>Chromolaena maximiliani</i> (Schrad. ex DC.) R.M.King & H.Rob.	Sh	B.Moreira 270
<i>Crepis japonica</i> (L.) Benth.	Th	B.Moreira 277

Continued Table 1.

Family/Species	Habit	Voucher
<i>Dendrophorbium pluricephalum</i> (Cabrera) C.Jeffrey	Sh	Fontes 143
<i>Eremanthus erythropappus</i> (DC.) MacLeish	Tr	B.Moreira 007
<i>Eremanthus incanus</i> (Less.) Less	Tr	B.Moreira 374
<i>Eupatorium balansae</i> Hieron.	Sh	B.Moreira 346
<i>Gochnatia paniculata</i> (Less) Cabrera	Sh	Fontes 175
<i>Leptostelma maxima</i> D. Don	Th	B.Moreira 198
<i>Lessingianthus ibitipocensis</i> Borges & Dematt.	Sh	B.Moreira 197
<i>Lessingianthus</i> sp1	Sh	B.Moreira 375
<i>Mikania acuminata</i> DC.	Li	B.Moreira 230
<i>Mikania buddleiifolia</i> DC.	Li	B.Moreira 015
<i>Mikania burchellii</i> Baker	Li	B.Moreira 290
<i>Mikania decumbens</i> Malme	Sh	B.Moreira 242
<i>Mikania lindbergii</i> Baker	Li	B.Moreira 338
<i>Mikania</i> sp1	Li	B.Moreira 002
<i>Mikania</i> sp2	Li	B.Moreira 354
<i>Praxelis clematidea</i> (Griseb.) R.M.King & H.Rob.	Sh	B.Moreira 173
<i>Praxelis kleinioides</i> (Kunth) Sch. Bip.	Th	B.Moreira 238
<i>Pseudobrickellia brasiliensis</i> (Spreng) R.M.King & H.Rob	Sh	Fontes 001
<i>Senecio emiliopsis</i> C. Jeffrey	Th	B.Moreira 308
<i>Taraxacum</i> sp1	Th	B.Moreira 265
<i>Trichogonia villosa</i> (Spreng.) Sch.Bip. ex Baker	Sh	B.Moreira 121
<i>Tridax procumbens</i> L.	Th	B.Moreira 276
<i>Trixis antimenorrhoea</i> (Schrank) Kuntze	Sh	B.Moreira 325
<i>Verbesina glabrata</i> Hook. & Arn.	Sh	B.Moreira 137
<i>Vernonanthura phosphorica</i> (Vell.) H.Rob.	Sh	B.Moreira 360
Balanophoraceae		
<i>Langsdorffia hypogaea</i> Mart.	Th	B.Moreira 262
Begoniaceae		
<i>Begonia angulata</i> Vell.	Sh	S.G.Furtado 321
<i>Begonia rufa</i> Thunb.	Sh	B.Moreira 081
Bignoniaceae		
<i>Fridericia speciosa</i> Mart.	Sh	B.Moreira 049
<i>Handroanthus albus</i> (Cham.) Mattos.	Tr	Fontes 133
<i>Handroanthus chrysotrichus</i> (Mart. ex DC.) Mattos	Tr	Fontes 179
Boraginaceae		
<i>Cordia superba</i> Cham.	Tr	Fontes 065
<i>Cordia</i> sp1	Tr	B.Moreira 120
Bromeliaceae		
<i>Aechmea bromeliifolia</i> (Rudge) Baker	Th	Leme 1474
<i>Aechmea nudicaulis</i> (L.) Griseb.	Th	R.Monteiro 13
<i>Aechmea aiuruocensis</i> Leme	Th	B.Moreira 205
<i>Billbergia alfonsioannis</i> Reitz	Eh	B.Moreira 282
<i>Billbergia distachia</i> (Vell.) Mez	Th	B.Moreira 005
<i>Neoregelia ibitipocensis</i> (Leme) Leme	Th	R.C.Forzza 3338
<i>Nidularium ferdinandocoburgii</i> Wawra	Th	B.Moreira 031

Continued Table 1.

Family/Species	Habit	Voucher
<i>Tillandsia gardneri</i> Lindl.	Eh	B.Moreira 152
<i>Tillandsia geminiflora</i> Brongn.	Eh	B.Moreira 026
<i>Tillandsia stricta</i> Sol.	Eh	B.Moreira 038
<i>Tillandsia tenuifolia</i> L.	Eh	B.Moreira 077
<i>Tillandsia usneoides</i> (L.) L.	Eh	B.Moreira 288
<i>Tillandsia</i> sp1	Eh	B.Moreira 092
<i>Vriesea bituminosa</i> Wawra	Th	R.F.Monteiro 28
<i>Vriesea friburgensis</i> Mez	Eh	B.Moreira 030
<i>Vriesea guttata</i> Linden & André	Th	R.F.Monteiro 25
<i>Vriesea heterostachys</i> (Baker) L.B.Sm.	Eh	B.Moreira 185
<i>Vriesea longicaulis</i> (Baker) Mez	Th	G.Martinelli 15314
<i>Vriesea penduliflora</i> L.B.Sm.	Eh	B.Moreira 058
<i>Wittrockia gigantea</i> (Baker) Leme	Eh	B.Moreira 232
Cactaceae		
<i>Hatiora salicornioides</i> (Haw.) Britton & Rose	Th	M.C.Brügger 21541
<i>Lepismium houlettianum</i> (Lem.) Barthlott	Eh	S.G.Furtado 313
<i>Rhipsalis floccosa</i> Salm-Dyck ex Pfeiff.	Th	L.Krieger 8589
<i>Rhipsalis juengeri</i> Barthlott & N.P.Taylor	Eh	B.Moreira 203
<i>Rhipsalis pulchra</i> Loefgr.	Th	L.Krieger 9296
<i>Schlumbergera opuntioides</i> (Loefgr. & Dusén) D.R. Hunt	Eh	D.C.Zappi 258
Caryophyllaceae		
<i>Cerastium dicotrichum</i> Fenzl ex Rohrb.	Eh	B.Moreira 227
Chloranthaceae		
<i>Hedyosmum brasiliense</i> Mart. ex Miq.	Tr	B.Moreira 103
Clethraceae		
<i>Clethra scabra</i> Pers.	Tr	B.Moreira 147
Clusiaceae		
<i>Clusia criuva</i> Cambess.	Tr	B.Moreira 111
<i>Clusia organensis</i> Planch. & Triana	Tr	Fontes 094
<i>Tovomitopsis paniculata</i> (Spreng.) Planch. & Triana	Tr	B.Moreira 113
Commelinaceae		
<i>Commelina obliqua</i> Vahl	Th	B.Moreira 168
<i>Dichorisandra hexandra</i> (Aubl.) C.B.Clarke	Th	B.Moreira 148
<i>Tripogandra diuretica</i> (Mart.) Handlos	Th	B.Moreira 166
Convolvulaceae		
<i>Ipomoea</i> sp1	Th	B.Moreira 176
Cucurbitaceae		
<i>Wilbrandia hibiscoides</i> Silva Manso	Li	B.Moreira 102
Cunoniaceae		
<i>Lamanonia grandistipularis</i> (Taub.) Taub.	Tr	Fontes 157
<i>Weinmannia discolor</i> Gardner	Sh	B.Moreira 112
<i>Weinmannia paulliniifolia</i> Pohl ex Ser.	Tr	Fontes 004
Cyperaceae		
<i>Rhynchospora exaltata</i> Kunth	Th	B.Moreira 050
<i>Scleria latifolia</i> Sw.	Th	B.Moreira 078

Continued Table 1.

Family/Species	Habit	Voucher
Ericaceae		
<i>Agarista ericoides</i> Taub.	Sh	B.Moreira 040
<i>Agarista eucalyptoides</i> (Cham. & Schltld.) G.Don	Sh	Fontes 040
<i>Agarista glaberrima</i> (Sleumer) Judd	Tr	Fontes 005
<i>Agarista pulchella</i> Cham. Ex G.Don	Sh	B.Moreira 257
Eriocaulaceae		
<i>Paepalanthus harmsii</i> Ruhland	Th	B.Moreira 039
Erythroxylaceae		
<i>Erythroxylum cuneifolium</i> (Mart.) O.E.Schulz	Sh	Fontes 158
<i>Erythroxylum gonocladum</i> (Mart.) O.E. Schulz.	Sh	B.Moreira 125
Euphorbiaceae		
<i>Alchornea triplinervia</i> (Spreng.) Müll.Arg	Tr	B.Moreira 089
Fabaceae		
<i>Ancistrotropis peduncularis</i> (Kunth) A. Delgado	Li	B.Moreira 226
<i>Centrosema coriaceum</i> Benth.	Li	B.Moreira 209
<i>Chamaecrista brachyrachis</i> (Harms) H.S.Irwin & Barneby	Sh	B.Moreira 211
<i>Chamaecrista catharticooides</i> H.S.Irwin & Barneby	Sh	Fontes 006
<i>Chamaecrista itambana</i> (Benth.)Irwin & Barneby	Sh	B.Moreira 104
<i>Chamaecrista</i> sp1	Tr	B.Moreira 165
<i>Galactia martii</i> DC.	Li	B.Moreira 228
<i>Machaerium lanceolatum</i> (Vell.) J.F.Macbr.	Tr	Fontes 148
<i>Mimosa dolens</i> Vell.	Sh	B.Moreira 193
<i>Periandra mediterranea</i> (Vell.) Taub.	Sh	B.Moreira 097
<i>Senna macranthera</i> (Vell.) Irwin & Barneby	Tr	B.Moreira 210
<i>Senna pendula</i> (Humb.& Bonpl.ex Willd.) H.S.Irwin & Barneby	Tr	B.Moreira 210
Fabaceae sp1	Sh	B.Moreira 104
Fabaceae sp2	Tr	B.Moreira 109
Fabaceae sp3	Tr	B.Moreira 284
Gentianaceae		
<i>Calolisianthus pendulus</i> (Mart.) Gilg	Th	B.Moreira 143
Gesneriaceae		
<i>Anetanthus gracilis</i> Hiern	Th	Gonzaga 232
<i>Nematanthus strigillosus</i> (Mart.) H.E.Moore	Sh	B.Moreira 027
<i>Vanhouttea brueggeri</i> Chautems	Sh	B.Moreira 068
<i>Vanhouttea hilariana</i> Chautems	Sh	B.Moreira 088
<i>Sinningia magnifica</i> (Otto & A.Dietr.) Wiehler	Th	R.C.Forzza 27323
<i>Sinningia tuberosa</i> (Mart.) H.E.Moore	Th	B.Moreira 159
Griselinaceae		
<i>Griselinia ruscifolia</i> (Clos) Taub.	Sh	S.G.Furtado 322
Hypericaceae		
<i>Vismia brasiliensis</i> Choisy	Tr	Fontes 134
Lamiaceae		
<i>Eriope macrostachya</i> Mart. ex Benth.	Sh	B.Moreira 001
<i>Hyptidendron asperrimum</i> (Sprengel) Harley	Tr	Fontes 181
<i>Hyptis monticola</i> Mart. ex Benth	Sh	B.Moreira 304

Continued Table 1.

Family/Species	Habit	Voucher
<i>Mesosphaerum suaveolens</i> (L.) Kuntze	Th	B.Moreira 218
<i>Vitex sellowiana</i> Cham.	Tr	B.Moreira 091
Lauraceae		
<i>Ocotea odorifera</i> (Vell.) Rohwer	Tr	B.Moreira 260
<i>Ocotea pulchella</i> (Nez & Mart.) Mez	Tr	B.Moreira 236
<i>Ocotea</i> sp1	Tr	B.Moreira 127
<i>Ocotea</i> sp2	Tr	B.Moreira 132
<i>Ocotea</i> sp3	Tr	B.Moreira 126
<i>Nectandra lanceolata</i> Nees	Tr	B.Moreira 252
Loasaceae		
<i>Aosa</i> sp1	Th	B.Moreira 271
Loranthaceae		
<i>Struthanthus concinnus</i> (Mart.) Mart.	Th	B.Moreira 333
<i>Struthanthus marginatus</i> (Desr.) Blume	Th	B.Moreira 033
Lythraceae		
<i>Cuphea thymoides</i> Cham & Schldl.	Sh	B.Moreira 237
Malpighiaceae		
<i>Byrsonima cuneifolia</i> Griseb.	Sh	B.Moreira 292
<i>Byrsonima variabilis</i> A.Juss.	Sh	B.Moreira 028
<i>Heteropterys pteropetala</i> A. Juss.	Sh	B.Moreira 094
<i>Mascagnia sepium</i> (A.Juss.) Griseb.	Li	B.Moreira 048
Malvaceae		
<i>Callianthe montana</i> (A. St.-Hil.) Donell & C. Takeuch	Sh	B.Moreira 253
<i>Abutilon fluviatile</i> (Vell.) K.Schum.	Sh	B.Moreira 004
<i>Pavonia communis</i> A.St.-Hil.	Sh	B.Moreira 179
<i>Pavonia viscosa</i> A.St.-Hil.	Sh	B.Moreira 222
<i>Triumfetta semitriloba</i> Jacq.	Sh	B.Moreira 157
<i>Triumfetta</i> sp1	Sh	B.Moreira 153
<i>Triumfetta</i> sp2	Sh	B.Moreira 269
Melastomataceae		
<i>Leandra aurea</i> (Cham.) Cogn.	Tr	B.Moreira 141
<i>Leandra carassana</i> (DC.) Cogn.	Tr	B.Moreira 082
<i>Leandra foveolata</i> (DC.) Cogn.	Sh	B.Moreira 054
<i>Leandra fragilis</i> Cogn	Tr	B.Moreira 315
<i>Leandra gardneriana</i> Cogn.	Sh	B.Moreira 131
<i>Leandra melastomoides</i> Raddi	Tr	B.Moreira 118
<i>Leandra pennipilis</i> (Triana) Cogn.	Tr	B. Moreira 75
<i>Leandra riedeliana</i> (O.Berg ex Triana) Cogn.	Sh	B.Moreira 258
<i>Leandra vesiculosa</i> Cogn.	Tr	B.Moreira 201
<i>Miconia chartacea</i> Triana	Tr	B.Moreira 084
<i>Miconia cinnamomifolia</i> (DC.) Naudin	Tr	Fontes 150
<i>Miconia corallina</i> Spring	Tr	B.Moreira 074
<i>Miconia latecrenata</i> (DC.) Naudin	Tr	B.Moreira 013
<i>Miconia pusilliflora</i> (DC.) Naudin	Tr	B.Moreira 225
<i>Miconia sellowiana</i> Naudin	Tr	B.Moreira 053

Continued Table 1.

Family/Species	Habit	Voucher
<i>Miconia theizans</i> (Bonpl.) Cogn.	Tr	B.Moreira 142
<i>Pleroma collina</i> (Naudin) Triana	Sh	B.Moreira 079
<i>Pleroma heteromalla</i> D. Don (D.Don)	Sh	B.Moreira 347
<i>Pleroma semidecandra</i> (Schränk et Mart. ex DC.) Triana	Sh	B.Moreira 235
<i>Tibouchina estrellensis</i> (Raddi) Cogn.	Sh	B.Moreira 172
<i>Trembleya parviflora</i> (D.Don) Cogn.	Tr	B. Moreira 239
Meliaceae		
<i>Cabralea canjerana</i> (Vell.) Mart.	Tr	B.Moreira 019
<i>Trichilia emarginata</i> (Turcz.) C. DC.	Tr	Fontes 100
Monimiaceae		
<i>Mollinedia clavigera</i> Tul.	Tr	B.Moreira 099
Moraceae		
<i>Ficus mexiae</i> Standl.	Tr	B.Moreira 182
Myrtaceae		
<i>Calyptanthes</i> sp1	Tr	B.Moreira 149
<i>Eugenia puniceifolia</i> (Kunth) DC.	Tr	B. Moreira 369
<i>Eugenia blastantha</i> (O.Berg) D.Legrand	Tr	B.Moreira 044
<i>Eugenia brasiliensis</i> Lam.	Tr	B.Moreira 047
<i>Eugenia cerasiflora</i> Miq.	Tr	B.Moreira 245
<i>Eugenia</i> sp1	Tr	B.Moreira 301
<i>Marlierea angustifolia</i> (O.Berg) Mattos	Tr	B.Moreira 261
<i>Myrceugenia</i> sp1	Tr	B.Moreira 357
<i>Myrcia eriopus</i> DC.	Sh	B.Moreira 326
<i>Myrcia hartwegiana</i> (O.Berg) Kiaersk.	Tr	B.Moreira 115
<i>Myrcia hebetata</i> DC.	Tr	Fontes 162
<i>Myrcia splendens</i> (Sw.) DC.	Tr	B.Moreira 017
<i>Myrcia venulosa</i> DC.	Tr	Fontes 152
<i>Myrcia</i> sp1	Tr	B.Moreira 351
<i>Myrciaria floribunda</i> (H.West ex Willd.) O.Berg	Tr	B.Moreira 130
<i>Siphoneugena crassifolia</i> (DC.) Proença & Sobral	Tr	B.Moreira 055
Nyctaginaceae		
<i>Guapira graciliflora</i> (Mart. ex Schmidt) Lundell	Tr	B.Moreira 057
<i>Guapira opposita</i> (Vell.) Reitz	Tr	B.Moreira 378
Ochnaceae		
<i>Ouratea semiserrata</i> (Mart. & Nees) Engl.	Sh	B.Moreira 020
<i>Sauvagesia vellosii</i> (Vell. ex A.St.-Hil.) Sastre	Sh	B.Moreira 024
Onagraceae		
<i>Fuchsia regia</i> (Vell.) Munz	Li	B.Moreira 021
Orchidaceae		
<i>Acianthera heliconiscapa</i> (Hoehne) F.Barros	Eh	Souza s.n. (BHCB 9833)
<i>Anathalis liparanges</i> (Rehb.f.) Luer	Eh	B.Moreira208
<i>Anathalis rubens</i> (Lindl.) Pridgeon & M.W.Chase	Eh	B.Moreira 134
<i>Bifrenaria aureofulva</i> (Hook.) Lindl.	Eh	B.Moreira 171
<i>Bifrenaria stefanae</i> V.P. Castro	Eh	B.Moreira 194
<i>Bifrenaria vitellina</i> (Lindl.) Lindl.	Eh	B.Moreira 069

Continued Table 1.

Family/Species	Habit	Voucher
<i>Brasiliorchis picta</i> (Hook.) R.B. Singer et.al.	Eh	B.Moreira 302
<i>Bulbophyllum exaltatum</i> Lindl.	Th	D.Sucre 6839
<i>Bulbophyllum glutinosum</i> (Barb.Rodr.) Cogn.	Eh	L.Menini Neto 125
<i>Bulbophyllum granulatum</i> Barb.Rodr.	Eh	L.Menini Neto 107
<i>Bulbophyllum micropetaliforme</i> J.E.Leite	Eh	Souza s.n. (BHCB 9834)
<i>Bulbophyllum regnellii</i> Rchb.f.	Eh	L.Menini Neto 124
<i>Campylocentrum neglectum</i> (Rchb.f. & Warm.) Cogn.	Eh	L.Menini Neto 28
<i>Campylocentrum robustum</i> Cogn.	Eh	L.Menini Neto 93
<i>Cattleya bicolor</i> Lindl.	Eh	L.Menini Neto 178
<i>Centroglossa macroceras</i> Rchb.f.	Eh	R.C.Forzza 59
<i>Cranichis candida</i> (Barb.Rodr.) Cogn.	Th	Souza s.n. (BHCB 1620)
<i>Dichaea cogniauxiana</i> Schltr.	Th	L.Menini Neto 142
<i>Encyclia patens</i> Hook.	Eh	B.Moreira 296
<i>Epidendrum armeniacum</i> Lindl.	Eh	L.Menini Neto 175
<i>Epidendrum chlorinum</i> Barb.Rodr.	Eh	L.Menini Neto 171
<i>Epidendrum difforme</i> Jacq.	Eh	L.Menini Neto 97
<i>Epidendrum martinianum</i> Lindl.	Th	B.Moreira 349
<i>Epidendrum ochrochlorum</i> Barb.Rodr.	Eh	B.Moreira 061
<i>Epidendrum paranaense</i> Barb. Rodr.	Th	B.Moreira 380
<i>Epidendrum ramosum</i> Jacq.	Th	R.C.Forzza 16
<i>Epidendrum rigidum</i> Jacq.	Th	L.Menini Neto 71
<i>Epidendrum secundum</i> Jacq.	Th	B.Moreira 066
<i>Eurystyles actinosophila</i> (Barb.Rodr.) Schltr.	Eh	S.G.Furtado 326
<i>Eurystyles cogniauxii</i> (Kraenzl.) Pabst	Eh	L.Menini Neto 77
<i>Gomesa glaziovii</i> Cogn.	Eh	L.Menini Neto 76
<i>Gomesa gomezoides</i> (Barb.Rodr.) Pabst.	Eh	B.Moreira 146
<i>Gomesa recurva</i> Lodd.	Eh	B.Moreira 264
<i>Grobya amherstiae</i> Lindl.	Eh	R.C.Forzza 26
<i>Habenaria rolfeana</i> Schltr.	Eh	B.Moreira 200
<i>Hadrolaelia coccinea</i> (Lindl.) Chiron & V.P.Castro	Eh	B.Moreira 214
<i>Isabelia violacea</i> (Lindl.) van den Berg & M.W.Chase	Eh	B.Moreira 318
<i>Isabelia virginalis</i> Barb.Rodr.	Eh	L.Menini Neto 47
<i>Isochilus linearis</i> (Jacq.) R.Br	Eh	L.Menini Neto 44
<i>Lankesterella gnoma</i> (Kraenzl.) Hoehne	Eh	L.Menini Neto 139
<i>Malaxis excavata</i> (Lindl.) Kuntze	Th	L.Menini Neto 72
<i>Masdevallia infracta</i> Lindl.	Eh	R.C.Forzza 4315
<i>Maxillaria acicularis</i> Herb. ex Lindl.	Eh	L.Menini Neto 86
<i>Maxillaria brasiliensis</i> Brieger & Illg	Th	L.Menini Neto 88
<i>Maxillaria notylioglossa</i> Rchb.f.	Eh	L.Menini Neto 119
<i>Maxillaria ochroleuca</i> Lodd. ex Lindl.	Eh	L.Menini Neto 87
<i>Maxillaria picta</i> Hook.	Th	R.C.Forzza 92
<i>Mesadenella cuspidata</i> (Lindl.) Garay	Th	L.Menini Neto 179
<i>Octomeria crassifolia</i> Lindl.	Th	L.Menini Neto 138
<i>Octomeria diaphana</i> Lindl.	Eh	L.Menini Neto 111
<i>Octomeria grandiflora</i> Lindl.	Eh	S.G.Furtado 300

Continued Table 1.

Family/Species	Habit	Voucher
<i>Octomeria rubrifolia</i> Barb.Rodr.	Th	L.Menini Neto 40
<i>Octomeria wawrae</i> Rchb.f.	Eh	L.Menini Neto 168
<i>Oncidium gravesianum</i> Rolfe	Th	L.Menini Neto 112
<i>Oncidium hookeri</i> Rolfe	Eh	B.Moreira 135
<i>Oncidium longipes</i> Lindl.	Th	L.Menini Neto 163
<i>Oncidium truncatum</i> Pabst	Eh	L.Menini Neto 95
<i>Oncidium warmingii</i> Rchb.f.	Th	B.Moreira 076
<i>Pleurothallis cryptophoranthoides</i> Loefgr.	Eh	L.Menini Neto 176
<i>Pleurothallis hypnicola</i> Lindl.	Eh	Assis 1054
<i>Pleurothallis luteola</i> Lindl.	Eh	L.Menini Neto 158
<i>Pleurothallis malachantha</i> Rchb.f.	Eh	L.Menini Neto 90
<i>Pleurothallis modestissima</i> Rchb.f. & Warm.	Eh	L.Menini Neto 51
<i>Pleurothallis recurva</i> Lindl.	Eh	L.Menini Neto 237
<i>Pleurothallis rubens</i> Lindl.	Th	L.Menini Neto 31
<i>Pleurothallis saundersiana</i> Rchb.f.	Eh	L.Menini Neto 37
<i>Pleurothallis tricarinata</i> Poepp. & Endl.	Eh	L.Menini Neto 118
<i>Polystachya estrellensis</i> Rchb.f.	Eh	L.Menini Neto 1348
<i>Polystachya hoehneana</i> Kraenzl.	Eh	L.Menini Neto 91
<i>Prescottia stachyodes</i> (Sw.) Lindl.	Th	B.Moreira 306
<i>Promenaea xanthina</i> (Lindl.) Lindl.	Eh	Eiterer s.n. (CESJ 25549)
<i>Prosthechea allemanoides</i> (Hoehne) W.E.Higgins	Eh	B.Moreira 014
<i>Prosthechea calamaria</i> (Lindl.) W.E.Higgins	Eh	L.Menini Neto 180
<i>Prosthechea pachysepala</i> (Klotzsch) Chiron & V.P.Castro	Th	B.Moreira 032
<i>Sacoila lanceolata</i> (Aubl.) Garay	Th	B.Moreira 366
<i>Scaphyglottis modesta</i> (Rchb.f.) Schltr.	Th	L.Menini Neto 52
<i>Stelis aprica</i> Lindl.	Eh	L.Menini Neto 127
<i>Stelis cf. caespitosa</i> Lindl.	Eh	B.Moreira 138
<i>Stelis megantha</i> Barb.Rodr.	Eh	R.C.Forzza 60
<i>Stelis papaquerensis</i> Rchb.f.	Eh	L.Menini Neto 157
<i>Stigmatosema polyaden</i> (Vell.) Garay	Eh	R.C.Forzza 58
<i>Thysanoglossa organensis</i> Brade	Eh	L.Menini Neto 89
<i>Trichosalpinx montana</i> (Barb.Rodr.) Luer	Eh	S.G.Furtado 283
<i>Zygopetalum mackayi</i> Hook.	Th	B.Moreira 199
Peraceae		
<i>Pera glabrata</i> (Schott) Poepp. ex Baill	Tr	Fontes 146
Piperaceae		
<i>Peperomia crinicaulis</i> C.DC.	Eh	S.G.Furtado 291
<i>Peperomia diaphanoides</i> Dahlst.	Eh	B.Moreira 213
<i>Peperomia galioides</i> Kunth	Th	B.Moreira 272
<i>Peperomia mandioccana</i> Miq.	Eh	S.G.Furtado 302
<i>Peperomia tetraphylla</i> (G.Forst.) Hook. & Arn.	Eh	L.Krieger 16238
Poaceae		
<i>Chusquea</i> sp1	Li	B.Moreira 108
<i>Ichnanthus adpressus</i> C. Silva & R.P. Oliveira	Th	B.Moreira 324
<i>Loudetiopsis chrysothrix</i> (Ness.) Conert	Th	B.Moreira 343

Continued Table 1.

Family/Species	Habit	Voucher
<i>Oplismenus hirtellus</i> (L.) P. Beauv.	Th	B.Moreira 221
<i>Setaria</i> sp1	Th	B.Moreira 154
Podocarpaceae		
<i>Podocarpus sellowii</i> Klotzsch	Tr	Fontes 064
Polygalaceae		
<i>Caamembeca oxyphylla</i> (DC.) J.F.B.Pastore	Sh	B.Moreira 006
<i>Polygala paniculata</i> L.	Th	B.Moreira 341
Primulaceae		
<i>Myrsine coriacea</i> (Sw.) R. Br. ex Roem. & Schult.	Tr	B.Moreira 035
<i>Myrsine ferruginea</i> (Ruiz & Pav.) Spreng.	Tr	B.Moreira 187
<i>Myrsine lancifolia</i> Mart.	Tr	Fontes 151
<i>Myrsine umbellata</i> Mart.	Tr	Fontes 127
Proteaceae		
<i>Roupala longepetiolata</i> Pohl	Tr	Fontes 138
<i>Roupala montana</i> Aubl.	Tr	B.Moreira 305
<i>Roupala rhombifolia</i> Mart.	Tr	Fontes 164
Rhamnaceae		
<i>Rhamnus sphaerosperma</i> Sw.	Tr	B.Moreira 096
Rubiaceae		
<i>Amaioua intermedia</i> Mart. ex Schult. & Schult.f.	Sh	B.Moreira 191
<i>Borreria capitata</i> (Ruiz & Pav.) DC.	Th	B.Moreira 224
<i>Borreria</i> sp1	Th	B.Moreira 313
<i>Coccocypselum condalia</i> (Ruiz & Pav.) Pers.	Th	B.Moreira 022
<i>Coccocypselum erythrocephalum</i> Cham. & Schltdl.	Th	B.Moreira 043
<i>Coccocypselum lanceolatum</i> (Ruiz & Pav.) Pers.	Th	B.Moreira 151
<i>Cordia concolor</i> (Cham.) Kuntze	Sh	B.Moreira 086
<i>Cordia elliptica</i> (Cham.) Kuntze	Sh	Fontes 110
<i>Hillia parasitica</i> Jacq.	Tr	B.Moreira 114
<i>Hindsia ibitipocensis</i> Di Maio	Sh	B.Moreira 064
<i>Palicourea marcgravii</i> A.St.-Hil.	Sh	B.Moreira 119
<i>Posoqueria acutifolia</i> Mart.	Tr	B.Moreira 178
<i>Psychotria leiocarpa</i> Cham. & Schltdl.	Sh	B.Moreira 273
<i>Psychotria ruelliifolia</i> (Cham. & Schltdl.) Müll.Arg.	Sh	B.Moreira 316
<i>Psychotria stachyoides</i> Benth.	Sh	B.Moreira 029
<i>Psychotria vellosiana</i> Benth.	Tr	B.Moreira 025
<i>Rudgea sessilis</i> (Vell.) Müll.Arg.	Tr	Fontes 055
Rutaceae		
<i>Dictyoloma vandellianum</i> A. Juss.	Tr	Fontes 024
<i>Esenbeckia grandiflora</i> Mart.	Sh	B.Moreira 297
<i>Zanthoxylum rhoifolium</i> Lam.	Tr	Fontes 154
Sabiaceae		
<i>Meliosma sellowii</i> Urb.	Tr	Fontes 166
Santalaceae		
<i>Phoradendron</i> sp1	Th	B.Moreira 128
<i>Phoradendron</i> sp2	Th	B.Moreira 353

Continued Table 1.

Family/Species	Habit	Voucher
Sapindaceae		
<i>Cupania vernalis</i> Cambess.	Tr	B.Moreira 018
<i>Cupania zanthoxyloides</i> Cambess.	Tr	B.Moreira 268
<i>Matayba cristae</i> Reitz	Tr	Fontes 167
<i>Matayba guianensis</i> (Aubl.) Radlk.	Tr	B.Moreira 008
<i>Matayba marginata</i> Radlk.	Tr	B.Moreira 009
Sapindaceae sp1	Tr	B.Moreira 105
Smilacaceae		
<i>Smilax elastica</i> Griseb.	Li	B.Moreira 217
<i>Smilax staminea</i> Griseb.	Li	B.Moreira 379
<i>Smilax stenophylla</i> A.DC.	Li	B.Moreira 359
<i>Smilax</i> sp1	Li	B.Moreira 259
Solanaceae		
<i>Aureliana velutina</i> Sendtn.	Tr	B.Moreira 085
<i>Brunfelsia brasiliensis</i> (Spreng.) L.B.Sm. & Downs	Sh	B.Moreira 110
<i>Dysochroma viridiflorum</i> (Sims) Miers	Sh	B.Moreira 274
<i>Solanum americanum</i> Mill.	Th	B.Moreira 250
<i>Solanum didymum</i> Dunal	Sh	B.Moreira 254
<i>Solanum kriegei</i> Giacomini & Stehmann	Th	B.Moreira 063
<i>Solanum mauritianum</i> Scop.	Tr	B.Moreira 278
<i>Solanum swartzianum</i> Roem. & Schult.	Tr	B.Moreira 180
<i>Solanum</i> sp1	Sh	B.Moreira 090
Solanaceae sp1	Sh	B.Moreira 085
Solanaceae sp2	Tr	B.Moreira 098
Symplocaceae		
<i>Symplocos celastrina</i> Mart.	Tr	B.Moreira 248
Theaceae		
<i>Laplacea fruticosa</i> (Schrad.) Kobuski	Sh	B.Moreira 023
Urticaceae		
<i>Cecropia glaziovii</i> Snehthl.	Tr	B.Moreira 311
Verbenaceae		
<i>Lantana fucata</i> Lindl.	Sh	B.Moreira 169
<i>Verbena litoralis</i> Kunth	Th	B.Moreira 080
Violaceae		
<i>Anchietea pyrifolia</i> (Mart.) G.Don	Li	B.Moreira 073
Vochysiaceae		
<i>Qualea cordata</i> (Mart.) Spreng.	Tr	B.Moreira 095
<i>Vochysia tucanorum</i> Mart.	Tr	B.Moreira 133
Winteraceae		
<i>Drimys brasiliensis</i> Miers	Tr	B.Moreira 329

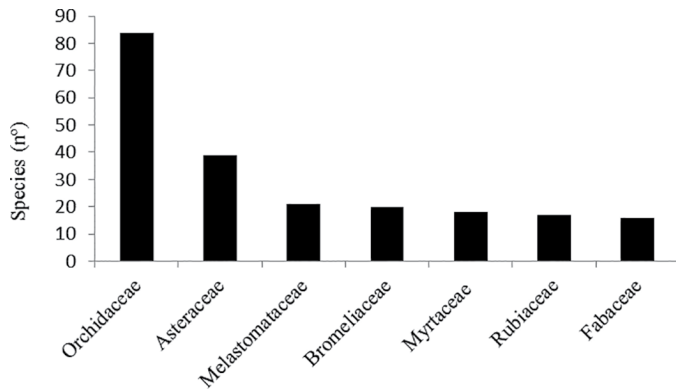


Figure 3. Most representative families in the cloud dwarf forests of the State Park of Ibitipoca, Serra da Mantiqueira, Brazil.

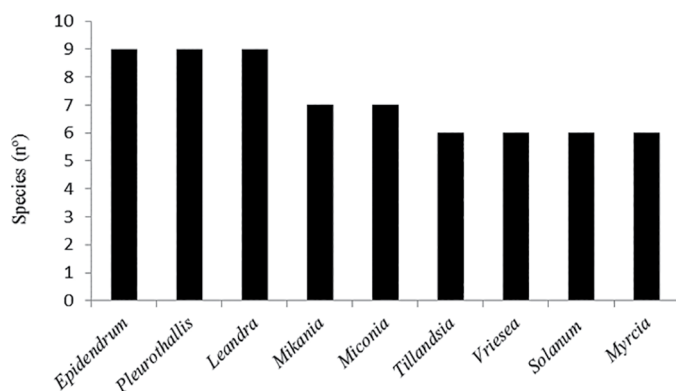


Figure 4. Most representative genera in the cloud dwarf forests of the State Park of Ibitipoca, Serra da Mantiqueira, Brazil.

The tree species are represented mainly by the families Melastomataceae and Myrtaceae. This floristic pattern meets the standards obtained by Oliveira-Filho & Fontes (2000), Santiago et al. (2018), and Eisenlohr & Oliveira-Filho (2015), who found Myrtaceae and Melastomataceae as the richest families in tree species for the Atlantic Forest in other regions of high altitude. These families also are found with high species richness in the survey carried out by Pereira et al. (2006) in remnants of vegetation in the Serra do Itatiaia. The families Myrtaceae and Melastomataceae are also considered Neotropical cloud forest characteristics by Webster (1995) and Scheer & Mocoichinski (2009).

In the cloud dwarf forests of ISP, indicative genera of highland forests in the Neotropical Region and in Brazil include *Clethra*, *Drimys*, *Roupala*, *Weinmannia*, *Podocarpus*, and *Myrceugenia* (França & Stehmann 2004, Meireles et al. 2008). The cloud dwarf forests have a floristic composition distinct from the seasonal forests located in lower altitudes, being common to observe endemic species and several of them belonging to genera frequently observed in cloud forests all over the globe, being highlighted genera of high wealth in Andean mountain formations (Hamilton et al. 1995), such as *Clethra* and *Rhamnus*, genera shared between the ISP dwarf forests and the Andean tropical montane forests. Our results are closely related to Bertonecello et al. (2011) phytogeographic analysis, that find *Drimys brasiliensis*, *Rhamnus sphaerosperma* and *Weinmannia paullinifolia* as preferential or indicator tree species in the cloud forests group compared to other forest subtypes in south and southeast Brazil.

The Asteraceae, Rubiaceae, and Melastomataceae families were noted for their richness in the shrub strata of the cloud dwarf forests. The high Asteraceae richness probably is associated to its diversity of habits, with species occupying different strata of the vegetation. In cloud forests located in regions of altitude in the South Region of Brazil, Asteraceae also presents high representativeness, although in Brazil, it presents greater richness in regions of rupestrian fields (Falkenberg 2003, Borges et al. 2010). Melastomataceae and Rubiaceae were also highlighted in studies in the Serra da Mantiqueira and Serra Negra (MG), due to the high richness of the shrub taxa (Salimena et al. 2013, Meireles et al. 2014). The genera *Baccharis*, *Psychotria*, *Leandra*, and *Pleroma* (three species each) were the most representative among the shrubs. These data are in agreement with Mocoichinski & Scheer (2008) and Meireles et al. (2014), who found *Leandra* and *Pleroma* as shrub genera with high richness and a representative number of endemic species in high montane formations.

Terrestrial herbs are the main components of the ISP cloud dwarf forests' sub-forest, especially in humid and shady places, and are mainly represented by species of the Asteraceae and Orchidaceae families, understory plants of the genera *Coccocypselum* and *Anthurium*, as well as species of the family *Commelinaceae*, such as *Dichorisandra hexandra* and *Commelina obliqua*. The herbaceous earth species contribute to the floristic increase of forest areas and to the composition of the soil, because they have a shorter life cycle than species of arboreal habit (Martins-Ramos et al. 2011). In the present study, the terrestrial herbs correspond to about 21.5% of the total species, a value close to that obtained for the shrub species (22.3%). Pereira-Silva et al. (2007), Meireles et al. (2014), and Santiago et al. (2018), in studies carried out in different regions of the Serra da Mantiqueira, recorded Asteraceae as the family with the highest species richness. The high richness of this family in the terrestrial herbaceous stratum can be related to the direct contact of the cloud dwarf forests with the adjacent altitude fields, which facilitates the establishment of Asteraceae species in these areas (Pillar et al. 2009). The family is one of the most diverse in global terms and can be found in all types of habitats around the world (Judd et al. 2009).

Among the lianas, the *Chusquea* and *Mikania* genera are well distributed throughout the study area. Bamboos of the genus *Chusquea* are frequent in the cloud dwarf forests of ISP and generally form clusters near the areas of greater humidity, bordering the rivers and streams. *Chusquea* and *Mikania* occur preferentially in Atlantic South Atlantic formations (Safford 2007, Meireles et al. 2014).

The cloud dwarf forests have a high epiphytic rate, especially the families Orchidaceae and Bromeliaceae, which occupy diverse forest strata and collaborate for the high index of epiphytic species in a forest formation, besides the abundant presence of lichens that occupy the trunks of the trees, shrubs, and soil (Furtado 2016). In the present study, a high rate of epiphytic species was observed (22% of the species sampled). These species can often be considered typical of cloud forests and may correspond to about 25% of the species sampled (Benzing 1998). Furtado (2016) has compiled a list of vascular epiphytes occurring in the cloud forests of ISP, composed of 222 species distributed in 81 genera and 22 families, of which Orchidaceae is the richest (85 spp.), corresponding to 28% of the vascular flora formation. Both the absolute number of species and the epiphytic quotient observed by Furtado (2016) correspond to one of the greatest diversities already sampled in studies of this nature in the Brazilian Atlantic Forest.

Table 2. Phytogeographic groups of the genera represented in cloud dwarf forests of Ibitipoca State Park, Serra da Mantiqueira, Southeastern Brazil.

Phytogeographic groups	Genera (n°)
Temperate	
Austral-antartic: <i>Drimys, Fuchsia, Griselinia, Myrceugenia, Podocarpus, Polygala, Weinmannia</i>	7
Holarctic: <i>Rhamnus</i>	1
Large temperate: <i>Senecio, Dendrophorbium</i>	2
Cosmopolitan: <i>Bidens, Borreria, Brickellia, Caamembeca, Cerastium, Commelina, Crepis, Ficus, Galactia, Ilex, Ipomoea, Malaxis, Oplismenus, Rhynchospora, Solanum, Setaria, Taraxacum, Verbesina</i>	18
Tropical	
Endemic of Brazil: <i>Eremanthus, Grobya, Nematanthus, Trembleya, Aosa, Dyssochroma, Gomesa, Periandra, Vanhouttea, Wittrockia.</i>	10
Neotropical: <i>Acianthera, Aechmea, Alchornea, Alstroemeria, Amaioua, Anathallis, Ancistrotropis, Anchieta, Anetanthus, Anthurium, Aspidosperma, Aureliana, Austrocritonia, Baccharis, Bifrenaria, Billbergia, Brasiliorchis, Brunfelsia, Byrsonima, Cabralea, Calolisianthus, Calyptanthus, Campylocentrum, Cattleya, Cecropia, Centroglossa, Centrosema, Chaptalia, Chromolaena, Chusquea, Coccocypselum, Clusia, Cordiera, Cranichis, Cupania, Cuphea, Dichaea, Dichorisandra, Dictyoloma, Ditassa, Emmeorrhiza, Encyclia, Epidendrum, Eriope, Eupatorium, Eurystyles, Forsteronia, Fridericia, Geonoma, Gomidesia, Guapira, Guatteria, Hadrolaelia, Handroanthus, Hattoria, Hedyosmum, Heteropterys, Hillia, Hindsia, Hyptidendron, Ichnanthus, Isabelia, Isochilus, Lamanonia, Langsdorffia, Lankesterella, Laplacea, Leandra, Leptostelma, Lessingianthus, Loudetiopsis, Machaerium, Mandevilla, Marlierea, Mascagnia, Matayba, Masdevallia, Maxillaria, Mesadenella, Mesosphaerum, Miconia, Mollinedia, Myrcia, Myrciaria, Nectandra, Neoregelia, Nidularium, Octomeria, Oncidium, Oxypetalum, Palicourea, Pera, Phoradendron, Piper, Philodendron, Pleroma, Pleurothallis, Posoqueria, Praxelis, Prescottia, Promenaea, Prosthechea, Qualea, Roupala, Scaphyglottis, Schlumbergera, Siphoneugena, Sinningia, Stelis, Stigmatosema, Struthanthus, Thysanoglossa, Tibouchina, Tillandsia, Tovomitopsis, Trichogonia, Trichosalpinx, Tridax, Trixis, Verbena, Vernonanthura, Vismia, Vochysia, Vriesea, Wilbrandia, Zygopetalum.</i>	126
Large tropical: <i>Abutilon, Achyrocline, Agarista, Ageratum, Alternanthera, Andropogon, Aspilia, Begonia, Bulbophyllum, Chamaecrista, Clethra, Cordia, Erythroxylum, Eugenia, Gochnatia, Habenaria, Hyptis, Justicia, Lantana, Meliosma, Mendoncia, Mikania, Mimosa, Myrsine, Ocotea, Ouratea, Paepalanthus, Pavonia, Peperomia, Polystachya, Psychotria, Rhipsalis, Rudgea, Sacoila, Sauvagesia, Schefflera, Scleria, Senna, Smilax, Symplocos, Trichilia, Tripogandra, Triumphetta, Vitex, Zanthoxylum.</i>	45

In view of the above, it is possible to assume that the epiphytes play an important role in the cycles of the cloud dwarf forests. They also act in the local water cycle, since they interfere in the capture, storage, and slow release of water (Richardson et al. 2000). It is estimated that in some areas epiphytes can store about 3,000 liters/ha and provide water, nesting, and feeding materials for a wide range of animal species, from invertebrates to primates (Richardson et al. 2000). These factors alone justify the importance of the presence of epiphytes for the ecosystem as a whole.

The floristic profile of the ISP cloud dwarf forests presents floristic similarities at the family and genera levels with the Andes highland forests, also presenting characteristics that allow them to be associated with a transition environment between the rupestrian and highland Southeast Region of Brazil. Based on the predominance of the families Orchidaceae, Asteraceae, Bromeliaceae, Myrtaceae, Melastomataceae, and Rubiaceae, it can be affirmed that the cloud dwarf forests of ISP present very similar flora to the cloud dwarf forests of Serra Fina, Serra Negra (MG), and Agulhas Negras (RJ) (Oliveira-Filho & Fontes 2000, Oliveira-Filho et al. 2005, Pereira et al. 2006, Bertonecello et al. 2011, Valente et al. 2011, Meireles et al. 2014).

Fontes (1997), in a study in the PEIB cloud forest, which he called “Mata Alta” (cloud forest), found Lauraceae as the richest family, followed by Myrtaceae and Rubiaceae. The author points out that this area differs substantially from the areas of cloud dwarf forests, which he called “Mata Baixa” (cloud dwarf forest), mainly in relation to the forest structure. Fontes (1997) recorded 127 species in the “Mata Alta”, 63 in

the “Mata Baixa” and only eight species common to the two habitats, indicating that they are two forest physiognomy very distinct. Menino (2013), in a study performed in the same sample area as Fontes (1997), found *Psychotria suterella*, *Aspidosperma australe* and *Psychotria vellosiana* as the species of high VI. Among these, only *Psychotria vellosiana* was sampled in the cloud dwarf forests, reinforcing the heterogeneity among the forest physiognomies. PEIB cloud forests are characterized by canopy rich in clearings, with a height of around 17 m, with emergent trees reaching 30 m, while the cloud dwarf forests have a canopy of about 10 m, with few emergent trees, reaching up to 16 m (Oliveira-Filho et al., 2013).

In general, the richness of the plant community of the cloud dwarf forests of ISP reinforces its importance for local, demonstrating that relatively small areas are also relevant for preservation and that even conservation units should improve strategies for maintaining biodiversity (Drummond et al. 2005).

2. Phytogeography

The studies that seek to understand the geographic distribution of the species present in the cloud dwarf forests are of fundamental importance, since they allow to subsidize strategies of conservation and environmental restoration, and help in the prediction of the impacts of future climate changes on the natural vegetation. In this study, we classified the genera in seven phytogeographic groups delimited based on their current centers of diversity cited in Safford (2007). Among the Austral-Antarctic genera, *Drimys*, *Fuchsia*, *Polygala*, and *Weinmannia*

have few Atlantic representatives, whereas *Myrceugenia* is richer to the east of Brazil, with species indicative of the high montane forests under cold and humid climates (Meireles et al. 2008). These genera were part of a past flora dispersed among Australia, Antarctica, and South America (Brade 1956).

As representative of the Holarctic floristic element, only the genus *Rhamnus* was found in the cloud dwarf forests of ISP. The presence of Holarctic elements in the Neotropical flora has been associated with the proximity between North and South America during the Cretaceous, continental, and volcanic island arches in the Central American region, long-distance dispersal events during the Cenozoic, and the formation of the Isthmus of Panama and elevation of the northern Andes between the Miocene and the Pliocene, about 3.5 million years ago. According to Brade (1956), the Holarctic element went from North America to South America using the mountain chain of the Andes as a migration bridge and later advanced to the east of the continent towards Serra da Mantiqueira and Serra do Mar.

According to Safford (2007), the flora of the Andes and the highest points of the Brazilian mountain ranges form a group of species tropical, temperate, and cosmopolitan origin that have developed in these places through long periods of environmental changes and migrations. Safford (2007) reports that during the drought periods of the Tertiary, the Atlantic mountain ranges served as a refuge for species adapted to cold and humidity, especially the Austral-Antarctic taxa, and that during long periods of colder weather a greater contact occurred between the plant formations of east and west of South America, thus favoring colonization of the tropical Atlantic forests by Andean elements. This contact may have occurred several times, and the Atlantic rainforests may have been an important source for the colonization of the new mountainous environments developed late in the northern Andes (Safford 2007).

In ISP, the temperate floristic component is represented by the genera *Senecio* and *Dendrophorbium*, whereas the cosmopolitan elements are represented by the genera *Bidens*, *Borreria*, *Brickellia*, *Caamembeca*, *Cerastium*, *Commelina*, *Crepis*, *Ficus*, *Galactia*, *Ilex*, *Ipomoea*, *Malaxis*, *Oplismenus*, *Rhynchospora*, *Solanum*, *Setaria*, *Taraxacum*, and *Verbesina*. Temperate taxa, mainly Holarctic, are much more representative in the Andean flora than in the Brazilian mountains, due to a series of geographic and historical factors, lower altitudes, and the more limited area of the mountains in Brazil. Safford (2007) suggests that many temperate and cosmopolitan species first arrived in Southern Brazil by migrating through favorable habitats, rather than dispersing over long distances.

Among the ten endemic genera of Brazil, the family Gesneriaceae, represented by the *Nematanthus* and *Vanhouttea*, stands out. The genera *Nematanthus* is endemic in South and Southeast of Brazil, except for one species that reaches the south of Bahia (Chautems 1988). *Vanhouttea* has species distributed in the states of Espírito Santo, Minas Gerais and Rio de Janeiro (Chautems 2002). The other endemic genera are *Eremanthus*, *Trembleya*, *Aosa*, *Dyssochroa*, *Gomesa* (sensu stricto), *Grobya*, *Periandra* and *Wittrockia*, which present very common species in high altitude vegetation formations in the Atlantic Forest. Among these, *Eremanthus*, *Periandra* and *Trembleya*, present a greater richness in *campos rupestres*, with some species present in altitude fields and inside the cloud dwarf forestes (Giulietti & Pirani 1988).

About 60% of the genera found are Neotropical, and among them, *Cabralea*, *Leandra*, *Miconia*, *Mollinedia*, *Myrcia*, *Myrciaria*, *Roupala*,

Siphoneugena, *Pleroma*, and *Vernonanthura* can present species of montane forests that tolerate adverse altitude conditions (Oliveira-Filho & Fontes 2000, Meireles et al. 2014). Among the Neotropical genera, some are commonly found in the Andes mountains, such as *Baccharis* and *Chusquea*, besides being of great importance in the floristic composition of the montane vegetation of the Southeastern and Southern Region of Brazil (Brade 1956, Safford 1999, Meireles et al. 2014).

The *Hindsia* genus is richest in the mountains of eastern Brazil, and in this study the species *Hindsia ibitipocensis*, considered to be endangered, is recorded only for a small part of the Serra da Mantiqueira, represented by ISP. (Di Maio 1996, Oliveira et al. 2013). Broad tropical genera accounted for 24%, with predominance of the Asteraceae and Malvaceae families, in which attributes such as long dispersal distances, large fruit production, and seed dormancy are common, helping to increase their distributions (Lorenzi 2008).

Due to the historical process of land occupation, characterized mainly by the exploitation of timber species, forest fragmentation, and expansion of agricultural and livestock activities, the original forest areas of the Serra da Mantiqueira were drastically reduced (Almeida & Carneiro 1998, Drummond et al. 2005). In this way, conservation of the remaining forests is fundamental, since besides presenting high residual diversity, they perform environmental services, such as the sequestration of atmospheric carbon dioxide, soil protection, maintenance of the hydrological cycle, and protection of watercourses (Pounds et al. 1999). It is important to point out that the cloud dwarf forests contribute with additional water provision to the water systems, through the capture of condensed water in the clouds. Therefore, conservation of these forests will contribute to the continuous production of water in the springs, which will benefit the production of drinking water and water quality for future generations (Oliveira-Filho et al. 2004). Further studies on the biodiversity of cloud dwarf forests are needed to support the development of public policies aimed at protecting these areas, especially given their great fragility in the face of global climate change (IPCC 2014).

Acknowledgements

We thank the employees of Ibitipoca State Park for their constant support throughout the project. We are also thankful for the great help provided by the students of the Graduate Program in Ecology (PGECOL) and the Plant Ecology Laboratory of the Federal University of Juiz de Fora (UFJF), during field activities and herbarium routines. Thanks also go to the researchers who helped in the botanical identification and to the UFJF for the support in the excursions to the study area. This work was supported by the Conselho Nacional de Desenvolvimento Científico e Tecnológico (CNPq) under grant 454008/2014-7 and Fundação de Apoio a Pesquisa do Estado de Minas Gerais (FAPEMIG) under grant APQ 2165/14.

Author Contributions

Breno Moreira: responsible for conception, field work, data analysis, identification of specimens and the writing manuscript.

Fabício Alvim Carvalho: substantial contribution in analysis and interpretation of data and manuscript preparation.

Luiz Menini Neto: substantial contribution in analysis and interpretation of data and manuscript preparation.

Fátima Regina Gonçalves Salimena: responsible for conception and coordinated the study.

Conflicts of interest

The authors declare that they have no conflict of interest related to the publication of this manuscript.

References

- ALMEIDA, F.F.M. & CARNEIRO, C.D. 1998. Origem e evolução da Serra do Mar. *Revista Brasileira de Geociências* 28: 135-150.
- APG IV. 2016. An update of the Angiosperm Phylogeny Group classification for the orders and families of flowering plants: APG IV. *Botanical Journal of the Linnean Society* 181: 1–20.
- ARCOVA, F.C.S. 2013. Avaliação do potencial hidrológico dos nevoeiros e da precipitação oculta em ambiente de Floresta Ombrófila Densa Montana na Serra do Mar, Cunha, SP. Tese De doutorado, Universidade de São Paulo, São Paulo.
- BENZING, D.H. 1998. Vulnerabilities of tropical forests to climate change: the significance of resident epiphytes. *Climate Change* 39, pp. 519–5440
- BERTONCELLO, R., YAMAMOTO, K., MEIRELES, L.D. & SHEPHERD, G.J. 2011. A phytogeographic analysis of cloud forests and other forest subtypes amidst the Atlantic forests in south and southeast Brazil. *Biodiversity conservation* 20(14): 3413–3433.
- BFG. 2015. Growing knowledge: an overview of Seed Plant diversity in Brazil. *Rodriguésia* 66: 1085-1113.
- BORGES, R.X.A., SAAVEDRA, M.M., NAKAJIMA, J.N. & FORZZA, R.C. 2010. The Asteraceae flora of the Serra do Ibitipoca: analyses of its diversity and distribution compared with selected areas in Brazilian mountain ranges. *Systematics and Biodiversity* 8(4): 471-479.
- BRADÉ, A.C. 1956. A flora do Parque Nacional do Itatiaia. *Boletim Parque Nacional do Itatiaia* 5: 1-92.
- BROWN, J.H., STEVENS, G.C. & KAUFMAN, D.M. 1996. The geographic range: size, shape, boundaries, and internal structure. *Annals Review of Ecology and Systematics* 27: 597-623.
- BRUIJNZEEL, L.A., SCATENA, F.N. & HAMILTON, L.S. 2010. Tropical montane cloud forests: Science for conservation and management. Cambridge University Press, London, UK
- BUBB, P., MAY, I., MILES, L. & SAYER, J. 2004. Cloud forest agenda. Cambridge: PNUMA-CMVC, 32 p.
- CHAUTEMS, A. 1988. Revision taxonomique et possibilites d'hybridations de *Nematanthus Schrader* (Gesneriaceae), genre endémique de la forêt cotière brésilienne. *Dissertationes Botanicae* 112:1-226.
- CHAUTEMS, A. 2002. New Gesneriaceae from Minas Gerais, Brazil. *Candollea* 56: 261-270.
- CORRÊA NETO, A.V. & BAPTISTA FILHO, J. 1997. Espeleogênes em quartzitos da Serra do Ibitipoca, Sudeste de Minas Gerais. *Anuário do Instituto de Geociências, Rio de Janeiro*, v. 20, p. 75-87.
- COSTA, C. & HERRMANN, G. 2006. Plano de Ação do Corredor Ecológico da Mantiqueira. 1 ed. Valor Natural, 64p.
- CRIA. Centro de Referência em Informação Ambiental. 2001. SpeciesLink. Disponível em <<http://splink.cria.org.br/tools?criaLANG=pt>> (último acesso 01/10/2017).
- DIAS, H.C.T., FERNANDES FILHO, E.I., SCHAEFER, C.E.G.R., FONTES, L.E.F.F. & VENTORIM, L.B. 2002. Geoambientes do Parque Estadual do Ibitipoca, município de Lima Duarte-MG. *Revista Árvore* 26(6): 777-786.
- DI MAIO, F.R. 1996. Revisão taxonômica do gênero *Hindsia* Bentham (Rubiaceae, Hedyotideae). *Arquivos do Jardim Botânico do Rio de Janeiro* 34: 51-92.
- DRUMMOND, G.M., MARTINS, C.S., MACHADO, A.B.M., SEBAIO, F.A. & ANTONINI, Y. 2005. Biodiversidade em Minas Gerais, um atlas para sua conservação. Fundação Biodiversitas. Belo Horizonte.
- EISENLOHR, P.V. & OLIVEIRA-FILHO, A.T. 2015. Revisiting Patterns of Tree Species Composition and their Driving Forces in the Atlantic Forests of Southeastern Brazil. *Biotropica* 47: 689-701.
- FALKENBERG, D.B. 2003. Matinhas nebulares e vegetação rupícola dos Aparados da Serra Geral (SC/RS), sul do Brasil. Tese de doutorado. Universidade Estadual de Campinas, Campinas.
- FILGUEIRAS, T.S., NOGUEIRA, P.E., BROCHADO, A.L. & GUALA, G.F. 1994. Caminhamento: um método expedito para levantamentos florísticos qualitativos. *Cadernos de Geociências* 12: 39-43.
- FLORA DO BRASIL 2020. Em construção. Jardim Botânico do Rio de Janeiro. Disponível em: <<http://floradobrasil.jbrj.gov.br/>> (último acesso 10/10/2017).
- FONTES, M.A. 1997. Análise da composição florística das Florestas Nebulares do Parque Estadual do Ibitipoca, Minas Gerais. Dissertação de mestrado. Universidade Federal de Lavras, Lavras.
- FRANÇA, G.S. & STEHMANN, J.R. 2004. Composição florística e estrutura do componente arbóreo de uma floresta altimontana no município de Camanducaia, Minas Gerais, Brasil. *Revista Brasileira de Botânica* 27: 19-30.
- FURTADO, S.G. 2016. Ecologia de epífitas vasculares nas Florestas Nebulares do Parque Estadual do Ibitipoca, Minas Gerais, Brasil. Dissertação de mestrado, Universidade Federal de Juiz de Fora, Juiz de Fora.
- GIULIETTI, A.M. & PIRANI, J.R. 1988. Patterns of geographic distribution of some species from the Espinhaco Range, Minas Gerais and Bahia, Brasil. In *Proceedings of a Workshop on Neotropical Distribution Patterns* (P.E. Vanzolini & W.R. Heyer, eds.). Academia Brasileira de Ciências, Rio de Janeiro, p.39-69.
- GONÇALVES, E.G. & LORENZI, H. 2007. Morfologia vegetal: organografia e dicionário ilustrado de morfologia das plantas vasculares. São Paulo: Plantarum. 416p.
- GRYTNES, J.A. & MCCAIN, C.M. 2007. Elevational trends in biodiversity. *Encyclopedia of biodiversity*.
- HAMILTON, L.S., JUVIK, J.O. & SCATENA, F.N. 1995. The Puerto Rico tropical cloud forests symposium: introduction and workshop synthesis. In *Tropical montane cloud forests* (L. S. Hamilton, J. O. Juvik & F. N. Scatena, eds.). Springer-Verlag, New York, p.1-23.
- INTERGOVERNMENTAL PANEL ON CLIMATE CHANGE - IPCC 2014 Climate Change 2014: Impacts, Adaptation and Vulnerability (IPCC). Work Group 2. Geneva. 2014. IPCC 2014 Fifth Assessment Report. Disponível em: <<http://www.ipcc-wg2.gov/AR5/>> (último acesso 01/10/2017).
- JUDD, W.S., CAMPBELL, C.S., KELLOGG, E.A., STEVENS, P.F. & DONOGHUE, M. J. 2009. Sistemática Vegetal: Um enfoque filogenético. Porto Alegre: Artmed. 632p.
- KÖPPEN, W. 1948. Das geographische System der Klimate – handbuch der klimatologie. Vol. 1. Part C. Berlin: Gebr. Bornträger Verlag, 388 p.
- KÖRNER, C. 1999. Alpine Plant Life: functional plant ecology of high mountain ecosystems. Springer-Verlag, Berlin, Heidelberg.
- LORENZI, H. 2008. *Árvores brasileiras: manual de identificação e cultivo de plantas arbóreas nativas do Brasil*. 5.ed. Nova Odessa: Instituto Plantarum, v.1. 368p.
- MARTINELLI, G. 2007. Mountain biodiversity in Brazil. *Revista Brasileira de Botânica* 30(4): 587-597.
- MARTINELLI, G. & MORAES, M.A. 2013. Livro vermelho da flora do Brasil. Jardim Botânico do Rio de Janeiro. <http://cncflora.jbrj.gov.br> (último acesso 01/10/2017).
- MARTINS-RAMOS, D., CHAVES, C.L., BORTOLUZZI, R.L.C. & MANTOVANI, A. 2011. Florística de floresta ombrófila mista alto-montana e de campos em Urupema, Santa Catarina. Brasil. *Revista Brasileira de Biociências*. 9(2): 156–166.
- MBG. Missouri Botanical Garden. 2014. Tropicos.org. Disponível em <<http://www.biologie.uni-hamburg.de/b-online/ibc99/mobot/pick.html>> (último acesso 10/10/2017).

- MEIRELES, L.D., SHEPHERD, G.J. & KINOSHITA, L.S. 2008. Variações na composição florística e na estrutura fitossociológica de uma floresta ombrófila densa alto-montana na Serra da Mantiqueira, Monte Verde, MG. *Revista Brasileira de Botânica* 31: 559-574.
- MEIRELES, L.D., KINOSHITA, L.S. & SHEPHERD, G.J. 2014. Composição florística da vegetação altimontana do distrito de Monte Verde (Camanducaia, MG), Serra da Mantiqueira Meridional, Sudeste do Brasil. *Rodriguésia* 65: 831-859.
- MENINO, G.C.O. 2013. Dinâmica da comunidade arbórea de uma floresta nebulosa na Serra de Ibitipoca, Minas Gerais. Tese de Doutorado Universidade Federal de Lavras, Lavras.
- MOCOCHINSKI, A.Y. & SCHEER, M.B. 2008. Campos de altitude na Serra Paranaense: aspectos florísticos. *Floresta* 38: 625-640.
- MOREIRA, A.A.N. & CAMELIER, C. 1977. Relevô. In *Geografia do Brasil*. Fundação Instituto Brasileiro de Geografia e Estatística, Rio de Janeiro, v.3, p.1-150.
- MORI, S.A., SILVA, L.A.M., LISBOA, G. & CORADIN, L. 1989. Manual de manejo de herbário fanerogâmico. Ilhéus, BA: Centro de Pesquisas do Cacau.
- NUMMER, A.R. 1991. Mapeamento geológico e tectônico experimental do grupo Andrelândia na região de Santa Rita do Ibitipoca – Lima Duarte, Sul de Minas Gerais. Dissertação de Mestrado. Universidade Federal do Rio de Janeiro, Rio de Janeiro.
- OLIVEIRA, J.A., SALIMENA, R.F.G. & ZAPPI, D. 2014. Rubiaceae da Serra Negra, Minas Gerais, Brasil. *Rodriguésia* [online]. 65(2): 471-504.
- OLIVEIRA-FILHO, A.T. & FONTES, M.A.L. 2000. Patterns of floristic differentiation among Atlantic Forests in Southeastern Brazil and the influence of climate. *Biotropica* 32(4): 793-810.
- OLIVEIRA-FILHO, A.T., CARVALHO, D.A., FONTES, M.A.L., VAN DEN BERG, E., CURTI, N. & CARVALHO, W.A.C. 2004. Variações estruturais do compartimento arbóreo de uma floresta semidecídua alto-montana na chapada das Perdizes, Carrancas, MG. *Revista Brasileira de Botânica* 27(2): 291-309.
- OLIVEIRA-FILHO, A.T., JARENKOW, J.A. & RODAL, M.J.N. 2005. Floristic relationships of seasonally dry forests of eastern South America based on tree species distribution patterns. In: PENNINGTON, R. T. et al. (Ed.). *Neotropical savannas and dry forests: plant diversity, biogeography and conservation*. Boca Raton: CRC Press, p.151-184.
- OLIVEIRA-FILHO, A.T. 2009. Classificação das fitofisionomias da América do Sul cisandina tropical e subtropical: proposta de um novo sistema – prático e flexível – ou uma injeção a mais de caos. *Rodriguésia* 60: 237-258
- OLIVEIRA-FILHO, A.T., FONTES, M.A.L., VIANA, P.L., VALENTE, A.S.M., SALIMENA, R.F.G. & FERREIRA, F.M. 2013. O mosaico de fitofisionomias do Parque Estadual do Ibitipoca. In *Flora do Parque Estadual do Ibitipoca e seu entorno*. 1 ed. Juiz de Fora, 384p.
- PEREIRA-SILVA, E.F.L., HARDT, E. & FRANCISCO, C.E.S. 2007. Caracterização florística da vegetação lenhosa de um fragmento urbano de Floresta Ombrófila Mista Alto Montana, Campos do Jordão, SP. *Holos Environment* 7(2):154-170.
- PEREIRA, I.A., OLIVEIRA-FILHO, A.T., BOTELHO, S.A., CARVALHO, W.A.C., FONTES, M.A.L., SCHIAVINI, I. & SILVA, A.F. 2006. Composição florística do compartimento arbóreo de cinco remanescentes florestais do maciço do Itatiaia, Minas Gerais e Rio de Janeiro. *Rodriguésia* 57(1): 103-126.
- PILLAR, V.D., MÜLLER, S.C., CASTILHOS, Z. & JACQUES, A.V.A. (Orgs.). 2009. *Campos Sulinos: conservação e uso sustentável da biodiversidade*. Brasília: Ministério do Meio Ambiente. 403p.
- POMPEU, P.V., FONTES, M.A.L., SANTOS, R.M., GARCIA, P.O., BATISTA, T. A. & CARVALHO, W.A.C.; OLIVEIRA-FILHO, A.T. 2014. Floristic composition and structure of an upper montane cloud forest in the Serra da Mantiqueira Mountain Range of Brazil. *Acta Botanica Brasílica* 28:456-464.
- POUNDS, A., FOGDEN, M.P.L. & CAMPBELL J.H. 1999. Biological response to climate change on a tropical mountain. *Nature* 398:611–615.
- RAHBK, C. 2005. The role of spatial scale and the perception of large-scale species – richness patterns. *Ecology Letters* 8(2):224–239.
- RICHARDSON, B.A., RICHARDSON, M.J., SCATENA, F.N. & MCDOWELL W.H. 2000. Effects of nutrient availability and other elevational changes on bromeliad populations and their invertebrate communities in a humid tropical forest in Puerto Rico. *Tropical Ecology* 16: 167–188.
- RODELA, L. G. & TARIFA, J. R. 2002. Clima da Serra do Ibitipoca, sudeste de Minas Gerais. *Geosp: Espaço e Tempo* 11: 101-113.
- SAFFORD, H.D. 1999. Brazilian Páramos I. An introduction to the physical environment and vegetation of the campos de altitude. *Journal of Biogeography* 26(4): 693-712.
- SAFFORD, H.D. 2007. Brazilian Páramos IV. Phytogeography of the campos de altitude. *Journal of Biogeography* 34: 1701-1722.
- SALIMENA, F.R.G., MATOZINHOS, C.N., ABREU, N.L., RIBEIRO, J.H.C. SOUZA, F.S. & MENINI-NETO, L. 2013. Flora fanerogâmica da Serra Negra, Minas Gerais, Brasil. *Rodriguésia* 64(2): 311–320.
- SANTIAGO, D.S., OLIVEIRA-FILHO, A.T., MENINI NETO, L., CARVALHO, F.A. & SALIMENA, F.R.G. 2018. Floristic composition and phytogeography of an Araucaria Forest in the Serra da Mantiqueira, Minas Gerais, Brazil. *Rodriguésia* 69 (no prelo).
- SCHEER, M.B. & MOCOCHINSKI, A.Y. 2009. Florística vascular da Floresta Ombrófila Densa Altomontana de quatro serras no Paraná. *Biota Neotropica* 9(2):51-70.
- SLIK, J.W., SHIN-ICHIRO, A.S.I., BREARLEY, F.Q., CANNON, C.H., FORSHED, O. & KITAYAMA, K. 2010. Environmental correlates of tree biomass, basal area, wood specific gravity and stem density gradients in Borneo's tropical forests. *Global Ecology and Biogeography* 19:50–60.
- TEIXEIRA, W. & CORDANI, G. 2007. *Caminhos do Tempo Geológico In Itatiaia: Sentinela das Alturas* (W. Teixeira & R. Linsker, coords) Terra Virgem, São Paulo, p. 28-62.
- THIERS, B. 2016 [continuously updated]. In: *Index Herbariorum: A global directory of public herbaria and associated staff*. New York Botanical Garden's Virtual Herbarium.
- VALENTE, A.S.M., GARCIA, P.O., SALIMENA, R.F.G. & OLIVEIRA-FILHO, A.T. 2011. Composição, estrutura e similaridade florística da Floresta Atlântica, na Serra Negra, Rio Preto, Minas Gerais, Brasil. *Rodriguésia* 62(2): 321-340.
- VÁZQUEZ-GARCÍA, J.A. 1995. Cloud forest archipelagos: preservation of fragmented montane ecosystems in tropical America. Pp. 315–332 in L.S. Hamilton, J.O. Juvick, and F.N. Scatena, eds., *Tropical Montane Cloud Forest*. Ecological Studies, no. 110. Springer Verlag, New York.
- WEBSTER, G.L. 1995. The panorama of Neotropical Cloud Forests. In: Churchill, S. P.; Balslev, H.; Forero, E. & Luteyn, J. L. (eds.). *Biodiversity and Conservation of Neotropical Montane Forests: Proceedings of Neotropical Montane Forest Biodiversity and Conservation Symposium*. The New York Botanical Garden, New York. Pp. 53-77.

Received: 20/12/2017

Revised: 03/02/2018

Accepted: 16/03/2018

Published online: 16/04/2018