









# Contextual inequalities in specialized dental public health care in Brazil

Ana Luiza Cardoso PIRES<sup>(a)</sup>   
Francine dos Santos COSTA<sup>(b)</sup>   
Otávio Pereira D'ÁVILA<sup>(c)</sup>   
Rodrigo Varella de CARVALHO<sup>(d)</sup>   
Marcus Cristian Muniz CONDE<sup>(e)</sup>   
Marcos Britto CORREA<sup>(a)</sup>   
Flávio Fernando DEMARCO<sup>(a)</sup>   
Luiz Alexandre CHISINI<sup>(a)</sup> 

<sup>(a)</sup>Universidade Federal de Pelotas – UFPel, School of Dentistry, Department of Restorative Dentistry, Pelotas, RS, Brazil.

<sup>(b)</sup>Universidade Federal de Pelotas – UFPel, School of Dentistry, Pelotas, RS, Brazil.

<sup>(c)</sup>Universidade Federal de Pelotas – UFPel, School of Dentistry, Department of Social Dentistry, Pelotas, RS, Brazil.

<sup>(d)</sup>Universidade Federal de Juiz de Fora – UFJF, Department of Restorative Dentistry, Juiz de Fora, MG, Brazil.

<sup>(e)</sup>Universidade do Vale do Taquari–Univates, Center for Biological Sciences and Health, Department of Restorative Dentistry, Lajeado, RS, Brazil.

**Declaration of Interests:** The authors certify that they have no commercial or associative interest that represents a conflict of interest in connection with the manuscript.

**Corresponding Author:**  
Flávio Fernando Demarco  
E-mail: [ffdemarco@gmail.com](mailto:ffdemarco@gmail.com)

<https://doi.org/10.1590/1807-3107bor-2024.vol38.0023>

Submitted: August 25, 2022  
Accepted for publication: June 15, 2023  
Last revision: September 11, 2023

**Abstract:** The present study aimed to investigate the contextual inequalities of specialized public dental care (SPDC) in Brazil. The outcome was the trajectory of dental specialized production in municipalities with SPDC (from 2015 to 2017) obtained by group-based trajectory modeling. A Poisson regression model was used to analyze the factors associated with the high trajectory of SPDC production. The inequality indicators for SPDC production were the slope index and the concentration index according to contextual factors. The study included 954 SPDC units distributed across 893 municipalities. Among the municipalities evaluated, 62.9% had a low trajectory of SPDC. Large-sized municipalities had the highest production (IRR = 2.84, 95%CI: 1.94–4.14) and the southern region had the lowest production (IRR = 0.73, 95%CI: 0.58–0.92). Municipalities presenting a very high human development index (HDI) showed the greatest SPDC production (IRR = 3.34, 95%CI: 1.09–10.24), as well as municipalities with the highest tertile of schooling rate (IRR = 1.23, 95%CI: 1.00–1.50). The absolute inequality was 52.1 percentage points for the average monthly wage ( $p < 0.001$ ), 61.0 percentage points for the HDI ( $p < 0.001$ ), -22.1 for infant mortality rate ( $p < 0.001$ ), and 14.8 for the schooling rate ( $p = 0.012$ ). Thus, there are contextual inequalities in the Brazilian SPDC. Higher scores for social indicators were associated with better SPDC performance.

**Keywords:** Public Health; National Health Programs; Socioeconomic Factors; Dentistry.

## Introduction

The Brazilian society is widely marked by social<sup>1</sup> and racial<sup>2,3</sup> inequalities that affect the population's quality of life.<sup>4</sup> Such inequalities can affect the National Public Health System, *Sistema Único de Saúde* (SUS), which is the largest public health system in the world and is based on the principle that every citizen should have the right to health and that the federal government should provide universal access to health care. In Brazil, nearly 75% of the population has access to health care.<sup>5,6</sup> In dental care, health inequalities have always been historically observed.<sup>5</sup> The Family Health Strategy was created to rearrange the Primary Health Care (PHC) model in Brazil, including dentistry in the program from the 2000s onwards<sup>7</sup> through the National Oral Health Policy or “Smiling Brazil Program” (*Programa Brasil Sorridente*, in Portuguese).<sup>5</sup>



The strong expansion of oral health services in PHC was complemented by structuring a network of specialized public dental care (SPDC), boosting the Smiling Brazil Program, to offer comprehensive oral health care via the National Public Health System.<sup>5</sup> Thus, since 2006, access to the secondary care network through Dental Specialties Centers (DSC) has been expanded and implemented throughout the Brazilian territory.<sup>8,9</sup> DSCs are integrated into a complex care network, providing moderately complex procedures.<sup>5</sup>

The DSC implementations provided peripheral populations with wide coverage and access to SPDC.<sup>10,11</sup> However, there are persistent problems in oral health due to the reduced access and use of dental services, mainly in the poorest population,<sup>12</sup> causing further inequalities in oral health services. The relationship between a population's socioeconomic background and health status is well established in the literature: the social gradient in health and disease follows the socioeconomic level of the population, and the lower the position occupied in the social hierarchy, the worse the individuals' health status.<sup>13</sup>

Therefore, strategies for progressively expanding access to SPDC and directing public resources to programmatic targets are known to be associated with the reduction of health inequalities.<sup>10</sup> Besides, advances in epidemiological indicators have been observed as a result of the National Oral Health Policy actions.<sup>5</sup> However, these actions alone are not sufficient to solve oral health inequalities. Most of these inequalities arise from the different contexts that underlie the social determinants of health.<sup>13-16</sup> Therefore, actions involving ethnic-racial, behavioral, gender heterogeneity, and risk behavior issues need to be integrated into the existing ones.<sup>17</sup> National assessments of the factors influencing the delivery of public dental care by SUS are based mainly on primary care, with little attention to the analysis of inequalities.<sup>7,11,18</sup> Thus, the objective of the present study was to investigate contextual inequalities of SPDC in Brazil.

## Methodology

The present study was reported following the STROBE guidelines for observational studies.

## Study design

This is a retrospective longitudinal ecological study using secondary data from the SUS database (DATASUS; <http://www.datasus.gov.br>), from the National Register of Health Establishments (CNES; <http://cnes.datasus.gov.br/>), and the Brazilian Institute of Geography and Statistics (IBGE; <http://www.ibge.gov.br>). All data were extracted from open-access secondary databases in the public domain, eliminating the need for approval by the Research Ethics Committee. SPDC registered in the CNES and active throughout the period from January 2015 to December 2017 were included in the present study. The data were collected during the period from January to October 2020.

## Independent variables

The independent variables assessed in this study were population size of municipalities, the Human Development Index (HDI), coverage of PHC and PHC with the oral health team, average monthly income of the population, schooling rate (for ages 6 to 14 years), and infant mortality rate (IBGE; <https://cidades.ibge.gov.br/>). The absolute estimated population of each municipality was obtained through IBGE data, considering the projections for the year 2016 and categorized as a)  $\leq 20,000$ ; b) 20,001 to 50,000; c) 50,001 to 150,000; and d)  $>150,000$ .<sup>19,20</sup>

The HDI is a comparative measure that summarizes achievements in three fundamental dimensions: long and healthy life, access to knowledge, and a good standard of living. The score is obtained by the geometric mean of the standardized indices for each of the dimensions. Thus, the HDI of each municipality was collected from data provided by IBGE and categorized as a) low, HDI less than 0.550; b) average, between 0.550 and 0.699; c) high, between 0.700 and 0.799; and d) very high, equal to or greater than 0.800.

The PHC coverage data were obtained from the Primary Care Information System (SIAB, Sistema de Informações da Atenção Básica, in Portuguese) for the year 2016. It was categorized as a) absent (coverage equal to 0%); b) incipient (population coverage other than zero and less than 30%); c) intermediate (between 30% and 70% or  $\geq 70\%$  and less than four years after

implementation); and d) consolidated ( $\geq 70\%$  and with at least four years of implementation).<sup>21</sup> PHC coverage with an oral health team was obtained from the SIAB for the year 2016 and categorized as a) absent (coverage equal to 0%); b) incipient (population coverage other than zero and less than 30%); c) intermediate (between 30% and 70% or  $\geq 70\%$ ); and d) consolidated ( $\geq 70\%$ ).

Schooling rates for ages 6 to 14 years and the average local wage in minimum wages were collected from the IBGE data, considering the 2010 Brazilian census and categorized in tertiles.

### Dependent variable

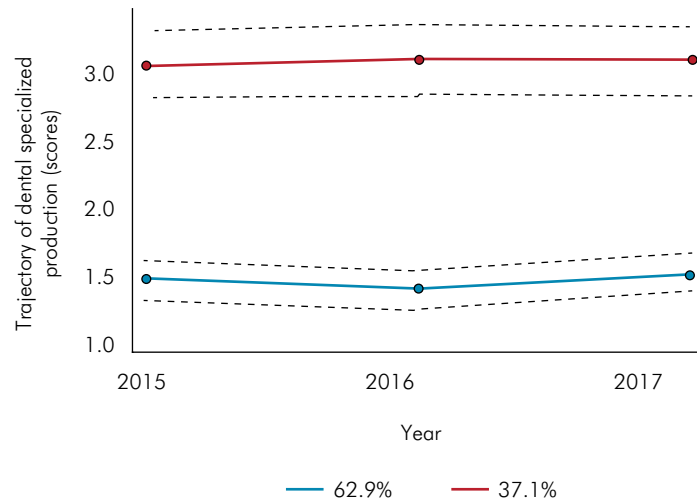
This study examined the trajectory of dental specialized services in municipalities with SPDC. First, we mapped Brazilian municipalities with SPDC, which had to be registered and active during the evaluated period (2015 to 2017) in the National Register of Health Establishments. In addition, we collected the number and type (I, II, or III) of DSCs in each municipality. The main differences between the services lie in the number of professionals and the number of procedures offered by each center. The Brazilian Ministry of Health provides three types of incentives for the implementation and operation of DSC. The incentive for implementation is 60,000 Brazilian Reals (R\$) for DSC Type I (with three dental chairs), R\$ 75,000 for DSC Type II (with four to six chairs), and R\$ 120,000 for DSC Type III (with more than seven dental chairs). The monthly operational incentive ranges according to DSC Type: R\$ 8,250 for DSC Type I, R\$ 11,000 for DSC Type II, and R\$ 19,250 for DSC Type III. Therefore, the DSCs must maintain a minimum monthly production in each specialty, and failure to meet such production for two consecutive months or three non-consecutive months within one year will lead to the suspension of operational incentives. After mapping, the assortment of specialized dental procedures (outlined in Interministerial Ordinance no. 1464, which establishes the financing of DSCs) was investigated in the SUS Outpatient Information System (SIA/SUS).

The procedures were gathered into four groups as outlined in the Interministerial Ordinance: a) basic procedures for patients with special needs; b)

specialized procedures for periodontic treatment; c) specialized procedures for minor oral surgery; and d) specialized procedures for endodontic treatment. Each category was then dichotomized as to the achievement of minimal production following the specifications of the Interministerial Ordinance 1.464/2011.<sup>22</sup> The production analysis was made by the annual number of procedures performed by each municipality with DSC, according to the number of DSCs in each municipality and the type of each DSC. Thus, for each procedure group, the municipality could a) achieve or b) not achieve the minimal production. Therefore, an annual production score was created for each group. Five production achievement scores were considered for each year, with a) score 0 for municipalities that did not meet any goals; b) score 1 for municipalities that met one goal; c) score 2 for municipalities that met two goals; d) score 3 for municipalities that met three goals; and e) score 4 for municipalities that met all goals.

Group-based trajectory modeling was used to identify different trajectories of production over the years.<sup>2,23</sup> The method was designed to identify groups of municipalities sharing similar trajectories of production over time. The models were estimated using the “traj” command in the Stata 16.0 software package. Three time periods (2015, 2016, and 2017) and five production scores were used in the analysis.

The parameters for the trajectory model were determined based on the maximum probability of the quasi-Newton method. The model selection method considers the estimation of the latent number of categories and the order of the polynomial for each latent trajectory. The final number of trajectories was established when the sequential comparisons of the Bayesian information criterion (BIC) and the adjusted BIC between the model with  $k$  and  $k + 1$  trajectories did not result in any further substantial difference in the value of the BIC, *i.e.*, no better adjustment according to the BIC.<sup>24,25</sup> For each group, quadratic trajectories were considered, starting with only one group in a null model. However, four models were initially identified and the two-class model was considered to be the best-fit model, as it had the lowest BIC (1856.45) and the lowest adjusted BIC per sample (1852.61) (Figure 1).



**Figure 1.** Trajectory of dental specialized production in Brazil from 2015 to 2017 (group-based trajectory modeling) (n=839 municipalities)

**Table 1.** Goodness-of-fit statistics and parameter estimates for the trajectory of dental specialized production. (n = 893 municipalities).

Groups	Intercept	Standard error	p-value	Linear slope	Standard error	p-value	Quadratic slope	Standard error	p-value	AIC	BIC	Sample adjusted BIC
1	0.73	0.03	< 0.01	-0.01	0.08	0.87	0.00	0.04	0.93	1867.58	1875.20	1873.56
2	0.03	0.07	< 0.01	-0.04	0.14	0.75	0.01	0.07	0.85	1838.65	1856.45	1852.61
	1.05	0.05	< 0.01	0.00	0.11	0.96	-0.00	0.05	0.96			
3	0.37	0.11	0.01	-0.04	0.20	0.82	0.01	0.09	0.89	1842.65	1870.62	1964.58
	0.37	0.11	0.01	-0.04	0.22	0.83	0.01	0.10	0.90			
	1.05	0.05	< 0.01	0.00	0.11	0.96	-0.00	0.05	0.96			
4	0.37	0.12	0.01	-0.04	0.22	0.83	0.01	0.10	0.90	1.846.65	1884.79	1876.55
	0.37	0.10	0.01	-0.04	0.20	0.82	0.01	0.09	0.89			
	1.05	0.09	< 0.01	0.00	0.17	0.97	-0.00	0.08	0.97			
	1.05	0.08	<0.01	0.00	0.15	0.97	-0.00	0.07	0.97			

AIC: Akaike information cCriterion; BIC: Bayesian information criterion. \*Significance p < 0.05

Thus, we observed a group of municipalities with high production and another one with low dental production. The details of the trajectory constructions are presented in Table 1.

### Statistical analysis

The STATA software package, version 16 (<https://www.stata.com>), was used to analyze the data. First, a descriptive analysis was performed to determine the relative and absolute frequency of the

independent variables and the trajectory of dental specialized production using Fisher’s exact test.

To analyze the factors associated with the high trajectory of dental specialized production, a Poisson regression model was used. Variables with p < 0.250 in the unadjusted model were not included in the final model. A backward stepwise procedure was used to select the variables that should be kept in the final model. Only variables with p ≤ 0.05 were maintained in the final model. The incidence rate

ratio (IRR) and their 95% confidence intervals were estimated. The quality of the model fit was assessed using deviation (-2 log likelihood).

To assess inequalities in the trajectory of dental specialized production, the frequencies according to the average monthly minimum wages, HDI, infant mortality rate, and schooling rate for children aged 6 to 14 years were presented in the equiplot (<http://www.equidade.org/equiplot>). The inequality indicators used were the slope index and the concentration index for the trajectory of dental specialized production. The slope index indicates absolute inequality (in percentage points) ranging from -100 to +100%. The positive results demonstrate a higher frequency of the outcome for the largest indicators. Negative results demonstrate a higher frequency of the outcome for the lowest indicators. The concentration index indicates relative inequality, which ranges from -1 to +1, with positive results indicating a greater concentration of DSCs with the high achievement of goals in the municipalities with the highest stratified areas. The latter result is presented in percentages.

## Results

A total of 1,099 DSCs distributed across 906 municipalities were identified, of which 13.1% were closed during the period. The main reasons for their inactivity were retirement and suspension of contracts. Thus, 954 DSCs located in 893 municipalities were included in the study. The Northeast region had the highest number of DSCs (Table 2). Table 3 presents the descriptive analysis of the independent variables and the trajectory of dental specialized production.

Table 4 details the unadjusted and adjusted association of the independent variables with the trajectory of dental specialized production. Considering the adjusted association, we observed that large population sizes (IRR = 2.84, 95%CI: 1.94–4.14), municipalities with a very high HDI (IRR = 3.34, 95%CI: 1.09–10.24), and the highest tertile of schooling rate (IRR = 1.23, 95%CI: 1.00–1.50) were associated with high trajectory of dental specialized production.

Figure 2 illustrates the inequalities of dental specialized production according to the contextual variables. Considering the analysis of absolute and relative inequalities, the positive results of the slope index showed the frequency of the high trajectory of dental specialized production was higher in the municipalities with the highest average monthly salary, with the best HDI, the lowest infant mortality rate, and the highest schooling rate. Thus, absolute inequality was 52.1% for the average monthly salary, 61.0% for the HDI, -22.1% for the infant mortality rate, and 14.8% for the schooling rate.

Similarly, the positive results of the concentration index indicating the frequency of a high trajectory in the achievement of goals was higher in the municipalities with higher average salary tertiles, with higher HDI, and lower mortality rates (Table 5).

## Discussion

The present study demonstrates that most municipalities had a low trajectory of dental specialized procedures. There are marked inequalities in the trajectory of specialized dental care in Brazil, and absolute and relative inequalities were observed according to the local average monthly salary, HDI, and infant mortality rate. Furthermore, we observed that the local population size, HDI, the schooling rate, and the Brazilian region were the contextual variables that best predicted the trajectory of the dental specialized services, pointing out the effect of socioeconomic inequalities on dental health services.

**Table 2.** Distribution of Dental Specialty Centers by Brazilian regions. (n = 893 municipalities).

Regions	Dental Specialty Centers		
	Type I	Type II	Type III
	Total (mean)	Total (mean)	Total (mean)
Southeast	132 (29.6)	162 (39.9)	26 (25.7)
North East	212 (47.4)	146 (36.0)	40 (39.7)
Midwest	18 (4.0)	32 (9.8)	9 (8.9)
North	27 (6.0)	20 (4.8)	9 (8.9)
South	58 (13.0)	46 (11.3)	17 (16.8)

**Table 3.** Descriptive analysis of independent variables according to the goal achievement trajectory of DSCs, Brazil (n = 893 municipalities).

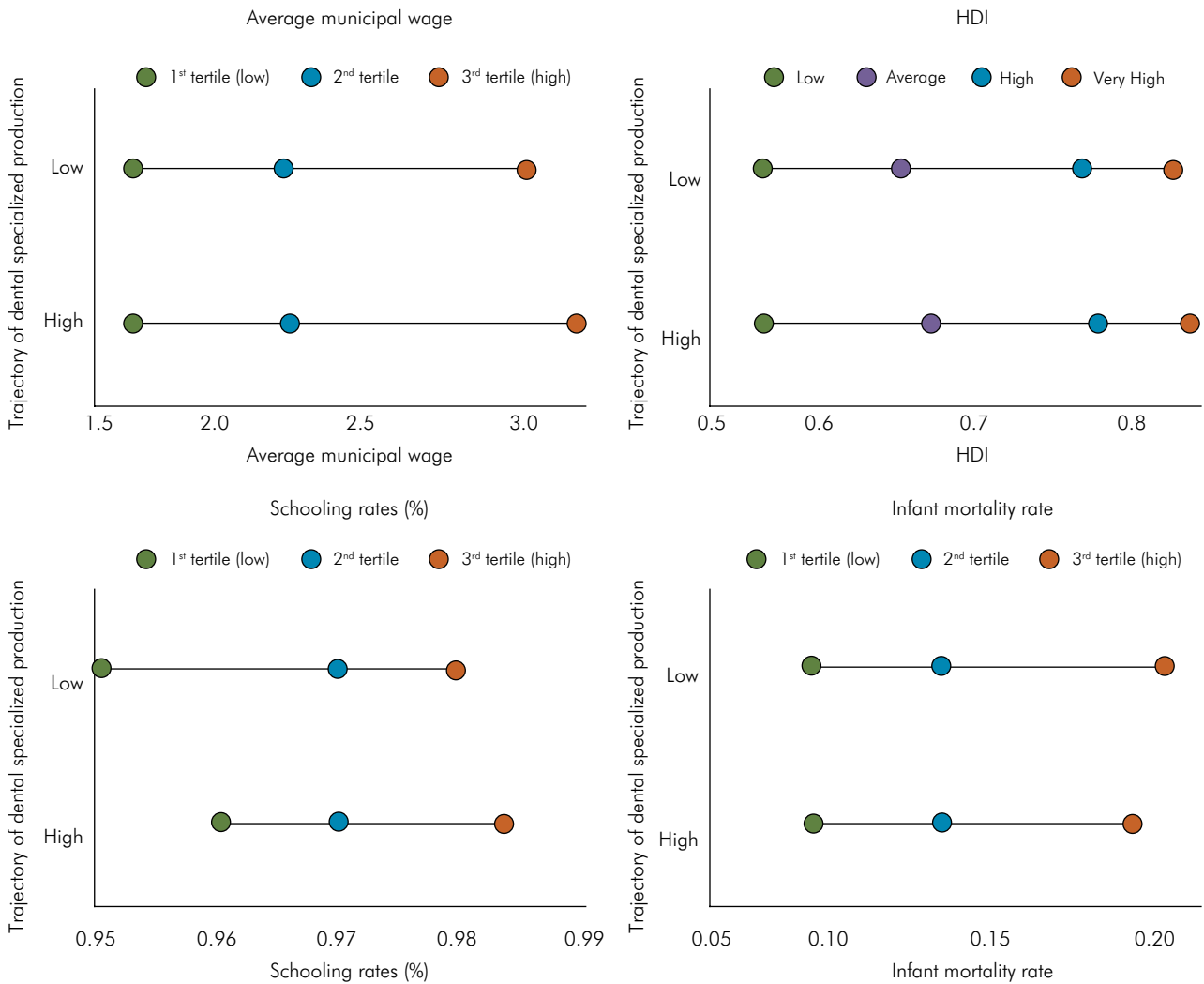
Variables	Trajectory of dental specialized production		
	Low n (%)	High n (%)	
Region			< 0.001
Southeast	143 (47.8)	156 (52.2)	
Northeast	297 (78.6)	81 (21.4)	
Midwest	26 (49.1)	27 (50.9)	
North	27 (54.0)	23 (46.0)	
South	68 (60.7)	44 (39.3)	
Population			< 0.001
≤ 20,000	132 (82.5)	28 (17.5)	
20,001–50,000	230 (73.5)	83 (26.5)	
50,001–150,000	159 (58.5)	113 (41.5)	
> 150,000	40 (27.2)	107 (72.8)	
HDI			< 0.001
Low (<.55)	23 (88.5)	3 (11.5)	
Average (0.55–0.699)	317 (78.3)	88 (21.7)	
High (0.70–0.799)	219 (51.6)	205 (48.4)	
Very high (≥.80)	2 (5.4)	35 (94.6)	
Coverage of PHC			< 0.001
Absent	6 (54.5)	5 (45.5)	
Incipient	20 (36.4)	35 (63.6)	
Intermediate	108 (46.1)	126 (53.9)	
Consolidated	427 (72.1)	165 (27.9)	
Coverage of PHC (with oral health team)			< 0.001
Absent	27 (58.7)	19 (41.3)	
Incipient	78 (41.0)	112 (59.0)	
Intermediate	154 (60.6)	100 (39.4)	
Consolidated	302 (75.1)	100 (24.9)	
Average local wage (tertile)			< 0.001
1 <sup>st</sup> (low)	274 (78.1)	77 (21.9)	
2 <sup>nd</sup>	180 (64.5)	99 (35.5)	
3 <sup>rd</sup> (high)	107 (40.8)	155 (59.2)	
Schooling rates			0.044
1 <sup>st</sup> (low)	214 (67.7)	102 (32.3)	
2 <sup>nd</sup>	179 (62.6)	107 (37.4)	
3 <sup>rd</sup> (high)	168 (57.9)	122 (42.1)	
Infant mortality rate			< 0.001
1 <sup>st</sup> (low)	166 (56.8)	126 (43.1)	
2 <sup>nd</sup>	167 (57.8)	122 (42.2)	
3 <sup>rd</sup> (high)	208 (71.7)	82 (28.3)	



**Table 4.** Unadjusted<sup>c</sup> and adjusted<sup>a</sup> incidence rate ratio (IRR) between contextual variables and high trajectory of dental specialized production in public services, Brazil. (n = 893 municipalities)

Variables	IRR <sup>b</sup> (95% CI)	p-value	IRR <sup>a</sup> (95% CI)	p-value
<b>Region</b>				
Southeast	1		1	
Northeast	0.41 (0.33–0.51)	< 0.001	0.76 (0.56–1.02)	0.005
Midwest	0.97 (0.73–1.29)		1.14 (0.87–1.50)	
North	0.88 (0.64–1.21)		1.19 (0.86–1.65)	
South	0.75 (0.58–0.97)		0.73 (0.58–0.92)	
<b>Population</b>				
≤ 20,000	1		1	
20,001–50,000	1.51 (1.03–2.22)	< 0.001	1.35 (0.91–1.97)	< 0.001
50,001–150,000	2.37 (1.64–3.41)		1.88 (1.29–2.73)	
> 150,000	4.16 (2.93–5.91)		2.84 (1.94–4.14)	
<b>HDI</b>				
Low (< 0,55)	1		1	
Average (0,55–0,699)	1.88 (0.64–5.55)	< 0.001	1.56 (0.53–4.52)	< 0.001
High (0,70–0,799)	4.19 (1.44–12.21)		2.20 (0.73–6.63)	
Very high (≥ 0.80)	8.20 (2.81–23.84)		3.34 (1.09–10.24)	
<b>Coverage of PHC</b>				
Absent	1		-	-
Incipient	1.40 (0.71–2.76)	0.053	-	-
Intermediate	1.18 (0.61–2.29)			
Consolidated	0.61 (0.32–1.18)			
<b>Coverage of PHC (with oral health team)</b>				
Absent	1		-	-
Incipient	1.42 (1.00–2.05)	< 0.001	-	-
Intermediate	0.95 (0.65–1.39)			
Consolidated	0.60 (0.41–0.88)			
<b>Average municipal wage (tertile)</b>				
1 <sup>st</sup> (low)	1		-	-
2 <sup>nd</sup>	1.62 (1.26–2.08)	< 0.001	-	-
3 <sup>rd</sup> (high)	2.69 (2.16–3.36)			
<b>Schooling rates</b>				
1 <sup>st</sup> (low)	1		1	
2 <sup>nd</sup>	1,16 (0.93–1.44)	0.046	0.99 (0.80–1.23)	0.047
3 <sup>rd</sup> (high)	1.30 (1.06–1.61)		1.23 (1.00–1.50)	
<b>Infant mortality rate</b>				
1 <sup>st</sup> (low)	1		-	-
2 <sup>nd</sup>	0.98 (0.81–1.18)	< 0.001	-	-
3 <sup>rd</sup> (high)	0.65 (0.52–0.82)			

-2 log-likelihood empty model = 659.13611; -2 log-likelihood adjusted model = 604.62142



**Figure 2.** Distribution of average monthly salary, HDI, schooling rate, and infant mortality rate according to the trajectory of dental specialized production, Brazil. (n = 893 municipalities)

**Table 5.** Absolute and relative inequalities in the trajectory of dental specialized production according to contextual factors, Brazil (n = 893 municipalities).

Variable	Trajectory of dental specialized production			
	SII (95%CI)	p-value	CIX (95%CI)	p-value
Average municipal wage	52.1 (42.8–61.3)	< 0.001	20.3 (15.4–25.2)	< 0.001
HDI	61.0 (52.5–69.3)	< 0.001	22.5 (17.8–27.2)	< 0.001
Infant mortality rate	-22.1 (-33.4–10.8)	< 0.001	- 10.5 (-15.2–-5.8)	< 0.001
Schooling rates	14.8 (3.3–26.2)	0.012	2.0 (-2.4–7.4)	0.320

SII: slope index; CIX: concentration index; CI95%: 95% confidence interval.

The two most populated Brazilian regions (the Northeast and Southeast, respectively) had the highest number of registered and active DSCs during

the evaluated period. Pedrazzi<sup>26</sup> and Goes<sup>27</sup> found a similar rate for the distribution of DSCs according to regions, revealing the maintenance of this indicator



over time. Also, 62.9% of the municipalities had a low trajectory of dental specialized production; municipalities located in the southern regions had the lowest rates. Important absolute and relative inequalities in the trajectory were also observed. Municipalities with the best performance in dental specialized production were those with the best social indicators, especially HDI. Indeed, higher HDI, lower population density, and health facilities implemented within a shorter timeframe have shown better indicators of public services.<sup>27,28</sup> These findings underscore the importance of public policies that adopt a broader perspective, fostering the encouragement and development of diverse social segments,<sup>10,29</sup> considering that the National Oral Health Policy alone can not solve the mismatches in the assistance model.<sup>30</sup>

The organization and provision of health services seem to be related to human development in the major regions.<sup>31</sup> However, Fernandes<sup>32</sup> observed a pro-equity trend in the opportunity for accessing primary care in oral health instates with the lowest HDI. This could potentially lead to a decrease in oral health inequalities to some extent as a result of the implementation of current political measures. It is important to emphasize that more vulnerable populations do not have access to health care and, when they do, they end up receiving curative or iatrogenic treatment.<sup>33</sup>

The improvement in social indicators does not necessarily imply the reduction of oral health inequalities;<sup>32</sup> however, states and municipalities with an improved HDI have shown better organization and greater provision of health services.<sup>32</sup> Such information is valuable considering the formulation of public health policies. The present study demonstrated that municipalities with wide PHC oral health coverage possess the worst performance trajectories in the outpatient production of required secondary care, as previously observed.<sup>28</sup> This finding highlights a possible mismatch between primary and secondary care in Brazil. We can speculate that public oral health policies may have guided, to some extent, the organization and expansion of primary care networks in more vulnerable regions, due to their low cost and high problem-solving ability. As a

result of increased investment and greater availability of specialists, oral health services in secondary care have been structured into larger and better-organized centers. In line with these findings,<sup>32</sup> an imbalance between specialized procedures and individual dental care was observed in states with higher and lower HDI, suggesting that incentives directed towards primary care for the most vulnerable regions (as programmatic targets) may have potentiated this effect.<sup>5,10,32</sup>

One of the most significant aspects of the present study is that it investigates factors associated with the trajectory of dental specialized production throughout the Brazilian territory, highlighting absolute and relative inequalities. The importance of the evaluations of the services offered by SUS is also highlighted for the improvement of health actions. The utilization of time series analysis in this investigation allows controlling for confounding, ensuring the study's originality and reinforcing its importance. However, there are limitations in the present study associated with the use of secondary data, which may lead to underreporting or overreporting. Nevertheless, it can be assumed that these biases might have occurred in a non-systematic way across municipalities, thus decreasing their impact on the presented results. The findings described in this study can serve as support for the formulation of public health policies, as well as a tool for the integration and improvement of dentistry within the SUS framework.

## Conclusion

Most of the dental specialty centers analyzed herein showed a low trajectory of dental specialized production. Therefore, we emphasize the need to adjust the criteria and guidelines for the implementation and monitoring of secondary oral health care, devising more streamlined models for dental specialty centers that are flexible yet tailored to the epidemiological needs of the local population. We also observed marked inequities in the trajectory of dental specialized production based on contextual factors (local average monthly salary, HDI, and infant mortality rate). Thus, contextual characteristics at

the local level, such as smaller city size, lower HDI, and lower schooling rate, lead to worse trajectories of dental specialized production.

## Acknowledgements

This study was conducted in a graduate program supported by CAPES.

## References

1. Costa DM, Magalhães R. Critical realism and social inequalities: considerations from an evaluative research. *Cien Saude Colet*. 2020 May;25(5):1779-88. <https://doi.org/10.1590/1413-81232020255.33352019>
2. Chisini LA, Collares K, Bastos JL, Peres KG, Peres MA, Horta BL, et al. Skin color affect the replacement of amalgam for composite in posterior restorations: a birth-cohort study. *Braz Oral Res*. 2019 Jul;33:e54. <https://doi.org/10.1590/1807-3107bor-2019.vol33.0054>
3. Chisini LA, Noronha TG, Ramos EC, Santos-Junior RB, Sampaio KH, Faria-E-Silva AL, et al. Does the skin color of patients influence the treatment decision-making of dentists? A randomized questionnaire-based study. *Clin Oral Investig*. 2019 Mar;23(3):1023-30. <https://doi.org/10.1007/s00784-018-2526-7>
4. Höfelmann DA, Gonzalez-Chica DA, Peres KG, Boing AF, Peres MA. Chronic diseases and socioeconomic inequalities in quality of life among Brazilian adults: findings from a population-based study in Southern Brazil. *Eur J Public Health*. 2018 Aug;28(4):603-10. <https://doi.org/10.1093/eurpub/ckx224>
5. Pucca GA Jr, Gabriel M, de Araujo ME, de Almeida FC. Ten years of a National Oral Health Policy in Brazil: innovation, boldness, and numerous challenges. *J Dent Res*. 2015 Oct;94(10):1333-7. <https://doi.org/10.1177/0022034515599979>
6. D'Avila OP, Chisini LA, Costa FD, Cademartori MG, Cleff LB, Castilhos ED. Use of health services and family health strategy households population coverage in Brazil. *Cien Saude Colet*. 2021 Sep;26(9):3955-64. <https://doi.org/10.1590/1413-81232021269.11782021>
7. Pereira CR, Patrício AA, Araújo FA, Lucena EE, Lima KC, Roncalli AG. [Inclusion of oral health teams in the Family Health Program and its impact on the use of dental services]. *Cad Saude Publica*. 2009 May;25(5):985-96. <https://doi.org/10.1590/S0102-311X2009000500005>
8. Ministério da Saúde (BR). Portaria nº. 599 de 2006. Define a implantação de Especialidades Odontológicas (CEO) e de Laboratórios Regionais de Próteses Dentárias (LRPDs) e estabelecer critérios, normas e requisitos para seu credenciamento. *Diário Oficial União*. 2006 Mar 24.
9. Ministério da Saúde (BR). Portaria nº. 600 de 2006. Institui o financiamento dos Centros de Especialidades Odontológicas. *Diário Oficial União* 2006 Mar 24.
10. Antunes JL, Narvai PC. Dental health policies in Brazil and their impact on health inequalities. *Rev Saude Publica*. 2010 Apr;44(2):360-5. <https://doi.org/10.1590/S0034-89102010000200018>
11. Chaves SC, Almeida AM, Rossi TR, Santana SF, Barros SG, Santos CM. Oral health policy in Brazil between 2003 and 2014: scenarios, proposals, actions, and outcomes. *Cien Saude Colet*. 2017 Jun;22(6):1791-803. <https://doi.org/10.1590/1413-81232017226.18782015>
12. Vettore MV, Marques RA, Peres MA. [Social inequalities and periodontal disease: multilevel approach in SBBrasil 2010 survey]. *Rev Saude Publica*. 2013 Dec;47 Suppl 3:29-39. Portuguese. <https://doi.org/10.1590/S0034-8910.2013047004422>
13. Marmot M, Friel S, Bell R, Houweling TA, Taylor S. Closing the gap in a generation: health equity through action on the social determinants of health. *Lancet*. 2008 Nov;372(9650):1661-9. [https://doi.org/10.1016/S0140-6736\(08\)61690-6](https://doi.org/10.1016/S0140-6736(08)61690-6)
14. Costa F, Wendt A, Costa C, Chisini LA, Agostini B, Neves R, et al. Racial and regional inequalities of dental pain in adolescents: Brazilian National Survey of School Health (PeNSE), 2009 to 2015. *Cad Saude Publica*. 2021 Jun;37(6):e00108620. <https://doi.org/10.1590/0102-311x00108620>
15. Costa FD, Costa CD, Chisini LA, Wendt A, Santos ID, Matijasevich A, et al. Socio-economic inequalities in dental pain in children: A birth cohort study. *Community Dent Oral Epidemiol*. 2022 Oct;50(5):360-6. <https://doi.org/10.1111/cdoe.12660>
16. Chisini LA, Sarmiento HR, Collares K, Horta BL, Demarco FF, Correa MB. Determinants of dental prosthetic treatment need: a birth cohort study. *Community Dent Oral Epidemiol*. 2021 Oct;49(5):394-400. <https://doi.org/10.1111/cdoe.12608>
17. Vieira-da-Silva LM, Almeida Filho N. [Health equity: a critical analysis of concepts]. *Cad Saude Publica*. 2009;25 Suppl 2:S217-26. <https://doi.org/10.1590/S0102-311X2009001400004>
18. Celeste RK, Moura FR, Santos CP, Tovo MF. [Analysis of outpatient care in Brazilian municipalities with and without specialized dental clinics, 2010]. *Cad Saude Publica*. 2014 Mar;30(3):511-21. Portuguese. <https://doi.org/10.1590/0102-311X00011913>
19. Ministério da Saúde (BR). Pesquisa nacional de saúde bucal (2010): resultados principais. Brasília, DF: Ministério da Saúde; 2012 [cited 2023 Sep 25]. Available from: [http://bvsm.s.saude.gov.br/bvs/publicacoes/pesquisa\\_nacional\\_saude\\_bucal.pdf](http://bvsm.s.saude.gov.br/bvs/publicacoes/pesquisa_nacional_saude_bucal.pdf). 2010.
20. Chisini L, San Martin A, Pires A, Noronha T, Demarco F, Conde M, et al. Estudo de 19 anos dos procedimentos odontológicos realizados no Sistema Único de Saúde brasileiro. *Cad Saude Colet*. 2019;27(3):345-53. <https://doi.org/10.1590/1414-462x201900030215>

21. Aquino R, Oliveira NF, Barreto ML. Impact of the family health program on infant mortality in Brazilian municipalities. *Am J Public Health.* 2009 Jan;99(1):87-93. <https://doi.org/10.2105/AJPH.2007.127480>
22. Ministério da Saúde (BR). Portaria N° 1.464, de 24 de junho de 2011. Altera o Anexo da Portaria n° 600/GM/MS, de 23 de março de 2006, que institui o financiamento dos Centros de Especialidades Odontológicas(CEO). *Diário Oficial União.* 25 jun 2011.
23. Silva FB, Chisini LA, Demarco FF, Horta BL, Correa MB. Desire for tooth bleaching and treatment performed in Brazilian adults: findings from a birth cohort. *Braz Oral Res.* 2018 Mar;32(0):e12. <https://doi.org/10.1590/1807-3107bor-2018.vol32.0012>
24. Neath A, Cavanaugh J. The bayesian informationcriterion: Background, derivation,and applications. *Wiley Interdiscip Rev Comput Stat.* 2012;4(2):199-203. <https://doi.org/10.1002/wics.199>
25. Burnham K. Model selection and multimodel inference : a practical information-theoretic approach.2nd ed. Springer; 1988.
26. Pedrazzi V, Dias KR, Rode SM. Oral health in Brazil. Part II: dental specialty centers (CEOs). *Braz Oral Res.* 2008;22 Suppl 1:18-23. <https://doi.org/10.1590/S1806-83242008000500004>
27. Goes PS, Figueiredo N, Neves JC, Silveira FM, Costa JF, Pucca Júnior GA, et al. [Evaluation of secondary care in oral health: a study of specialty clinics in Brazil]. *Cad Saude Publica.* 2012;28 Suppl:s81-9. <https://doi.org/10.1590/S0102-311X2012001300009>
28. Cortellazzi KL, Balbino EC, Guerra LM, Vazquez FL, Bulgareli JV, Ambrosano GM, et al. Variables associated with the performance of Centers for Dental Specialties in Brazil. *Rev Bras Epidemiol.* 2014 Dec;17(4):978-88. <https://doi.org/10.1590/1809-4503201400040015>
29. Souza TM, Roncalli AG. [Oral health in the Brazilian Family Health Program: a health care model evaluation]. *Cad Saude Publica.* 2007 Nov;23(11):2727-39. Portuguese; <https://doi.org/10.1590/S0102-311X2007001100020>
30. Chaves S, Almeida A, Reis C, Rossi T, Barros S. Política de saúde bucal no Brasil: as transformações no período 2015-2017. *Saúde Debate.* 2018;42(spe2):76-91. <https://doi.org/10.1590/0103-11042018S206>
31. Neves M, Giordani JM, Hugo FN. [Primary dental healthcare in Brazil: the work process of oral health teams]. *Cien Saude Colet.* 2019 May;24(5):1809-20. Portuguese. <https://doi.org/10.1590/1413-81232018245.08892017>
32. Fernandes JK, Pinho JR, Queiroz RC, Thomaz EB. [Evaluation of oral health indicators in Brazil: a trend towards equity in dental care?]. *Cad Saude Publica.* 2016;32(2):e00021115. Portuguese. <https://doi.org/10.1590/0102-311X00021115>
33. Soares FF, Figueiredo CR, Borges NC, Jordão RA, Freire MC. [Oral health teamwork in Brazilian family healthcare strategy: an analysis of studies published between 2001 and 2008]. *Cien Saude Colet.* 2011 Jul;16(7):3169-80. <https://doi.org/10.1590/S1413-81232011000800017>