

DIFFUSION TENSOR IMAGING OF THE SPINAL CORD: A REVIEW

IMAGEM DA MEDULA ESPINAL POR TENSOR DE DIFUSÃO

IMAGEN DE DIFUSIÓN TENSORA DE LA MÉDULA ESPINAL: UNA REVISIÓN

ADITYA VEDANTAM¹, MICHAEL JIRJIS², GERALD ECKHARDT¹, ABHISHIEK SHARMA¹, BRIAN D. SCHMIT², MARJORIE C. WANG¹, JOHN L. ULMER³, SHEKAR KURPAD¹

ABSTRACT

Diffusion tensor imaging (DTI) is a magnetic resonance technique capable of measuring the magnitude and direction of water molecule diffusion in various tissues. The use of DTI is being expanded to evaluate a variety of spinal cord disorders both for prognostication and to guide therapy. The purpose of this article is to review the literature on spinal cord DTI in both animal models and humans in different neurosurgical conditions. DTI of the spinal cord shows promise in traumatic spinal cord injury, cervical spondylotic myelopathy, and intramedullary tumors. However, scanning protocols and image processing need to be refined and standardized.

Keywords: Diffusion tensor imaging; Magnetic resonance spectroscopy; Spinal cord.

RESUMO

O exame por imagem de ressonância magnética utilizando a técnica de tensores de difusão (DTI, Diffusion tensor imaging) consegue medir a magnitude e direção da difusão de moléculas de água em vários tecidos. A DTI está começando a ser usada para avaliar uma série de patologias da medula espinal, tanto para prognósticos como para orientar o tratamento. O presente artigo revisa a literatura sobre DTI da medula espinal, em modelos animais e humanos, em diferentes condições neurocirúrgicas. A DTI da medula espinal é promissora para lesões traumáticas da medula, mielopatia espondilótica cervical e tumores intramedulares. Contudo, os protocolos de escaneamento e processamento de imagens precisam ser refinados e padronizados.

Descritores: Imagem de tensor de difusão; Espectroscopia de ressonância magnética; Medula espinal.

RESUMEN

La técnica de imagen por difusión tensora (DTI, Diffusion tensor imaging) es una técnica de resonancia magnética que mide la magnitud y dirección de la difusión de moléculas de agua en varios tejidos. El uso de DTI se ha expandido para evaluar una variedad de disturbios de la columna vertebral tanto para pronóstico como para orientación de la terapia. La finalidad de este artículo es revisar la literatura sobre DTI de la médula espinal tanto en modelos animales como en humanos en diferentes condiciones neuroquirúrgicas. La DTI de la médula espinal se muestra promissora en las lesiones traumáticas de la médula, en la mielopatía espondilótica cervical y en los tumores intramedulares. Sin embargo, los protocolos de barrido y el procesamiento de imágenes necesitan ser refinados y estandarizados.

Descriptores: Imagen de difusión tensora; Espectroscopía de resonancia magnética; Médula espinal.

INTRODUCTION

Diffusion tensor imaging (DTI) is a magnetic resonance technique capable of measuring the magnitude and direction of diffusion of water molecules in various tissues. DTI developed from a technique known as diffusion weighted imaging (DWI), which measures the attenuation of MR signals due to diffusion. Stejskal and Tanner¹ first reported the use of pulsed-gradient NMR to study the diffusion of water molecules. This provided the basis for all diffusion imaging technology, and DTI was formally introduced by Basser et al.²⁻³. Subsequent improvements in diffusion MR imaging as well as fiber tracking have led to the diffusion tensor tracking (DTT) technique that enables the visualization of white fiber tracts.

DTI of the brain finds application in the diagnosis of traumatic brain injury⁴⁻⁶, ischemic strokes⁷, and in the pre-operative planning for the treatment of brain tumors⁸⁻⁹. Tractography also enables the determination of white matter connectivity within the complex anatomy of the brain. DTI of the spinal cord in humans was initially inadequate due to the small area of the cord, cardiac and respiratory motion artifacts as well as scanning time required¹⁰. Improvements in scanning protocols have allowed for the use of DTI in spinal cord

disease. DTI is able to detect cord damage in areas that appear normal on T2W images^{11,12} and has the potential to provide noninvasive biomarkers of spinal cord pathology. Currently, the use of DTI is being expanded to evaluate a variety of spinal cord disorders both for prognostication as well as for guiding therapy.

In this paper, we review the literature on spinal cord DTI in both animal models and humans. We provide a summary of the use of spinal cord DTI in a few neurosurgical conditions. We hope that by providing a review on the current role of spinal cord DTI we may be able to better direct future efforts in this field.

Principles of Diffusion Tensor Imaging

Diffusion MRI provides a measure of the displacement of water molecules in tissues. Displaced water molecules produce an attenuated signal during diffusion MR scanning. By its nature, the axonal architecture in CNS white matter promotes diffusion of water molecules in a direction predominantly parallel, rather than perpendicular, to axon fibers^{3,13-14}. Diffusion perpendicular to the fibers seems to be limited by cell membranes more than myelin sheaths¹⁵⁻¹⁶. This direction-dependent diffusion is described as 'anisotropic' and is

1. MD, PhD, Department of Neurosurgery, Medical College of Wisconsin, Milwaukee, WI, USA.

2. PhD, Department of Biomedical Engineering, Marquette University, Milwaukee, WI, USA.

3. MD Department of Radiology, Medical College of Wisconsin, Milwaukee, WI, USA.

This project was developed at the Department of Neurosurgery, Milwaukee, WI, USA.

Correspondence: Shekar N Kurpad. Department of Neurosurgery Medical College of Wisconsin 9200 West Wisconsin Ave. Milwaukee, WI, USA. 53226. skurpad@mcw.edu

used by DTI to infer the orientation of surrounding axonal fibers and to delineate anatomical boundaries. DTI uses a tensor framework to characterize molecular motion in multiple directions in a three-dimensional space. The diffusivities along the three principle axes are defined by the eigenvectors where λ_1 (primary eigenvector) represents the direction and magnitude of the longitudinal diffusion vector, while λ_2 and λ_3 represent vectors along the minor axes. The magnitudes of these vectors are used to calculate a number of indices, of which the commonly used parameters are described below:

$$\text{Fractional anisotropy (FA)} = \sqrt{(\lambda_1 - \lambda_2)^2 + (\lambda_2 - \lambda_3)^2 + (\lambda_3 - \lambda_1)^2} / \sqrt{2(\lambda_1^2 + \lambda_2^2 + \lambda_3^2)}$$

Longitudinal apparent diffusion coefficient (IADC) = magnitude of the primary eigenvalue (λ_1)

Transverse apparent diffusion coefficient (tADC) = average of the two minor eigenvalues ($\lambda_2 + \lambda_3/2$)

Mean diffusivity (MD) = average diffusivity all 3 eigenvalues ($\lambda_1 + \lambda_2 + \lambda_3/3$). This value is equivalent to the scalar ADC used in routine DWI.

Anisotropy index (AI) = tADC/IADC

FA, which ranges from 0-1, defines the degree of anisotropy and tissues with high anisotropy have a value closer to 1. While the IADC of the spinal cord represents rostral-caudal diffusivity along white matter fibers, the tADC is a measure of axial/radial diffusivity. The eigenvalues are affected by microstructural alterations that affect the diffusion of water molecules and this forms the basis for using DTI indices to identify spinal cord pathology.

DTI studies in rat models

DTI measurements of rat spinal cord

DTI measurements of the rat spinal cord were initially performed *ex vivo*¹⁷⁻²⁰, or *in vivo* using implantable coils²¹⁻²⁷. The majority of these studies used scanners with field strengths from 4.7 T to 7 T. With improved technology, *in vivo* measurements were possible with higher field strength scanners^{28,29}, and without implantable coils²⁸⁻³¹. The results of DTI studies on animal spinal cords indicate that DTI values clearly differentiate white (WM) and gray matter (GM)^{17,26,28,32,33}. Since diffusion occurs preferentially along axonal bundles, WM is significantly more anisotropic compared to GM^{16,33}. More recently, significant differences between levels (cervical, thoracic, and caudal) in IADC, tADC, MD, FA and AI have been described²⁸. In particular, a lower tADC and higher IADC has been observed in WM tracts in the cervical region compared to the thoracic levels. This is probably a result of tightly packed large diameter axons in the cervical WM³⁴. Also, anatomical differences account for a larger IADC and tADC in the cauda equina compared to the spinal cord WM²⁸. Thus diffusion properties are not uniform throughout the length of the cord and vary according to the level being studied. These results further establish the usefulness of DTI to delineate neural structures in the spinal cord.

DTI measurements after spinal cord injury (SCI)

One of the important applications of DTI is the evaluation of SCI in animal models. In one of the earliest studies that used a rat SCI model, Ford et al.³⁵ described significant decreases in IADC and increases in tADC at the level of injury as well as in areas of the cord that were apparently normal on conventional T2-weighted images. Experimental SCI leads to disruption of cell membranes and increased membrane permeability at the level of the lesion which results in increased diffusivity and lower anisotropy^{21,36,37}. In hyperacute SCI (0-6 hours), diffusion measurements are able to distinguish SCI based on severity³⁸. However, the unique feature of DTI is its ability to detect changes in diffusion metrics at regions remote from the lesion^{21,39-41}. An overall reduction in IADC throughout the cord and a decrease in MD remote from the lesion has been described during recovery from SCI⁴⁰. These findings are possibly related to cytotoxic edema, axonal loss or chronic atrophy⁴²⁻⁴⁴. Interestingly, the changes in DTI measures

away from the lesion are not limited to the white matter tracts only. At our center, we found that motor neurons rostral to the lesion were enlarged after SCI and this was associated with an increase in the FA of the rostral GM (unpublished data), indicating that the gray matter is also affected rostral to the lesion. Studies have shown that spinal cord gray matter is affected by ischemia due to impaired microvascular perfusion⁴⁵ and is characterized by astrogliosis during recovery⁴⁶. Using DTI to track these remote gray matter changes will help us better understand the pathophysiology of SCI. Since there are changes in diffusivities throughout the cord after SCI, it is apparent that recovery from SCI is not limited to the epicenter alone.

Several authors have reported histological correlations to DTI changes following SCI in rat models^{38,47-50}. Progressive cavitation of the cord with rostral-caudal spreading has been observed throughout the recovery period (Figure 1)⁴⁷. Lesion growth rate, measured at about 57 micrometers/day, is consistent with axonal degeneration rates⁵¹. While an increase in MD after injury accurately maps the extent of degeneration, a decrease in FA is sensitive to cavity formation within the cord⁴⁷. However, not all histological changes seem to be accurately reflected in DTI measurements^{41,52,53}. DTI values have been shown to be more affected by axonal injury than demyelination^{41,53}, suggesting that the diverse tissue damage as a result of SCI may not be completely captured by diffusion measurements.

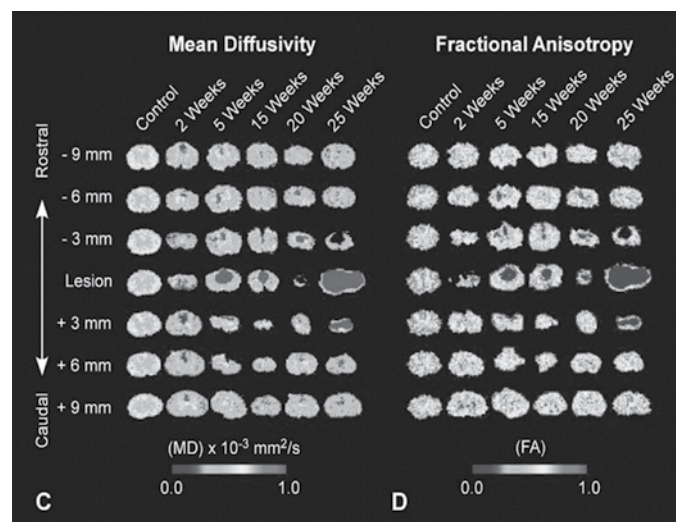


Figure 1. Ex vivo DTI images of axial slices of the spinal cord of example specimens at 2, 5, 15, 20 and 25 weeks post injury. DTI was useful for obtaining a detailed description of the structure of the spinal cord after injury and showed the development of cavitation at the injury site. Mean diffusivity (MD) is shown on the left and fractional anisotropy (FA) is shown on the right.

DTI and functional correlates in SCI

DTI metrics have been correlated with electrophysiological measures, so as to identify which diffusion measures could act as predictors of neurological function. The use of cortical sensory evoked potentials (SEPs) to assess cord integrity in SCI models has been limited by its sensitivity to anesthetic agents⁵⁴⁻⁵⁵ and changes in body temperature⁵⁶. Spinal SEPs (SpSEPs) represent a reliable technique to obtain repeated recordings.⁵⁷⁻⁵⁸ Our center established a minimally invasive method to characterize mid- to long-latency SpSEPs in a rat SCI model which correlated well with the Basso, Beattie, and Bresnahan (BBB) score⁵⁹. Subsequently, SpSEPs were also found to be associated with changes in DTI values⁶⁰. DTI measurements of the medial spinothalamic tracts and dorsal columns correlated with very early and early components of the SpSEPs, while diffusion measures of the lateral spinothalamic tracts were linked to the late components. In other SCI studies²¹, the IADC of the rostral white matter correlated with the BBB score, while the tADC caudal to the lesion was correlated with the grid walk test⁴¹. Kim et al.⁶¹ were able to predict hindlimb motor recovery using the

Basso mouse scale (BMS) by measuring the IADC of the spared ventrolateral WM at 3 hours post-SCI. Since axonal structure and integrity have been closely linked to MR diffusion measurements^{34,37} the above correlations emphasize the utility of DTI to mirror both the structural and functional properties of axons.

The role of DTI in therapeutic interventions for SCI has been explored in a few studies. While DTI can accurately identify the level of white matter disruption, it can also characterize the orientation of the glial scar as well as the degree of axonal dieback and preservation, thereby providing valuable data on regenerative potential following SCI^{19,20}. Additionally, the tADC and AI around the injured site have been shown to correlate with behavioral recovery in rats that were transplanted with fibroblasts following SCI³⁹. In the future, it is expected that spinal cord DTI will be used to monitor transplants and other therapeutic interventions for SCI.

DTI studies in humans

DTI in the intact human spinal cord

DTI studies of the spinal cord in healthy subjects have established baseline values, thereby allowing us to study diseased states⁶²⁻⁶⁷. Good contrast is observed between GM and WM regions, with the highly anisotropic WM having much higher FA values than the central GM (Figure 2). While the magnitude of FA of the whole cord decreases in the rostral-caudal direction, the MD is relatively constant throughout the cord. Also, the primary eigenvalue (λ_1) is higher at the cervical levels compared to the thoracolumbar segments, probably due to the high proportion of large-diameter axons at the cervical cord⁶⁷.

DTI measurements are age-dependent, and reflect microstructural changes in the spinal cord associated with ageing⁶⁸⁻⁷¹. In 25 healthy subjects studied at our center, we found that the FA across the cervical spinal cord decreased significantly after 55 years of age (accepted for publication) (Figure 3). While these results further emphasize the need to compare DTI measurements in patients with age-matched controls, they also indicate that DTI values in the elderly need to be evaluated in the light of normal age-related variations.

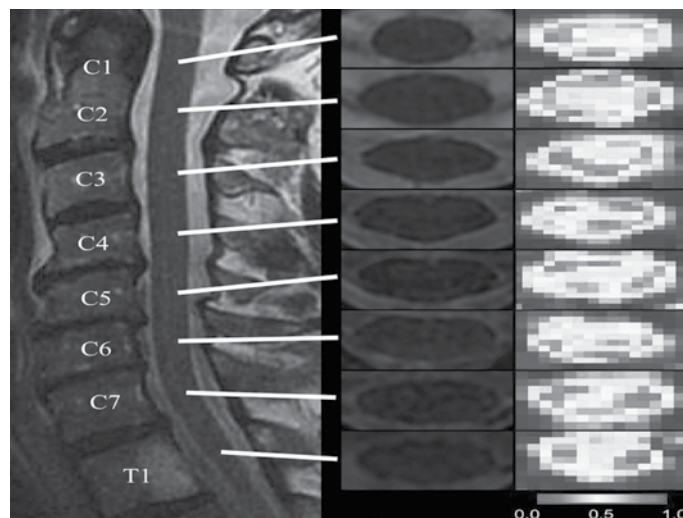


Figure 2. Sagittal T2W MR image (left) of the cervical spine in a normal subject with the corresponding axial T2W images at each cervical level (middle). FA maps (right) at each cervical level show better cross-sectional anatomy with lower anisotropy in the central gray matter and higher anisotropy in the white matter funiculi.

DTI in human SCI

In acute SCI, both the FA and ADC are decreased around the injured level. Facon et al.⁷² showed that although ADC decreased in the majority of SCI patients, it was not as sensitive as FA in the detection of acute SCI. The authors suggested that the use of ADC be restricted to chronic spinal cord compression. However, Shanmuganathan et al.⁷³ reported that ADC was the most sensitive marker

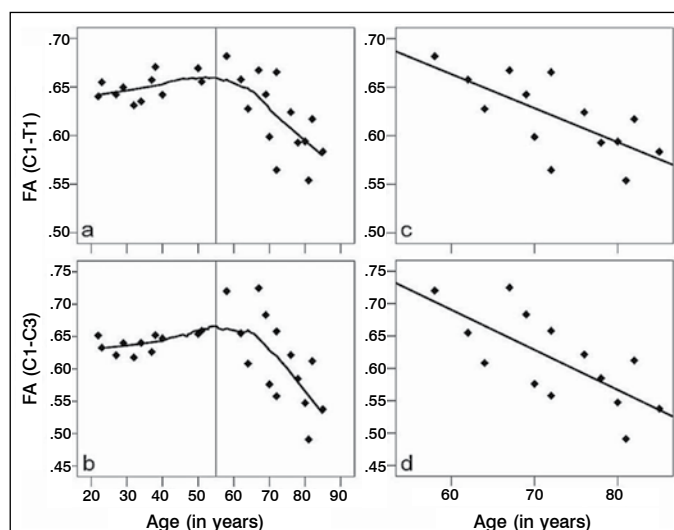


Figure 3. Scatter plots showing the relationship between FA and age. a-b: Lowess curves drawn on scatter plots for healthy subjects ($n=25$) showing a sharp decrease in FA after the age of 55 (solid line); c-d: Linear regression lines for entire cervical spinal cord ($R^2=0.5$, $p=0.004$) and upper cervical cord ($R^2=0.52$, $p=0.003$) showing FA as a function of age in subjects > 55 years ($n=14$).

of acute cervical cord injury and found it to be uniformly decreased in patients with cervical spine trauma. Acute SCI is characterized by edema, hemorrhage and inflammation that usually subside in 72 hours⁷⁴. Neural injury is characterized by axonal injury, demyelination and the disruption of cellular membranes. The FA and IADC are decreased by the interruption of longitudinal white fibers, while intracellular and intercellular edema contribute to increased tADC. The FA, MD and tADC are derived parameters that are dependent on the relative changes of the individual eigenvalues. Choosing a DTI parameter that best characterizes SCI remains a challenge and authors have suggested that the individual eigenvalues are more useful than anisotropy measures in representing microstructural changes¹⁷. At our center, we have found that FA decreased and AI increased both at the level of injury as well as at caudal levels in patients ($n=6$) > 48 hours after acute SCI (unpublished data). Additionally, we have shown that axial FA maps and tractography are sensitive to asymmetric cord damage in acute SCI and can supplement conventional MR imaging in this setting⁷⁵. The prognostic value of DTI indices in acute SCI is still unclear. In one study, higher ADC values at the injured site were associated with better postoperative neurosurgical cervical spine scale (NCSS) scores but not Frankel scale measures⁷⁶. Another report showed that the MD, IADC and tADC were correlated with the ASIA motor score only in patients with non-hemorrhagic contusions⁷⁷. The ASIA score is a reliable measure of spinal cord injury and is useful in tracking neurological recovery⁷⁸. However, the correlation between DTI parameters with other outcome scales such as the functional independence measure (FIM), Walking index for spinal cord injury (WISCI), 6-minute walk test (6MWT), spinal cord injury measure (SCIM) and the modified Barthel Index (mBI)⁷⁹⁻⁸⁰ have not been explored. There is a need to use a standardized functional outcome score in order to define the prognostic value of DTI indices. Moreover, if diffusion metrics of individual white matter tracts or funiculi within the spinal cord are measured, it becomes essential to use scales that measure both sensory and motor function.

Chronic SCI is associated with a number of microstructural neural changes including demyelination^{81,82}, remyelination^{83,84}, axonal loss⁸³ and atrophy⁸⁵ that affect the diffusion of water molecules. MD, tADC, and IADC have been shown to be significantly greater in injured patients compared to corresponding levels in neurologically intact controls. The FA value at the site of the lesion is greatly reduced and appears to depend on both the level of injury and the completeness of the injury⁸⁶. Chang et al.⁸⁷ showed that FA values

and connection rates of fiber tracking correlated with motor score in patients with chronic cervical cord injury. In chronic SCI, markers of neuronal damage are important to rehabilitation and therapeutic interventions. Both cellular and electrophysiological approaches to stimulate neural regeneration in SCI patients rely on accurate delineation of the lesion. It is possible to use the FA values to locate the epicenter of the lesion, thus enabling the targeted transplantation of stem cells or drugs. While the rostral extent of the lesion can be obtained readily by clinical examination⁸⁸, the caudal boundary is more difficult to discern. DTI offers additional information on the viability of spinal cord tissue below the clinical lesion level and this is particularly important when considering interventions that target the spinal cord below the level of the lesion⁸⁹. Additionally, mapping the lesion using DTI could be useful in newer therapeutic modalities that implant biopolymers as scaffolds for neural regeneration⁹⁰.

DTI applications in cervical spondylotic myelopathy (CSM)

CSM is the most common spinal disorder in patients over the age of 55 years⁹¹. The complex pathophysiology of CSM includes mechanical spinal cord compression due to disc protrusion, osteophytes or ossified posterior longitudinal ligament as well as secondary cord ischemia^{92,93}. In an effort to study CSM in animal models, a variety of methods to induce chronic cord compression have been used⁹⁴⁻⁹⁷. The use of DTI in animal models of CSM has been described only in a few studies, showing low FA and IADC values and increased tADC measures at the compressed level^{97,98}. However, chronic compression in rat models is often induced with a dorsal or dorso-lateral approach, which does not replicate the predominantly ventral compression seen in patients. Also, CSM in humans is affected by multi-directional neck motion that cannot be adequately reproduced in animal models. Thus the use of DTI to study CSM in animals is limited, primarily due to a lack of an appropriate model.

Reis et al.⁶² reported that diffusion MRI was able to detect cord changes in patients with narrow cervical canals, in spite of normal T1W and T2W images. Other authors have corroborated these findings suggesting that DTI is more sensitive to identify cord damage than regular T2W images of the cervical spine in patients with CSM^{11,99-101}. Across studies, FA has been shown to be lower at the affected level in patients compared to corresponding levels in controls. MD values, however, are not uniformly sensitive to white matter changes due to chronic spinal cord compression. Mild neural damage in CSM is characterized by edema, demyelination, gliosis and nerve loss. Subsequently, necrosis and myelomalacia occur signifying permanent cord damage¹⁰². DTI indices in CSM patients appear to depend on the degree of cord damage. However, DTI measurements do not have consistent correlations with clinical scores of patients with CSM^{101,103-105}. Recently, authors have shown that symptomatic CSM patients have lower FA values and higher ADC measures at the compressed level, as compared to asymptomatic patients¹⁰⁶. It therefore appears that DTI has a role to play in the preoperative planning of CSM patients, but the use of DTI to decide on surgical intervention or monitor recovery is yet to be investigated in detail.

DTI in spinal cord tumors

DTT has been used to describe the orientation and location of white matter fibers around brain tumors¹⁰⁷⁻¹⁰⁹. Recent studies have employed tractography in spinal cord astrocytomas and ependymo-

mas^{110,111}. Tumor mass is characterized by a decrease in FA and increase in ADC. The use of fiber tracking to delineate displaced white matter tracts seems to be particularly useful in solid tumors. In cystic tumors and tumors with considerable vasogenic edema, the increased diffusion of water molecular leads to erroneous fiber tracking. As such, a recent study found DTT to have a sensitivity of 87.5% and a specificity of 100% for predicting tumor resectability preoperatively¹¹². The authors of this study also classified tumors into 3 types based on the number of fibers coursing through the tumor. Type 1 tumors, which had no fibers within the tumor, were deemed resectable while type 3 tumors that had fibers completely encased by the tumor were considered unresectable. Type 2 tumors had variable number of fibers within the tumor substance and resectability was based on the proportion of fibers within the tumor volume. However, this study did not correlate functional outcomes with the type of tumor and this relationship needs to be explored. Overall, the use of tractography shows much promise in the surgical planning of spinal cord tumors, as it has in brain tumor resection.

DTI has been used in a variety of other spinal cord disorders including multiple sclerosis¹¹³⁻¹¹⁵, syringomyelia^{116,117}, and myelitis¹¹⁸. Although, many of these studies are able to characterize DTI parameters in diseased states, the routine use of DTI in the clinical setting is yet to be realized

Limitations of DTI

Spinal cord DTI in humans still has a number of limitations. Adequate spatial resolution remains a problem and it is difficult to visualize the individual funiculi on diffusion-weighted images, particularly in the lower thoracic cord⁶⁷. DTI of these segments is affected more by artifacts arising from cardiac and respiratory motion as well as CSF pulsation¹¹⁹. The use of faster imaging techniques such as parallel imaging, single shot echo-planar imaging as well as the use of cardiac pulse-gating have helped to reduce these artifacts. However, scan acquisition time is still a limitation for patients with acute SCI since these patients cannot withstand even 30 minutes of additional scanning time in the MRI suite. The signal to noise ratio in human SCI is sub-optimal in most studies and can lead to overestimation of anisotropy measures, particularly in low-anisotropic tissues such as the central gray matter¹²⁰. The use of 3T MR scanners does improve the SNR¹²¹, but is still not used universally. The use of DTI postoperatively is hampered significantly by the use of spinal instrumentation, which creates numerous artifacts and this issue is currently unresolved. Additionally, standardized software to process tensor images is essential to make this a feasible option for routine clinical use.

FINAL CONSIDERATIONS

DTI has given us a unique insight into the pathophysiology and microstructural alterations associated with spinal cord disorders. While initial studies in rat models have primed this modality for human research, more data is required on the accuracy and reliability of DTI indices in defining cord pathology. DTI of the spinal cord does show promise in certain neurosurgical conditions such as traumatic SCI, CSM and intramedullary tumors. However, scanning protocols and image processing need to be refined and standardized. Once these challenges are overcome, we can expect the use of DTI in mainstream clinical practice, both to prognosticate as well as monitor patients with spinal cord disease.

REFERENCES

1. Stejskal E, Tanner J. Spin diffusion measurements: spin echoes in the presence of a time-dependent field gradient. *J Chem Phys*. 1965;42(1):288.
2. Basser PJ, Mattiello J, LeBihan D. Estimation of the effective self-diffusion tensor from the NMR spin echo. *J Magn Reson B*. 1994;103(3):247-54.
3. Basser PJ, Mattiello J, LeBihan D. MR diffusion tensor spectroscopy and imaging. *Bio-phys J*. 1994;66(1):259-67.
4. Kraus MF, Susmaras T, Caughlin BP, Walker CJ, Sweeney JA, Little DM. White matter integrity and cognition in chronic traumatic brain injury: a diffusion tensor imaging study. *Brain*. 2007;130(Pt 10):2508-19.
5. Niogi SN, Mukherjee P, Ghajar J, Johnson C, Kolster RA, Sarkar R, et al. Extent of microstructural white matter injury in postconcussive syndrome correlates with impaired cognitive reaction time: a 3T diffusion tensor imaging study of mild traumatic brain injury. *AJNR Am J Neuroradiol*. 2008;29(5):967-73.
6. Sidaros A, Engberg AW, Sidaros K, Liptrot MG, Herning M, Petersen P, et al. Diffusion tensor imaging during recovery from severe traumatic brain injury and relation to clinical outcome: a longitudinal study. *Brain*. 2008;131(Pt 2):559-72.
7. Lutsep HL, Albers GW, DeCrespigny A, Kamat GN, Marks MP, Moseley ME. Clinical utility of diffusion-weighted magnetic resonance imaging in the assessment of ischemic stroke.

- Ann Neurol. 1997;41(5):574-80.
8. Koga T, Maruyama K, Kamada K, Ota T, Shin M, Itoh D, et al. Outcomes of Diffusion Tensor Tractography-Integrated Stereotactic Radiosurgery. *Int J Radiat Oncol Biol Phys*. 2012;82(2):799-802.
 9. Ulmer JL, Salvan CV, Mueller WM, Krouwer HG, Stroe GO, Aralasmak A, et al. The role of diffusion tensor imaging in establishing the proximity of tumor borders to functional brain systems: implications for preoperative risk assessments and postoperative outcomes. *Technol Cancer Res Treat*. 2004;3(6):567-76.
 10. Clark CA, Werring DJ. Diffusion tensor imaging in spinal cord: methods and applications - a review. *NMR in Biomedicine*. 2002;15(7-8):578-86.
 11. Demir A, Ries M, Moonen CT, Vital JM, Dehais J, Arne P, et al. Diffusion-weighted MR imaging with apparent diffusion coefficient and apparent diffusion tensor maps in cervical spondylotic myelopathy. *Radiology*. 2003;229(1):37-43.
 12. Shen H, Tang Y, Huang L, Yang R, Wu Y, Wang P, et al. Applications of diffusion-weighted MRI in thoracic spinal cord injury without radiographic abnormality. *Int Orthop*. 2007;31(3):375-83.
 13. Basser PJ, Pierpaoli C. Microstructural and physiological features of tissues elucidated by quantitative-diffusion-tensor MRI. *J Magn Reson B*. 1996;111(3):209-19.
 14. Basser PJ. Inferring microstructural features and the physiological state of tissues from diffusion-weighted images. *NMR Biomed*. 1995;8(7-8):333-44.
 15. Beaulieu C, Allen PS. Determinants of anisotropic water diffusion in nerves. *Magn Reson Med*. 1994;31(4):394-400.
 16. Beaulieu C. The basis of anisotropic water diffusion in the nervous system - a technical review. *NMR Biomed*. 2002;15(7-8):435-55.
 17. Schwartz ED, Hackney DB. Diffusion-weighted MRI and the evaluation of spinal cord axonal integrity following injury and treatment. *Exp Neurol*. 2003;184(2):570-89.
 18. Schwartz ED, Cooper ET, Chin CL, Wehrli S, Tessler A, Hackney DB. Ex vivo evaluation of ADC values within spinal cord white matter tracts. *AJNR Am J Neuroradiol*. 2005;26(2):390-7.
 19. Schwartz ED, Duda J, Shumsky JS, Cooper ET, Gee J. Spinal cord diffusion tensor imaging and fiber tracking can identify white matter tract disruption and glial scar orientation following lateral funiculotomy. *J Neurotrauma*. 2005;22(12):1388-98.
 20. Schwartz ED, Chin CL, Shumsky JS, Jawad AF, Brown BK, Wehrli S, et al. Apparent diffusion coefficients in spinal cord transplants and surrounding white matter correlate with degree of axonal dieback after injury in rats. *AJNR Am J Neuroradiol*. 2005;26(1):7-18.
 21. Deo AA, Grill RJ, Hasan KM, Narayana PA. In vivo serial diffusion tensor imaging of experimental spinal cord injury. *J Neurosci Res*. 2006;83(5):801-10.
 22. Fenyes DA, Narayana PA. In vivo echo-planar imaging of rat spinal cord. *Magn Reson Imaging*. 1998;16(10):1249-55.
 23. Elshafiey I, Bilgen M, He R, Narayana PA. In vivo diffusion tensor imaging of rat spinal cord at 7 T. *Magn Reson Imaging*. 2002;20(3):243-7.
 24. Fenyes DA, Narayana PA. In vivo diffusion tensor imaging of rat spinal cord with echo planar imaging. *Magn Reson Med*. 1999;42(2):300-6.
 25. Fenyes DA, Narayana PA. In vivo diffusion characteristics of rat spinal cord. *Magn Reson Imaging*. 1999;17(5):717-22.
 26. Madi S, Hasan KM, Narayana PA. Diffusion tensor imaging of in vivo and excised rat spinal cord at 7 T with an icosahedral encoding scheme. *Magn Reson Med*. 2005;53(1):118-25.
 27. Bilgen M, Elshafiey I, Narayana PA. In vivo magnetic resonance microscopy of rat spinal cord at 7 T using implantable RF coils. *Magn Reson Med*. 2001;46(6):1250-3.
 28. Ellingson BM, Kurpad SN, Li SJ, Schmit BD. In vivo diffusion tensor imaging of the rat spinal cord at 9.4T. *J Magn Reson Imaging*. 2008;27(3):634-42.
 29. Bilgen M, Al-Hafez B, Berman NEJ, Festoff BV. Magnetic resonance imaging of mouse spinal cord. *Magn Reson Med*. 2005;54(5):1226-31.
 30. Fraidakis M, Klason T, Cheng H, Olson L, Spenger C. High-resolution MRI of intact and transected rat spinal cord. *Exp Neurol*. 1998;153(2):299-312.
 31. Franconi F, Lemaire L, Marescaux L, Jallet P, Le Jeune JJ. In vivo quantitative microimaging of rat spinal cord at 7T. *Magn Reson Med*. 2000;44(6):893-8.
 32. Kim JH, Haldar J, Liang ZP, Song SK. Diffusion tensor imaging of mouse brain stem and cervical spinal cord. *J Neurosci Methods*. 2009;176(2):186-91.
 33. Moseley ME, Cohen Y, Kucharczyk J, Mintorovitch J, Asgari HS, Wendland MF, et al. Diffusion-weighted MR imaging of anisotropic water diffusion in cat central nervous system. *Radiology*. 1990;176(2):439-45.
 34. Schwartz ED, Cooper ET, Fan Y, Jawad AF, Chin CL, Nissano J, et al. MRI diffusion coefficients in spinal cord correlate with axon morphology. *Neuroreport*. 2005;16(1):73-6.
 35. Ford JC, Hackney DB, Alsop DC, Jara H, Joseph PM, Hand CM, et al. MRI characterization of diffusion coefficients in a rat spinal cord injury model. *Magn Reson Med*. 1994;31(5):488-94.
 36. Shi R, Pryor JD. Pathological changes of isolated spinal cord axons in response to mechanical stretch. *Neuroscience*. 2002;110(4):765-77.
 37. Ford JC, Hackney DB, Lavi E, Phillips M, Patel U. Dependence of apparent diffusion coefficients on axonal spacing, membrane permeability, and diffusion time in spinal cord white matter. *J Magn Reson Imaging*. 1998;8(4):775-82.
 38. Loy DN, Kim JH, Xie M, Schmidt RE, Trinkaus K, Song SK. Diffusion Tensor Imaging Predicts Hyperacute Spinal Cord Injury Severity. *Journal of Neurotrauma*. 2007;24(6):979-90.
 39. Schwartz ED, Shumsky JS, Wehrli S, Tessler A, Murray M, Hackney DB. Ex vivo MR determined apparent diffusion coefficients correlate with motor recovery mediated by intraspinal transplants of fibroblasts genetically modified to express BDNF. *Exp Neurol*. 2003;182(1):49-63.
 40. Ellingson BM, Kurpad SN, Schmit BD. Ex vivo diffusion tensor imaging and quantitative tractography of the rat spinal cord during long-term recovery from moderate spinal contusion. *J Magn Reson Imaging*. 2008;28(5):1068-79.
 41. Sundberg LM, Herrera JJ, Narayana PA. In vivo longitudinal MRI and behavioral studies in experimental spinal cord injury. *J Neurotrauma*. 2010;27(10):1753-67.
 42. Loubinoux I, Volk A, Borredon J, Guirimand S, Tiffon B, Seylaz J, et al. Spreading of vaso-genic edema and cytotoxic edema assessed by quantitative diffusion and T2 magnetic resonance imaging. *Stroke*. 1997;28(2):419-26.
 43. Lu H, Sun SQ. A correlative study between AQP4 expression and the manifestation of DWI after the acute ischemic brain edema in rats. *Chin Med J (Engl)*. 2003;116(7):1063-9.
 44. Ellingson BM, Ulmer JL, Prost RW, Schmit BD. Morphology and morphology in chronic spinal cord injury assessed using diffusion tensor imaging and fuzzy logic. *Conf Proc IEEE Eng Med Biol Soc*. 2006;1:1885-8.
 45. Koyanagi I, Tator CH, Theriault E. Silicone rubber microangiography of acute spinal cord injury in the rat. *Neurosurgery*. 1993;32(2):260.
 46. Barrett CP, Guth L, Donati EJ, Krikorian JG. Astroglial reaction in the gray matter of lumbar segments after midthoracic transection of the adult rat spinal cord. *Exp Neurol*. 1981;73(2):365-77.
 47. Ellingson BM, Schmit BD, Kurpad SN. Lesion growth and degeneration patterns measured using diffusion tensor 9.4-T magnetic resonance imaging in rat spinal cord injury. *J Neurosurg Spine*. 2010;13(2):181-92.
 48. Zhang J, Jones M, DeBoy CA, Reich DS, Farrell JA, Hoffman PN, et al. Diffusion tensor magnetic resonance imaging of Wallerian degeneration in rat spinal cord after dorsal root axotomy. *J Neurosci*. 2009;29(10):3160-71.
 49. Kozłowski P, Raj D, Liu J, Lam C, Yung AC, Tetzlaff W. Characterizing white matter damage in rat spinal cord with quantitative MRI and histology. *J Neurotrauma*. 2008;25(6):653-76.
 50. Farrell JA, Zhang J, Jones MV, Deboy CA, Hoffman PN, Landman BA, et al. q-space and conventional diffusion imaging of axon and myelin damage in the rat spinal cord after axotomy. *Magn Reson Med*. 2010;63(5):1323-35.
 51. Pallini R, Fernandez E, Sbriccoli A. Retrograde degeneration of corticospinal axons following transection of the spinal cord in rats. A quantitative study with anterogradely transported horseradish peroxidase. *J Neurosurg*. 1988;68(1):124-8.
 52. Herrera JJ, Chacko T, Narayana PA. Histological correlation of diffusion tensor imaging metrics in experimental spinal cord injury. *J Neurosci Res*. 2008;86(2):443-47.
 53. Budde MD, Kim JH, Liang HF, Schmidt RE, Russell JH, Cross AH, et al. Toward accurate diagnosis of white matter pathology using diffusion tensor imaging. *Magn Reson Med*. 2007;57(4):688-95.
 54. Mongan PD, Peterson RE. Intravenous anesthetic alterations on the spinal-cord evoked response in swine. *Anesth Analg*. 1993;77(1):149-54.
 55. Rojas MJ, Navas JA, Rector DM. Evoked response potential markers for anesthetic and behavioral states. *Am J Physiol Regul Integr Comp Physiol*. 2006;291(1):R189-96.
 56. Oro J, Haghghi SS. Effects of altering core body temperature on somatosensory and motor evoked potentials in rats. *Spine (Phila Pa 1976)*. 1992;17(5):498-503.
 57. Nordwall A, Axelgaard J, Harada Y, Valencia P, McNeal DR, Brown JC. Spinal cord monitoring using evoked potentials recorded from feline vertebral bone. *Spine (Phila Pa 1976)*. 1979;4(6):486-94.
 58. Lueders H, Gurd A, Hahn J, Andrich J, Weiker G, Klem G. A new technique for intraoperative monitoring of spinal cord function: multichannel recording of spinal cord and subcortical evoked potentials. *Spine (Phila Pa 1976)*. 1982;7(2):110-5.
 59. Ellingson BM, Kurpad SN, Schmit BD. Characteristics of mid- to long-latency spinal somatosensory evoked potentials following spinal trauma in the rat. *J Neurotrauma*. 2008;25(11):1323-34.
 60. Ellingson BM, Kurpad SN, Schmit BD. Functional correlates of diffusion tensor imaging in spinal cord injury. *Biomed Sci Instrum*. 2008;44(1):28-33.
 61. Kim JH, Loy DN, Wang Q, Budde MD, Schmidt RE, Trinkaus K, et al. Diffusion tensor imaging at 3 hours after traumatic spinal cord injury predicts long-term locomotor recovery. *J Neurotrauma*. 2010;27(3):587-98.
 62. Ries M, Jones RA, Dousset V, Moonen CT. Diffusion tensor MRI of the spinal cord. *Magn Reson Med*. 2000;44(6):884-92.
 63. Clark CA, Barker GJ, Tofts PS. Magnetic resonance diffusion imaging of the human cervical spinal cord in vivo. *Magn Reson Med*. 1999;41(6):1269-73.
 64. Holder CA, Muthupillai R, Mukundan S, Jr., Eastwood JD, Hudgins PA. Diffusion-weighted MR imaging of the normal human spinal cord in vivo. *AJNR Am J Neuroradiol*. 2000;21(10):1799-806.
 65. Bammer R, Fazekas F, Augustin M, Simbrunner J, Strasser-Fuchs S, Seifert T, et al. Diffusion-weighted MR imaging of the spinal cord. *AJNR Am J Neuroradiol*. 2000;21(3):587-91.
 66. Nagayoshi K, Kimura S, Ochi M, Hayashi K, Okimoto T, Wakebe T, et al. Diffusion-weighted echo planar imaging of the normal human cervical spinal cord. *J Comput Assist Tomogr*. 2000;24(3):482-5.
 67. Ellingson BM, Ulmer JL, Kurpad SN, Schmit BD. Diffusion tensor MR imaging of the neurologically intact human spinal cord. *AJNR Am J Neuroradiol*. 2008;29(7):1279-84.
 68. Agosta F, Lagana M, Valsasina P, Sala S, Dall'Occchio L, Sormani MP, et al. Evidence for cervical cord tissue disorganization with aging by diffusion tensor MRI. *Neuroimage*. 2007;36(3):728-35.
 69. Mamata H, Jolesz FA, Maier SE. Apparent diffusion coefficient and fractional anisotropy in spinal cord: age and cervical spondylosis-related changes. *J Magn Reson Imaging*. 2005;22(1):38-43.
 70. Lindberg PG, Feydy A, Maier MA. White matter organization in cervical spinal cord relates differently to age and control of grip force in healthy subjects. *J Neurosci*. 2010;30(11):4102-9.
 71. Van Hecke W, Leemans A, Sijbers J, Vandervliet E, Van Goethem J, Parizel PM. A tracking-based diffusion tensor imaging segmentation method for the detection of diffusion-related changes of the cervical spinal cord with aging. *J Magn Reson Imaging*. 2008;27(5):978-91.
 72. Facon D, Ozanne A, Fillard P, Lepeintre J-F, Tournoux-Facon C, Ducreux D. MR Diffusion Tensor Imaging and Fiber Tracking in Spinal Cord Compression. *AJNR Am J Neuroradiol*. 2005;26(6):1587-94.
 73. Shanmuganathan K, Gullapalli RP, Zhuo J, Mirvis SE. Diffusion tensor MR imaging in cervical spine trauma. *AJNR Am J Neuroradiol*. 2008;29(4):655-9.
 74. Norenberg MD, Smith J, Marcillo A. The pathology of human spinal cord injury: defining the problems. *J Neurotrauma*. 2004;21(4):429-40.
 75. Vedantam A, Jirjis MB, Schmit BD, Budde MD, Ulmer JL, Wang MC, et al. Diffusion tensor imaging and tractography in brown-sequard syndrome. *Spinal Cord*. 2012;50(12):928-30.
 76. Endo T, Suzuki S, Utsunomiya A, Uenohara H, Tominaga T. Prediction of neurological

- recovery using apparent diffusion coefficient in cases of incomplete spinal cord injury. *Neurosurgery*. 2011;68(2):329-36.
77. Cheran S, Shanmuganathan K, Zhuo J, Mirvis SE, Aarabi B, Alexander MT, et al. Correlation of MR diffusion tensor imaging parameters with ASIA motor scores in hemorrhagic and nonhemorrhagic acute spinal cord injury. *Journal of Neurotrauma*. 2011;28(9):1881-92.
 78. El Masry WS, Tsubo M, Katoh S, El Milligui YH, Khan A. Validation of the American Spinal Injury Association (ASIA) motor score and the National Acute Spinal Cord Injury Study (NASCIS) motor score. *Spine (Phila Pa 1976)*. 1996;21(5):614-9.
 79. Lam T, Noonan VK, Eng JJ. A systematic review of functional ambulation outcome measures in spinal cord injury. *Spinal Cord*. 2008;46(4):246-54.
 80. Furlan JC, Noonan V, Singh A, Fehlings MG. Assessment of disability in patients with acute traumatic spinal cord injury: a systematic review of the literature. *J Neurotrauma*. 2011;28(8):1413-30.
 81. Totou MO, Keirstead HS. Spinal cord injury is accompanied by chronic progressive demyelination. *J Comp Neurol*. 2005;486(4):373-83.
 82. Bunge RP, Puckett WR, Becerra JL, Marcillo A, Quencer RM. Observations on the pathology of human spinal cord injury. A review and classification of 22 new cases with details from a case of chronic cord compression with extensive focal demyelination. *Adv Neurol*. 1993;59:75-89.
 83. Blight AR, Decrescito V. Morphometric analysis of experimental spinal cord injury in the cat: the relation of injury intensity to survival of myelinated axons. *Neuroscience*. 1986;19(1):321-41.
 84. Harrison BM, McDonald WI. Remyelination after transient experimental compression of the spinal cord. *Ann Neurol*. 1977;1(6):542-51.
 85. Potter K, Saifuddin A. Pictorial review: MRI of chronic spinal cord injury. *Br J Radiol*. 2003;76(905):347-52.
 86. Ellingson BM, Ulmer JL, Kurpad SN, Schmit BD. Diffusion tensor MR imaging in chronic spinal cord injury. *AJNR Am J Neuroradiol*. 2008;29(10):1976-82.
 87. Chang Y, Jung TD, Yoo DS, Hyun JK. Diffusion tensor imaging and fiber tractography of patients with cervical spinal cord injury. *J Neurotrauma*. 2010;27(11):2033-40.
 88. Marino RJ, Ditunno JF Jr, Donovan WH, Maynard F Jr. Neurologic recovery after traumatic spinal cord injury: data from the Model Spinal Cord Injury Systems. *Arch Phys Med Rehabil*. 1999;80(11):1391-6.
 89. Bauchet L, Lonjon N, Perrin FE, Gilbert C, Privat A, Fattal C. Strategies for spinal cord repair after injury: a review of the literature and information. *Ann Phys Rehabil Med*. 2009;52(4):330-51.
 90. Novikova LN, Novikov LN, Kellerth JO. Biopolymers and biodegradable smart implants for tissue regeneration after spinal cord injury. *Curr Opin Neurol*. 2003;16(6):711-5.
 91. McCormick WE, Steinmetz MP, Benzell EC. Cervical spondylotic myelopathy: make the difficult diagnosis, then refer for surgery. *Cleve Clin J Med*. 2003;70(10):899-904.
 92. Baptiste DC, Fehlings MG. Pathophysiology of cervical myelopathy. *Spine J*. 2006;6(Suppl 6):190S-97S.
 93. Baron EM, Young WF. Cervical spondylotic myelopathy: a brief review of its pathophysiology, clinical course, and diagnosis. *Neurosurgery*. 2007;60(1 Suppl 1):S35-41.
 94. Al-Mefty O, Harkey HL, Marawi I, Haines DE, Peeler DF, Wilner HI, et al. Experimental chronic compressive cervical myelopathy. *J Neurosurg*. 1993;79(4):550-61.
 95. Bruce JC, Oatway MA, Weaver LC. Chronic pain after clip-compression injury of the rat spinal cord. *Exp Neurol*. 2002;178(1):33-48.
 96. Kim P, Haisa T, Kawamoto T, Kirino T, Wakai S. Delayed myelopathy induced by chronic compression in the rat spinal cord. *Ann Neurol*. 2004;55(4):503-11.
 97. Hu Y, Wen CY, Li TH, Cheung MM, Wu EX, Luk KD. Somatosensory-evoked potentials as an indicator for the extent of ultrastructural damage of the spinal cord after chronic compressive injuries in a rat model. *Clin Neurophysiol*. 2011;122(7):1440-7.
 98. In vivo diffusion tensor imaging of chronic spinal cord compression in rat model. *Engineering in Medicine and Biology Society, 2009. EMBC 2009*. In: Annual International Conference of the IEEE; 2009 3-6 Sept. 2009.
 99. Song T, Chen WJ, Yang B, Zhao HP, Huang JW, Cai MJ, et al. Diffusion tensor imaging in the cervical spinal cord. *Eur Spine J*. 2011;20(3):422-8.
 100. Kara B, Celik A, Karadereler S, Ulusoy L, Ganiyusufoglu K, Onat L, et al. The role of DTI in early detection of cervical spondylotic myelopathy: a preliminary study with 3-T MRI. *Neuroradiology*. 2011;53(8):609-16.
 101. Budzik JF, Balbi V, Le Thuc V, Duhamel A, Assaker R, Cotten A. Diffusion tensor imaging and fibre tracking in cervical spondylotic myelopathy. *Eur Radiol*. 2011;21(2):426-33.
 102. Ohshio I, Hatayama A, Kaneda K, Takahara M, Nagashima K. Correlation between histopathologic features and magnetic resonance images of spinal cord lesions. *Spine (Phila Pa 1976)*. 1993;18(9):1140-9.
 103. Lee JW, Kim JH, Park JB, Park KW, Yeom JS, Lee GY, et al. Diffusion tensor imaging and fiber tractography in cervical compressive myelopathy: preliminary results. *Skeletal Radiol*. 2011;40(12):1543-51.
 104. Jones JG, Cen SY, Lebel RM, Hsieh PC, Law M. Diffusion Tensor Imaging Correlates with the Clinical Assessment of Disease Severity in Cervical Spondylotic Myelopathy and Predicts Outcome following Surgery. *AJNR. Am J Neuroradiol*. 2013;34(2):471-8
 105. Uda T, Takami T, Tsuyuguchi N, Sakamoto S, Yamagata T, Ikeda H, et al. Assessment of Cervical Spondylotic Myelopathy using Diffusion Tensor MRI Parameter at 3.0 Tesla. *Spine (Phila Pa 1976)*. 2013;38(5):407-14.
 106. Kerkovský M, Bednarik J, Dušek L, Spráková-Puková A, Urbánek I, Mechl M, et al. Magnetic resonance diffusion tensor imaging in patients with cervical spondylotic spinal cord compression: correlations between clinical and electrophysiological findings. *Spine (Phila Pa 1976)*. 2012;37(1):48-56.
 107. Wiesmann UC, Symms MR, Parker GJ, Clark CA, Lemieux L, Barker GJ. Diffusion tensor imaging demonstrates deviation of fibres in normal appearing white matter adjacent to a brain tumour. *J Neurol Neurosurg Psychiatry*. 2000;68(4):501-3.
 108. Price S, Burnet N, Donovan T, Green H, Pešić A, Antoun N, et al. Diffusion tensor imaging of brain tumours at 3 T: A potential tool for assessing white matter tract invasion? *Clin Radiol*. 2003;58(6):455-62.
 109. Witwer BP, Moftakhar R, Hasan KM, Deshmukh P, Haughton V, Field A, et al. Diffusion-tensor imaging of white matter tracts in patients with cerebral neoplasm. *J Neurosurg*. 2002;97(3):568-75.
 110. Vargas MI, Delavelle J, Jlassi H, Rilliet B, Viallon M, Becker CD, et al. Clinical applications of diffusion tensor tractography of the spinal cord. *Neuroradiology*. 2008;50(1):25-9.
 111. Ducreux D, Lepeintre JF, Fillard P, Loureiro C, Tadie M, Lasjaunias P. MR diffusion tensor imaging and fiber tracking in 5 spinal cord astrocytomas. *AJNR. Am J Neuroradiol*. 2006;27(1):214-6.
 112. Setzer M, Murtagh RD, Murtagh FR, Eleraky M, Jain S, Marquardt G, et al. Diffusion tensor imaging tractography in patients with intramedullary tumors: comparison with intraoperative findings and value for prediction of tumor resectability. *J Neurosurg Spine*. 2010;13(3):371-80.
 113. Larsson HB, Thomsen C, Frederiksen J, Stubgaard M, Henriksen O. In vivo magnetic resonance diffusion measurement in the brain of patients with multiple sclerosis. *Magn Reson Imaging*. 1992;10(1):7-12.
 114. Werring DJ, Clark CA, Barker GJ, Thompson AJ, Miller DH. Diffusion tensor imaging of lesions and normal-appearing white matter in multiple sclerosis. *Neurology*. 1999;52(8):1626-32.
 115. van Hecke W, Nagels G, Emonds G, Leemans A, Sijbers J, van Goethem J, et al. A diffusion tensor imaging group study of the spinal cord in multiple sclerosis patients with and without T2 spinal cord lesions. *J Magn Reson Imaging*. 2009;30(1):25-34.
 116. Roser F, Ebner F, Maier G, Tatagiba M, Nägele T, Klose U. Fractional Anisotropy Levels Derived From Diffusion Tensor Imaging in Cervical Syringomyelia. *Neurosurgery*. 2010;67(4):901-5.
 117. Hatem SM, Attal N, Ducreux D, Gautron M, Parker F, Flaghki L, et al. Assessment of spinal somatosensory systems with diffusion tensor imaging in syringomyelia. *J Neurol Neurosurg Psychiatry*. 2009;80(12):1350-6.
 118. Renoux J, Facon D, Fillard P, Huynh I, Lasjaunias P, Ducreux D. MR diffusion tensor imaging and fiber tracking in inflammatory diseases of the spinal cord. *Am J Neuroradiol*. 2006;27(9):1947-51.
 119. Thurnher MM, Law M. Diffusion-weighted imaging, diffusion-tensor imaging, and fiber tractography of the spinal cord. *Magn Reson Imaging Clin N Am*. 2009;17(2):225-44.
 120. Bastin ME, Armitage PA, Marshall I. A theoretical study of the effect of experimental noise on the measurement of anisotropy in diffusion imaging. *Magn Reson Imaging*. 1998;16(7):773-85.
 121. Carballido-Gamio J, Xu D, Newitt D, Han ET, Vigneron DB, Majumdar S. Single-shot fast spin-echo diffusion tensor imaging of the lumbar spine at 1.5 and 3 T. *Magn Reson Imaging*. 2007;25(5):665-70.