

Doi:<http://dx.doi.org/10.1590/1809-4430-Eng.Agric.v38n2p188-196/2018>

SPATIAL VARIABILITY OF THE WATER DEPTH APPLIED BY FIXED SPRINKLER IRRIGATION SYSTEMS

Jorge T. Tamagi¹, Miguel A. Uribe-Opazo^{2*}, Marcio A. Vilas Boas¹, Jerry A. Johann¹,
Luciana P. C. Guedes¹

^{2*} Corresponding author. Western Paraná State University / Cascavel - Paraná, Brazil. E-mail: miguel.opazo@unioeste.br

KEYWORDS

compensating sprinklers, non-compensating sprinklers, spatial dependence.

ABSTRACT

The uniformity of water application is an important factor in the evaluation of sprinkler irrigation systems. This uniformity depends on the type of sprinkler and its operating conditions, such as the arrangement and spacing between the sprinklers in the area; velocity and wind direction during the period of water application and the pressure variation of the irrigation system. The objective of this study was to model, analyze and compare the structure of spatial dependence, as well as the spatial variability of the water depths applied by a sprinkler irrigation system with compensating and non-compensating sprinklers, using geostatistical methods and measurements of accuracy or similarity between the applied water depth maps. The experiment was carried out in an agricultural area, in the city of Cascavel-Paraná-Brazil. A total area of 10 x 10 m was used, with 04 compensating and 04 non-compensating sprinklers installed at a height of 1.5 m. For each type of sprinkler, water levels were measured in 100 collectors spaced 1 x 1 m in the study area in 32 trials. On each test sprinkling was carried out for one hour. The conditions of wind, temperature and air humidity were evaluated at the beginning of each test and at 10-minute intervals with a climatological station. As the geostatistical analysis showed the existence of directional trends, the coordinates were incorporated as covariates to the linear spatial model in the study of the spatial dependence of the average depth of the irrigation water for the two types of sprinklers. The spatial dependence structure that best fits the data when using the compensating sprinklers was the Gaussian model and when the non-compensating sprinklers were used, it was the exponential model. The spatial variability maps of average irrigation water depth (mm) of the trials, obtained by universal kriging, revealed that for both sprinklers there was an increase in the mean level average values in the northwest-southeast direction (135° in the azimuth system) in the area under study, influenced by wind direction and velocity during the execution of the experiment.

INTRODUCTION

Brazil is one of the countries with the largest reserves of fresh water on the planet (12% of the world total). Water resources have significant importance in the development of various economic activities, especially for the agribusiness sector that accounts for 23% of the Gross Domestic Product (GDP) of Brazil.

Irrigation is an ancient technique that aims to provide the necessary amount of water to the plant at the moment it needs and in the exact amount. Since it is properly used, it has many benefits, such as increased

productivity, job creation, and profitable growth of rural producers (Oliveira et al., 2011; Souza et al., 2011).

Currently, Brazil is one of the ten countries with the largest irrigated area on the planet. According to the National Water Agency (ANA, 2017) the country has 6.95 million hectares using different irrigation techniques and can expand this area by 45% by 2030.

Sprinkler irrigation simulates an artificial rain in which a sprinkler expels water into the air, which by aerodynamic resistance turns into small droplets of water that fall on the soil and plants. Its main systems are the conventional, central pivot and self-propelled. According

¹ Western Paraná State University / Cascavel - Paraná, Brazil.

Received in: 8-15-2016

Accepted in: 11-26-2017

to Martins et al. (2008), is one of the most used methods in the last decades in Brazil, since, of the total area of irrigated vegetables, more than 90% are irrigated by sprinkling (Fravet & Cruz, 2007), which has contributed to increase both the irrigated area, as well as, the number of companies manufacturing irrigation equipment (Rocha et al., 2005).

This information only illustrates the relevance that should be given to studies involving the evaluation of the distribution uniformity of the applied water levels depths of irrigation systems, considering that, the irrigation sector is the largest and most dynamic consumptive water use from the springs in Brazil, removing about 969 thousand liters of water per second, corresponding to 46% of all total water consumption (ANA, 2017).

According to Frizzone et al. (2011), the uniformity coefficients of water distribution have been the main evaluation method of an irrigation system, since they express, in a specific way, the variability of the irrigated water depth at the soil surface. This allows identifying if the planning and operation of the system has been carried out correctly, in view of, the aspects related to sprinkler spacing, sprinkler type and the system operating pressure.

However, several surveys (Pair et al., 1969; Nogueira & Souza, 1987; Costa & Castro, 1993; Alves & Castro, 1995; Justi et al., 2010) have shown that the uniformity of water application is also affected by the wind velocity, because the wind causes a change in the distribution profile of the sprinkler and drags the droplets of smaller diameter. Generally, the higher the wind speed, the lower the coefficients of uniformity values. According to Bernardo (2006), the wind velocity less than 2.0 m s^{-1} does not generally affect this uniformity of water application, making it less significant when the spacing between sprinklers decreases.

Although, to visualize the spatial variability of the water depth applied by the irrigation system, is an important way to identify possible solutions to improve the uniformity of application. Thus, geostatistics is one of the most important and used methods of spatial analysis to study random variables by means of probabilistic models, when it has the spatial location of the data (Uribe-Opazo et al., 2012; Robinson et al., 2013; Wendpap et al., 2015)

The objective of this study was to model, analyze and compare the structure of spatial dependence, as well as, the spatial variability of water depths applied by a sprinkler irrigation system with compensating and non-compensating sprinklers, using geostatistical methods and measures of accuracy or similarity between the applied water depth maps.

MATERIAL AND METHODS

Location of the survey, sampling grid and arrangement of the collectors or pluviometer

The experiment was carried out in the farm called "Floricultura & Mercado de Plantas Cascavel", north region of the city of Cascavel-Paraná-Brazil, at $24^{\circ} 55' 04''$ South latitude, $53^{\circ} 28' 31''$ West longitude and altitude of 785 m. The climate of the region is temperate, mesothermic, super humid, sub-tropical, with average air temperature in January of 28.6°C , and in July of 11.2°C , with frost occurrence. In addition, in Cascavel, the average

annual precipitation is equal to 1940 mm and the annual average air relative humidity is around 75% (Tamagi et al., 2016).

The mounted sprinkler system had the following equipment: 5 m^3 ; water pump Sonar brand of 2 HP with 60 m.w.c. and $Q = 4.5 \text{ m}^3 \text{ h}^{-1}$; 04 manometers of 0-10.5 Bar; filter; hydrometer; valves; tubing of black plastic lines of one inch in diameter; 04 compensating sprinklers and 04 non-compensating (blue nozzle, super 10, from NaanDan manufacturer) installed at 1.5 m height; 100 collectors (with 80 mm in diameter and 102 mm in height, from the Fabrimar brand) fixed to metal rods, 70 cm from the soil surface; and a portable weather station *La Crosse Technology* to record the Agrometeorological conditions at the sprinkler test site.

Firstly, these equipments were installed in the total area of $10 \times 10 \text{ m}$ (Figure 1) with the 04 compensating sprinklers and the 100 collectors distributed equidistantly in a $1.0 \times 1.0 \text{ m}$ grid (Figure 1). The collector lines covered a distance greater than or equal to the emitter's jet range, which operated for 1 hour, in each of the 32 tests performed. For each test, the water volume of the collectors was measured by means of a graduated measuring cylinder, following the NBR ISO 7749-2 standard - Agricultural irrigation equipment - Rotating sprinklers and Part 2: Uniformity of distribution and test methods (ABNT, 2000). After completing the 32 tests with the compensating sprinklers, the same procedure was performed with the 04 non-compensating sprinklers. For each type of sprinkler used, the average value of the water depth (mm) of the 32 tests was considered as variable for the analysis of spatial dependence."

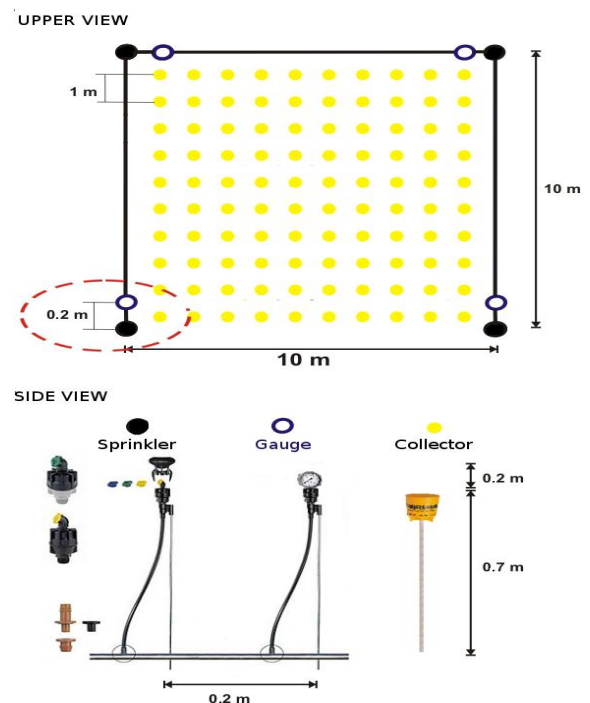


FIGURE 1. Layout of the arrangement of the collectors and sprinklers used in the experiment.

The agrometeorological variables, wind speed (WS) (m s^{-1}), temperature (T) ($^{\circ}\text{C}$) and relative humidity (RH) (%) were obtained, respectively, by a thermometer, a thermohygrometer and a totalizer anemometer, installed at a height of 2 m in relation to the soil surface. The reading

of these instruments was made, at the beginning of each sprinkler test and, then every 10 minutes until one hour of each test was completed.

For each type of sprinkler and for each of the variable (agrometeorological variables and the average water depth), a descriptive statistical analysis was carried out, whose objective was to describe briefly and compare the samples results obtained in all variables, among the types of sprinklers used. In order to verify if the agrometeorological conditions were statistically equal between the tests performed with compensating and non-compensating sprinklers, the t-Student hypothesis test was applied for independent samples, with a level of 5% of significance. Thus, if p-value < 0.05 ($\alpha=5\%$) then there is significant statistical difference for each of the agrometeorological monitor variables; otherwise, the difference is not significant at 5% probability. The same hypothesis test was also applied to verify if the average of the water depths applied with the non-compensating and compensating sprinklers differed during the experiments.

Spatial analysis

The spatial dependence structure of the average water depth was also modeled for each type of sprinkler using geostatistical methods. To perform these analyzes, we considered a Gaussian stochastic process $\mathbf{Z} = \{Z(\mathbf{s}), \mathbf{s} \in S\}$, on what $\mathbf{s} = (x, y)^T$ is the vector that represents a certain location in the study area, where $S \subset \mathcal{R}^2$ and \mathcal{R}^2 is the two-dimensional Euclidean space. Suppose the data $Z(\mathbf{s}) = \{Z(\mathbf{s}_1), \dots, Z(\mathbf{s}_n)\}$ of each process are recorded in known spatial locations \mathbf{s}_i ($i = 1, \dots, n$), and generated by the model $Z(\mathbf{s}_i) = \mu(\mathbf{s}_i) + e(\mathbf{s}_i)$ (Uribe-Opazo et al., 2012).

In this model, the mean $\mu(\mathbf{s}_i)$ is the deterministic term and $e(\mathbf{s}_i)$ is the stochastic term that depends on the spatial location in which $Z(\mathbf{s}_i)$ was gotten. It was assumed that the stochastic error $e(\mathbf{s}_i)$ has zero mean, that is, $E[e(\mathbf{s}_i)] = 0$, and that the variation between points in space is determined by a covariance function $Cov[e(\mathbf{s}_i), e(\mathbf{s}_u)] = C(\mathbf{s}_i, \mathbf{s}_u) = \sigma_{iu}$ (Oliver & Webster, 2014).

The Gaussian linear spatial model can be written, in matrix notation, by [eq. (1)]:

$$\mathbf{Z} = \mathbf{X}\boldsymbol{\beta} + \boldsymbol{\varepsilon}, \tag{1}$$

on that:

$\mu(\mathbf{s}) = \mathbf{X}\boldsymbol{\beta}$; \mathbf{X} is the matrix of the design $n \times p$; $\boldsymbol{\beta}$ is the vector $p \times 1$ of the unknown parameters associated with the deterministic term (Monego et al., 2015, Schemmer et al., 2017); $\boldsymbol{\varepsilon}$ is the vector of random errors $n \times 1$, with $E(\boldsymbol{\varepsilon}) = \mathbf{0}$ (null vector) and covariance matrix $\boldsymbol{\Sigma} = [(\sigma_{iu})]$. It was assumed that $\boldsymbol{\Sigma}$ is a non-singular definite positive matrix $n \times n$ and that \mathbf{Z} has a normal probability distribution n -varied with mean vector $\mathbf{X}\boldsymbol{\beta}$ and covariance matrix $\boldsymbol{\Sigma}$, this is, $\mathbf{Z} \sim N_n(\mathbf{X}\boldsymbol{\beta}, \boldsymbol{\Sigma})$ (De Bastiani et al., 2015).

The parametric form of the covariance matrix (Uribe-Opazo et al., 2012) be expressed by [eq. (2)]:

$$\boldsymbol{\Sigma} = \varphi_1 \mathbf{I}_n + \varphi_2 \mathbf{R}(\varphi_3) \tag{2}$$

on that,

φ_1 is the nugget effect or variance error; \mathbf{I}_n is an identity matrix with dimension $n \times n$; φ_2 is the dispersion

covariance or variance; φ_3 is a function of the practical range (a) of the model; $\mathbf{R}(\varphi_3)$, is a matrix, with dimension $n \times n$, that is a function of φ_3 . Being that $\mathbf{R}(\varphi_3) = [(r_{iu})]$ is a symmetric matrix with its elements equal to: $r_{ii} = 1$, to $i = 1, \dots, n$, $r_{iu} = \varphi_2^{-1} C(\mathbf{s}_i, \mathbf{s}_u)$ to $\varphi_2 \neq 0$ and $i \neq u = 1, \dots, n$, on that $C(\mathbf{s}_i, \mathbf{s}_u) = C(h_{iu})$ is the covariance value between $Z(\mathbf{s}_i)$ and $Z(\mathbf{s}_u)$; and $r_{iu} = 0$ to $\varphi_2 = 0$, $i \neq u = 1, \dots, n$. So, r_{iu} and $C(\mathbf{s}_i, \mathbf{s}_u)$ depend on Euclidean distance $h_{iu} = \|\mathbf{s}_i - \mathbf{s}_u\|$ between the points \mathbf{s}_i and \mathbf{s}_u .

The parametric form of the covariance matrix $\boldsymbol{\Sigma}$ given in [eq. (2)], occurs for several stationary and isotropic processes (Guedes et al., 2013), in which the covariance $C(\mathbf{s}_i, \mathbf{s}_u) = C(h_{iu})$ can be expressed by the Matern functions' family, given by [eq. (3)]:

$$C(h_{iu}) = \frac{\varphi_2}{2^{k-1} \Gamma(k)} \left(\frac{h_{iu}}{\varphi_3} \right)^k K_k \left(\frac{h_{iu}}{\varphi_3} \right), \text{ if } h_{iu} > 0 \text{ and}$$

$$C(h_{iu}) = \varphi_1 + \varphi_2, \text{ if } h_{iu} = 0 \tag{3}$$

on that:

$\Gamma(k)$ is the gamma function, $K_k(t) = (1/2) \int_0^\infty x^{k-1} \exp[-t(w+w^{-1})/2] dw$ is the modified Bessel function of third type, order k , with $k > 0$ fixed. When $k = 1/2$ and $k \rightarrow \infty$, this function [eq. (3)] corresponds to the exponential and Gaussian covariance functions, respectively.

In covariance functions $C(h_{iu})$, the variance of \mathbf{Z} is $C(0) = \varphi_1 + \varphi_2$ and is called the *sill*, and semivariance is defined as $\gamma(h) = C(0) - C(h)$ (Cressie, 2015).

The presence of directional tendency and anisotropy was evaluated initially by means of the Post-plot graph. In this graph, the values of the average depth in each type of sprinkler are classified according to the quartiles (the larger the range of values, the darker the color of the point in the gray scale).

The spatial dependence structure between the sample elements and the presence of anisotropy was identified through the construction of experimental semivariograms (omnidirectional and directional), using the classical Matheron estimator [eq. (4)] to calculate the values of the semivariance as a function of distance (Grego et al., 2011).

$$\hat{\gamma}(\mathbf{h}) = \frac{1}{2N(\mathbf{h})} \cdot \sum_{i=1}^{N(\mathbf{h})} [Z(\mathbf{s}_i + \mathbf{h}) - Z(\mathbf{s}_i)]^2 \tag{4}$$

on that:

$Z(\mathbf{s}_i + \mathbf{h}), Z(\mathbf{s}_i)$ is the regionalized variable in the positions $\mathbf{s}_i + \mathbf{h}$ and \mathbf{s}_i , respectively and $N(\mathbf{h})$ is the number of pairs of sampling points separated by vectors \mathbf{h} , such that $\|\mathbf{h}\| = h$ is the Euclidean distance between points (*lag*) (Oliver & Webster, 2014).

To estimate the unknown parameter vector $\boldsymbol{\theta} = (\boldsymbol{\beta}^T, \boldsymbol{\varphi}^T)^T$, which defines the Gaussian linear spatial model [eq. (1)] and the covariance function, it was used the maximum likelihood method (ML). And it was

considered $\mu(s_i) = \beta_0 + \beta_1 x_i + \beta_2 y_i$ and $\varphi = (\varphi_1, \varphi_2, \varphi_3)^T$ for a non-stationary and isotropic process, with a directional tendency in the x and y coordinates, where $\beta = (\beta_0, \beta_1, \beta_2)^T$ (De Bastiani et al., 2015). Considering the stochastic process $Z = (Z(s_1), \dots, Z(s_n))^T$, on that $Z \sim N_n(X\beta, \Sigma)$, the ML estimation method consists in determining which is the estimated vector of θ [eq. (5)] which maximizes the logarithm of the likelihood function.

$$l(\theta) = \frac{n}{2} \log(2\pi) - \frac{1}{2} \log |\Sigma| - \frac{1}{2} (Z - X\beta)^T \Sigma^{-1} (Z - X\beta) \quad (5)$$

In order to choose the model that best fits the data; we used the cross-validation technique and the Akaike criterion (Faraco et al., 2008; Lu et al. 2012; Robinson et al., 2013).

After the estimation of the parameters of the geostatistical model by the maximum likelihood method, the average values of the water depth applied by sprinkler irrigation in non-sampled locations were estimated using the interpolator called universal kriging, used for processes in which the deterministic term of the Gaussian spatial linear model is not constant. By means of this spatial estimation, the maps of the spatial variability of the

average water depth applied by sprinkler irrigation in the study area were elaborated.

The maps of the spatial variability of the average water depth were compared by the accuracy or similarity measures obtained by the error matrix: global accuracy (GA), Kappa concordance index (K) and Tau concordance index (T) (De Bastiani et al., 2012).

The software R (R Development Core Team, 2016) and the geoR module (Ribeiro Jr. & Diggle, 2016) were used for the study of the spatial dependence of the data and the construction of interpolated maps to visualize the spatial variability of the average water depth for each one of the sprinklers.

RESULTS AND DISCUSSIONS

Analysis of the Agrometeorological variables

For each of the 32 tests and for each type of sprinkler (compensating and non-compensating) were realized 7 measurements of the agrometeorological variables (wind speed (WS) [m s^{-1}], air temperature (T) [$^{\circ}\text{C}$], air relative humidity (RH) [%]), totaling 224 measurements, which are synthesized by the descriptive statistics in Table 1.

TABLE 1. Descriptive analysis of the agrometeorological variables: wind speed (WS), temperature (T) and relative humidity (RH), obtained during the 32 tests with compensating sprinklers and the 32 tests with non-compensating sprinklers.

Statistics	Compensating Sprinklers			Non-compensating Sprinklers		
	WS (m s^{-1})	T ($^{\circ}\text{C}$)	RH (%)	WS (m s^{-1})	T ($^{\circ}\text{C}$)	RH (%)
Minimum	0.16	21.09	11.99	0.00	21.09	29.00
Q ₁	1.28	27.90	14.98	1.18	28.90	39.32
Average	2.22	30.62	16.42	2.23	31.14	46.48
Median	2.20	30.81	16.50	2.20	30.84	47.50
Q ₃	2.93	34.43	17.88	2.94	34.49	55.21
Maximum	4.67	3.71	20.63	4.67	38.71	57.86
SD	1.06	4.15	1.98	1.20	3.78	1.51
CV(%)	47.59	13.54	12.05	56.61	12.13	3.25
p-value	0.925 ^{NS}	0.166 ^{NS}	0.000*			

Q₁: first quartile; Q₃: third quartile; CV: coefficient of variation; SD: standard deviation; p-value: Student t-Test; NS: not significant; * significant at 5% probability.

It was found that wind speed and air temperature (Table 1) were statistically similar to 5% of significant (as p-value > 0.05) during the execution of the experiment for both types of sprinklers used (compensating and non-compensating). However, while the wind speed showed high dispersion (CV > 30%) (Gomes, 2000) during the tests, with both sprinklers (Table 1), the same did not occur with the temperature of the air in which the dispersion was (CV ≤ 30%), which is explained considering that during the execution of the experiments, the average, minimum and maximum air temperatures were around 30.88 $^{\circ}\text{C}$; 21.09 $^{\circ}\text{C}$ and 38.71 $^{\circ}\text{C}$, respectively. However, the agrometeorological variable RH had a statistically significant difference (p-value < 0.05) between the experiments with the two types of sprinklers, with high homogeneity (Table 1) for tests performed with non-compensating sprinklers (CV = 3.25 %) and low dispersion (CV = 12.05%) for the tests with the compensating sprinklers.

The similarity of most agrometeorological conditions, especially wind speed, among the experiments performed with the two types of sprinklers are important data for the analysis of the distribution of the water depth during irrigation. Research by Justi et al. (2010), Faria et al. (2012), and Oliveira et al. (2012) report that higher wind velocities can affect water jets as well as their direction, providing distortions regarding the uniformity of water distribution in the soil.

For Bernardo (2006), when wind speed is less than 2.0 m s^{-1} it does not affect the uniformity of water application. It also adds that the wind effect becomes less significant when the spacing between sprinklers decreases. As the wind speed varied between 0 and 4.67 m s^{-1} during the experiments (Table 1), with a mean of 2.22 and 2.23 m s^{-1} , respectively, for the compensating and non-compensating sprinklers, the statistical assumptions that these sample means were significantly greater than 2.0 m s^{-1} . As by the Student's t-test, single sample, the p-values were 0.002 (compensating) and 0.001 (non-compensating) it was verified that in fact the wind

velocities were greater than 2.0 ms^{-1} (Bernardo, 2006), which may indicate that the wind speed may have influenced the uniformity of distribution of the water depth in the experiments.

Analysis of the variables of the average irrigation water depths by sprinkling of the 100 collectors in the 32 trials

The descriptive statistics of the water depth applied by the compensating sprinklers (ACS, i.e., which stands for the “average” water “depth” obtained by the use of the

“compensating” sprinkler) and non-compensating sprinklers (ANCS, i.e. the abbreviation “average” water “depth” obtained by the use of the “no compensating” sprinkler) are shown in Table 2. For each type of sprinkler, there is little dispersion and homogeneity of the values of the average water depth in relation to their mean values ($CV < 30\%$) (Gomes, 2000). Although some similarity was observed in the sample mean values, there were significant differences between the sprinklers in relation to the average water depth applied at 5% probability.

TABLE 2. Exploratory analysis of the variable average water depth (mm) of irrigation by sprinkler from compensating sprinklers (ACS) and non-compensating sprinkler (ANCS).

Sprinkler	Minimum	Q ₁	Median	Average	Q ₃	Maximum	SD	CV (%)
ANCS	2.22	3.07	3.38	3.36a	3.69	4.06	0.39	11.70
ACS	2.49	2.81	2.93	2.97b	3.06	3.79	0.29	9.72

Q₁: first quartile; Q₃: third quartile; C.V: coefficient of variation; SD: standard deviation; different letters indicate significant mean differences between sprinkler types (Student t-Test, 5% significance).

The Post-plot graphs (Figure 2) illustrate the average values of the irrigated water depth obtained in each of the 100 collectors for the non-compensating (Figure 2a) and compensating sprinklers (Figure 2b). For each type of sprinkler, a directional tendency (Figure 2) of the average irrigation water depth in the direction of 135° in the azimuth system (northwest-southeast) was observed. This directional trend was also confirmed for the sprinkler types, due to the existence of a significant linear association, at 5% probability, between the values of the average irrigation water depth, with the coordinates of the X and Y axes of the area, estimated by the Pearson linear coefficient (Table 3).

This can be explained, because according to Souza et al. (2013) the dominant direction of the winds in the region of Cascavel/PR is northwest-southeast (NE).

Shull & Dylla (1976), observing the effects of wind speed on the water distribution in a high pressure sprinkler, concluded that increasing wind speed increased the jet’s wind direction, shortened it and narrowed the range in the normal direction to the direction of the wind, causing a decrease in wet diameter.

In addition, it was observed for ACS that the discrepant points correspond to the highest average depth values and are located in the southeast region of the study area (Figure 2b).

TABLE 3. Pearson’s linear correlation coefficient of the average irrigation water depth (mm) with compensating (ACS) and non-compensating sprinklers (ANCS), with the geographical coordinates of the axis-X and the axis-Y.

Pearson’s linear correlation	ANCS	ACS
Axis-X	0.5786*	0.5623*
Axis-Y	-0.6889*	-0.3693*

*: indicates significant linear correlation (p-value <0.05) at 5% probability.

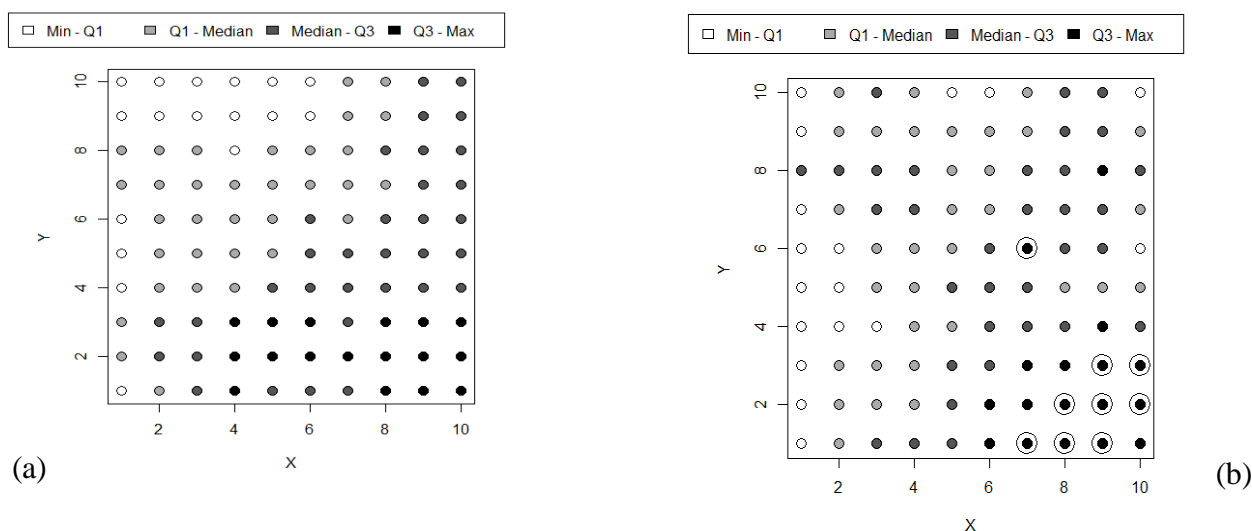


FIGURE 2. Post-plot Graphic of the average irrigation water depth (mm) with non-compensating (a) and (b) compensating sprinklers. Circulated points represent discrepant values in the one-dimensional analysis.

As the presence of the directional tendency influences the assumption of stationarity of the stochastic process in the geostatistical modeling, this was incorporated to the study of spatial dependence of the average irrigation water depth, considering that the mean of the stochastic process is explained by means of a linear regression model, where the coordinates of the X and Y axes are the covariates (Santos et al., 2011; Monego et al., 2015).

The estimated values for the spatial linear model that describes the spatial dependence structure of the average irrigation water depth using these sprinkler systems are presented in Table 4. The best predicted model for the covariance function was the Gaussian (with nugget effect $\hat{\phi}_1 = 0$, sill $\hat{\phi}_1 + \hat{\phi}_2 = 0.057$ and practical range $a = 13.81$ m), when the compensating sprinkler was used, and the exponential model (with nugget effect

$\hat{\phi}_1 = 0.007$, sill $\hat{\phi}_1 + \hat{\phi}_2 = 0.06$ and practical range $a = 3.8$ m), when the non-compensating sprinkler was used. The estimated values for relative nugget effect $RNE = 100\hat{\phi}_1/(\hat{\phi}_1 + \hat{\phi}_2)$ indicated that there is a strong spatial dependence of the variable average water depth for the two types of sprinklers used ($RNE \leq 25\%$) (Cambardella et al., 1994). It can be observed that the variables average water depths obtained by the use of the two types of sprinklers presented similar estimates of nugget effect and contribution. However, they presented a significant difference in the estimated values of the practical range for the average irrigation water depth, being 3.80 m for the compensating sprinklers and 13.31 m for the non-compensating sprinklers. Thus, it is observed that the radius of spatial dependence for the average irrigation water depth is higher in the non-compensating sprinkler.

TABLE 4. Estimated values for the parameters of the geostatistical models of the average irrigation water depth (mm) with compensating (ACS) and non-compensating (ANCS) sprinklers. In parentheses the standard deviations of the estimates of the parameters of the geostatistical model.

Variables	Model	$\hat{\beta}_0$	$\hat{\beta}_1$	$\hat{\beta}_2$	$\hat{\phi}_1$	$\hat{\phi}_2$	$\hat{\phi}_3$	\hat{a} (m)
ANCS	Exp.	2.965 (0.221)	0.113 (0.023)	-0.071 (0.023)	0.000 (0.003)	0.057 (0.029)	4.442 (2.837)	13.310
ACS	Gaus.	2.903 (0.171)	0.040 (0.020)	-0.042 (0.020)	0.007 (0.002)	0.053 (0.017)	2.1956 (0.249)	3.800

$\hat{\phi}_1$: estimated nugget effect; $\hat{\phi}_2$: estimated contribution; $\hat{\phi}_3$: estimation of an auxiliary parameter; $\hat{a} = g(\hat{\phi}_3)$: estimated practical range $\hat{\beta}_0$, $\hat{\beta}_1$; and $\hat{\beta}_2$: estimates of linear regression adjusted to estimate the average water depth (mm) as a function of the x and y coordinates; Exp.: exponential; and Gaus.: Gaussian.

In Table 4 it can be observed that while the compensating sprinklers $(\mu_{iADC}(s_i i) = 2.903 + 0.040x_{1i} - 0.042y_{1i})$ as non-compensating $(\mu_{iADNC}(s_i i) = 2.965 + 0.113x_{1i} - 0.071y_{1i})$, there was a direct influence of the X coordinate and an inverse influence of the Y coordinate in relation to the estimated values for the average irrigation water depth (mm). That is, the larger the value of the X coordinate and the smaller the value of the Y coordinate, the larger the average water depth (mm). This confirms the directional tendency in the 135° direction following the azimuth system, shown in Figure 2. However, we observe a greater influence of the Y coordinate for ANCS.

With the estimated models (Table 4) of the spatial dependence structure of the average irrigation water depth (mm), for the non-compensating sprinkler systems

(exponential structure, $\Sigma_{ADNC} = 0.057e^{-\left(\frac{h}{4.442}\right)}$) and compensating (Gaussian structure, $\Sigma_{ADC} = 0.007 * I_{100} + 0.053e^{-\left(\frac{h}{2.1956}\right)^2}$), the maps for the non-stationary variables, the average irrigation water depth of the non-compensating sprinkler - ANCS (Figure 3a) and the mean depth of the compensating sprinklers - ACS (Figure 3b) were calculated using universal kriging. For both types of the sprinklers, the average depth has increased in the northwest-southeast direction (135° in the azimuth system) in the study area, probably motivated by the direction of the dominant wind speed (Souza et al., 2013). This directional tendency was evidenced by the estimated geostatistical model (Table 4).

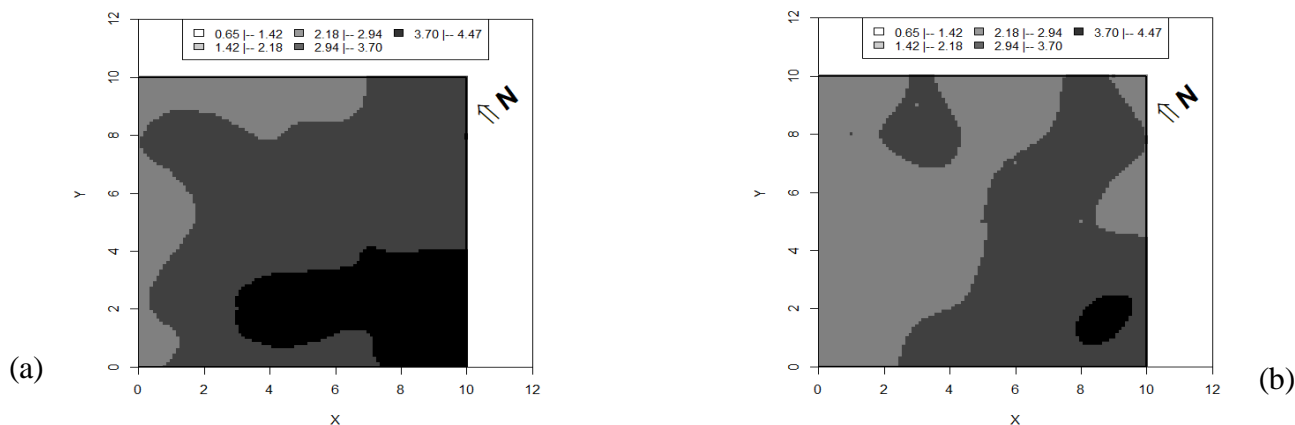


FIGURE 3. Map of the spatial variability of the average irrigation water depth (mm) by the non-compensating (a) and (b) compensating sprinklers.

In addition, for ANCS, estimated values ranged from 2.18 to 4.47 mm, whereas for ACS, values estimated in 98% of the area varied between 2.18 and 3.69 mm (Table 5) during the tests performed, which justifies the statistical difference of the irrigated medium depths between the two types of sprinklers (Table 2) and greater variability (CV = 11.70%) of the distribution for non-compensating sprinklers (Table 2).

TABLE 5. Percentages calculated by class for the average irrigation water depth (mm) of non-compensating and compensating sprinklers.

Variables	Classes of the average irrigation depth (mm)					Total
	0.65 – 1.41	1.42 – 2.17	2.18 – 2.93	2.94 – 3.69	3.70 – 4.47	
ANCS	0.00%	0.00%	18.79%	60.00%	21.21%	100%
ACS	0.00%	0.00%	50.87%	47.04%	2.09%	100%

The similarity measures (Table 6) for the comparison of the thematic maps (Figure 3) of the average irrigation water depth (ANCS and ACS) indicate low similarity (De Bastiani et al., 2012) between the maps using the two types of sprinklers ($\hat{GA} < 0.85$, $\hat{K} < 0.67$ and $\hat{T} < 0.67$). Thus, it is possible to deduce that there are differences in water depth between the two types of sprinklers, and that the compensating sprinklers presented better uniformity of water distribution, as already identified by Tamagi et al. (2016) by means of the uniformity coefficients (CUC, CUD and CUE).

TABLE 6. Estimated values of similarity measures between the average irrigation water depth (mm) maps of non-compensating sprinkler irrigation (ANCS) and compensating sprinkler (ACS).

Pair of Variables for comparison	Similarity Indexes		
	Global Accuracy (\hat{GA})	Kappa (\hat{K})	Tau (\hat{T})
ANCS – ACS	0.4568	0.1206	0.3210

CONCLUSIONS

Regarding the spatial dependence structure described by the estimated geostatistical models, there was a greater spatial dependence radius between the values of the average irrigation water depth when the non-compensating sprinkler was used.

The dominant direction of the winds in the region of Cascavel/PR, which is northwest-southeast (NE), and the wind speed, which on average was above 2 m s⁻¹ during the execution of the tests, the existence of a

directional tendency (north-south-east direction) of the mean irrigation water depth values applied for both compensating and non-compensating sprinklers. This can only be observed with the construction of maps of spatial variability of the applied water depths, which would not be possible, using only uniformity coefficients, which demonstrates the importance of using several tools for data analysis in the irrigation systems.

The compensating sprinklers applied a smaller amount of water (averaging 13.1%), with a greater spatial distribution of water (CV = 9.72%) than non-compensating sprinklers (CV = 11.70%). This is most evident by the low similarity obtained between the maps of spatial variability, considering that for the compensating sprinklers 98% of the area had a depth varying between 2.18 and 3.69 mm, whereas for non-compensating sprinklers only 78.8% of the area received this water depth.

It is concluded, therefore, the use of compensating sprinklers bring better results as the distribution of water depth in sprinkler irrigation systems.

ACKNOWLEDGMENTS

The authors would like to thank the CNPq, CAPES and the Araucária Foundation for the support to the development of this research.

REFERENCES

ANA - Agência Nacional de Águas (2017) Atlas Irrigação: uso da água na agricultura irrigada. Brasília, ANA. 86p.

- Alves AD, Castro PT (1995) Desempenho de um sistema de irrigação por aspersão tipo canhão hidráulico sob diferentes condições de velocidade de vento na região de Paracuru, CE. *Engenharia Rural* 6(2):79-84.
- ABNT - Associação Brasileira de Normas Técnicas (2000) Equipamentos de irrigação agrícola – Aspersores rotativos. Parte 2: Uniformidade de distribuição e métodos de ensaio NBR ISSO 7749 – 2. Rio de Janeiro, 6p.
- Bernardo S (2006) Manual de irrigação. Viçosa, UFV, 8ed. 625p.
- De Bastiani F, Uribe-Opazo MA, Dalposso GH (2012) Comparison of maps of spatial variability of soil resistance to penetration constructed with and without covariables using a spatial linear model. *Revista Engenharia Agrícola* 32(2):394-404. DOI: <http://dx.doi.org/10.1590/S0100-69162012000200019>.
- De Bastiani F, Cysneiros AHMD, Uribe-Opazo MA, Galea M (2015) Influence diagnostics in elliptical spatial linear models. *Test* 24(2):322–340. DOI: <http://dx.doi.org/10.1007/s11749-014-0409-z>.
- Cambardella CA, Moorman TB, Novak JM, Parkin TB, Karlen DL, Turco RF, Konopka AE (1994) Field scale variability of soil properties in Central Iowa soils. *Soil Science Society of America Journal* 58:1501-1511. DOI: <http://dx.doi.org/10.2136/sssaj1994.03615995005800050033x>.
- Costa SC, Castro PT (1993) Desempenho de um Sistema de irrigação autopropelido sob diferentes condições de velocidade de vento. *Engenharia Rural* 4:102-116.
- Cressie N (2015) *Statistics for Spatial Data*. New York: John Wiley. 928p.
- Faraco MA, Uribe-Opazo MA, Silva EAA, Johann JA, Borssoi JA (2008) Selection criteria of spatial variability models used in thematical maps of soil physical attributes and soybean yield. *Revista Brasileira de Ciência do Solo* 32(2):463-476. DOI: <http://dx.doi.org/10.1590/S0100-06832008000200001>
- Faria LC, Beskow S, Colombo A, Oliveira HFE (2012) Modelagem dos efeitos do vento na uniformidade da irrigação por aspersão: aspersores de tamanho médio. *Revista Brasileira de Engenharia Agrícola e Ambiental* 16(2):133-141. DOI: <http://dx.doi.org/10.1590/S1415-43662012000200002>
- Fravet AMM, Cruz RL (2007) Qualidade da água utilizada para irrigação de hortaliças na região de Botucatu-SP. *Irriga* 12(2):144-155.
- Frizzone JA, Rezende R, Freitas PSL (2011) Irrigação por aspersão v. 1. Maringa, Eduem. 271p.
- Gomes FP (2000) Curso de estatística experimental. Piracicaba, Degaspari, 14ed. 477p.
- Grego CR, Coelho RM, Vieira SR (2011) Critérios morfológicos e taxonômicos de latossolo e nitossolo validados por propriedades físicas mensuráveis analisadas em parte pela geoestatística. *Revista Brasileira de Ciência do Solo* 35(2):337-350. DOI: <http://dx.doi.org/10.1590/S0100-06832011000200005>
- Guedes LPC, Uribe-Opazo MA, Ribeiro JR PJ (2013) Influence of incorporating geometric anisotropy on the construction of thematic maps of simulated data and chemical attributes of soil. *Chilean Journal of Agricultural Research* 73(4):414-423. DOI: <http://dx.doi.org/10.4067/S0718-58392013000400013>
- Justi AL, Vilas Boas MA, Sampaio SC (2010) Índice de capacidade do processo na avaliação da irrigação por aspersão. *Engenharia Agrícola* 30(2):264-270. DOI: <http://dx.doi.org/10.1590/S0100-69162010000200008>
- Lu A, Wang X, Qin X, Wang K, Han P, Zhang S (2012) Multivariate and geostatistical analyses of the spatial distribution and origin of heavy metals in the agricultural soils in Shunyi, Beijing. *Science of the Total Environment* 425:66-74. DOI: <http://dx.doi.org/10.1016/j.scitotenv.2012.03.003>
- Martins JFS, Cunha US, Neves MB, Mackedanz V, Vinhas MR, Mattos MLT, Afonso APS (2008) Influência de períodos de supressão da irrigação por inundação da cultura do arroz (*Oryza sativa*) na população do gorgulho aquático *Oryzophagus oryzae* (Costa Lima) (Coleoptera: Curculionidae) e produção de grãos. In: Congresso Brasileiro de Entomologia. Uberlândia, Universidade Federal de Uberlândia. Resumos...
- Monego MD, Ribeiro JR PJ, Ramos, P (2015) Comparing the performance of geostatistical models with additional information from covariates for sewage plume characterization. *Environmental Science and Pollution Research* 22(8):5850-5863. DOI: <http://dx.doi.org/10.1007/s11356-014-3709-7>
- Nogueira LC, Souza F (1987) Avaliação de dois sistemas de irrigação por aspersão. II – Análise da uniformidade de distribuição. In: Congresso Brasileiro de Engenharia Agrícola. Jundiaí, Anais...
- Oliveira GA, Araújo WF, Cruz PLM, Silva WLM, Ferreira GB (2011) Resposta do feijão-caupi as lâminas de irrigação e as doses de fósforo no cerrado de Roraima. *Revista Ciência Agronômica* 42(4):872-882.
- Oliveira FE de, Colombo A, Faria LC, Prado GDO (2012) Efeitos da velocidade e da direção do vento na uniformidade de aplicação de água de sistemas autopropelidos. *Revista Engenharia Agrícola* 32(4):669-678. DOI: <http://dx.doi.org/10.1590/S0100-69162012000400006>
- Oliver MA, Webster RA (2014) A Tutorial guide to geostatistics: computing and modelling variograms and kriging. *Catena* 113:56-69. DOI: <https://doi.org/10.1016/j.catena.2013.09.006>
- Pair CH, Hinze WW, Reid C, Frost KR (1969) *Sprinkler irrigation*. Washington DC, Sprinkler Association. 444 p.
- R Development Core Team (2016) *R: A language and environment for statistical computing*. Vienna, R Foundation for Statistical Computing. Available in: <http://www.R-project.org>. Accessed: Feb 10, 2016.
- Ribeiro Jr. PJ, Diggle PJ (2016) geoR: A package for geostatistical analysis. *R-NEWS* 1:15-18.

- Robinson DP, Lloyd CD, Mckinley JM (2013) Increasing the accuracy of nitrogen dioxide (NO₂) pollution mapping using geographically weighted regression (GWR) and geostatistics. *International Journal of Applied Earth and Geoinformation* 21(1):374-383. DOI: <https://doi.org/10.1016/j.jag.2011.11.001>
- Rocha FA, Pereira GM, Rocha FS, Silva JO (2005) Análise da uniformidade de distribuição de água de um equipamento autopropelido. *Irriga* 10(1):96-106.
- Santos GR, Oliveira MS, Louzada JM, Santos AMRT (2011) Krigagem simples versus krigagem universal: qual o preditor é mais preciso? *Energia na Agricultura* 26(2):49-55. DOI: <http://dx.doi.org/10.17224/EnergAgric.2011v26n2p49-55>
- Schemmer, RC, Uribe-Opazo, MA, Galea, M, Assumpção, RAB (2017) Spatial Variability of soybean yield through a reparameterized t-student model. *Revista Engenharia Agrícola* 37(4):760-770. DOI: <http://dx.doi.org/10.1590/1809-4430/EnergAgric.v.37n4p760-770/2017>
- Shull H, Dylla AS (1976) Traveling boom sprinkler operation in Wind. *Transactions of the ASAE* 19(3):501-504.
- Souza AP, Pereira JBA, Silva LDB, Guerra JGM, Carvalho DF (2011) Evapotranspiração, coeficientes de cultivo e eficiência do uso da água da cultura do pimentão em diferentes sistemas de cultivo. *Acta Scientiarum Agronomy* 33(1):15-22. DOI: <http://dx.doi.org/10.4025/actasciagron.v33i1.5527>
- Souza R.C.M. de, Uribe-Opazo MA, Hosokawa RT, Johann, JA, Guedes LP (2013) Influence of the eucalyptus windbreaks aerodynamic system on the soybean crop in West of Parana, Brazil. *Journal of Food, Agriculture & Environment* 11(2): 930-935. Available in: <https://www.wflpublisher.com/Abstract/4472>.
- Tamagi JT, Uribe-Opazo MA, Johann JA, Vilas Boas MA (2016) Uniformidade de distribuição de água de irrigação por aspersores compensantes e não compensantes em diferentes alturas. *Irriga* 21(4):631-647. DOI: <http://dx.doi.org/10.15809/irriga.2016v21n4p631-647>
- Uribe-Opazo MA, Borssoi JA, Galea M (2012) Influence diagnostics in Gaussian spatial linear models. *Journal of Applied. Statistics* 39(3):615-630. DOI: <http://dx.doi.org/10.1080/02664763.2011.607802>
- Wendpap BG, Uribe-Opazo MA, Johann JA, Vilas Boas MA, De Souza EG (2015) Geostatistical models in a study on the spatio-temporal dependence of agricultural data. *Journal of Food, Agriculture & Environment*. 13(3-4):21-28.