

# Sustainability of Brazilian fiscal policy, once again: corrective policy response over time

## Viviane Luporini

Professora - Instituto de Economia - Universidade Federal do Rio de Janeiro (UFRJ)  
Endereço: Avenida Pasteur, 250 – Sala 103 - Urca - Rio de Janeiro/RJ - Brasil  
CEP: 22290-240 - E-mail: [viviane.luporini@ie.ufrj.br](mailto:viviane.luporini@ie.ufrj.br)

Recebido em 03 de junho de 2013. Aceito em 16 de dezembro de 2013.

## Resumo

O artigo revisita a questão da sustentabilidade da política fiscal brasileira analisando as respostas fiscais do governo a alterações na razão dívida-PIB, com vistas a avaliar qual tem sido a resposta fiscal média do governo brasileiro, e como essa resposta fiscal tem variado ao longo do tempo. Utilizando dados mensais e controlando para variações no produto e participação relativa de títulos indexados, estimamos funções de reação sequenciais com uma janela móvel de 12 observações. Os resultados indicam que a política fiscal no período foi sustentável, com uma resposta fiscal média do governo consolidado de 0.096 pontos percentuais no *superávit* primário para um aumento de um ponto percentual na relação dívida-PIB. Verificamos ainda que a função de reação tornou-se mais estável, porém menos sensível a aumentos da relação dívida/PIB após o ano de 2000 e assumiu uma tendência declinante após 2006.

## Palavras-Chave

Função de reação fiscal. Sustentabilidade fiscal. Brasil.

## Abstract

This paper estimates a fiscal reaction function for Brazil and investigates how the government's fiscal reaction has changed over time when controlling for cyclical variations in output and the relative participation of indexed debt. Using monthly data since 1991, we estimate a rolling reaction function with a one observation step and a sample-window of 12 observations. Our results indicate that the government's fiscal response has been such that a one percent increase in the debt-GDP ratio can be associated to an average increase in the primary surplus of approximately 0.096% over GDP or 9.6 basis points; the government's fiscal reaction has become more stable but less responsive to the debt-income level after 2000 and assumed a declining trend after 2006.

## Keywords

Fiscal reaction function. Fiscal sustainability. Brazil.

## JEL Classification

H62. H63. E62.

---

♦ I would like to thank the reviewer for his/her thorough reading and useful comments and suggestions, which have significantly contributed to improve the article. As usual, the responsibility for the remaining errors and omissions is entirely mine.

## 1. Introduction

Most of the applied literature on fiscal sustainability are based on the econometric implications of a government following an intertemporally balanced budget constraint. Compliance or not to the budget constraint is usually tested as a cointegrating relationship between revenues and interest-inclusive government expenditures or, equivalently, as a mean-reverting process for the debt-GDP ratio series. Articles by Hamilton and Flavin (1986), Trehan and Walsh (1991), Wilcox (1989), Hakkio and Rush (1991), Ahmed and Rogers (1995), Uctum and Wickens (2000), amongst others, have all analyzed sustainability in this fashion. For Brazil, following the international literature, Rocha (1995), Tanner (1995), Luporini (2000), Issler and Lima (2000), all tested sustainability through the econometric properties of the debt, revenue and expenditure series, supporting sustainability. More recently, Bicalho (2005) found that Brazilian fiscal policy was sustainable for the period 1997-2004, while Giambiagi and Ronci (2004) concluded for an unsustainable policy between 1995 and 2002. Using a probabilistic approach, Mendoza and Oviedo (2004), Garcia and Rigobon (2004), Tanner and Samake (2008), and Luporini and Licha (2009) also gave evidence of a fiscally sustainable public debt for Brazil.

Bohn (2007) shows, however, that an intertemporally balanced budget imposes very weak econometric restriction on the series of debt or revenues and expenditures. In proving his bold statements, Bohn shows how a broader class of stochastic processes may comply with an intertemporally balanced budget and yet violate mostly used conditions for sustainability, namely stationarity and cointegration. A more promising approach would be, according to the author, analyzing fiscal sustainability through a fiscal reaction function. Earlier, Uctum, Thurston and Uctum (2006) applied the usual econometric implications of an intertemporally balanced budget (mainly unit root tests) to G7 and some Asian and Latin American countries (but not Brazil) and showed how sensitive these results could be to the inclusion (or not) of structural breaks in the tendency of the debt and deficit series, and how fiscal reaction functions could be used as a more appropriate instrument to analyze fiscal sustainability.

A fiscal reaction function checks whether the government's behavior has been sufficiently "responsive" to increments in the debt.

Luporini (2002), De Mello (2005), Lima and Simonassi (2005), and more recently, Mendonça, Santos and Sachsida (2009) and Simonassi (2013) have estimated fiscal reaction functions for Brazil. Mendonça, Santos and Sachsida, used a Markov switching model over the period 1995-2007 and found that Brazilian fiscal policy was more responsive to accumulating debt prior to the year 2000. Simonassi (2013) identifies two endogenous breaks on the Brazilian fiscal reaction function, in 1994 and in 2003. This paper also estimates a fiscal reaction function for Brazil, but we further investigate the evolution of the fiscal reaction function, analyzing how the government's fiscal reaction has changed over time when controlling for cyclical variations in output and the relative participation of floating rate indexed debt. By analyzing the fiscal response through time using a rolling sample window of 12 months, we hope to identify changes in the fiscal behavior of Brazilian authorities that may not be readily captured by the empirical approaches previously used for Brazilian data. Specifically, we pose ourselves two questions:

- a) What has been the average fiscal response of the Brazilian government to variations in its public debt?
- b) How has the Brazilian fiscal response behaved over time?

Our results indicate that the government's fiscal response has been such that a 1 percent increase in the debt-GDP ratio can be associated to an average increase in the primary surplus of approximately 0.096% over GDP or 9.6 basis points, the government's fiscal reaction has become more stable but less responsive to the debt-income level after 2000 and assumed a declining trend after 2006.

More recently, the Treasury has issued securities to transfer resources to federal banks in order to foster their capacity to offer credit lines to infrastructure and housing projects. Although these operations do not alter the net liability position of the consolidated public sector, they have increased the gross debt-income ratio. A simple estimation of the fiscal reaction function over the period 2001:01 through 2013:08 delivered a fiscal parameter 1.26 basis points lower for the response to the gross debt-income ratio. Although the recent period deserves a more detailed analysis, the results suggest a different behavior of the fiscal reaction function to the gross measure of the government debt.

The article is organized as follows. Section 2 presents the government's budget constraint, the problems for assessing fiscal sustainability and present the fiscal reaction function. The results for the corrective policy responses by the Brazilian government and its evolution through time are presented in section 3. Section 4 concludes the article.

## 2. The government's budget constraint and Bohn's fiscal reaction function

The theory of government finance states that a fiscal policy is fiscally sustainable when the government follows an intertemporally balanced budget. In the absence of monetary financing and shocks, the government's budget constraint in real terms and as a ratio to income can be written as:

$$b_t - b_{t-1} = g_t - t_t + (r_{t-1} - k_{t-1})b_{t-1} \quad (1)$$

where,

$b$  is the par value of the stock of government debt;

$g$  and  $t$  are net of interest government expenditures and tax revenue, respectively;

$r$  is the *ex post* after-tax real rate of interest;

$k$  is the growth rate of income.

As the budget constraint above indicates, the evolution of the debt-income ratio depends mainly on the primary deficit ( $g - t$ ) and on the product of the accumulated debt-income ratio and the difference between the rate of interest paid on government's securities and the growth rate of the economy. If the difference is positive, the government needs a primary surplus to keep the debt/income ratio from rising; if it is negative, the debt/income ratio may be stable even in the presence of some level of primary deficit.<sup>1</sup>

<sup>1</sup> In fact, the budget constraint is not binding when  $k$  is greater than  $r$ .

Assuming no growth and a constant interest rate just for mathematical simplicity, applying forward substitution to the budget constraint, taking expectations as of time  $t$  and applying the limit gives the well-known *no-Ponzi* scheme condition:

$$\lim_{n \rightarrow \infty} \left( \frac{1}{1+r} \right)^n E_t[b_{t+n}] = 0 \quad (2)$$

As we know, the *no-Ponzi* condition indicates that the government is neither borrowing without collateral nor accumulating excess revenues that could be used to improve general welfare. Sustainability thus requires that the government debt be offset by expected future primary surpluses of equal present-value.

Empirically, the *no-Ponzi* condition has been tested in one of two ways: as a cointegrating relationship between revenues and interest inclusive government expenditures or, equivalently, as a mean-reverting process for the debt/income ratio series [Hamilton and Flavin (1986), Trehan and Walsh (1988), Wilcox (1989), Hakkio and Rush (1991), Ahmed and Rogers (1995), Uctum and Wickens (2000), amongst others].<sup>2</sup>

In a stochastic environment, the real return on government bonds commonly used as a discount rate will actually depend on how the overall level of government debt is distributed across states of nature.<sup>3</sup>

Bohn (2007) argues that, although mathematically correct, the results used in most empirical work on sustainability restrict the class of admissible alternative stochastic processes “in a way that rules out higher-order integration” [Bohn, (2007) p. 1838]. In fact, the author shows that if the debt series is integrated of any finite order,  $b_t \sim I(m)$  for any finite  $m \geq 0$ , it will satisfy the transversality or *no-Ponzi* condition (equation 2) as long as the real interest rate (net of growth rate in the case above) is positive. This implies that any finite order of integration is compatible with the intertemporal

<sup>2</sup> For analysis of the Brazilian case, see for example Rocha (1995), Tanner (1995), Issler and Lima (1997), Luporini (2000). For a probabilistic treatment of the sustainability of the Brazilian public debt see Mendoza and Oviedo (2004), Tanner and Samake (2008), and Luporini and Licha (2009).

<sup>3</sup> See Bohn (1995) and (2005) for a detailed discussion of this point.

budget constraint. This is so because the discounting factor in (2) is exponential in  $n$  while the conditional expectation of an integrated variable of order  $m$  will be, at most, a polynomial of order  $m$  on the time horizon  $n$ . As exponential growth is known to dominate polynomial growth of any order, the discount factor in (2) will asymptotically dominate the expected value of debt. As a result, with a positive real (net of growth) interest rate, the discount factor will tend to zero as  $n$  rises and the intertemporal budget constraint will be satisfied for any order of integration of the debt series.

Empirically his proposition means that one should not conclude for compliance or not to the *no-Ponzi* condition based on unit root and cointegration tests. Yet, a non-stationary debt means that the series does not have an upper bound, which clearly has economic implications for the government's credibility and its debt management conditions. For instance, Greenlaw, Hamilton, Hooper and Mishkin (2013) have recently developed a model to show how high debt/GDP levels can make governments vulnerable to adverse feedback effects from the higher interest rates required by security holders.

### 2.1. The fiscal reaction function

Given the possible shortcomings of the unit root and cointegration sustainability tests, Bohn (1998, 2005) thus proposes a simple linear fiscal reaction function that ensures sustainability in a variety of stochastic situations. The function consists of searching for evidence of corrective action by the government in response to changes in its debt-income ratio:

$$s_t = \rho b_{t-1} + \mu_t \quad (3)$$

where,  $s_t$  and  $b_{t-1}$  stand for the primary surplus and debt-income ratios. The "error term"  $\mu_t$  is bounded as a share of income and represents other determinants of fiscal surplus.

The main hypothesis tested when estimating a fiscal reaction function is that the government has been responding to increases in its debt by adjusting its primary surplus or, equivalently, reducing its deficit. A strictly positive coefficient on  $b_{t-1}$  implies that a negative

shock that results in an increase in the debt-income ratio, regardless of its nature, leads eventually to an increase in the primary surplus, ensuring compliance to an intertemporal budget constraint and thus fiscal sustainability.

In order to understand the relationship between the fiscal reaction function and the government's budget constraint, we may rewrite (1) as:

$$b_t = -s_t + (1 + r_{t-1} - k_{t-1})b_{t-1} \quad (4)$$

where  $s_t = t_t - g_t$  defines the primary surplus. Combining equation (4) with the reaction function (3), we may establish a relationship between the government's fiscal policy and the behavior of the debt-income ratio:

$$b_t = [1 + r_{t-1} - k_{t-1} - \rho]b_{t-1} - \mu_t \quad (5)$$

The conditions for debt management depend on what is expected for the debt/income ratio over time. Assuming particular values for the real interest rate ( $r_t = r^*$ ) and the economy's growth rate ( $k_t = k^*$ ) and taking expectations as of time  $t$  on (5):

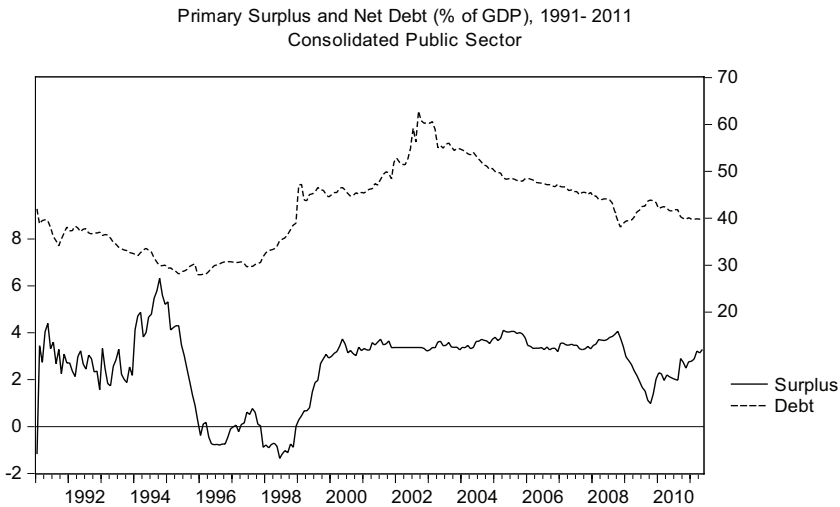
$$E(b_t) = [1 + r^* - k^* - \rho](b_{t-1}) \quad (5')$$

That is, economic agents will expect the debt-income ratio to rise compared to the previous observed debt-income ratio when  $[1 + r^* - k^* - \rho] > 1$ , implying  $\rho < r^* - k^*$ . On the other hand, when  $[1 + r^* - k^* - \rho] < 1$ , implying  $\rho > r^* - k^*$ , agents will expect the debt-income ratio to decline in relation to the previous observed level, improving conditions for debt management. Stabilizing expectations about the debt-income ratio requires that  $[1 + r^* - k^* - \rho] < 1$  or  $\rho > r^* - k^*$  and fiscal policy must be such that the fiscal response to a debt increment has to be greater, on average, than the real rate at which the debt-income itself is growing ( $r - k$ ). In other words, the fiscal reaction has to overcome the positive difference between the real rate of return paid on government securities and the economy's growth rate.<sup>4</sup>

<sup>4</sup> This is provided that the economy is operating on the dynamically efficient region. In fact, if this is not the case ( $r < k$ , with probability one), the government's budget is not binding and the fiscal reaction would be irrelevant.

### 3. Corrective policy responses by the Brazilian government

Fiscal sustainability will be analyzed by the relationship between the primary surplus and the debt-income ratio for the consolidated public sector. The evolution of these data for Brazil is presented in Figure 1.



The primary result indicates surpluses for most of the period analyzed. Between 1991 and the Real Plan of June 1994, the primary result averaged 2.9% of GDP but the fiscal stance deteriorated between 1995 and 1998. As prices stabilized after 1994, the possibility of reducing real government expenditures through inflation to balance the budget was no longer possible and bad budget practices were uncovered. Until 1994, because revenues were price-indexed while expenditures were not, simply delaying payments could help improving the budget. Also during this period, the so-called hidden liabilities began to be properly included in the government's accounts, contributing to the deterioration of its fiscal stance.

At the end of 1998, the crawling peg exchange rate system used to support domestic prices came under attack. Facing an external and fiscal crisis, the government floated the currency in 1999 and implemented institutional changes, most importantly, it approved the Fiscal Responsibility Law (LRF) in 2000. Although previous



legislation (Complementary Laws 82/95 and 96/99, known as “*Lei Camata*” I and II, respectively), already established ceilings on government payroll (60% of net revenues), the Fiscal Responsibility Law extended the purposes of the “*Lei de Diretrizes Orçamentárias*” (LDO), which now includes detailed fiscal amendments: “*Anexo de Metas Fiscais*” and “*Anexo de Riscos Fiscais*”. The “*Anexos*” establish targets for the primary surplus and net debt of the consolidated public sector, based on expected figures for the growth rate of GDP, nominal interest rates and the Real/US Dollar exchange rate for the current and two subsequent fiscal years, and establish criteria to limit expenditures in the event of fiscal revenues being lower than originally expected so that fiscal equilibrium can be guaranteed.

That is, with the Fiscal Responsibility Law (LRF), the budget proposed annually by the government (federal and local) in the “*Lei Orçamentária Anual*” (LOA) must follow not only the priorities established by the “*Lei de Diretrizes Orçamentárias*” (LDO), but also the fiscal limits established by the LRF. This represented a change in the fiscal regime and resulted in a persistent downward trend for the debt/GDP level since 2002.

This benign evolution of the debt-income level was temporarily interrupted by the international crisis of 2008. The effects of the crisis on the overall growth rate of Brazil were relatively mild until 2011, in spite of the poor performance of the industrial sector, as active fiscal policy by the federal government kept consumption afloat.

In order to assess fiscal sustainability, we will search for a systematic relationship between the primary surplus and the debt-income ratio by estimating the following regression equation:

$$s_t = \beta_1 + \rho b_{t-1} + \beta_j X_{jt} + \varepsilon_t, \quad j=2,\dots,m \quad (6)$$

where  $X_{jt}$  is a set of  $j=2,\dots,m$  control variables that may also influence the government’s surplus, such as the business cycle and debt management actions by the Treasury.

Tax smoothing considerations suggests that budget deficits might be higher than normal during economic downturns. As indicated by Barro (1979), the deadweight loss from taxation would be minimized

when the government acts counter-cyclically increasing its budget deficits during economic recessions while saving up during periods of economic growth. Empirically, a measure of the economic cycle (*ygap*) is added to the fiscal reaction function as a control variable. We should expect a positive coefficient if the government follows a tax smoothing policy.

A second control variable (*index*) used in the estimations is the percentage of government securities formally indexed to the baseline interest rate, the *Selic* rate. For a given debt-income level, the higher the relative participation of indexed securities in the total debt, the lower the market's appetite for securities sold at a discount (nominal securities). This would in turn require a higher fiscal response by the government in order to increase fiscal credibility and improve the conditions for debt management.

For the fiscal policy, as previously discussed, the government may be considered fiscally sustainable if the coefficient on the debt-income ratio,  $\rho$ , is strictly positive. We will first investigate the average fiscal response followed by the Brazilian government during the period and then we will investigate how it has changed over time. A time-varying fiscal response has the advantage of allowing for possible changes in fiscal regime without having to establish, endogenously or exogenously, specific periods for structural breaks.

The method of estimation depends on the stochastic nature of the data. The output gap, calculated as deviations of output from a *hordrick-prescott* filter, and the relative participation of indexed securities on total debt are stationary by construction. Results for unit root tests are presented in Table 1.

**Table 1: Unit Root and Stationarity Tests** <sup>a/</sup>

Variable	ADF <sup>b/</sup>	ADF-GLS	KPSS
$s_t$	I(1)	I(1)	I(0)
$b_t$	I(1)	I(1)	I(1)

a/ ADF (Augmented Dickey-Fuller) and ADF-GLS (Generalized Augmented Dickey-Fuller Test); KPSS (Kwiatkowski, Phillips, Schmidt and Shin, 1992, stationarity test).

b/ All testes included only a constant as exogenous variable, as the graphs do not indicate the presence of deterministic trends in the series [Hayashi, 2000]; I(1) and I(0) indicate integration of order 1 (presence of a stochastic trend or unit root) or of order zero (stationary or absence of a unit root).

The unit root tests indicate that both the primary surplus and the net public debt may have stochastic trends (are integrated of order 1). As such, the search for a sustainable relationship between the primary surplus and the public debt will rely on a possible cointegrating vector relating these two fiscal variables. Cointegration tests are presented in Table 2.

**Table 2: Cointegration tests** <sup>a/</sup>

	Trace Statistic	p-value <sup>b/</sup>	Max Eigen Statistic	p-value <sup>b/</sup>
None	74.645*	0	74.170*	0
At most 1	0,475	0,554	0,475	0,554

a/ s and b endogenous, allowing for a constant term in the cointegrating vector and VAR. No exogenous variables included to control for possible bias in the results as critical values assume no exogenous variables.

b/ MacKinnon, Haug and Michelis (1999) p-values, Eviews- version 7.1.

As Table 2 indicates, both the trace and maximum eigenvalue cointegration tests reject the null of no cointegration and do not reject the presence of one cointegrating relation between the primary surplus and the debt-income ratio.

When the variables are cointegrated, the coefficients may be estimated using a system of equations (vector error correction model proposed by Johansen, 1991) or a single equation model (Banerjee, Dolado, Galbraith, and Hendry, 1993). Johansen's method departs from a vector auto regression system (VAR) and jointly estimates both the cointegrating vector (the long run relation between the variables) and the parameters of the error correction vector (temporary deviations from the long run relation); as such, Johansen's method is asymptotically more efficient than single equation methods. But VAR systems are known for their sensitivity to alternative specification and instability in finite samples, which makes single equation models more attractive in finite sample contexts.

Here, we are interested in the long-term relation between primary surpluses and debt. Hamilton (1994) shows that if the variables are cointegrated, the cointegrating vector can be consistently estimated by OLS and, as long as the explanatory variables are weakly exogenous, standard *t* or *F* statistics may be used to test hypothesis about the cointegrating vector.

a) *The average fiscal response of the Brazilian government*

As discussed previously, a fiscally sustainable policy implies a positive coefficient on the debt-income ratio indicating corrective measures in the primary surplus. What has been the average fiscal response by the Brazilian government to variations in the debt-income ratio over the period 1991 through 2011?

To answer this question we estimate the cointegrating vector implied by equation (6) using both, the Johansen's method (the vector error correction model), and the uniequational method (results not reported). The results for the cointegrating vector are reported in Table 3 below. The results for the long-run relationship between the fiscal variables as shown in the cointegrating equation ( $s_{t-1} - \rho b_{t-1}$ ) indicate a positive and systematic response of the primary surplus to the debt-income ratio, suggesting a sustainable fiscal policy. According to Models I and II, a 1 percent increase in the debt-GDP ratio can be associated with an average increase in the primary surplus of approximately 0.09% of GDP. Coefficients are positive and statistically significant.

In Model III, the percentage of government securities formally indexed to the baseline interest rate, (*index*), is included as a control variable. As discussed earlier, the higher the relative participation of indexed securities, the lower the market's willingness to hold nominal securities, and the higher should be the government's fiscal response. Results for Model III do not suggest that indexed securities have been important for the fiscal reaction function or to the short-term dynamics of the primary surplus as a ratio to income as the cointegration coefficient, as well as the coefficient on the *index* variable, are not statistically significant.

The short-term dynamics of the primary surplus as a ratio to income is reported in the second part of Table 3. We observe that for all Models, the coefficient on the error correction term (see Cointegrating. Eq.) is negative and statistically significant in the primary surplus equation. This indicates that temporary deviations from the long-term surplus-debt relationship are compensated by changes in the primary surplus. That is, when shocks imply a primary surplus above the debt-income ratio as determined by the long-term coefficient ( $s_{t-1} > \rho b_{t-1}$ ), there is a negative change in the

primary surplus in the next period so that its value tends to return to its long term estimated equilibrium.

Similarly, if a shock induces a surplus below the long-term relationship with the debt-income ratio, there will be a compensating positive change in the surplus-income ratio. In fact, one percentage point deviation from the estimated long-term surplus-debt relation induces, approximately, a 0.05 percentage point correction in the primary surplus. Cyclical variations in output (Models II and III) and the relative participation of indexed securities (Model III) were not statistically significant.

**Table 3: Vector Error Correction Estimates a/d/**

	Model I		Model II		Model III	
Cointegrating Eq:						
$s_{t-1}$		1		1		1
$b_{t-1}$		-0.092847*		-0.096165*		-0.075523
		(0.04013)		(0.04133)		(0.05143)
		[-2.31360]		[-2.32701]		[-1.46857]
Error Correction						
Cointegrating Eq:						
	$Ds_t$	$Db_t$	$Ds_t$	$Db_t$	$Ds_t$	$Db_t$
	-0.048659*	-0.133100*	-0.049856*	-0.122097*	-0.045354*	-0.128173*
	(0.01861)	(0.04953)	(0.01871)	(0.04947)	(0.01896)	(0.04995)
	[-2.61424]	[-2.68729]	[-2.66463]	[-2.46790]	[-2.39193]	[-2.56611]
	$Dst-1$	0.144979	-0.068746	0.126713	-0.070076	0.126410
	(0.05238)	(0.13938)	(0.05257)	(0.13902)	(0.05305)	(0.13975)
	[-1.33520]	[ 1.04015]	[-1.30761]	[ 0.91150]	[-1.32090]	[ 0.90454]
	$Dbt-1$	0.021759	-0.023568	0.022026	-0.030477	0.023718
	(0.02475)	(0.06587)	(0.02484)	(0.06569)	(0.02487)	(0.06551)
	[ 0.87901]	[-0.35780]	[ 0.88655]	[-0.46392]	[ 0.95369]	[-0.48502]
	C	0.002143	-0.016781	0.001940	-0.013979	-0.021763
	(0.02520)	(0.06705)	(0.02524)	(0.06674)	(0.05767)	(0.15191)
	[ 0.08504]	[-0.25028]	[ 0.07688]	[-0.20945]	[-0.37738]	[-0.45378]
	YGAP		0.001318	-0.016548	0.001148	-0.016640
			(0.00337)	(0.00891)	(0.00339)	(0.00893)
			[ 0.39121]	[-1.85792]	[ 0.33864]	[-1.86406]
	Index				0.000615	0.001422
					(0.00135)	(0.00355)
					[ 0.45589]	[ 0.40028]
Adj. R-squared	0.031473	0.063020	0.028594	0.072052	0.021181	0.072008
F-statistic	2.310671	3.712772	2.017648	3.684372	1.654605	3.347260
Det. resid cov. (dof adj.)		0.160144		0.159168		0.160364
Log likelihood		-459.9523		-458.1772		-458.0507
Akaike info criterion		3.917303		3.919154		3.934574
Schwarz criterion		4.147299		4.177899		4.222068
Observations		243		243		243
LM(12), p-values c/		0.5817		0.6512		0.6375
White Test, p-values		0.4976		0.5995		0.0005*

a/ Estimation assumed a constant term in the VAR system; Dummies (2001m12, 2002m11, 1991m12) included to control for Central Bank primary surplus series.(\*) Indicates significance at the 5% level, asymptotic critical value of 1.96.

b/ Null of no serial correlation up to lag 12.

c/ Null of homocedasticity, no cross-terms.

*b) Fiscal Reaction Over Time*

The results above indicated that a 1 percent increase in the debt-GDP ratio can be associated with an average increase in the primary surplus of approximately 0.09% of GDP. But how has the fiscal response changed over the period analyzed?

In order to answer this question, we estimate a rolling regression equation (6) with a one observation step and a sample-window of 12 observations. Equation (6) involves the primary surplus and the debt-income ratios (both with stochastic trends) and stationary variables used as controls. As indicated in Sims, Stock, and Watson (1990) and Banerjee et. alli (1993), regressions involving a set of cointegrated variables along with stationary variables may be consistently estimated by OLS and inference on the coefficients can be made based on standard *t* tests (Hamilton, 1994).<sup>5</sup> The evolution of the fiscal response by the Brazilian government is displayed in Figure 2.

The values for the fiscal parameter observed in the graph represent the rolling regression coefficients over a 12-month window, so that each point estimated actually reflects the fiscal response for the 12-month period ahead. We observe a high variation of the fiscal parameter during the high inflation period (1991:01 through 1994:06) and the collapse of the crawling-peg regime in January of 1999. Along with the fiscal efforts implemented by the government after 1999 and the approval the Fiscal Responsibility Law in 2000, we observe an improvement in the fiscal response to debt.

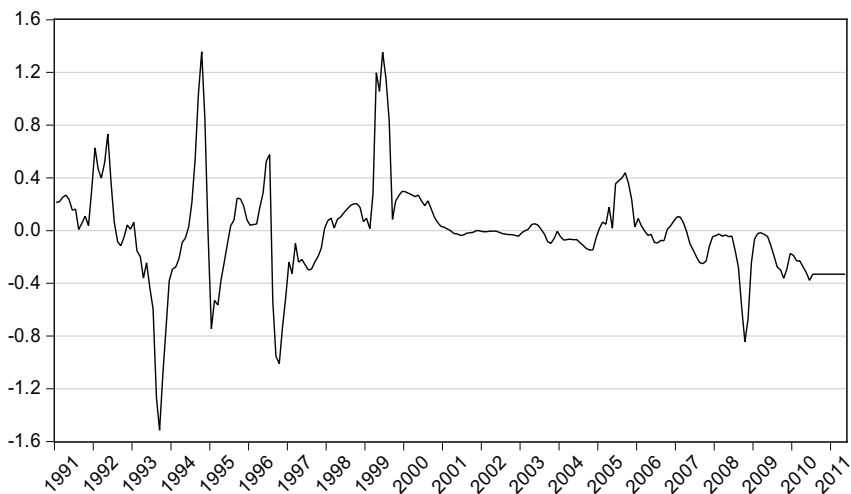
Fiscal reaction becomes weaker but relatively stable after 2001; it increases again during 2005 and reaches a high 0.4% for the point estimated for September of that year, reflecting the fiscal policy of 2006. After that, the fiscal parameter became more volatile and assumed a declining trend. There is indication of a change in the fiscal regime after 2000. These results are in line with those obtained by de Mello (2005) and by Mendonça, Santos and Sachsida (2009). More recently, using dummy variables in the analysis of fiscal reaction functions for Brazil, Simonassi (2013) estimates two probable structural breaks, in may/1994 and February/2003.<sup>6</sup>

<sup>5</sup> The program for the rolling regressions is available from the authors upon request (Eviews 7.1).

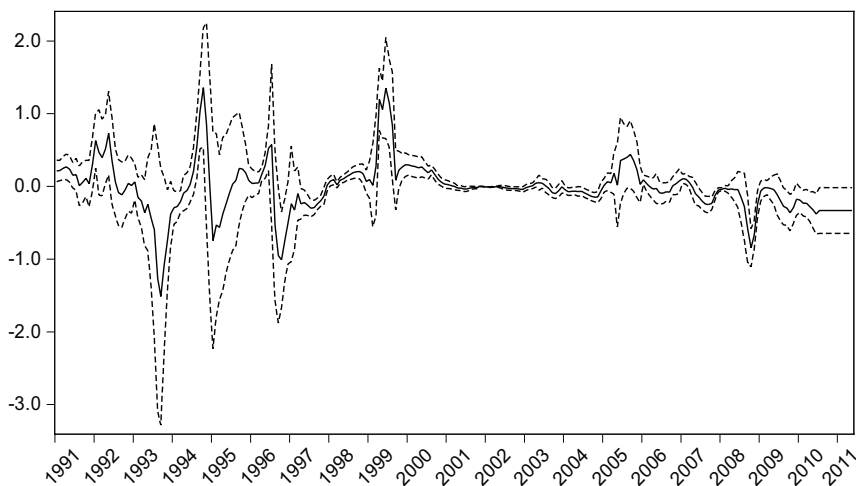
<sup>6</sup> In fact, we adjusted the sample to the one used by Simonassi (2013) and obtained similar coefficients for the fiscal reaction function.

Fiscal Reaction Parameter Over Time: 1991-2011 a/

Primary surplus response to indebtedness



Primary Surplus Responses and Two SE Confidence Interval



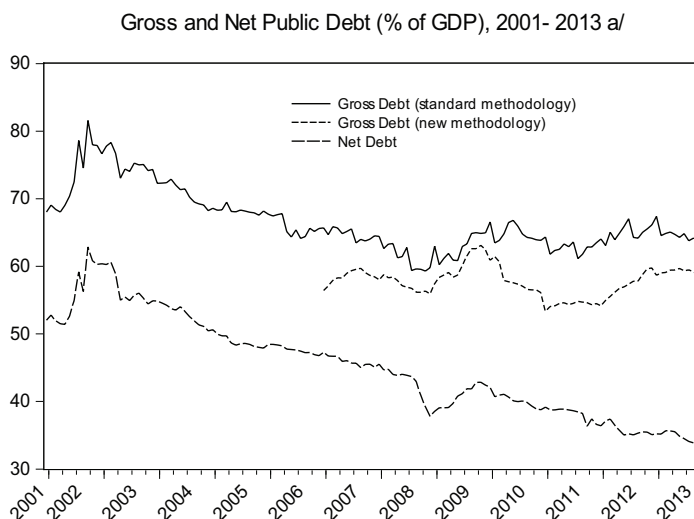
Source: Author's calculations based on data from Banco Central do Brasil.  
a/ Twelve-month rolling regressions

As previously discussed, stabilizing the debt-income ratio requires that the fiscal reaction parameter overcome the positive difference between the real rate of return paid on government securities and the economy's growth rate. Obtaining an empirical counterpart of the rate paid on government debt is not easy, as it reflects the distribution of securities over different maturities and indexation clauses. Ideally, this rate should also be net of taxes, complicating even more an empirical measurement. But, in order to have a rough idea about the relationship between the fiscal parameter and  $(r - k)$ , we consider a real interest rate of about 2% and a growth rate of 1,5%. Debt would then increase, *ceteris paribus*, at 0.5% over GDP. According to the estimations, for an increase of debt by 1% of GDP (or, equivalently, one percentage point over GDP), the primary surplus has responded, on average, by 0.09% of GDP and we may conclude that the average fiscal reaction has been 0.49 percentage points short of the necessary for stabilizing debt-income ratio expectations. That is, although a strictly positive fiscal reaction is indicative of a sustainable fiscal policy, the average fiscal reaction may not be sufficient to overturn expectations of a higher debt-income ratio in the near future.

### *3.1 Recent fiscal response and gross public debt*

We used data for the net government debt to estimate the fiscal reaction function. Recently, the Brazilian government has issued securities to transfer resources to the federal owned banks (mainly the development bank, BNDES) in order to foster their capacity to offer credit lines to much needed housing and infrastructure projects. As these operations do not alter the short term net liability position of the consolidated public sector or its net debt, some analysts have argued that the gross measure of the debt should now be used to analyze the fiscal stance of the government. In fact, as shown below (Figure 3), we observe that both measures of debt followed the same declining trend until the international crisis of 2008. After 2009, gross debt assumes a different pattern while the net measure resumes its steady decline.





a/ Debt series 4537 and 13762. "New methodology" excludes Central Bank securities used for monetary policy and other items; "standard" is the measure used by international institutions.

Source: Central Bank of Brazil

A simple (OLS) estimation of the fiscal reaction function to the gross (standard) measure of the debt-income ratio suggests a weaker reaction parameter for the gross debt measure:<sup>7</sup>

$$s_t = -0.0237 + 0.0469 b_{t-1}^{GROSS} + 0.1155 ygap_{t-1}$$

Prob ( $t_{HAC\_statistic}$ )                      (0.0125)                      (0.0163)

Adjusted  $R^2 = 0.165$   
 Prob (F-statistic) = 0.000005

$$s_t = 0.4405 + 0.0595 b_{t-1}^{NET} + 0.1003 ygap_{t-1}$$

Prob ( $t_{HAC\_statistic}$ )                      (0.0000)                      (0.0267)

Adjusted  $R^2 = 0.398$   
 Prob (F-statistic) = 0.000000

<sup>7</sup> Ordinary Least Squares estimation using monthly data from 2003m02 through 2013m09. Heteroscedasticity and autocorrelation consistent (HAC) t values based on the Newey-West variance-covariance matrix. Associated p-values in parenthesis indicate statistically significant coefficients for debt and the output gap at the 5% confidence level.

While the average fiscal response to the net measure of the debt was 5.95 basis points over GDP, the average response to the gross measure, for the same period, was 1.26 basis points lower or 4.69. Although the recent period deserves a more detailed analysis, the results suggest a different behavior of the fiscal reaction function to the gross measure of the government debt.

#### 4. Final remarks

Fiscal targets have become an important part of the Brazilian government's budgetary process and accountability. In this paper, we provided estimates of the fiscal reaction function of the Brazilian government and we present evidence of a fiscally sustainable policy defined as a (strictly) positive response of the primary surplus to increases in the debt-income level. Using monthly data, the paper analyses both the average fiscal response of the primary surplus to variations of the government public debt and the evolution of the fiscal reaction function through time, controlling for cyclical variations in output and the relative participation of floating rate indexed debt. A time-varying fiscal response has the advantage of allowing for possible changes in fiscal regime without having to establish, endogenously or exogenously, specific periods for possible structural breaks.

Specifically, we answered two questions:

- a) what has been the average fiscal response of the Brazilian government to variations in its public debt? And,
- b) how has the Brazilian fiscal response behaved over time?

According to our results, the government's policy has been fiscally sustainable over the period analyzed: a one percent increase in the debt-GDP ratio has been associated with an average increase in the primary surplus of approximately 0.096% over GDP or 9.6 basis points.

Analyzing the evolution of the fiscal response through time, we find that the policy became more stable after the year 2000, but less responsive to the debt-income level. Fiscal response seems to have assumed a declining trend after 2006. Our results are in line with those previously obtained by the literature.

More recently, the Brazilian government has issued securities to transfer resources to the federal owned banks in order to foster their capacity to offer credit lines to much needed housing and infrastructure projects. These operations do not alter the short term net liability position of the consolidated public sector or its net debt, but alter the gross measure of the government debt. A simple estimation of the fiscal reaction function suggests that the recent fiscal response has been, on average, weaker when the gross measure of the debt is used in the estimations. If this result resists a more detailed analysis, it will imply that fiscal policy has been more expansionary than the net debt measure might suggest. One of the consequences is that a weak fiscal response to a relatively high (gross) debt-income level, in a context of rising inflationary expectations and low output growth, significantly reduces the choices available to the monetary authorities and further complicates a future fiscal consolidation plan.

## References

- AHMED S. & ROGERS J. (1995). Government budget deficits and trade deficits: are present value constraints satisfied in long-term data? *Journal of Monetary Economics* 36:351-374.
- BANERJEE, A., DOLADO, J.J., GALBRAITH, J.W. AND HENDRY, D.F. (1993): Co-integration, Error Correction, and the Econometric Analysis of Non-Stationary Data. Oxford: Oxford University Press.
- BICALHO, A. (2005). Teste de sustentabilidade e ajuste fiscal no Brasil Pós-Real. Master Thesis, EPGE/FGV, Rio de Janeiro.
- BOHN, H. (1998). The behavior of U.S. public debt and deficits. *The Quarterly Journal of Economics* 113(3).
- BOHN, H. (2005). The sustainability of fiscal policy in the United States, *CEsifo Working Paper Series* 1446, CESifo Group Munich.
- BOHN, H. (2007). Are stationarity and cointegration restrictions really necessary for the intertemporal budget constraint?. *Journal of Monetary Economics* 54: 1837-1847.
- DE MELLO, L. (2005). Estimating a fiscal reaction function: the case of debt sustainability in Brazil. OECD Economics Department Working Papers, n. 423.
- GARCIA and RIGOBON (2004). A risk management approach to emerging market's sovereign debt sustainability with an application to Brazilian data. NBER Working Papers 10336, National Bureau of Economic Research.

- GIAMBIAGI, F. and M. RONCI (2004). Fiscal Policy and Debt Sustainability: Cardoso's Brazil, 1995-2002, IMF Working Paper WP/04/156, Washington, D.C.
- HAKKIO, C. & RUSH M. (1991). Is the budget deficit 'too large'? *Economic Inquiry* 39 (July):429-445.
- HAMILTON, J. (1994). Time Series Analysis. Princeton: Princeton University Press.
- HAMILTON, J. & FLAVIN, M. (1986). On the limitations of government borrowing: a framework for empirical testing. *The American Economic Review* 76(4):809-19.
- HAYASHI, F. (2000). Econometrics. Princeton: Princeton University Press.
- ISSLER, J. V. AND LIMA, L. R. (2000). "Public Debt Sustainability and Endogenous Seigniorage in Brazil: Time Series Evidence from 1947-1992". *Journal of Development Economics*, v.62, 131-147.
- JOHANSEN, S. (1991). "Estimation and hypothesis testing of cointegrated vectors in Gaussian VAR models." *Econometrica*, 59 (6): 1551-1580.
- LIMA, L. R. and SIMONASSI, A. G. (2005). "Dinâmica não-linear e sustentabilidade da dívida pública brasileira". *Pesquisa e Planejamento Econômico*, v. 35(2).
- LUPORINI, V. (2000). "Sustainability of the Brazilian fiscal policy and central bank independence". *Revista Brasileira de Economia*, v.54(2).
- \_\_\_\_\_. (2002). "The behavior of the Brazilian federal domestic debt". *Revista de Economia Aplicada*, 6:713-733.
- LUPORINI, V. and A. LICHA (2009). "Espacio fiscal para el crecimiento em Brasil", in J. Fanelli (org.) *Espacio Fiscal para el crecimiento el Mercosur*: Red Mercosur de Investigaciones Económicas, Zonalibro, Uruguay.
- MENDONÇA, M., C. SANTOS and A. SACHSIDA (2009). Revisitando a função de reação fiscal no Brasil pós-Real: uma abordagem de mudanças de regime. *Estudos Econômicos* vol. 39(4): 873-894.
- MENDOZA, E. and P. OVIEDO (2004). "Public debt, fiscal solvency and macroeconomic uncertainty in Latin American: the case of Brazil, Colombia, Costa Rica and Mexico." NBER, Working Paper 10637.
- ROCHA, F. (1995). Monetary regimes and macroeconomic policy: an empirical analysis of the Brazilian economy. *PhD Dissertation*, University of Illinois at Urbana-Champaign.
- SIMONASSI, A. (2013). Reação fiscal sob mudanças estruturais e a solvência da economia brasileira. *Mimeo*, CAEN/UFC.
- SIMS, Christopher A., JAMES H. Stock, and Mark W. WATSON. 1990. Inference in Linear Time Series Models with Some Unit Roots. *Econometrica* 58 (1): 161-82.
- TANNER, E. (1995). Intertemporal solvency and indexed debt: evidence from Brazil, 1976-1991. *Journal of International Money and Finance*, 14 (4): 549-73.
- TANNER, E. and I. SAMAKE (2008). "Probabilistic sustainability of public debt: a vector autoregression approach for Brazil, Mexico, and Turkey" *IMF Staff Papers*, vol. 55 n. 1.
- TREHAN, B. & WALSH, C. (1991). Testing intertemporal budget constraints: theory and applications to U.S. federal budget and current account deficits. *Journal of Money, Credit, and Banking* 23(2):206-23.
- UCTUM, M. and M. WICKENS (2000). "Debt and deficit ceilings, and the sustainability of fiscal policies: an intertemporal analysis." *Oxford Bulletin of Economics and Statistics*, 62(2).
- UCTUM, M., T. THURSTON and R. UCTUM (2006). "Public debt, the unit root hypothesis and structural breaks: a multi-country analysis". *Economica* 73: 129-156.
- WILCOX, D. (1989). The sustainability of government deficits: implications of the present-value borrowing constraint. *Journal of Money, Credit, and Banking* 21(3):291-306.

## **Appendix:**

### **DATA SET:**

#### **Monthly data, 1991:01 – 2013:08.**

S : Surplus is the negative of the Borrowing Requirements of the Public Sector (% of GDP) – Resultado Primário

Source: Central Bank of Brazil, series 17127 and 5364.

17127 - NFSP sem desvalorização cambial (% PIB) - Fluxo mensal corrente - Resultado primário - Total –

Setor público consolidado com Petrobras - %

5364 - NFSP sem desvalorização cambial (% PIB) - Fluxo mensal corrente - Resultado primário - Total –

Setor público consolidado - %

#### **B: Net Public Debt of the Consolidated Public Sector (% of GDP), Gross general government debt (% GDP)**

Source: Central Bank of Brazil, series 4513, 4537 and 13762.

4513 – Net publicdebt (% GDP) - Total – Consolidated public sector - %

4537 - Gross general government debt (% GDP) - Method used until 2007 - %

13762 - Gross general government debt (% GDP) - Method used since 2008 - %

#### **Ygap: Deviations from a hendrick-prescott filter applied to industrial production index (quantum)**

Source: Central Bank of Brazil, 11064

#### **Index: Relative participation of interest Indexed federal securities**

Source: Central Bank of Brazil, via Ipeadata ([www.ipeadata.gov.br](http://www.ipeadata.gov.br)), series

Títulos - federais - indexados à Over / Selic - fim período - (%) –

Banco Central do Brasil, Boletim, Seção Finanças Públicas (BCB Boletim/F. Públ.) - BM12\_TPFOVER12

Títulos - federais - indexados à Over / Selic - mercado aberto - fim período - (%) –

Banco Central do Brasil, Boletim, Seção Finanças Públicas (BCB Boletim/F. Públ.) - BM12\_TPFOVERMA12

#### **R: Real interest rate (Selic – IPCA inflation)**

Source: Banco Central do Brasil, Instituto Brasileiro de Geografia e Estatística, via Ipeadata ([www.ipeadata.gov.br](http://www.ipeadata.gov.br)), series

Taxa de juros - Over / Selic - (% a.m.) - Banco Central do Brasil, Boletim, Seção mercado financeiro e de capitais (BCB Boletim/M. Finan.) - BM12\_TJOVER12

Inflação - IPCA - (% a.m.) - Instituto Brasileiro de Geografia e Estatística, Sistema Nacional de Índices de Preços ao Consumidor (IBGE/SNIPC) - PRECOS12\_IPCAG12

**IBC-Br: Economic Activity Index (Central Bank)**

Source: Central Bank of Brazil, via Ipeadata ([www.ipeadata.gov.br](http://www.ipeadata.gov.br)), series

Índice de Atividade Econômica do Banco Central (IBC-Br) - dessazonalizado (2002=100) –

- Banco Central do Brasil, Sistema Gerenciador de Séries Temporais (BCB outras/SGS) - SGS12\_IBCBRDESSAZ12