

# *Cercospora talini* on *Talinum patens* in Brazil

Olinto L. Pereira<sup>1</sup>, Robert W. Barreto<sup>1</sup> & José L. Bezerra<sup>2</sup>

<sup>1</sup>Departamento de Fitopatologia, Universidade Federal de Viçosa, CEP 36571-000, Viçosa-MG; <sup>2</sup>Comissão Executiva da Lavoura Cacaueira, Centro de Pesquisa CEPEC/CEPLAC, Cx. Postal 07, CEP 45600-000, Itabuna-BA; e-mail: liparini@bol.com.br

(Accepted for publication on 29/01/2003)

Corresponding author: Olinto L. Pereira

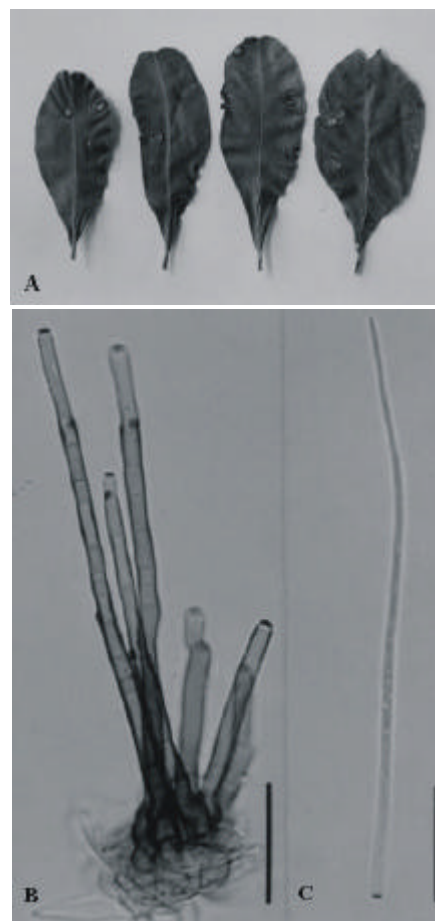
## RESUMO

### *Cercospora talini* em *Talinum patens* no Brasil

O fungo *Cercospora talini* é relatado afetando *Talinum patens* pela primeira vez no Brasil, Itabuna, BA.

*Talinum patens* (Jacq.) Willd (local names: “língua de vaca”, “benção-de-deus” and “maria-gomes”) is a herbaceous plant, native to the Americas, belonging to the Portulacaceae family. It is popularly used as a vegetable in north and northeastern Brazil and is known to have some medicinal properties (Daniel *et al.*, Plantas Medicinai, Editora UFV, 2000). It is also regarded as an invasive weed in some situations (Kissmann & Groth, Plantas Infestantes e Nocivas, 1ª ed., BASF S.A., 1995). Leaf spots were observed on *T. patens* growing close to a cocoa (*Theobroma cacao* L.) nursery in Itabuna, Bahia, in March 2002. Lesions on living leaves were circular, 1-5 mm in diameter, reddish brown with a dark olivaceous border (Figure 1A). *Cercospora talini* Syd. & P. Syd. (Figure 1B and C) was regularly associated with such lesions. The only record of this fungus is from Argentina and Venezuela (Chupp, A monograph of the fungal genus *Cercospora*, 1954). Morphological features for this fungus were: internal mycelium inconspicuous, external mycelium absent; stomata poorly developed, dark brown, minute; conidiophores pale brown, unbranched, cylindrical, two-ten per fascicle, one-five transverse septate, 40.0-80.0 x 4.0-5.0 µm, arising from stomatal openings. Conidiogenous cells terminal or intercalary, integrated, proliferating sympodially; conidiogenous loci thickened and darkened, one-two per cell, holoblastic; conidia filiform to obclavate, dry, solitary, straight to slightly curved, 50.0-120 x 2.0-3.5 µm, hyaline, seven-ten septate, base truncate with a thick and darkened scar (VIC 22220). This is the first record of *C. talini* in Brazil.

**Acknowledgments.** We wish to thank Mr. José Lima da Paixão, CEPLAC Herbarium, for the plant identification.



**FIG. 1** - *Cercospora talini* on *Talinum patens*: (A) symptoms on leaves, (B) conidiophores and (C) conidia. Scale bars (B;C): 25 µm.

02084