



Demarcation of informative chromosomes in tropical sweet corn inbred lines using microsatellite DNA markers

Pedram Kashiani¹, Ghizan Saleh¹, Jothi Malar Panandam², Nur Ashikin Psyquay Abdullah¹ and Ahmad Selamat¹

¹Department of Crop Science, Faculty of Agriculture, Universiti Putra Malaysia, Selangor, Malaysia.

²Department of Animal Science, Faculty of Agriculture, Universiti Putra Malaysia, Selangor, Malaysia.

Abstract

A study of genetic variation among 10 pairs of chromosomes extracted from 13 tropical sweet corn inbred lines, using 99 microsatellite markers, revealed a wide range of genetic diversity. Allelic richness and the number of effective alleles per chromosome ranged from 2.78 to 4.33 and 1.96 to 3.47, respectively, with respective mean values of 3.62 and 2.73. According to the Shannon's information index (I) and Nei's gene diversity coefficient (Nei), Chromosome 10 was the most informative chromosome ($I = 1.311$ and Nei = 0.703), while Chromosome 2 possessed the least ($I = 0.762$ and Nei = 0.456). Based on linkage disequilibrium (LD) measurements for loci less than 50 cM apart on the same chromosome, all loci on Chromosomes 1, 6 and 7 were in equilibrium. Even so, there was a high proportion of genetic variation in Chromosomes 4, 5, 8, 9 and 10, thereby revealing their appropriateness for use in the genetic diversity investigations among tropical sweet corn lines. Chromosome 4, with the highest number of loci in linkage disequilibrium, was considered the best for marker-phenotype association and QTL mapping, followed by Chromosomes 5, 8, 9 and 10.

Key words: microsatellite, inbred line, chromosome, genetic variation, linkage disequilibrium.

Received: January 11, 2012; Accepted: April 9, 2012.

Introduction

Sweet corn (*Zea mays* L. ssp. *saccharata*, $2n = 20$), with a thin pericarp layer on the caryopsis, is consumed at the immature grain-stage of endosperm development. It can be grown in a wide range of environments, so long as its water requirements are in accordance (Kashiani *et al.*, 2011). Due to its high economic value, production in the tropical areas is on the increase (Kashiani *et al.*, 2010; Saleh *et al.*, 2010). The sugary (*su*) or sweet gene in Chromosome 4 either prevents or retards normal conversion of sugar into starch during endosperm development, whence the sweet taste.

The study of variation among chromosomes, besides being a quick way of detecting genes linked to molecular markers, makes it easy to define the degree of genetic relationships among inbred lines. The use of these molecular markers in the breeding process also facilitates efficiently reaching breeding goals, with less reliance on field assaying by inoculation. Over the last two decades, innumerable molecular markers have been developed for almost all the major crop species (Barcaccia, 2010). Microsatellites, also known as SSRs, short tandem repeats (STRs), and se-

quence-tagged microsatellite sites (STMS), are repeated units of short nucleotide motifs in tandem, that are 1 to 6 bp long. Di-, tri- and tetra-nucleotide repeats are widely distributed throughout the genomes of plants and animals (Tautz and Renz, 1984; Persegui *et al.*, 2011). Reportedly, microsatellite technology is useful for evaluating genetic diversity and phylogenetic relationships in plant species (Naeem *et al.*, 2011), microsatellite loci having proven their efficiency as genetic markers, under these circumstances. To date, SSRs have been used with corn for mapping (Taramino and Tingey, 1996), genetic fingerprinting (Senior *et al.*, 1998), and assessing genetic diversity among inbred lines (Liu *et al.*, 2003). Nonetheless, chromosomes, with higher locus contribution to genetic variation for important traits among tropical sweet corn lines, have not yet been demarcated from those with numerous housekeeping genes.

Sweet corn inbreds are extensively used in hybrid production (Anderson and Brown, 1952; Troyer, 2001). They are also important in certain genetic studies, *viz.*, the development of linkage maps (Burr *et al.*, 1988), and quantitative trait loci mapping (QTL) (Austin *et al.*, 2001). Through its narrower genetic base, when compared to field corn (Srdic *et al.*, 2008), the application of high variability microsatellite markers to sweet corn breeding lines would

Send correspondence to Ghizan Saleh. Department of Crop Science, Faculty of Agriculture, Universiti Putra Malaysia 43400 Serdang, Selangor, Malaysia. E-mail: ghizan@agri.upm.edu.my.

greatly contribute to its breeding efficiency. Currently, information on many of these microsatellites, and their respective location on the chromosome, is available in databases. Nonetheless, chromosomes with numerous polymorphic microsatellite loci, capable of detecting high genetic variability, have not yet been distinguished. Moreover, even when using any kind of molecular marker, there is no available information on the characterization of the 10 pairs of specific chromosomes. Although karyotypic data are available, there is an obvious lack in knowledge on inter- and intra-chromosomal variation. This obliges researchers to select microsatellite loci throughout the genome for genetic diversity studies and QTL investigation, thus making investigation time consuming and costly. Hence, the main objective of the present study was to demarcate informative chromosomes with the highest inter- and intra-variation among tropical sweet corn inbred lines, for further marker-assisted breeding work, genetic diversity studies and QTL investigation.

Material and Methods

Through an extensive breeding program carried out in Universiti Putra Malaysia, a set of homozygous inbred lines developed from various tropical-source populations was obtained after eight generations of self-pollination and selection. Among these, 13, originally developed from Malaysian, Indonesian, Hawaiian, Taiwanese and Thailand source-populations, were selected for investigation of innate chromosomal variation. Twenty seeds from each line were germinated in jiffy cups. Eventual seedlings were grown to the two-leaf stage, whereupon genomic DNA was extracted from the young leaves of 10 per line using a DNeasy[®] Plant Mini Kit from QIAGEN[®], according to manufacturer's instruction, but with minor modifications as regards washing steps.

Based on their polymorphism information content (PIC) and QTL information as previously reported, one hundred and five microsatellite regions that are distributed throughout the corn genome were chosen from the maize genome database (MaizeGDB). Six out of 105 microsatellite primers were not successfully amplified, even when tested at different annealing temperatures. The remaining 99, as well as their respective locations in the ten corn chromosomes, are shown in Figure 1. Amplifications were carried out using volumes consisting of 20 μ L PCR reaction containing 5 μ L (25-30 ng) of genomic DNA, 1.5 μ L of PCR 10x buffer, 1.5 μ L of 25 mM MgCl₂, 0.3 μ L of dNTP Mix (10 mM each of dATP, dGTP, dCTP, dTTP), 0.2 unit of *Taq* polymerase (all from QIAGEN[®], *Taq* DNA Polymerase Kit) 1.8 μ L (4 pmol/ μ L) of each primer (F and R primers), and 9.7 μ L of distilled water. PCR amplification was in an Eppendorf Mastercycler Gradient Thermal cycler (Eppendorf Scientific, Westbury, NY), using 96-well-plates. Amplification conditions with the touchdown

thermal cycling protocol were 95 °C for 1 min, 30 cycles of 94 °C for 1 min, 67 °C annealing temperature decreasing by 0.4 °C per cycle for 2 min and 72 °C for 2 min, and a terminal extension step at 72 °C for 1 h. Following amplification, 10 μ L of amplified DNA were mixed with 5 μ L of a formamide loading buffer, and then placed into 4% (w/v) metaphore agarose 36-cm well-to-read gels with 1x TBE buffer. Electrophoresis was performed at 100 volts for 5 min, and followed by 55 volts for approximately 4 h until the bromophenol blue band of the loading dye had been moved forward by 10 cm. After staining with ethidium bromide, all the gels were visualized under UV light with an Alpha EaseR FC Imaging System (Alpha Innotech Corporation, CA). The ChemillImager[™] Gel Doc. imaging system (Alpha Innotech Corporation, CA) was used to record the gels as JPEG files for counterchecking. Fragment sizes were estimated based on GeneRuler[™] 25 and 50 bp DNA Ladders (Fermentas).

Descriptive statistics for each chromosome, including average number of alleles (n_a), number of effective alleles (n_e) (Kimura and Crow, 1964), observed and expected homozygosity (Hom_o and Hom_e , respectively), observed and expected heterozygosity (H_o and H_e , respectively) (Levene, 1949; Nei, 1987), average heterozygosity (\hat{H}), the Shannon's information index (I) (Lewontin, 1972), Nei's expected heterozygosity (Nei, 1973), gene flow (Nm) (Nei, 1987), and coefficient of inbreeding (F) (Lukas and Donald, 2002), were all estimated using the Population Genetic Analysis software (POPGENE) version 1.3.1 (Yeh *et al.*, 1999). F-statistics (F_{IS} , F_{ST} and F_{IT}) for each chromosome were estimated from variance components based on Wright (1978). Classical (D), standardized (D'), and conventional (r^2) linkage disequilibrium (LD) coefficients for any pair of alleles amplified at two loci on the same chromosome, were estimated based on Lewontin and Kojima (1960), using Arlequin suite version 3.5 computer software (Excoffier and Lischer, 2010).

Results

There was a wide range of genetic variation among the 10 pairs of chromosomes obtained from the inbred lines evaluated. Allelic richness and the number of effective alleles per chromosome ranged from 2.78 to 4.33 and 1.96 to 3.47, respectively, with respective mean values of 3.62 and 2.73 (Table 1). The combination, high homozygosity ($Hom_o = 0.9396$), and very low heterozygosity ($H_o = 0.0604$), was a sure indication of Hardy-Weinberg disequilibrium arising from heterozygosity loss during selfing and selection. Heterozygote locus deficiency was also revealed by the high and negative proportion of total chromosomal inbreeding, as an outcome of inbreeding among loci within chromosomes ($F_{IS} = -0.6666$), and the high coefficient of inbreeding ($F = 0.8985$). Chromosome 7 was found to be the most homozygous among the lines

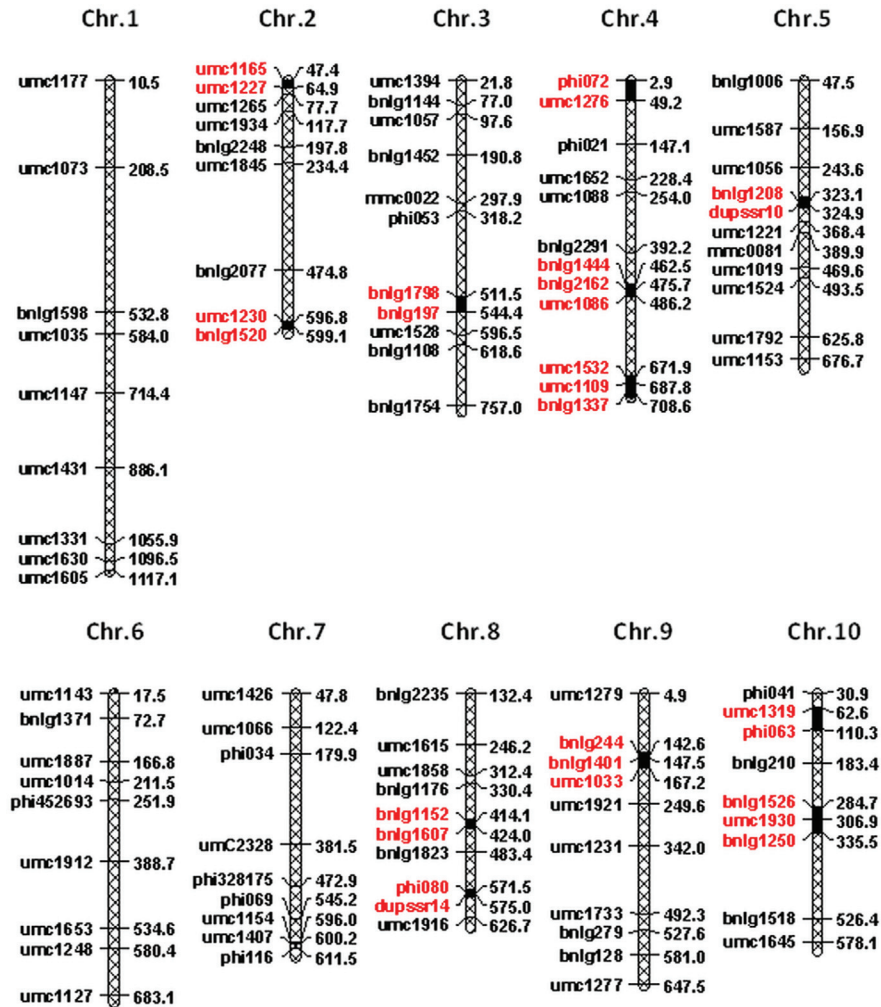


Figure 1 - Microsatellite markers (99) utilized for demarcation of informative chromosomes among tropical sweet corn inbred lines, and their locations in the genome. Distances are shown in centiMorgan units (cM), microsatellites in red are at disequilibrium, and Dark spots on chromosomes indicate *hot LD blocks* with pairs of alleles in LD from different loci separated less than 50 cM on the same chromosome.

studied ($Hom_0 = 0.9715$), and Chromosome 3, the least ($Hom_0 = 0.8928$). Chromosome 7 possessed the lowest rate of gene flow ($Nm = 0.0094$) of all (Table 1).

According to the Shannon's information index (I) and Nei's gene diversity, Chromosome 10 was the most informative ($I = 1.3111$ and $Nei = 0.7033$), and Chromosome 2 the least variable ($I = 0.7616$ and $Nei = 0.4562$). The proportion of total chromosomal inbreeding due to variation among chromosomes, and that due to both inbreeding within the chromosome and variation among chromosomes, indicate the wide range of genetic diversity among the 10 pairs ($F_{ST} = 0.9385$ and $F_{IT} = 0.8972$). This was also shown by the high I and Nei estimates, with mean values of 1.0503 and 0.5850, respectively. Chromosomes 4, 5, 8, 9 and 10 with the highest number of alleles per locus, number of effective alleles, Shannon's information index and Nei's heterozygosity coefficient, were identified as the informative chromosomes in the inbred lines, thus making them appropriate for these specific genetic diversity studies.

446 pairs of alleles were in linkage disequilibrium, of which only 50 were less than 50 cM apart on the same chromosome (Table 2). Chromosome 4 bore the highest number of pairs in LD (122), whereas in Chromosome 6, there were only six. On considering only loci less than 50 cM apart, all were in linkage equilibrium in Chromosomes 1, 6 and 7. Those pairs in linkage disequilibrium, with the shortest distance from each other based on cM, were *bnlg1208* and *dupssr10* (1.80 cM), *umc1230* and *bnlg1520* (2.35 cM), *phi080* and *dupssr14* (3.53 cM), *bnlg1152* and *bnlg1607* (9.86 cM), *bnlg2162* and *umc1086* (10.47 cM), and *umc1165* and *umc1227* (17.48 cM), all located on Chromosomes 5, 2, 8, 4 and 2, respectively (Table 2). The highest conventional measure of linkage disequilibrium between pairs of alleles at two loci was in *umc1165-4* and *umc1227-4*, followed by *umc1109-4* and *bnlg1337-4*, *bnlg1444-4* and *umc1086-4*, *umc1532-4* and *bnlg1337-3*, *bnlg244-6* and *umc1033-6*, and *umc1319-5* and *phi063-5*

Table 1 - Chromosomal variation revealed by microsatellite DNA markers in 13 tropical inbred lines.

Chromosome	n_a	n_e	Hom _e	Hom _o	Hom _e	H _e	H _o	H _e	H _o	I	Nei	F _{IS}	F _{IT}	F _{ST}	Nm	F	LD	LD ≤ 50 cM
Chr.1	3.1250	2.4102	0.9583	0.4614	0.0417	0.5386	0.0262	0.9203	0.5317	-0.5918	0.9216	0.9508	0.0129	0.9226	17.0	0.0	0.0	0.0
Chr.2	2.7778	1.9592	0.9658	0.5379	0.0342	0.4621	0.0199	0.7616	0.4562	-0.7143	0.9251	0.9563	0.0114	0.9260	14.0	4.0	4.0	4.0
Chr.3	3.3636	2.5259	0.8928	0.4192	0.1072	0.5808	0.0606	1.0004	0.5733	-0.7692	0.8130	0.8943	0.0296	0.8154	32.0	4.0	4.0	4.0
Chr.4	3.8333	2.8794	0.9359	0.3993	0.0641	0.6007	0.0356	1.0876	0.5930	-0.8000	0.8919	0.9399	0.0160	0.8933	122.0	14.0	14.0	14.0
Chr.5	4.0909	2.9644	0.8998	0.4081	0.1002	0.5919	0.0657	1.1107	0.5843	-0.5266	0.8284	0.8876	0.0316	0.8307	62.0	6.0	6.0	6.0
Chr.6	3.6250	2.5829	0.9455	0.4306	0.0545	0.5694	0.0294	1.0125	0.5621	-0.8545	0.9031	0.9477	0.0138	0.9043	8.0	0.0	0.0	0.0
Chr.7	2.8889	2.3924	0.9715	0.4417	0.0285	0.5583	0.0199	0.9024	0.5512	-0.4286	0.9483	0.9638	0.0094	0.9490	16.0	0.0	0.0	0.0
Chr.8	3.8889	3.1794	0.9402	0.3343	0.0598	0.6657	0.0375	1.1951	0.6572	-0.5949	0.9090	0.9429	0.0151	0.9102	60.0	9.0	9.0	9.0
Chr.9	4.3333	3.0096	0.9573	0.3542	0.0427	0.6458	0.0271	1.2008	0.6375	-0.5789	0.9330	0.9575	0.0111	0.9339	58.0	6.0	6.0	6.0
Chr.10	4.2222	3.4372	0.9288	0.2875	0.0712	0.7125	0.0394	1.3111	0.7033	-0.8072	0.8987	0.9440	0.0148	0.9001	57.0	7.0	7.0	7.0
Mean	3.6149	2.7341	0.9396	0.4074	0.0604	0.5926	0.0361	1.0503	0.5850	-0.6666	0.8972	0.9385	0.0166	0.8985	44.6	5.0	5.0	5.0
SD	0.5543	0.4386	0.0265	0.0703	0.0265	0.0703	0.0158	0.1642	0.0693	0.1416	0.0438	0.0261	0.0077	0.0432	34.8	4.5	4.5	4.5

n_a = average number of alleles, n_e = number of effective alleles, Hom_e = observed homozygosity, Hom_o = expected homozygosity, H_e = observed heterozygosity, H_o = expected heterozygosity, \hat{H} = average heterozygosity, I = Shannon's information index, Nei = Nei's expected heterozygosity, FIS = proportion of total chromosomal inbreeding due to inbreeding among loci within a chromosome, FIT = total chromosomal inbreeding in a chromosome due to both inbreeding within chromosome and differentiation among chromosomes, FST = proportion of the total inbreeding in a chromosome due to differentiation among chromosomes, Nm = gene flow, F = coefficient of inbreeding, LD = number of pairs of loci in linkage disequilibrium and LD ≤ 50 cM = number of pairs of loci in linkage disequilibrium, less than 50 cM apart.

(all with $r^2 = 0.999$, $\chi^2 = 26.00$, at $p \leq 0.001$) located on Chromosomes 2, 4, 4, 4, 9 and 10, respectively. All were less than 50 cM apart. Thus, linkage between loci on Chromosome 4 was stronger than in the others. In general, Chromosome 4, with the highest number of pairs of alleles at two loci in linkage disequilibrium (122), the highest number of pairs of alleles at two loci in linkage disequilibrium located less than 50 cM apart (14), and the highest overall mean of conventional measure of linkage disequilibrium between pairs of alleles at two loci separated less than 50 cM apart ($r^2 = 0.44$), is a highly desirable candidate for further QTL analysis.

Discussion

Previous studies have shown that corn contains numerous (Senior and Heun, 1993; Senior *et al.*, 1996, 1998), and highly polymorphic microsatellites, even among small samples of corn inbreds (Chin *et al.*, 1996; Taramino and Tingey, 1996). This could be due to their capacity to detect codominantly inherited length polymorphisms of repetitive DNA sequences, and thus discriminate between large numbers of alleles (Matsuoka *et al.*, 2002; Persegui *et al.*, 2011). Variation among the 10 sweet-corn chromosomes, obtained from the inbred lines investigated here, could be a expeditious basis for determining the degree of genetic relationships among different lines, or for detecting genes linked to microsatellite loci. Chromosomes with high variation among inbred lines could be employed in future genetic-diversity research, in which a low number of amplified loci could reveal high diversity. The highest genetic variation among the inbred lines was in Chromosomes 10, 8, 5, 9 and 4. Mohammadi *et al.* (2008) reported that Chromosomes 1, 6 and 9 with 4, 4 and 3 informative markers, respectively, significantly contributed to total variation in yield in corn inbred lines. Chromosomes with high Shannon's information index (I) and high Nei's heterozygosity coefficient (Nei) were found to be liable for a high proportion of total genetic variation, whereby their utility in effectively discriminating inbred lines quickly and at a lower cost. Nevertheless, the high I and Nei values obtained from a particular chromosome might be due to locus heterozygosity, rather than the heterozygosity of corresponding chromosomes coming from different inbred lines. Chromosomes 9, 8, 4 and 10, with over 90% homozygosity, were found to have the highest number of alleles per locus, number of effective alleles, and Shannon's information index, as well as a high Nei's heterozygosity coefficient, thereby indicating their capacity to discriminate among the inbred lines studied. Zhang *et al.* (1994, 1996) investigated the effectiveness of chromosomal variation based on informative markers, by improving the correlations between molecular marker divergence and hybrid performance. Their conclusion was that the relationship between the effectiveness of chromosomal variation based on molecular marker hetero-

Table 2 - Pairs of alleles in linkage disequilibrium from different loci less than 50 cM apart, on the same chromosome.

Chromosome	Alleles in LD	Δ cM	D	D'	r^2	χ^2
Chr.2	<i>umc1230-2</i> and <i>bnlg1520-1</i>	2.35	0.121	0.759	0.262	6.80**
Chr.2	<i>umc1230-2</i> and <i>bnlg1520-2</i>	2.35	-0.108	-0.737	0.211	5.49*
Chr.2	<i>umc1165-3</i> and <i>umc1227-1</i>	17.48	0.062	1.000	0.152	3.96*
Chr.2	<i>umc1165-4</i> and <i>umc1227-4</i>	17.48	0.071	1.000	0.999	26.00**
Chr.3	<i>bnlg1798-1</i> and <i>bnlg197-1</i>	32.90	0.129	0.527	0.278	7.23**
Chr.3	<i>bnlg1798-2</i> and <i>bnlg197-1</i>	32.90	-0.081	-1.000	0.175	4.54*
Chr.3	<i>bnlg1798-7</i> and <i>bnlg197-2</i>	32.90	0.031	1.000	0.168	4.37*
Chr.3	<i>bnlg1798-3</i> and <i>bnlg197-6</i>	32.90	0.050	1.000	0.157	4.09*
Chr.4	<i>bnlg2162-1</i> and <i>umc1086-1</i>	10.47	0.095	0.711	0.207	5.38*
Chr.4	<i>bnlg2162-2</i> and <i>umc1086-1</i>	10.47	-0.114	-1.000	0.270	7.03**
Chr.4	<i>bnlg2162-2</i> and <i>umc1086-3</i>	10.47	0.102	0.726	0.341	8.86**
Chr.4	<i>bnlg2162-4</i> and <i>umc1086-4</i>	10.47	0.064	0.623	0.388	10.10**
Chr.4	<i>umc1109-4</i> and <i>bnlg1337-4</i>	20.76	0.071	1.000	0.999	26.00**
Chr.4	<i>bnlg1444-5</i> and <i>umc1086-3</i>	23.67	0.031	1.000	0.168	4.37*
Chr.4	<i>bnlg1444-6</i> and <i>umc1086-3</i>	23.67	0.062	1.000	0.350	9.10**
Chr.4	<i>bnlg1444-4</i> and <i>umc1086-4</i>	23.67	0.102	1.000	0.999	26.00**
Chr.4	<i>umc1532-2</i> and <i>bnlg1337-1</i>	36.66	0.115	0.600	0.225	5.85*
Chr.4	<i>umc1532-2</i> and <i>bnlg1337-2</i>	36.66	-0.135	-0.636	0.297	7.72**
Chr.4	<i>umc1532-3</i> and <i>bnlg1337-2</i>	36.66	0.089	1.000	0.248	6.45*
Chr.4	<i>umc1532-4</i> and <i>bnlg1337-3</i>	36.66	0.071	1.000	0.999	26.00**
Chr.4	<i>phi072-2</i> and <i>umc1276-2</i>	46.27	0.081	0.414	0.171	4.45*
Chr.4	<i>phi072-5</i> and <i>umc1276-6</i>	46.27	0.036	1.000	0.480	12.48**
Chr.5	<i>bnlg1208-1</i> and <i>dupssr10-1</i>	1.80	0.096	0.556	0.163	4.25*
Chr.5	<i>bnlg1208-3</i> and <i>dupssr10-1</i>	1.80	-0.096	-1.000	0.238	6.19*
Chr.5	<i>bnlg1208-1</i> and <i>dupssr10-2</i>	1.80	-0.080	-1.000	0.159	4.13*
Chr.5	<i>bnlg1208-5</i> and <i>dupssr10-2</i>	1.80	0.059	1.000	0.278	7.22**
Chr.5	<i>bnlg1208-4</i> and <i>dupssr10-3</i>	1.80	0.031	1.000	0.168	4.37*
Chr.5	<i>bnlg1208-3</i> and <i>dupssr10-4</i>	1.80	0.031	1.000	0.168	4.37*
Chr.8	<i>phi080-1</i> and <i>dupssr14-1</i>	3.53	0.102	0.726	0.341	8.86**
Chr.8	<i>phi080-5</i> and <i>dupssr14-2</i>	3.53	0.055	0.587	0.189	4.91*
Chr.8	<i>phi080-5</i> and <i>dupssr14-5</i>	3.53	0.086	0.691	0.364	9.47**
Chr.8	<i>phi080-3</i> and <i>dupssr14-3</i>	3.53	0.151	1.000	0.567	14.73**
Chr.8	<i>phi080-4</i> and <i>dupssr14-4</i>	3.53	0.098	1.000	0.717	18.65**
Chr.8	<i>bnlg1152-1</i> and <i>bnlg1607-1</i>	9.86	0.130	0.772	0.485	12.62**
Chr.8	<i>bnlg1152-4</i> and <i>bnlg1607-2</i>	9.86	0.053	0.606	0.167	4.35*
Chr.8	<i>bnlg1152-4</i> and <i>bnlg1607-4</i>	9.86	0.059	0.409	0.264	6.85**
Chr.8	<i>bnlg1152-5</i> and <i>bnlg1607-6</i>	9.86	0.033	1.000	0.220	5.72*
Chr.9	<i>bnlg1401-3</i> and <i>umc1033-2</i>	19.65	0.056	1.000	0.226	5.88*
Chr.9	<i>bnlg1401-1</i> and <i>umc1033-3</i>	19.65	0.095	1.000	0.291	7.56*
Chr.9	<i>bnlg1401-2</i> and <i>umc1033-4</i>	19.65	0.053	1.000	0.188	4.88*
Chr.9	<i>bnlg1401-6</i> and <i>umc1033-6</i>	19.65	0.036	1.000	0.480	12.48**
Chr.9	<i>bnlg244-3</i> and <i>umc1033-3</i>	24.55	0.080	0.675	0.276	7.18**
Chr.9	<i>bnlg244-6</i> and <i>umc1033-6</i>	24.55	0.071	1.000	0.999	26.00**
Chr.10	<i>umc1930-4</i> and <i>bnlg1250-4</i>	28.60	0.065	1.000	0.458	11.92**
Chr.10	<i>umc1930-3</i> and <i>bnlg1250-2</i>	28.60	0.138	0.782	0.425	11.05**
Chr.10	<i>umc1930-2</i> and <i>bnlg1250-2</i>	28.60	-0.107	-1.000	0.235	6.12*
Chr.10	<i>umc1930-2</i> and <i>bnlg1250-5</i>	28.60	0.053	1.000	0.188	4.88*
Chr.10	<i>umc1319-1</i> and <i>phi063-1</i>	47.70	0.055	0.587	0.189	4.91*
Chr.10	<i>umc1319-5</i> and <i>phi063-5</i>	47.70	0.071	1.000	0.999	26.00**
Chr.10	<i>umc1319-4</i> and <i>phi063-4</i>	47.70	0.055	0.587	0.189	4.91*
Mean		19.944	0.049	0.599	0.364	9.454**

LD = linkage disequilibrium, Δ cM = difference between two alleles in cM, D = classical linkage disequilibrium coefficient measuring deviation from random association between alleles at different loci, D' = standardized linkage disequilibrium coefficient, r^2 = conventional measure of linkage disequilibrium between pairs of alleles at two loci and χ^2 = Chi-square value.

** and * = significant at $p \leq 0.01$ and significant at $p \leq 0.05$, respectively.

zygosity and heterosis is variable, depending on the genetic material used in the study, germplasm diversity, and the complexity of the genetic heterosis base.

Crop yields and their components are complex characters, controlled by multi-genes and environmental factors (Kashiani and Saleh, 2010). Linkage disequilibrium (LD), the non-random association of alleles at closely linked loci, is used to infer the location of gene coding traits by virtue of their correlated appearance with surrounding markers (Zavattari *et al.*, 2000). In contrast to animals and humans, little information is available on linkage disequilibrium in crop species, with most research concentrating on *Arabidopsis thaliana* and field corn (Flint-Garcia *et al.*, 2003; Stich *et al.*, 2005, 2006). Since homogeneity was predominant, analysis was concentrated on linkage disequilibrium among the inbred lines, and not within a single one or group. The high incidence of linkage disequilibrium (446 pairs of loci in LD) implied that the extent of LD between microsatellite markers could possibly facilitate the detection of marker-phenotype associations in a genome scan. This value, although in agreement with the results of Liu *et al.* (2003), was considerably higher than that reported by Remington *et al.* (2001), and lower than that reported by Stich *et al.* (2005). The discrepancy between the present results and those above mentioned can presumably be attributed to marker density and the number of inbred lines evaluated. Marker density used in this study, although much higher than that reported by Remington *et al.* (2001), was approximately equal to that used by both Liu *et al.* (2003) and Stich *et al.* (2005). However, the number of inbred lines used in the current study was lower than that used by Remington *et al.* (2001), Liu *et al.* (2003) and Stich *et al.* (2005).

It has been theoretically shown that selection acting on a monogenic trait generates LD around the gene. Furthermore, if selection involves an oligogenic or polygenic trait, LD is generated, not only between linked genes, but also between unlinked genes coding for the trait. During development of the inbred lines used here, selection, which took place simultaneously for several traits with high heritability estimates and significant correlations with yield, could consequently have also generated LD between the genes influencing different traits. Therefore, the high proportion of observed LD in this study was generated by selection potential. It has been suggested that selection, relatedness, population stratification and genetic drift are important forces generating and conserving LD between pairs of genome-widely distributed microsatellite markers (Stich *et al.*, 2005). Furthermore, the increasing physical distance between pairs of markers was found to decrease LD, due to crossingover (Talbert and Henikoff, 2010). However, no correlations could be found between physical distance and LD in corn Centromere 2 that had been fully sequenced (Wolfgruber *et al.*, 2009), possibly through both the conversion of one marker ordinarily having no effect on

the coinheritance of its neighbours, and crossingover having been suppressed around centromeres.

In order to avoid disequilibrium between loci influencing several traits, only LD between loci less than 50 cM apart on the same chromosome was considered. Under these conditions, 66.7% of Chromosome 4 loci were amplified in LD, whereas only 18.2% of Chromosome 3 and 5 loci were. Furthermore, Chromosome 4 was found to have the highest number of linkages among loci separated by either more or less than 50 cM (144 and 14 pairs in LD, respectively), thereby indicating the high potential utility of this chromosome for investigating marker-phenotype association and QTL. The presence of QTLs for Chromosome 4 corn agronomic traits has been amply reported (Sourdille *et al.*, 1996; Lubberstedt *et al.*, 1997; Ribaut *et al.*, 1997; Khairallah *et al.*, 1998; Yousef and Juvik, 2002; Juvik *et al.*, 2003; Messmer *et al.*, 2009). Furthermore, since they possess a considerable number of loci in disequilibrium (9, 7, 6 and 6, respectively), Chromosomes 8, 10, 9 and 5 were also identified as candidate chromosomes for further QTL studies. Based on the latest information from Maize GDB (March, 2011), 768 out of 1716 QTL reported for corn agronomic traits were found to be on Chromosomes 4, 5, 8, 9 and 10 (114, 179, 189, 171 and 115, respectively). Among the QTL found on Chromosomes 4, 5, 8, 9 and 10, 357 (46.48%) were found to have contributed to yield (Ho *et al.*, 2002; Landi *et al.*, 2002; Sibov *et al.*, 2003; Moreau *et al.*, 2004; Messmer *et al.*, 2009; Hu *et al.*, 2010a,b). thus indicating that, in the present study, the microsatellites in LD on these same Chromosomes are useful for detecting yield-marker association for further marker-assisted selection of inbred lines and their F₁ single-cross progenies.

Finally, microsatellites were found to be informative markers for revealing chromosomal variation among the tropical sweet corn inbred-lines studied herein. Chromosomes 4, 5, 8, 9 and 10 were found to possess a high proportion of specific genetic variation, thus revealing their appropriateness for genetic diversity studies. Chromosome 4, with the highest number of loci in linkage disequilibrium, is the most appropriate for marker-phenotype association and QTL mapping for yields and yield-related traits, with Chromosomes 5, 8, 9 and 10 as runner-ups.

Acknowledgments

The authors gratefully acknowledge the financial support for research under e-Science Fund (Project No.: 05-01-04-SF0700) from the Ministry of Science, Technology and Innovation, Malaysia (MOSTI).

References

- Anderson E and Brown WL (1952) Origin of corn belt maize and its genetic significance. In: Gowen JW (ed) Heterosis: A Record of Researches Directed Toward Explaining and Utilizing the Vigor of Hybrids. Iowa State College Press, Ames, pp 124-148.

- Austin DF, Lee M and Veldboom LR (2001) Genetic mapping in maize with hybrid progeny across testers and generations: Plant height and flowering. *Theor Appl Genet* 102:163-176.
- Barcaccia G (2010) Molecular markers for characterizing and conserving crop plant germplasm. In: Jain, SM and Brar DS (eds), *Molecular Techniques in Crop Improvement*. Springer, New York, pp 231-254.
- Burr B, Burr FA, Thompson KH, Albertson MC and Stuber CW (1988) Gene mapping with recombinant inbreds in maize. *Genetics* 118:519-526.
- Chin EC, Senior ML, Shu H and Smith JS (1996) Maize simple repetitive DNA sequences: Abundance and allele variation. *Genome* 39:866-873.
- Excoffier L and Lischer HEL (2010) Arlequin suite ver. 3.5: A new series of programs to perform population genetics analyses under Linux and Windows. *Mol Ecol Res* 10:564-567.
- Flint-Garcia SA, Thornsberry JM and Buckler Vth ES (2003) Structure of linkage disequilibrium in plants. *Annu Rev Plant Biol* 54:357-374.
- Ho C, McCouch R and Smith E (2002) Improvement of hybrid yield by advanced backcross QTL analysis in elite maize. *Theor Appl Genet* 105:440-448.
- Hu J, Yang Z, Yu Y and Li G (2010a) QTL mapping for pericarp thickness in sweet corn. *Maize Gen Conf* 52:228.
- Hu J, Yang ZY, Yu Y and Li G (2010b) Identification of QTL for yield-related traits induced by space flight in sweet corn. *Maize Gen Conf* 52:209.
- Juvik JA, Yousef GG, Han TH, Tadmor Y, Azanza F, Tracy WF, BarZur A and Rocheford TR (2003) QTL influencing kernel chemical composition and seedling stand establishment in sweet corn with the shrunken2 and sugary enhancer1 endosperm mutations. *Anglais* 128:864-875.
- Kashiani P and Saleh G (2010) Estimation of genetic correlations on sweet corn inbred lines using SAS mixed model. *Am J Agric Biol Sci* 5:309-314.
- Kashiani P, Saleh G, Abdullah NAP and Abdullah SN (2010) Variation and genetic studies on selected sweet corn inbred lines. *Asian J Crop Sci* 2:78-84.
- Kashiani P, Saleh G, Osman M and Habibi D (2011) Sweet corn yield response to alternate furrow irrigation methods under different planting densities in a semi-arid climatic condition. *Afr J Agric Res* 6:1032-1040.
- Khairallah MM, Bohn M, Jiang C, Deutsch JA, Jewell DC, Mihm JA, Melchinger AE, González-De-León D and Hoisington DA (1998) Molecular mapping of QTL for southwestern corn borer resistance, plant height and flowering in tropical maize. *Plant Breed* 117:309-318.
- Kimura M and Crow JF (1964) The number of alleles that can be maintained in a finite population. *Genetics* 49:725-738.
- Landi P, Sanguineti MC, Darrah LL, Giuhani MM, Salvi S, Conti S and Tuberosa R (2002) Detection of QTLs for vertical root pulling resistance in maize and overlap with QTLs for root traits in hydroponics and for grain yield under different water regimes. *Maydica* 47:233-243.
- Levene H (1949) On a matching problem arising in genetics. *Ann Math Stat* 20:91-94.
- Lewontin RC (1972) Testing the theory of natural selection. *Nature* 236:181-182.
- Lewontin RC and Kojima K (1960) The evolutionary dynamics of complex polymorphisms. *Evolution* 14:458-472.
- Liu K, Goodman M, Muse S, Smith JS, Buckler E and Doebley J (2003) Genetic structure and diversity among maize inbred lines as inferred from DNA microsatellites. *Genetics* 165:2117-2128.
- Lubberstedt T, Melchinger AE, Schoen CC, Utz H and Klein D (1997) QTL mapping in testcrosses of European flint lines of maize: I. Comparison of different testers for forage yield traits. *Crop Sci* 37:921-931.
- Lukas FK and Donald MW (2002) Inbreeding effects in wild populations. *Trends Ecol Evol* 17:230-241.
- Matsuoka Y, Mitchell SE, Kresovich S, Goodman M and Doebley J (2002) Microsatellites in *zea* – Variability, patterns of mutations, and use for evolutionary studies. *Theor Appl Genet* 104:436-450.
- Messmer R, Fracheboud Y, Banziger M, Vargas M, Stamp P and Ribaut JM (2009) Drought stress and tropical maize: QTL-by-environment interactions and stability of QTLs across environments for yield components and secondary traits. *Theor Appl Genet* 119:913-930.
- Mohammadi SA, Prasanna BM, Sudan C and Singh NN (2008) SSR heterogenic patterns of maize parental lines and prediction of hybrid performance. *Biotechnol Biotech Eq* 22:541-547.
- Moreau L, Charcosset A and Gallais A (2004) Use of trial clustering to study QTL x environment effects for grain yield and related traits in maize. *Theor Appl Genet* 110:92-105.
- Naeem R, Dahleen L and Mirza B (2011) Genetic differentiation and geographical Relationship of Asian barley landraces using SSRs. *Genet Mol Biol* 34:268-273.
- Nei M (1973) Analysis of gene diversity in subdivided populations. *Proc Natl Acad Sci USA* 70:3321-3323.
- Nei M (1987) *Molecular Evolutionary Genetics*. Columbia University Press, New York, 512 pp.
- Perseguini JM KC, Chioratto AF, Zucchi MI, Colombo CA, Carbonell SAM, Mondego JMC, Gazaffi R, Garcia AAF, de Campos T, de Souza AP, *et al.* (2011) Genetic diversity in cultivated carioca common beans based on molecular marker analysis. *Genet Mol Biol* 34:88-102.
- Remington DL, Thornsberry JM, Matsuoka Y, Wilson LM, Whitt SR, Doebley J, Kresovich S, Goodman MM and Buckler ES (2001) Structure of linkage disequilibrium and phenotypic associations in the maize genome. *Proc Natl Acad Sci USA* 98:11479-11484.
- Ribaut JM, Jiang C, Gonzalez-de-Leon D, Edmeades GO and Hoisington DA (1997) Identification of quantitative trait loci under drought conditions in tropical maize. 2. Yield components and marker-assisted selection strategies. *Theor Appl Genet* 94:887-896.
- Saleh GB, Min TD, Noordin WD, Halim RA and Anuar AR (2010) Spatial variability of soil and plant nutrients and their influence on maize grain yield. *J Food Agric Environ* 8:1313-1325.
- Senior ML and Heun M (1993) Mapping maize microsatellites and polymerase chain reaction confirmation of the targeted repeats using a CT primer. *Genome* 36:884-889.
- Senior ML, Chin ECL, Lee M, Smith JSC and Stuber CW (1996) Simple sequence repeat markers developed from maize sequences found in the GENBANK database: Map construction. *Crop Sci* 36:1676-1683.
- Senior ML, Murphy JP, Goodman MM and Stuber CW (1998) Utility of SSRs for determining genetic similarities and rela-

- tionships in maize using an agarose gel system. *Crop Sci* 38:1088-1098.
- Sibov ST, de Souza Jr CL, Garcia AA, Silva AR, Garcia AF, Mangolin CA, Benchimol LL and de Souza AP (2003) Molecular mapping in tropical maize (*Zea mays* L.) using microsatellite markers. 2. Quantitative trait loci (QTL) for grain yield, plant height, ear height and grain moisture. *Hereditas* 139:107-115.
- Sourdille P, Baud S and Leroy P (1996) Detection of linkage between RFLP markers and genes affecting anthocyanin pigmentation in maize (*Zea mays* L.). *Euphytica* 91:21-30.
- Srdic J, Nikolic A and Pajic Z (2008) SSR markers in characterisation of sweet corn inbred lines. *Genetika* 40:169-177.
- Stich B, Melchinger AE, Frisch M, Maurer HP, Heckenberger M and Reif JC (2005) Linkage disequilibrium in European elite maize germplasm investigated with SSRs. *Theor Appl Genet* 111:723-730.
- Stich B, Maurer H, Melchinger A, Frisch M, Heckenberger M, van der Voort J, Peleman J, Sørensen A and Reif J (2006) Comparison of linkage disequilibrium in elite European maize inbred lines using AFLP and SSR markers. *Mol Breed* 17:217-226.
- Talbert PB and Henikoff S (2010) Centromeres convert but don't cross. *PLoS Biology* 8:e1000326.
- Taramino G and Tingey S (1996) Simple sequence repeats for germplasm analysis and mapping in maize. *Genome* 39:277-287.
- Tautz D and Renz M (1984) Simple sequences are ubiquitous repetitive components of eukaryotic genomes. *Nucleic Acids Res* 12:4127-4138.
- Troyer AF (2001) Temperate corn. In: Hallauer AR (ed) *Specialty Corns*. CRC Press, Boca Raton, pp 393-466.
- Wolfgruber TK, Sharma A, Schneider KL, Albert PS, Koo DH, Shi J, Gao Z, Han F, Lee H, Xu R, *et al.* (2009) Maize centromere structure and evolution: Sequence analysis of centromeres 2 and 5 reveals dynamic loci shaped primarily by retrotransposons. *PLoS Genetics* 5:20.
- Wright S (1978) *Evolution and the genetics of populations: Variability within and among populations*. University of Chicago Press, Chicago, 590 pp.
- Yeh FC, Yang RC and Boyle T (1999) Popgene: Microsoft Windows-based freeware for population genetic analysis release 1.31, University of Alberta, Alberta.
- Yousef GG and Juvik JA (2002) Enhancement of seedling emergence in sweet corn by marker-assisted backcrossing of beneficial QTL. *Crop Sci* 42:96-104.
- Zavattari P, Deidda E, Whalen M, Lampis R, Mulargia A, Loddo M, Eaves I, Mastio G, Todd JA and Cucca F (2000) Major factors influencing linkage disequilibrium by analysis of different chromosome regions in distinct populations: Demography, chromosome recombination frequency and selection. *Hum Mol Genet* 9:2947-2957.
- Zhang Q, Gao YJ, Yang SH, Ragab RA, Maroof MAS and Li ZB (1994) A diallel analysis of heterosis in elite hybrid rice based on RFLPs and microsatellites. *Theor Appl Genet* 89:185-192.
- Zhang Q, Zhou Z, Yang G, Xu C, Liu K and Maroof SM (1996) Molecular marker heterozygosity and hybrid performance in indica and japonica rice. *Theor Appl Genet* 93:1218-1224.

Internet Resources

Maize genome database (MaizeGDB),
<http://www.maizegdb.org.php> (accessed July 28, 2011).

Associate Editor: Everaldo Gonçalves de Barros

License information: This is an open-access article distributed under the terms of the Creative Commons Attribution License, which permits unrestricted use, distribution, and reproduction in any medium, provided the original work is properly cited.