






Cardiovascular mortality in peritoneal dialysis: the impact of mineral disorders

Mortalidade cardiovascular em diálise peritoneal: o impacto dos distúrbios minerais

Authors

César Truys¹ 
 Melani Custodio¹ 
 Roberto Pecoit-Filho² 
 Thyago Proenca de Moraes² 
 Vanda Jorgetti¹ 

¹Universidade de São Paulo, Laboratório de Fisiopatologia Renal, São Paulo, SP, Brasil.

²Pontifícia Universidade Católica do Paraná, Faculdade de Medicina, Curitiba, PR, Brasil.

ABSTRACT

Introduction: Mineral and bone disorders (MBD) are associated with higher mortality in dialysis patients. The main guidelines related to the subject, Kidney Disease Outcomes Quality Initiative (KDOQI) and Kidney Disease: Improving Global Outcomes (KDIGO), were elaborated based on published information from hemodialysis participants. The aim of our study was to evaluate the impact of calcium (Ca), phosphorus (P), and parathyroid hormone (PTH) (according to guideline ranges from KDOQI and KDIGO) on the cardiovascular mortality of peritoneal dialysis (PD) patients. **Methods:** We used the BRAZPDII database, an observational multi-centric prospective study, which assessed participants on PD between December 2004 and January 2011. Amongst 9,905 participants included in this database, we analyzed 4424 participants who were on PD for at least 6 months. The appropriate confounding variables were entered into the model. Serum levels of Ca, P, and PTH were the variables of interest for the purposes of the current study. **Results:** We found a significant association between high P serum levels, categorized by KDOQI and KDIGO (P above 5.5 mg/dL), and cardiovascular survival ($p < 0.01$). Likewise, a compelling association was found between lower levels of PTH, categorized by guidelines (KDOQI and KDIGO - PTH less than 150 pg/mL, $p < 0.01$), and cardiovascular survival. **Conclusion:** In conclusion, levels of P above and PTH below the values proposed by KDOQI and KDIGO were associated with cardiovascular mortality in PD patients.

Keywords: Phosphates; Renal Insufficiency, Chronic; Mortality; Peritoneal Dialysis.

RESUMO

Introdução: Os distúrbios minerais e ósseos (DMO) estão associados a maior mortalidade em pacientes de diálise. As principais diretrizes relacionadas ao assunto, *Kidney Disease Outcomes Quality Initiative* (KDOQI) e *Kidney Disease: Improving Global Outcomes* (KDIGO) foram elaboradas com base em informações publicadas de pacientes em hemodiálise. O objetivo do nosso estudo foi avaliar o impacto do cálcio (Ca), fósforo (P) e paratormônio (PTH) (de acordo com as faixas propostas pelas diretrizes do KDOQI e KDIGO) na mortalidade cardiovascular de pacientes em diálise peritoneal (DP). **Métodos:** Utilizamos o banco de dados BRAZPDII, um estudo prospectivo observacional multicêntrico, que avaliou participantes de DP entre dezembro de 2004 e janeiro de 2011. Entre os 9.905 participantes incluídos neste banco de dados, analisamos 4.424 que estavam em DP há pelo menos 6 meses. As variáveis de confusão apropriadas foram inseridas no modelo. Os níveis séricos de Ca, P e PTH foram as variáveis de interesse para os fins do presente estudo. **Resultados:** Encontramos uma associação significativa entre níveis séricos de P elevados, categorizados por KDOQI e KDIGO (P acima de 5,5 mg/dL), e sobrevivência cardiovascular ($p < 0,01$). Da mesma forma, foi encontrada uma associação convincente entre níveis mais baixos de PTH, categorizados por diretrizes (KDOQI e KDIGO - PTH inferior a 150 pg/mL, $p < 0,01$), e sobrevivência cardiovascular. **Conclusão:** Em conclusão, níveis de P acima e PTH abaixo dos valores propostos por KDOQI e KDIGO foram associados à mortalidade cardiovascular em pacientes de DP.

Descritores: Fosfatos; Insuficiência Renal Crônica; Mortalidade; Diálise Peritoneal.

Submitted on: 02/26/2020.

Approved on: 11/04/2020.

Correspondence to:

Vanda Jorgetti.
E-mail: vandajor@usp.br

DOI: <https://doi.org/10.1590/2175-8239-JBN-2020-0040>



INTRODUCTION

Peritoneal dialysis (PD) is an important alternative for the treatment of patients with chronic kidney disease (CKD), with potential advantages from a clinical, logistical, and cost perspectives in relation to hemodialysis (HD)¹. Cardiovascular disease accounts for approximately half of the cases of death and one third of the hospitalizations of these patients². Mineral and bone disorders (MBD) including abnormalities of serum calcium (Ca), phosphorus (P), parathyroid hormone (PTH), vitamin D, and fibroblast growth factor 23 (FGF-23), and also abnormalities in bone turnover and extra-osseous calcifications contribute to the morbidity and to poor outcomes in these patients³⁻⁵.

Several registries and cohort studies in the dialysis population have contributed to the development of the Kidney Disease Outcomes Quality Initiative (KDOQI) and Kidney Disease: Improving Global Outcomes (KDIGO) guidelines for the management of MBD⁶⁻¹¹. These guidelines are vastly based on studies focused on the HD population. The purpose of this research was to determine the relationship between the values recommended by these guidelines for Ca, P, and PTH, and cardiovascular mortality.

PATIENTS AND METHODS

The Brazilian Peritoneal Dialysis Multicenter Study II (BRAZPD II) is a national study involving a representative sample of PD participants, which collected information between December 2004 and January 2011. This database contains demographic, clinical, and laboratory information including the routine monitoring of MBD of 9,905 participants on PD from 122 centers across the country. The data were entered by each center using PDnet[®] platform. Based on these characteristics, BRAZPD II represents a good opportunity to analyze the impact of the current recommendation for targets related to MBD on clinical outcomes of PD participants¹². Briefly, after being selected to participate in the study, each clinic submitted the project to the local ethic committee, and all patients signed an informed consent.

We enrolled all 4,424 incident patients on PD for at least 6 months. The endpoint event was death from all causes, and then death from cardiovascular

causes (coronary disease and cardiac failure). Causes of censoring were transfer to hemodialysis or kidney transplantation or renal function recovery or transfer to another dialysis center.

STATISTICAL ANALYSIS

The results are expressed in mean or median with standard deviation or interquartile, according to Shapiro-Wilk test.

Cox and competing risk models were used to evaluate the strength of the associations between Ca, P, PTH, and death (from all causes and death from cardiovascular causes). The following variables were included in this analysis: age, diabetes mellitus (DM), coronary artery disease (CAD), residual diuresis (RD - presence and absence), and albumin. The variables of interest were Ca, P, and PTH.

Graphs were developed to compare the groups for phosphorus and PTH, categorized by the guidelines, calculated using a Cox proportional hazard regression model.

The statistical test used was log-rank test. Statistical significance was defined as $p < 0.05$. We used R-project software version 3.5.2 for analyses.

RESULTS

Demographic and clinical characteristics, risk factors, and results of the biochemical analysis of participants included in the study are described in Table 1. A total of 4,424 patients were analyzed, the average age was 59 years, and other demographic information are as follows: half (52%) of the patients ($n = 2300$) were female, 62.8% were white, more than 75% of patients were hypertensive, 55% were diabetic, 21.8% of patients had CAD, average BMI was 24 kg/m² and 70% had RD. Median serum Ca was 9.5 mg/dL, P was 4.8 mg/dL, PTH 256 pg/mL, and albumin 3.4 mg/dL. Maximum follow up was 72 months and median follow up was 17 months.

We constructed two cox-models based on ranges of Ca, P, and PTH proposed by KDOQI and KDIGO (Ca: 8.4-9.5 mg/dL, P: 3.5-5.5 mg/dL, and PTH: 150-300 pg/mL proposed by KDOQI, and Ca: 8.4-10.2 mg/dL, P: 3.5-5.5 mg/dL and PTH: 150-600 pg/mL proposed by KDIGO). The analysis shows significance between all-causes of mortality and patients with Ca and P below the minimum

TABLE 1 BASELINE PATIENT CHARACTERISTICS

n	4424
Demographic parameters	
Age, years	59.8 [49.2-70.6]
Gender (female), %	52.9
Race (Caucasian), %	62.8
Hypertension (no), %	23.4
Diabetes (yes), %	55.3
CAD (yes), %	21.8
BMI, Kg/m ²	24.1 [21.7-27.3]
Residual diuresis (no), %	30.1
PD modality (APD), %	45.6
Calcium dialysate (2.5 mEq/L), %	8.6
Laboratory parameters	
Calcium, mg/dL	9.5 [9.133-9.945]
Phosphorus, mg/dL	4.8 [4.183-5.643]
PTH, pg/mL	256 [134.85-492.413]
Albumin, mg/mL	3.4 [3.1-3.8]
Follow up, months	17.2 [10.2-28.4]
Outcomes	
Cause of death (cardiovascular), %	6.8
Death event, %	18.2

CAD: coronary artery disease; BMI: body mass index; PD: Peritoneal Dialysis; PTH: Parathormone.

values of both guidelines (KDOQI and KDIGO). The results were plotted in Figure 1.

We divided patients into cardiovascular and non-cardiovascular death, and the results are shown in Table 2. Gender, race, diabetes, CAD, RD, serum P, PTH, and albumin were associated with cardiovascular mortality by univariate analysis. To assess the association between Ca, P, and PTH (by KDOQI and KDIGO ranges) and cardiovascular mortality, two models were constructed and plotted in Figure 2. We found significantly increased cardiovascular mortality associated with serum P levels above and serum PTH levels below KDOQI and KDIGO ranges. Figures 3 and 4 show a significant difference between P and PTH levels (within or outside of KDOQI and KDIGO ranges) associated with cardiovascular mortality, and competing risk analysis confirmed these results taking into account other causes of death and censored patients (Table 3).

DISCUSSION

MBD has an important impact on dialysis patients' morbidity and mortality. This is the first study attempting to analyze the impact of current

recommended target levels of Ca, P, and PTH on cardiovascular mortality of PD patients. It was concluded that the levels of P above and PTH below those proposed by KDOQI and KDIGO dealing with MBD-CKD are associated with cardiovascular mortality in PD patients.

MBD AND MORTALITY

The development of the KDOQI and KDIGO guidelines has contributed to improve the management of CKD-MBD. However, both HD and PD patients find it difficult to achieve the goals determined by these guidelines and complications are still present^{10,11}. KDIGO cited several studies that showed the association between CKD-MBD and all-cause mortality and cardiovascular mortality, and most of them used Ca, P, and PTH as a marker of MBD¹³⁻¹⁶. The mechanism of vascular calcification is still unclear. However, the enrollment of high levels of Ca and P are taken for granted. High and low PTH levels are associated with vascular calcification, and low PTH levels can explain high mortality in these patients, especially if we consider that lower levels of PTH are more common in PD patients.

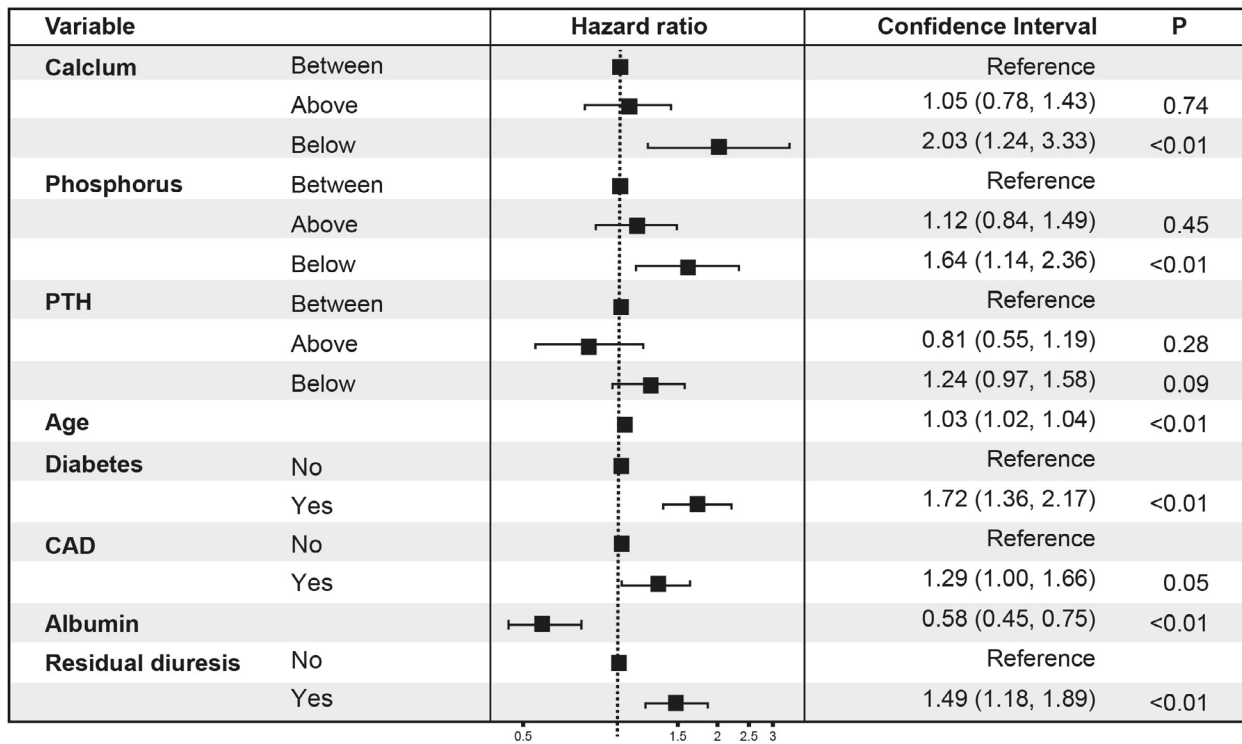
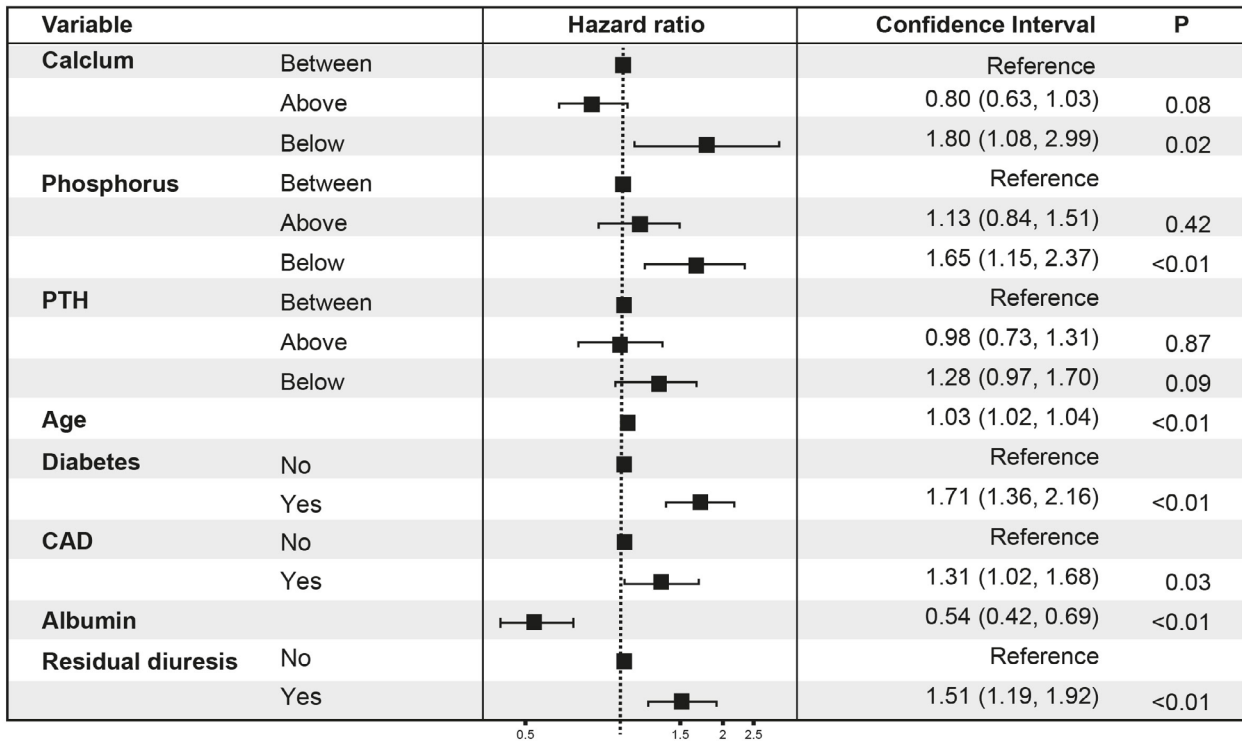


Figure 1. Groups analyses. HR for all causes of mortality from multivariable Cox models and log-rank test, comparing patients with values between versus below and above guideline ranges for calcium, phosphorus, and parathormone, according to KDOQI (left) and KDIGO (right).

CALCIUM

Several factors have been speculated to be triggers of vascular smooth muscle cell (VSMC) osteogenic differentiation. Osteogenic differentiation occurs

when VSMCs are exposed to high levels of Ca, which explains the association between high levels of serum Ca and the presence of vascular calcification in CKD patients^{17,18}. Publications that supported

TABLE 2 BASELINE CHARACTERISTICS OF PATIENTS ACCORDING TO CARDIOVASCULAR DEATH

Variable	Non cardiovascular death	Cardiovascular death	p-value
n	4124	300	
Demographic parameters			
Age, years	59.2 [48.5 - 70.1]	68 [58.4-75.1]	< 0.01
Gender (female), %	53.3	47.7	0.06
Race (white), %	62.4	68.7	0.02
Hypertension (no), %	76.6	76.3	0.25
Diabetes (yes), %	43.6	58.3	< 0.01
CAD (no), %	20.6	37.3	< 0.01
BMI, Kg/m ²	24.1 [21.6 - 27.2]	24.5 [22.1-28.1]	0.16
Residual diuresis (no), %	70.1	65.3	0.04
Laboratory parameters			
Calcium, mg/dL	9.5 [9.1-9.9]	9.6 [9.2-10.1]	0.32
Phosphorus, mg/dL	4.8 [4.2 - 5.6]	4.7 [4-5.5]	< 0.01
PTH, pg/mL	263 [138 - 493]	190 [102.9-428]	0.01
Albumin, mg/mL	3.5 [3.1 - 3.8]	3.4 [3-3.7]	0.09
Follow up, months	17.2 [10.2 - 28.4]	15 [9.6-25.4]	< 0.01
Death, %	12.3	100	

CAD: coronary artery disease; BMI: body mass index; PTH: Parathormone.

the KDOQI guideline did not analyze the Ca value alone as a determining factor, but considered the product Ca x P to define it. Until the years 2000 several studies have valued the Ca x P product, which should not exceed 55, at the risk of favoring vascular calcification and decreasing survival¹⁹. However, this type of calcification, common in CKD participants, is a complex and regulated process involving inhibitory and inductive molecules in addition to the differentiation of smooth muscle cells that assume the osteoblast phenotype promoting calcification²⁰. This new knowledge diminished the importance attributed to the Ca x P product in the process of vascular calcification^{21,22}. Studies with low risk of bias quoted by KDIGO found an association between low levels of Ca and mortality in line with our findings and opposing the theory of high VSMCs exposition to high Ca concentration as trigger of osteogenic differentiation¹¹. Tentori et al. showed an association between low and high levels of Ca and mortality, and greatest mortality associated with high levels of Ca; this was the largest study (n = 25,529) cited by KDIGO²³.

PHOSPHORUS

Hyperphosphatemia is the most important inducer of vascular calcification. Type III sodium-dependent

Pi co-transporters (Pit-1) exposure to elevated P concentration activate signaling pathways and contribute to vascular calcification. Removal of P in PD is similar to patients on HD, approximately 2400 mg/week, done by diffusion and convection²⁴⁻²⁶. KDOQI and KDIGO proposed a similar range of P, and some studies have found association between this range and cardiovascular mortality, all of them in HD patients. Tentori et al. found the association in the largest study (n = 25,529), and Kimata et al. (n = 5,041) and Eddington et al. (n = 1203) have found similar associations between P and cardiovascular mortality also in HD patients, all of them categorized as medium risk of bias by KDIGO^{23,27,28}.

PTH

Evidence suggests that PTH may be an independent risk factor for cardiovascular mortality. A study with more than 40,000 participants on HD found an association between mortality and PTH levels above 600 pg/mL²⁵. A study that followed 958 participants for a mean period of 9.7 years, with creatinine clearance around 62 ± 14 mL/min/1.73 m², indicated PTH as a predictor of mortality due to cardiovascular causes²⁹, based on the fact that elevated PTH acts on the myocardium inducing left ventricular hypertrophy, fibrosis, and vascular calcification³⁰.

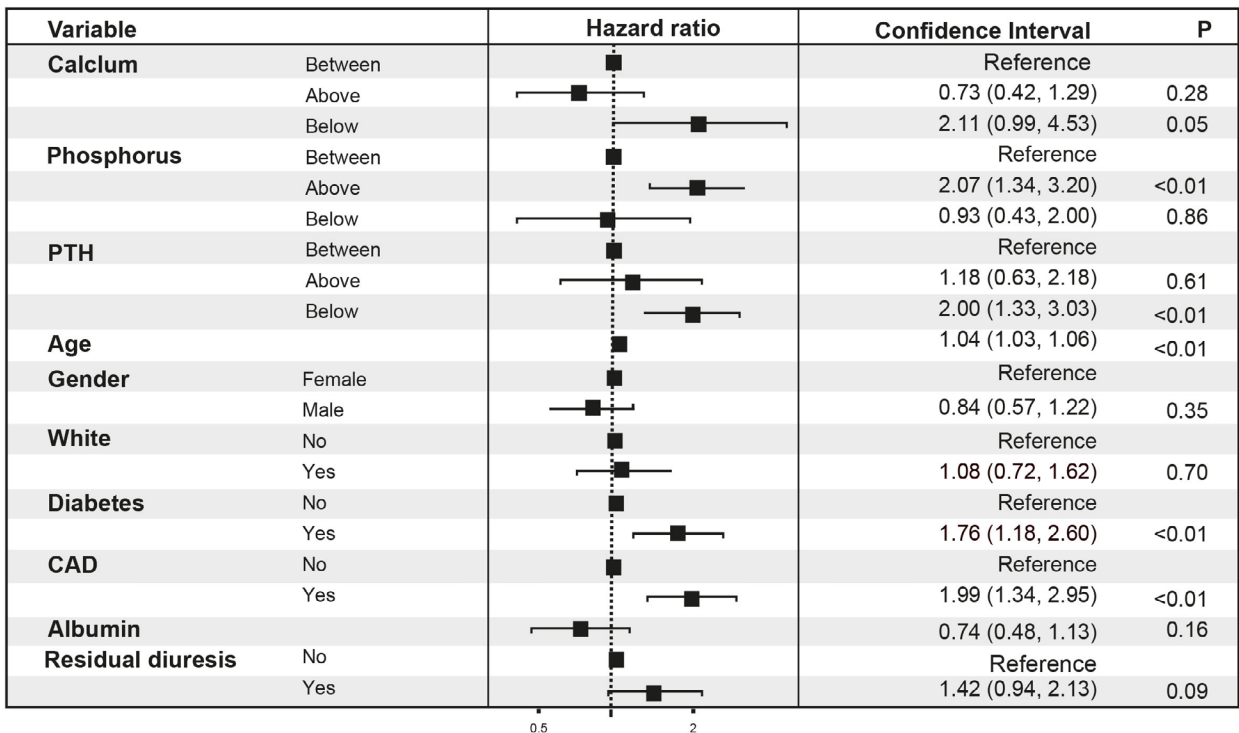
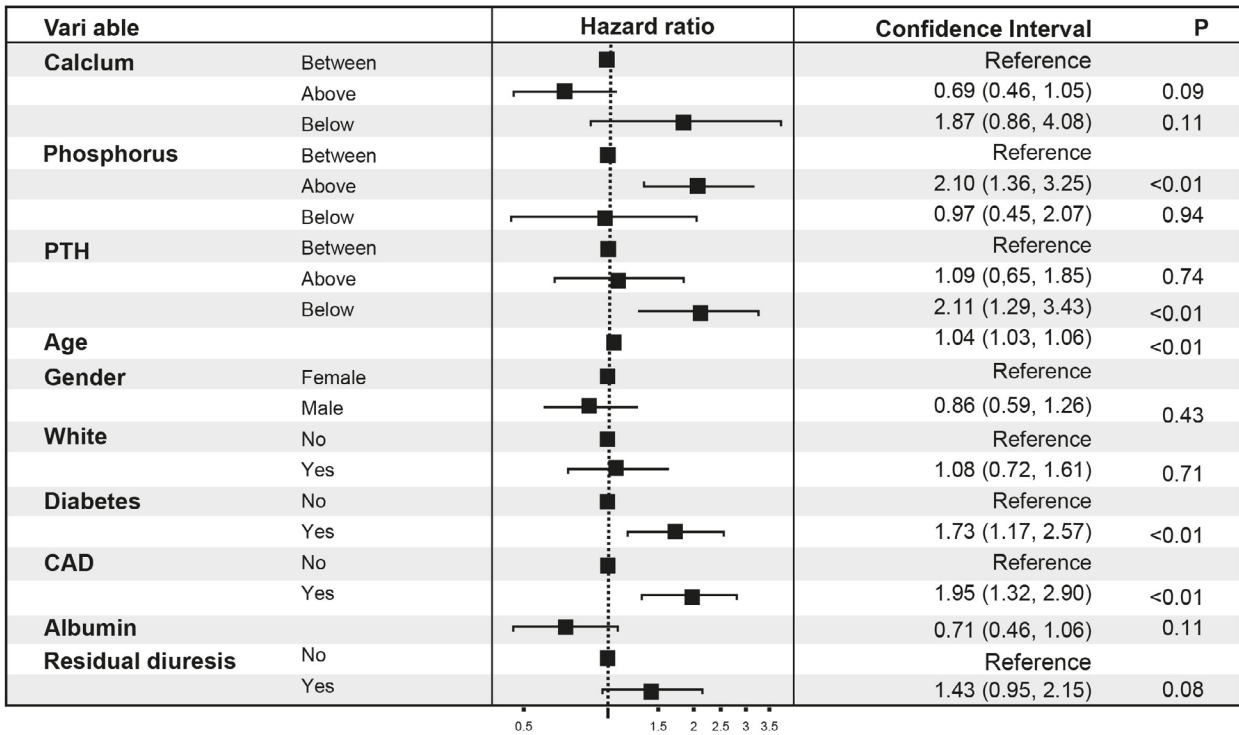


Figure 2. Group analyses. Hazard ratio for cardiovascular mortality from multivariable Cox models and log-rank test, comparing patients with values between versus below and above guideline values for calcium, phosphorus, and parathormone according to KDOQI (left) and KDIGO (right).

KDOQI did not evaluate survival due to PTH levels, but rather the values of this hormone which were able to discriminate the type of bone turnover were obtained from the histomorphometric analysis

of bone biopsies, reaching the conclusion that this value was between 100 and 300 pg/mL¹⁰. Wang et al. analyzed bone biopsies from 175 HD participants demonstrating that PTH levels between 100 and

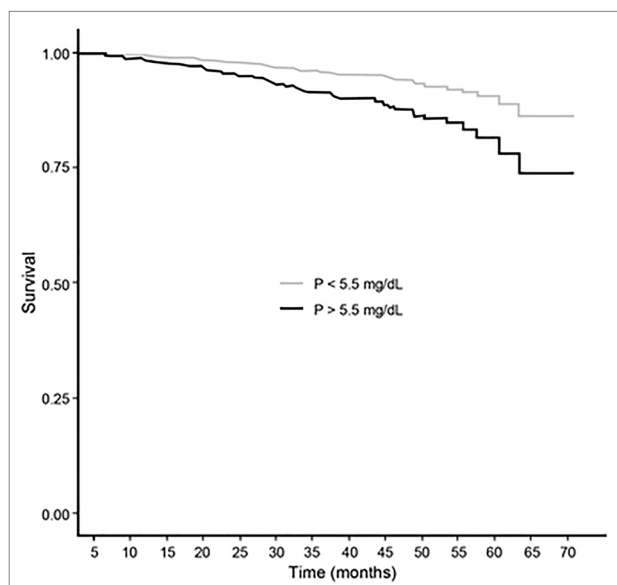


Figure 3. Cox regression survival curves for cardiovascular mortality of patients with phosphorus value below versus above 5.5 mg/dL (adjusted for: calcium, parathormone, age, gender, race, diabetes, coronary artery disease, albumin and residual diuresis). Hazard ratio: 2.08 (1.36–3.18), p-value: < 0.01. Log-rank test.

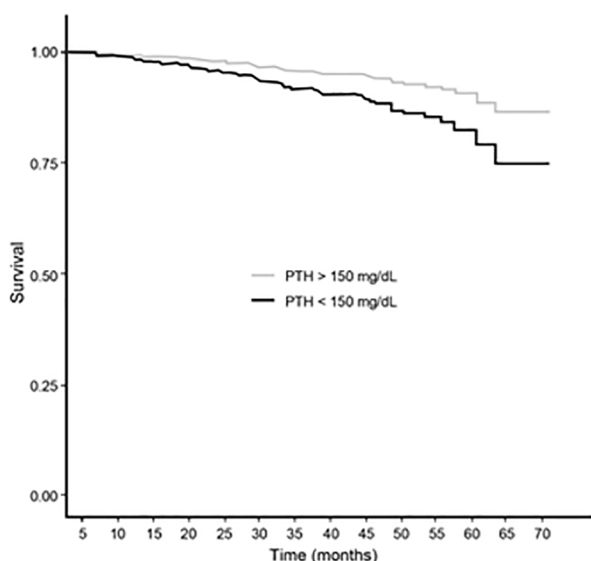


Figure 4. Cox regression survival curves for cardiovascular mortality of patients with parathormone below versus above 150 pg/mL (adjusted for: calcium, phosphorus, age, gender, race, diabetes, coronary artery disease, albumin and residual diuresis). Hazard ratio: 1.96 (1.33–2.90), p-value: < 0.01. Log-rank test.

300 pg/mL separated participants with low and high turnover, which was also observed in the study by Solal et al.^{31,32}.

Regarding PTH levels and mortality for KDIGO, studies such as the DOPPS that indicated values between 101 and 300 pg/mL, which had lower mortality and an expressive increase with PTH higher

than 600 pg/mL, were taken as references²³. The COSMOS study correlated the value of 398 pg/mL with the best survival, accepting a variation between 168 and 674 pg/mL⁵. Fouque et al. showed that PTH values between 100 and 1090 pg/mL showed better survival and finally, Floege et al. observed better survival at PTH levels between 75 and 600 pg/mL^{14,15}. Barreto et al. evaluated 97 biopsies of HD participants, with a one-year interval, showing that those who remained with PTH levels within the values proposed by KDOQI had a high incidence of low bone turnover³³. Based mainly on this study, KDIGO proposed other PTH values (between 2 and 9 times the value of the method - 150 to 600 pg/mL) as the ones that best discriminated bone turnover¹¹.

We have shown an association between cardiovascular mortality and lower PTH levels, and our findings are in line with that of the COSMOS study, as well as Avram et al. and Liu et al. studies, who found an association between higher all-cause mortality rate and lower PTH levels^{5,34}. Asci et al. found an association between CAC score and low bone turnover and age and DM in HD patients. In line with this study, we found an association between cardiovascular mortality and low levels of PTH and age and DM³⁵.

LIMITATIONS

This was a nationwide cohort with patients from different regions of Brazil, which differ in terms of social, economic, eating habits, and mixed-race factors and this may interfere with the results³⁶.

Importantly, few publications were careful in selecting participants treated with PD for more than 6 months as we did. This was done to assess the effect of PD on MBD, reducing the interference of conservative management for participants with CKD. However, we can not completely exclude selection bias.

Although residual renal function is important for prognosis in patients treated with PD, as well as characteristics of membrane transport, KtV, and the doses of calcium carbonate intake and sevelamer, these variables were not available for the majority of participants and were not included in our analyses.

MBD affects quality of life and could cause various comorbidities (fractures, bone pain, increased hospitalization, and cardiovascular complications)³⁷⁻⁴². Our study was limited to assessing the impact of these disorders on the survival of participants on PD. Other

TABLE 3 CARDIOVASCULAR DEATH AS A COMPETING RISK

Variable	Coefficient (SE)	Subdistribution hazard ratio	p-value
Calcium	0.60	0.55	0.33
Phosphorus	0.22	2.17	< 0.01
PTH	0.20	1.76	< 0.01
Age	0.09	1.04	< 0.01
Diabetes	0.20	1.68	0.01
Residual diuresis	0.20	0.76	0.18
Albumin	0.25	0.99	0.98
CAD	0.21	2.00	< 0.01

Competing risk analysis for cardiovascular mortality of patients with calcium values below versus above 10.2 mg/dL, phosphorus below versus above 5.5 mg/dL, and PTH below versus above 150 pg/mL (adjusted for: age, gender, diabetes, residual diuresis, albumin, and CAD). Log-rank test. PTH: Parathormone; CAD: coronary artery disease.

studies are needed to assess whether a better control of MBD affects morbidity and quality of life of PD participants.

CONCLUSION

This is the first study to demonstrate that P above and PTH below the values proposed by KDOQI and KDIGO increase cardiovascular mortality in PD patients.

ACKNOWLEDGEMENTS

We thank the Brazilian Baxter Healthcare Renal Team and Steering Committee for important contributions to the development of this project. We would also like to acknowledge the participating centers.

DISCLOSURES

RP-F received research grants, consulting fees, and speaker honorarium from Baxter Healthcare. TPM received consulting fee and speaker fee from Baxter Healthcare. The remaining author declares that the research was conducted in the absence of any commercial or financial relationships that could be construed as a potential conflict of interest.

AUTHORS' CONTRIBUTION

All authors contributed to conception and design of the study and to manuscript revision, reading, and approval of the submitted version. CT organized the database and performed the statistical analysis.

CONFLICT OF INTEREST

The authors declare that they have no conflict of interest related to the publication of this manuscript.

REFERENCES

- Selby NM, Kazmi I. Peritoneal dialysis has optimal intradialytic hemodynamics and preserves residual renal function: why isn't it better than hemodialysis?. *Semin Dial.* 2019 Jan;32(1):3-8.
- Collins AJ, Foley RN, Gilbertson DT, Chen SC. United States Renal Data System public health surveillance of chronic kidney disease and end-stage renal disease. *Kidney Int Suppl.* 2015 Jun;5(1):2-7.
- Coen G, Pierantozzi A, Spizzichino D, Sardella D, Mantella D, Manni M, et al. Risk factors of one year increment of coronary calcifications and survival in hemodialysis patients. *BMC Nephrol.* 2010 Jun;11:10.
- Kalantar-Zadeh K, Kuwae N, Regidor DL, Kovesdy CP, Kilpatrick RD, Shinaberger CS, et al. Survival predictability of time-varying indicators of bone disease in maintenance hemodialysis patients. *Kidney Int.* 2006 Aug;70(4):771-80.
- Fernández-Martín JL, Martínez-Cambor P, Dionisi MP, Floege J, Ketteler M, London G, et al. Improvement of mineral and bone metabolism markers is associated with better survival in haemodialysis patients: the COSMOS study. *Nephrol Dial Transplant.* 2015 Sep;30(9):1542-51.
- Tentori F, Blayney MJ, Albert JM, et al. Mortality risk for dialysis patients with different levels of serum calcium, phosphorus, and PTH: The Dialysis Outcomes and Practice Patterns Study (DOPPS). *Am J Kidney Dis.* 2008;52:519-530.
- Lopes AA, Tong L, Thumma J, et al. Phosphate binder use and mortality among hemodialysis patients in the Dialysis Outcomes and Practice Patterns Study (DOPPS): evaluation of possible confounding by nutritional status. *Am J Kidney Dis.* 2012;60:90-101.
- Anuja Mittalhenkle, Daniel L Gillen, Catherine O Stehman-Breen. Increased risk of mortality associated with hip fracture in the dialysis population *Am J Kidney Dis.* 2004 Oct;44(4):672-9.
- Noordzij M, Korevaar J C, Boeschoten E W, Dekker F W, Bos W J, Krediet R T, The Kidney Disease Outcomes Quality Initiative (K/DOQI) Guideline for Bone Metabolism and Disease in CKD: Association With Mortality in Dialysis Patients, Netherlands Cooperative Study on the Adequacy of Dialysis (NECO-SAD) Study Group *American Journal of Kidney Diseases, Vol 46, No 5 (November), 2005: pp 925-932*

10. National Kidney Foundation (NKF). K/DOQI clinical practice guidelines for bone metabolism and disease in chronic kidney disease. *Am J Kidney Dis.* 2003 Oct;42(4 Suppl 3):S1-S201.
11. Ketteler M, Block GA, Evenepoel P, Fukagawa M, Herzog CA, McCann L, et al. Diagnosis, evaluation, prevention, and treatment of chronic kidney disease-mineral and bone disorder: synopsis of the kidney disease: improving global outcomes 2017 clinical practice guideline update. *Ann Intern Med.* 2018 Mar;168(6):422-30.
12. Moraes TP, Figueiredo AE, Campos LG, Olandoski M, Barretti P, Pecoito-Filho R. Characterization of the BRAZPD II cohort and description of trends in peritoneal dialysis outcome across time periods. *Perit Dial Int.* 2014 Dec;34(7):714-23.
13. Fein PA, Asadi S, Singh P, Hartman W, Stuto S, Chattopadhyay J, et al. Relationship between alkaline phosphatase and all-cause mortality in peritoneal dialysis patients. *Adv Perit Dial.* 2013;29:61-3.
14. Fouque D, Roth H, Pelletier S, London GM, Hannedouche T, Jean G, et al. Control of mineral metabolism and bone disease in haemodialysis patients: which optimal targets?. *Nephrol Dial Transplant.* 2013 Feb;28(2):360-7.
15. Floege J, Kim J, Ireland E, Chazot C, Drueke T, Francisco A, et al. Serum iPTH, calcium and phosphate, and the risk of mortality in a European haemodialysis population. *Nephrol Dial Transplant.* 2011 Jun;26(6):1948-55.
16. Gallieni M, Caputo F, Filippini A, Gabella P, Giannattasio M, Stingone A, et al. Prevalence and progression of cardiovascular calcifications in peritoneal dialysis patients: a prospective study. *Bone.* 2012 Sep;51(3):332-7.
17. Shanahan CM, Crouthamel MH, Kapustin A, Giachelli CM. Arterial calcification in chronic kidney disease: key roles for calcium and phosphate. *Circ Res.* 2011 Sep;109(6):697-711.
18. Kapustin AN, Shanahan CM. Calcium regulation of vascular smooth muscle cell-derived matrix vesicles. *Trends Cardiovasc Med.* 2012 Jul;22(5):133-7.
19. Goodman WG, Goldin J, Kuizon BD, Yoon C, Gales B, Sider D, et al. Coronary-artery calcification in young adults with end-stage renal disease who are undergoing dialysis. *N Engl J Med.* 2000;342(20):1478-83.
20. Yamada S, Giachelli CM. Vascular calcification in CKD-MBD: Roles for phosphate, FGF23, and Klotho. *Bone.* 2017 Jul;100:87-93.
21. O'Neill WC. The fallacy of the calcium-phosphorus product. *Kidney Int.* 2007 Oct;72(7):792-6.
22. Ketteler M, Brandenburg V, Jahnhen-Dechent W, Westenfeld R, Floege J. Do not be misguided by guidelines: the calcium x phosphate product can be a Trojan horse. *Nephrol Dial Transplant.* 2005 Apr;20(4):673-7.
23. Tentori F, Blayney MJ, Albert JM, Gillespie BW, Kerr PG, Bommer J, et al. Mortality risk for dialysis patients with different levels of serum calcium, phosphorus, and PTH: the dialysis outcomes and practice patterns study (DOPPS). *Am J Kidney Dis.* 2008 Sep;52(3):519-30.
24. Kuhlmann MK. Phosphate elimination in modalities of hemodialysis and peritoneal dialysis. *Blood Purif.* 2010;29(2):137-44.
25. Block GA, Klassen PS, Lazarus JM, Ofsthun N, Lowrie EG, Chertow GM. Mineral metabolism, mortality, and morbidity in maintenance hemodialysis. *J Am Soc Nephrol.* 2004 Aug;15(8):2208-18.
26. Block GA, Hulbert-Shearon TE, Levin NW, Port FK. Association of serum phosphorus and calcium x phosphate product with mortality risk in chronic hemodialysis patients: a national study. *Am J Kidney Dis.* 1998 Apr;31(4):607-17.
27. Kimata N, Albert JM, Akiba T, Yamazaki S, Kawaguchi T, Kawaguchi Y, et al. Association of mineral metabolism factors with all-cause and cardiovascular mortality in hemodialysis patients: the Japan dialysis outcomes and practice patterns study. *Hemodial Int.* 2007 Jul;11(3):340-8.
28. Eddington H, Hoefield R, Sinha S, Chrysochou C, Lane B, Foley RN, et al. Serum phosphate and mortality in patients with chronic kidney disease. *Clin J Am Soc Nephrol.* 2010 Dec;5(12):2251-7.
29. Hagström E, Hellman P, Larsson TE, Ingelsson E, Berglund L, Sundström J, et al. Plasma parathyroid hormone and the risk of cardiovascular mortality in the community. *Circulation.* 2009 May;119:2765-71.
30. Saleh FN, Schirmer H, Sundsfjord J, Jorde R. Parathyroid hormone and left ventricular hypertrophy. *Eur Heart J.* 2003 Nov;24(22):2054-60.
31. Wang M, Hercz G, Sherrard DJ, Maloney NA, Segre GV, Pei Y. Relationship between intact 1-84 parathyroid hormone and bone histomorphometric parameters in dialysis patients without aluminum toxicity. *Am J Kidney Dis.* 1995 Nov;26(5):836-44.
32. Solal ME, Sebert JL, Boudailliez B, Marie A, Moriniere P, Gueiris J, et al. Comparison of intact, midregion, and carboxy terminal assays of parathyroid hormone for the diagnosis of bone disease in hemodialyzed patients. *J Clin Endocrinol Metab.* 1991 Sep;73(3):516-24.
33. Barreto FC, Barreto DV, Moysés RM, Neves KR, Canziani ME, Draibe SA, et al. K/DOQI-recommended intact PTH levels do not prevent low-turnover bone disease in hemodialysis patients. *Kidney Int.* 2008 Mar;73(6):771-7.
34. Liu CT, Lin YC, Kao CC, Chen HH, Hsu CC, Wu MS. Roles of serum calcium, phosphorus, PTH and ALP on mortality in peritoneal dialysis patients: a nationwide, population-based longitudinal study using TWRDS 2005-2012. *Sci Rep.* 2017 Feb;7:33.
35. Ascì G, Ok E, Savas R, Ozkahya M, Duman S, Toz H, et al. The link between bone and coronary calcifications in CKD-5 patients on haemodialysis. *Nephrol Dial Transplant.* 2011 Mar;26(3):1010-5.
36. Moraes TP, Olandoski M, Caramori JCT, Martin LC, Fernandes N, Divino-Filho JC, et al. Novel predictors of peritonitis-related outcomes in the BRAZPD cohort. *Perit Dial Int.* 2014;34:179-87.
37. Moe SM, Drüeke T. Improving global outcomes in mineral and bone disorders. *Clin J Am Soc Nephrol.* 2008;3(Suppl 3):S127-130.
38. Hansen D, Olesen JB, Gislason GH, Abrahamsen B, Hommel K. Risk of fracture in adults on renal replacement therapy: a Danish national cohort study. *Nephrol Dial Transplant.* 2016;31(10):1654-62.
39. Tentori F, McCullough K, Kilpatrick RD, Bradbury BD, Robinson BM, Kerr PG, et al. High rates of death and hospitalization follow bone fracture among hemodialysis patients. *Kidney Int.* 2014;85(1):166-73.
40. Fang Y, Ginsberg C, Sugatani T, Monier-Faugere MC, Malluche H, Hruska KA. Early chronic kidney disease-mineral bone disorder stimulates vascular calcification. *Kidney Int.* 2014;85(1):142-50.
41. Ryan L. Quantitative risk assessment for developmental toxicity. *Biometrics.* 1992 Mar;48(1):163-74.
42. Hruska KA, Saab G, Mathew S, Lund R. Renal osteodystrophy, phosphate homeostasis, and vascular calcification. *Semin Dial.* 2007 Jul;20(4):309-15.