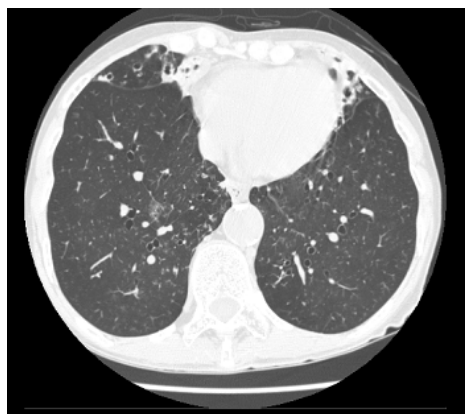


# Diagnóstico Radiológico

## We ask: What is the diagnosis?

- A 70-year-old female patient with a history of chronic cough and expectoration of whitish sputum for 9 months. Patient reports a 4-kg weight loss over the same period.



CIRO YOSHIDA JUNIOR  
UNIFESP-EPM, São Paulo, SP.

DANY JASINOWODOLINSKI  
Centro de Medicina Diagnóstica Fleury,  
São Paulo, SP



GUSTAVO DE SOUZA PORTES MEIRELLES  
UNIFESP-EPM, São Paulo, SP e Centro de  
Medicina Diagnóstica Fleury, São Paulo, SP.

NESTOR MÜLLER  
St. Paul's Hospital, Vancouver, BC, Canadá.

This section is intended to encourage a diagnostic approach based on clinical and radiographic findings. We invite all of our readers to participate. Submit your diagnosis by completing the form you will find on our website: [www.jornaldepneumologia.com.br](http://www.jornaldepneumologia.com.br); or by e-mail to: [jpneumo@terra.com.br](mailto:jpneumo@terra.com.br). Remember to include the full name of your institution. In the next issue of the journal, we will publish the diagnosis for this case, along with the names of those who submitted correct responses. The images shown above are those that were most relevant in making the final diagnosis.