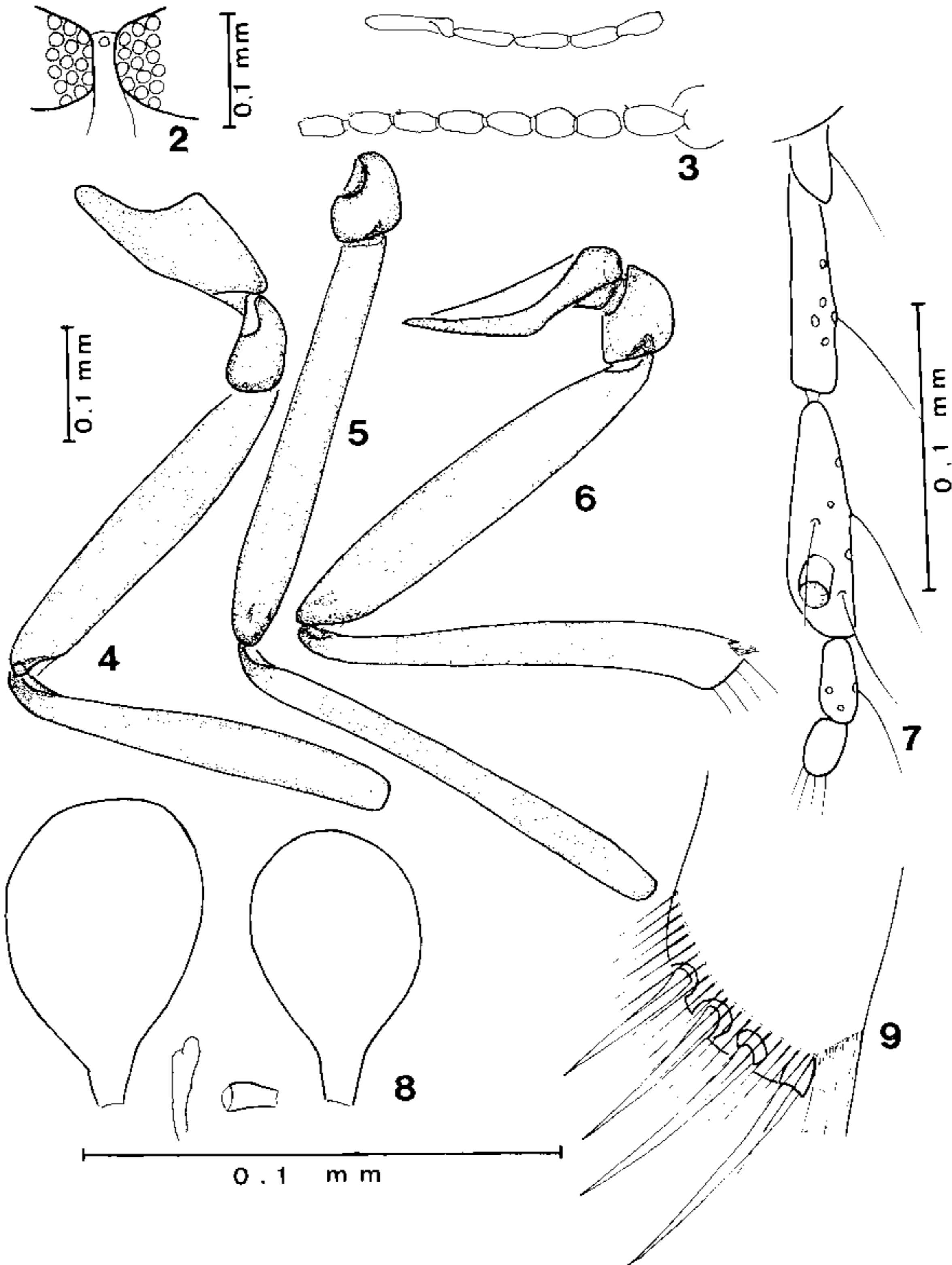


*Culicoides espinolai* is a typical member of the *debilipalpis* group, where it most closely resembles *C. insinuatus* Ortiz & Leon (1954, Bol. Inf. Cient. Nac. 7: 564 - 590) and *C. todatangae* Wirth & Blanton (1973, Amazoniana 4 (4): 405 - 470) by the presence of a pale spot in cell M2 lying adjacent to midportion of mediocubital stem. Both species differ from *espinolai* by the greater pilosity of eyes. *C. espinolai* differs from *insinuatus* by the larger size, the aspect of the femora, the reduced size of pale spots in the wing and the greater palpal ratio and proboscis. It differs from *todatangae* by broadly separated eyes and well separated poststigmatic pale spots in cell R5.



Fig. 1: Photograph of female wing of *Culicoides espinolai* n. sp.



Figs. 2-9: *Culicoides espinolai* n. sp. female; 2, eye separation; 3, antenna; 4, fore leg; 5, mid leg; 6, hind leg; 7, palpus; 8, spermathecae; 9, hind tibial comb.