

Malacoplax californiensis (Lockington, 1877) (Crustacea: Decapoda: Brachyura: Panopeidae) in the Gulf of California, Mexico

Michel E. Hendrickx¹  orcid.org/0000-0001-9187-6080

José Salgado-Barragán¹  orcid.org/0000-0002-3414-4008

¹ Laboratorio de Invertebrados Bentónicos, Unidad Académica Mazatlán, Instituto de Ciencias del Mar y Limnología, Universidad Nacional Autónoma de México. PO Box 811. Mazatlán, 82000 Sinaloa, Mexico

ZOOBANK: <http://zoobank.org/urn:lsid:zoobank.org:pub:988F7DAD-742D-461E-BDCF-85761B23F82D>

ABSTRACT

A series of specimens of *Malacoplax californiensis* (Lockington, 1877) is reported from the Gulf of California, significantly increasing the known localities for the otherwise rarely reported species from 3 to 12. Depth range is increased to 110–114 m on the continental shelf. Environmental conditions associated with the crabs were: 12.4–27.0°C; 1.9–5.0 ml/l O₂; 58–98% sandy sediments. Males and females were sexually distinct even at small sizes (4.2 mm and 3.5 mm CW, respectively). Two small specimens were infested with a rhizocephalan, a condition not reported previously for this species of panopeid.

KEYWORDS

Burrowing crab, western Mexico, distribution, tropical eastern Pacific, Rhizocephala

INTRODUCTION

About 450 species of true crabs (Brachyura) have been reported for the tropical eastern Pacific (Hendrickx, 1995a). Despite an intensive series of field work performed in both coastal and offshore habitats, there is still a lack of distribution data for many species which are known from only a few localities. Although many species of crabs are regularly caught by fishing vessels in the Gulf of California, Mexico (*e.g.*, *Hepatus* spp., *Osachila* spp., *Portunus* spp., some majids and parthenopids) (Hendrickx, 1995b; 1997; 1999), other species are rarely collected or have been little studied, including burrowing species that often escape the fishing gear.

CORRESPONDING AUTHOR

Michel E. Hendrickx
michel@ola.icmyl.unam.mx

SUBMITTED 31 January 2019
ACCEPTED 04 March 2019
PUBLISHED 06 June 2019

DOI 10.1590/2358-2936e2019008



All content of the journal, except where identified, is licensed under a Creative Commons attribution-type BY.

Nauplius, 27: e2019008

Malacoplax californiensis (Lockington, 1877), the California burrowing crab, is a small crab living in muddy substrates (Garth and Abbott, 1980, Wicksten, 2012). The only member of its genus, it has been scarcely reported within its distribution range, from California to Costa Rica. In the Gulf of California there are only three records for this species. A large scale survey of the invertebrates fauna associated with the continental shelf of the Gulf of California and occasional sampling in coastal ecosystems allow for the capture of a series of specimens that increase significantly our knowledge on its distribution and its ecology.

MATERIAL AND METHODS

Specimens were all collected in the Gulf of California, Mexico, by hand and with a small dredge in coastal ecosystems, or with sediment grabs and as part of the catch in trawl hauls during the CORTES 2 (March 1985) and CORTES 3 (August 1985) cruises aboard the R/V “El Puma” of the Universidad Nacional Autónoma de México (UNAM). Material examined is listed chronologically and was collected by the authors unless otherwise indicated. All the material was measured to the nearest 0.1 mm with

a Vernier and deposited in the Regional Collection of Marine Invertebrates (ICML-EMU followed by catalogue number). Environmental data were taken from Hendrickx and Salgado Barragán (1991) and Hendrickx (1999). Abbreviations are: St., sampling station; CW, carapace width; Id., identified by; Coll., collected by.

RESULTS AND DISCUSSION

Infraorder Brachyura Latreille, 1802

Superfamily Xanthoidea MacLeay, 1838

Family Panopeidae Ortmann, 1893

Malacoplax californiensis (Lockington, 1877)

(Figs. 1–3)

Eucrate ? californiensis Lockington, 1877: 33.

Eucrate californiensis.— Brandão *et al.*, 2012: 1.

Speocarcinus californiensis.— Holmes, 1900: 77.—

Rathbun, 1904: 190, pl. 9, fig. 1.— Rathbun, 1918:

42, textfig. 16, pl. 10, figs 2, 3.— Schmitt, 1921: 249,

textfig. 148, pl. 34, fig. 7.— Johnson and Snook,

1927: 398, fig. 346.— Glassell, 1934: 454.— Garth,

1960: 118.— Garth, 1961: 155.



Figure 1. *Malacoplax californiensis*. Dorsal and ventral view of male (left) and female (right). Scale bar, 10 mm.

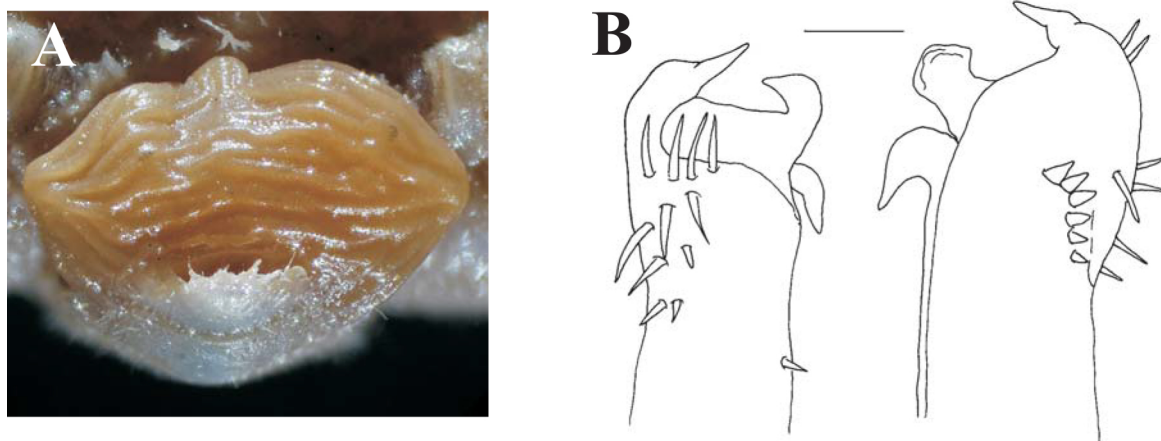


Figure 2. *Malacoplax californiensis*. A. Specimen (CW 6.3 mm) infested with parasitic Rhizocephala. B. Tip of first gonopod of male (CW 11.1 mm), frontal and caudal views. Scale bar, 0.1 mm.

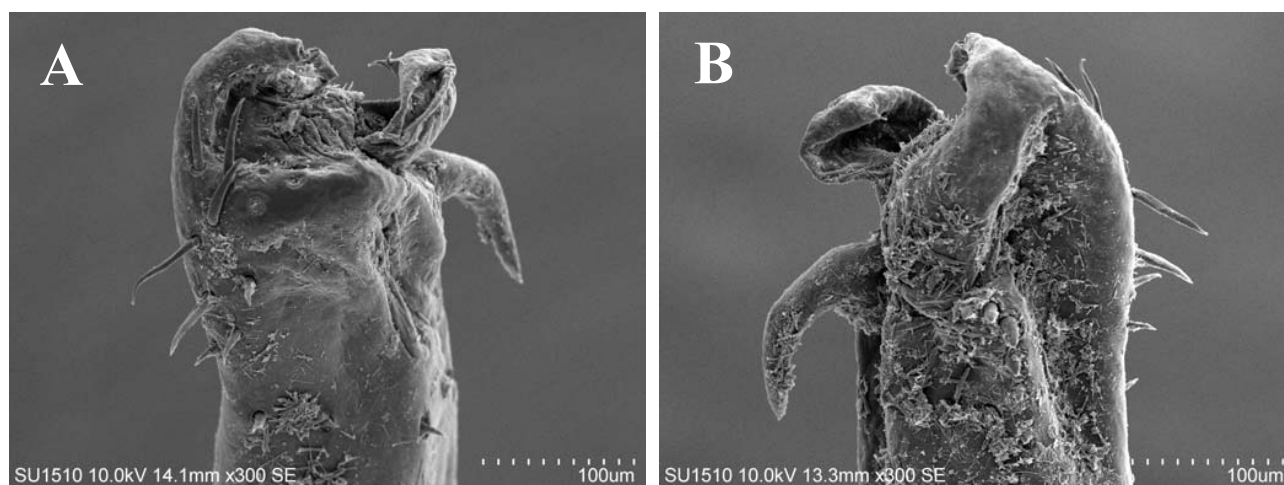


Figure 3. *Malacoplax californiensis* (male, CW 11.9 mm). SEM photographs. A. Tip of first gonopod, frontal. B. Same, caudal view.

Malacoplax californiensis.— Guinot, 1969a: 259, textfigs 7, 11, 15, 27, 260.— Guinot, 1969b: 707.— Guinot, 1970: 1079.— Garth and Abbott, 1980: 612, fig. 25.30.— Hendrickx *et al.*, 1983: 189.— Hendrickx, 1984: 34, pl. 2E, F.— Ricketts *et al.*, 1985: 357, fig. 274.— Martin and Abele, 1986: 186, fig. 4G.— Hubbard and Dugan, 1989: 55.— Hendrickx, 1993a: 314 (list 18).— Hendrickx, 1993b: 10.— Campos *et al.*, 1995: 177.— Hendrickx, 1995a: 139.— Jensen, 1995: 33, fig. 30.— Hendrickx, 1996: 615.— Hendrickx, 2005: 187.— McLaughlin *et al.*, 2005: 258, 319.— Arzola-González and Flores-Campaña, 2008: 43.— Ng *et al.*, 2008: 189.— Vargas-Castillo, 2008: 109 (Table 1), 110.— Felder and Thoma, 2010: 133, fig. 5, Appendix 1.— Campos and de Campos, 2012: 3.— Wicksten, 2012: 241, fig. 56A.— Jensen, 2014: 37, textfig.— Thoma *et al.*, 2014: 89 (Table 1), 93, 102, fig. 1.— Cortés, 2017: Appendix 1 (on line).

Material examined. Estero El Verde (23°25'30"N 106°33'00"W), December 11, 1979, 1 male (CW 11.9 mm), dredge (ICML-EMU-643) (Id. M.K. Wicksten) (see Hendrickx, 1984).

Estero de Urías (23°12'27"N 106°23'06"W), January 22, 1982, 1 female (CW 18.4 mm), beam trawl, 2–4 m (ICML-EMU-5463) (Coll. M. Hernández-Garza).

Agua Brava coastal lagoon (approximately 22°08'N 105°33'W), October 16, 1985, 2 males (CW 12.6–14.0 mm) and 1 female (CW 8.7 mm), intertidal, hand taken (ICML-EMU-3479).

CORTES 2, St. 25 (29°12'30"N 112°31'24"W), March 18, 1985, 1 male (CW 12.7 mm), 110–114 m, Otter trawl; St. 42 (30°11'54"N 112°47'W), March 17, 1985, 2 females (CW 4.5–4.9 mm), 32–34 m, Otter trawl (ICML-EMU-3478-A); St. 52 (25°40'06"N 109°28'48"W), March 20, 1985, 2 males (CW 4.6–

11.1 mm) and 2 females (CW 5.8 mm), Van Veen grab, 31m (ICML-EMU-3478-B), and 4 males (CW 5.2–14.7 mm), 4 females (CW 5.2–8.5 mm), 1 juvenile (CW 3.5 mm), and 1 specimen infested with Rhizocephala (CW 6.0 mm), Smith McIntyre grab (ICML-EMU-3478-C).

CORTES 3, St. 32 (29°46'24"N 114°19'18"W), August 3, 1985, 2 males (CW 7.6–12.1 mm), 3 females (CW 6.9–10.7 mm), 1 ovigerous female (CW 9.4 mm), and 1 specimen infested with Rhizocephala (CW 6.3 mm) (ICML-EMU-3477-A), 1 female (CW 6.8 mm) and 1 ovigerous female (CW 9.4 mm) (ICML-EMU-4002), 25–29 m, Van Veen grab; St. 42 (30°12'42"N 112°47'42"W), August 5, 1985, 8 males (CW 4.2–7.7 mm) and 8 females (CW 3.5–6.5 mm), 30 m, Otter trawl (ICML-EMU-3478-D); St. 49C (27°00'24"N, 111°59'12"W), August 7, 1985, 1 female (CW 10.1 mm), 23 m, Otter trawl (ICML-EMU-3477-B).

Santa Maria-La Reforma Bay (20°06'N, 108°08'W), March 30, 2005, 1 male (CW 21.7 mm) and 4 females (CW 4.8–16.3 mm), Yabby pump, muddy intertidal with stones and shell debris (ICML-EMU-12090).

Estero de Urías (23°10'N 106°20'W), March 14, 2008, 1 male (CW 5.8 mm) and 2 females (CW 8.0–10.4 mm), (ICML-EMU-9486) (Coll. L. Sauma).

Estero de Urías (23°12'N 106°23'W), December 4, 2017, 3 males (CW 9.3–12.7 mm) and 4 females (CW 10.0–15.5 mm), Yabby pump, muddy intertidal with some rubble (ICML-EMU-12091).

Previously reported localities. San Diego (type locality), and San Pedro, California, USA (Holmes, 1900). Venice and Alamitos Bay, California (Rathbun, 1918). Anaheim Creek, California (Schmitt, 1921). Mugu Lagoon, California, USA; San Luis Gonzaga Bay, Baja California and Punta Roca, Sonora, Mexico (Garth, 1960). Puerto Parker, Puerto Culebra and Golfo Dulce, Costa Rica (Garth, 1961). Angeles Bay, Baja California, Mexico (Guinot, 1969a). The locality "Ansheim Bay" given by Guinot (1969a) is Schmitt's (1921) Anaheim Creek (Orange County). Marina del Rey, Los Angeles, and "Estero" El Verde, Sinaloa, Mexico (Hendrickx, 1984; Arzola-González and Flores-Campaña, 2008). Conchalito, La Paz (approximately 24°10'N 110°25'W), Baja California Sur, Mexico (Campos *et al.*, 1995). Gulf of Papagayo

and Salinas Bay, La Cruz, Costa Rica (Vargas-Castillo, 2008; R. Vargas-Castillo pers. comm, 2018). Morro Bay, California, and Magdalena Bay, Baja California, Mexico (Wicksten, 2012). Punta Banda Estuary (approximately 31°48'N 116°48'W), near Ensenada, Baja California (Campos and de Campos, 2012). Gulf of California, Baja California Sur, Mexico (no further information) (Felder and Thoma, 2010; Thoma *et al.*, 2014).

New localities. A total of nine new localities are reported herein (Fig. 4), all in the Gulf of California, Mexico.

General distribution. Tropical eastern Pacific from Morro Bay, California, USA, to Golfo Dulce, Costa Rica.

Habitat and bathymetry. In holes on muddy beaches (California; Holmes, 1900). In depths of 11–27 m, sandy mud, crushed shell, mangrove leaves, mud and shell (Garth, 1961). Secondary channel, coastal lagoon, close to mangroves; 1 m depth, brackish water (22 ‰) (Hendrickx, 1984). In burrows in estuaries, muddy substrate (Campos *et al.*, 1995; Campos and de Campos, 2012). From intertidal to 33 m depth (Garth and Abbott, 1980; Wicksten, 2012). Material examined is from intertidal, in a muddy environment, to 110–114 m on the shelf. Environmental conditions associated with the crabs collected on the continental platform were: water temperature, 12.4–27.0°C; dissolved oxygen, 1.9–5.0 ml/l O₂; 58–98% sandy sediments, occasionally with significant portion of lime (Table 1). Jensen (2014) considered that *M. californiensis* is virtually extinct in the USA, at least in the intertidal.

Maximum size. Males, CL 16.0 mm, CW 22.6 mm (Rathbun, 1918). Examined material: males, CW 4.6–21.7 mm; females CW 3.3–16.3 mm; ovigerous females, CW 9.4 mm. Males from 4.6 mm CW and females from 3.5 mm CW show early development of sexual appendages. Two small specimens (CW 6.0 and 6.3 mm CW) were infested with Rhizocephala (Fig. 2A) and no information seems to be available on the presence of this parasite in *M. californiensis*.

Remarks. *Malacoplax californiensis* (Fig. 1) appears to be widely distributed in the Gulf of California and

Table 1. Environmental data obtained at bottom level in offshore sampling stations where *Malacoplax californiensis* was collected.

Cruise	Station	Depth (m)	Temp. (°C)	O ₂ (ml/l)	Sediments (%)			Sand
					Sand	Lime	Clay	
CORTES 2	25	110-114	12.4	1.90	96	-	-	Fine
CORTES 2	42	33	15.5	5.0	91	-	-	Fine
CORTES 2	52	31	15.5	5.0	58	35	06	-
CORTES 3	32	27	27.0	4.0	98	-	-	Fine
CORTES 3	42	30	26.0	3.50	80	16	05	-
CORTES 3	49C	23	22.5	3.50	93	-	-	Very fine

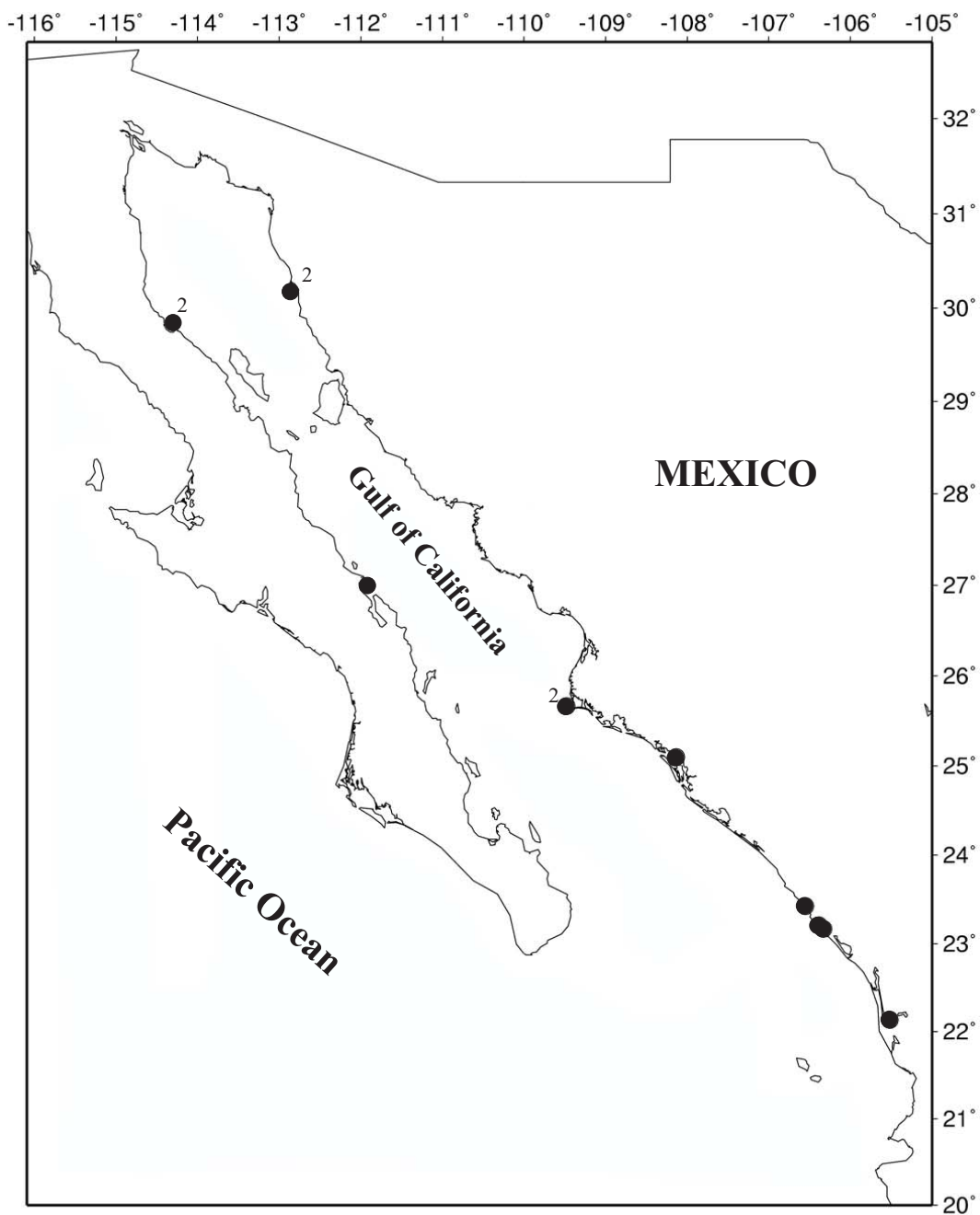


Figure 4. Localities in the Gulf of California where *Malacoplax californiensis* was found. Number 2 indicates that two samples were collected at very close localities.

occurs in both shallow and deep (> 100 m depth) environment. Consequently, it occurs in a wide range of water temperature considering that high water temperature are common in the intertidal environment in tropical-subtropical regions.

Guinot (1969a) considered the affinities of the monospecific genus *Malacoplax* to be close to the Panopeidae, particularly because of the shape and structure of the first gonopods (*i.e.*, distinctly trilobed). Although drawn at a slightly different angle, the illustrations provided by Guinot (1969a, fig. 27b) for the first gonopod of a male 14 mm CW closely resembles the typical, trilobed panopeid-like gonopod of two males (CW 11.1 and 11.9 mm) examined herein (Figs. 2B, 3). The series of long spines near the tip (some missing in the larger specimen examined) (Fig. 3) and the row of six subterminal, blunt spines (Figs. 2B, 3) were illustrated by Guinot (1969a: fig. 27) and partly reproduced by Martin and Abele (1986: fig. 4G).

Guinot (1978: 276) considered *Malacoplax* to be part of the Eucratopsinae. While reviewing the affinities of American mud crabs based on nuclear and mitochondrial markers, however, Thoma *et al.* (2014: 93) considered *M. californiensis* to be included in a moderately well-supported Panopeidae *s.s.* clade together with *Tetraplax quadridentata* (Rathbun, 1898), *Cyrtoplax spinidentata* (Benedict, 1892) and four species of *Eurytium* Stimpson, 1859, the later four species forming a better-supported clade by their own. According to Thoma *et al.* (2014: 96), the former three species are included in a well-supported monophyletic clade and appear to be united by structure of the thoracic sternum, although the same authors (Thoma *et al.*, 2014: 99) later considered this clade (*Malacoplax*, *Tetraplax*, *Cyrtoplax*) as “unsupported” without further comments. Although they emphasized that these three taxa share a similar general morphology and feature a greater exposure of penis between sternites 7 and 8 than in other taxa, they leave their affinity within the panopeids as an open question.

Environmental issues. California records of *M. californiensis*, a species originally described from San Diego, are scarce and mostly previous to 1960 (Holmes,

1900; Rathbun, 1918; Schmitt, 1921; Garth, 1960). According to Wicksten (2012), *M. californiensis* is uncommon and might represent an endangered species. Jensen (2014) considered it to be extinct in the area. Coastal habitats where this species has been recorded (*e.g.*, the muddy bottom in the San Diego and San Pedro areas) have been strongly modified due to population increase and constructions leading to habitat loss (Anonymous, 1992; UCAIC, 2009; M.K. Wicksten pers. comm., August 2018). Southern California has been particularly affected by habitat loss (80% of wetlands have been lost since 1990) (Suchanek, 1994; Anonymous, 2018). Human actions are significantly more impactful and persistent, and protecting (or restoring) entire coastal habitat is considered one of the best way to keep marine life healthy.

Although the type locality of *M. californiensis* is in southern California, it might represent one of these tropical-subtropical species that extends its distribution north of the Magdalena Bay area (on the west coast of the Baja California Peninsula), taking advantage of temporary coastal increases of water temperature to the north during El Niño events (see Garth, 1960), a process that might be strongly enhanced by global warming. Our study shows that there are more records of *M. californiensis* in the Gulf of California than previously thought, thus favoring the hypothesis of a tropical-subtropical origin for dispersion.

ACKNOWLEDGMENTS

Shiptime of the CORTES 2 and 3 cruises was provided by the Instituto de Ciencias del Mar y Limnología, UNAM, Mexico. Support for sampling and laboratory activities was provided by CONACyT-Mexico (ref.: ICECXNA-0211996). We thank R. Vargas-Castillo for providing details on material reported for Costa Rica in 2008, M.K. Wicksten for her review and information related to the case of *M. californiensis* in southern California, and one anonymous reviewer for comments on an earlier version of this manuscript. We thank Mercedes Cordero Ruiz for final edition of the manuscript and preparation of figures 2–4.

REFERENCES

- Anonymous.** 1992. The relationship between local short-term uses of man's environment and the maintenance and enhancement of long term productivity. Chapter 6.1. p. 1–3. In: Deep draft Navigation Improvements, Los Angeles and Long Beach Harbors, San Pedro Bay, California. Final Environmental Impact Statement/ Environmental Impact Report. U.S. Army Corps of Engineers and Los Angeles Harbor Department.
- Anonymous.** 2018. Habitat Loss. Cabrillo Marine Aquarium. Available at <https://www.cabrillomarineaquarium.org/conservation/habitat-loss.asp>. Accessed on August 2018.
- Arzola-González, J.F. and Flores-Campaña, L.M.** 2008. Alternativas para el aprovechamiento de los crustáceos decápodos del estero El Verde Camacho, Sinaloa, México. *Universidad y Ciencia*, 24: 41–48.
- Benedict, J.E.** 1892. Decapod Crustacea of Kingston Harbor. *John Hopkins University Circulars*, 11: 77.
- Brandão, M.B.; Coelho-Filho, P.A. and Tavares, M.D.S.** 2012. A review of the genus *Speocarcinus* Stimpson, 1859 (Crustacea, Brachyura, Xanthidae), with a key to its species and the description of one new species. *Zootaxa*, 3327: 1–19.
- Campos, E. and De Campos, A.R.** 2012. The intertidal brachyuran crabs from estuaries of the west coast Baja California, Mexico (Crustacea: Brachyura). *Marine Biodiversity Records*, 5 (e117): 1–7.
- Campos, E.; Félix-Pico, E.F. and García-Domínguez, F.** 1995. Distribution and host for four symbiotic crustaceans of the Mexican Pacific (Stomatopoda and Decapoda). *Bulletin of the southern California Academy of Sciences*, 94: 176–178.
- Cortés, J.** 2017. Marine biodiversity baseline for Área de Conservación Guanacaste, Costa Rica: published records. *ZooKeys*, 652: 129–179.
- Felder, D.L. and Thoma, B.P.** 2010. Description of *Etisus guinotae* n. sp., and discussion of its recent discovery in the Gulf of Mexico (Brachyura, Decapoda, Xanthidae). p. 117–138. In: P. Castro; P. Davie; P. Ng and B. Richer de Forges (eds), Studies on Brachyura: a Homage to Danièle Guinot. Crustaceana Monographs, 11.
- Garth, J.S.** 1960. Distribution and affinities of the brachyuran Crustacea. In: Symposium: The biogeography of Baja California and adjacent seas, Part II. Marine Biotas. *Systematic Zoology*, 9: 105–123.
- Garth, J.S.** 1961. Eastern Pacific Expeditions of the New York Zoological Society. XLV. Non-intertidal brachygnathous crabs from the west coast of tropical America. Part 2: Brachygnatha Brachyrhyncha. *Zoologica*, 46: 133–159.
- Garth, J.S. and Abbott, D.P.** 1980. Brachyura: The true crabs. p. 592–630. In: R.H. Morris; D.P. Abbott and E.C. Haderlie (eds), Intertidal Invertebrates of California. Stanford, Stanford University Press.
- Glassell, S.A.** 1934. Some corrections needed in recent carcinological literature. *Transactions of the San Diego Society of Natural History*, 7: 453–454.
- Guinot, D.** 1969a. Recherches préliminaires sur les groupements naturels chez les crustacés décapodes brachyours. VII. Les Goneplacidae. *Bulletin du Muséum national d'Histoire naturelle*, Paris, 2^e Sér., 41: 241–265.
- Guinot, D.** 1969b. Recherches préliminaires sur les groupements naturels chez les crustacés décapodes brachyours. VII. Les Goneplacidae (suite et fin). *Bulletin du Muséum national d'Histoire naturelle*, Paris, 2^e Sér., 41: 688–724.
- Guinot, D.** 1970. Recherches préliminaires sur les groupements naturels chez les crustacés décapodes brachyours. VIII. Synthèse et bibliographie. *Bulletin du Muséum national d'Histoire naturelle*, Paris, 2^e Sér., 42: 1063–1090.
- Guinot, D.** 1978. Principes d'une classification évolutive des crustacés décapodes brachyours. *Bulletin biologique de la France et de la Belgique*, 112: 211–292.
- Hendrickx, M.E.** 1984. Studies of the coastal marine fauna of southern Sinaloa, México. II. The decapod crustaceans of Estero El Verde. *Anales del Instituto de Ciencias del Mar y Limnología, UNAM*, 11: 23–48.
- Hendrickx, M.E.** 1993a. Crustáceos decápodos del Pacífico Mexicano. p. 271–318. In: S.I. Salazar-Vallejo and N.E. González (eds), Biodiversidad Marina y Costera de México. México, Comisión Nacional de Biodiversidad y CIQRO.
- Hendrickx, M.E.** 1993b. Crustáceos Decápodos Bentónicos del Sur de Sinaloa, México. *Anales del Instituto de Biología, Universidad Nacional Autónoma de México*, 64: 1–16.
- Hendrickx, M.E.** 1995a. Checklist of brachyuran crabs (Crustacea: Decapoda) from the Eastern Tropical Pacific. *Bulletin de l'Institut Royal des Sciences Naturelles de Belgique*, 65: 125–150.
- Hendrickx, M.E.** 1995b. Cangrejos. p. 565–636. In: W. Fischer; F. Krupp; W. Schneider; C. Sommer; K.E. Carpenter and V.H. Niem (eds), Guía FAO para la identificación de especies para los fines de la pesca. Pacífico centro-oriental. Vol. I. Plantas e Invertebrados. Roma, FAO.
- Hendrickx, M.E.** 1996. Habitats and biodiversity of decapod crustaceans in the SE Gulf of California, Mexico. *Revista de Biología Tropical*, 44: 603–617.
- Hendrickx, M.E.** 1997. Los cangrejos braquiuros (Crustacea: Brachyura: Dromiidae, hasta Leucosiidae) del Pacífico mexicano. México, Comisión Nacional para el Conocimiento y Uso de la Biodiversidad e Instituto de Ciencias del Mar y Limnología, UNAM, 178p.
- Hendrickx, M.E.** 1999. Los cangrejos braquiuros (Crustacea: Brachyura: Majoidea y Parthenopoidea) del Pacífico mexicano. Comisión Nacional para el Conocimiento y Uso de la Biodiversidad e Instituto de Ciencias del Mar y Limnología, UNAM, México, 274p.
- Hendrickx, M.E.** 2005. Cap. 14. Crustacea 6. Decapoda: Dendrobranchiata, Caridea, Palinura, Anomura and Brachyura. p. 159–194. In: M.E. Hendrickx, R.C. Brusca and L.T. Findley (eds), A Distributional Checklist of the Macrofauna of the Gulf of California, Mexico. Part I. Invertebrates. [Listado y Distribución de la Macrofauna del Golfo de California, México, Parte I. Invertebrados]. Tucson, Arizona-Sonora Desert Museum.
- Hendrickx, M.E. and Salgado Barragán, J.** 1991. Los estomatópodos (Crustacea: Hoplocarida) del Pacífico mexicano. *Publicación Especial Instituto de Ciencias del Mar y Limnología, UNAM*, 10: 1–200.
- Hendrickx, M.E.; Flores Verdugo, F.; van der Heiden, A.M. and Briseño Dueñas, R.** 1983. Fauna survey of the decapod crustaceans, reptiles and coastal birds of the Estero El Verde, Sinaloa, México, with some notes on their biology. *Anales*

- del Instituto de Ciencias del Mar y Limnología, UNAM, 10: 187–194.
- Holmes, S.J. 1900. Synopsis of the California stalk-eyed Crustacea. *Occasional papers of the California Academy of Sciences*, 7: 1–225.
- Hubbard, D.M. and Dugan, J.E. 1989. Northern occurrence of two estuarine crabs: the fiddler *Uca crenulata*, and the burrowing crab, *Malacoplax californiensis*. *California Fish and Game*, 75: 55–57.
- Jensen, G.C. 1995. Pacific Coast Crabs and Shrimps. Monterey, California, Sea Challengers, 87p.
- Jensen, G.C. 2014. Crabs and shrimps of the Pacific coast. A guide to shallow-water decapods from southeastern Alaska to the Mexican Border. Washington, USA, A Mola Marine Publication, 240p.
- Johnson, M.E. and Snook, H.J. 1927. Seashore Animals of the Pacific Coast. New York, Dover Publications, 659p.
- Latreille, P.A. 1802. Histoire naturelle, générale et particulière des Crustacés et des Insectes. Ouvrage faisant suite à l'histoire naturelle générale et particulière, composée par Leclerc de Buffon, et rédigée par C.S. Sonnini, membre de plusieurs Sociétés savantes. Vol. 3. Dufart, Paris, 476p.
- Lockington, W.N. 1877. Remarks on the Crustacea of the Pacific coast, with descriptions of some new species. *Proceedings of the California Academy of Sciences*, 30: 28–36.
- Martin, J.W. and Abele, L.G. 1986. Notes on male pleopod morphology in the brachyuran crab family Panopeidae Ortmann, 1893, sensu Guinot (1978) (Decapoda). *Crustaceana*, 50: 182–198.
- McLaughlin, P.A.; Camp, D.K.; Angel, M.V.; Bousfield, E.L.; Brunel, P.; Brusca, R.C.; Cadien, D.; Cohen, A.C.; Conlan, K.; Eldredge, L.G.; Felder, D.L.; Goy, J.W.; Haney, T.; Hann, B.; Heard, R.W.; Hendrycks, E.A.; Hobbs, H.H.; Holsinger, J.R.; Kensley, B.; Laubitz, D.R.; LeCroy, S.E.; Lemaitre, R.; Maddocks, R.F.; Martin, J.W.; Mikkelsen, P.; Nelson, E.; Newman, W.A.; Overstreet, R.M.; Poly, W.J.; Price, W.W.; Reid, J.W.; Robertson, A.; Rogers, A.D.; Ross, A.; Schotte, M.; Schram, F.R.; Shih, C.-T.; Watling, L.; Wilson, G.D.F. and Turgeon, D.D. 2005. Common and scientific names of aquatic invertebrates from the United States and Canada: crustaceans. *American Fisheries Society Special Publications*, 31: 1–535.
- MacLeay, W.S. 1838. On the brachyurous decapod Crustacea brought from the Cape by Dr. Smith. p. 53–71. In: A. Smith (ed), Illustrations of the Annulosa of South Africa; being a portion of the objects of natural history chiefly collected during an expedition into the interior of South Africa, under the direction of Dr. Andrew Smith, in the years 1834, 1835, and 1836; fitted out by 'The Cape of Good Hope Association for Exploring Central Africa'. London, Smith, Elder, and Co.
- Ng, P.K.L.; Guinot, D. and Davie, P.J.F. 2008. Systema Brachyurorum: Part I. An annotated checklist of extant brachyuran crabs of the world. *Raffles Bulletin of Zoology, Supplement*, 17: 1–286.
- Ortmann, A.E. 1893. Die Decapoden-Krebse des Strassburger Museums, mit besonderer Berücksichtigung der von Herrn Dr. Döderlein bei Japan und bei den Liu-Kiu-Inseln gesammelten und zur Zeit im Strassburger Museum aufbewahrten Formen. VII. Theil. Abtheilung: Brachyura (Brachyura genuina Boas) II. Unterabtheilung: Cancroidea, 2. Section: Cancrinea, 1. Gruppe: Cyclometopa. *Zoologische Jahrbücher. Abteilung für Systematik, Geographie und Biologie der Thiere*, 7: 411–495, plate 17.
- Rathbun, M.J. 1898. The Brachyura of the biological expedition to the Florida Keys and the Bahamas in 1893. *Bulletin from the Laboratories of Natural History, State University of Iowa*, 4: 250–294.
- Rathbun, M.J. 1904. Decapod crustaceans of the northwest coast of North America. *Harriman Alaska Expedition*, 10: 1–190.
- Rathbun, M.J. 1918. The grapsoid crabs of America. *Bulletin of the United States National Museum*, 97: 1–461.
- Ricketts, E.F.; Calvin, J.; Hedgpeth, J.W. and Phillips, D.W. 1985. Between Pacific Tides, 5th ed. Stanford, California, Stanford University Press, 652p.
- Schmitt, W.L. 1921. The Marine Decapod Crustacea of California with special reference to the decapod Crustacea collected by the United States Bureau of Fisheries steamer "Albatross" in connection with the biological survey of San Francisco Bay during the years 1912–1913. *University of California Publications in Zoology*, 23: 1–109.
- Stimpson, W. 1859. Notes on North American Crustacea, No. 1. *Annals of the Lyceum of Natural History of New York*, 7: 49–93.
- Suchanek, T.H. 1994. Temperate coastal marine communities: biodiversity and threats. *American Zoologist*, 34: 100–114.
- Thoma, B.P.; Guinot, D. and Felder, D.L. 2014. Evolutionary relationships among American mud crabs (Crustacea: Decapoda: Brachyura: Xanthoidea) inferred from nuclear and mitochondrial markers, with comments on adult morphology. *Zoological Journal of the Linnean Society*, 170: 86–109.
- UCAIC, 2009. Endangered Species and Habitat. University of California Agricultural Issues Center. Available at https://www.cdca.gov/agvission/docs/EndangeredSpecies_and_Habitat.pdf. Accessed on August 2018.
- Vargas-Castillo, R. 2008. Estomatópodos y decápodos (Crustacea) de la expedición RV Urracá-STRI (2005) en las costas del Pacífico central y norte de Costa Rica. *Revista de Biología Tropical*, 56: 105–112.
- Wicksten, M.K. 2012. Decapod Crustacea of the Californian and Oregonian zoogeographic provinces. *Zootaxa*, 3371: 1–307.