

ERRATA

Neotropical Entomology 34(6):917-925 (2006)

1. Please replace the Fig. 3, in volume 34, number 6, page 923, paper “Morphological and Molecular Characterization of Three Species of *Anastrepha* Schiner and of *Ceratitis capitata* (Wiedemann) (Diptera: Tephritidae) Maria C. Barbosa, Francisco J. Tovar and Suzete Bressan-Nascimento”, by the figure below.

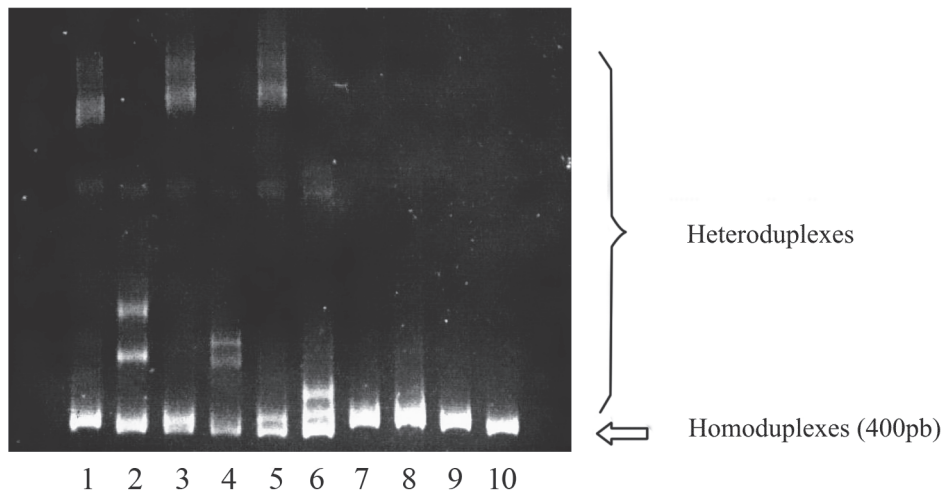


Figure 3. Heteroduplex mobility assay (HMA) patterns of D2 expansion segment region of the 28S rRNA gene. Lanes: 1 - *C. capitata* and *A. serpentina*; 2 - *A. sororcula* and *A. serpentina*; 3 - *A. sororcula* and *C. capitata*; 4 - *A. obliqua* and *A. serpentina*; 5 - *A. obliqua* and *C. capitata*; 6 - *A. obliqua* and *A. sororcula*; 7 - *A. serpentina*; 8 - *C. capitata*; 9 - *A. sororcula*; 10 - *A. obliqua*. (6% polyacrylamide gel stained with ethidium bromide).

2. 1. Please replace the Fig. 1 in volume 35 number 2 page 207 , paper “*Euglossa anodorhynchi* sp. n. (Hymenoptera: Apidae), a New Orchid Bee from Southern Brazil *André Nemésio*”, by the figure below.



Fig. 1. Upper left: overall view of the scutellum and metasoma; upper right: frontal view of the head; bottom left: velvet area and tufts of the mid tibia; bottom right: hind tibia (All pictures of the holotype *E. anodorhynchi* sp. n.).