

# Morphology and biological notes of *Macrosiagon octomaculata* (Gerstaecker) triungulinid and a summary of the knowledge on immature stages of the genus (Ripiphoridae)

Mônica Antunes Ulysséa<sup>1,2</sup> & Fabiano Fabian Albertoni<sup>1,3</sup>

<sup>1</sup> Universidade de São Paulo (USP), Museu de Zoologia (MZUSP). São Paulo, SP, Brasil.

<sup>2</sup> ORCID: <http://orcid.org/0000-0001-7296-4659>. E-mail: [monicaulyssaea@gmail.com](mailto:monicaulyssaea@gmail.com) (corresponding author)

<sup>3</sup> ORCID: <http://orcid.org/0000-0001-6588-2671>. E-mail: [fabianoalbertoni@gmail.com](mailto:fabianoalbertoni@gmail.com)

**Abstract.** Species of *Macrosiagon* Hentz are known to be wasp and bee parasitoids. Here, we present information on *Macrosiagon octomaculata* (Gerstaecker, 1855), including eggs and triungulinids, found on *Paepalanthus polyanthus* (Bong.) Sano (Eriocaulaceae) blooming in restinga habitat on Santa Catarina Island, South Brazil. This is the first record of an Eriocaulaceae species playing an important role in the *Macrosiagon* bionomics and the first accurate record of Ripiphoridae for southern Brazil, Santa Catarina state. In the study area, *P. polyanthus* attracted an inordinate number of insect species and one Thynnidae wasp was captured with a triungulinid on its wing. Eggs and triungulinids were also found on one plant of *P. polyanthus* and associated with *M. octomaculata*. We provide descriptions of the female reproductive organs as well as the morphology of the triungulinid of *M. octomaculata*. A detailed examination of the triungulinid revealed novelties that complement information from previous publications regarding the Ripiphoridae. We also compare triungulinids of *M. octomaculata* with those of other species, and provide a table summarizing comparative characters. Finally, we provide a table with current information on the recorded host species and immatures of *Macrosiagon*.

**Key-Words.** Wedge-shaped beetle; Tenebrionoidea; Ripiphorinae; Macrosiagonini; Primary larva; Thynnidae; Eriocaulaceae.

## INTRODUCTION

The Ripiphoridae Gemminger, 1870 is a small family of parasitoid beetles, divided into five subfamilies (Hemirhipidiinae, Pelecotominae, Ptilophorinae, Ripidiinae, and Ripiphorinae), 41 genera, and around 400 species worldwide (Linsley & MacSwain, 1951; López-Colón, 1997; Falin, 2003; Lawrence *et al.*, 2010; Falin & Engel, 2014; Barclay, 2015). Adults tend to be fast moving and short-lived as free-living individuals, but the larvae undergo a hypermetamorphic development as endo- and ectoparasites of insects. The larvae of the Pelecotominae and Hemirhipidiinae subfamilies are parasitoids of wood-boring beetles (*e.g.*, Ptinidae and Cerambycidae); Ripiphorinae develop in Hymenoptera nests (*e.g.*, Apidae, Crabronidae, Halictidae, Pompilidae, Scoliidae, Sphecidae, Tiphiidae and Vespidae) and the Ripidiini (Ripidiinae) are parasites of Blattodea. However, the life histories of the Ptilophorinae and Eorhipidiini (Ripidiinae) are completely unknown (Coll, 1942; Linsley & MacSwain, 1951; Selander, 1991a; López-Colón, 1997; Falin, 2002a; Pinto,

2003; Majka, *et al.*, 2006; Batelka, 2010; Batelka & Straka, 2011; Batelka *et al.*, 2016).

For *Macrosiagon octomaculata* (Gerstaecker, 1855) the immature stages are virtually unknown. The only available information with regards to their biology is that they were reared from the cocoons of *Campsomeris* sp. (Hymenoptera: Scoliidae) (Nowell, 1915) as well as cocoons of *Tiphia* sp. of several species together (Hymenoptera: Tiphiidae) (Davis, 1919). In this context, this study aims to aggregate information on *Macrosiagon octomaculata* at both, the species and genus levels, describing the egg, triungulinid and female reproductive organs as well as adding an accurate distributional record to southern Brazil. We also report a wasp species carrying a triungulinid, adult feeding habits, the first record of oviposition on Eriocaulaceae, and compare the first instar larvae with those of other species of Ripiphoridae.

**Distribution:** *Macrosiagon* is the most species rich and common genus of Ripiphoridae, with approximately 160 described species (Falin, 2002a, 2004; Batelka, 2010), widely distributed across all

Pap. Avulsos Zool., 2020; v.60.special-issue: e202060(s.i.).25

<http://doi.org/10.11606/1807-0205/2020.60.special-issue.25>

<http://www.revistas.usp.br/paz>

<http://www.scielo.br/paz>

Edited by: Sônia A. Casari / Gabriel Biffi

Received: 31/10/2019

Accepted: 06/02/2020

Published: 04/03/2020

ISSN On-Line: 1807-0205

ISSN Printed: 0031-1049

ISNI: 0000-0004-0384-1825



**Table 1.** A review of host records and immatures knowledge for *Macrosiagon* Hentz, 1830, species name alphabetically ordered.

<i>Macrosiagon</i> species	Host(s): Family – Species	Immature	Reference(s)
<i>M. bifasciata</i> (Marseul, 1877)	CRABRONIDAE – <i>Cerceris sobo</i> Yasumatsu & Okabe, 1936 VESPIDAE – <i>Ancistrocerus fukaianus</i> Schulthess, 1913 SPHECIDAE – <i>Chalybion japonicum</i> (Gribodo, 1883); <i>Sceliphron deforme</i> (Smith, 1856); <i>S. madraspatanum</i> (Fabricius, 1781); <i>S. madraspatanum tubifex</i> (Latreille, 1809)	Unknown	Iwata, 1939 and Kifune, 1956 ( <i>apud</i> Batelka & Hoehn, 2007)
<i>M. bimaculata</i> (Fabricius, 1787) = <i>M. tricuspadata</i> Lepechin, 1774	MEGACHILIDAE – <i>Megachile</i> VESPIDAE – <i>Odynerus</i> (uncertain data)	Observed but not described by Farines; triungulinids described by Chobaut	Chobaut, 1895, 1906; Farines, 1826
<i>M. cruenta</i> (Germar, 1824)	VESPIDAE – <i>Pachodynerus nasidens</i> (Latreille, 1817); <i>Ancistrocerus campestris</i> (Saussure, 1852) SPHECIDAE – <i>Sceliphron caementarium</i> (Drury, 1773) (see further discussion in Snelling 1963); <i>S. jamaicense</i> (Fabricius, 1775)	Unknown	Snelling, 1963; Genaro, 1996
<i>M. cucullata</i> (Macleay, 1887)	SCOLIIDAE – <i>Austroscolia soror</i> (Smith, 1855); <i>Radumeris tasmaniensis</i> (Saussure, 1854)	Triungulinids	Dodd, 1917; Jarvis, 1922; Elliott, 2011
<i>M. diversiceps</i> (Blackburn, 1899)	CRABRONIDAE – Eating eggs of <i>Pison marginatum</i> Smith, 1856; <i>P. spinolae</i> Schuckard, 1838	Unknown	Evans <i>et al.</i> , 1980; Callan, 1981
<i>M. excavata</i> (Champion, 1891)	SPHECIDAE – <i>Sceliphron assimile</i> (Dahlbom, 1843)	Unknown	Hunt, 1999
<i>M. ferruginea</i> (Fabricius, 1775) = <i>M. flabellata</i> (Fabricius, 1781)	VESPIDAE – <i>Euodynerus variegatus</i> (Fabricius, 1793) (= <i>Odynerus crenatus</i> Lepeletier, 1841); <i>E. disconotatus</i> (Lichtenstein, 1884); <i>Rhynchium oculatum</i> (Fabricius, 1781); <i>Symmorphus</i> <i>murarius</i> (Linnaeus, 1785) (= <i>Odynerus nidulator</i> Saussure, 1855); <i>Synagris calida</i> (Linnaeus, 1758); <i>S. siceliana</i> Saussure, 1863; <i>S. spiniventris</i> (Illiger, 1802)	Triungulinids and late instars described	Chobaut, 1891a, b, 1895; Roubaud, 1910; Bequaert, 1918; Grandi, 1936; Heitmans <i>et al.</i> , 1994
<i>M. flavipennis</i> (LeConte, 1866)	CRABRONIDAE – In cocoon of <i>Bembex spinolae</i> Lepeletier, 1845	Unknown	Barber, 1915; Vaurie, 1955
<i>M. gracilis</i> Manfrini de Brewer, 1966	HALICTIDAE – Reared from cells of <i>Megalopta ecuadoria</i> Friese, 1926 and <i>M. genalis</i> Meade- Waldo, 1916	Triungulinids were collected, but not described (Falín, 2004)	Falín <i>et al.</i> , 2001; Falín, 2004
<i>M. mutilata</i> (Gerstaecker, 1855)	APIDAE – Possibly <i>Exomalopsis similis</i> Cresson, 1865 [= <i>E. globosa</i> (Fabricius, 1793)]	Unknown	See discussion in Falín, 2004: p. 12
<i>M. nasuta</i> (Thunberg, 1784)	VESPIDAE – <i>Anterhynchium flavomarginatum</i> (Smith, 1852); <i>A. flavomarginatum micado</i> (Kirsch, 1873); <i>A. flavopunctatum flavopunctatum</i> (Smith, 1852); <i>Discoelius zonalis</i> (Panzer, 1801); <i>Epsilon manifestatum crassipunctatum</i> (Gusenleitner, 1991); <i>Eumenes fraterculus</i> Dalla- Torre, 1894; <i>E. micado</i> Cameron, 1904; <i>E. rubrofemoratus</i> Giordani Soika, 1941; <i>Euodynerus</i> <i>quadrifasciatus</i> (Fabricius, 1793); <i>E. niponicus niponicus</i> (Schulthess, 1908); <i>E. notatus</i> (Jurine, 1807); <i>Orancistrocerus drewseni</i> Saussure, 1857; <i>Oreumenes decoratus</i> Smith, 1852; <i>Pararhynchium ornatum</i> (Smith, 1852); <i>Rhynchium haemorrhoidale</i> (Fabricius, 1775)	Unknown	Iwata, 1939; Kifune, 1956; Matsumoto, 2002 ( <i>apud</i> Batelka & Hoehn, 2007); Yamane, 1990
<i>M. octomaculata</i> (Gerstaecker, 1855)	SCOLIIDAE – In cocoons of <i>Campsomeris</i> TIPHIIDAE – In cocoons of <i>Tiphia</i>	Egg and triungulinid described here	Nowell, 1915; Davis, 1919
<i>M. pectinata</i> (Fabricius, 1775)	TIPHIIDAE – <i>Tiphia inornata</i> Say, 1824	Unknown	Riley, 1874; Vaurie, 1955; Davis, 1919
<i>M. praeusta</i> (Gebler, 1829)	VESPIDAE – <i>Gymnomerus laevipes</i> (Shuckard, 1837) (= <i>Odynerus laevipes</i> )	Unknown	Chobaut, 1895
<i>M. cf. punctulaticeps</i> (Blackburn, 1899)	CRABRONIDAE – Found in cocoons of <i>Pison</i> SPHECIDAE – <i>Chalybion</i>	Unknown	Batelka & Hoehn, 2007
<i>M. punctulaticeps</i> (Blackburn, 1899)	THYNNIDAE – Found in cocoons of different species of Thynninae	Unknown	Smith, 1971
<i>M. pusilla</i> (Gerstaecker, 1855)	POMPILIDAE – In the cells nest of <i>Auplopus</i> TIPHIIDAE – In cocoons of <i>Tiphia pullivora</i> Allen & Jayres, 1930	Unknown	Clausen, 1940; Batelka & Hoehn, 2007
<i>M. sayi</i> (LeConte, 1858)	THYNNIDAE – In cocoons of <i>Myzinum</i> (= <i>Myzine</i> , = <i>Elis</i> )	Unknown	Rivnay, 1929; Vaurie, 1955
<i>M. semipunctata</i> (Lea, 1904)	SPHECIDAE – <i>Sceliphron formosum</i> (Smith, 1856)	Unknown	Callan, 1981
<i>M. vittata</i> (Erichson, 1847)	APIDAE – Pupae in the cells and adults in the nests of <i>Exomalopsis bruesi</i> Cockerell, 1914	Pupae were collected, but not described (Falín, 2004)	Rozen, 1997
<i>Macrosiagon</i> sp.	SPHECIDAE – <i>Sceliphron asiaticum</i> (Linnaeus, 1758) VESPIDAE – <i>Discoelius zonalis</i> (Panzer, 1801) (= <i>D. japonicus</i> Pérez, 1905); <i>Zeta argillaceum</i> (Linnaeus, 1758)	—	Yamane, 1990; Hunt, 1999; Matthews & González, 2004

continents, except Antarctica and New Zealand (Falín, 2002a; Batelka, 2004, 2007, 2011b; Lawrence *et al.*, 2010). In the Americas, their northern distributional limit is Ontario, Canada (Tomlin & Miller, 1989; Campbell, 1991) and their southern limit is Entre Ríos, Argentina (Vaurie, 1955; Manfrini de Brewer, 1966; Falín, 2002b, 2004).

**Host insects:** Species of this genus are known to parasitize a broad variety of solitary wasps – in the families Crabronidae, Pompilidae, Scoliidae, Sphecidae, Tiphiidae, and Vespidae (Clausen, 1976; Linsley & MacSwain, 1951; Falín, 2002a; Batelka & Hoehn, 2007; Lawrence *et al.*, 2010), and rarely bees – in the families Apidae and Halictidae (Clausen, 1976; Tomlin & Miller, 1989; Falín

*et al.*, 2001; Falín, 2002a; Lawrence *et al.*, 2010) (Table 1). A recent study suggested that different species or species complexes of *Macrosiagon* have host associations with different genera or subfamilies of bees or wasps (Batelka & Hoehn, 2007). However, the biology of most species remains poorly known (Falín, 2002a; Batelka & Hoehn, 2007). The hosts of only about 10% of species have been confirmed (Falín *et al.*, 2001), only a few have had parts of their life cycles described, and most immature stages remain unknown (Falín, 2002a).

**Visited and transfer plants:** Adults of *Macrosiagon* are reported as visitors of Amaranthaceae – genera *Aerva* Forssk. and *Sericocomopsis* Schinz (Batelka, 2011b);

Apiaceae – genera *Daucus* L. and *Eryngium* L. (Chobaut, 1895, 1906; Coll, 1942; Sánchez Rodríguez, 2001; Falin, 2002b; Cillo *et al.*, 2019); Asteraceae – genera *Asclepias* L., *Aster* L., *Baccharis* L., *Eriogonum* Michx., *Mikania* Wild, *Pluchea* Cass., *Senecio* L., and *Solidago* L. (Rivnay, 1929; Linsley & MacSwain, 1951; Falin, 2002a; Verdugo, 2010); Euphorbiaceae – genus *Croton* L. and *Euphorbia* L. (Batelka, 2011b); Lamiaceae – genera *Hyptis* Jacq., *Pycnanthemum* Michx., *Mentha* L. and *Monarda* L. (Chobaut, 1895; Rivnay, 1929; Gobbi, 2002 *apud* Batelka & Chaboo, 2015; Sánchez Rodríguez, 2001; Batelka & Hoehn, 2007; Batelka, 2011b); Resedaceae – *Ochradenus* Delile (Batelka, 2008c *apud* Batelka, 2011b); and Rubiaceae – *Mitracarpus* Zucc. and *Spermocoe* L. (Batelka, 2011b) (see Batelka, 2011b for discussion on accidental and often visits). The females are known to lay clusters of hundreds of eggs on flowers, the undersides of leaves and other parts of plant, as well as in crevices in the soil near the plant (Jarvis, 1922; Clausen, 1940). These places can be a source of triungulinid infestation of passing bees and/or wasps (Robertson, 1924; Linsley & MacSwain, 1951). When eggs and triungulinids are observed on plants, these are denominated as ‘transfer plants’ (*sensu* Batelka, 2011a). Triungulinids were collected on *Eryngium* L. (Apiaceae) (Chobaut, 1895, 1906; Farines, 1826).

On a single locality in Laos three adults of *Macrosiagon* species were collected, presumed on flowers of *Castanopsis* (L.) (Fagaceae). Usage of the same transfer plant by different *Macrosiagon* species, once this is confirmed, is maybe possible because each of the recorded ripiphorid species is known to parasitize a different group of hymenopterans (Batelka, 2013).

**Biology:** After hatching, individuals of *Macrosiagon* pass through at least two distinct larval stages (host-seeking or phoretic stage and feeding stage), which exhibit completely different biological and morphological traits (hypermetamorphosis). The host-seeking or phoretic stage is characterized by campodeiform first instar larva, known as a triungulinid, which is involved in the ectoparasite phase. The triungulinids attach themselves to adult hymenopteran hosts (Clausen, 1976) using their mandibles to grasp body hairs (Selander, 1991a; Tomlin & Miller, 1989), or to penetrate soft cuticles and wings (Linsley *et al.*, 1952). The host then transports them into its nest, where they change to the feeding stage. At this point, they enter the bodies of the host larvae and undergo enormous growth through the extension of their intersegmental membranes to assume their new form, named ‘repleta’ by Grandi (1936). Once the host larva approaches maturity, the pseudoeruciform *Macrosiagon* larvae emerge from their hosts and continue feeding externally (Grandi, 1936; Clausen, 1976; Selander, 1991a). It is not clear how many larval instars are involved in the whole cycle, nor if the triungulinid molts to the second instar within or externally to the host’s body. In the most detailed biological description of a *Macrosiagon* species, Grandi (1936) did not mention their ecdysis, and did not observe the entire life cycle. Nevertheless, it is believed that *Macrosiagon* species most likely have six larval in-

stars, like other Ripiphoridae, before molting to pupae. The larvae completely consume their hosts before pupating within the host’s nest (Selander, 1991a).

### ***Macrosiagon octomaculata* (Gerstaecker, 1855)**

**Diagnosis:** Adults of *Macrosiagon octomaculata* (Figs. 1-3) can be distinguished from other species of *Macrosiagon* by the elevated process at the apex of the pronotal disc (Batelka, 2011b); concolorous pronotum and elytra that are yellow or orange with black marks or black with yellow or orange marks (Rivnay, 1929; Linsley & MacSwain, 1951; Vaurie, 1955); two foremost metatarsomere rounded (Vaurie, 1955); and second metatarsomere thicker and shorter than, or subequal to, the third (Rivnay, 1929; Linsley & MacSwain, 1951).

**Distribution:** Widely distributed throughout the Americas with records from the USA (Alabama, Arizona, California, Florida, Georgia, Illinois, Kansas, Missouri, North Carolina, New Mexico, Texas, and Virginia) (Gerstaecker, 1855; LeConte, 1858; Horn, 1875; Rivnay, 1929; Linsley & MacSwain, 1951), Guatemala (Chamiquin, Chimaltenango, and San Jeronimo), Panama (Chiquiri), Colombia, Guyana (former British Guiana) (Vaurie, 1955), French Guiana (Batelka, 2011b), Brazil (states of Bahia and Pernambuco) (Gerstaecker, 1855), Peru (González & Juárez, 2016), Paraguay and Argentina (Batelka, 2011b).

## **MATERIAL AND METHODS**

### **Study site and associated plant**

Field work was conducted in Brazil, Santa Catarina state, Florianópolis city, Restinga da Joaquina (coastal sand dunes environment), between 27°36’S and 48°27’W, from 2007 to 2009. The Restinga da Joaquina comprises a large area of low-lying wetlands situated between two rows of fixed and semi-fixed sand dunes (Scherer & Castellani, 2004). The vegetation consists predominantly of herbs and shrubs, but a considerable area is devoid of plant life (Figs. 4-5).

The genus *Paepalanthus* sect. *Actinocephalus* (Körn.) Ruhland. (Poales: Eriocaulaceae: Paepalanthoideae) consists of 28 species restricted to the open areas of Brazil. *Paepalanthus polyanthus* is the most widespread and morphologically variable species in the genus (Sano, 2001) with a population at the study site that is characterized by short-lived monocarpic individuals (Castellani *et al.*, 2001) that have a unique fractal-like structure (Figs. 5-6). Most have a central axis from which several scapes arise, each ending in an umbel. Sometimes the axis itself also bears an umbel. Each umbel has around 290 pedicels that terminate in capitula, which in turn consist of about 20 flowers (Castellani & d’Eça-Neves, 2000), each of which is made-up of numerous stamens and carpels. At the study site, plants tended to grow in non-continuous groups in areas subject to regular flooding (Castellani *et al.*, 1996).

### Sampling and field observations

Adults of Ripiphoridae were collected on October 2007 (12<sup>th</sup>, 21<sup>st</sup>, 23<sup>rd</sup> and 28<sup>th</sup>) and November 2009. On November 10<sup>th</sup>, 2007, eggs and triungulinids were observed and partially collected, and on 14<sup>th</sup> one *Myzinum* sp. (Hymenoptera: Thynnidae: Myzininae) were collected bearing one triungulinid on its right hind wing. All specimens were collected on *Paepalanthus polyanthus*. Detailed information of the field expeditions and observations are presented in Table 2 in chronological order.

In addition to this, field observations were made on *M. octomaculata* behavior and on triungulinid behavior. The plant that possessed triungulinids was observed from a distance of two meters between 08:30 and 10:30 am on 19 November 2007. Notes of their behavior and any insects that visited the capitula were taken.

### Procedures with material

We made Scanning Electron Micrographs (SEM) of triungulinids at the Universidade Federal de Santa Catarina/UFSC in the Laboratório Central de Microscopia Eletrônica (Central Laboratory of Electronic Microscopy) with a JEOL JSM-6390LV microscope as well as at the Museu de Zoologia da Universidade de São Paulo (MZSP) in the Laboratório de Microscopia Eletrônica with a Carl Zeiss microscope LEO 440. Triungulinids were dehydrated at 50°C for 12 hours and coated in gold (four specimens) or carbon (one specimen). We dehydrated a second batch of three specimens to the point of 100% ethanol. Two of these were coated in gold and one in carbon.

We examined and photographed triungulinids under a Leica DM 5000B optical microscope after treating them first with lactic acid and conducted the same procedure after treating then with KOH and acetic acid. Each specimen was placed on a slide with Hoyer's solution and a coverslip placed over them. We took photographs and measurements using Leica Application Suite 4.1.0 and made drawings from a Camera Lucida attached to a Zeiss Axioscope at 40× magnification. All measurements (observed measurement, mean/ $\bar{x}$  and standard deviation/s.d.) are given in millimeters.

All adults were pinned, eggs and triungulinids fixed with 80% alcohol, a few eggs were retained to await hatching. Most of the material is housed at the Museu de Zoologia da Universidade de São Paulo/MZSP, one specimen is housed at Universidade Federal de Santa Catarina/UFSC. Morphological nomenclature for Coleoptera follows Grandi (1936), Tomlin & Miller (1989), Pohl & Beutel (2004), and Batelka *et al.* (2019a). Morphological nomenclature for *Paepalanthus polyanthus* follows Sano (2001).

### Identifications

Once collected, family and genera were defined by sight by authors. We identified all adult specimens of Ripiphoridae using the key provided by Linsley &

MacSwain (1951). These were confirmed by Zachary H. Falin, from the Natural History Museum of University of Kansas. Wasp identifications were made using the key presented by Fernández & Sharkey (2006) and confirmed by Lynn S. Kimsey from the University of California. Classification of *Paepalanthus polyanthus* within Eriocaulaceae was based on Andrade *et al.* (2010).

Considering the abundance of *Macrosiagon octomaculata* observed and collected on *P. polyanthus* and the absence of any other species in any of the samples, we assumed that all the triungulinids collected belonged to *M. octomaculata*.



Figures 1-3. *Macrosiagon octomaculata* (Gerstaecker, 1855) adult female habitus: two phenotypes. (1) dorso-lateral; (2) ventro-lateral; (3) dorsal.

**Table 2.** Field expeditions and their consequent results.

Field expeditions	Results
19 and 26.vii.2007	Around 10 hours on field for each expedition. Active searching, sweeping of vegetation and beating tray under few shrubs. No Ripiphoridae collected.
12.x.2007	One female <i>Macrosiagon octomaculata</i> collected by research fellows on <i>Paepalanthus polyanthus</i> .
19.x.2007	No <i>M. octomaculata</i> seen (1 hour searching).
21.x.2007	One female <i>M. octomaculata</i> collected on <i>P. polyanthus</i> .
23.x.2007	Five adults observed. Two females collected. Three resting on the base capitula scape or on bracts (Fig. 77), and 2 actively feeding on capitulum (5 hours searching).
24.x.2009	One adult female of <i>Scotaena</i> sp. (Thynnidae: Scotaeninae) and one adult male of <i>Scotaenini</i> indet. (Thynnidae) on <i>P. polyanthus</i> .
26.x.2009	One adult male of <i>Scotaenini</i> indet. on <i>P. polyanthus</i> .
28.x.2007	Two adults observed. One female dead collected on bract (4 hours searching).
10.xi.2007	More than 300 eggs were found on the base of capitula scape of one umbel (Figs. 73-74). A small amount of eggs (around 120) were collected with a plastic pot (2:30 hours searching).
14.xi.2007	Triungulinids observed very active among capitula of two umbels. One <i>Myzinum</i> sp. collected bearing one triungulinid on its right hind wing (Figs. 81-83) (3 hours searching). Active searching, sweeping of vegetation and beating tray under few shrubs. No adult Ripiphoridae collected. Around 10 hours on field.
20.xi.2007	Active searching, sweeping of vegetation and beating tray under few shrubs. No Ripiphoridae collected. Around 10 hours on field
19.xi.2007	Triungulinids observed very active among capitula, although, there were plainly fewer individuals than on 14.xi.2007 (3 hours searching). Two hours of observation in front of the plant, but no wasp visited any of the umbels. One <i>Myzinum</i> sp. collected on <i>P. polyanthus</i> .
11 field expeditions between 09.x-29.xi.2009	One female of <i>M. octomaculata</i> observed on <i>P. polyanthus</i> for few minutes (26.xi.2009) (Figs. 78-79).
04.xii.2008	More than 60 <i>P. polyanthus</i> plants were generally checked, but no <i>M. octomaculata</i> observed.



**Figures 4-6.** Collecting area at restinga and host plant *Paepalanthus polyanthus* (Bong.) Sano on Santa Catarina Island. (4) aerial view of the collection locality (photo: André Vieira da Rosa); (5) cluster of *P. polyanthus*; (6) one entire plant depicting its general morphological structures, central axis, umbels, scapes and capitula.

## RESULTS

### *Macrosiagon octomaculata* (Gerstaecker, 1855) (Figs. 1-3, 7-69, 73-83)

**Material examined:** *Macrosiagon octomaculata* (Coleoptera: Ripiphoridae): BRAZIL, Santa Catarina, Florianópolis, Restinga da Joaquina, on *Paepalanthus polyanthus*, 12.x.2007, E.L. Galitzk leg., one adult (MZSP 31312); 21.x.2007, M.A. Ulysséa leg., one adult (MZSP 31313); 23.x.2007, F.F. Albertoni & A.G. Martins leg., two adults (MZSP 31314, 31315); 28.x.2007, F.F. Albertoni & A.G. Martins leg., one adult (MZSP 31316); 10.xi.2007, F.F. Albertoni & C.E. de Siqueira leg., 75 eggs and 45 triungulinids (MZSP 10368); 26.xi.2009, A.G. Martins leg., one adult (UFSC). *Myzinum* sp. (Hymenoptera: Thynnidae: Myzininae): BRAZIL, Santa Catarina, Florianópolis, Restinga da Joaquina, on *Paepalanthus polyanthus*: one female adult with triungulinid on the right hind wing (MZSP 31366).

**Taxonomic issues:** Gerstaecker (1855) described *M. octomaculata* (written as *M. 8 maculatus*) and its three varieties: a, b and c. Later, Horn (1875) considered *Macrosiagon sayi* (LeConte, 1858) and *Macrosiagon puncticeps* (LeConte, 1858) as variants of *M. octomaculata* mostly based on similarities in color. Rivnay (1929) revalidated *M. sayi*, but retained *M. puncticeps* as a synonym of *M. octomaculata* and described a new variation of *M. octomaculata*, var. *maritima* Rivnay, 1929 (originally written *maritimum*), currently considered a synonym of *M. octomaculata* (Poole & Gentili, 1996). Linsley & MacSwain (1951) validated *M. octomaculata* and *M. sayi* as different species but argued that the last two and *M. pectinata* may be involved in a species complex. Batelka (2011b)

recognized nine species groups within *Macrosiagon*; *M. octomaculata* species group is formed only by *M. octomaculata* and *M. ukereweana* Schilder, 1923.

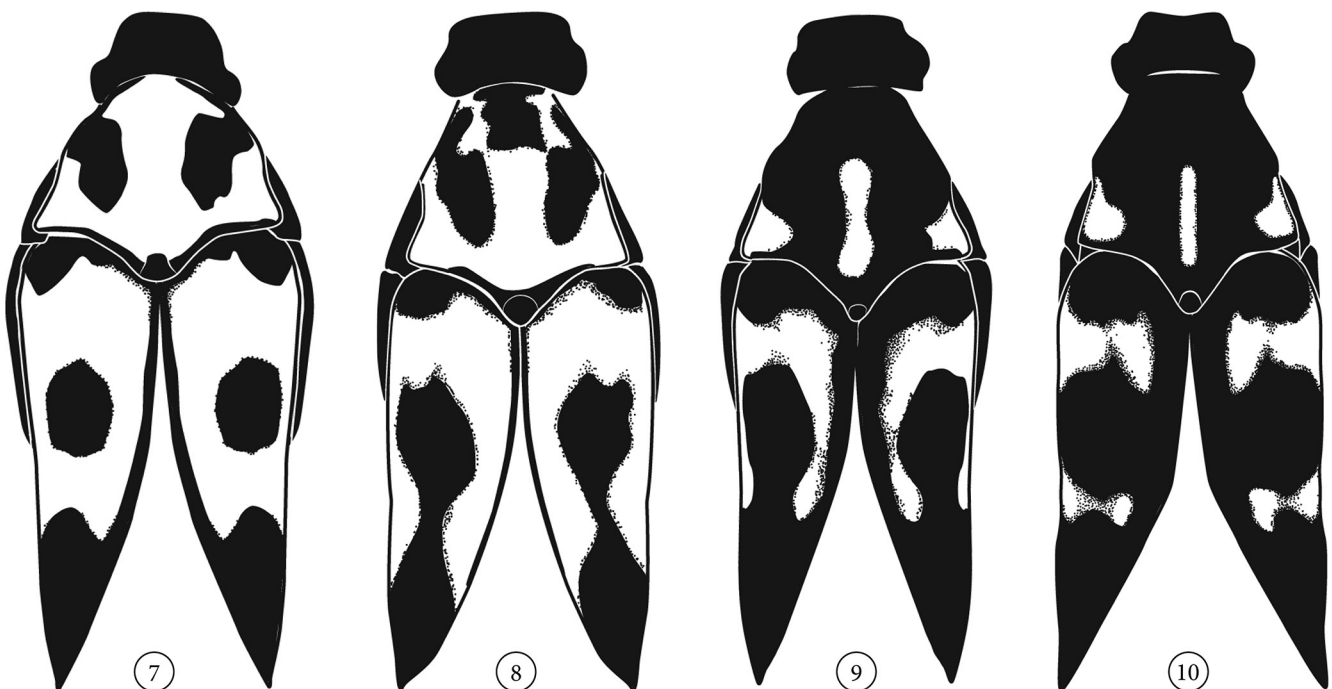
Due to this long and controversial discussion about the phenotypic differences between species and the possible existence of a species complex, we opted to present adult morphological characteristics and describe part of the female reproductive organs in order to characterize more accurately the specimens we studied to enable future comparisons.

### Female characterization and description of reproductive organs (Figs. 1-3, 7-17)

**Six specimens analyzed:** Body size varied considerably, from 6.4 to 9.1 mm (from head to apex of elytra).

**Color:** Head, sternites of thorax and legs black; antennae with the first two antennomeres and the proximal region of third yellowish, remaining antennomeres black; abdomen black (four individuals) or reddish (two individuals); scutellum black. General body color was not identical in any specimens, Figs. 7-10 illustrate four patterns of dorsal color of pronotum and elytra. Specimens varied from having most of the dorsal surface light brown in color, to most of it darkish to black (Figs. 7-10).

**Head:** frontal surface and lateral to eyes with no setae, but punctated, area below eyes (gena) and vertex covered with bright setae; one longitudinal smooth stripe from middle of head to vertex. Clypeus slightly invaginated and with a triangular depression medially. Labrum densely covered with bright setae. Mandibles covered with bright setae on proximal area of external sides.



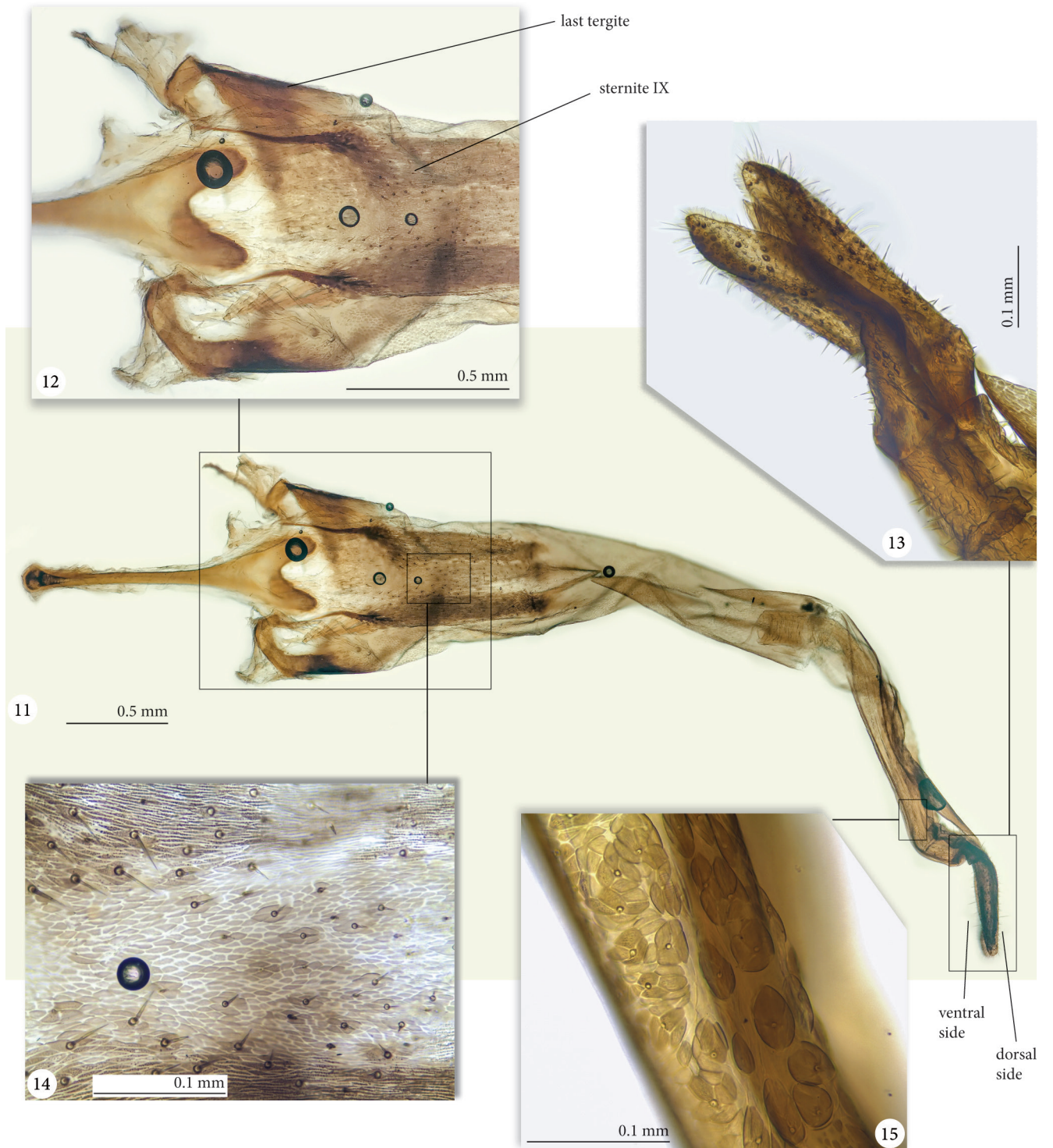
**Figures 7-10.** *Macrosiagon octomaculata* (Gerstaecker, 1855) female adult. Dorsal color patterns of pronotum and elytra of four specimens. Black areas are black colored in the specimens and white areas are light brown, as in Figures 1 and 3. From (7) to (10) shows lighter to darker specimens.

**Antennae:** 11 antennomeres, antennomere I the longest, antennomere II the shortest, antennomeres III-X pectinate, antennomere XI cuneiform but with rounded apex.

**Thorax:** Pronotum punctated and covered with bright setae, denser and longer setae anteriorly, short or absent posteriorly; medially with longitudinal and elevated process abruptly ending near posterior margin of pronotal disc; area after process always black; if pronotum

and elytra are in their natural and adjacent position, the scutellum is barely visible; thoracic sternites punctated and together with the legs covered by bright setae. Elytra punctated, if bearing setae, then strongly reduced; umbo smooth; one transverse depression on each *elytron*, directed from umbo to elytral suture.

**Abdomen:** Sternites VIII and IX, and tergite VIII, internal. Sternite VIII smooth, thin and long, slightly bulged prox-



**Figures 11-15.** *Macrosiagon octomaculata* (Gerstaecker, 1855) female reproductive organs. (11) sternite VIII and last tergite, with sternite IX and ovipositor everted outwards; (12) part of sternite VII, sternite IX with short setae, and last tergite; (13) distal part of ovipositor, dorsal; (14) internal surface of sternite IX; (15) surface near proximal part of ovipositor with sensilla associated with large compartment chambers.

imally (spiculum gastrale region) and medially invaginated distally (Figs. 11-12, 17); sternite IX bearing many short setae (Fig. 14), integument soft, mostly membranous, each side with a more sclerotized area from which originates a sclerotized, sharp filet, extending proximally (Figs. 11-12, 17). Tergite VIII relatively sclerotized laterally. Ovipositor bearing many short setae associated with glands (Fig. 15); distally the most sclerotized part (gonopore), bearing setae of different sizes and a fringe of setae on the apical border (Fig. 13).

### Egg description (Figs. 35, 73-74)

Eggs were collected with the embryo completely formed, as pharate triungulinids. Although the color observed, dark brown to black, was mostly the embryo colorsome of them were more yellowish; elliptical, about three times as long as wide; ultrastructure (SEM images) of egg surface smooth.

### Description of the free-living first instar larva – triungulinid (Figs. 18-69, 73-76, 81-83)

**Body:** All measurements are given in millimeters. Length 0.518-0.55 ( $\bar{x}$  = 0.537, s.d. = 0.01), width 0.172-0.183 ( $\bar{x}$  = 0.178, s.d. = 0.003); dark brown to black; heavily sclerotized, elongate, elliptical, widest across metathorax, abdomen narrowed apically; tegument transversally, finely and irregularly striated, except for mouthparts, antennae, tibiae, tarsi, and abdominal appendage; with one pair of very long setae on ninth abdominal segment and one pair of median setae on the eighth segment.

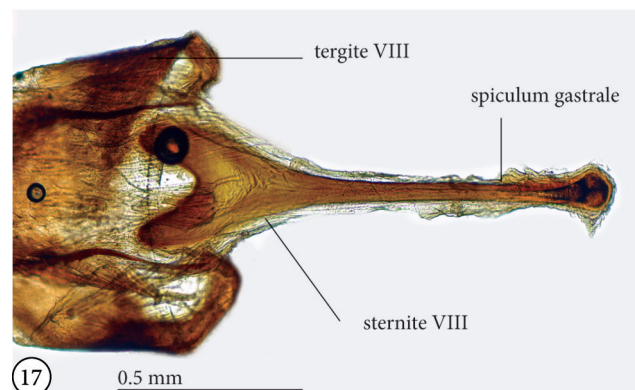
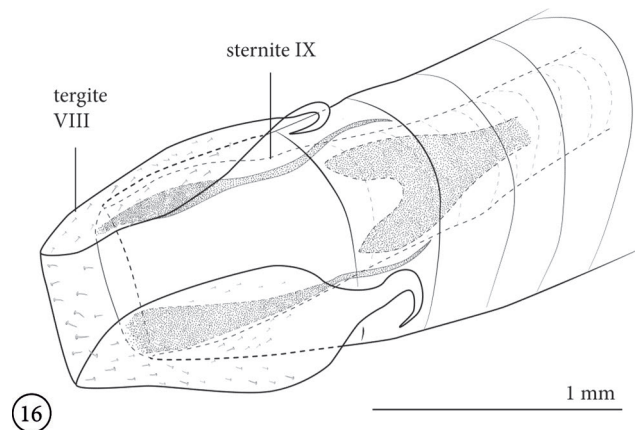
**Head (Figs. 18-20, 22, 32-34, 36-39, 49-55):** head width 0.132-0.149 ( $\bar{x}$  = 0.138, s.d. = 0.005), head length 0.108-0.123 ( $\bar{x}$  = 0.116, s.d. = 0.004); prognathous, subtriangular, wider than long, rounded anteriorly, with median longitudinal dorsal line extending to first third of head. Epicranial and frontal sutures absent, but a deep longitudinal median line from labrum to just after 1<sup>st</sup> third of the head. Clypeus and frons fused. Five stemmata unequal in size, positioned latero posteriorly on each side of the head, behind antennal foramina, in a highly pigmented area; three stemmata positioned latero-dorsally, and two latero-ventrally. Most microsetae represented as dots on Figs. 18-21, under optical microscope resembling pores in magnification lower than 1000 $\times$ .

**Head chaetotaxy:** dorsal surface with three pairs of setae (*st 1-3*) – one pair anteriorly near labrum, one laterally and one longer latero-posteriorly behind stemmata; and numerous microsetae – two/three anteriorly, in each side of median longitudinal line, four medially forming an arc-line, two central-posteriorly, and two pairs near the stemmata. Labrum bearing one pair of short setae and, within a slight concavity, one pair of longer setae, each one between two sensilla (red semi-circle on Figs. 52, 54). Stipes anteriorly bearing a long seta contiguous to one

microseta. Palpifer with one microseta at middle. Mala with one microseta, one medium seta contiguous to one microseta and a pair of peg-like setae distally. First maxillary palpomere with one pore distally, 3<sup>rd</sup> palpomere with one pore near base. Some specimens lack one or two dorsal microsetae (such as in Fig. 34, black arrow).

**Antennae (Figs. 18-20, 22, 32-34, 36, 38, 40-47, 49-50):** length 0.128-0.147 ( $\bar{x}$  = 0.137, s.d. = 0.00002, n = 13); located laterally and subposteriorly on head, anteriorly to stemmata, slender, with three antennomeres, as long as head length or longer; antennomere I short, length 0.006-0.008 ( $\bar{x}$  = 0.007, s.d. = 0.0007), wider than long; antennomere II longer than wide, length = 0.050-0.056 ( $\bar{x}$  = 0.053, s.d. = 0.001, n = 15), dorsal margin continuous and slightly curved with a circular sensorial pit near base, ventral margin double narrowed from second third to apex, the enlarged first third bearing a sensorium (*S*) and one spiniform projection (*spin. pro.*) laterally; antennomere III whip-like, length 0.072-0.083 ( $\bar{x}$  = 0.076, s.d. = 0.00002, n = 13) ca. 1.5 $\times$  as long as second. Antennal foramina opened ventrally (Fig. 44) and partially enfolding antennomere I.

**Mouthparts (Figs. 19-20, 33, 49-55):** postgenae delimited by well-defined subgenal suture and hypostomal suture. Labrum divided by a thin longitudinal suture, invaginated medially (Figs. 18, 20, 36, 38-39, 50-54). Mandibles

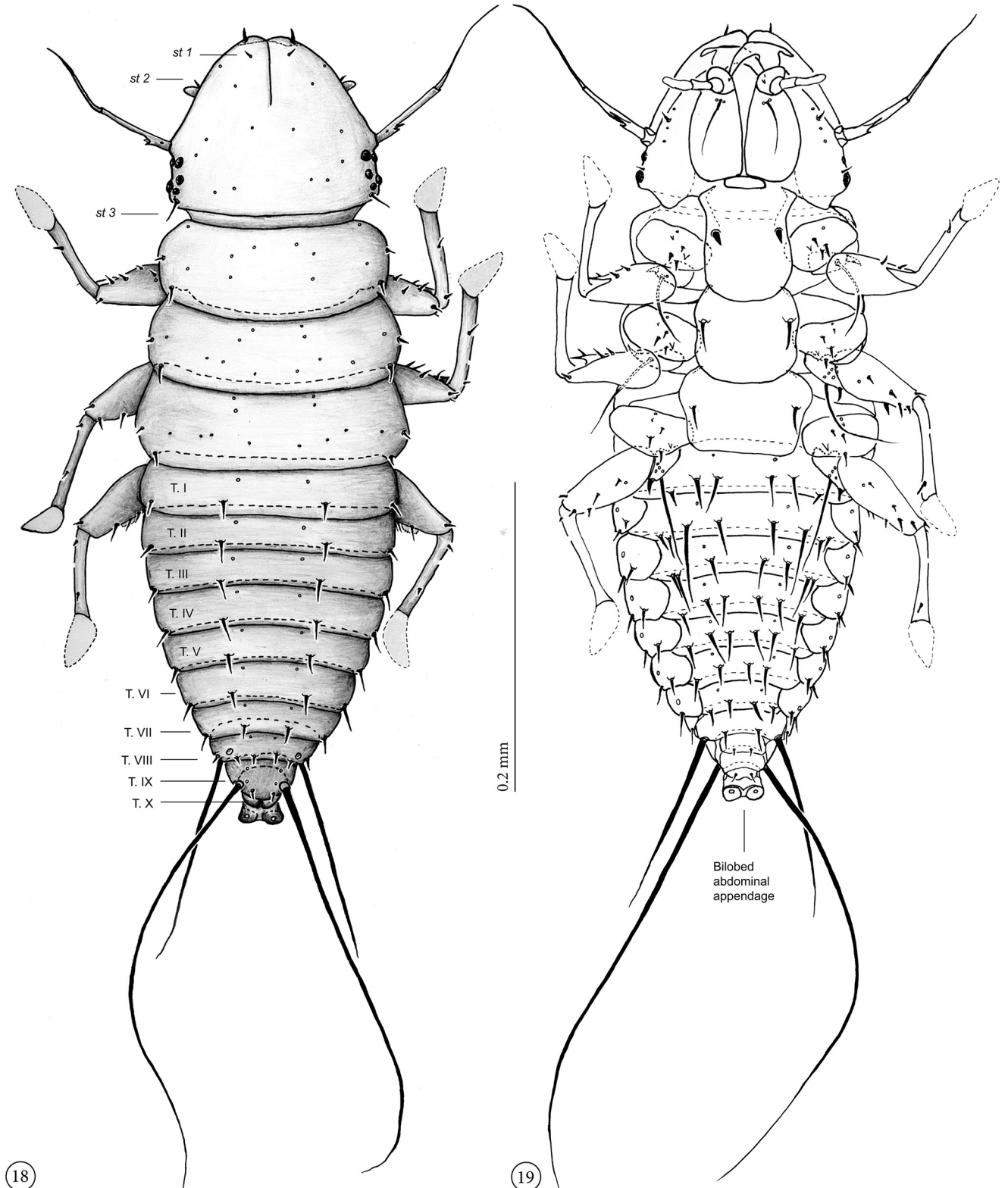


**Figures 16-17.** *Macrosiagon octomaculata* (Gerstaecker, 1855) female terminal abdominal segments. (16) position at resting of tergite and sternite VIII and IX, ventral; (17) part of last tergite and sternite VIII, dorsal.



falciform, covered by head, strongly overlapping each other when closed, inner margin without teeth or tooth-like ridges, one pore-like sensillum near condyle on external margin and one on ventral surface (Fig. 52, red arrows), ventral surface irregular; condyle well developed; dorsal surface not examined. Maxillae weakly sclerotized and widened posteriorly; cardo and stipes not fused; car-

do narrow and rectangular; stipes longer than wider and dilated basally. Maxillary palpi 3-articulated; first wider than long; second longer than wide, almost twice the length of the first palpomere; third palpomere slightly longer than second, with one lateral digitiform sensillum concealed in a groove on each side (Fig. 54, red arrow). Labium with postmentum almost twice as long as wide,



Figures 18-19. *Macrosiagon octomaculata* (Gerstaecker, 1855) triungulinid habitus and chaetotaxy. (18) dorsal; (19) ventral. T. I to T. IX – Tergites I to IX.

surface smooth, prementum not observed, apparently reduced to a small membranous region.

**Thorax (Figs. 18-19, 22-23, 27-29, 32-34, 50, 56-57):** length 0.158-0.169 ( $\bar{x}$  = 0.163, s.d. = 0.003); prothorax length 0.058-0.064 ( $\bar{x}$  = 0.062, s.d. = 0.003); metathorax width 0.172-0.183 ( $\bar{x}$  = 0.178, s.d. = 0.003). About 0.3× as long as body and 1.4× as long as head; thoracic segments about equal size, but prothorax slightly longer, metathorax the widest. Spiracles on the pleura of each thoracic segment. Prosternum, mesoventrite and metaventrite consisting of well-developed plates (in Figs. 27-29, 57, *pros-plt*, *mes-plt*, *met-plt*), prosternal plate the narrowest and longest, metasternal plate the widest.

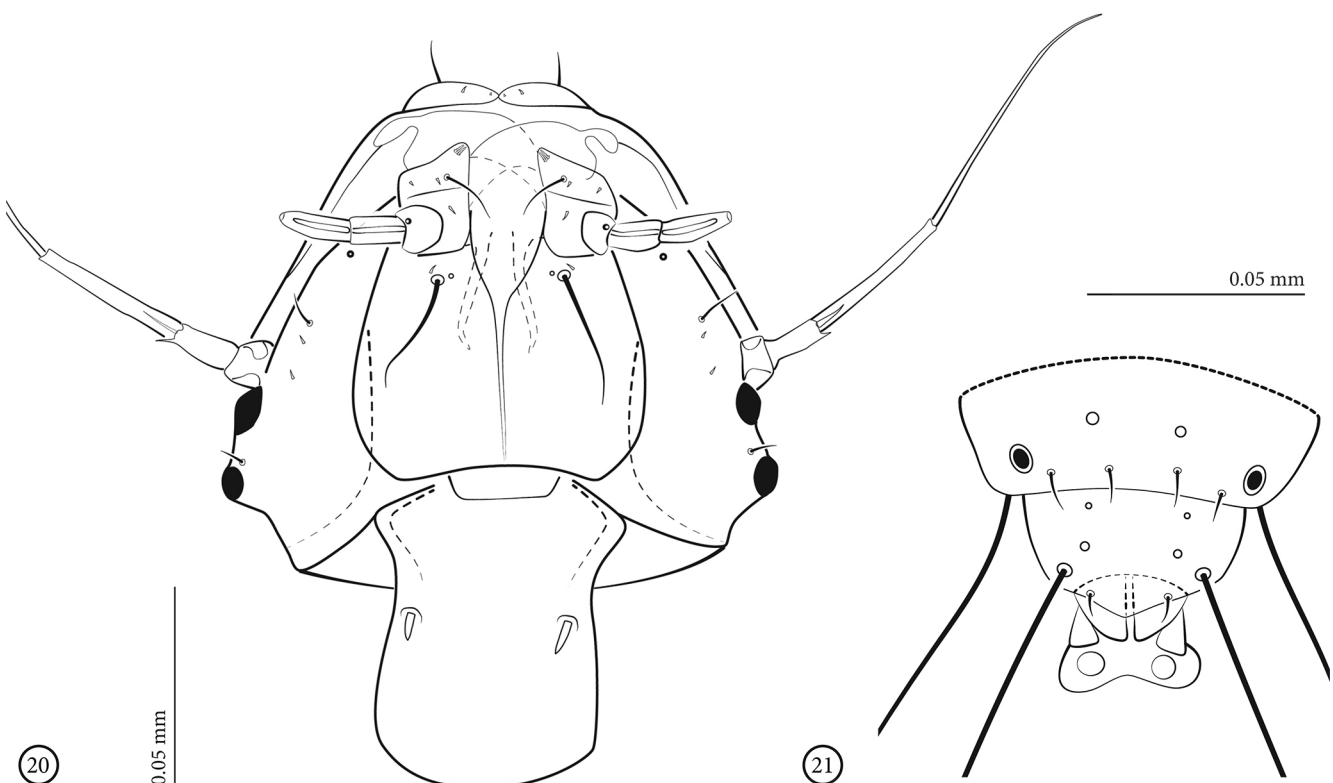
**Thoracic chaetotaxy (Figs. 18-19, 22-23, 27-30, 32-33):** dorsal surface with numerous microsetae and two pairs of setae near lateral margins of each segment, one pair at middle and one posteriorly. Prosternum bearing one pair of short and stout setae near each lateral margin (Fig. 57, red arrow); meso- and metaventrite laterally each bearing one long seta on each side. Coxal surface with six setae and two pores. Trochanter with four pores, three on a row and one apical, one apical spur and one long seta, slightly longer than femora. Femur bearing several sparse setae. Tibia with three setae on anterior margin, one seta on posterior margin, and one pore on outer face.

**Legs (Figs. 18-19, 22, 24, 26, 30-33, 56-65, 67):** left segments measured. Foreleg  $\bar{x}$  = 0.186, n = 13; median leg  $\bar{x}$  = 0.19, n = 15; hind leg  $\bar{x}$  = 0.20, n = 14. Frontal trochanter  $\bar{x}$  = 0.089, median trochanter  $\bar{x}$  = 0.097, hind

trochanter  $\bar{x}$  = 0.102. Frontal femur  $\bar{x}$  = 0.062, median femur  $\bar{x}$  = 0.064, hind femur  $\bar{x}$  = 0.070. All legs subequal in length. Coxa wider than long; hind coxa widely separated, distance between them subequal to twice the coxal width (Fig. 61). Trochanter subtriangular. Femora slightly shorter than tibio-tarsi, increasing in length from fore to hind leg. Median and hind femura with a denticulate keel distally on inner face (Figs. 58-59, red arrow). Tibia with a longitudinal depression on external face (Fig. 58, red arrow). Pretarsus membranous, pad-like, without claws.

**Abdomen (Figs. 18-19, 22, 24-25, 32-33, 66-69):** length 0.235-0.261,  $\bar{x}$  = 0.246, s.d. = 0.008. Elongate, gradually attenuated from base to apex, segments I to IX wider than long, X subquadrate, slightly wider than long, bearing a bilobate appendage. Lateral spiracles on segments I-VII, the largest located dorsally on segment VIII.

**Abdominal chaetotaxy (Figs. 18-19, 21-22, 24-25, 32-33, 57, 66-69):** tergites I-VII bearing one pair of microsetae anteriorly positioned, one pair of postero-medium setae and one pair of postero-lateral setae; tergites III-VII besides anterior setae, with one pair of postero-medium setae on the ventralized face of tergites; tergite VIII with two pairs of postero-medium setae and one pair of postero-lateral setae, all setae shorter than those on tergites I-VII; tergite IX about ¼ as wide as tergite I, with one pair of microsetae anteriorly positioned, one pair of posterior short setae and one pair of long setae (maximum length 0.371) located postero-laterally, about 0.7× as long as body. Sternites I, IV-VI with four pairs of setae: one pair of microsetae anteriorly, two pairs of medial setae cen-



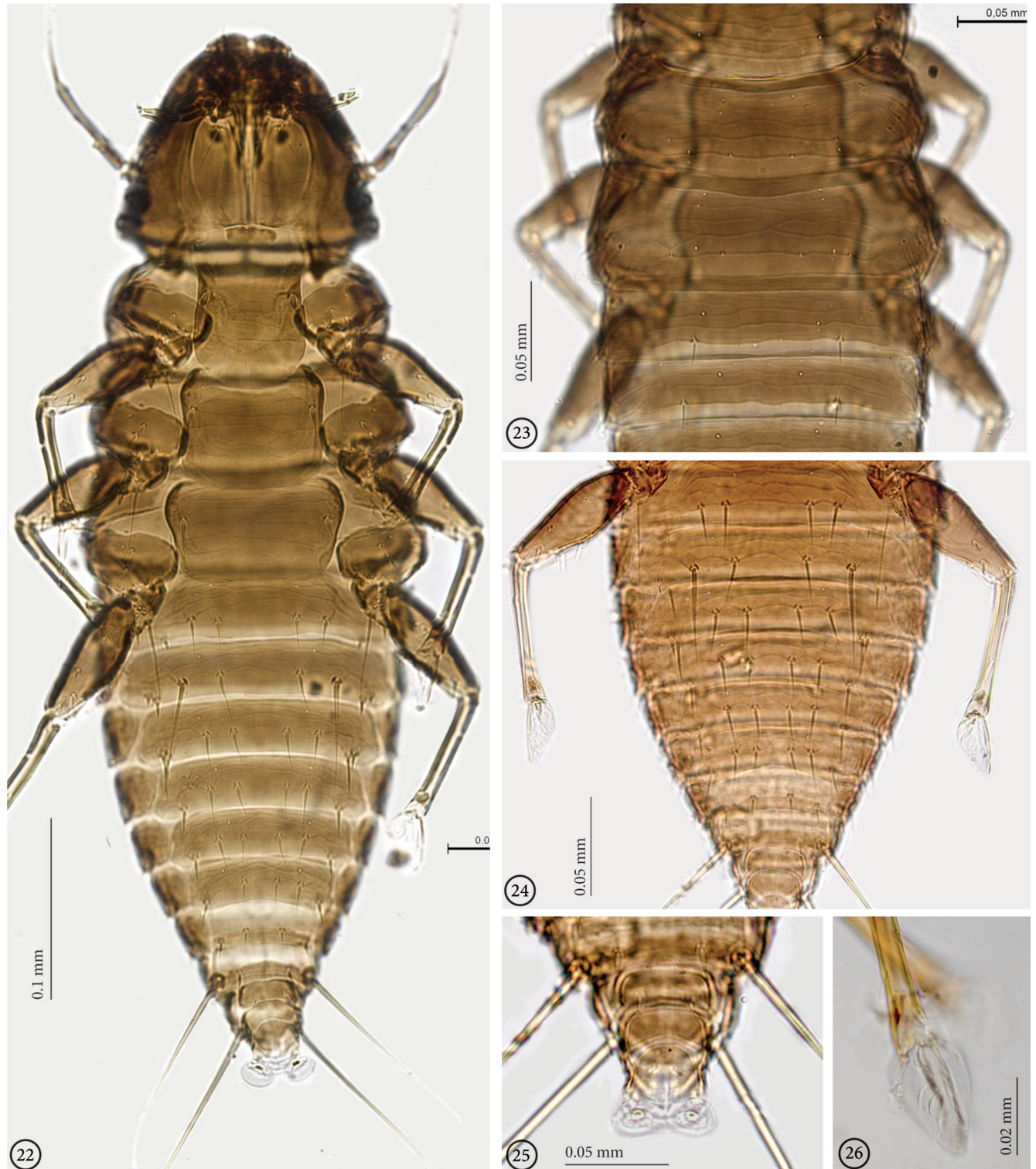
**Figures 20-21.** *Macrosiagon octomaculata* (Gerstaecker, 1855) triungulinid. (20) head, ventral; (21) last abdominal tergites and abdominal appendage.

tral-posteriorly and one pair of lateral setae posteriorly; sternites II-III same configuration, but with two (against one) pairs of lateral setae posteriorly; sternite VII the same as I, but with one (against two) pair of medial setae central-posteriorly; VIII with one pair of microsetae anteriorly positioned, one pair of medial setae and one pair of long lateral setae; IX with one pair of medial and one pair of lateral setae; X with one pair of lateral setae. In some spec-

imens, one or two ventral setae absent, especially on segments I, III and VI (setal socket or alveolus missing).

### Biological notes

*Macrosiagon octomaculata* collected in Restinga da Joaquina, Santa Catarina state, represents the first accu-



**Figures 22-26.** *Macrosiagon octomaculata* (Gerstaecker, 1855) triungulinid. Optical microscope photograph. (22-26) triungulinid treated with acetic acid: (22) ventral habitus; (23) thorax and part of abdomen, dorsal; (24) abdomen and posterior legs, ventral; (25) apex of abdomen with abdominal appendage, ventral; (26) pad-like pretarsus, dorsal.

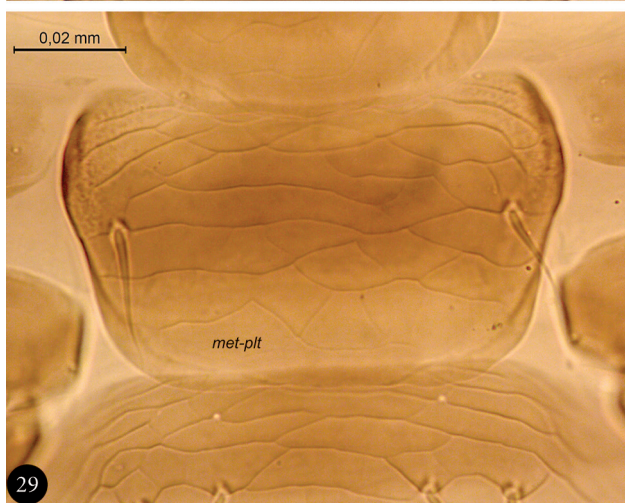
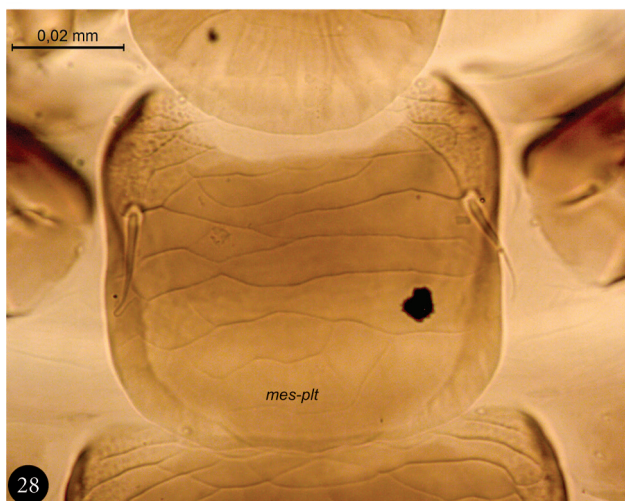
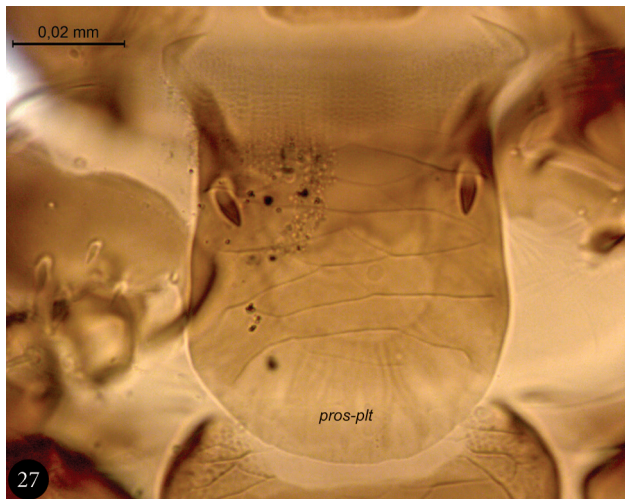
rate record for southern Brazil. Collecting information is summarized on Table 2.

Five adults of Ripiphoridae were collected on October 2007 (12<sup>th</sup>, 21<sup>st</sup>, 23<sup>rd</sup> and 28<sup>th</sup>) and November 2009. In November 2007 we located a cluster of eggs and recently hatched triungulinids on a *Paepalanthus polyanthus* umbel, from which we collected 75 eggs and 45 triungulin-

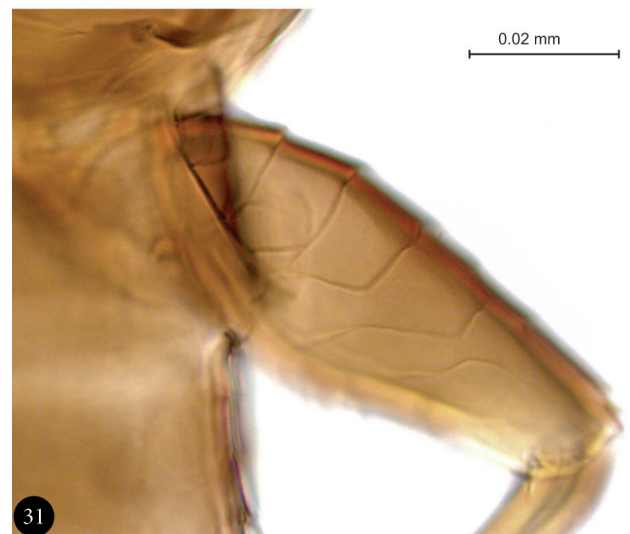
ids. Most the triungulinids later hatched in the laboratory. Eggs were laid between the bases of the pedicels of a single umbel (Figs. 73-74, eggs with pharate larva) and, when they were found, the capitula did not contain any active triungulinids. However, on hatching, the triungulinids were very active and occupied the capitula of the two neighboring umbels four days after being discovered (Figs. 75-76). This is the first record of Ripiphoridae oviposition on a species of Eriocaulaceae.

Ripiphoridae beetles are known to be short-lived as adults (Batelka, 2013). This was corroborated in this study as adults were only found during a short period within the duration of field work. Nine specimens were found resting on *P. polyanthus* (Fig. 77) and one was found dead on a bract, whilst the reared individuals lived for only two days.

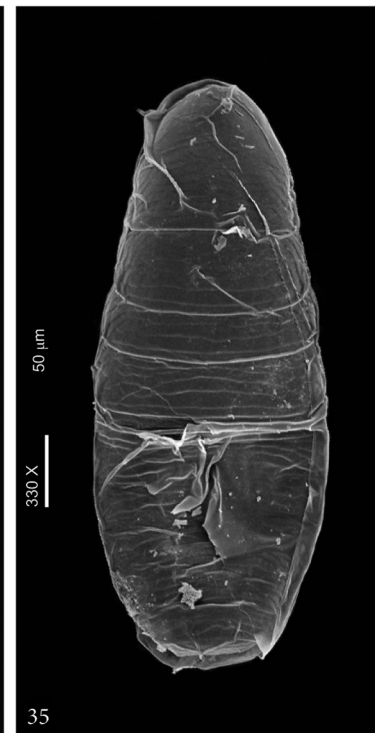
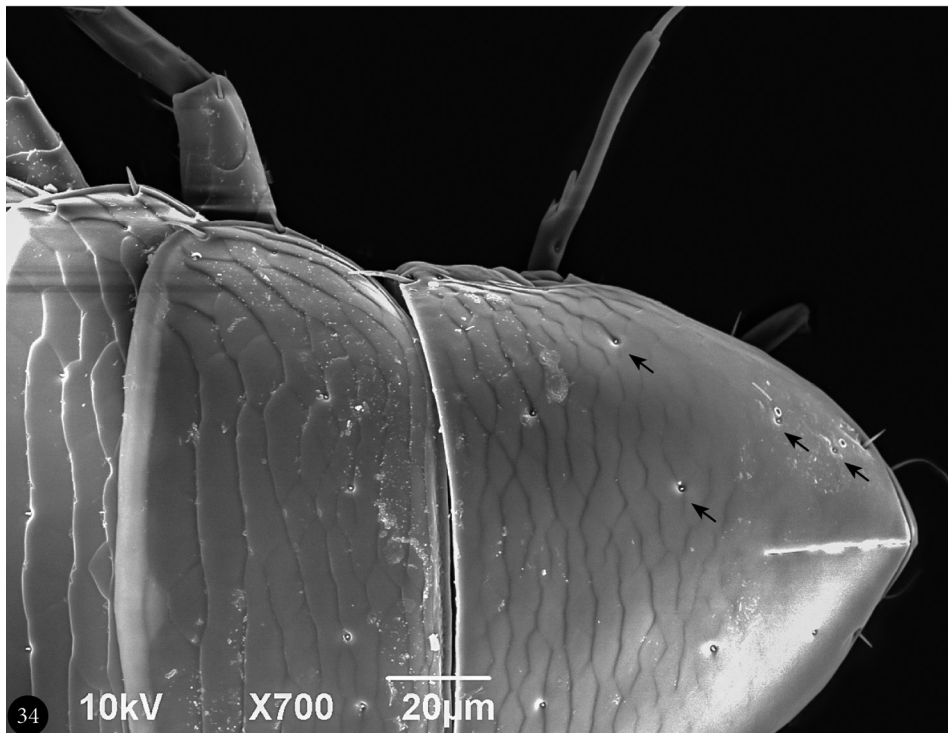
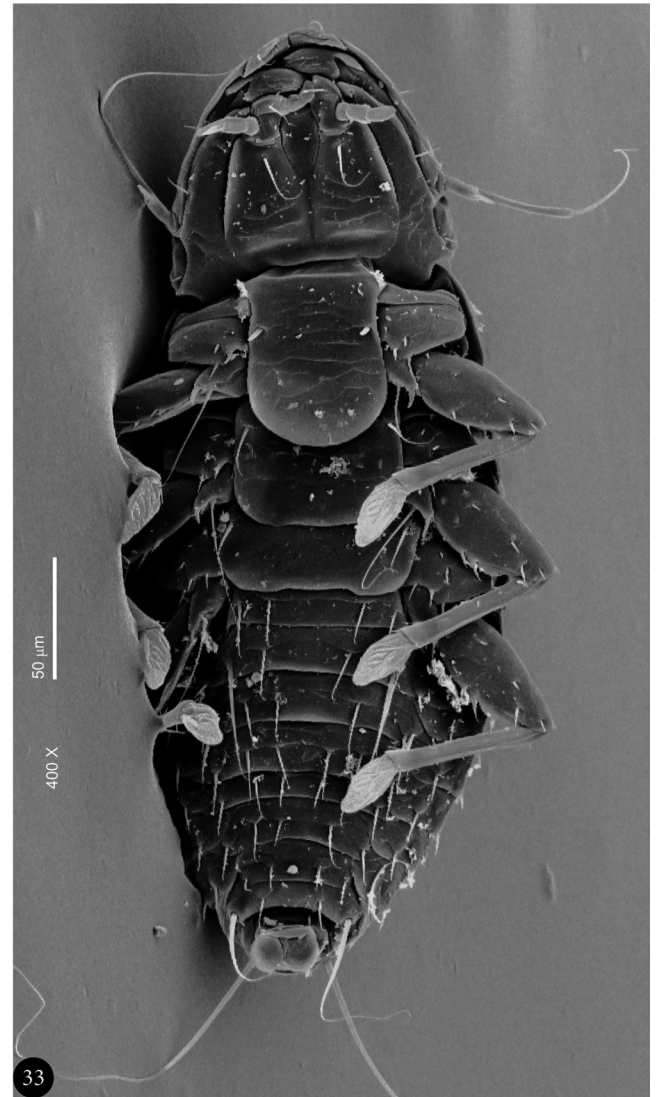
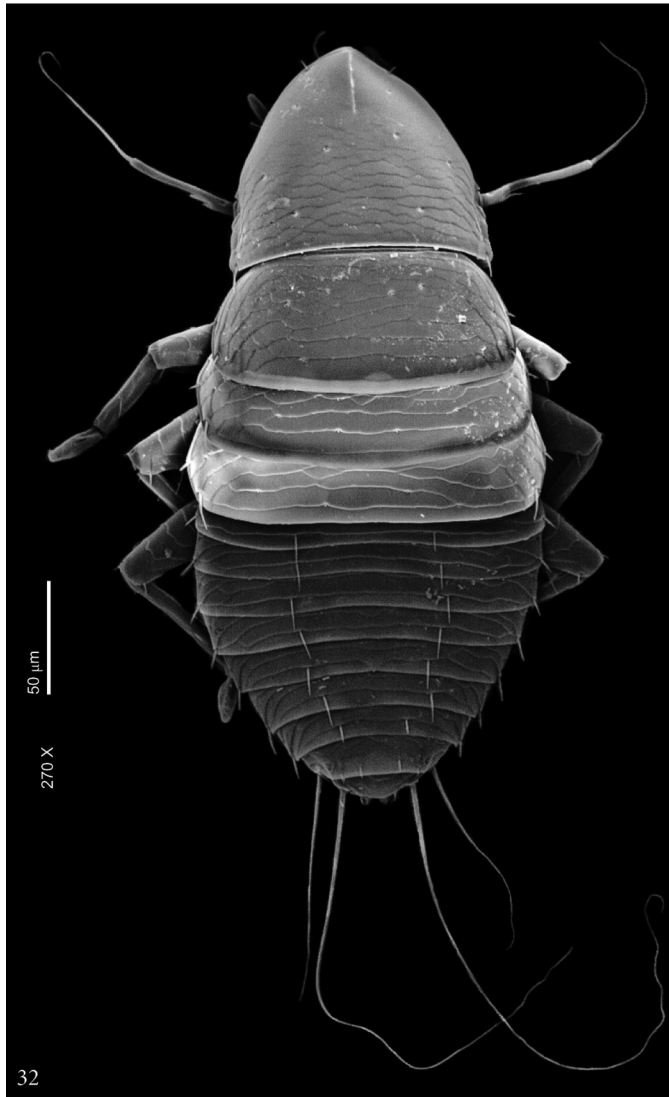
During the behavioral observation of the triungulinids, most stayed hidden among the tiny flowers of each capitulum but when the umbel was touched would hastily emerge and head towards the most apical parts of the flowers, namely the apex of the filets and styles. Interestingly, they were somehow able to distinguish



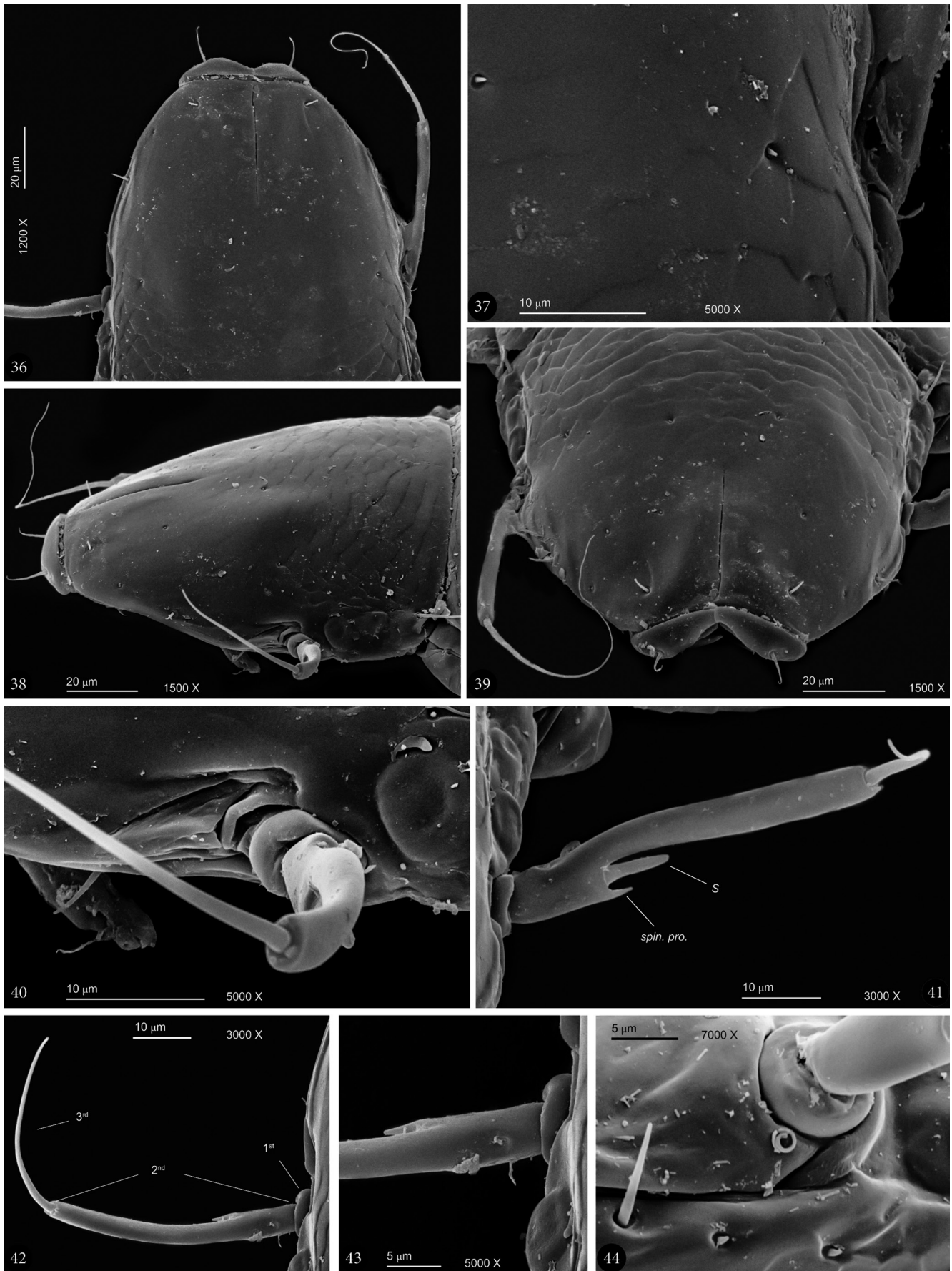
**Figures 27-29.** *Macrosiagon octomaculata* (Gerstaecker, 1855) triungulinid. Optical microscope photograph. Thorax. (27) prosternum, pros-plt – prosternal plate; (28) mesosternum, mes-plt – mesosternal plate; (29) metasternum, met-plt – metasternal plate.



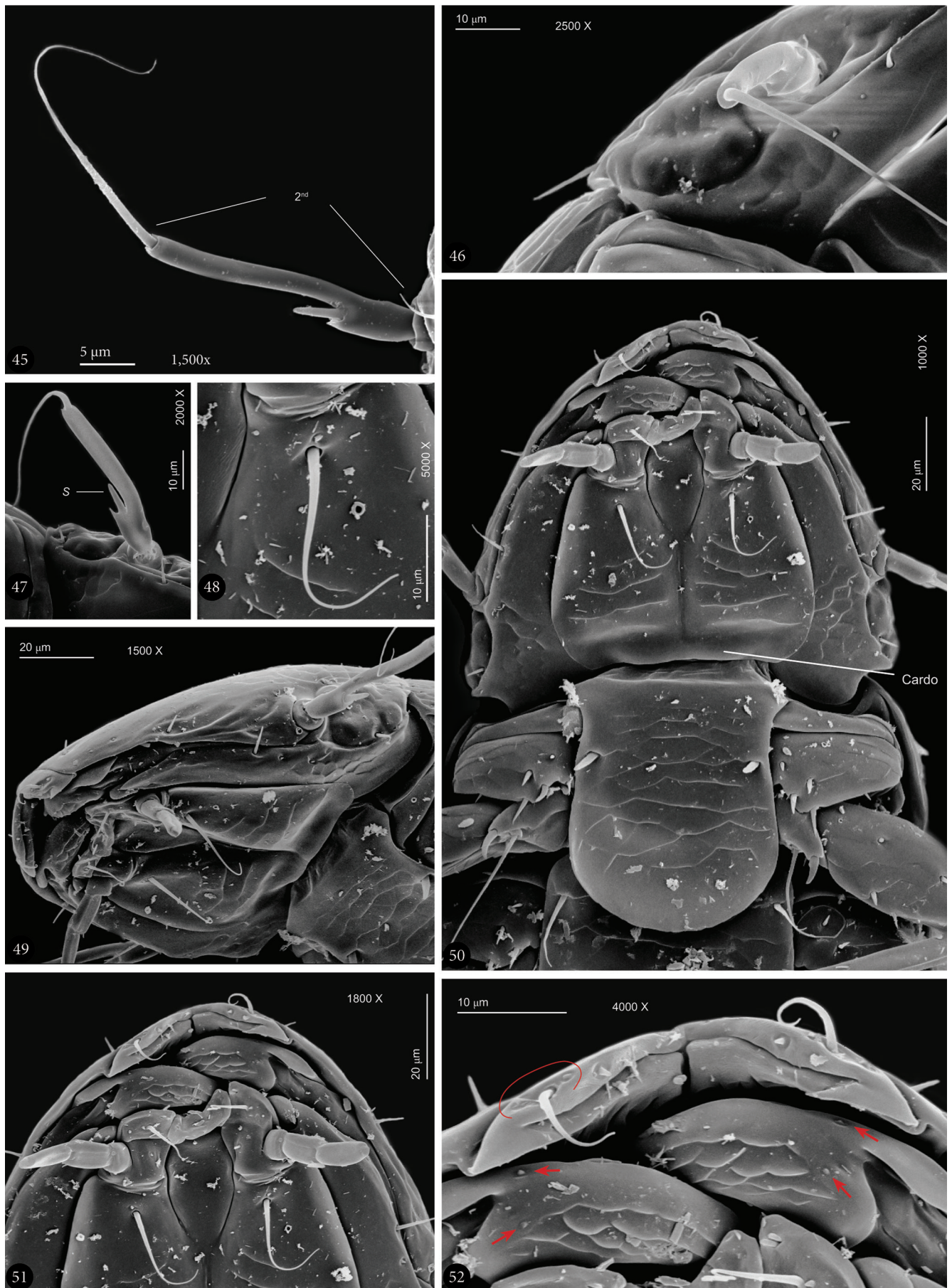
**Figures 30-31.** *Macrosiagon octomaculata* (Gerstaecker, 1855) triungulinid. Optical microscope photograph. Hind leg. (30) coxa, trochanter, and femur, ventral; (31) femur, dorsal.



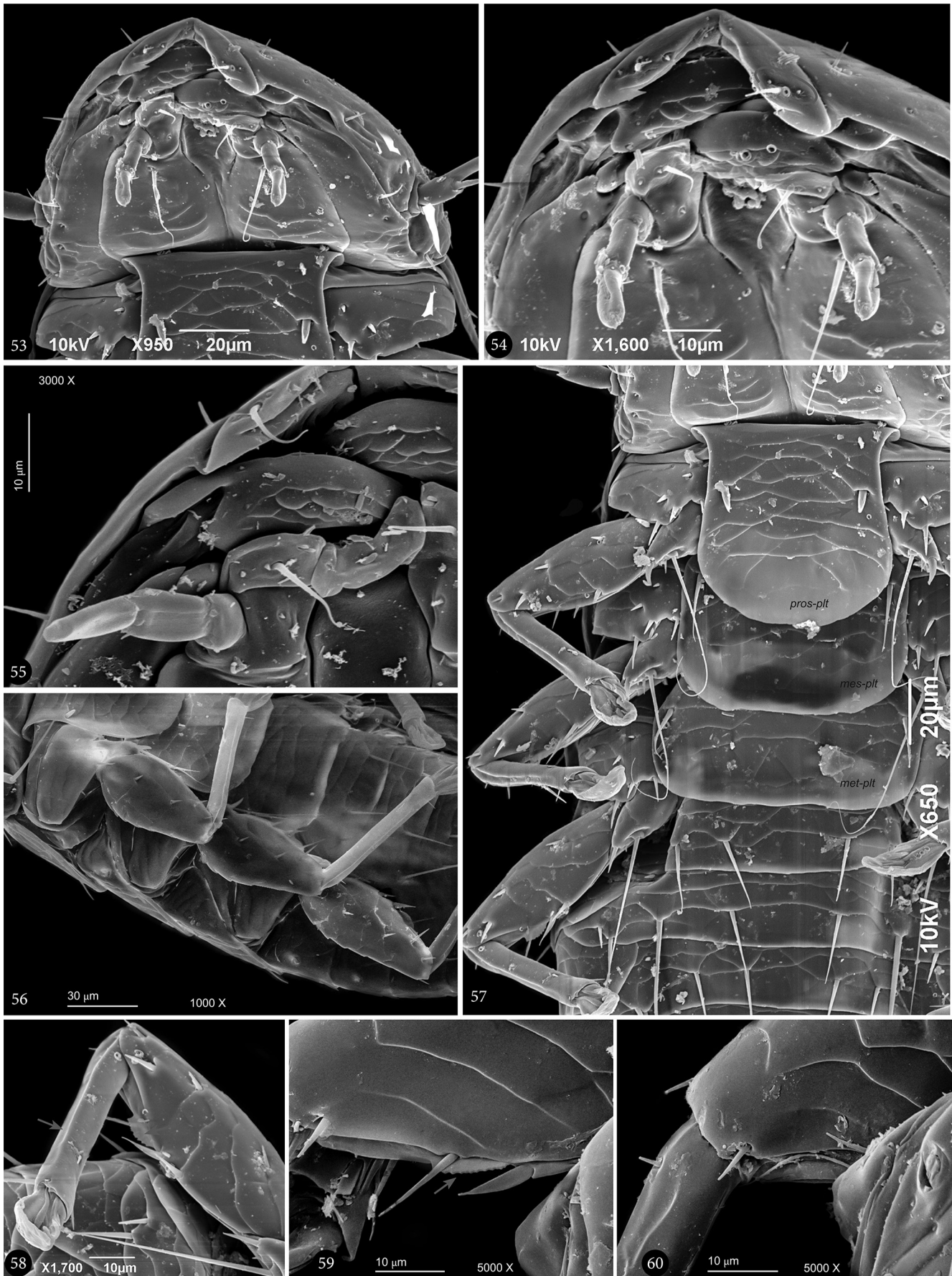
**Figures 32-35.** *Macrosiagon octomaculata* (Gerstaecker, 1855) triungulinid. SEM images. (32-33) habitus, dorsal and ventral; (34) part of head, pronotum, and mesonotum (black arrow: microsetae); (35) egg with pharate triungulinid.



**Figures 36-44.** *Macrosiagon octomaculata* (Gerstaecker, 1855) triungulinid. SEM images. (36) head, labrum, and antennae, dorsal; (37) detail of head, with short setae, and microsculpture of integument, dorsal; (38-39) head, labrum and antennae, lateral and frontal; (40) amplification of figure 38, left antenna, lateral view of head; (41) left antenna, dorso-anterior, S – sensorium; (42) left antenna, dorso-posterior; (43) detail of first antenno-mere and pore, dorso-posterior; (44) lateral view of antenno-mere insertion.



**Figures 45-52.** *Macrosiagon octomaculata* (Gerstaecker, 1855) triungulinid. SEM images. (45) right antenna, ventral; (46) right stemmata and antenna, lateral; (47) antenna, ventral, S – sensorium; (48) anterior area of right stipes; (49) head, ventro-lateral; (50) head and prothorax, ventral; (51) anterior part of head, ventral; (52) mandibles and ventro-frontal part of labrum (red circle: sensitive area of labrum; red arrow: microsetae of madibles).



**Figures 53-60.** *Macrosiagon octomaculata* (Gerstaecker, 1855) triungulinid. SEM images. (53) head, ventral; (54) anterior part of head, ventral (red circle indicates sensitive area); (55) right side of head, ventral; (56) right legs and thoracic sclerites, ventro-lateral; (57) thorax, legs and part of abdomen, ventral, pros-plt – prosteral plate, mes-plt – mesosternal plate, met-plt – metasternal plate (red arrow: stout setae of prosternum); (58) right posterior leg, ventral (red arrow: longitudinal tibial depression, femur keel); (59) part of femur of right median leg with keel (red arrow), dorsal; (60) part of femur of right anterior leg, dorsal.



movements of the umbel caused by the wind from those caused by being touched by hands or two flies landing on nearby umbels.

Although the feeding habits of adult *Macrosiagon* are mostly unknown, most are presumed to consume nectar, given their elongate proboscis-like galeae (Falin, 2002a, 2002b; Lawrence *et al.*, 2010). However, we observed a female of *M. octomaculata*, *in situ*, feeding on the anthers and entire flowers of *P. polyanthus*, which would result in the ingestion of pollen and nectar (Fig. 78). This individual was first seen touching the capitula with its extroverted distal abdominal segments (Fig. 79), despite this behavior, no eggs were found. Eventually the female was testing by the ovipositor, the suitability of substrate to lay eggs, a common behavior in female beetles (Batelka, *pers. comm.*). The beetle was collected and kept alive for behavioral observation in the laboratory but, once in captivity, it barely moved and died the following day.

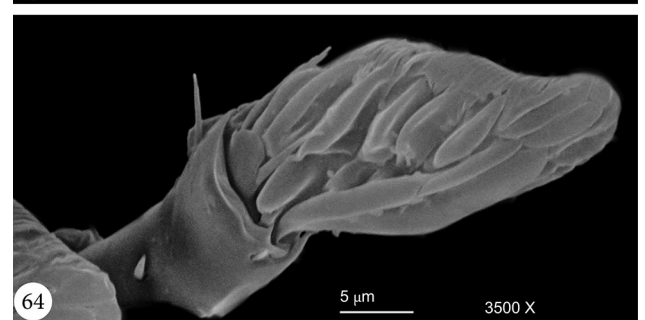
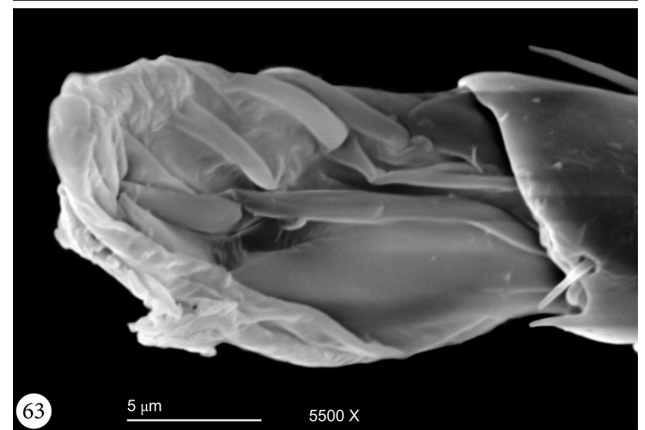
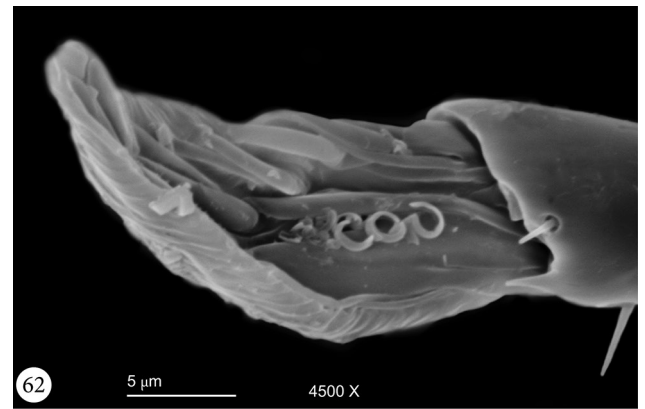
We found a few wasp species on *P. polyanthus*. Among the few specimens of *Myzinum* sp. observed, three were collected besides one *Scotaena* sp. and two males *Scotaenini* indet. One *Myzinum* sp. collected feeding on *P. polyanthus* flowers bores a triungulinid on the ventral side of its right hind wing (Figs. 70-72, 80-83). The triungulinid had its head pointing towards the host's body and its longitudinal axis parallel to the primary

wing veins (Fig. 81). This is identical to what was observed by Tomlin & Miller (1989) for the triungulinids of *Ripiphorus* sp. attached to the wings of Halictidae bees. We postulate that *Myzinum* sp. is a potential triungulinid host of *M. octomaculata* because of its compatible size, its preference for *P. polyanthus*, and for being previously reported as host to *M. sayi* triungulinids (Rivnay, 1929). But it is noteworthy that this record can be accidental since usually multiple triungulinids of Ripiphorinae were reported loading on their hymenopteran host species at the same time (Batelka, 2011a).

In terms of visited and transfer plant specificity, it is feasible that in the sampled locality *M. octomaculata* lay eggs on plant species other than *P. polyanthus*. However, our observations on the population of *P. polyanthus* from Santa Catarina Island showed an inordinate abundance and diversity of insects associated with *P. polyanthus*. This makes it unique amongst the plants of the arid restinga areas on the island. Other plant species that are similarly



**Figure 61.** *Macrosiagon octomaculata* (Gerstaecker, 1855) triungulinid. SEM images. Left side of prosternum and foreleg showing left coxa, trochanter, femur, tibia, and pad-like pretarsus, ventral.



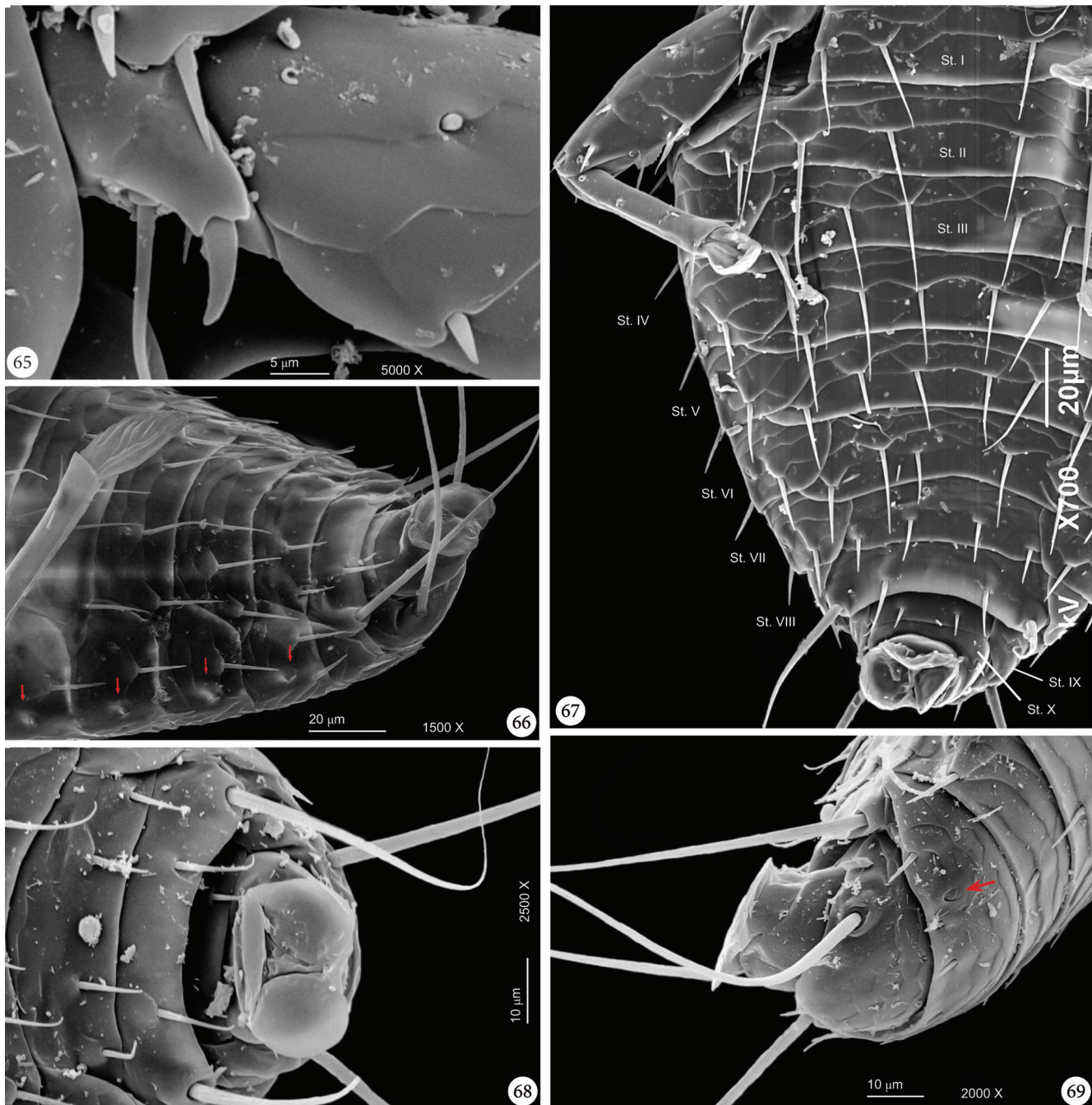
**Figures 62-64.** *Macrosiagon octomaculata* (Gerstaecker, 1855) triungulinid. SEM images. (62) median pretarsus, ventral; (63-64) posterior pretarsus, (63) ventral, (64) dorsal.

attractive to insects, although to a lesser degree, belong to the genera *Baccharis* and *Eupatorium* (both Asteraceae). Of these, we observed a few other species of wasps, including Tiphidae, feeding on the flowers of *Baccharis* sp.

### Remarks on larval morphology

Until now are known first instar larvae of three sub-families of Ripiphoridae: Ripidiinae, Ripiphorinae and Pelecotominae. The only descriptions that allow com-

parisons are for *Blattivorus inquirendus* (Silvestri, 1906), *Ripidius quadriceps* Abeille de Perrin, 1872, *Ripidius* sp. Batelka, Perkovsky & Prokop, 2019, and a longipedes larva gen. et sp. indet. Batelka *et al.*, 2019b (Ripidiinae) (Silvestri, 1906; Besuchet, 1956; Batelka *et al.*, 2019a, b); *Macrosiagon ferruginea* (Fabricius, 1775), *Metoecus paradoxus* (Linnaeus, 1761), *Ripiphorus smithi* Linsley & MacSwain, 1950, and *R. caboverdianus* Batelka & Straka, 2011 (Ripiphorinae) (Grandi, 1936; Chapman, 1870; Švácha, 1994; Linsley *et al.*, 1952; Batelka & Straka, 2011); and *Pelecotoma fennica* (Paykull, 1799) (Pelecotominae) (Švácha, 1994) (Table 3). Descriptions of *Macrosiagon tricuspидata* Lepechin, 1774 (Chobaut, 1906) and *M. cucul-*



**Figures 65-69.** *Macrosiagon octomaculata* (Gerstaecker, 1855) triungulinid. SEM images. (65) foreleg, trochanter and detail of proximal area of femur, ventral; (66) abdomen, ventro-lateral, notice lateral white spots of abdominal spiracles (red arrow); (67) abdomen and right hind leg, ventral, St. I to St. IX – Sternites I to IX. (68) abdominal appendage, ventral; (69) abdominal appendage latero-posterior, note the spiracle on abdominal segment VIII (red arrow).

**Table 3.** Comparisons of triungulinid species from three Rhipiphoridae subfamilies.

Species Characters	Rhipiphorinae				Ripidiinae			Pelecotominae	
	<i>Macrosiagon octomaculata</i>	<i>Macrosiagon ferruginea</i>	<i>Metoecus paradoxus</i>	<i>Rhipiphorus caboverdianus</i> , <i>R. smithi</i>	<i>Blattivorus inquirendus</i>	<i>Ripidius quadriceps</i>	<i>Ripidius</i> sp.	Longipedes larva <i>Ripidiinae</i> gen. et sp. indet.	<i>Pelecotoma feminea</i>
Head shape	Parabolic	Parabolic	Parabolic	Parabolic	Hexagonal	Hexagonal	Parabolic	Parabolic	
Antennae position	Posteriorly on head	Posteriorly on head	Posteriorly on head	Posteriorly on head	Posteriorly on head	Posteriorly on head	—	Anteriorly on head	
Antenna*1,2	3-antennomeres <sup>2</sup>	3-antennomeres + terminal seta	3-antennomeres <sup>1</sup>	3-antennomeres + terminal seta	3-antennomeres <sup>2</sup>	2-antennomeres + terminal macroseta	3-antennomeres + bristle-like terminal seta	3-antennomeres + terminal seta	
Sensorium shape and size	Finger-like, smaller than of antennomere II and III together	Conical, smaller than of antennomeres II and III together	Bristle-like, smaller than of antennomeres II and III together	Slender, smaller than of antennomeres II and III together	Bristle-like, long, little longer than ½ of antennomere II	Bristle-like, long, little smaller than antennomere II	Bristle-like, long, little longer than ½ of antennomeres II and III together	Thick, small, little longer than ½ of antennomeres II and III together	
Stemmata, number and layout	Present, 5, clustered, unequal in size	Present, 5, clustered, unequal in size	Present, 5	Present, 5, clustered, unequal in size	Present	Present, 4, in a row, the two more dorsal smaller than the two more ventral	Present, 4, in a row, three small, one minute	Present, 2	
Maxillary palpi**	3-articulated, distal setae absent, lateral digitiform sensillum concealed in a groove	3-articulated, distal setae absent	4-articulated (?)	3-articulated, distal setae absent, lateral grooved sensillum (?), 1 seta distally on palpomere II	2-articulated, one long distal seta on apical palpomere	2-articulated, one long distal seta on apical palpomere, 3 setae distally on palpomere II	"probably 2-articulated", one long distal seta on apical palpomere	2-articulated, one long distal seta and other small sensilla, lateral digitiform sensillum concealed in a groove	
Dorsal longitudinal median line on head	One, extending to first third	One, extending to first third	One, extending to first third	Absent	Absent	Absent	Absent	Two shallow paramedian impressions	
Femora	Short, subcylindrical	Short, subcylindrical	Short, subcylindrical	Short, cylindrical	Long, cylindrical	Medium, narrowed basally	Long, narrows in distal fifth of its length	Elongate, thickening distally	
Number of abdominal segments	10	10	10	10	9 (?)	9 (?)	10	10	
Spiracles	All thoracic segments and abdominal segment I-VIII	All thoracic segments and abdominal segment I-VIII	All thoracic segments and abdominal segment I-VIII	Mesothorax and abdominal segment VIII	?	?	?	Mesothorax and abdominal segments I-VIII	
Pretarsal structure (claw, pad)	Highly developed pad-like appendage, without claw	?	Highly developed pad-like appendage	Highly developed pad-like appendage + 1 claw-like process	Pad-like appendage + 2 claws-like processes	Pad-like appendage + 2 claws-like processes	Minute pad-like claw-like process	Pad-like appendage + 1 claw-like process	
Abdominal appendage	Bilobate	Bilobate	Bilobate	1-segmented (rounded?)	3-segmented, tubular	3-segmented, tubular	Absent	Present – "Tenth segment forming anal sucker" (Švácha, 1994)	
Terminal seta	Very long, about 6× as long as length of femora	Very long, about 4× as long as length of femora	Small, about 1.14× as long as length of femora	Small, as long as length of femora	Long, 2× as long as length of femora	Small, as long as length of femora	Small, smaller than length of femora	Long (length impossible to precise)	
Types of sensilla	Finger-shaped, bristle like, microsetae	Finger-shaped, bristle like, microsetae	Finger-shaped, bristle like, microsetae	Bristle like, microsetae	Finger-shaped, bristle like	Finger-shaped, bristle like	Finger-shaped, bristle like	Bristle like (?)	

\*1: In the antennae with 2-antennomeres (*R. quadriceps*) and 3-antennomeres<sup>2</sup> (*M. octomaculata*, *B. inquirendus*), the antennomere II corresponds to antennomeres II and III together of the 3-antennomeres<sup>1</sup> (*Me. paradoxus*) and 3-antennomeres + terminal seta (*M. ferruginea*, *R. caboverdianus*, *R. smithi*, *Ripidius* sp., *Pelecotoma feminea*).  
 \*\* Maxillary palpi described to *Blattivorus inquirendus* as 3-articulated (Besuchet, 1956), however, we are here considering the "third palpomere" a distal seta.  
 Species and used references: *Macrosiagon octomaculata* (present work); *Macrosiagon ferruginea* (Grandi, 1936); *Metoecus paradoxus* (Chapman, 1870; Švácha, 1994); *Rhipiphorus caboverdianus*, *R. smithi* (Linsley et al., 1952; Batelka & Straka, 2011); *Blattivorus inquirendus* (Silvestri, 1906); *Ripidius quadriceps* (Besuchet, 1956); *Ripidius* sp. (Batelka et al., 2019a); longipedes larva Ripidiinae gen. et sp. indet. (Batelka et al., 2019b); *Pelecotoma feminea* (Švácha, 1994).

*lata* (Macleay, 1887) (Jarvis, 1922) are short, little detailed and poorly illustrated.

Morphological differences between the sister genera *Macrosiagon* and *Metoecus* triungulinids are tenuous. Chobaut (1891a) was the first to highlight the close resemblances between them. However, a few important taxonomical details were not described, mainly regarding the head, pretarsus and posterior abdomen, possibly owing to the methodological limitations of the time. Agreeing with Chobaut (1891a), we concluded that the triungulinid morphologies of all species in the tribe Macrosiagonini are similar and extended the similarities to all species within the genus *Macrosiagon* along with *Me. paradoxus*.

Despite the sharing of several characters between triungulinids of *Macrosiagon* and *Metoecus*, subtle differences are nevertheless discernible in the SEM images between *M. octomaculata* and *Me. paradoxus* (see Švácha, 1994 for *Me. paradoxus*). Compared to *Macrosiagon octomaculata* (in parentheses) the head of *Metoecus paradoxus* is dorsally irregularly striated transversally, with fine and feebly elevated lines (vs. head striated posteriorly, after ending of longitudinal mid-dorsal line); longest setae on sternum VIII, and tergum IX smaller than in *Macrosiagon*; abdominal segment X rectangular, longer than wide (vs. subquadrate, slightly wider than long); keels at the ventral margin of median and hind legs absent (vs. present). Nevertheless, as molecular evidence recovers *Metoecus* internal to *Macrosiagon* (Batelka *et al.*, 2016), these differences may only concern to species boundaries of the same genus.

The abdominal appendage is a membranous region which can be partially invaginated (Grandi, 1936; Tomlin & Miller, 1989) and has not been described for *Macrosiagon* (Grandi, 1936), *Ripiphorus* (Linsley *et al.*, 1952; Batelka & Straka, 2011), *Metoecus* triungulinids (Chapman, 1870; Švácha, 1994), and *Pelecotoma fennica* (Švácha, 1994). The term pygopod was used to designate the membranous and retractable terminal region of the abdomen (Grandi, 1936), which Chobaut (1891a, b) referred to as a modification related to host adhesion and for which Tomlin & Miller (1989) confirmed the capacity for adhesion to smooth substrates. Tomlin & Miller (1989) defined the pretarsus as being characterized by leaf-shaped pulvilli or an inflatable lobe and Pohl & Beutel (2004) termed it the pretarsal bladder, which they defined as a highly developed membranous lobe or pad. However, the most recent study on extant Ripidiinae larvae (Batelka *et al.*, 2019a) applied the term abdominal appendage, which we follow. Batelka (2011a) highlighted the need for a more detailed description of this phoretic character. Based on the illustrations presented in the above-mentioned literature and this study for all Ripiphorinae genera we noticed that the abdominal appendages of *Macrosiagon* are bilobate and one-segmented, *Metoecus* seem to be bilobate and one-segmented, and *Ripiphorus* appear to be undivided and one-segmented. In Ripidiinae the abdominal appendage shape is more variable between genera and in some cases absent. In *Blattivorus inquirendus* is tubular and

one-segmented (see fig. 10 in Silvestri, 1906), in the two *Ripidius* species are three-segmented and tubular, and absent in the longipedes larva of Ripidiinae gen. *et sp.* indet. For *Pelecotoma* the images do not allow comparison. This indicates the potential use of the abdominal appendage (if present) as a taxonomic character to distinguish Ripidiinae from Ripiphorinae.

In the literature, the number of abdominal segments of ripiphorid triungulinids was assumed to be nine (Silvestri, 1906; Böving & Craighead, 1931; Besuchet, 1956; Bologna *et al.*, 2010), nine or 10 (Chapman, 1870) and 10 (Grandi, 1936; Costa *et al.*, 1988; Linsley *et al.*, 1952; Selander, 1991a, b; Švácha, 1994; Lawrence *et al.*, 2010; Batelka *et al.*, 2019a, b; this study). This variation is likely related to the retractable nature of the abdominal appendage and the methods used to study the larvae. Based on our observations, we could correlate methods of specimen preparation with the pleura distension or contraction. Depending on the preparation performed (ethanol, KOH + acetic acid or lactic acid) the form of the abdominal segments varies, especially the distal segments, explaining this discrepancy between the numbers of visible segments.

Linsley *et al.* (1952) was the first to point out the variations between the triungulinids of *Macrosiagon* and *Ripiphorus*. Compared to *Ripiphorus* (in parentheses), the triungulinids of *Macrosiagon* are more elliptical (vs. subcylindrical), bear a longitudinal mid-dorsal line on



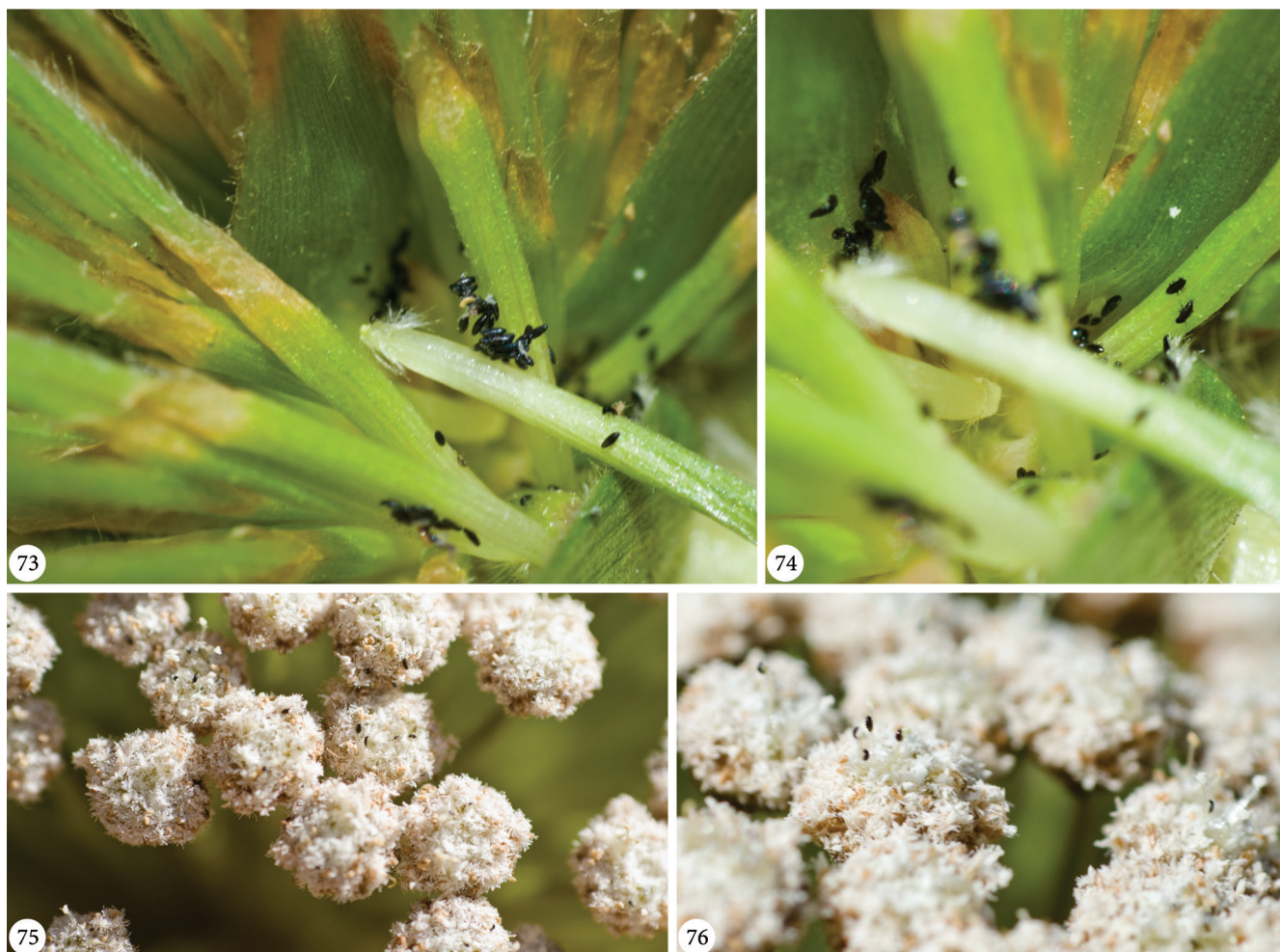
**Figures 70-72.** *Myzinum* sp. (Thynnidae) habitus. (70) lateral; (71) dorsal; (72) fronto-dorsal. Scale bar refers only to Figure 70.

the head (vs. absent); possess eight pairs of spiracles on abdominal pleura and three pairs on the thorax (vs. spiracles on mesothorax and abdominal segment VIII); one pair of long setae on sternum VIII and tergum IX, setae are longer than segments VI to X (vs. short setae, setae shorter or about as long as segment X) (apicolateral setae in Batelka & Straka, 2011) and abdominal segment X is subquadrate with a bilobate appendage (conical, not accessed). Also, following our interpretation of the antennomeres (see below), the antennomere II of *Macrosiagon* triungulinids are one third longer than in *Ripiphorus*; and the cardo and stipes are not fused (vs. fused).

Distinctions between *Macrosiagon* and the Ripidiinae genera *Blattivorus* and *Ripidius* are remarkable. Among the most noticeable are (*Macrosiagon* in parenthesis): head length almost equal or shorter than head width (almost equal or greater); sternal thoracic plates absent, or apparently present but small in *Blattivorus* (present and well developed going beyond coxa); tibia strongly thinned compared to femur, longer than femur and bearing several setae, posterior tibia longer than others in *Blattivorus* (tibia of subequal thickness compared to femur, almost as long as femur and bearing a couple of setae, equal in length); the chaetotaxy of Ripidiinae is composed of several stout setae dorsally on head, dor-

sally and ventrally on thoracic segments and on few abdominal sternites, besides filiform setae (only one pair of stout setae on prosternal plate); one long seta present distally on apical maxillary palpomere, as long as or longer than all palpomeres together (seta absent). However, still more different from *Macrosiagon* is *Pelecotoma*. The latter is supposed not to bear phoretic habit and thus, does not bear the common triungulinid forms of first instar Ripiphoridae (Švácha, 1994). The body form of *Pelecotoma* first instar larva is slender and elongate, some parts are barely sclerotized, antennae reduced comparing to head length, only two stemmata are present and pretarsus bears a sickle-like claw. Further comparisons are present in Table 3.

Batelka *et al.* (2019a) discussed on the discrepancy between the interpretations of the number of antennomeres in Ripiphoridae larvae by different authors – Silvestri (1906), Grandi (1936), Besuchet (1956) and Švácha (1994). Batelka concluded that it is impossible to decide whether the arrangement of larval antennomeres of *Ripidius* sp. is the same from other described Ripidiinae – *Blattivorus inquirendus* (Silvestri, 1906) and *Ripidius quadriceps* (Besuchet, 1956) – or if it has been overlooked in these Ripidiinae, or yet, if it is an artefact of fossilization. Moreover, Batelka pointed out that his



**Figures 73-76.** *Macrosiagon octomaculata* (Gerstaecker, 1855) and *Paepalanthus polyanthus* Bong (Sano). (73-74) eggs with pharate triungulinids and triungulinids recently hatched on the base of scapes; (75-76) triungulinids actively occupying the upper part of the plant, crawling on the flowers and at the top of anthers.



**Figures 77-83.** *Macrosiagon octomaculata* (Gerstaecker, 1855) and *Myzinum* sp. (Thynnidae) in natural habit. (77) light brown phenotype female resting on *Paepalanthus polyanthus* leaves; (78) female in the field feeding on capitula of *P. polyanthus*; (79) female with ovipositor everted touching flowers of capitula; (80) *Myzinum* sp. feeding on the flowers of umbel; (81) *Myzinum* sp. with one triungulinid anchored on its wing, note that larva is facing towards the wasp body and parallel to the wing vein; (82-83) triungulinid attached to the wasp wing, (82) lateral, (83) dorso-lateral.

interpretation (3 antennomeres plus 1 terminal bristle-like seta) is corroborated by Švácha (1994) (studying *Pelecotoma*) and Grandi (1936) (studying *Macrosiagon*). Batelka *et al.* (2019a) interpretation also agrees with those of Chobaut (1906), Linsley *et al.* (1952) and Batelka & Straka (2011). However, based on our SEM images and on observations under optic microscopy after lactic and acetic acid treatments of the triungulinids, our interpretation agrees with the interpretation of Silvestri (1906) and Besuchet (1956). This last interpretation also understands an antennae with 3 antennomeres antennae, but, in another way, considering the terminal bristle like setae as the third whip-like antennomere, and what was previously interpreted as antennomeres II and III is here, considered the antennomere II. These previous interpretations seem to be the result of the constriction on the basal third of the antennomere II that appears as a division between segments under optic microscopy, but is evident in SEM images. Unfortunately, the antennal descriptions of *Ripiphorus* do not provide SEM images and relevant information on these characters to determine whether they too share the same antennal structure and thus, further investigation is required to confirm this.

Likewise, light microscopy only enables the observation of abdominal spiracles on segment eight, which are located dorsally and are the easiest to observe. However, SEM images provided the first observations of spiracles on all thoracic segments as well as on abdominal segments I to VII. Therefore, the usage of SEM images is an essential tool for the study and characterization of triungulinid morphology.

The phoretic habits of *M. octomaculata* triungulinids involve their attachment to flying hosts for transport to the host species' nest. Tomlin & Miller (1989) examined the strength of forces involved in their attachment to the host's wing and found at least three forces involved: centripetal acceleration ("the tendency to 'throw' the attached ripiphorid towards wing apex because of rotation around wing hinge"), tangential acceleration ("approximately perpendicular to the wing"), and aerodynamic drag. As a result, structures are present that ensure that these forces are overcome and the triungulinid reaches the host's nest. Most relevant are the sucker-like pretarsi, which they share with Strepsiptera triungulinids; and the soft, sucker-like and moveable abdominal appendage (Selander, 1991a; Pohl & Beutel, 2004, 2008; Tomlin & Miller, 1989). However, these structures alone may not be enough to prevent detachment from the Hymenoptera wing during flight.

Other characters that are likely associated with the phoresy include:

- 1) The antenna. The prolongation of the antennomere after the sensorium is uncommon in Coleoptera larvae (Costa *et al.*, 1988), however, there is relatively scarce information regarding first instar morphology. We suggest that the prolongation of the antennomere II to beyond sensorium in association with the spine adjacent the sensorium and the whip-like third antennomere are morphological features related to the phoretic habits of first instar Coleoptera. It is presumably involved in anchoring the larvae to the host during its phoretic phase (Figs. 82-83). In families in which the first instar larvae show similar phoretic behavior, namely the Ripiphoridae and Meloidae, the antennae share these similar morphological characters. On the other hand, triungulinids of Strepsiptera lack developed antennae. However, Strepsiptera first instar larvae display a wide range of mechanisms to attach themselves to their hosts, besides having more specialized morphological structures covering the entire body that enhance their anchorage to the host. In the families Xenidae and Stylopidae, which display phoresy, like Ripiphoridae, morphological structure associated to phoretic adhesion are remarkable, as modified labium structures and the well-developed rows of robust spine-like prolongations on body segments (Batelka, *pers. comm.*; Linsley *et al.*, 1952; Selander, 1991a, b; Švácha, 1994; Pohl, 2002; Pohl & Beutel, 2004; Batelka & Straka, 2011).
- 2) Ventral setae. The ventral setae are all posteriorly orientated. This may assist in attachment to the host and provide an answer to the question of "Why do triungulins lie parallel to the main vein and always face their heads towards the body of the halictid host" (Tomlin & Miller, 1989). In this position the longitudinal axis of a triungulinid is parallel to the direction of centripetal acceleration, and thus, the ventral setae oppose this force, keeping it attached.
- 3) Attachment to a vein. As for all the triungulinids found on host wings by Tomlin & Miller, (1989), those that we found were attached to a wing vein. Veins are sclerotized and therefore less susceptible to surface instability than the membranous area. Furthermore, the stability of the triungulinid body is improved by the four long setae on sternum VIII and tergum IX, which may act similarly to the tail of a kite, to enhance balance and reduce drag.
- 4) The design of the integument surface is important to reduce friction (Luo *et al.*, 2015). For triungulinids, the integument surface resembles other surfaces that are known to increase slip velocity, decreasing drag at the high air speeds experienced by the larvae (Chear & Dol, 2015; Razzak, 2018). Nevertheless, the aerodynamic qualities of the triungulinid integument surface requires testing using experimental models.

## ACKNOWLEDGMENTS

We are very grateful to Sônia Casari and Gabriel Biffi for the invitation to submit a manuscript in this special issue of PAZ celebrating the 80<sup>th</sup> birthday of Prof. Cleide Costa; and to Jan Batelka and one anonymous reviewer for providing comments and corrections on the manuscript. We also thank Elise L. Galitzk (Universidade Federal de Santa Catarina – UFSC) for showing us the first *Macrosiagon octomaculata* from *P. polyanthus*; Carlos Eduardo V.B.D. de Siqueira (Centro de Informática e Automação do Estado de Santa Catarina) for helping

in field work; Carlos José de C. Pinto, Benedito C. Lopes and Josefina Steiner for their support at UFSC; Zachary H. Falin (University of Kansas, Biodiversity Institute, USA) and Lynn S. Kimsey (University of California – UC Davis, USA) for verifying the Ripiphoridae and wasp identification respectively; Jan Batelka (Charles University, Czech Republic) for supplying us with references; Michel P. Valim (MZSP) for access to the optical microscope linked to digital camera and for suggestions on triungulinid treatment; André Vieira da Rosa (in memoriam) for aerial photography of the collection field; Carlos R.F. Brandão and Marcelo Duarte for access to MZSP facilities; Letícia de Almeida Gonçalves for access to UFG facilities; and Fundação de Amparo à Pesquisa do Estado de São Paulo – FAPESP and Conselho Nacional de Desenvolvimento Científico e Tecnológico – CNPq for financial support to F.F. Albertoni (FAPESP 2012/02441-1) and M.A. Ulysséa (FAPESP 2012/21309-7, 2015/06485-1, 2018/11453-0; PROTAX/FAPESP 2016/50378-8). The scientific contributions proposed here were only possible by funding and support of various institutions, which have been severely threatened by the Brazilian government.

## REFERENCES

- Andrade, M.J.G. de; Giulietti, A.M.; Rapini, A.; Queiroz, L.P. de; Conceição, A. de S.; Almeida, P.R.M. de & Berg, C. van den. 2010. A comprehensive phylogenetic analysis of Eriocaulaceae: Evidence from nuclear (ITS) and plastid (psbA-trnH and trnL-F) DNA sequences. *Taxon*, 59(2): 379-388.
- Barber, H.S. 1915. *Macrosiagon flavipennis* in cocoon of *Bembex spinolae* (Coleoptera: Rhipiphoridae). *Proceedings of the Entomological Society of Washington*, 17: 187-188.
- Barclay, M.V.L. 2015. *Ivierhipidius*, an enigmatic new Neotropical genus of Ripiphoridae (Coleoptera: Tenebrionoidea) with four new species. *Acta Entomologica Musei Nationalis Pragae*, 55(2): 691-701.
- Batelka, J. 2004. Contribution on the synonymy of Palaearctic and Oriental species of *Macrosiagon* (Coleoptera: Ripiphoridae). Part II. *Acta Societatis Zoologicae Bohemicae*, 68: 9-13.
- Batelka, J. 2007. Taxonomy and distribution of Palaearctic and Oriental species of the genus *Macrosiagon* (Coleoptera: Ripiphoridae). Part III. *Bulletin de la Société Entomologique de France*, 112: 239-248.
- Batelka, J. 2010. A review of Ripiphoridae in the Arabian Peninsula (Coleoptera: Tenebrionoidea). *Acta Entomologica Musei Nationalis Pragae*, 50(1): 157-166.
- Batelka, J. 2011a. *Primary larvae of some Ripiphorinae: their phoresy and dispersal* (Coleoptera: Ripiphoridae). *Acta Entomologica Musei Nationalis Pragae*, 51(2): 731-756.
- Batelka, J. 2011b. Contribution to the synonymies, distributions, and bionomics of the Old World species of *Macrosiagon* (Coleoptera: Ripiphoridae). *Acta Entomologica Musei Nationalis Pragae*, 51(2): 587-626.
- Batelka, J. 2013. A review of the genus *Macrosiagon* in Laos (Coleoptera: Ripiphoridae). *Entomologica Basiliensis et Collections Frey*, 34: 319-325.
- Batelka, J. & Chaboo, C.S. 2015. Beetles (Coleoptera) of Peru: A Survey of the Families. Ripiphoridae Gemminger and Harold, 1870. *Journal of the Kansas Entomological Society*, 88(3): 399-403. DOI
- Batelka, J. & Hoehn, P. 2007. Report on the host-associations of the genus *Macrosiagon* (Coleoptera: Ripiphoridae) in Sulawesi (Indonesia). *Acta Entomologica Musei Nationalis Pragae*, 47: 143-152.
- Batelka, J. & Straka, J. 2011. *Ripiphorus caboverdianus* sp. nov. – the first ripiphorid record from the Macaronesian volcanic islands (Coleoptera: Ripiphoridae: Ripiphorinae). *Zootaxa*, 2792: 51-62.
- Batelka, J.; Kundrata, R. & Bocak, L. 2016. Position and relationships of Ripiphoridae (Coleoptera: Tenebrionoidea) inferred from ribosomal and mitochondrial molecular markers. *Annales Zoologici*, 66(1): 113-123. DOI
- Batelka, J.; Perkovsky, E.E. & Prokop, J. 2019a. Diversity of Eocene Ripiphoridae with descriptions of the first species of Pelecotominae and larva of Ripidiinae (Coleoptera). *Zoological Journal of the Linnean Society*, 188(2): 412-433. DOI
- Batelka, J.; Prokop, J.; Pohl, H.; Bai, M.; Zhang, W. & Beutel, R.G. 2019b. Highly specialized Cretaceous beetle parasitoids (Ripiphoridae) identified with optimized visualization of microstructures. *Systematic Entomology*, 44: 396-407. DOI
- Bequaert, J.C. 1918. A revision of the Vespidae of the Belgian Congo based on the collection of the American Museum Congo Expedition, with a list of Ethiopian diplopterous wasps. *Bulletin of the American Museum of Natural History*, 39: 1-384.
- Besuchet, C. 1956. Biologie, morphologie et systématique des *Rhipidius*. *Mitteilungen der Schweizerischen Entomologischen Gesellschaft*, 29: 73-144.
- Bologna, M.A.; Turco, F. & Pinto, J.D. 2010. 11.19 Meloidae Gyllenhal 1810. In: Leschen, R.A.B.; Beutel, R.G. & Lawrence, J.F. (Eds.). *Coleoptera, Beetles. Vol. 2: Morphology and systematics (Elateroidea, Bostrichiformia, Cucujiformia partim)*. Berlin, Walter de Gruyter. p. 681-693. (Handbook of Zoology, Arthropoda: Insecta)
- Böving, A.G. & Craighead, F.C. 1931. An illustrated synopsis of the principal larval forms of the order Coleoptera. *Entomologica Americana*, 11: 1-351.
- Callan, E. McC. 1981: Further records of *Macrosiagon* (Coleoptera: Rhipiphoridae) reared from eumenid and sphecid wasps in Australia. *Australian Entomological Magazine*, 7: 81-83.
- Campbell, J.M. 1991. Family Rhipiphoridae: wedge-shaped beetles. In: Bousquet, Y. (Ed.). *Checklist of Beetles of Canada and Alaska*. Ottawa, Agriculture Canada, Research Branch. p. 250-251. (Publication 1861/E).
- Castellani, T.T. & d'Êça-Neves, F.F. 2000. Population ecology of *Paepalanthus polyanthus*: Predispersal hazards and seed production. *Acta Botânica Brasileira*, 14(3): 317-326.
- Castellani, T.T.; Scherer, K.Z. & Paula, G.S. 2001. Population ecology of *Paepalanthus polyanthus* (Bong.) Kunth: demography and life history of a sand dune monocarpic plant. *Revista Brasileira de Botânica*, 24(2): 123-134.
- Castellani, T.T.; Vieira, S. & Scherer, K.Z. 1996. Contribuição ao conhecimento da distribuição espacial de *Paepalanthus polyanthus* (Bong.) Kunth (Eriocaulaceae) em áreas de baixada úmida de dunas. *Acta Botânica Brasileira*, 10: 25-36.
- Chapman, T.A. 1870. Some facts towards a life-history of *Rhipiphorus paradoxus*. *Annals and Magazine of Natural History, Serie 4*, 6: 314-326.
- Chear, C.K. & Dol, S.S. 2015. Vehicle Aerodynamics: Drag Reduction by Surface Dimples. *International Journal of Mechanical, Aerospace, Industrial, Mechatronic and Manufacturing Engineering*, 9(1): 202-205.
- Chobaut, A. 1891a. Mœurs et métamorphoses de *Emenadia flabellata* F. Insecte coléoptères de la famille des Rhipiphorides (1). *Annales de la Société Entomologique de France*, 60: 447-456.
- Chobaut, A. 1891b. Mœurs et métamorphoses de *L'Emenadia flabellata*. *Annales des Sciences Naturelles, Zoologia et Paléontologia*, 12: 97-112.
- Chobaut, A. 1895. Étude sur les *Macrosiagon* Hentz (*Emenadia* Lap.-Cast.) de la région méditerranéenne. I. Mœurs et métamorphoses des *Macrosiagon*. *L'Abeille Journal d'Entomologie*, 28: 181-183.
- Chobaut, A. 1906. Le triungulinide de *Macrosiagon tricuspidata* Lepech. [Col.]. *Bulletin de la Société Entomologique de France*, (1906): 270-272.



- Cillo, D.; Mura, R. & Bazzato, E. 2019. On the presence of *Macrosiagon ferruginea* (Fabricius, 1775) in northern Tunisia (Coleoptera, Ripiphoridae, Ripiphorinae, Macrosiagonini). *Entomological News*, 128(4): 351-355. DOI
- Clausen, C.P. 1940. *Entomophagous Insects*. New York, McGraw-Hill. x + 688p.
- Clausen, C.P. 1976. Phoresy among entomophagous insects. *Annual Review of Entomology*, 21: 343-367.
- Coll, F.E. 1942. Los representantes catalanes de la familia "Rhipiphoridae" (Col.). *Anales de la Escuela de Peritos Agrícolas y Superior de Agricultura y de los Servicios Técnicos de Agricultura*, 2(4): 335-346.
- Costa, C.; Vanin, S.A. & Casari-Chen, S.A. 1988. *Larvas de Coleoptera do Brasil*. São Paulo, Museu de Zoologia, Universidade de São Paulo. 282p.
- Davis, J.J. 1919. Contributions to knowledge of the natural enemies of Phyllophaga. *Bulletin of the Illinois State Natural History Survey Bulletin*, 13: 53-138 + 15 pl.
- Dodd, A.P. 1917. The Cane Grubs of Australia. Part II. Being a continuation of the results of investigations as commenced in Bulletin No. 2. *Bulletin. Division of Entomology, Bureau of Sugar Experiment Stations, Queensland*, 6: 1-30.
- Elliott, M.G. 2011. Annotated catalogue of the Australian Scoliidae (Hymenoptera). *Technical Reports of the Australian Museum*, 22: 1-17. DOI
- Evans, H.E.; Matthews, R.W. & Hoo, A. 1966. Notes on the nests and prey of six species of *Pison* in Australia (Hymenoptera: Sphecidae). *Psyche*, 87: 221-230.
- Falin, Z.H. 2002a. Ripiphoridae Gemminger and Harold 1870 (1853). In: Arnett, R.H.; Thomas, M.C.; Skelley, P.E. & Frank, J.H. (Eds.). *American Beetles. Volume 2, Polyphaga: Scarabaeoidea through Curculionoidea*. Florida, CRC Press. p. 431-444.
- Falin, Z.H. 2002b. Notes on the South American ripiphorid *Macrosiagon vittula* (Coleoptera: Ripiphoridae). *Entomological News*, 113(3): 192-196.
- Falin, Z.H. 2003. *Phylogenetic analysis and revision of the genera and subfamilies of Ripiphoridae (Coleoptera)*. PhD Thesis, University of Kansas. 560p.
- Falin, Z.H. 2004. Revision of three new world *Macrosiagon* Hentz species (Coleoptera: Ripiphoridae: Ripiphorinae) with a discussion of phylogenetic relationships within the Macrosiagonini. *The Coleopterists Bulletin*, 58: 1-19.
- Falin, Z.H. & Engel, M.S. 2014. A new genus and two new extant species closely allied with the fossil genus *Pauroripidius* (Coleoptera: Rhipiphoridae). *Journal of the Kansas Entomological Society*, 87(4): 333-344.
- Falin, Z.H.; Arneson, L.C. & Wcislo, W.T. 2001. Night-flying sweat bees *Megalopta genalis* and *Me. Acuadoria* (Hymenoptera: Halictidae) as host of the Parasitoid beetle *Macrosiagon gracilis* (Coleoptera: Rhipiphoridae). *Journal of the Kansas Entomological Society*, 73(3): 183-185.
- Farines, M. 1826. Observations sur la larve du *Rhipiphorus bimaculatus*. *Annales des Sciences Naturelles, Paris*, 8 : 244.
- Fernández, F.F. & Sharkey, M.J. (Eds.). 2006. *Introducción a los Hymenoptera de la región neotropical*. Bogotá D.C., Sociedad Colombiana de Entomología y Universidad Nacional de Colombia. xxx + 894p.
- Genaro, J.A. 1996. Nest parasites (Coleoptera, Diptera, Hymenoptera) of some wasps and bees (Vespidae, Sphecidae, Colletidae, Megachilidae, Anthophoridae) in Cuba. *Caribbean Journal of Science*, 32(2): 239-240.
- Gerstaecker, A. 1855. *Rhipiphoridum Coleopterorum familiae dispositio systematica*. Berolini, Friderici Nicolai. 36p.
- González, U. & Juárez, G. 2016. Primer registro de *Macrosiagon octomaculata* (Gerstaecker, 1855) para Perú (Coleoptera: Ripiphoridae). *Boletín de la Sociedade Entomológica Aragonesa*, 59: 290.
- Grandi, G. 1936. Morfologia ed etologia comparata di Insetti a regime specializzato. *XII Macrosiagon ferrugineum flabellatum* F. *Bollettino dell' Istituto di Entomologia della Università di Bologna*, 9: 33-34.
- Heitmans, W.; Heitmans, R.B.; Peeters, T.M.J.; Rond, J. de & Smit, J. 1994. A survey of the Western European Rhipiphoridae including the first record of a *Macrosiagon* species in the Netherlands (Coleoptera). *Entomologische Berichten*, 54(11): 201-211.
- Horn, G.H. 1875. Notes on the species of *Ripiphorus* of the United States. *Transactions of the American Entomological Society*, 5: 121-125.
- Hunt, J.H. 1999. Trait mapping and salience in the evolution of eusocial Vespid wasps. *Evolution*, 53(1): 225-237.
- Jarvis, E. 1922. Early stages of *Macrosiagon cucullata* MacL. *Queensland Agricultural Journal*, 17: 307.
- Lawrence, J.F.; Falin, Z.H. & Ślipiński, A. 2010. 11.8 Ripiphoridae Gemminger and Harold, 1870 (Gerstaecker, 1855). In: Leschen, R.A.B.; Beutel, R.G. & Lawrence, J.F. (Eds.). *Coleoptera, Beetles. Vol. 2: Morphology and systematics (Elateroidea, Bostrichiformia, Cucujiformia partim)*. Berlin, Walter de Gruyter. p. 538-548. (Handbook of Zoology, Arthropoda: Insecta).
- LeConte, J.L. 1858. Catalogue of Coleoptera of the region adjacent to the boundary line between the United States and Mexico. *Journal of the Academy of Natural Science of Philadelphia*, 4(2): 9-42.
- Linsley, E.G. & MacSwain, J.W. 1951. The Rhipiphoridae of California (Coleoptera). *Bulletin of the California Insect Survey*, 1(3): 79-88.
- Linsley, E.G.; MacSwain, J.W. & Smith, R.F. 1952. The life history and development of *Rhipiphorus smithi* with notes on their phylogenetic significance (Coleoptera, Rhipiphoridae). *University of California Publications in Entomology*, 9(4): 291-314.
- López-Colón, J.I. 1997. Revisión taxonómica y distribución de *Macrosiagon pallidipennis* Reitter, 1898 (Coleoptera: Rhipiphoridae). *Zapateri Revista Aragonesa de Entomología*, 7: 245-250.
- Luo, Y.; Wang, L.; Green, L.; Song, K.; Wang, L. & Smith, R. 2015. Advances of drag-reducing surface technologies in turbulence based on boundary layer control. *Journal of Hydrodynamics*, 27(4): 473-487. DOI
- Majka, C.G.; Chandler, D.S.; Sheffield, C.S. & Webster, R.P. 2006. New records of Ripiphoridae (Coleoptera) from the Maritime provinces of Canada. *The Coleopterists Bulletin*, 60(4): 299-303. DOI
- Manfrini de Brewer, M. 1966. Subfamilia Ripiphorinae (Col. Ripiphoridae) revisión de las especies Argentinas del genero *Macrosiagon* Hentz. *Revista de la Facultad de Ciencias Exactas, Físicas y Naturales*, 27: 5-53.
- Matthews, R.W. & González, J.M. 2004. Nesting biology of *Zeta argillaceum* (Hymenoptera: Vespidae: Eumeninae) in Southern Florida, U.S. *Florida Entomologist*, 87(1): 37-40.
- Nowell, W. 1915. Two scoliid parasites on scarabaeid larvae in Barbados. *Annals of Applied Biology*, 2(1): 46-57.
- Pinto, J.D. 2003. Hypermetamorphosis. In: Resh, V.H. & Cardé, R.T. (Eds.). *Encyclopedia of Insects*. New York, Academic Press. p. 546-549.
- Pohl, H. 2002. Phylogeny of the Strepsiptera based on morphological data of the first instar larvae. *Zoologica Scripta*, 31: 123-134.
- Pohl, H. & Beutel, R.G. 2004. Fine structure of adhesive devices of Strepsiptera (Insecta). *Arthropod Structure & Development*, 33: 31-43.
- Pohl, H. & R.G. Beutel. 2008. The evolution of Strepsiptera (Hexapoda). *Zoology, Jena*, 111(4): 318-338.
- Poole, R.W. & Gentili, P. 1996. *Nomina Insecta Nearctica: a check list of the insects of North America. Volume 1: Coleoptera, Strepsiptera*. Rockville, Entomological Information Services. 827p.
- Razzak, M.A. 2018. Drag reduction using microcavity on flat surface. In: Offshore Technology Conference. *Proceedings*. Kuala Lumpur, Malasia, 2018. 6p. (OTC – 28482 – MS).
- Riley, C.V. 1874. The unadorned *Tiphia*, or white grub parasite – *Tiphia iivniata* Say. *Annual report Institut of Missouri*, 6<sup>o</sup>. p. 123-126.
- Rivnay, E. 1929. Revision of the Rhipiphoridae of North and Central America (Coleoptera). *Memoirs of the American Entomological Society*, 6: 1-68.

- Robertson, C. 1924. Flowers and Insects XXIII. *Botanical Gazette*, 78(1): 68-84.
- Roubaud, E. 1910. Recherches sur la Biologie des *Synagris*. Évolution de l'instinct chez les Guêpes Solitaires. *Annales de la Société Entomologique de France*, 79: 1-21.
- Rozen, J.G. 1997. New taxa of brachynomadine bees (Apidae: Nomadinae). *American Museum Novitates*, 3200: 1-26.
- Sánchez Rodríguez, J.L. 2001. Contribución al conocimiento de los Rhipiphoridae (Coleoptera) en Andalucía. *Boletín de la Sociedad Andaluza de Entomología*, 2: 29-32.
- Sano, P.T. 2001. *Actinocephalus* (Körn.) Sano (*Paepalanthus* sect. *Actinocephalus*), a new genus of Eriocaulaceae, and other taxonomic and nomenclatural changes involving *Paepalanthus* Mart. *Taxon*, 53(1): 99-107.
- Scherer, K.Z. & Castellani, T.T. 2004. Ecologia populacional de *Paepalanthus polyanthus* (Bong.) Kunth: variação temporal da distribuição espacial. *Biotemas*, 17(2): 27-45.
- Selander, R.B. 1991a. Rhipiphoridae (Tenebrionoidea). In: Stehr, F.W. (Ed.). *Immature Insects*. Iowa, Kendall/Hunt Publ.Co. v. 2, p. 509-512.
- Selander, R.B. 1991b. Meloidae (Tenebrionoidea). In: Stehr, F.W. (Ed.). *Immature Insects*. Iowa, Kendall/Hunt Publ.Co. v. 2, p. 530-535.
- Silvestri, F. 1906. Descrizione di un nuovo genere di Rhipiphoridae. *Redia Giornale di Entomologia*, 3: 315-324 + pl. XX.
- Smith, T.J.R. 1971. Field notes on the occurrence of *Hemithynnus hyalinatus* (Hymenoptera: Tiphidae) as a parasite of Scarabaeids on the New England Tablelands. *Journal of the Australian Entomological Society*, 10: 265-270.
- Snelling, R.R. 1963: A host of *Macrosiagon* [sic!] *cruentum* (Genmar) [sic!] in Georgia. *Pan-Pacific Entomologist*, 39: 87-88.
- Švácha, P. 1994. Bionomics, behaviour and immature stages of *Pelecotoma fennica* (Paykull) (Coleoptera: Rhipiphoridae). *Journal of Natural History*, 28(3): 585-618.
- Tomlin, A.D. & J.J. Miller. 1989. Physical and Behavioral Factors Governing the Pattern and Distribution of Rhipiphoridae (Coleoptera) Attached to Wings of Halictidae. *Annals of the Entomological Society of America*, 82(6): 785-791.
- Vaurie, P. 1955. A review of the genus *Macrosiagon* in Mexico, with notes on *Rhipiphorus* (Coleoptera, Rhipiphoridae). *American Museum Novitates*, 1717: 1-19.
- Verdugo, A. 2010. Segundo registro de *Macrosiagon ferruginea* (Fabricius, 1775) para la provincia de Cádiz (España) (Coleoptera, Rhipiphoridae). *Revista Gaditana de Entomología*, 1(1): 24-26.
- Yamane, S. 1990. A revision of the Japanese Eumenidae (Hymenoptera, Vespoidea). *Insecta Matsumurana*, 43: 1-189.