

Monetary Policy and Inflation in Brazil (1975-2000): A VAR Estimation*

André Minella**

Summary: 1. Introduction; 2. Methodology; 3. Results; 4. Conclusions.

Keywords: monetary policy; inflation; interest rate; money; Brazil.

JEL codes: E31; E52.

This paper investigates monetary policy and basic macroeconomic relationships involving output, inflation rate, interest rate, and money in Brazil. Based on a vector autoregressive (VAR) estimation, it compares three different periods: moderately-increasing inflation (1975–1985), high inflation (1985–1994), and low inflation (1994–2000). The main results are the following: monetary policy shocks have significant effects on output; monetary policy shocks do not induce a reduction in the inflation rate in the first two periods, but there are indications that they have gained power to affect prices after the Real Plan was launched; monetary policy does not usually respond rapidly or actively to inflation-rate and output innovations; in the recent period, the interest rate responds intensely to financial crises; positive interest-rate shocks are accompanied by a decline in money in all the three periods; the degree of inflation persistence is substantially lower in the recent period.

Este artigo examina a política monetária e relações macroeconômicas básicas envolvendo produto, inflação, taxa de juros e moeda no Brasil. Baseando-se em uma estimativa de um vetor autorregressivo (VAR), comparam-se três períodos: inflação moderadamente crescente (1975–1985), alta inflação (1985–1994) e baixa inflação (1994–2000). Os principais resultados são os seguintes: choques na política monetária têm efeitos significativos no produto; choques na política monetária não induzem uma redução na taxa de inflação nos dois primeiros períodos, mas há indicações de que eles

*This paper was received in Dec. 2001 and approved in Aug. 2002. I am grateful to Mark Gertler, Ali Hakan Kara, Kenneth Kuttner and two anonymous referees for their helpful comments and suggestions. All remaining errors are my responsibility. Financial support from the Central Bank of Brazil and CAPES is gratefully acknowledged. The views expressed are those of the author and not necessarily those of the Central Bank of Brazil or its members. E-mail: andre.minella@bcb.gov.br.

**Research Department, Central Bank of Brazil.

aumentaram seu poder de afetar preços depois que o Plano Real foi implementado; a política monetária geralmente não responde ativa ou rapidamente frente a choques na taxa de inflação e no produto; no período recente, a taxa de juros responde intensamente a crises financeiras; choques positivos na taxa de juros são acompanhados por um declínio na quantidade de moeda em todos os três períodos; o grau de persistência inflacionária é significativamente menor no período recente.

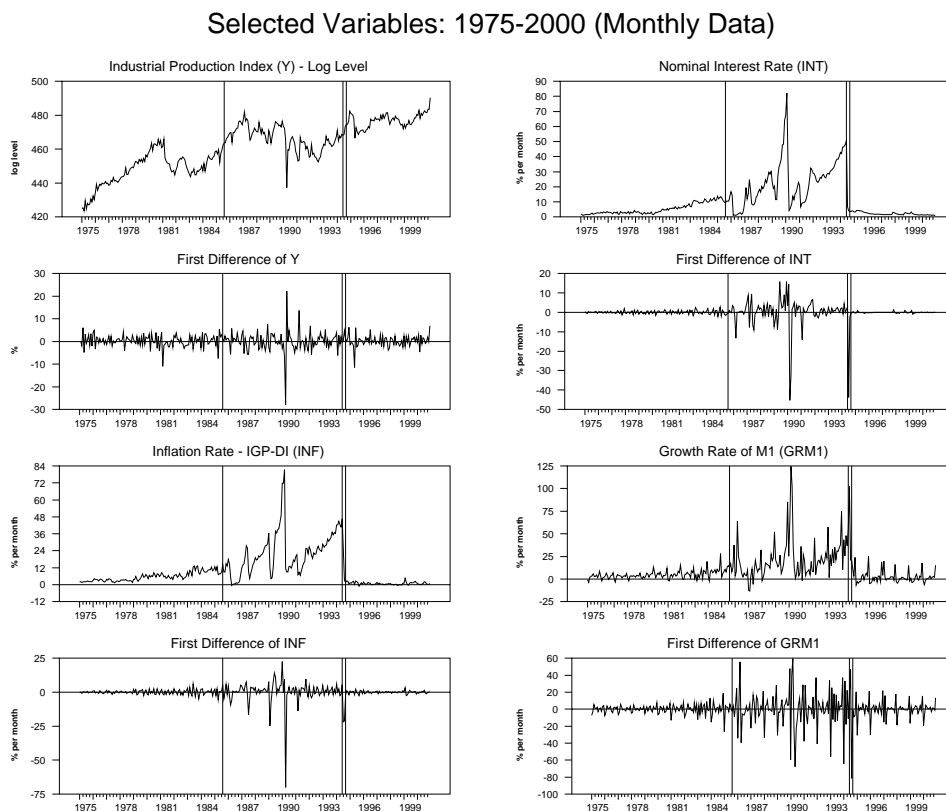
1. Introduction

This paper investigates monetary policy and basic macroeconomic relationships involving output, inflation rate, interest rate, and money in Brazil. Based on a vector autoregressive (VAR) estimation, the paper addresses the following questions: do monetary policy shocks have real effects?; do monetary policy shocks affect inflation rate?; what is the reaction of monetary policy to inflation-rate, output, and financial shocks?; is inflation rate persistent?; what is the relation between money and interest rate?

Furthermore, the objective is to compare these relationships across different periods. Because of the limited availability of data, the sample estimation goes from 1975 to 2000. The inflation rate, measured as percentage variation per month, and its first difference are presented in figure 1. Based on the behavior of the inflation rate and stabilization policies, the macroeconomic context in Brazil can be divided into three periods:

- Moderately-increasing inflation (1975–1985). Inflation rate was increasing, but at a slower rate than the prevailing in the following nine years. There was no stabilization program that produced an abrupt reduction in the inflation rate;
- High inflation (1985–1994). Inflation rate grew at a fast rate. There were five stabilization programs, usually involving price freeze without previous announcement. Their success were just momentary: the inflation rate fell abruptly, but sooner or later it increased again;
- Low inflation (1994–). The Real Plan, launched in July 1994, has achieved a substantial and lasting reduction in the inflation rate.

Figure 1



In particular, the change from a high to a low-inflation environment is expected to be accompanied by an increase in the effectiveness of monetary policy. One reason is the reduction in the degree of inflation persistence in the recent period, which is verified by the estimation in this paper.¹

For the OECD countries, the literature that investigates monetary policy and macroeconomic relationships using a VAR estimation is vast.² For Brazil, in contrast, only more recently the VAR approach has been employed. For the periods

¹Other factors that would increase the effectiveness of monetary policy are stressed by Lopes (1997): a lower inflation-rate volatility premium, an expected longer maturity of assets that would raise the wealth effect of an increase in the interest rate, the expansion in credit that has accompanied the stabilization, and the adoption of a floating exchange-rate regime expanding the exchange-rate channel.

²See, for example, Christiano et al. (1996, 1999), Bernanke et al. (1997), Bernanke and Mihov (1998b,a), Sims (1992), Blanchard (1989), Friedman and Kuttner (1992), Friedman (1996), Galí (1992), and Kim (1999).

before the recent stabilization program, Pastore (1995, 1997) has found passiveness of money supply to the inflation rate, and high degree of inflation persistence.³ In terms of comparison across periods, Fiorencio and Moreira (1999) have concluded that, during 1982–1994, monetary policy did not practically affect unemployment and price level, whereas, for 1994–1998, positive interest-rate shocks increased unemployment and decreased price level. For 1995–2000, Rabanal and Schwartz (2001) have found a negative response of output and money to interest-rate shocks. Nevertheless, I consider that it is necessary an investigation that covers a large span, addresses all the questions previously mentioned, and compares results across the three different periods.

In spite of the instability of the Brazilian economy, several important results emerge from the estimations in this paper. First, monetary policy shocks have important real effects on the economy. Positive shocks to the interest rate lead to a decline in output in all the three periods analyzed. The effect seems to be more pronounced after the Real Plan was launched. Second, despite the real effects, monetary policy shocks do not generate a reduction in the inflation rate during the first two periods. For the Real Plan period, however, there is some evidence that monetary policy has gained power to curb inflation, although the results are not conclusive. Third, regarding the reaction of monetary policy, the interest rate does not respond actively or at least rapidly to inflation-rate innovations: the response of the nominal interest rate, in the first two months, is smaller than the rise in the inflation rate in all the three periods analyzed. Similarly, the interest rate does not react to stabilize output. In the Real Plan period, monetary policy responds strongly to financial crises. Fourth, the degree of inflation persistence has clearly decreased in the recent period. Fifth, a positive interest-rate innovation is accompanied by a decline in money in all the periods. In fact, there is some evidence of a negative correlation between money supply and interest rate. Furthermore, inflation-rate innovations induce a decline in the real money levels. The results are also consistent with the fact that the Central Bank targets the interest rate instead of M1.

Section 2 deals with the methodology used for the estimation, and section 3 presents the results. A final section concludes the paper.

2. Methodology

The paper considers the following dynamic model:

³He has estimated an error correction model for 1944–1985 that included only the inflation rate and a monetary aggregate. His Granger causality tests have also involved 1986–1994.

$$A_o Z_t = k + \sum_{i=1}^p A_i Z_{t-i} + u_t \quad (1)$$

where:

Z_t is the (n x 1) vector of variables;

A_o and A_i are (n x n) matrices of coefficients;

k is a vector of constants;

p is the number of lags, and

u_t is a vector of uncorrelated white noise disturbances ($E(u_t u_t')$ is assumed to be a diagonal matrix). Premultiplying by A_o^{-1} , we obtain the reduced form for the VAR:

$$Z_t = c + \sum_{i=1}^p B_i Z_{t-i} + \varepsilon_t \quad (2)$$

where:

$c = A_o^{-1} k$;

$B_i = A_o^{-1} A_i$ (for $i = 1, 2, \dots, p$), and

$\varepsilon_t = A_o^{-1} u_t$ is white noise with variance-covariance matrix $\Phi = A_o^{-1} E(u_t u_t') (A_o^{-1})'$.⁴

The estimated VAR (equation 2) includes basically four variables: output (Y), measured by the index of industrial production produced by IBGE (seasonally adjusted); inflation rate (INF) or price level (P) measured by IGP-DI,⁵ nominal interest rate (INT), given by the Selic overnight interest rate (interest rate in overnight operations between banks involving government debt as collateral – analogous to the fed funds rate); and the monetary aggregate M1. The estimation uses monthly data.⁶ Figure 1 shows these variables and their first differences for 1975-2000.

⁴Hamilton (1994).

⁵IGP-DI is produced by FGV, and is a weighted average of indexes of wholesale prices, consumer prices, and construction costs.

⁶The values for the interest rate and monetary aggregate employed are the average during the month. For M1, between 1975:01 and 1979:12, we have only data corresponding to the balance at the end of month. In this case, I have estimated the value for month t using the arithmetic average of the balances between the end of months $t - 1$ and t . The data source for the interest rate between 1986:07 and 2000:12 and M1 is the Central Bank of Brazil, and for the interest rate from 1975:01 to 1986:06 is Andima.

The questions are investigated using orthogonalized impulse-response functions, which describe the response of a variable to a one-time shock to one of the elements of u_t . This paper uses a Cholesky decomposition to identify the orthogonalized disturbances u_t . This recursive structure means, for example, that, *contemporaneously*, the first variable in the ordering is not affected by shocks to the other variables, but shocks to the first variable affect the other ones; the second variable affects the third and fourth ones, but it is not affected contemporaneously by them, and so on. I have assumed the following ordering: output, inflation rate, nominal interest rate, and M1 (“benchmark ordering”). Decisions of production level tend to respond with some delay. Thus, using monthly data, it seems reasonable to assume that output does not respond contemporaneously to other shocks. The inflation rate is assumed to respond contemporaneously to output innovations, but not to interest-rate and M1 shocks. Since the interest rate is adjusted basically on a daily basis, it can react very quickly to output and inflation-rate shocks. Because of the presence of delays in the availability of output and inflation-rate data, I have assumed that there are some current indicators for these variables. Finally, shocks to output, inflation rate and interest rate are assumed to be transmitted rapidly to the monetary aggregate.

Because of the important differences in the dynamics of the inflation rate and the other two nominal variables across the three mentioned periods, the paper estimates separate VARs for each period. The subsamples are the following: 1975:01 – 1985:07 (first subsample), 1985:08 – 1994:06 (second subsample), 1994:09 – 2000:12 (third subsample). The vertical lines in figure 1 divide the periods accordingly.

The series of the inflation rate and other nominal variables present important breaks immediately after the launch of six stabilization programs. The estimation for the second subsample includes two impulse dummies for each program (except for the first program, for which was used one dummy). These dummies assume the value of one for the selected month, and zero otherwise.⁷ Because of the fast acceleration of the inflation rate before the Collor Plan, launched in March 1990, I have added a dummy variable that takes the value of one in the three months previous to that plan. The estimation also includes centered seasonal dummies for all variables. Thus, the estimated model corresponds to equation (2), but with the addition of all these dummy variables.

As a result of the breaks, usual critical values for the cointegration tests cannot be used. Johansen et al. (2000) have addressed the cointegration test in the presence of breaks. Nevertheless, since there is a great number of breaks in the

⁷The months with dummy variables are 1986:03, 1987:06, 1987:07, 1989:01, 1989:02, 1990:03, 1990:04, 1991:02, and 1991:03.

Brazilian series (at least five in the second subsample), and most of them are relatively close to each other, I have estimated the model using $I(1)$ – integrated of order one – regressors instead of employing the error correction representation. The estimation is consistent and captures possible existing cointegration relationships (Sims et al., 1990, Watson, 1994). The main drawbacks are that usual Granger causality tests are not valid, and tests for structural breaks are also affected.

It is a highly difficult task to determine the order of integration of the variables because the breaks affect the unit root tests. Cati et al. (1999) have constructed a test for series with this kind of break with an application to the inflation rate in Brazil for 1974:01 to 1993:06. They have found mixed results, but have concluded that we cannot reject the unit root hypothesis. They have also mentioned that found similar results for the nominal interest rate.

I have followed Cati, Garcia, and Perron's results. For the second subsample, which presents several breaks, I have treated the inflation rate and nominal interest rate as $I(1)$. Since the dynamics of the nominal variables are dominated by the inflation rate, I have also assumed that the growth rate of M1, denoted by GRM1, is $I(1)$.

I have conducted unit root tests for output for all subperiods, and for the nominal variables for the first and third periods, which present no break. I have used the Augmented Dickey-Fuller test, where the null hypothesis is that the variable is $I(1)$. The lag length was chosen using the Akaike Information Criterion (AIC). The results are shown in table A.1 in the Appendix. For the output, we reject the null of presence of a unit root for the whole sample (1975:01 – 2000:12) and second subsample, and we accept it for the first and third subsamples. I have treated output as $I(1)$ in all estimations. For the nominal interest rate, we can accept the null of unit root for the first and third subsamples. I have also used the multiple unit root test, procedure based on Dickey and Pantula (1987) to deal with cases where a higher than one order of differencing is necessary. In this case, the null hypothesis is that the variable is $I(2)$. In the first period, using the multiple unit root test, we can accept that the price log-level is $I(2)$. Therefore, we can accept that the inflation rate is $I(1)$. For the third subsample, the results are clear: using the Augmented Dickey-Fuller test, we reject the null of $I(1)$ for the inflation rate and accept it for the price log-level, and, using the multiple unit root test, we reject the null of $I(2)$ for the price log-level.⁸ As a consequence,

⁸Concerning the difference of results between nominal interest rate and inflation rate for the third period, we note, using the impulse-response functions presented in section 3, that the persistence of the interest rate to its own shock is considerably higher than the persistence of the

the main specification for the third subsample uses price log-level as variable. In order to compare results, I have also estimated using the inflation rate. The tests for the growth rate of M1 in the first period are not conclusive. Nonetheless, it seems reasonable to consider the M1 growth rate and the inflation rate as having the same order of integration, possibly being cointegrated.⁹ Thus, I have treated the growth rate of M1 as $I(1)$. For the third subsample, we can accept the null that the M1 log-level is $I(1)$, and, using the multiple unit root test, we reject the null hypothesis that M1 log-level is $I(2)$. Consequently, I have used M1 log-level as variable in the third subsample, besides estimating using M1 growth rate to compare results.

Therefore, most of the estimations are conducted using as variables: log-level of the index of industrial production, inflation rate, level of nominal interest rate, and M1 growth rate (“growth-rate specification”). The third subsample is also estimated employing the “level specification”: price and M1 log-levels instead of the inflation rate and M1 growth rate.¹⁰

The lag length for the VAR estimation was selected using AIC, but the residuals were also tested for autocorrelation and autoregressive conditional heteroskedasticity (ARCH). Sometimes, it was necessary to add one or two lags to obtain better residuals.¹¹

Table 1 presents the residual analysis of the benchmark estimations and the respective selected lag lengths.¹² Autocorrelation – LM(1) and LM(4) refer to the lagrange multiplier test for the first and fourth order autocorrelation of the residuals, respectively. The null hypothesis is that the residuals do not present serial correlation of first or fourth order. ARCH refers to a lagrange multiplier test for autoregressive conditional heteroskedasticity of order equal to the number of lags in the model. The null hypothesis is absence of autoregressive conditional heteroskedasticity. The following line refers to a test where the null hypothesis is

inflation rate to its own shock.

⁹Pastore (1994/1995) has found that money growth and inflation rate are cointegrated for 1944 – 1985.

¹⁰I show the results using the inflation rate and the growth rate of M1 estimated directly as $(x_t - x_{t-1})/x_{t-1}$, where x_t is the price or the M1 level. Qualitatively, the results are very similar to those using log-differences. In the case of the level specification for the third subsample, I have used $\log(1 + i)$ for the nominal interest rate, where i is the interest rate in fractional units.

¹¹I have also estimated all the three subsamples using four lags – the maximum lag length used across the subsamples – to verify if the results are dependent on the difference of lag length. The main results remain unchanged.

¹²All the tests were estimated using CATS program (except for the Lagrange multiplier test for autocorrelation of residuals in the case of single equations). For more details, see Hansen and Juselius (1995). The regressions were estimated using RATS program.

normality of residuals. All the values shown are p-values. In general, the results are poor in terms of normality, but satisfactory for autocorrelation and conditional heteroskedasticity.¹³ The estimates of the regressions are presented in table A.2 in the Appendix.

Table 1
Test for autocorrelation, ARCH, and normality of residuals (p-values)

First Subsample (3 lags)					
Test	System	Y	INF	INT	GRM1
Autocorrelation - LM(1)	0.42	0.07	0.35	0.63	0.46
Autocorrelation - LM(4)	0.13	0.19	0.07	0.28	0.60
ARCH		0.15	0.34	0.16	0.90
Normality	0.00	0.52	0.00	0.04	0.00
Second Subsample (4 lags)					
Test	System	Y	INF	INT	GRM1
Autocorrelation - LM(1)	0.10	0.79	0.54	0.33	0.05
Autocorrelation - LM(4)	0.54	0.90	0.19	0.39	0.11
ARCH		0.98	0.81	0.59	0.56
Normality	0.00	0.03	0.00	0.00	0.00
Third Subsample - growth-rate specification (1 lag)					
Test	System	Y	INF	INT	GRM1
Autocorrelation - LM(1)	0.15	0.02	0.13	0.40	0.27
Autocorrelation - LM(4)	0.07	0.01	0.30	0.60	0.48
ARCH		0.21	0.53	0.86	0.35
Normality	0.00	0.00	0.00	0.00	0.00
Third Subsample - level specification (3 lags)					
Test	System	Y	INF	INT	GRM1
Autocorrelation - LM(1)	0.65	0.01	0.30	0.33	0.20
Autocorrelation - LM(4)	0.98	0.01	0.62	0.27	0.42
ARCH		0.92	0.89	0.95	0.84
Normality	0.00	0.00	0.00	0.00	0.00

Notes: The null hypothesis are the following: absence of serial correlation of first and fourth orders (Autocorrelation - LM(1) and (4)); absence of autoregressive conditional heteroskedasticity (ARCH), and normal distribution of residuals.

¹³In the first period, a dummy variable for 1981:03 was included, eliminating a problem of conditional heteroskedasticity for the output regression. The residuals of the output regression in the third period, however, present some autocorrelation. For an estimation considering the whole sample (not shown), the presence of autoregressive conditional heteroskedasticity in the residuals is evident, mainly for the inflation rate and interest rate.

The impulse-response functions and their two-standard-error bands were estimated using a Monte Carlo experiment based on Doan (2000, p. 398). The values are expressed as percentage (output, price level, M1 level) or percentage points (inflation rate, interest rate, M1 growth rate) deviations from a no-shock case, all measured as percentage per month. The value of the shock is one standard deviation of the residual of the variable unless explicitly noted otherwise.

I have conducted several exercises of robustness. For the second and third subsamples, I have also estimated using a different price index, IPCA (available since 1980), which is a consumer price index produced by IBGE that has been recently used in the inflation targeting regime (adopted since July 1999). For the second subsample, the results are qualitatively the same as those with IGP-DI, whereas for the third subsample there are some differences, which are discussed along the text. When the index used is not mentioned, the estimation employs IGP-DI.

In addition, since in the recent period the interest-rate responded to the financial external crises (Mexico, Asia, Russia) and to the exchange-rate crisis in Brasil at the beginning of 1999, I have also estimated, for the third subsample, a five-variable model that includes the spread of the Emerging Markets Bond Index (EMBI) relative to U.S. treasuries (estimated by J. P. Morgan). The EMBI spread is considered a good indicator for these crises because it increased significantly during these episodes. The estimation uses the level of EMBI spread, which appears before the nominal interest rate and money in the ordering. We accept the null hypothesis of presence of a unit root for EMBI spread (table A.1).

I have considered different orderings for the Cholesky decomposition. To better assess the relationships involving money, I have also estimated using M1 before interest rate (“alternative ordering”). The results are explained in section 3.6. The robustness of the results is also tested using other two orderings. In the first, the interest rate does not react contemporaneously to shocks to the other variables, possibly because of the presence of lags in the availability of data or in the monetary policy decisions. The ordering is nominal interest rate, output, inflation rate (or price level) and M1 growth rate (or M1 level). In this case, the inflation rate is reacting contemporaneously to interest-rate shocks, possibly reflecting the high frequency of price adjustments in the Brazilian economy, specially before the Real Plan. The second ordering is inflation rate (or price level), nominal interest

rate, output, and M1 growth rate (or M1 level). In this case, the interest rate reacts contemporaneously to inflation-rate shocks, but not to output shocks. The conclusions of the paper do not change with these two orderings.¹⁴ A three-variable VAR that excluded money was estimated as well. The results (not related to money) are also unchanged.

The benchmark model does not include exchange rate among the variables. The reasons are the following. First, the paper does not involve the assessment of the exchange rate. Second, Brazil had several exchange rate regimes and maxidevaluations. The model estimation would have to take into consideration these changes, perhaps implying different identification structures across regimes. Third, if we include the exchange rate, it would be more interesting to add exports and imports to the model as well. In this case, however, the model becomes very large and should be used to address other questions (effect of devaluations on trade balance, etc.). Still, for robustness purposes, I have conducted some estimations including the exchange rate. One consequence is that residuals become less well behaved. In particular, I have compared the results for the Real Plan using a five-variable model with the ordering output, inflation rate (or price level), growth rate of nominal exchange rate (or exchange rate level), nominal interest rate, and the growth rate of M1 (or M1 level). The impulse-response functions using IPCA are very similar to those obtained with the four-variable model. In the case of IGP-DI, the main differences are noted in the respective sections.

3. Results

The impulse-response functions (solid lines) and their two-standard-error bands (dashed lines) for the benchmark ordering with IGP-DI as the price index are shown in figures 2 to 5.¹⁵ Each column represents the responses of the different variables to a specific shock. Figures 2 to 4 refer to the three subsamples using the growth-rate specification. Figure 5 refers to the third subsample employing the level specification (price and M1 levels). Besides the path of the estimated variables, the figures also show some nominal variables in real terms, such as the real interest rate, real money growth, and real money level, which are estimated using the respective values of the current inflation rate. In each figure, the graphs in a given row have the same scale.

¹⁴The results are not shown, but are available upon request. The main difference refers to the contemporaneous reaction of some variables because of the ordering used.

¹⁵Figures with the impulse-response functions when the estimation employs IPCA are available upon request.

Figure 2

First Subsample: 1975:01 - 1985:07

Shock to

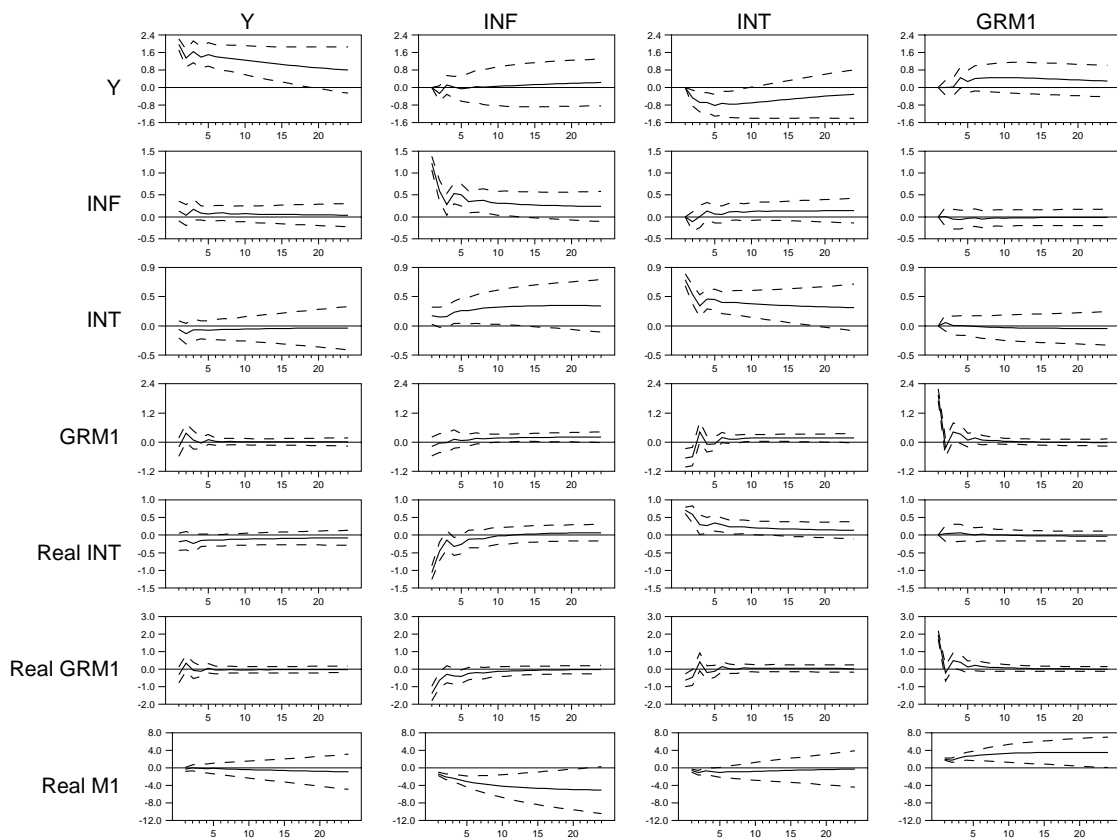


Figure 3

Second Subsample: 1985:08 - 1994:06

Shock to

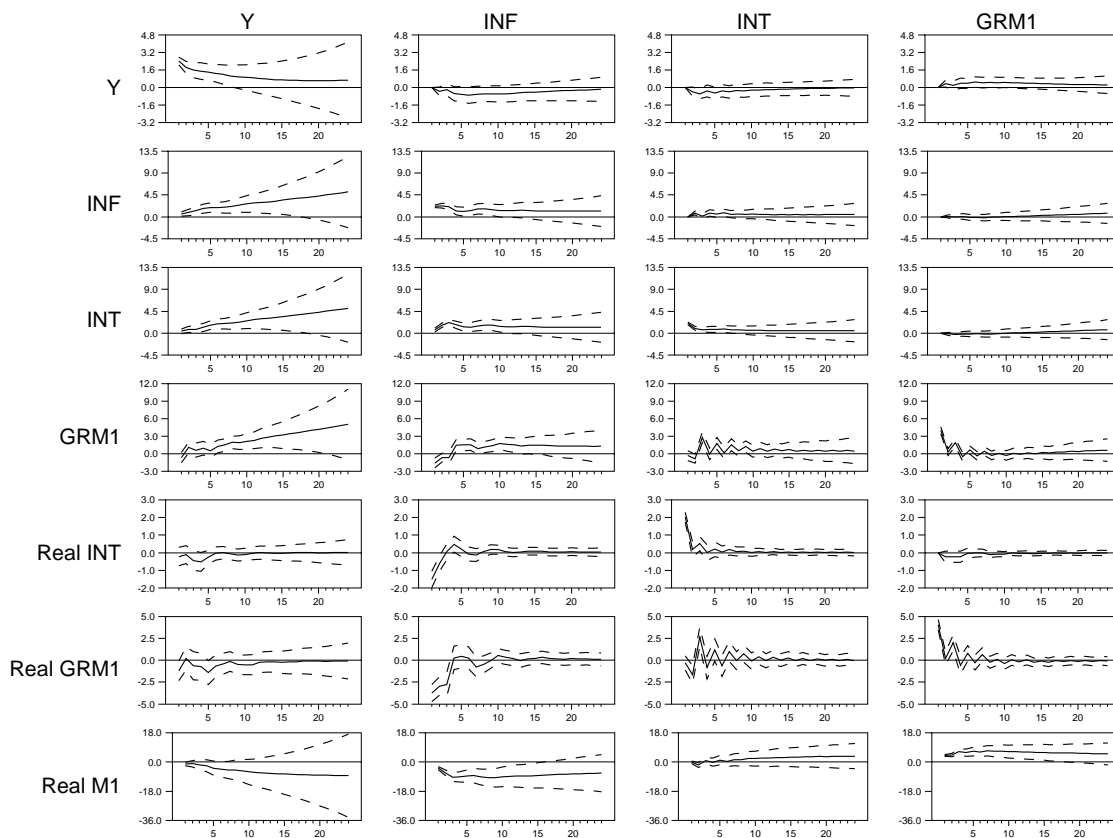


Figure 4

Third Subsample: 1994:09 - 2000:12 - Growth-Rate Spec.

Shock to

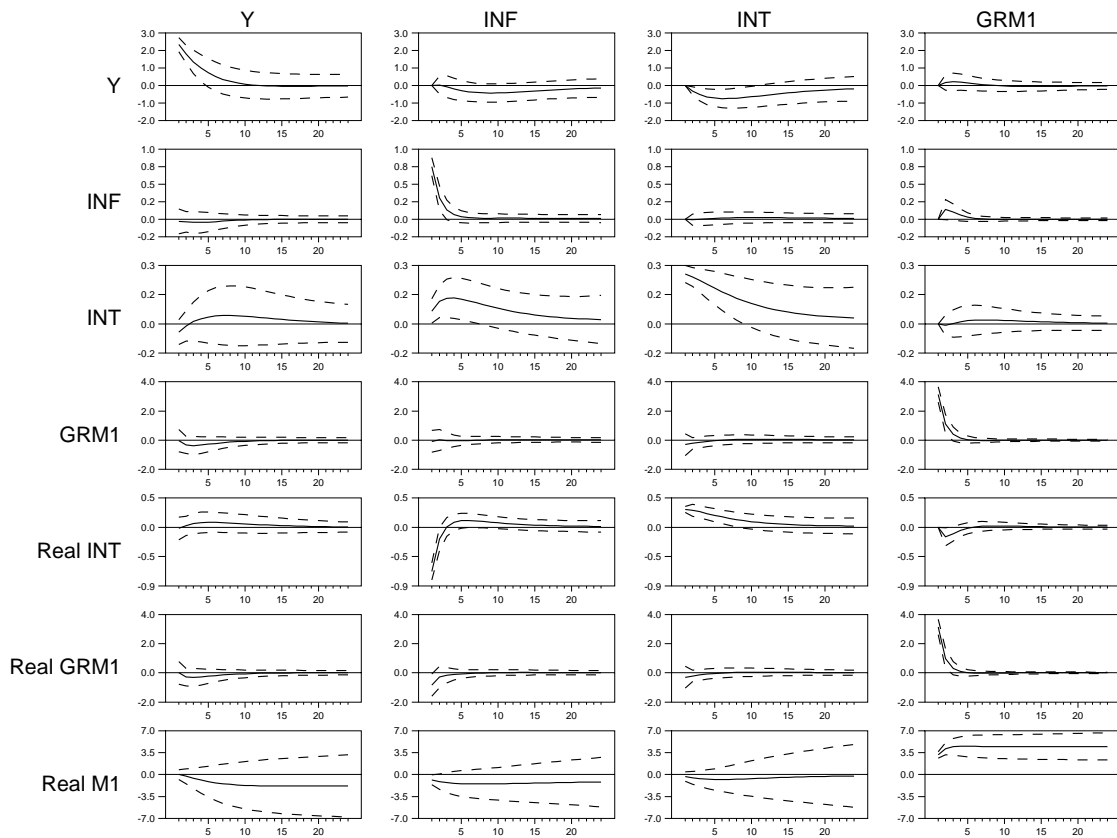
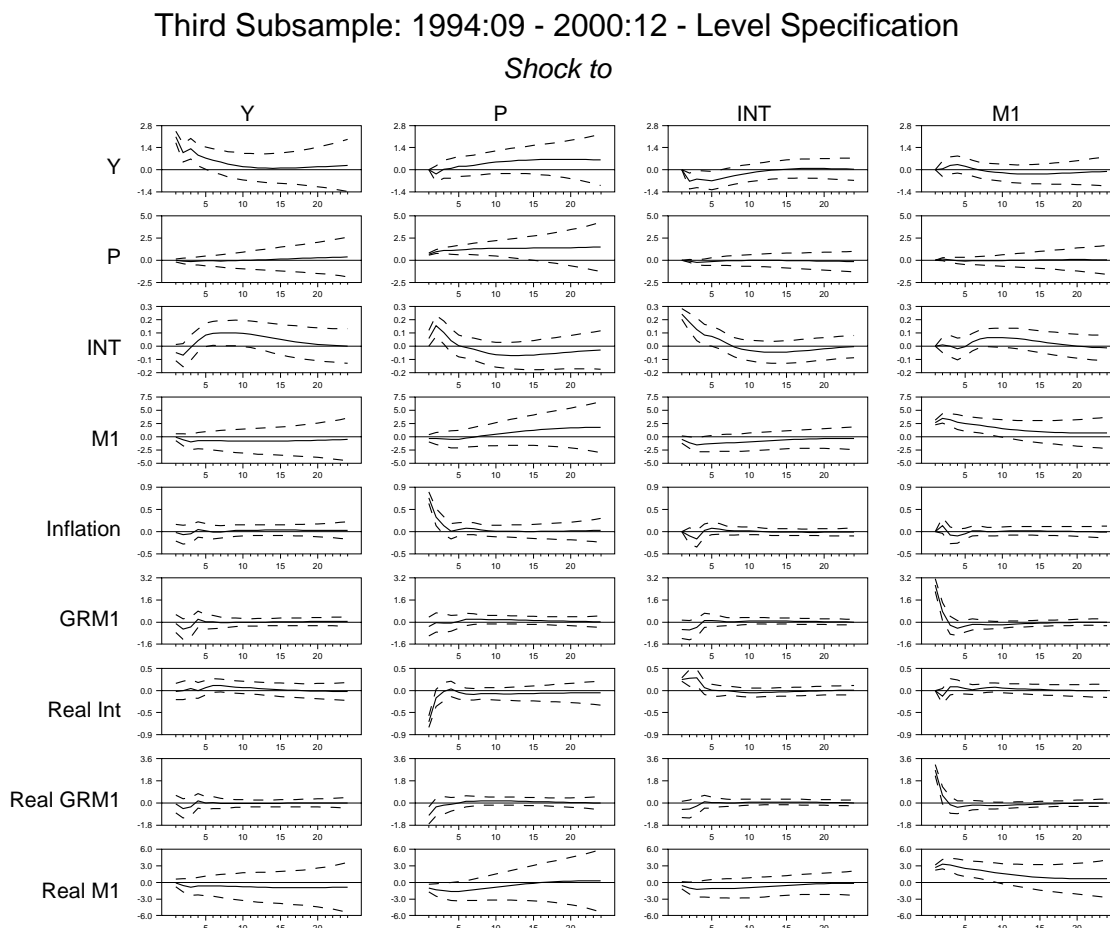


Figure 5



3.1 Inflation persistence

I assess the degree of inflation persistence using the response of the inflation rate to its own shock. There exists a pronounced difference across the subsamples, mainly in the last period in comparison with the first two ones. During the Real Plan period, using either the level or the growth-rate specification, the response of the inflation rate does not persist more than over four months (a little longer using IPCA). In contrast, inflation rate is statistically significant above zero over about 14 months in the moderately-increasing- and high-inflation periods. After 24 months, the inflation rate is still 19.4% of the shock in the first subsample, and

54.2% in the second one, whereas it is only 1.4% in the third subsample using the growth-rate specification (and 4.2% with the level specification). Therefore, the recent stabilization has been accompanied by a significant reduction in the degree of inflation persistence. One of the causes is the substantial decline in the use of indexation in the economy.

If we consider only the coefficients on the lagged inflation terms, which give the direct effect of past inflation in the current inflation, the third subsample presents a lower effect of past inflation. The sum of the coefficients on the lagged inflation terms are 0.81, 0.69, and 0.41 for the first, second, and third subsamples, respectively (table A.2).¹⁶

3.2 Real effects of monetary policy shocks

Perhaps the most robust result across subsamples and different estimation specifications is that a positive shock to interest rate reduces output. The rise in the nominal interest rate is accompanied by an increase in the real interest rate. The response of output is fast and hump-shaped. In the second month (with the ordering assumed, output does not respond in the first month), output is negative, and the estimate is statistically significant. The maximum reduction is reached between three and seven months, depending on the estimation. Qualitatively, this result is in line with the findings in Freitas and Muinhos (2001) and Andrade and Divino (2000), based on an IS curve estimation.¹⁷ The response is faster than those estimated for the U.S. and other OECD economies, where the response is also hump-shaped, but the maximum reduction in the output usually occurs between one and two years.¹⁸ The speed of the response in the Brazilian case may be related to the predominance of short-term credit, where the average interest rate charged in the outstanding debts responds more rapidly to changes in the basic interest rate.

¹⁶Considering the same lag length for the three periods (four lags), the sums are 0.73, 0.69, and 0.41.

¹⁷Freitas and Muinhos (2001) have estimated an IS equation for 1992:4 – 1999:1 with quarterly data. Real interest rate with a lag of one quarter enters significantly in the output-gap (GDP) regression with a negative sign. Likewise, Andrade and Divino (2000) have estimated an IS equation, but with monthly data from 1994:08 to 1999:03. The coefficient on the six-month lag of the real interest rate is negative and statistically significant in the output-gap (estimated GDP) regression.

¹⁸Bernanke et al. (1997), Christiano et al. (1999), and Sims (1992).

Figure 6
 Responses of output to an interest-rate shock: comparison across subsamples

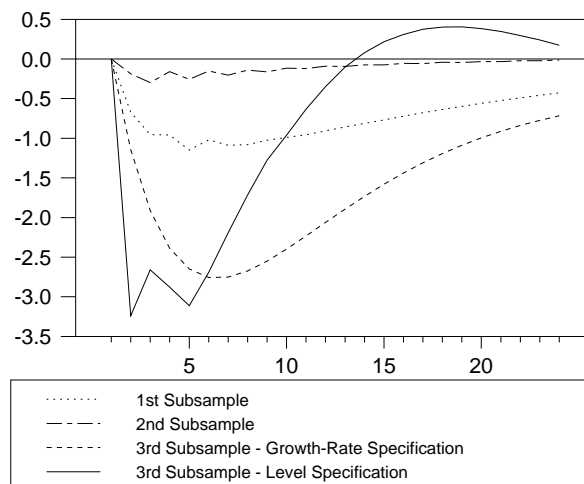


Figure 6 presents the response of output to a one-percentage-point innovation to interest rate, measured at a monthly rate. It shows the point estimates of the three subsamples (it includes both level and growth-rate specifications for the Real Plan period). The objective is to assess the effect of the same absolute value of the interest-rate shock. The response of output in the third subsample – in both specifications – is greater than those estimated for the other two periods. As shown in figures 2 to 5, the shocks to the nominal interest rate also represent increases in the real interest rate in all subsamples. Nevertheless, the magnitude of the rise in the real interest rate differs across subsamples. As of the second month, the real interest rate, in the third subsample, is greater than those in the other subsamples. In order to consider these differences, I calculate the ratio of the sum of output fall to the sum of the rise in the real interest rate (measured at an annual rate) for a period of 24 months. For the first and second subsamples, the values are -0.18 and -0.11 , respectively, whereas for the third subsample the values are -0.38 and -0.70 for the growth-rate and level specifications. Therefore, the point estimates indicate that monetary policy has increased its effectiveness in affecting the real side of economy with the Real Plan. Nevertheless, this result should be analyzed with caution because the third subsample is estimated less precisely (shorter sample). If we consider the error bands of the impulse-response functions, it is possible to show that the confidence intervals of the third subsample overlap with those of the first subsample for the whole horizon, whereas, for some months, they are outside the confidence intervals of the second subsample. Because of the

instability of the high-inflation period, however, we should be cautious with this finding.

In quantitative terms, during the Real Plan period, a one-percentage-point shock to interest rate – measured monthly – leads to a maximum decrease in the output of about 2.7% – 3.2%. Expressing interest rate in percentage per year, a one-percentage-point shock generates a maximum output reduction of approximately 0.25%.

3.3 Effects of monetary policy shocks on the price level and inflation rate

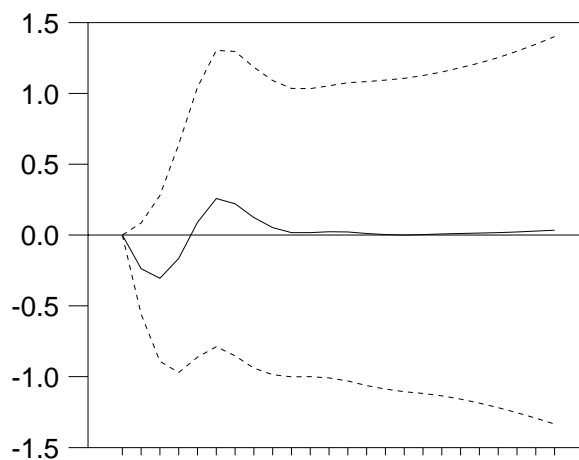
In spite of the similarities in terms of real effects, the effects of an interest-rate shock on price and inflation rate differ across periods. In the first subsample, there is no statistically significant effect on the inflation rate. In fact, the point estimates show some increase in the inflation rate. In the second subsample, there is an “inflation-rate puzzle”: a positive interest-rate innovation is followed by a rise in the inflation rate.¹⁹

During the high-inflation period, the inflation rate was increasing at a fast rate. Because the price index compares the average of prices during the current month to the average over the past month, when inflation rate is rapidly increasing, the index tends to underestimate the current inflation rate. Hence, part of the interest-rate innovation may reflect a response to an increasing inflation rate that does not appear integrally in the current price index. In this period, part of the agents, including the Central Bank, tended to use also a “centered” inflation rate to estimate the real interest rate. The centered inflation rate is calculated comparing the geometric average of the price index between months t and $t + 1$ to the average between t and $t - 1$. Since it compares the average at the end of month t to that at the end of month $t - 1$, it captures the acceleration of the inflation rate during the current month. Figure 7 shows the impulse-response function of the centered inflation rate to an interest-rate shock for the high-inflation period.

¹⁹For the U.S. and other OECD economies, some VAR estimations generate a “price puzzle”, where a positive interest-rate shock is followed by an increase in the price level. This phenomenon occurs because the interest rate also reacts to changes in the expected inflation rate that are not captured in the model estimation. Since at least part of the expected inflation is realized, we observe an increase in the price level following what is being regarded as a monetary policy shock. The inclusion of past and current commodity prices in the information set used to determine the interest rate, suggested by Sims (1992), solves this problem because these prices tend to be very sensitive to inflationary expectations.

The inflation-rate puzzle disappears.²⁰

Figure 7
Second subsample: response of the centered inflation rate to an interest-rate shock



Most importantly, we can conclude that, for the first and second subsamples, monetary policy shocks do not induce a reduction in the inflation rate.²¹ This is consistent with the idea that, in a context of high inflation, inflation rate tends to respond very poorly to monetary policy.

For the third subsample, the results with the benchmark model are not conclusive. Using the level specification (figure 5), a positive interest-rate shock is followed by a temporary decrease in the price level and inflation rate (inflation rate here is calculated as the log-difference of the price level response).²² Nevertheless, when using the growth-rate specification (figure 4), the inflation rate does not respond to the interest-rate shock.²³

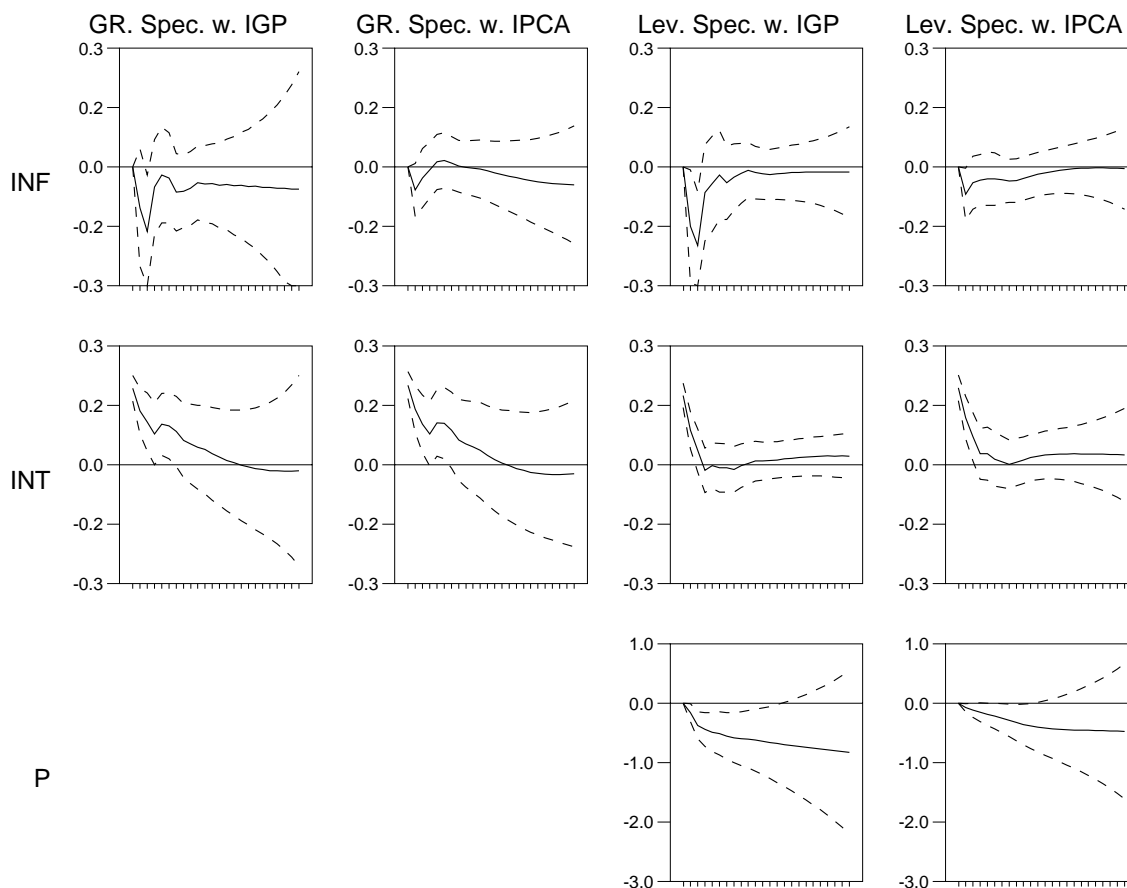
²⁰This result, however, has to be considered cautiously because the estimation has problems of consistency. The centered inflation rate at $t - 1$ is correlated with shocks at t . Besides, for the first subsample, using the centered inflation rate, the response of the inflation rate becomes significantly positive.

²¹With the specification for the second subsample using the centered inflation rate, the point estimates indicate a reduction in the inflation rate, but it is at most close to be significant, and lasts only one or two months.

²²Nonetheless, reducing the number of lags employed from three to two (not shown), the effect disappears.

²³In this specification, AIC has selected one lag. If we use three lags, as in the level specification, a negative response of inflation rate emerges. The results are diverse when using IPCA for

Figure 8
Third subsample: responses to an interest-rate shock using estimation including
EMBIS - different specifications



Nonetheless, the model may be misspecified since the interest rate reacted strongly to the financial crises during the Real Plan period. Figure 8 shows the impulse-response functions of inflation rate, nominal interest rate and price level to an interest-rate shock using the five-variable model that includes the EMBI spread (EMBIS). Each column refers to a different model specification. The rise in the nominal interest rate is also accompanied by an increase in the real interest

the price index. With the level specification, there is a reduction in the price level and inflation rate that occurs only during the second month. In contrast, with the growth-rate specification, there is an “inflation-rate puzzle”. Other estimations, such as in Rabanal and Schwartz (2001), have also found an inflation-rate puzzle for this period.

rate (not shown). With the growth-rate specification, there is a temporary decline in the inflation rate.²⁴ Most importantly, with the level specification, using either IGP-DI or IPCA, there is a highly persistent decline in the price level.

Hence, it seems that monetary policy has gained power to affect prices in the recent period, although the results are not conclusive.

3.4 Reaction of monetary policy to shocks

The paper evaluates the reaction of monetary policy to inflation-rate, output and financial shocks by the conduct of the interest rate rather than by the behavior of some monetary aggregate. There exists a pattern that holds in all subsamples: the nominal interest rate reacts positively to inflation-rate shocks, but the response is initially smaller than the rise in the inflation rate. At least during the first two months, the real interest rate is negative. There are several possible explanations for this behavior, which are not necessarily incompatible. A first explanation is based on the policy regime. The Central Bank may have reacted passively to inflation-rate shocks. A second possible interpretation relies on the practice of some interest-rate smoothing by the Central Bank. In reaction to shocks, the interest rate is not adjusted immediately to the value considered as optimal.²⁵ We can expect, however, that the interest rate reaches its desired level after some time. A third explanation is that the monetary authority does not observe contemporaneously the inflation-rate shock. Nevertheless, we would expect that, in the following period, the Central Bank would adjust the interest rate accordingly. A fourth interpretation could be that the Central Bank reacts to the expected rather than to the current inflation rate. Nonetheless, since there is a considerable degree of inflation persistence, mainly in the first and second subsamples, we can also expect a strong reaction to the current inflation rate.

Unfortunately, the VAR approach does not allow to determine specifically which one of these explanations is more appropriate. Nevertheless, in all the four mentioned cases, we can consider that the path of the interest rate, at least after the initial months, can be used as one of the indicators to assess whether the central bank reacts actively or passively to inflation-rate shocks. It is important to stress that the paper does not use the *average* real interest rate to assess monetary policy, but the reaction of the interest rate to innovations to the inflation rate and output.

²⁴Hence, the inflation-rate puzzle verified when using IPCA is eliminated.

²⁵For example, as estimated in Clarida et al. (2000), the Federal Reserve Bank has a tendency to smooth changes in the interest rate.

After the two-month horizon, the interest-rate behavior presents some differences across periods. In the first subsample, the real interest rate is still negative at least over the following three months, and is not significantly different from zero after that.

In the high-inflation period, the real interest rate is significantly positive in the fourth month, but returns to zero in the sixth month. The reaction of the monetary authority seems to be stronger than that in the first subsample. Since the significant positive real interest rate lasts only one month, we cannot regard this as an active reaction of monetary policy.²⁶ On the other hand, given the small sensitivity of the inflation rate to monetary policy shocks in the moderately-increasing- and high-inflation periods, the incentives to a more active monetary policy are low.

For the third subsample, the results are mixed. Using the level specification, the impulse response refers to shocks to the price level. The real interest rate is basically zero as of the third month.²⁷ In contrast, employing the growth-rate specification, the real interest rate is positive and statistically significant over several months, but the result is not robust.²⁸

We can conclude that, in general, the interest rate responds with some delays to inflation-rate shocks, and that the first subsample shows a weaker response of the monetary authority.

Regarding the reaction to output innovations in the moderately-increasing-and high-inflation periods, it seems that the interest rate does not react to stabilize output (the response of the interest rate, measured in real terms, is negative or not positive). For the Real Plan period, the results are not conclusive.²⁹

Nonetheless, the reaction of monetary policy to the financial crises is evident during the Real Plan period. Figure 9 presents the impulse-response functions of the EMBI spread and nominal interest rate according to different model specifications. All specifications show a strong response of the interest rate to a shock to the EMBI spread.

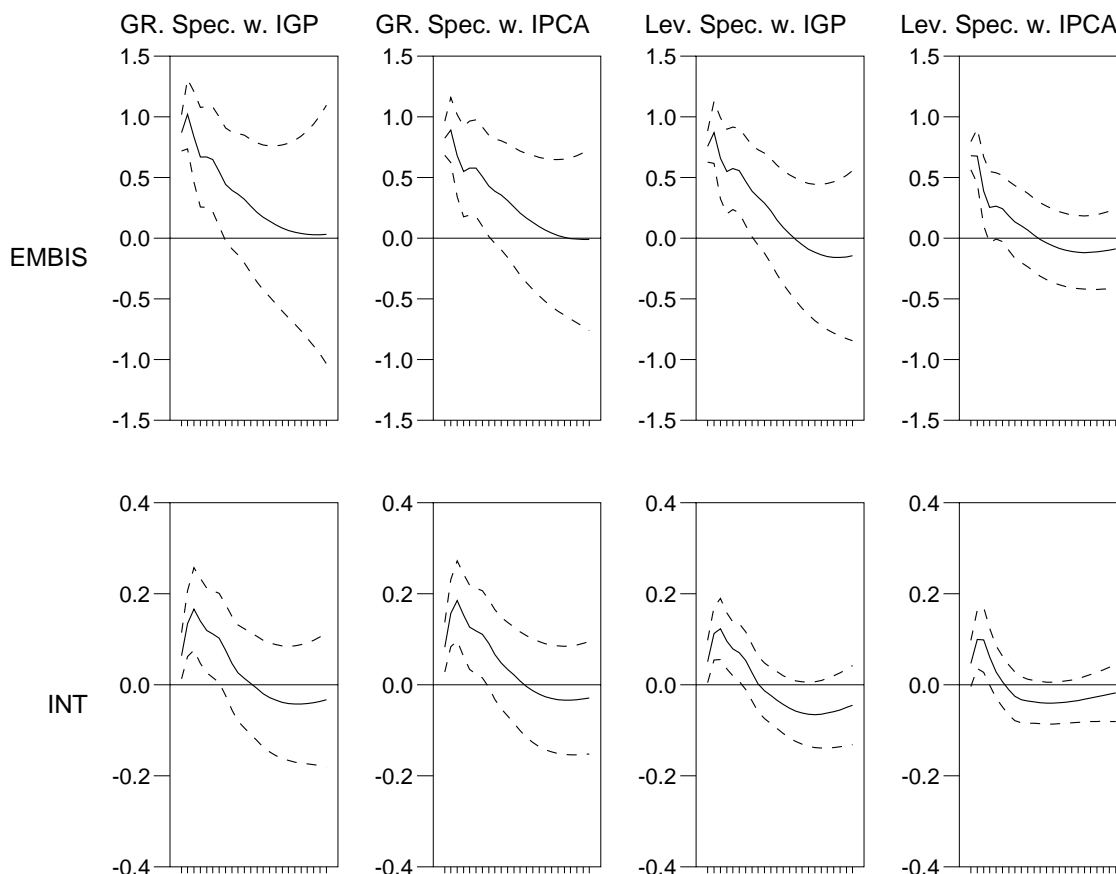
²⁶Using IPCA, the reaction is a little stronger: the point estimates of the real interest rate are positive between the second and fourth months (significant in the third month).

²⁷Including the exchange rate in the estimation, the response of the real interest rate to a price level shock is positive and significant in the fourth month.

²⁸In the estimation, augmenting the number of lags from one to two, including the exchange rate, or using IPCA changes the results.

²⁹Using IGP-DI, the indication of some positive reaction of real interest rate to output shocks in the four-variable model disappears when using the five-variable model with the EMBI spread. Employing IPCA, in the four-variable model, the point estimates are not usually statistically significant, whereas, in the five-variable model, there is even a negative response of the real interest rate.

Figure 9
Third subsample: responses to an EMBIS shock - different specifications



3.5 Reaction of money to inflation-rate shocks

Most of the estimations show a zero or positive response of money to inflation. A positive response of money supply, however, does not necessarily represent a passive monetary *policy*. Indeed, nominal money supply can rise, even when the central bank conducts an active monetary policy, considered here as an increase in the nominal interest rate in a greater proportion than the rise in the inflation rate.³⁰

³⁰If the increment in the demand for money balances resulting from the higher price level more than offsets the reduction in the demand for real balances arising from the greater opportunity

In all subsamples, an inflation-rate shock generates a decline in the real money levels.³¹ The real money reduction extends approximately over the period in which the inflation-rate response is still positive. Since the response of the real interest rate is not usually positive, I do not conclude that the decrease in the real money levels reflects an active monetary policy. I interpret it as a consequence of the fall in the demand for real money balances resulting from the increase in the opportunity cost of holding money.

3.6 Interest rate and money

Liquidity effect refers to a negative response of the interest rate to a rise in the money *supply*. Unfortunately, the model used does not allow to isolate the money supply shocks.³² Nevertheless, some results emerge regarding the relation between interest rate and money, the identification of a monetary policy shock, and the conduct of monetary policy.

The subsection considers two issues. The first is whether a positive interest-rate shock is accompanied by a decline in the level or growth rate of money. The second is whether a positive money shock is accompanied by a decrease in the interest rate.

In general, the results indicate a negative response of money to interest-rate shocks, although temporary in some cases. These results are robust to the alternative ordering of the variables, where money appears before interest rate.³³ In terms of real balances, most of the subsamples show that an interest-rate shock leads to a fall in the real money level, although usually temporary. This result is also robust to the alternative ordering.³⁴

cost of holding money, we would observe an expansion in the money supply. In fact, we could find that inflation rate Granger causes money supply. Similarly, an increase in the growth rate of money smaller than the rise in the inflation rate cannot necessarily be associated with an active monetary policy because it can be the result of the lower demand for real balances.

³¹Except for the third subsample using IPCA.

³²Part of the controversy of the empirical verification of the liquidity effect is related to the inappropriate treatment of innovations to monetary aggregates as shocks to monetary policy. See Bernanke and Mihov (1998a).

³³There are some exceptions, however, in the third subsample. With the growth-rate specification using IGP-DI, there is no response of M1 growth rate. Employing IPCA, with the growth-rate formulation, the response is negative, although not significant, whereas with the level specification, there is no response. Figures with the impulse-response functions to interest-rate and money innovations using the alternative ordering are available upon request.

³⁴With the alternative ordering, however, there is no response of real money in the third subsample with the growth-rate specification (using IGP-DI), and with IPCA using the level specification.

The finding of a negative response of money to a positive interest-rate shock is consistent with interpreting the interest-rate innovation as a monetary policy shock. Central banks, by operating in the open market, sell bonds to raise interest rate, reducing monetary reserves and thus affecting negatively M1. If positive interest-rate innovations were reflecting positive shocks to money demand instead of reflecting shocks to monetary policy, we would not observe a decrease in money following the shock.³⁵ In contrast, money innovations seem to reflect shocks to money demand, as we shall see next.

When we consider the effect of money shocks on the interest rate, the results depend on the identification assumption. Employing the benchmark ordering, we do not find strong evidence of a fall in the interest rate.³⁶ Hence, the orthogonalized money innovation more likely reflects a shock to money *demand* instead of money *supply*. In contrast, with the alternative ordering (M1 before interest rate), a negative response of the interest rate is commonly present. In this case, the estimated money innovations are dominated by shocks to money supply.

The results are also coherent with the fact that the Central Bank uses the interest rate as the target variable instead of a monetary aggregate such as M1. In the case of an interest-rate target, the monetary authority accommodates variations in the money demand. Changes in the interest rate are the result of the conduct of monetary policy. In the case of a monetary aggregate target, changes in the monetary aggregate represent movements of monetary policy, and changes in the money demand translate into variations in the interest rate. If the Central Bank targeted M1, positive innovations to interest rate, in the case of the alternative ordering, would reflect only positive shocks to money demand. As a consequence, we could not observe the reduction in money verified in the estimation. In addition, notice that positive money innovations in the benchmark ordering, which we interpret basically as shocks to money demand, are not followed by increases in the interest rate.

Therefore, we can reach three conclusions. First, it seems more appropriate to use interest-rate innovations instead of money innovations as a measure of monetary *policy* shocks. Second, the Central Bank has targeted interest rate. Third, although we cannot identify money supply shocks, the results allow us to infer that there is a negative correlation between money supply and interest rate.

³⁵Similar argument in a VAR estimation for the U.S. is found in Christiano et al. (1996).

³⁶For the second subsample, there is some indication of reduction in the nominal and real interest rates.

4. Conclusions

Despite the instability of Brazilian economy, it is possible, using a VAR estimation, to assess basic macroeconomic relationships and obtain some evidence on monetary policy. Some relationships hold across periods, such as the real effects of monetary policy shocks, and the negative response of money to positive interest-rate innovations. In terms of monetary policy, the response to inflation-rate shocks is conducted with some delay. In the recent period, the reaction of the interest rate to financial shocks is pronounced. The effects of monetary policy innovations on output seem to have increased recently. In the moderately-increasing- and high-inflation periods, monetary policy shocks were not effective to curb inflation. In the recent period, however, there exists some evidence that monetary policy has gained power to affect prices, which may be related to the substantial reduction in the degree of inflation persistence. The estimation also confirms the fact that Central Bank targets interest rate instead of M1.

Some results are not very conclusive for the Real Plan period probably because of the short size of the sample, existence of a period of transition between the high and low-inflation environments, changes in the exchange-rate regime, adoption of inflation targeting in July 1999, etc.

References

- Andrade, J. P. & Divino, J. A. C. A. (2000). Optimal rules for monetary policy in Brazil. mimeog.
- Bernanke, B. S., Gertler, M., & Watson, M. (1997). Systematic monetary policy and the effects of oil price shocks. *Brookings Papers on Economic Activity*, 1:91–157.
- Bernanke, B. S. & Mihov, I. (1998a). The liquidity effect and long-run neutrality. *Carnegie-Rochester Conference on Public Policy*, 49:149–194.
- Bernanke, B. S. & Mihov, I. (1998b). Measuring monetary policy. *Quarterly Journal of Economics*.
- Blanchard, O. J. (1989). A traditional interpretation of macroeconomic fluctuations. *American Economic Review*, 79(5):1146–1164.
- Cati, R. C., Garcia, M. G. P., & Perron, P. (1999). Unit roots in the presence of abrupt governmental interventions with an application to Brazilian data. *Journal of Applied Econometrics*, 14:27–56.

- Christiano, L. J., Eichenbaum, M., & Evans, C. L. (1996). Identification and the effects of monetary policy shocks. In Blejer, Mario I. and Zvi Eckstein and Zvi Hercowitz and Leonard Leiderman, editor, *Financial Factors in Economic Stabilization and Growth*, pages 36–74. Cambridge University Press, Cambridge.
- Christiano, L. J., Eichenbaum, M., & Evans, C. L. (1999). Monetary policy shocks: What have we learned and to what end? In Taylor, John B. and Michael Woodford, editor, *Handbook of Macroeconomics*, pages 65–148. Elsevier, Amsterdam.
- Clarida, R., Galí, J., & G. (2000). Monetary policy rules and macroeconomic stability: Evidence and some theory. *Quarterly Journal of Economics*, 115(1):147–180.
- Dickey, D. A. & Pantula, S. G. (1987). Determining the order of differencing in autoregressive processes. *Journal of Business and Economic Statistics*, 5(4):455–461.
- Doan, T. A. (2000). *Rats Version 5 User's Guide*. Estima, Evanston.
- Fiorencio, A. & Moreira, A. R. B. (1999). Latent indexation and exchange rate passthrough. Rio de Janeiro, IPEA, Texto para Discussão no. 650.
- Freitas, P. S. & Muinhos, M. K. (2001). A simple model for inflation targeting in Brazil. Central Bank of Brazil, Working Paper Series, no. 18.
- Friedman, B. M. (1996). Economic implications of changing share ownership. NBER Working Paper 5141.
- Friedman, B. M. & Kuttner, K. N. (1992). Money, income, prices, and interest rates. *American Economic Review*, 82(3):472–492.
- Galí, J. (1992). How Well Does the IS-LM Model Fit Postwar U.S. Data? *Quarterly Journal of Economics*, 107(2):709–738.
- Hamilton, J. D. (1994). *Time Series Analysis*. Princeton University Press, Princeton.
- Hansen, H. & Juselius, K. (1995). *CATS in RATS: Cointegration Analysis of Time Series*. Estima, Evanston.
- Johansen, S., Mosconi, R., & Nielsen, B. (2000). Cointegration analysis in the presence of structural breaks in the deterministic trend. *Econometrics Journal*, 3:216–249.

- Kim, S. (1999). Do Monetary Policy Shocks Matter in G-7 Countries? Using Common Identifying Assumptions about Monetary Policy across Countries. *Journal of International Economics*, 48:387–412.
- Lopes, F. (1997). O mecanismo de transmissão de política monetária numa economia em processo de estabilização: Notas sobre o caso do Brasil. *Revista de Economia Política*, 17(3):5–11.
- Pastore, A. C. (1994/1995). Déficit público, a sustentabilidade do crescimento das dívidas interna e externa, senhoriagem e inflação: Uma análise do regime monetário brasileiro. *Revista de Econometria*, 14(2):177–234.
- Pastore, A. C. (1997). Passividade monetária e inércia. *Revista Brasileira de Economia*, 51(1):3–51.
- Rabanal, P. & Schwartz, G. (2001). Testing the effectiveness of the overnight interest rate as a monetary policy instrument. In *Brazil: Selected Issues and Statistical Appendix*. International Monetary Fund, Washington, D.C. IMF Country Report No. 01/10.
- Sims, C. A. (1992). Interpreting the macroeconomic time series facts: The effects of monetary policy. *European Economic Review*, 36:975–1000.
- Sims, C. A., Stock, J. H., & Watson, M. W. (1990). Inference in linear time series models with some unit roots. *Econometrica*, 58(1):113–144.
- Watson, M. W. (1994). Vector autoregression and cointegration. In Engle, R. F. & D. L. McFadden, editor, *Handbook of Econometrics*, pages 2844–2915. Elsevier, Amsterdam. vol. IV.

Appendix

Table A.1
Augmented Dickey-Fuller Test for Unit Root

Subsample and test	Output	Inflation rate	Price level	Nominal interest rate	Growth rate of M1 (s.a.)	M1 level (s.a.)	EMBI spread
First subsample: 1975:01 - 1985:07							
Lag length	14	3	4	3	4	1	
Based on autoregressive coefficient	-6.29	-26.8**	0.08 [^]	-6.73	-178.94***	3.16 [^]	
Based on <i>t</i> statistic	-1.51	-3.34	0.07 [^]	-1.84	-7.48***	2.70 [^]	
Multiple Unit Root Test							
Null H: Variable is <i>I</i> (2)	-8.43***		-2,28	-12.27***		-6.20***	
Third Subsample: 1994:09 - 2000:12							
Lag Length	3	3	2	1	2	3	3
Based on autoregressive coefficient	-12,45	-67.11***	-8,78	-11,92	-69.97***	-10,33	-7,83
Based on <i>t</i> Statistic	-1.95	-4.88***	-2.15	-2.53	-9.96***	-2.87	-1.86
Multiple Unit Root Test							
Null H: Variable is <i>I</i> (2)	-6.03***		-5.38***	-6.76***		-5.38***	-6.27***

Notes. 1. *, **, *** indicate rejection in favor of stationary alternative at the 10%, 5%, and 1% significance levels, respectively, whereas [^] indicates rejection in favor of explosive alternative at the 1% significance level. 2. Estimation has included constant and trend terms. In the case of the third period, the results are similar when including only a constant. 3. s.a. indicates seasonally adjusted series. 4. In the case of output for the second period (1985:08 - 1994:06), the values found were -32.27 and -4.32 (using 1 lag) for the test based on the autoregressive coefficient and for the *t* statistic, respectively. Both are significant at the 1% level. For the whole period (1975:01 - 2000:12), the values found were -21.62 and -3.43 (using 2 lags), significant at the 5% level. 5. The lag length refers to the equation in levels. The lag length chosen for the multiple root test is not shown.

Table A.2
VAR estimations

First subsample (1975:01 – 1985:07)					Second subsample (1985:08 – 1994:06)				
Regressands					Regressands				
Regressors	Y_t	INF_t	INT_t	$GRM1_t$	Regressors	Y_t	INF_t	INT_t	$GRM1_t$
Y_{t-1}	0.67 (0.09)	-0.02 (0.06)	-0.04 (0.03)	0.15 (0.10)	Y_{t-1}	0.82 (0.13)	0.07 (0.12)	0.09 (0.12)	0.57 (0.24)
Y_{t-2}	0.31 (0.10)	0.08 (0.06)	0.03 (0.04)	-0.02 (0.11)	Y_{t-2}	-0.01 (0.17)	0.09 (0.16)	-0.09 (0.15)	-0.24 (0.31)
Y_{t-3}	-0.04 (0.09)	-0.05 (0.05)	0.00 (0.03)	-0.10 (0.09)	Y_{t-3}	0.13 (0.16)	0.20 (0.15)	0.14 (0.14)	-0.36 (0.29)
INF_{t-1}	-0.14 (0.16)	0.51 (0.10)	0.02 (0.06)	0.08 (0.17)	Y_{t-4}	0.01 (0.11)	-0.19 (0.10)	-0.04 (0.10)	0.13 (0.20)
INF_{t-2}	0.40 (0.18)	-0.03 (0.11)	0.03 (0.07)	-0.07 (0.19)	INF_{t-1}	-0.05 (0.12)	0.95 (0.11)	0.60 (0.11)	-0.12 (0.22)
INF_{t-3}	-0.10 (0.16)	0.33 (0.10)	0.05 (0.06)	0.10 (0.17)	INF_{t-2}	0.23 (0.12)	-0.23 (0.12)	-0.02 (0.11)	-0.01 (0.23)
INT_{t-1}	-0.68 (0.28)	-0.15 (0.18)	0.71 (0.11)	-0.94 (0.30)	INF_{t-3}	-0.16 (0.11)	-0.25 (0.11)	-0.24 (0.10)	0.02 (0.21)
INT_{t-2}	-0.04 (0.35)	0.16 (0.22)	-0.07 (0.13)	1.46 (0.37)	INF_{t-4}	0.03 (0.10)	0.22 (0.09)	0.07 (0.09)	-0.15 (0.18)
INT_{t-3}	0.51 (0.31)	0.13 (0.20)	0.27 (0.12)	-0.16 (0.33)	INT_{t-1}	-0.17 (0.12)	0.40 (0.12)	0.48 (0.11)	-0.40 (0.23)
$GRM1_{t-1}$	-0.01 (0.10)	0.00 (0.06)	0.03 (0.04)	-0.12 (0.10)	INT_{t-2}	-0.01 (0.14)	-0.46 (0.13)	-0.14 (0.13)	1.84 (0.26)
$GRM1_{t-2}$	0.03 (0.09)	-0.02 (0.06)	-0.01 (0.03)	0.22 (0.09)	INT_{t-3}	-0.08 (0.17)	0.48 (0.16)	0.29 (0.15)	-0.60 (0.31)
$GRM1_{t-3}$	0.23 (0.09)	-0.02 (0.06)	0.00 (0.03)	0.19 (0.09)	INT_{t-4}	0.13 (0.16)	-0.06 (0.15)	0.09 (0.14)	0.07 (0.29)
Constant	28.98 (12.27)	-5.83 (7.74)	3.03 (4.60)	-10.02 (13.09)	$GRM1_{t-1}$	0.09 (0.05)	0.03 (0.04)	-0.03 (0.04)	0.08 (0.09)
					$GRM1_{t-2}$	-0.04 (0.04)	-0.04 (0.04)	-0.08 (0.04)	0.40 (0.08)
					$GRM1_{t-3}$	0.00 (0.05)	0.04 (0.04)	0.03 (0.04)	-0.16 (0.09)
					$GRM1_{t-4}$	0.03 (0.04)	-0.06 (0.03)	-0.01 (0.03)	0.08 (0.07)
					Constant	19.11 (31.54)	-76.83 (29.90)	-48.16 (28.70)	-55.06 (58.54)
Centered R^2	0.9548	0.8458	0.9577	0.7796		0.8932	0.9781	0.9796	0.9591
Adjusted Centered R^2	0.9438	0.8084	0.9474	0.7261		0.8324	0.9656	0.9679	0.9359
Mean of Dep. Variable	448.63	5.74	5.36	5.01		466.42	22.49	23.15	21.92
Standard Error of Dep. Variable	9.09	3.11	3.52	4.39		7.22	15.12	15.02	21.66
Standard Error of Estimate	2.16	1.36	0.81	2.30		2.96	2.80	2.69	5.49
Sum of Squared Residuals	459.97	183.04	64.57	523.27		567.83	510.60	470.43	1956.75

Notes: Standard errors in parentheses. Because of the limited space, the estimates for the dummy variables are not shown here.

Table A.2 (continuation)
VAR estimations

Third subsample (1994:09 – 2000:12)									
Growth-rate specification					Level specification				
Regressands					Regressands				
Regressors	Y_t	INF_t	INT_t	$GRM1_t$	Regressors	Y_t	P_t	INT_t	$M1_t$
Y_{t-1}	0,75 (0,09)	-0,01 (0,03)	0,01 (0,01)	-0,14 (0,12)	Y_{t-1}	0,45 (0,15)	-0,03 (0,05)	-0,01 (0,02)	-0,26 (0,20)
INF_{t-1}	0,14 (0,36)	0,41 (0,12)	0,08 (0,05)	0,10 (0,50)	Y_{t-2}	0,34 (0,15)	0,00 (0,05)	0,03 (0,02)	-0,04 (0,21)
INT_{t-1}	-1,09 (0,41)	0,03 (0,13)	0,94 (0,05)	-0,41 (0,57)	Y_{t-3}	0,07 (0,15)	0,05 (0,05)	0,02 (0,02)	0,31 (0,21)
$GRM1_{t-1}$	0,05 (0,08)	0,04 (0,02)	0,00 (0,01)	0,35 (0,10)	P_{t-1}	-0,12 (0,42)	1,46 (0,14)	0,14 (0,05)	0,23 (0,56)
Constant	122,33 (43,37)	4,40 (14,06)	-6,58 (5,39)	69,14 (59,57)	P_{t-2}	0,96 (0,69)	-0,45 (0,23)	-0,23 (0,08)	-0,13 (0,93)
					P_{t-3}	-0,84 (0,46)	-0,02 (0,15)	0,06 (0,05)	-0,01 (0,61)
					INT_{t-1}	-3,18 (1,32)	-0,28 (0,44)	0,75 (0,15)	-1,95 (1,78)
					INT_{t-2}	1,42 (1,53)	-0,38 (0,51)	-0,05 (0,17)	-0,75 (2,06)
					INT_{t-3}	0,61 (1,16)	0,70 (0,39)	0,10 (0,13)	1,42 (1,56)
					$M1_{t-1}$	0,02 (0,10)	0,05 (0,03)	0,00 (0,01)	1,28 (0,14)
					$M1_{t-2}$	0,08 (0,16)	-0,11 (0,05)	-0,01 (0,02)	-0,45 (0,22)
					$M1_{t-3}$	-0,10 (0,10)	0,06 (0,03)	0,01 (0,01)	0,12 (0,14)
					Constant	65,14 (50,93)	-6,38 (16,97)	-8,17 (5,69)	20,55 (68,53)
Centered R^2	0,7023	0,3357	0,8960	0,7796		0,7668	0,9981	0,9237	0,9952
Adjusted									
Centered R^2	0,6266	0,1668	0,8695	0,7235		0,6574	0,9972	0,8879	0,9929
Mean of Dep.									
Variable	476,87	0,87	2,22	2,31		476,91	497,65	2,15	1047,92
Standard Error									
of Dep. Variable	4,17	0,91	0,88	6,66		4,22	15,46	0,82	39,45
Standard Error									
of Estimate	2,55	0,83	0,32	3,50		2,47	0,82	0,28	3,33
Sum of Squared									
Residuals	383,85	40,35	5,93	724,11		299,29	33,21	3,73	541,86

Notes: Standard errors in parentheses. Because of the limited space, the estimates for the dummy variables are not shown here.