



## Case Report

# DNA microarray expression profiling of a new t(8;13) AML case allows identification of possible leukemogenic transformation markers



Aline Rangel Pozzo<sup>a</sup>, Fernanda Costas Casal de Faria<sup>a</sup>, Luize Otero de Carvalho<sup>a</sup>,  
Marcos Barcelos de Pinho<sup>b</sup>, Raquel Ciivalschi Maia<sup>a,\*</sup>

<sup>a</sup> Instituto Nacional de Câncer (INCA), Rio de Janeiro, RJ, Brazil

<sup>b</sup> Universidade Federal do Rio de Janeiro (UFRJ), RJ, Brazil

## ARTICLE INFO

### Article history:

Received 10 April 2017

Accepted 23 June 2017

Available online 22 July 2017

## Introduction

Acute myeloid leukemia (AML) is a disease characterized by clonal proliferation and accumulation of myeloid progenitor cells in the bone marrow (BM), inhibition of cell differentiation, increased proliferative index and defective apoptosis.<sup>1</sup> AML secondary to myelodysplastic syndrome (MDS-sAML) is characterized by diverse cytogenetic and molecular changes including del(5q), as well as changes in the RNA splicing pathway, TET2, EZH2, FLT3, NRAS, NPM1, RUNX1, DNMT3a, IDH1, IDH2, TET2, TP53 genes, etc.<sup>2</sup> Established prognostic factors in AML include age, the cytogenetic and molecular profile and history of hematologic disorders, such as MDS.<sup>1</sup> About 40% of elderly AML patients were previously diagnosed with MDS, which is usually refractory to chemotherapy.<sup>1</sup> We present a case of a sAML, which showed a single and

previously not described abnormality, a chromosomal translocation between chromosomes 8 and 13 t(8;13) identified by conventional cytogenetics, and several altered genes detected by DNA microarray assay, suggesting that the t(8;13) rearranged region results in altered gene expression patterns.

## Case report

The patient was a 72-year-old female admitted to the Instituto Nacional de Cancer (INCA), Rio de Janeiro, Brazil. She presented with a history of increasing fatigue and dyspnea. Past medical history included arterial hypertension, coronary artery disease, myalgia and pneumonia. The laboratory results at diagnosis revealed: white blood cell count  $36.9 \times 10^9/L$  with 41% monocytoid blasts, hematocrit 23%, hemoglobin 7.6 g/dL, platelets  $131.0 \times 10^9/L$  and lactate dehydrogenase 806 IU/L. A

\* Corresponding author at: Laboratório de Hemato-Oncologia Celular e Molecular, Instituto Nacional de Câncer, Praça da Cruz Vermelha 23, 6° andar, Centro, 20230-130 Rio de Janeiro, RJ, Brazil.

E-mail address: [rcmaia@inca.gov.br](mailto:rcmaia@inca.gov.br) (R.C. Maia).

<http://dx.doi.org/10.1016/j.bjhh.2017.06.003>

1516-8484/© 2017 Associação Brasileira de Hematologia, Hemoterapia e Terapia Celular. Published by Elsevier Editora Ltda. This is an open access article under the CC BY-NC-ND license (<http://creativecommons.org/licenses/by-nc-nd/4.0/>).

bone marrow aspirate showed 34% myeloid and monocytoid blasts (FAB M4) with dysplastic features in erythroid and myeloid cells. Flow cytometry immunophenotyping identified CD33<sup>+</sup>, CD14<sup>+</sup>, CD11b<sup>+</sup>, CD13<sup>+</sup>, CD38<sup>-</sup>, HLA-DR<sup>-</sup>, CD15<sup>+</sup>, MPO<sup>-</sup>, CD117<sup>+</sup>, TDT<sup>-</sup>, cCD79a<sup>-</sup>, CD2<sup>-</sup>, and CD7<sup>-</sup> cells. Reverse transcription-polymerase chain reaction (RT-PCR) for RUNX1/RUNX1T1, BCR/ABL1 and MYH11/CBFB, showed no fusion transcripts. G-banding revealed an abnormal karyotype and the gene expression profile was investigated for altered genes in the rearranged t(8;13) region.

This study was approved by the institutional review board of INCA (number 110/06). The study was conducted in accordance with the Helsinki Declaration as revised in 2008.

## Methods

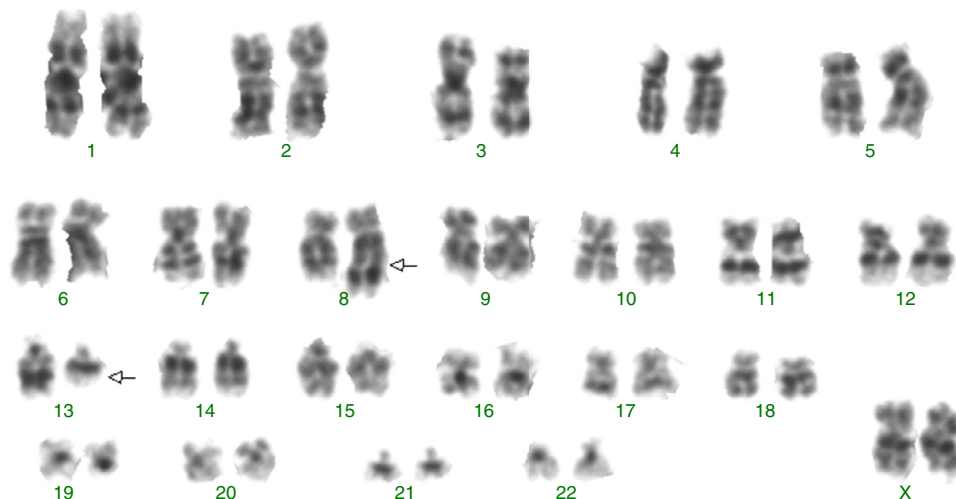
Cytogenetic analysis was performed on unstimulated BM cells for 24 h according to standard protocols with the karyotype being described according to the International System for Human Cytogenetic Nomenclature (ISCN, 2013).<sup>3</sup> The gene expression profile was investigated using an Affymetrix GeneChip Human Gene 1.0 ST Array (Affymetrix Inc., Santa Clara, CA, USA) following the manufacturer's instructions to identify differentially expressed genes in the rearranged t(8;13) region. Array data were extracted and processed with the open software packages from the Bioconductor Project ([www.bioconductor.org](http://www.bioconductor.org)). In brief, the data was normalized with Robust Multi-Array Average expression measure. Subsequently, a non-specific filter was applied with the genefilter package<sup>4</sup> in order to remove Affymetrix probes and genes that exhibited low variance across samples; differentially expressed genes were selected using the linear models for microarray data package and summarized at  $\log_2 > 2$ . RNA extracted from sAML peripheral blood was compared to normal peripheral blood using a pool of six healthy donors. Patient's relative gene expression levels were compared to the control sample level and lists of 'up-regulated' and 'down-regulated' genes were generated by the program.

## Results

G-banding revealed an abnormal karyotype with a translocation involving chromosome 8 and 13, resulting in the previously undescribed karyotype 46,XY,t(8;13)(q22;q11)[4]/46,XX[28] (Figure 1) according to the catalogs of cancer cytogenetics.<sup>5</sup> The microarray analysis labeled 874 as differentially expressed in over 28,000 genes. The gene expression levels (fold change), shown in Table 1, demonstrated down-regulated genes involved in myeloid development or apoptosis, including CEBPB, RARA, GATA3, TRIB1, TRIB2 and TNFRSF10C (TRAIL-R3). In addition, up-regulated genes related to proliferation, differentiation and drug resistance, such as KIT, IDH1, ERG, BIRC3 and ABCC4 were observed by microarray analysis. The gene RUNX1 (AML1) required for the generation of definitive hematopoietic stem cells during embryogenesis was up-regulated. The *brain and acute leukemia cytoplasmic (BAALC)* gene, located in the 8q22 region, and the *FLT3* and *RB1* genes, located in the 13q12 and 13q14 regions, respectively, appear to be intimately linked to the t(8;13). These genes were up-regulated suggesting that they could be altered due to the rearrangement of this region. Another gene that may have been inactivated due to this rearrangement is the *TRIB1* gene, located in the 8q24.13 region, which is a potent negative regulator of MAPK signaling.

## Discussion

sAML develops in approximately 40% of patients with MDS and the clinical discrimination between AML and MDS is based on cytomorphological analysis, since patients with MDS have dysplastic hematopoiesis and a myeloblast count of less than 20%, whereas those with a myeloblast count of 20% or more have AML.<sup>6</sup> sAML has clinical and biological heterogeneity linked to chromosome aberrations or molecular changes with the association between them suggesting that those mechanisms are significantly involved in leukemogenesis.<sup>1</sup> This case



**Figure 1 - Abnormal karyotype identified by G-banding with a translocation involving chromosome 8 and 13: 46,XY,t(8;13)(q22;q11)[4]/46,XX[28].**

**Table 1 – Up-regulated and down-regulated genes in t(8;13) acute myeloid leukemia secondary to myelodysplastic syndrome.**

Gene	Description	<sup>a</sup> Fold change	Chromosomal location
TRIB2	Tribbles homolog 2 (Drosophila)	-4.57	2p24.3
IDH1	Isocitrate dehydrogenase 1 (NADP+), soluble	4.03	2q33
KIT	V-kit Hardy-Zuckerman 4 feline sarcoma viral oncogene homolog	44.89	4q11-q12
TNFRSF10C	Tumor necrosis factor receptor superfamily, member 10c, decoy without an intracellular domain	-9.26	8p21-p22
BAALC	Brain and acute leukemia, cytoplasmic	9.13	8q22
TRIB1	Tribbles homolog 1 (Drosophila)	-6.72	8q24.13
GATA3	GATA binding protein 3	-4.54	10p15
BIRC3	Baculoviral IAP repeat-containing 3	4.29	11q22
FLT3	FMS-related tyrosine kinase 3	12.15	13q12
RB1	Retinoblastoma 1	5.55	13q14
ABCC4	ATP-binding cassette, sub-family C (CFTR/MRP), member 4	7.00	13q32
RARA	Retinoic acid receptor, alpha	-4.57	17q21
CEBPB	CCAAT/enhancer binding protein (C/EBP), beta	-4.28	20q13.1
RUNX1	Runt-related transcription factor 1	4.26	21q22
ERG	V-ets erythroblastosis virus E26 oncogene homolog (avian)	7.89	21q22.3

<sup>a</sup> Ratios between patient relative gene expression levels and controls.

report shows evidence that t(8;13)(q22;q11) could be involved in the pathogenesis and severity of AML. The translocation t(8;13) with breakpoints at (8q22) and (13q11) has neither been reported nor described for possible altered genes. The gene expression profile was performed to determine the specific signature in cells from this patient and to try to clarify a new possible molecular pathway involved in disease evolution. Of the 874 genes differentially expressed, we focused mainly on genes related to AML pathogenesis, prognosis and response to standard therapy, and the genes located in the altered chromosome region. Important genes such as CEBPB, which plays a pivotal role in proliferation and differentiation, including suppression of myeloid leukemogenesis,<sup>7</sup> RARA, which is required for optimal myelomonocytic differentiation<sup>7</sup> and GATA3 associated with erythropoiesis<sup>8</sup> were down-regulated as was the tumor suppressor gene TRIB2 and TNFRSF10C (TRAIL-R3) which is important in initiating apoptosis.<sup>9,10</sup> Genes involved with anti-apoptotic functions and resistance to drug therapy such as BIRC3 and ABCC4,<sup>11,12</sup> as well as genes that participate in the inhibition of differentiation or induction of proliferation such as, KIT, IDH1 and ERG were up-regulated.<sup>13-15</sup> Another gene that was up-regulated is the RUNX1 gene, which acts as a regulator of the expression of various genes specific to hematopoiesis, and plays an important role in myeloid differentiation. RUNX1 amplification is associated with increased risk of relapse and worse overall outcome in AML.<sup>16</sup> The BAALC gene, located in the 8q22.3 region, is a novel molecular marker indicating an unfavorable outcome in AML with normal cytogenetics.<sup>17</sup> Its high expression may act as an adverse prognostic factor through prompting cell proliferation and inhibiting apoptosis in leukemia cells such as in AML, acute lymphoblastic leukemia (ALL), and chronic myelogenous leukemia in blast crisis patients.<sup>17</sup> High levels

of the FLT3-wild-type receptor may promote constitutive activation of this receptor in malignant cells and is associated with a worse prognosis and high risk of relapse in pediatric AML patients.<sup>18</sup> The RB1 gene, located in the 13q14 region, is known as a tumor suppressor; abnormalities affecting the RB1 pathway are not always related to gene expression. These abnormalities are usually associated with a lack of the pRB protein or the expression of a mutant pRB, and inappropriate phosphorylation of pRB, leading to deregulated G1-S transition, that frequently occurs in malignant disorders.<sup>19</sup> There are alternative mechanisms that down-regulate pRB protein levels that include reduced translation of the RB1 mRNA, or reduced half-life of the mRNA and proteins having a role in leukemogenesis.<sup>19</sup> The Tribbles gene (TRIB-1) is a potent negative regulator of MAPK pathways that influence apoptosis, differentiation and cell-cycle progression. It is known as a tumor suppressor and is usually down-regulated in AML.<sup>9</sup> The expression of the BAALC, FLT3 and RB1 genes in this specific region appears relevant for the pathogenesis of AML as they could be regulated together in one regulatory module. Such combined expression suggests a probable higher functional relevance when compared to the expression of each gene independently.

## Conclusions

There are no reports in the literature of this type of rearrangement in patients with sAML, nor of the altered genes we found in this region, contributing to the pathogenesis of AML. Although there is not enough material to study protein fusion by next-generation sequencing, we found important up- and down-regulated genes involved in hematopoiesis in

this case of t(8;13). A better understanding of the molecular processes affected by the fusion of these genes involved in sAML may shed light on the role of this translocation in leukemogenesis, disease progression and its prognostic effects.

### Contributions

ARP and RCM were involved in designing the study and the literature search on the subject; RCM was involved in gathering the clinical data; LOC was involved in performing the cytogenetic analysis; FCCF and MBP were involved in performing gene expression analysis; ARP, FCCF, LOC; MBP and RCM were all involved in writing and editing the manuscript.

### Conflicts of interest

The authors declare no conflicts of interest.

### Acknowledgements

The authors thank to Marcos Antonio M. Scheiner for his invaluable comments. This study was supported by INCT, CNPq and FAPERJ.

### REFERENCES

- Lowenberg B, Downing JR, Burnett A. Acute myeloid leukemia. *N Engl J Med*. 1999;341:1051-62.
- Milosevic JD1, Puda A, Malcovati L, Berg T, Hofbauer M, Stukalov A, et al. Clinical significance of genetic aberrations in secondary acute myeloid leukemia. *Am J Hematol*. 2012;87(11):1010-6.
- Shaffer LG, McGowan-Jordan J, Schmid M. *ISCN 2013: an international system for human cytogenetic nomenclature*. 1st ed. S. Karger; 2013, 140 p.
- Smyth GK, Michaud J, Scott HS. Use of within-array replicate spots for assessing differential expression in microarray experiments. *Bioinformatics*. 2005;21(9):2067-75.
- Mittleman and Atlas of Genetics and Cytogenetics in Oncology and Hematology, <http://atlasgeneticsoncology.org/>.
- Vardiman JW, Thiele J, Arber DA, Brunning RD, Borowitz MJ, Porwit A, et al. The 2008 revision of the World Health Organization (WHO) classification of myeloid neoplasms and acute leukemia: rationale and important changes. *Blood*. 2009;114(5):937-51.
- Truong BT, Lee YJ, Lodie TA, Park DJ, Perrotti D, Watanabe N, et al. CCAAT/enhancer binding proteins repress the leukemic phenotype of acute myeloid leukemia. *Blood*. 2003;101(3):1141-8.
- Visvader J, Adams JM. Megakaryocytic differentiation induced in 416B myeloid cells by GATA-2 and GATA-3 transgenes or 5-azacytidine is tightly coupled to GATA-1 expression. *Blood*. 1993;82(5):1493-501.
- Gilby DC, Sung HY, Winship PR, Goodeve AC, Reilly JT, Kiss-Toth E. Tribbles-1 and -2 are tumour suppressors, down-regulated in human acute myeloid leukaemia. *Immunol Lett*. 2010;130(1-2):115-24.
- Riccioni R, Pasquini L, Mariani G, Saulle E, Rossini A, Diverio D, et al. TRAIL decoy receptors mediate resistance of acute myeloid leukemia cells to TRAIL. *Haematologica*. 2005;90(5):612-24.
- Hess CJ, Berkhof J, Denkers F, Ossenkoppele GJ, Schouten JP, Oudejans JJ, et al. Activated intrinsic apoptosis pathway is a key related prognostic parameter in acute myeloid leukemia. *J Clin Oncol*. 2007;25(10):1209-15.
- Jedlitschky G, Burchell B, Keppler D. The multidrug resistance protein 5 functions as an ATP-dependent export pump for cyclic nucleotides. *J Biol Chem*. 2000;275:30069-74.
- Yarden Y, Kuang WJ, Yang-Feng T, Coussens L, Munemitsu S, Dull TJ, et al. Human proto-oncogene c-kit: a new cell surface receptor tyrosine kinase for an unidentified ligand. *EMBO J*. 1987;6(11):3341-51.
- Smolková K, Ježek P. The role of mitochondrial NADPH-dependent isocitrate dehydrogenase in cancer cells. *Int J Cell Biol*. 2012;2012:273947.
- Marcucci G, Baldus CD, Ruppert AS, Radmacher MD, Mrózek K, Whitman SP, et al. Overexpression of the ETS-related gene, ERG, predicts a worse outcome in acute myeloid leukemia with normal karyotype: a Cancer and Leukemia Group B study. *J Clin Oncol*. 2005;23(36):9234-42.
- Reichard KK, Kang H, Robinett S. Pediatric B-lymphoblastic leukemia with RUNX1 amplification: clinicopathologic study of eight cases. *Mod Pathol*. 2011;24(12):1606-11.
- Xu B, Chen G, Shi P, Guo X, Xiao P, Wang W, et al. shRNA-mediated BAALC knockdown affects proliferation and apoptosis in human acute myeloid leukemia cells. *Hematology*. 2012;17(1):35-40.
- Kang HJ, Lee JW, Kho SH, Kim MJ, Seo YJ, Kim H, et al. High transcript level of FLT3 associated with high risk of relapse in pediatric acute myeloid leukemia. *J Korean Med Sci*. 2010;25(6):841-5.
- Zhu YM, Bradbury D, Russell N. Decreased retinoblastoma protein expression in acute myeloblastic leukaemia is associated with the autonomous proliferation of clonogenic blasts. *Br J Haematol*. 1994;86(3):533-9.