

## Case Report

# First observation of Hb Ullevaal [ $\beta$ 78(EF2) Leu>Val] in Turkey



F. Sinem Hocaoglu-Emre<sup>a,\*</sup>, Guven Yenmis<sup>b</sup>, Cengiz Yakicier<sup>c</sup>

<sup>a</sup> Duzen Laboratories Group, Istanbul, Turkey

<sup>b</sup> Istanbul University, Cerrahpasa Medical Faculty, Istanbul, Turkey

<sup>c</sup> Acibadem University, Istanbul, Turkey

## ARTICLE INFO

### Article history:

Received 26 August 2016

Accepted 30 September 2016

Available online 10 November 2016

## Introduction

So far, more than 800 mutations involving the *beta*-globin gene have been characterized worldwide. Most of these variants are also carried by patients with Turkish origin, since Turkey is one of the hotspot regions for mutations of the globin genes.<sup>1</sup>

In the present study, we report a case with an unusual high-performance liquid chromatography (HPLC) pattern who turned out to be a carrier of the  $\beta$ 78(EF2) Leu>Val; HBB: c.235 C>G mutation. This mutation is previously unreported in Turkish individuals.

## Case report

The patient attended our laboratory for hematological exams due to persistent anemia and hemoglobinopathy HPLC analysis was ordered as hemoglobinopathies are common in patients of Turkish descent.

The proband was a 70-year-old female from the eastern Black Sea region.

The complete blood count of the proband revealed a red blood cell (RBC) count of  $3.36 \times 10^3/L$ , hemoglobin (Hb) level of 8.7 g/dL, mean corpuscular volume (MCV) of 81.1 fL and mean corpuscular Hb (MCH) of 25.8 pg (Table 1).

HPLC analysis was performed using an in-house method employing an ultra-speed HPLC system with a 415 nm UV/VIS-Detector (Shimadzu Corp., Japan). The method to obtain a Hb chromatogram was modified from Ou et al.<sup>2</sup> The efficiency of the system is controlled prior to every analysis using a ready-to-use test solution containing the Hb variants Hb A<sub>1c</sub>, Hb F, Hb A, Hb E, Hb A<sub>2</sub>, Hb D, Hb S and Hb C, and control hemolysates at two levels of concentration, each containing Hb F, Hb A, Hb A<sub>2</sub> and Hb S (RECIPE Chemicals + Instruments GmbH, Germany).

In the HPLC analysis, the Hb A level was 38.8%, with a slightly increased Hb A<sub>2</sub> level (3.99%). No Hb F peak was seen in the first and following analyses. Besides this, an unknown 57.3% peak was identified in the Hb E window adjacent to the Hb A peak, indicating a possible heterozygous hemoglobin mutation. The sample was rerun and exhibited an identical pattern (Figure 1).

In order to have a detailed analysis of the suspected mutation, the *beta* globin gene was amplified by polymerase chain

\* Corresponding author at: Duzen Laboratuvari, Mecidiyekoy Mah, Cemal Sahir Sok, No: 14, Sisli, Istanbul, Turkey.

E-mail address: [sinememre@duzen.com.tr](mailto:sinememre@duzen.com.tr) (F.S. Hocaoglu-Emre).

<http://dx.doi.org/10.1016/j.bjhh.2016.09.013>

1516-8484/© 2016 Associação Brasileira de Hematologia, Hemoterapia e Terapia Celular. Published by Elsevier Editora Ltda. This is an open access article under the CC BY-NC-ND license (<http://creativecommons.org/licenses/by-nc-nd/4.0/>).

**Table 1 – The hematological and molecular data of the patient.**

Parameter	Proband	Reference range
Age (years) – gender	70, F	–
Hb (g/dL)	8.7	13.0–17.0
RBC ( $\times 10^3/L$ )	3.36	4.0–5.2
MCV (fL)	81.13	80–92
MCH (pg)	25.84	27–31
RDW-CV (%)	11.88	11.5–14.5
Hb A <sub>1c</sub> (%): retention time/min	35.01: 2.618	94–99
Hb A <sub>2</sub> (%): retention time/min	3.99: 3.141	0–3.90
Unknown peak (%): retention time/min	57.31: 2.701	–
Serum LDH level (U/L)	257	90–241
Serum iron level ( $\mu g/dL$ )	32	40–170
$\beta$ -Globin genotype	$\beta^{c.235 C>G}/\beta^A$	$\beta^A/\beta^A$

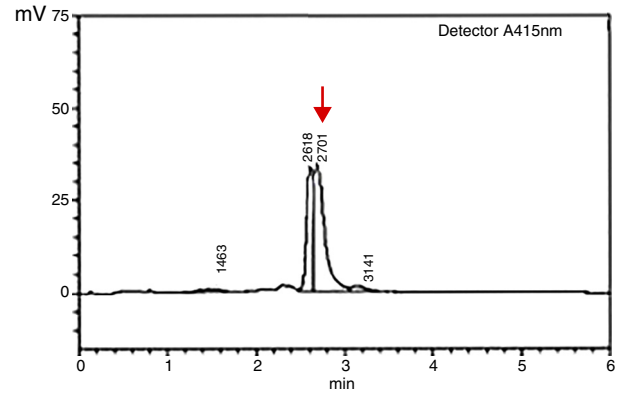
Hb: Hemoglobin; RBC: red blood cell count; MCV: mean corpuscular volume; MCH: mean corpuscular hemoglobin; RDW: red blood cell distribution width; LDH: lactate dehydrogenase.

Reference ranges used are based on the equipment manufacturers' established values for the gender and age group of the proband.

reaction (PCR) and the PCR product was analyzed by direct nucleotide sequencing using a Beckman Coulter CEQ 2000XL DNA sequencer.

DNA sequencing of the entire beta globin gene and the promoter region revealed the proband was heterozygous for the  $\beta 78(EF2)$  Leu>Val; HBB: c.235 C>G mutation, named Hb Ullevaal as described by Grimholt et al.<sup>3</sup> (Figure 2).

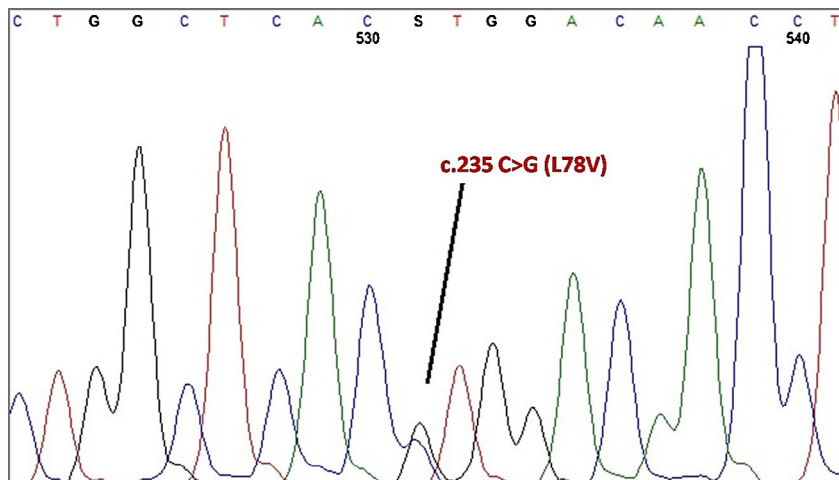
This variant has previously been reported in only one person, a 61-year-old female Norway resident from Bosnia, a community with cultural and economical aspects similar to Turkey since the Ottoman Empire, suggesting a historical path for the mutation. Although no abnormal pattern was observed by HPLC analysis and the mutation was detected incidentally when the patient was referred for the measurement of Hb A<sub>1c</sub>



Peak No	Retention Time (min)	Area	Variant	Conc.%
1	1.463	18 023	HbA <sub>1c</sub>	3681
2	2.618	171 448	HbA	35 015
3	2.701	280 623		57 311
4	3.141	19 553	HbA <sub>2</sub>	3993
Total				100 000

**Figure 1 – Pattern of the patient with  $\beta 78(EF2)$  Leu>Val; HBB: c.235 C>G mutation using an in-house high-performance liquid chromatography (HPLC) system. In our method, a reference HPLC pattern comprises Hb A<sub>1c</sub>, Hb F, Hb A and Hb A<sub>2</sub> chains respectively with their order of appearance on the chromatogram. However, an abnormal variant peak (indicated with an arrow) was observed in the proband on the 2.7th minute of the migration through the column with a concentration of 57.3%. Additionally, Hb A<sub>2</sub> level (retention time: 3.141 min) of the proband was slightly increased (3.99% compared to the reference range of 0–3.90%).**

by cation exchange HPLC, the variant Hb peak resided between Hb A and Hb A<sub>2</sub> on the HPLC chromatogram in the first report defining this substitution. Additionally, moderate anemia with decreased RBC, Hb, MCV, MCH and iron levels and a slightly elevated LDH concentration was present in the proband.



**Figure 2 – Sequence analysis of the case identified in the study showing the heterozygosity for Hb Ullevaal ( $\beta 78(EF2)$  Leu>Val; HBB: c.235 C>G).**

Unfortunately, we were not able to analyze other family members genetically. However, sequence analysis involving the *alpha* globin gene and *beta*-globin gene promoter region resulted in no variations.

As Leucine and Valine are both basic amino acids and this substitution does not change the net charge of the beta-globin molecule, a computerized analysis using the Garnier Osguthorpe Robson (GOR) method for protein structure prediction software revealed an altered beta helix structure. The loop angle corresponding to the substituted amino acid region was narrower assuming a conformational change in the protein.

The beta globin gene cluster haplotypes of this mutation are linked to haplotype 1 (+ - - - +) in our case.<sup>4</sup>

In conclusion, as the first report of the described mutation suggests there should be no anemia in the proband, the anemia seen in this case might be a result of iron deficiency or other conditions. This very first report of the  $\beta$ 78(EF2) Leu>Val; HBB: c.235 C>G mutation in a Turkish individual highlights the great diversity of the *beta* globin gene present in the Turkish population and contributes knowledge of the mutational relationship in a 'bench top archeological' manner between different communities due to historical connections.

---

## Conflicts of interest

The authors declare no conflicts of interest.

## REFERENCES

---

1. Patrinos GP, Giardine B, Riemer C, Miller W, Chui DH, Anagnou NP, et al. Improvements in the HbVar database of human hemoglobin variants and thalassemia mutations for population and sequence variation studies. *Nucleic Acids Res.* 2004;32:D537-41 (database issue).
2. Ou CN, Rognerud CL. Rapid analysis of hemoglobin variants by cation-exchange HPLC. *Clin Chem.* 1993;39(5):820-4.
3. Grimholt RM, Sudmann ÅA, Piehler AP, Urdal P, Klingenberg O. Hb Ullevaal [ $\beta$ 78(EF2)Leu→Val; HBB: c.235C>G], a new hemoglobin variant interfering with Hb A<sub>1c</sub> measurement using a cation exchange high performance liquid chromatography method. *Hemoglobin.* 2014;38(2):130-2.
4. Öztürk O, Atalay A, Kösel A, Özkan A, Koyuncu H, Bayram J, et al. Beta globin gene cluster haplotypes of abnormal hemoglobins observed in Turkey. *Turk J Haematol.* 2007;24(4):146-54.