

# Stoppa Intrapelvic Approach Provides Good Functional Clinical Outcomes: Prospective Study with a Minimum Follow-up of One Year and Comparison with the Literature

## *Acesso intrapélvico de Stoppa proporciona bons resultados clínicos funcionais: Estudo prospectivo com seguimento mínimo de um ano e comparação com a literatura*

Gabriel Canto Tomazini<sup>1</sup> Christiano Saliba Uliana<sup>1</sup> Marcelo Abagge<sup>1</sup>  
Henrique Reveilleau Fiorentin<sup>1</sup> Aramis Orlando Azevedo<sup>1</sup>

<sup>1</sup> Orthopedics and Traumatology Department, Hospital do Trabalhador, Universidade Federal do Paraná, Curitiba, PR, Brazil

Rev Bras Ortop 2024;59(3):e443–e448.

Address for correspondence Gabriel Canto Tomazini, Medical Doctor, Orthopedics and Traumatology Department, Hospital do Trabalhador, Universidade Federal do Paraná, Rua Itupava 1767, CEP 80040-455, Curitiba, Paraná, Brazil (e-mail: gabrieltomazini@yahoo.com.br).

### Abstract

**Objective** To describe the clinical and radiographic outcomes of a cohort of patients with acetabular fractures treated with the modified Stoppa approach.

**Methods** We conducted a prospective analysis of adult patients with acetabular fractures treated using the modified Stoppa approach from June 2020 to June 2021, with a minimum follow-up period of 12 months. The analysis included demographic, epidemiological, and perioperative data, as well as postoperative radiographic and functional outcomes.

**Results** The study included 15 cases, with 14 men (93.3%) and 1 woman (6.67%). A postoperative tomographic evaluation revealed an anatomical reduction in 50%, an imperfect reduction in 13.6%, and a poor reduction in 36.4% of the subjects. Regarding the functional scores, the Harris Hip Score ranged from 56 to 100, with a mean value of 92.5. The Majeed Pelvic Score classified the functional outcome as excellent in 36.5%, good in 40.6%, moderate in 18.7%, and poor in 4.2% of the cases.

**Conclusion** The present case series study demonstrated positive statistical relevance between reduction quality and functional outcomes and between the time until surgery and the reduction quality. The functional outcomes at a one-year of follow-up demonstrate that this approach can be an excellent alternative for anterior acetabulum fractures.

### Keywords

- ▶ acetabulum
- ▶ fracture fixation
- ▶ pelvis approach
- ▶ Stoppa

Work developed at the Orthopedics and Traumatology Department, Hospital do Trabalhador, Universidade Federal do Paraná, Curitiba, PR, Brazil.

received  
September 29, 2022  
accepted after revision  
January 18, 2023

DOI <https://doi.org/10.1055/s-0044-1785506>.  
ISSN 0102-3616.

© 2024. The Author(s).

This is an open access article published by Thieme under the terms of the Creative Commons Attribution 4.0 International License, permitting copying and reproduction so long as the original work is given appropriate credit (<https://creativecommons.org/licenses/by/4.0/>).  
Thieme Revinter Publicações Ltda., Rua do Matoso 170, Rio de Janeiro, RJ, CEP 20270-135, Brazil

## Resumo

**Objetivo** Descrever os resultados clínicos e radiográficos de uma coorte de pacientes com fraturas de acetábulo tratados com o acesso de Stoppa modificado.

**Métodos** Foi realizada uma análise prospectiva de pacientes adultos com fraturas de acetábulo tratados pela via de Stoppa modificada de junho de 2020 a junho de 2021 e com seguimento mínimo de 12 meses. Foram analisados dados demográficos, epidemiológicos, perioperatórios e resultados radiográficos e funcionais pós-operatórios.

**Resultados** Foram estudados 15 casos, sendo 14 homens (93,3%) e 1 mulher (6,67%). Na avaliação tomográfica pós-operatória, redução anatômica foi observada em 50% dos casos, imperfeita, em 13,6%, e ruim, em 36,4%.

Nos escores funcionais, encontramos uma variação de 56 a 100, com média de 92,5 no Harris Hip Score. No Majeed Pelvic Score, o resultado funcional foi excelente em 36,5% dos casos, bom, em 40,6%, moderado, em 18,7%, e ruim, em 4,2%.

**Conclusão** O estudo da série de casos demonstrou relevância estatística positiva entre a qualidade da redução e os desfechos funcionais, assim como entre o tempo até a cirurgia e a qualidade da redução. Os resultados funcionais no seguimento de um ano demonstram que o uso dessa via pode ser uma excelente alternativa para as fraturas anteriores do acetábulo.

## Palavras-chave

- ▶ abordagem pélvica
- ▶ acetábulo
- ▶ fixação de fratura
- ▶ Stoppa

## Introduction

Since the study by Judet et al.<sup>1</sup> in the 1960s, with evidence later reinforced by Letournel and Judet<sup>2</sup> and Matta,<sup>3</sup> the fundamental principle for acetabular fracture treatment is its anatomical reduction with stable fixation, resulting in better short- and long-term functional outcomes.<sup>1,3,4</sup> Open reduction with internal fixation is the gold standard treatment.<sup>5,6</sup> Success largely depends on adequate exposure of the fracture focus<sup>7,8</sup> for better reduction and subsequent positioning of the synthesis materials.

Assessing alternative approaches, Cole and Bolhofner<sup>9</sup> and Hirvensalo et al.<sup>10</sup> developed<sup>5,7,11,12</sup> an intrapelvic route to assure a wide approach to the true pelvis.<sup>5,7-9,13</sup> After its development, the authors found similarities in the method proposed by Stoppa et al.<sup>14</sup> in 1984 to manage complicated inguinal hernias.<sup>9,12</sup> This method enables direct visualization of the acetabulum, including the quadrilateral lamina,<sup>4-6,8</sup> the body of the pubis, the superior ramus, the pubic root, and the medial aspect of the posterior and anterior columns of the sacroiliac joint.<sup>5,7,8</sup> This exposure also enables plate configurations not feasible with traditional approaches<sup>7,9</sup> (such as the infrapectineal plate<sup>11</sup>). However, this method may entail complications, such as obturator nerve damage, corona mortis, rectus abdominis atrophy, and peritoneal injury.<sup>4,7</sup>

Today, the modified Stoppa approach may be an alternative to manage anterior acetabular fractures. Even with broad visualization of the true pelvis, 60% to 83%<sup>6</sup> of the cases may require a combination with other approaches for adequate reduction and fixation of some types of fracture,<sup>6,7,12</sup> including the lateral window ilioinguinal<sup>6,7</sup> and the Kocher-Langenbeck approaches.<sup>6,8</sup>

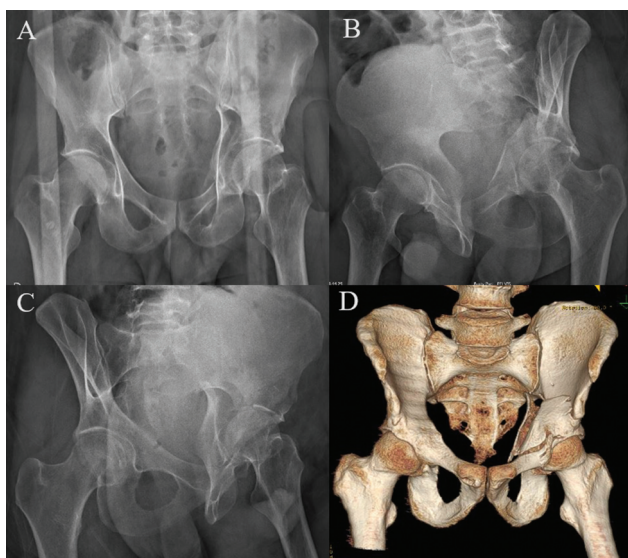
The present study aimed to describe the clinical and radiographic outcomes of a cohort of patients with acetabular fractures treated with the modified Stoppa approach.

## Materials and Methods

The institutional Ethics in Research Committee analyzed and approved the design of the present study under number CAAE 52764821.4.0000.5225. The prospective analysis included data from patients with acetabular fractures who underwent open reduction and internal fixation (ORIF) using the modified Stoppa approach in a university hospital from June 2020 to June 2021. The inclusion criteria were subjects over 18 years old with a minimum postoperative follow-up period of 12 months. The exclusion criteria were cases of osteoporotic/pathological fractures.

We selected the modified Stoppa approach for cases with acetabular anterior column involvement, either isolated or in combined fracture patterns. Thus, according to the Letournel and Judet classification,<sup>2</sup> fractures of the following types were included: anterior column, transverse, anterior column with posterior hemitransverse, T-shaped, and double-column fracture. For transverse fractures, we chose the anterior approach when the anterior column presented a higher deviation than the posterior column.

The data collected during the study included gender; age; trauma mechanism; preoperative Letournel<sup>15</sup> classification; postoperative reduction quality per the Matta criteria<sup>3</sup> (evaluated by two orthopedic doctors specialized in hips), through radiographs and computed tomography (CT) scans; days from admission to definitive approach; surgical time; blood loss; need for transfusion; other concomitant approaches; associated injuries; and peri- and postoperative



**Fig. 1** (A) Anteroposterior (AP) radiograph. (B) Obturator oblique radiograph. (C) Alar radiograph. (D) Three-dimensional (3D) computed tomography showing double column fracture of the left acetabulum.

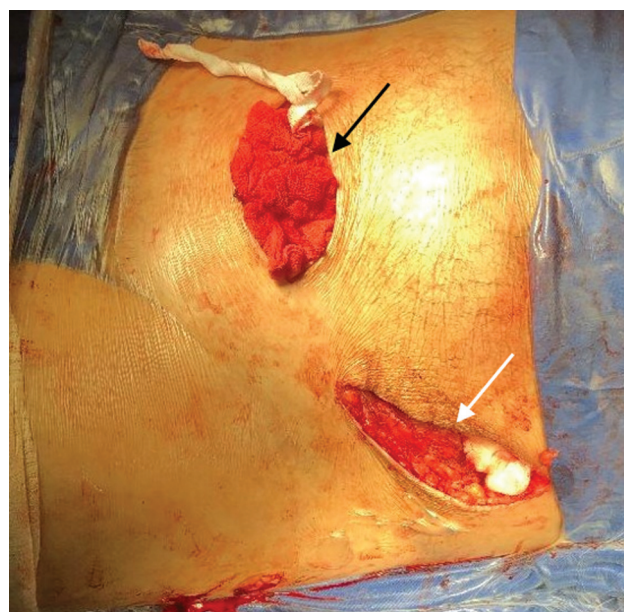
complications. The categories of the Matta<sup>3</sup> classification were the following: 1 (anatomical reduction), 2 (imperfect reduction, ranging from 1 mm to 3 mm), and 3 (poor reduction, greater than 3 mm). The patients answered functional questionnaires at one year of outpatient follow-up: the modified Harris Hip Score (HHS) and the Majeed Pelvic Score (MPS).

The routine preoperative and postoperative examinations included pelvic radiographs in anteroposterior and Judet views, axial CT of the pelvis with three-dimensional reconstruction, and laboratory tests (► **Fig. 1**). In the surgical center, we always perform trichotomy and image checking with fluoroscopy on a radiolucent table before starting the procedure. We prepared the entire lower limb on the affected side to have free mobility for flexion and traction to assist in reduction maneuvers during surgery. The modified Stoppa approach was always the first to be performed. Other approaches were performed sequentially during the procedure according to need and preoperative planning (► **Fig. 2**).

Motor physical therapy started early with free range of motion. Next, the authors instructed the patients to only bear the proprioceptive load on the affected limb aided by a walker. Sequential outpatient return for weight progression occurred at 2 weeks, 8 weeks, 4 months, 6 months, and 1 year postoperatively.

**Table 1** Case profile

	Mean	Standard deviation	Minimum value	Maximum value
Age (years)	35.4	±11.879	20	55
Surgical time (minutes)	221	±77.78	90	390
Days until surgery	11.067	±8.093	4	33



**Fig. 2** Appearance of the approaches used in the study. **Black arrow:** Modified Stoppa approach. **White arrow:** Ilioinguinal lateral window.

The collected data were tabulated and statistically analyzed using the Pearson correlation coefficient for normally distributed continuous variables (confirmed by the Shapiro-Wilk test;  $p$ -value > 0.05) and Kendall tau correlations for other variables for inferences.

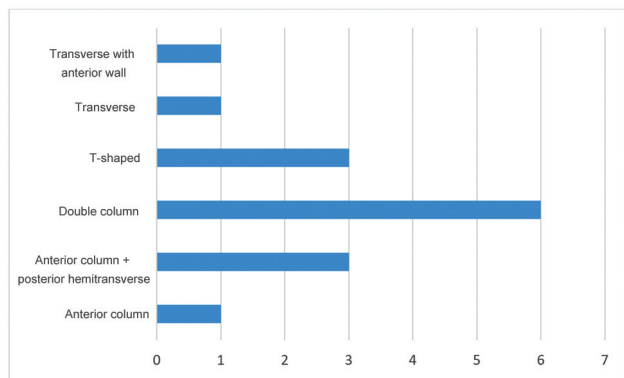
## Results

After applying the inclusion and exclusion criteria, 15 cases were analyzed, including 14 men (93.3%) and 1 woman (6.67%). ► **Table 1** shows the age, operative time, and days until surgery. ► **Fig. 3** shows the frequency of fractures according to the Letorunel and Judet<sup>2</sup> classification.

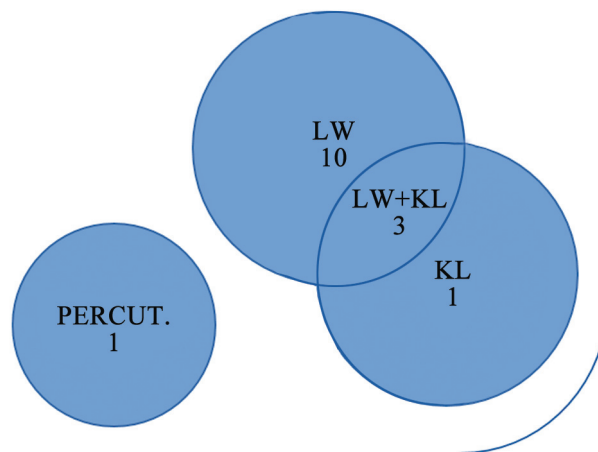
The postoperative tomographic evaluation revealed an anatomical reduction in 50%, an imperfect reduction in 13.6%, and a poor reduction in 36.4% of the subjects. Regarding the functional scores, the HHS ranged from 56 to 100, with a mean value of 92.5. The MPS classified the functional outcome as excellent in 36.5%, good in 40.6%, moderate in 18.7%, and poor in 4.2% of the cases.

The correlation regarding time from admission to definitive surgery and reduction quality was statistically significant. The MPS and HHS positively correlated with reduction quality (► **Table 2**).

Of the 15 cases, some presented postoperative complications: 4 had obturator nerve praxis, and 1 had lateral



**Fig. 3** Frequency of fractures according to the Letournel classification.



**Fig. 4** Associated approaches.

cutaneous nerve praxis, which resolved during follow-up. In addition, there were four surgical site infections (one using the modified Stoppa approach, later progressing to septic arthritis), one corona mortis injury (requiring a joint approach with the service’s vascular surgery team at the same operative time), and a case of late complication with incisional hernia. Soni et al.<sup>16</sup> reported obturator nerve injury as the most frequent complication, with complete resolution in 95% of THE cases within 3 to 6 months. Among late complications, osteoarthritis was the most common. In the present series, 27.7% of the patients presented obturator nerve praxis, all resolving completely during the 1-year follow-up.

In total, 13 out of the 15 cases required a lateral window, and 4, a Kocher-Langenbeck approach (including 3 associated with a lateral window). One case used a percutaneous approach (►Fig. 4). Most studies reported treatment with a single Stoppa approach in most cases. Guo et al.<sup>8</sup> used a single Stoppa approach in 59% of the patients and the Stoppa plus the posterior Kocher Langenbeck approach in 40% of the patients.

The estimated procedural average bleeding was of 1,411 mL (range: 400 mL to 3,525 mL), consistent with the average value of 1,376 mL reported by Laflamme et al.<sup>17</sup> Six cases required an intraoperative blood transfusion, and one patient received a postoperative transfusion. There were no severe hemorrhage-related complications in the present case series.

Finally, eight cases presented associated injuries, including three non-orthopedic injuries (aortic injury, epidural hematoma, and tension hemothorax). Orthopedic injuries to the upper limbs were more frequent and observed in five cases.

Surgery time and intraoperative bleeding presented a positive correlation (Pearson  $r = 0.712$ ;  $p = 0.003$ ; 95% confidence interval [95%CI] = 0.314 to 0.897). There was no correlation between surgery and reduction quality (Kendall  $\tau$ ;  $p = 0.283$ ) (►Table 2) or time until surgery (Kendall  $\tau$ ;  $p = 0.126$ ). However, longer times until surgery had a statistical significance with lower reduction quality ( $p = 0.007$ ). The MPS and HHS correlated with the reduction quality (Kendall  $\tau$ ;  $p < 0.006$  for both scores).

**Table 2** Kendall correlations

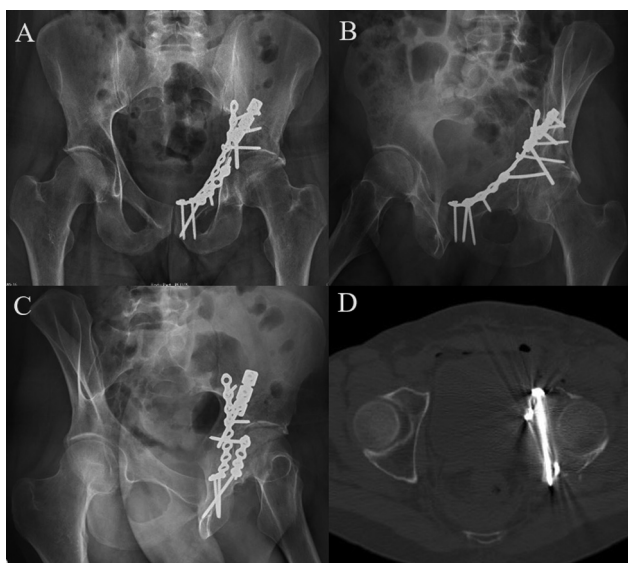
	Kendall $\tau$ -B	<i>p</i>
Time until surgery versus surgical time	0.311	0.126
Surgical time versus reduction quality	0.241	0.283
HHS versus MPS (1 year)	0.404	0.036
Reduction quality versus HHS	-0.602	0.006
Reduction quality versus MPS	-0.577	0.006
Reduction quality versus time until surgery	0.544	0.007

Abbreviations: HHS, Harris Hip Score; MPS, Majeed Pelvic Score.

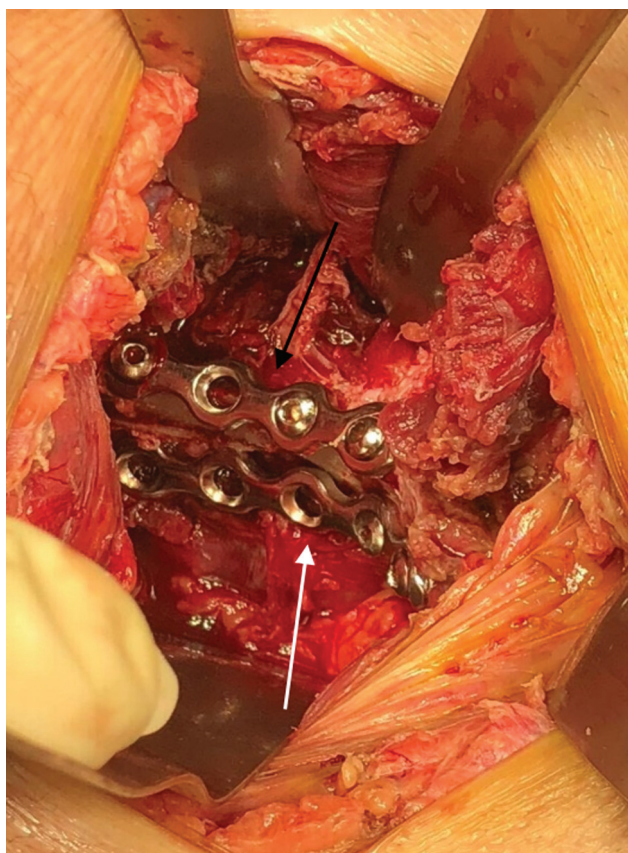
### Discussion

The modified Stoppa approach enabled a good attack angle for maneuvers to reduce the quadrilateral blade and fixation (►Fig. 5) either with interfragmentary screws or anti-shear plates. (►Fig. 6). Lateral femoral traction also helps fracture reduction with this approach, and a Schanz pin in the femoral neck decreases pressure on the blade and enables its reduction.

The present study had a relatively low number of cases using exclusively the Stoppa approach. The lateral window of



**Fig. 5** (A) Postoperative AP radiograph. (B) Postoperative oblique obturator radiograph. (C) Postoperative alar radiograph. (D) Axial section of the postoperative computed tomography scan demonstrating the angle of attack and positioning of the interfragmentary screw fixing the anterior column to the posterior column.



**Fig. 6** Intraoperative appearance. **Black arrow:** Suprapectineal plate. **White arrow:** Infrapectineal plate.

the associated ilioinguinal approach seems a good concomitant option. The increasing learning curve will probably result in lower use of the posterior Kocher-Langenbeck approach at the same time, since studies with larger samples

present a lower percentage of concomitant use of this route with the modified Stoppa approach.

We believe that maintaining the integrity of the inguinal canal results in lower rates of dissection of soft tissues and, consequently, a lower chance of infection. The time between trauma and the definitive surgical approach is a significant factor because fractures older than 15 days tend to present lower levels of mobilization and, as a result, difficult reduction. Sometimes, these injuries require more than two approaches, with increased surgical time and worse functional outcomes.

## Conclusion

We concluded that the modified Stoppa approach provided good functional and clinical outcomes, demonstrated by an average HHS of 92.5 and 77.1% of excellent or good results on the MPS. The case series study demonstrated positive statistical relevance between the reduction quality and functional outcomes and between the time until surgery and the reduction quality. At the one-year follow-up, this approach can be an excellent alternative for anterior acetabular fractures.

## Financial Support

The authors declare that they did not receive funding from agencies in the public, private, or not-for-profit sectors for the conduction of the present study.

## Conflict of Interests

The authors have no conflict of interests to declare.

## References

- Judet R, Judet J, Letournel E. Fractures of the acetabulum: classification and surgical approaches for open reduction. preliminary report. *J Bone Joint Surg Am* 1964;46:1615–1646
- Letournel E, Judet R. *Fractures of the Acetabulum*. 2nd ed. New York, NY: Springer-Verlag; 1993
- Matta JM. Fractures of the acetabulum: accuracy of reduction and clinical results in patients managed operatively within three weeks after the injury. *J Bone Joint Surg Am* 1996;78(11):1632–1645
- Kilinc CY, Acan AE, Gultac E, Kilinc RM, Hapa O, Aydogan NH. Treatment results for acetabulum fractures using the modified Stoppa approach. *Acta Orthop Traumatol Turc* 2019;53(01):6–14
- Liu Y, Yang H, Li X, Yang SH, Lin JH. Newly modified Stoppa approach for acetabular fractures. *Int Orthop* 2013;37(07):1347–1353
- Yao S, Chen K, Ji Y, et al. Supra-ilioinguinal versus modified Stoppa approach in the treatment of acetabular fractures: reduction quality and early clinical results of a retrospective study. *J Orthop Surg Res* 2019;14(01):364
- Meena S, Sharma PK, Mittal S, Sharma J, Chowdhury B. Modified Stoppa Approach versus Ilioinguinal Approach for Anterior Acetabular Fractures; A Systematic Review and Meta-Analysis. *Bull Emerg Trauma* 2017;5(01):6–12
- Guo HZ, He YF, He WQ. Modified stoppa approach for pelvic and acetabular fracture treatment. *Acta Ortop Bras* 2019;27(04):216–219
- Cole JD, Bolhofner BR. Acetabular fracture fixation via a modified Stoppa limited intrapelvic approach. Description of operative technique and preliminary treatment results. *Clin Orthop Relat Res* 1994;(305):112–123

- 10 Hirvensalo E, Lindahl J, Böstman O. A new approach to the internal fixation of unstable pelvic fractures. *Clin Orthop Relat Res* 1993;(297):28–32
- 11 Balbachevsky D, Pires R, Faloppa F, Reis F. Tratamento das fraturas da pelve e acetábulo pela via de Stoppa modificada. *Acta Ortop Bras* 2006;14(04):190–192
- 12 Isaacson MJ, Taylor BC, French BG, Poka A. Treatment of acetabulum fractures through the modified Stoppa approach: strategies and outcomes. *Clin Orthop Relat Res* 2014;472(11):3345–3352
- 13 Wang XJ, Lu Li, Zhang ZH, et al. Iliioinguinal approach versus Stoppa approach for open reduction and internal fixation in the treatment of displaced acetabular fractures: A systematic review and meta-analysis. *Chin J Traumatol* 2017;20(04):229–234
- 14 Stoppa RE, Rives JL, Warlaumont CR, Palot JP, Verhaeghe PJ, Delattre JF. The use of Dacron in the repair of hernias of the groin. *Surg Clin North Am* 1984;64(02):269–285
- 15 Letournel E. Acetabulum fractures: classification and management. *Clin Orthop Relat Res* 1980;(151):81–106
- 16 Soni A, Gupta R, Sen R. Modified Stoppa Approach for Acetabulum Fracture: A Review. *Rev Bras Ortop* 2019;54(02):109–117
- 17 Laflamme GY, Hebert-Davies J, Rouleau D, Benoit B, Leduc S. Internal fixation of osteopenic acetabular fractures involving the quadrilateral plate. *Injury* 2011;42(10):1130–1134