

## Parametric adjustment of a junction triangle in terms of the precise construction of haulage drives in underground mines

Nivelamento indireito do triângulo de conexão em função de escolha de vias ótimas de transporte em minas subterrâneas

Aleksandar Ganic

Associate Professor  
University of Belgrade, Faculty of  
Mining and Geology  
E-mail: aganic@rgf.bg.ac.rs

Ivica Ristic

Associate Professor  
University of Belgrade, Faculty of  
Mining and Geology  
E-mail: ivica@rgf.bg.ac.rs  
E-mail: ivica\_ris@yahoo.com

Dragan Djordjevic

Professor  
University of Belgrade, Faculty of  
Mining and Geology  
E-mail: dragand@rgf.bg.ac.rs

Milivoj Vulic

Associate Professor  
University of Ljubljana, Faculty of  
Natural Sciences and Engineering  
E-mail: milivoj.vulic@ntf.uni-lj.si

### Resumo

Nos custos totais de exploração de matérias-primas minerais, o transporte participa com 30-60%, o número total de empregados no transporte excede 35%, enquanto o consumo total de energia para o transporte na mina é acima de 40%. Todos esses valores mostram que o transporte representa um dos processos tecnológicos mais importantes na exploração subterrânea de matérias-primas minerais e que a questão de transporte é muito importante, como na escolha do tipo de sistema de transportação, como também na sua projeção, exploração e manutenção. A eficiência do transporte, além de muitos parâmetros técnicos e tecnológicos de exploração, como também de condições mineiro-geológicas, depende, também, da escolha de vias de transporte ótimas, que, se conseguem através de conexão exata de locais subterrâneos de minas com pontos da rede mineira na superfície do terreno. A escolha de vias ótimas de transporte mineiro representa uma das tarefas mais importantes nas medições mineiras. Essa obra mostra a maneira de nivelamento indireito do triângulo de conexão em fossa através de método de nivelamento indireito.

**Palavras-chave:** Medições mineiras, transporte, conexão, triângulo de conexão, nivelamento indireito.

### Abstract

*In total costs of ore mining, haulage participates with 30-60%; the total number of workers engaged in the transportation exceeds 35%, while the participation of transportation in the total power consumption amounts to over 40%. All these values indicate that transportation is one of the most significant challenges in the underground mining of ore deposits and that haulage analysis is very important both in selecting the haulage type and its design, utilization and maintenance. In addition to various technical mining parameters, together with mining and geological conditions, haulage efficiency depends on the selection of optimal haulage drives, which can be achieved by accurately connecting the underground mine workings with mine network points on the surface of a site. The selection of the best mine haulage routes is one the most critical tasks in mine surveying. This paper shows how to adjust a junction triangle on a working level using the parametric adjustment method.*

**Keywords:** Mine surveying, underground mine haulage, junction triangle, parametric adjustment.

## 1. Introduction

Combined haulage systems (railway transport - hoisting shaft) are the most applied systems in underground mines, both in Serbia and in the nearby countries. Connecting the underground mining workings is an important part of haulage design due to the fact that all the subsequent works follow the connection results, and therefore their accuracy depends largely on the accuracy of the connecting procedure (Ristic, 2006). One of the most applied connection methods through a vertical shaft is the Weisbach or “junction triangle method” (Figure 1). The usual adjustment procedure for junction triangles is based on the conditional adjustment method.

The objective of the connecting procedure is to connect the stopes and the underground workings of a mine, or the related working level of a mine, with the site surface. More accurately, the connecting procedure determines the horizontal coordinates of the working level of the mine within the same reference system of the surface topography.

The connection through mine workings can be carried out regardless of its position in space, but the most difficult and the most complex connecting procedure is the one established through vertical workings (Vizintin et al., 2008). In such a case, two plumb lines are projected through the mine’s main shaft to represent a straight, vertical line. Therefore, the X and Y coordinates of the plumb lines in the surface will be the same as of the underground working level of the mine. By creating various geometrical figures and by measuring angular and length values, on the basis of known coordinates of the plumb lines, the coordinates of the first point and the direction angle of the first side of a future underground theodolite traverse are calculated, which is the objective of connecting.

## 2. Connecting by the junction triangle method

In connecting main mine galleries through one vertical shaft, the Weisbach method is mostly used, which is also

known as the Junction triangle method. Vertical plumb lines in the shaft with the given point beside the shaft on the surface of the site, and with an unknown point on the mine level form two linked triangles having one common side - the side between the plumb lines. In these triangles, all of the three sides and the angle against the side between the plumb lines are measured, and it is a common practice that, due to a lower impact of errors of length measuring, the triangles are oblique ( $\alpha < 20^\circ$ ;  $\beta > 160^\circ$ ) (Borshch-Komponiets et al., 1989). When dealing with oblique triangles like the latter, the unknown angles  $\alpha$  and  $\beta$  are calculated by applying the *Sinus theorem*. Four values are measured in each triangle, i.e. one more measurement per each triangle is available, which enables the measurement results to be included in the process of strict adjustment. However, most technical journals tend to emphasize the adjustment of non-oblong junction triangles. The reason for the “non-adjustment” of oblong junction triangles is because the measurements carried out therein are more accurate, and therefore there are no significant differences between the approximate and adjusted coordinates of the points on the working mine level. Hence, the adjustment process becomes more complex, and more comprehensive, requiring longer measurements which may increase the possibility of errors. However, if these were compelling arguments once, now such a concept is completely surpassed (Ganic & Djordjevic, 1999).

The adjustment of junction triangles is currently carried out via the conditional adjustment method, where, because of one redundant measurement per triangle, there is one conditional equation for each triangle, both on the site surface and on the working mine level. However, professional papers have never presented this possibility and the application of the parametric adjustment of a junction triangle on a working mine level. Parametric and conditional adjustment are based on the total least-squares method (Golub & Van Loan, 1996). For this reason, these two ways of calculation will give the same final results (Blaha, 1984). Nevertheless, due to its advantages, the parametric adjustments is applied more frequently than the conditional adjustment.

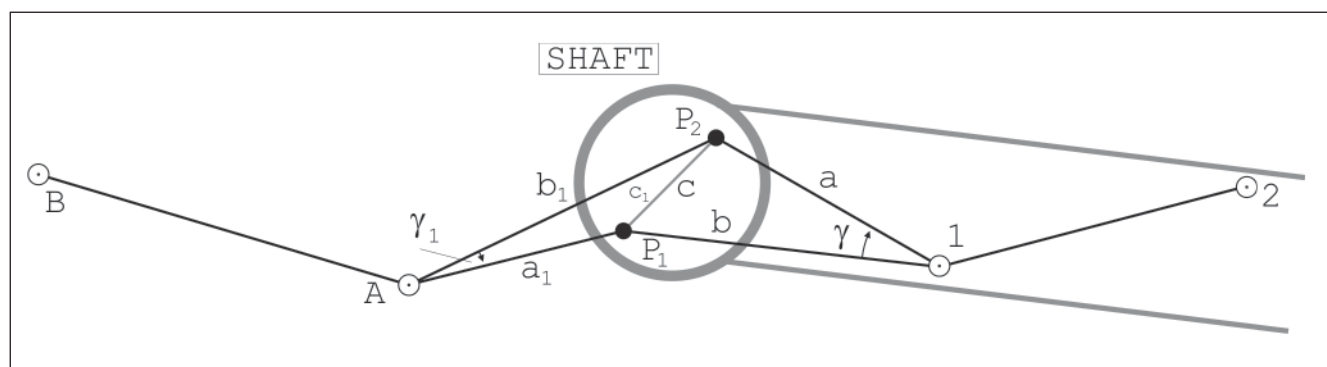


Figure 1 - Connecting procedure by the Weisbach method (junction triangle method).

### 3. Parametric adjustment of a junction triangle

The parametric adjustment has been applied to a junction triangle taking into account measurements on a working mine level, as follows:

- 3 measured horizontal directions from an unknown point  $I$  ( $\alpha_1, \alpha_2, \alpha_3$ ).
- 3 measured horizontal lengths from point  $I$  towards an unknown point 2 on the working mine level ( $d_1$ ) and towards plumb lines ( $d_2, d_3$ ). The length between the plumb lines on the working mine level is measured for the purpose of the known measurement accuracy control ( $|c - c_m| \leq 3mm$ ), but it is not included in the adjustment process.

The given adjustment data are the coordinates of the plumb lines  $P_1$  and  $P_2$ , calculated on the basis of the measurements on the surface of the site. It is also necessary to determine the approximate coordinates of the unknown points 1 and 2 on the working mine level.

In the parametric adjustment of working mine level measurements, there are six measured values available, and five unknown values, namely:  $Y$  and  $X$  coordinates of the points 1 and 2 and the definite angle for the orientation of the observed horizontal directions from point 1 (Hu & Tang, 2001).

In the parametric adjustment, it is necessary to establish functional connections among measured values and unknown variables, based on which residual equations are created (Aleksic, 1990; Strang & Borre, 1997, Fan & Yao, 2005). The residual equations are then converted into standard equations, which are solved in increments, resulting in this case on the coordinates of the unknown points 1 and 2 on the working mine level.

#### 3.1 Residual equations for the measured horizontal directions

The functional relation for the measured horizontal directions is as follows:

$$\alpha_{si} + v_{\alpha_{si}} = v_{si} + z_s \quad (1)$$

Where:

$\alpha_{si}$  - Measured horizontal directions from the station  $S$  towards the points 1, 2, ...  $i$ .

$v_{\alpha_{si}}$  - Residuals of the corresponding horizontal directions.

$v_{si}$  - Direction angles from the point  $S$  towards the points 1, 2, ...  $i$ .

$z_s$  - Angle for the orientation of horizontal directions measured from the station  $S$ .

If the unknown direction angles and the orientation angle are expressed through approximate values and corresponding increments such as:

$$v_{si} = n_{si} + \delta v_{si} \quad (2)$$

$$z_s = z_s^\circ + \delta z_s \quad (3)$$

Then, the approximate values of the unknowns are calculated according to the following equations:

$$n_{si} = \arctan \frac{Y_i^\circ - Y_s^\circ}{X_i^\circ - X_s^\circ} \quad (4)$$

$$z_s^\circ = \alpha_{si} - n_{si} \quad (5)$$

Equation (1) can also be expressed as:

$$\alpha_{si} + v_{\alpha_{si}} = \arctan \frac{Y_i^\circ - Y_s^\circ}{X_i^\circ - X_s^\circ} + \delta v_{si} + z_s^\circ + \delta z_s = F(X_s^\circ, Y_s^\circ, z_s^\circ, X_i^\circ, Y_i^\circ) \quad (6)$$

By linearization of (6), we obtain:

$$v_{\alpha_{si}} = \frac{\partial F}{\partial X_s^\circ} \delta X_s + \frac{\partial F}{\partial Y_s^\circ} \delta Y_s + \frac{\partial F}{\partial X_i^\circ} \delta X_i + \frac{\partial F}{\partial Y_i^\circ} \delta Y_i + \frac{\partial F}{\partial z_s^\circ} \delta z_s + f_{\alpha_{si}} \quad (7)$$

That is, the final residual equations are in the form of:

$$v_{\alpha_{si}} = a_{si} \delta X_s + b_{si} \delta Y_s + a_{is} \delta X_i + b_{is} \delta Y_i + c_s \delta z_s + f_{\alpha_{si}} \quad (8)$$

Where the coefficients are:

$$a_{si} = \frac{\partial F}{\partial X_s^\circ} = \frac{\sin n_{si}}{s_{si}} \cdot \rho'' \quad a_{is} = \frac{\partial F}{\partial X_i^\circ} = -a_{si}$$

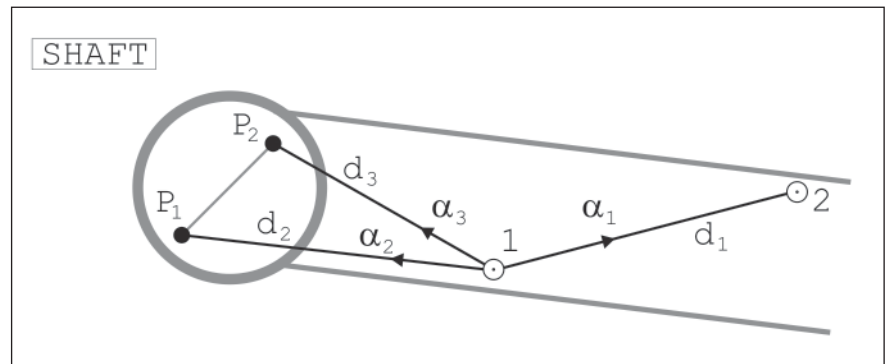


Figure 2 - Measured values in a junction triangle on a working mine level.

$$b_{si} = \frac{\partial F}{\partial Y_s^\circ} = -\frac{\cos n_{si}}{s_{si}^\circ} \cdot \rho'' \quad b_{is} = \frac{\partial F}{\partial Y_i^\circ} = -b_{si}$$

$$c_s = \frac{\partial F}{\partial z_s^\circ} = +1$$

And the free elements are:

$$f_{\alpha_{si}} = n_{si} + z_s^\circ - \alpha_{si}$$

The final set of equations (8) refers to horizontal directions perceived between two unknown points. For directions perceived from an unknown point towards the given points, the increments are as follows:

$$\delta X_i = 0; \delta Y_i = 0$$

So the residual equations are:

$$v_{\alpha_{si}} = a_{si} \delta X_s + b_{si} \delta Y_s + c_s \delta z_s + f_{si} \quad (9)$$

### 3.2 Residual equations for measured horizontal lengths

The functional relation for measured horizontal lengths is as follows:

$$d_{si} + v_{d_{si}} = d_{si}' \quad (10)$$

Where:

$d_{si}$  - Measured horizontal lengths between the point  $S$  and points  $I, 2, \dots, i$ ;

$v_{d_{si}}$  - Residuals of corresponding horizontal lengths;

$d_{si}'$  - Adjusted values of horizontal lengths.

If in equation (10), the most probable length values are replaced by approximate values and their corresponding increments, this equation becomes:

$$d_{si} + v_{d_{si}} = d_{si}^\circ + \delta d_{si} \quad (11)$$

Whereby the approximate lengths are calculated on the basis of approximate coordinates of the points, according to the equation:

$$d_{li}^\circ = \sqrt{(Y_i^\circ - Y_l^\circ)^2 + (X_i^\circ - X_l^\circ)^2} \quad (12)$$

Therefore, equation (11), becomes:

$$d_{si} + v_{d_{si}} = \sqrt{(Y_i^\circ - Y_s^\circ)^2 + (X_i^\circ - X_s^\circ)^2} + \delta d_{si} = F(X_s^\circ, Y_s^\circ, X_i^\circ, Y_i^\circ) \quad (13)$$

By linearization of the equation (13):

$$v_{d_{si}} = \frac{\partial F}{\partial X_s^\circ} \delta X_s + \frac{\partial F}{\partial Y_s^\circ} \delta Y_s + \frac{\partial F}{\partial X_i^\circ} \delta X_i + \frac{\partial F}{\partial Y_i^\circ} \delta Y_i + f_{d_{si}} \quad (14)$$

We obtain the final residual equations for the measured horizontal lengths:

$$v_{d_{si}} = A_{si} \delta X_s + B_{si} \delta Y_s + A_{is} \delta X_i + B_{is} \delta Y_i + f_{d_{si}} \quad (15)$$

Where the coefficients are:

$$A_{si} = \frac{\partial F}{\partial X_s^\circ} = -\cos n_{si} \quad A_{is} = \frac{\partial F}{\partial X_i^\circ} = -A_{si}$$

$$B_{si} = \frac{\partial F}{\partial Y_s^\circ} = -\sin n_{si} \quad B_{is} = \frac{\partial F}{\partial Y_i^\circ} = -B_{si}$$

And the free elements are:

$$f_{d_{si}} = d_{si}^\circ - d_{si}$$

The same applies to final residual equations for measured directions; equation (15) refers to the measured lengths between an unknown point and the given ones and the final residual equations are in the following form:

$$v_{d_{si}} = A_{si} \delta X_s + B_{si} \delta Y_s + f_{d_{si}} \quad (16)$$

### 3.3 Final residual equations for the parametric adjustment of a junction triangle in a working mine level

Taking into account Figure 2 and the equations (8), (9), (15) and (16), the residual equations in the parametric adjustment of measurements in a junction triangle on a working mine level are as follows:

$$\begin{aligned} v_{\alpha_1} &= a_{1,2} \delta X_1 + b_{1,2} \delta Y_1 + a_{2,1} \delta X_2 + b_{2,1} \delta Y_2 + \delta z_1 + (z_1^\circ + n_{1,2} - \alpha_1) \\ v_{\alpha_2} &= a_{1,v_1} \delta X_1 + b_{1,v_1} \delta Y_1 + \delta z_1 + (z_1^\circ + n_{1,v_1} - \alpha_2) \\ v_{\alpha_3} &= a_{1,v_2} \delta X_1 + b_{1,v_2} \delta Y_1 + \delta z_1 + (z_1^\circ + n_{1,v_2} - \alpha_3) \\ v_{d_1} &= A_{1,2} \delta X_1 + B_{1,2} \delta Y_1 + A_{2,1} \delta X_2 + B_{2,1} \delta Y_2 + (d_{1,2}^\circ - d_{1,2}) \\ v_{d_2} &= A_{1,v_1} \delta X_1 + B_{1,v_1} \delta Y_1 + (d_{1,v_1}^\circ - d_{1,v_1}) \\ v_{d_3} &= A_{1,v_2} \delta X_1 + B_{1,v_2} \delta Y_1 + (d_{1,v_2}^\circ - d_{1,v_2}) \end{aligned} \quad (17)$$

In accordance with the final set of residual equations (17), the coefficient matrix of error equations, the free element vector, and the weight matrix, based on standard deviations to the measured directions and lengths are created. Then, the parametric adjustment is carried out according to the known equations, whereby both the coordinates and their increments of the unknown points on the working mine level are obtained according to the equations:

$$Y_1 = Y_1^\circ + \delta Y_1; \quad X_1 = X_1^\circ + \delta X_1 \quad Y_2 = Y_2^\circ + \delta Y_2; \quad X_2 = X_2^\circ + \delta X_2 \quad (18)$$

This solution properly addresses the issue of the parametric adjustment of a junction triangle on the working mine level.

## 4. Connecting a haulage gallery in the coal mine Soko by applying the parametric adjustment of a junction triangle

Soko's Brown Coal Mine has one haulage shaft and one ventilation shaft, both 160 m deep. Mine development has been carried out through a series of slopes and horizontal galleries. The haulage shaft was subsequently deepened for another 100m, taking its total depth to 260m. New drives were also constructed (GTN-1 and GTN-2) to enable access to the Eastern limb of the Central field. The mining method in the Soko Mine is a variant of the room-and-pillar method, with the construction of level drives alongside the seam, with roof coal slicing in retreat. Production is carried out simultaneously through two level drives.

Figures 3, 4 and 5 show geological cross sections through the main underground workings of the Central Field Eastern Limb, in Soko's Brown Coal Mine.

The solution of opening the Eastern Limb of the Central Field is based on the division of a mineable deposit into two levels. The first level is located at elevation -44m to provide working access to the Western and Central fields above such elevation. The second level is projected at elevation -150m in order to provide access to the Central field between the first and the second levels. The opening of the -44m level was envisaged to be carried out in two stages. The first stage includes the construction of the main access from the surface to the bottom of the haulage shaft as well as ventilation, haulage and other operating conditions necessary for the continuation of works. The general layout of the working drives of such arrangement is shown in Figure 6.

The connection of the working drives shown in Figure 6 has been carried out using the junction triangle method. Two plumb-bobs, with horizontal coordinates defined by the intersections, were suspended from the surface down to one of the haulage drives. The following measurements were taken within the haulage drive:

- Three sets of angular measurements by theodolite Wild T2.
- Ten repetitions of length measurements by a precise steel band.

The proposed procedure for the parametric adjustment of the junction triangle is:

- Coordinates of the plumb lines  $P_1$  and  $P_2$  obtained on the basis of the measurements on the surface:

$$\begin{aligned} Y_{P_1} &= 660.3738m & X_{P_1} &= 812.7780m \\ Y_{P_2} &= 662.6494m & X_{P_2} &= 812.6890m \end{aligned}$$

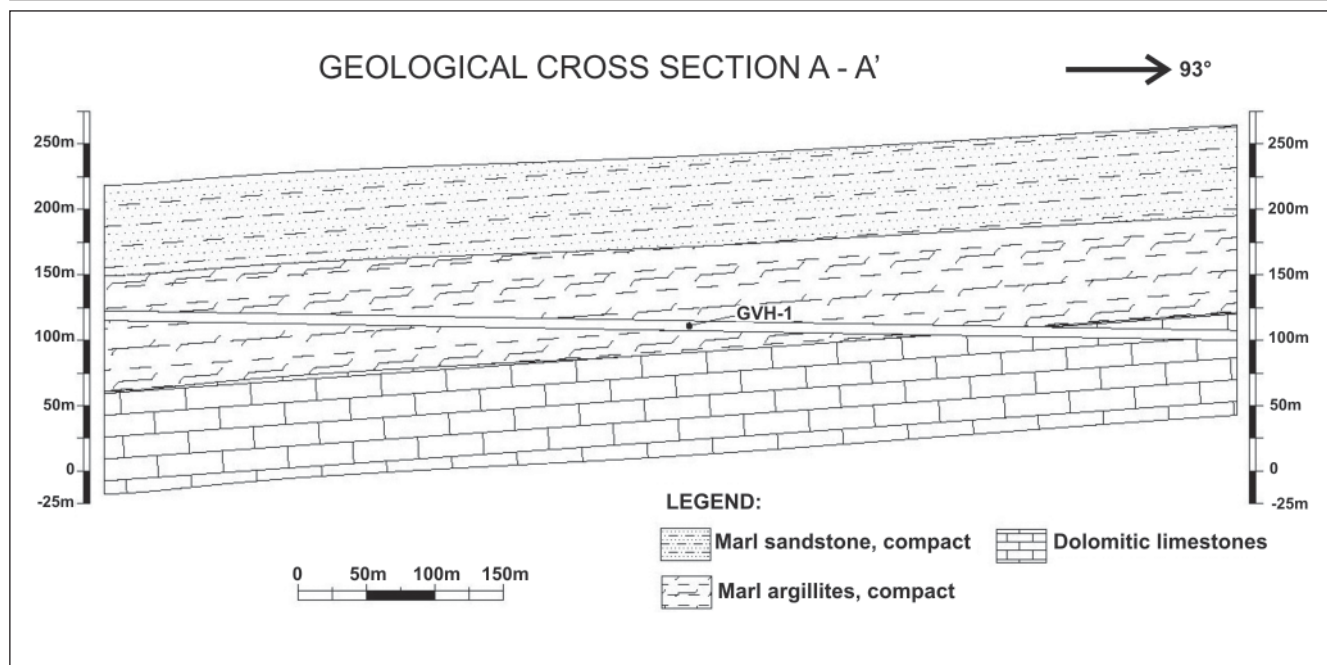


Figure 3 - Geological cross section longitudinal to drive GVH-1.

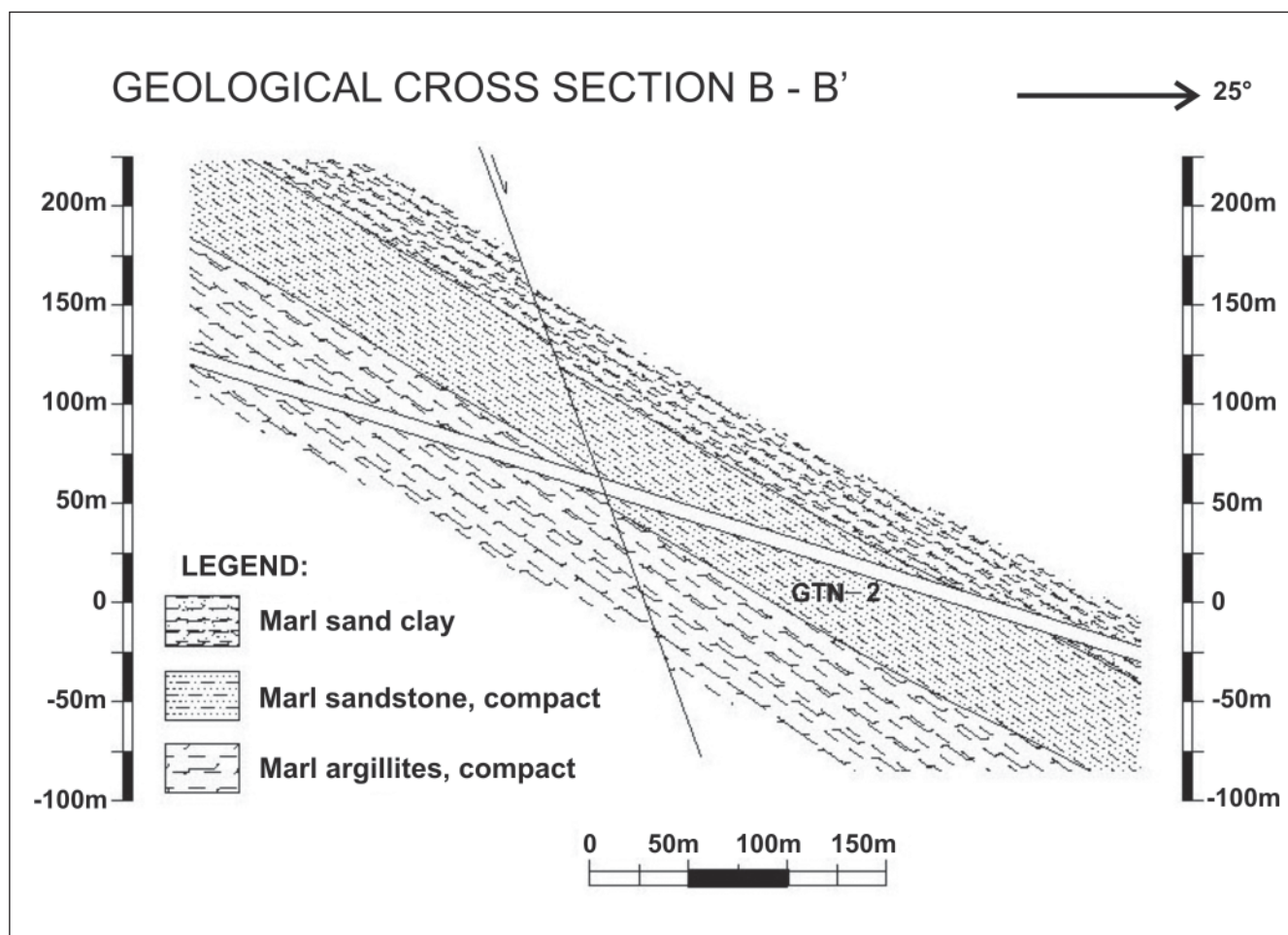


Figure 4 - Geological cross section longitudinal to drive GTN-2.

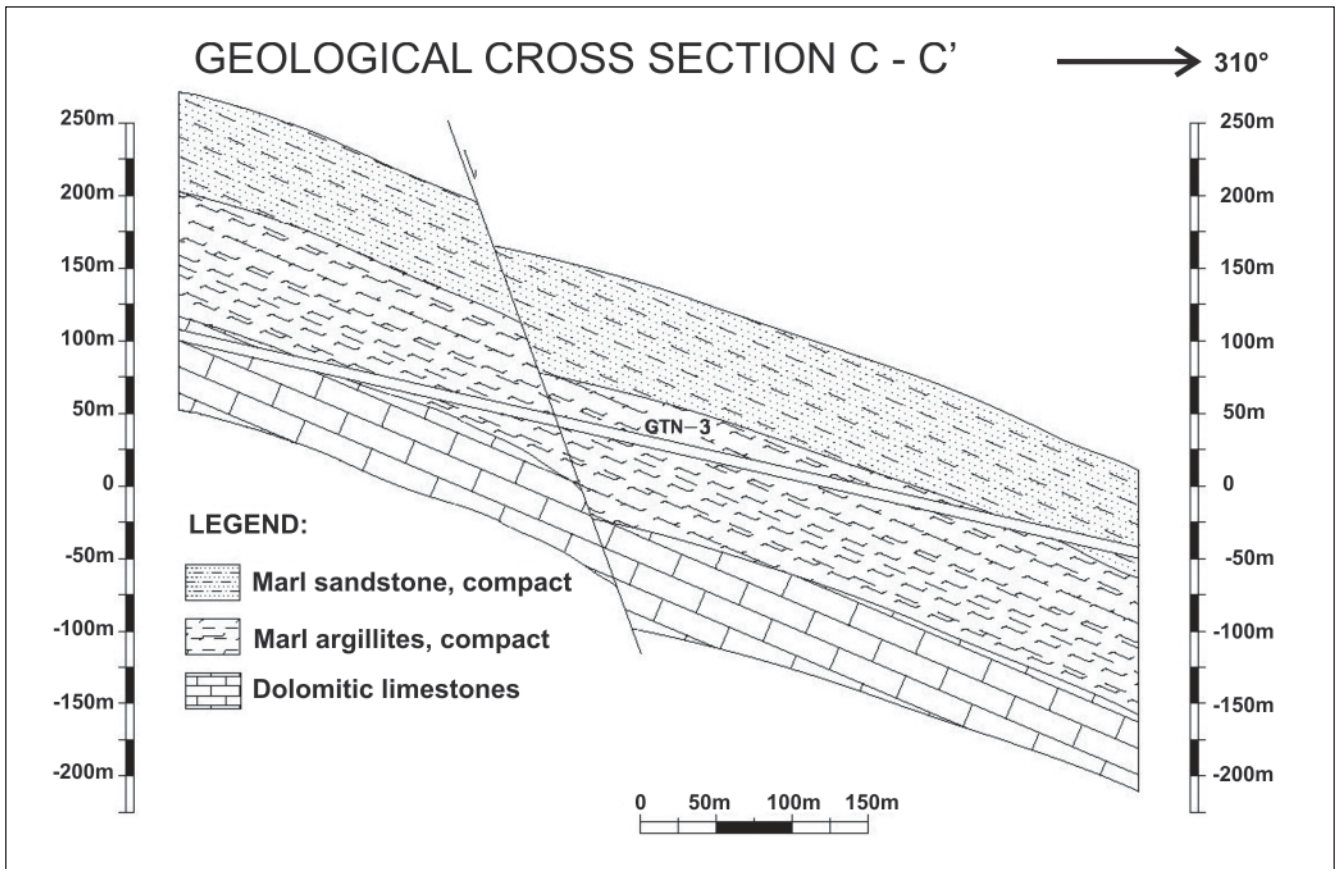


Figure 5 - Geological cross section longitudinal to drive GTN-3.

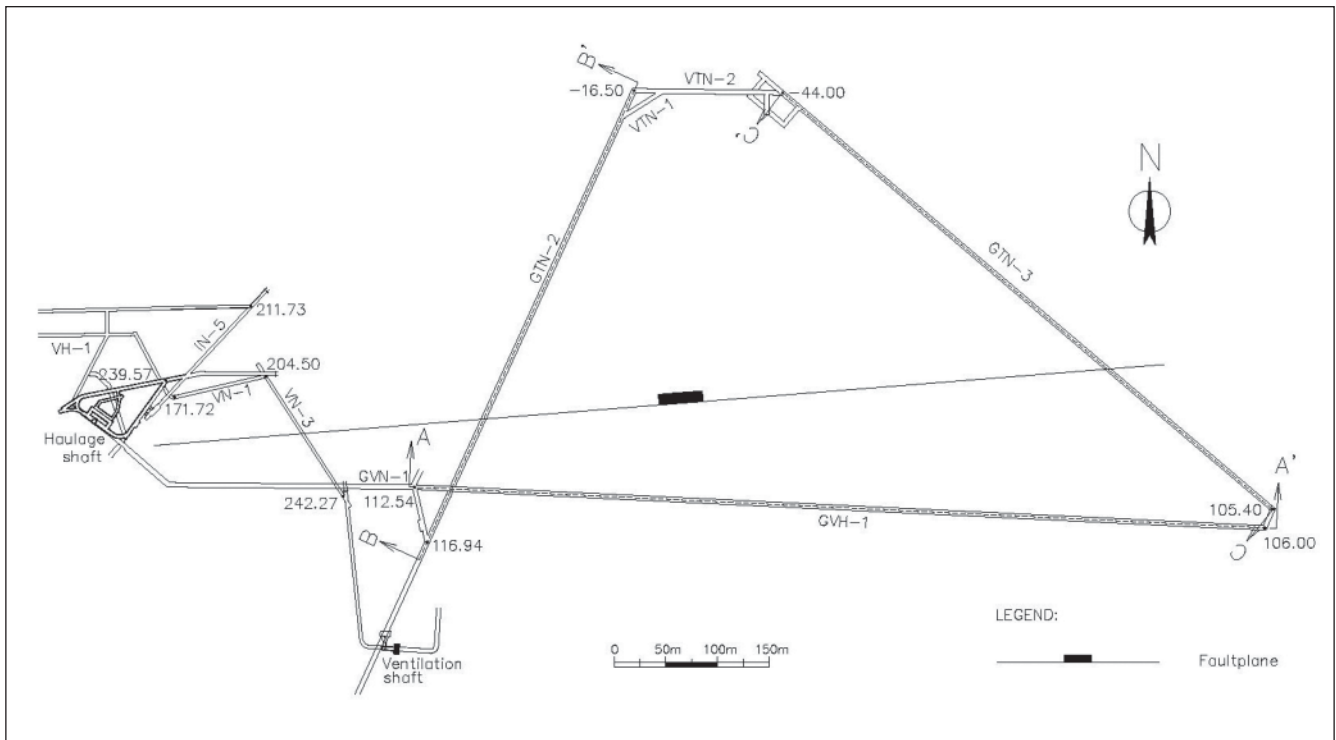


Figure 6 - General layout of the working drives of the Central field's -44m level.

**Table 1** - Results of measurements of horizontal directions and lengths.

Horizontal directions						Horizontal lengths			
Station	Sight	°	'	"		from	to	[m]	
1	2	0	0	00.0	$\alpha_1$	1	2	18.2560	$d_1$
	P <sub>1</sub>	214	22	49.3	$\alpha_2$	1	P <sub>1</sub>	6.9189	$d_2$
	P <sub>2</sub>	215	31	41.5	$\alpha_3$	1	P <sub>2</sub>	4.6474	$d_3$

**Table 2** - Coefficients and free elements of the final residual equations.

s	i	n <sub>si</sub>			d <sub>si</sub> [m]	a <sub>si</sub>	b <sub>si</sub>	f <sub>α</sub> ["]
1	2	60°	12'	13.4"	18.2566	9.8045	-5.6142	0
1	P <sub>1</sub>	274°	34'	57.7"	6.9213	-29.7061	-2.3811	-5.02
1	P <sub>2</sub>	275°	43'	50.6"	4.6468	-44.1665	-4.4323	-4.38
						A <sub>si</sub>	B <sub>si</sub>	f <sub>d</sub> [mm]
1	2					-0.4969	-0.8678	+0.56
1	P <sub>1</sub>					-0.0799	+0.9968	+2.43
1	P <sub>2</sub>					-0.0999	+0.9950	-0.58

- Approximate coordinates of the points 1 and 2 in the haulage drive:

$$Y_1^\circ = 667.2730m \quad X_1^\circ = 812.2250m$$

$$Y_2^\circ = 683.1160m \quad X_2^\circ = 821.2970m$$

- Results of measurements of horizontal directions and lengths in the haulage drive (Table 1).
- Standard deviations to the measured values:

$$\sigma_\alpha = 5'' \quad \sigma_d = 0.5mm$$

Based on the parametric adjustment procedure, coefficients and free elements of the final residual equations are calculated according to equations (8) and (15) (Table 2).

Therefore according to the set of equations (17), the coefficient matrix of the residual equations will be:

$$A = \begin{bmatrix} +9.8045 & -5.6142 & +1 & -9.8045 & +5.6142 \\ -29.7061 & -2.3811 & +1 & 0 & 0 \\ -44.1665 & -4.4323 & +1 & 0 & 0 \\ -0.4969 & -0.8678 & 0 & +0.4969 & +0.8678 \\ -0.0799 & +0.9968 & 0 & 0 & 0 \\ -0.0999 & +0.9950 & 0 & 0 & 0 \end{bmatrix}$$

Free element vector:  $f^T = [0 \quad -5.02 \quad -4.38 \quad +0.56 \quad +2.43 \quad -0.58]$

As well as the weight matrix:  $P_{dijag} = [1 \quad 1 \quad 1 \quad 100 \quad 100 \quad 100]$



By applying the corresponding matrix operations, an inverse coefficient matrix of standard equations is obtained:

$$N^{-1} = \begin{bmatrix} +0.0094 & +0.0001 & +0.3485 & +0.0362 & -0.0152 \\ +0.0001 & +0.0050 & +0.0223 & +0.0019 & +0.0040 \\ +0.3485 & +0.0223 & +13.4478 & +1.3814 & -0.5691 \\ +0.0362 & +0.0019 & +1.3814 & +0.1507 & -0.0580 \\ -0.0152 & +0.0040 & -0.5691 & -0.0580 & +0.0385 \end{bmatrix}$$

Where:  $N = A^T \cdot P \cdot A$

As well as the free element vector:

$$n^T = (A^T \cdot P \cdot f)^T = [+301.2832 \quad +167.7458 \quad -9.4006 \quad +27.6232 \quad +48.2401]$$

Based on the coefficient matrix and free element vector, the increment vector is obtained:

$$x^T = -(N^{-1} \cdot n)^T = [+0.146\text{mm} \quad -0.915\text{mm} \quad +6.976'' \quad +0.406\text{mm} \quad -1.705\text{mm}]$$

The most probable values of the coordinates of unknown points in the haulage drive obtained by the parametric adjustment will be:

$$Y_1 = 667.2730\text{m} - 0.9\text{mm} = 667.2721\text{m} \quad X_1 = 812.2250\text{m} + 0.1\text{mm} = 812.2251\text{m}$$

$$Y_2 = 683.1160\text{m} - 1.7\text{mm} = 683.1143\text{m} \quad X_2 = 821.2970\text{m} + 0.4\text{mm} = 821.2974\text{m}$$

The transposed residual vector for the measurement results will be:

$$v^T = [0 \quad -0,21'' \quad +0,21'' \quad 0 \quad +1,50\text{mm} \quad -1,50\text{mm}]$$

And the most probable values of the measured values in the haulage drive will be in Table 3.

The standard deviations to the coordinates of the unknown points in the haulage drive are:

$$\sigma_{y1} = 1.50\text{mm} \quad \sigma_{x1} = 2.06\text{mm}$$

$$\sigma_{y2} = 4.17\text{mm} \quad \sigma_{x2} = 8.25\text{mm}$$

For the purposes of control, a conditional adjustment of the junction triangle was also carried out, with the same parameters ( $P_1P_2 = 2.2773\text{m}$ ) and the following adjusted values:

- Angle between plumb lines  $\gamma = 1^\circ 08' 52.3''$  (the difference between the value obtained by the parametric adjustment and the conditional one is  $\Delta = |0.3''|$ ).

- Side distance between the plumb line  $P_1$  and the point  $I$  in the haulage drive  $d_2 = 6.9199\text{m}$  ( $\Delta = |0.5\text{mm}|$ ).
- Side distance between the plumb line  $P_2$  and the point  $I$  in the haulage drive  $d_3 = 4.6464\text{m}$  ( $\Delta = |0.4\text{mm}|$ ).

The coordinates of points  $I$  and  $2$  in the haulage drive are calculated in the draft of traverse, on the basis of conditionally adjusted measurements as follows:

$$Y_1 = 667.2716\text{m}$$

$$X_1 = 812.2250\text{m}$$

$$Y_2 = 683.1140\text{m}$$

$$X_2 = 821.2969\text{m}$$

And, as it was expected, these coordinates differ only slightly from the coordinates obtained by the parametric adjustment.

## 5. Conclusion

The parametric adjustment is a strict adjustment method based on the least-squares method. As such, the parametric adjustment, if well performed, will give the same results as any other adjustment based on the least-square method. In comparison with other strict adjustment methods, the parametric adjustment has several advantages of which the most important are: direct calculation of unknown coordinates and an indirect assessment of the accuracy of the measurements performed and the coordinate calculations.

There are a number of commercial geodetic softwares in the market which

**Table 3** - The most probable values of measurements.

Horizontal directions						Horizontal lengths			
Station	Sight	°	'	''		from	to	[m]	
1	2	0	0	00.0	$\alpha_1'$	1	2	18.2560	$d_1'$
	$P_1$	214	22	49.1	$\alpha_2'$	1	$P_1$	6.9204	$d_2'$
	$P_2$	215	31	41.7	$\alpha_3'$	1	$P_2$	4.6459	$d_3'$

are also applied in underground mines in performing different tasks. The fact is that all softwares will give the same final results, if they are based on adjustment according to the least-squares method. However, end users are not familiar with the algorithm according to which the software is realized, that is, the unknown is the applied adjustment method according to which calculations are made.

The procedure shown in the paper enables a simple, but efficient verification method for commercial softwares and their determining method, if the calculations were made according to the least-squares method and if the obtained results are the most probable values of unknown variables. The verification of the procedure was made by comparing results obtained by the conditional adjustment method, on the example of the haulage drive connection in the coal mine Soko.

Thus the experts can, in practice, organize a measurement program in a

simpler and better way; that is, they can achieve better results and a more efficient work, and thereby ensure lower operating costs for the company.

## 6. Bibliographic references

- ALEKSIC, I. *Geodezija 3 (Geodesy 3)*. Belgrade: Naucna knjiga, 1990. 245p.
- BLAHA, G. Tensor structure applied to the least -squares method, revisited. *Journal of Geodesy*, v.58, n.1, p.1-30, 1984
- BORSHCH-KOMPONIETS, V. et alli. *Mine Surveying*. Moscow: Mir Publishers, 1989. 365p.
- FAN, J. AND YAO, Q. *Nonlinear time series: nonparametric and parametric methods*. Springer Netherlands, p.551, 2005.
- GANIC, A. AND DJORDJEVIC, D. *Izravanje prikljucnih trouglova izduzenog oblika (Adjustment of Connected Triangles Elongated in Shape)*. Underground Mining Engineering, v.8, n.10, p.95-98, 1999.
- GOLUB, G. AND VAN LOAN, C. *Matrix Computations*. Baltimor and London: The Johns Hopkins University Press, 1996. 694p.
- HU, W.C. AND TANG, W.H. Automated least-squares adjustment of triangulation-trilateration figures. *Journal of Surveying Engineering*, v.127, i.4, p.133-142, 2001.
- RISTOVIC I. *Optimization of parameters of continuous haulage systems for underground mining of metallic and non-metallic mineral raw materials*. Belgrade: Faculty of Mining and Geology, 2006. 190p. (Doctors Thesis).
- STRANG, G. AND BORRE, K. *Linear Algebra, Geodesy and GPS*. Wellesley: Wellesley College, 1997. 624p.
- VIŽINTIN, G. et alli. Development of environmental criteria for estimation of land development using GIS. *RMZ - Materials and Geo-environment*, v.55, n.2, p.237-258, 2008.

Artigo recebido em 08/06/2009 e aprovado em 19/11/2009.

**A REM tem novo endereço:**

**FUNDAÇÃO GORCEIX - REM**

**Rua Carlos Walter Marinho Campos, 57**

**Bairro: Vila Itacolomy**

**35400-000 - Ouro Preto - MG**

**(31) 3551-4730 (31) 3559-7408**

**[www.rem.com.br](http://www.rem.com.br)**