

## Bird species diversity in the Atlantic Forest of Brazil is not explained by the Mid-domain Effect

Vagner Cavarzere & Luís Fábio Silveira

*Seção de Aves, Museu de Zoologia, Universidade de São Paulo. Avenida Nazaré 481, 04218-970 São Paulo, SP, Brazil.  
E-mail: cavarzere@usp.br; lfsilvei@usp.br*

**ABSTRACT.** The Atlantic Forest is an excellent case study for the elevational diversity of birds, and some inventories along elevational gradients have been carried out in Brazil. Since none of these studies explain the patterns of species richness with elevation, we herein review all Brazilian studies on bird elevational diversity, and test a geometric constraint null model that predicts a unimodal species-altitude curve, the Mid-domain Effect (MDE). We searched for bird inventories in the literature and also analysed our own survey data using limited-radius point counts along an 800 m elevational gradient in the state of São Paulo, Brazil. We found 10 investigations of elevational diversity of Atlantic Forest birds and identified five different elevational patterns: monotonic decreasing diversity, constant at low elevations, constant at low elevations but increasing towards the middle, and two undescribed patterns for Atlantic Forest birds, trough-shaped and increasing diversity. The average MDE fit was low ( $r^2 = 0.31$ ) and none of the MDE predictions were robust across all gradients. Those studies with good MDE model fits had obvious sampling bias. Although it has been proposed that the MDE may be positively associated with the elevational diversity of birds, it does not fit the Brazilian Atlantic Forest bird elevational diversity.

**KEY WORDS.** Altitudinal gradient; avian species richness; geometric constraints; mountain ecology; null model; rain forest.

The complex elevational diversity of birds has been investigated on every continent (GRINNELL & STORER 1924, ORIANS 1969, KIKKAWA & WILLIAMS 1971, TERBORGH 1971, LACK 1976, WARTMANN & FURRER 1977, PRIGOGINE 1980, THIOLLAY 1980, EGUCHI *et al.* 1989, GOODMAN & GONZALES 1990, THORMSTROM & WATSON 1997, NATHAN & WERNER 1999, ALIABADIAN *et al.* 2008). In the Neotropical region, the emphasis has been on Andean rainforests (TERBORGH 1971, 1977, 1985, TERBORGH & WESKE 1975, PEARSON & RALPH 1978, RAHBEK 1997, PATTERSON *et al.* 1998, HENNESSEY *et al.* 2003, KATTAN & FRANCO 2004, HERZOG *et al.* 2005, PAULSCH & MÜLLER-HOHESTEIN 2008). In Brazil, the Atlantic Forests are also an excellent case study for the elevational diversity of organisms (COLWELL *et al.* 2004), reaching the greatest altitudinal range in the coastal Serra do Mar, and in the interior Serra da Mantiqueira. While the Serra da Mantiqueira has a truncated elevational gradient, meaning that the lowest elevations are not at sea level, the Serra do Mar has continuous rainforests ranging from sea level to altitudes that may reach 2,300 m in the Serra dos Órgãos, state of Rio de Janeiro (ALMEIDA & CARNEIRO 1998).

Apart from HOLT's (1928) ornithological survey of the Serra do Itatiaia, in Rio de Janeiro, and STOTZ's *et al.* (1996) review of the elevational diversity of all birds in the Atlantic Forest, others have investigated bird elevational diversity in both mountain ranges of the Atlantic Forest (GOERCK 1999, BUZZETTI 2000, DEVELEY 2004, RAJÃO & CERQUEIRA 2006, MALLET-RODRIGUES *et al.* 2010), and at other locations within these forests (BENCKE & KINDEL 1999,

MELO-JÚNIOR *et al.* 2001). These studies neither explored the driving factors of elevational patterns, nor explicitly described the elevational patterns found. Instead, they described the elevations in which each species was recorded, thereby only developing an elevational range database, without explaining the patterns.

One of the best known species-altitude curves is unimodal. In this curve, the maximum species richness is in the middle of the elevational gradient, which is referred to as the Mid-domain Effect (COLWELL & HURTT 1994, COLWELL & LEES 2000). The Mid-domain Effect (MDE) is a null model that assumes that, due to topographical and/or geographical constraints (base and top of a mountain, for example) species ranges overlap more near the middle of an elevational gradient, where many large- to medium-sized ranges must overlap but are less likely to abut an edge of this gradient (COLWELL *et al.* 2004). On mountains, the MDE predicts 1) a unimodal diversity curve with maximum diversity at mid-elevations, 2) a strong positive association between the predicted diversity based on Monte Carlo simulations and the empirical diversity at each 100 m elevational band, 3) that deviations in maximum species richness away from the mid-point of the mountain should be distributed on random elevations of this mountain if spatial constraints alone drive elevational diversity and 4) a strong relationship between MDE fit ( $r^2$  value) and the ratio of the average bird range size to elevational gradient length. This derives from the premise that MDE predictions are based mainly

on the overlap of medium and large-ranged species, and do not apply necessarily to species with small ranges; thus gradients with more large-ranged species should show a better fit to the MDE (DUNN *et al.* 2007).

While many studies have supported the predictions of the MDE for many taxa (LIEBERMAN *et al.* 1996, RAHBK 1997, KESSLER 2000, 2001, HEANEY 2001, JETZ & RAHBK 2001, SANDERS 2002, McCAIN 2004, GARCÍA-LOPEZ *et al.* 2011), others have rejected it, partially or entirely (BOKMA & MÖNKKÖNEN 2000, BROWN 2001, KOLEFF & GASTON 2001, BOKMA *et al.* 2001, DINIZ-FILHO *et al.* 2002, HAWKINS & DINIZ-FILHO 2002, LAURIE & SILANDER 2002, ZAPATA *et al.* 2003, HERZOG *et al.* 2005, ALIABADIAN *et al.* 2008, McCAIN 2009, 2010), arguing that it assumes an a-priori distribution of species (HAWKINS & DINIZ-FILHO 2002, ZAPATA *et al.* 2003), and that some assumptions of the MDE are unrealistic, conceptually flawed, or internally inconsistent. Assessing the role and the biological basis of the MDE in nature has proven technically challenging and, because it questions the traditional view that assumes a monotonic decline of species richness with increasing altitude (STEVENS 1992), it has also proven controversial (COLWELL *et al.* 2004).

McCAIN (2009) described global trends in bird elevational diversity, such as the four distinct diversity patterns displayed by birds on mountains: 1) monotonic decreasing diversity, 2) constant at low elevations, 3) constant at low elevations but increasing towards the middle, and 4) unimodal maximum at mid elevations. She also showed that bird diversity on mountains where humidity is high either declines with elevation or is relatively constant over low-elevations, while on dry mountains it is unimodal or constant over a broad, low-elevation region, usually with a mid-elevation maximum. Here we analyse the elevational diversity of birds in the Atlantic Forest. Our main goals were 1) to review the studies on bird elevational diversity in mountainous regions in the Brazilian Atlantic Forest; 2) to determine and compare elevational patterns of species richness in Atlantic Forest described in the literature; and 3) to test the predictions of the MDE with these data sets.

## MATERIAL AND METHODS

We compiled data on bird elevational diversity from the literature using a combination of the following search keywords suggested by McCAIN (2009): bird, avian, diversity, species richness, elevation (-al), altitude (-inal), Brazil. Species-altitude relationships were derived from these data and also from a few publications that McCAIN (2009) excluded from her global meta-analyses, because they apparently contained biased sampling methods. We are aware that we cannot control for the completeness of surveys we used to generate our review, but our intention was to determine elevational patterns of Atlantic Forest birds using all available data.

We also included our standardized elevational bird dataset from the Serra do Mar, state of São Paulo. To do this, we con-

ducted bird counts in the municipalities of Bertioiga (23°51'S, 46°08'W) and at Boracéia Biological Station (23°39'S, 45°53'W), near the municipality of Salesópolis, in the mountains of the Atlantic Forest, during two breeding seasons, using point counts from October 2008 to February 2010. We used nine 100 m wide elevational belt transects along one trail in an 800 m elevational gradient, with three 10-min points at least 200 m apart on each transect. We considered a 50 m limited radius of detection to avoid counting birds from adjacent transects. These analyses, including detailed sampling design and surveys, will be published elsewhere (V. Cavarzere & L.F. Silveira unpubl. data).

The climate in all study areas (reviews and our data alike) comprises two well-defined seasons: a warm-wet season from October to April, and a cold-dry season from May to September. Five transition zones can be found at the study areas, though not all in the same local gradient. They are typically known as: Lowland Rain Forest (0-400 m), Lower Montane Rain Forest (400-1,000 m), Montane Rain Forest (above 1,000 m), *Campos de Altitude* (open formations above 1,000 m in the Serra do Mar or even higher on the Serra do Itatiaia), and Montane Araucaria Forest (above 1,000 m; VELOSO *et al.* 1991).

To test the four MDE predictions, we conducted statistical analyses following McCAIN (2009). Prediction 1 (as explained in the Introduction), a unimodal diversity curve at mid-elevations: to assess whether there are more mid-elevation maximums than other diversity patterns, we used the chi-square goodness of fit test. Prediction 2, a positive association between predicted and empirical diversity: to compare the observed with the expected species richness by the MDE, we generated 95% prediction intervals using 50,000 Monte Carlo simulations of elevational ranges within the domain using the Mid-Domain Null Excel worksheet (McCAIN 2004). The expected species richness in each elevational band was generated using the empirical range sizes sampled without replacement, and randomly chosen range mid-points. To evaluate whether species richness predicted by the mid-domain effect (based solely on geometric constraints assuming hard boundaries) is congruent with the observed species richness, we tested the fit between the two sets of species richness from the coefficient of determination of a least-squares linear regression (COLWELL *et al.* 2004, McCAIN 2004). Prediction 3, deviation in maximum diversity distributed away from the mid-point of the mountain: we used the Student's t-test to ascertain if maximum diversities were more likely to occur at the middle of the elevational gradient than at any other elevation. Prediction 4, a relationship between MDE fit and the ratio of the average bird range size: the  $r^2$  value from the linear regression of the MDE with a ratio of average bird range size (m) divided by the length of the elevational gradient (m) for each study provided an index of the strength of the MDE range size prediction (LEES *et al.* 1999, DUNN *et al.* 2007).

For studies that did not sample the elevational gradient in regular intervals (we analysed 100 m elevational belts with the Mid-Domain Null), we determined  $r^2$  values by interpola-

tion: a species was then considered present at a given elevation if it was present in the next upper and lower altitudinal band. We only analysed data in the literature with sufficient information to fulfil the premises of the Mid-Domain Null. For statistical analysis we used SPSS 13.0 for Windows (SPSS 2004).

## RESULTS

We found 10 research publications on bird elevational diversity conducted in mountainous regions in Brazil. All studies, except for one, were carried out in the Atlantic Forest. The exception was a study carried out at a transition zone with the Cerrado in the Serra do Espinhaço, state of Minas Gerais (Fig. 1, Tab. I). We found five elevational patterns from these data: monotonic decreasing diversity, increasing diversity, constant at low elevations, constant at low elevations but increasing towards the middle and trough-shaped (Figs 2-6).

Data from HOLT (1928) and RAJÃO & CERQUEIRA (2006) confirmed a MDE with only a few deviations from the predictions of the null model, while the study of MELO-JÚNIOR *et al.* (2001) contrasted with the unimodal pattern and described a monotonic decreasing species-altitude curve. MALLET-RODRIGUES *et al.* (2010), our own data, and the study of the distribution of the family Furnariidae (FÁVARO *et al.* 2006) revealed a poor fit to the

MDE predictions. Our data, which demonstrated a trough-shaped pattern, and that of FÁVARO *et al.* (2006), showing an increasing pattern of diversity towards higher elevations, resulted in undescribed relationships between elevation and bird species of the Atlantic Forest (Figs 7-12).

Bird diversity did not fit well any of the four MDE predictions. Elevational diversity was not uniformly unimodal, but tended to assume different shapes of species-altitude curves (contrary to prediction 1;  $\chi^2 = 4.45$ ,  $df = 1$ ,  $p = 0.035$ ,  $n = 11$ ). Fits to the null model were variable and poor: average  $r^2$  value = 0.31 for those studies with available species range data (prediction 2,  $n = 6$ ). Deviations in maximum bird diversity were not randomly distributed around the mid-point of the mountain, but shifted to significantly lower elevations (prediction 3,  $t = -1.74$ ,  $df = 4$ ,  $p = 0.034$ ,  $n = 11$ ). Finally, there was a positive relationship between the ratio average bird range size/gradient length and fit to MDE (prediction 4,  $r^2 = 0.79$ ,  $F = 15.412$ ,  $df = 1$ ,  $p = 0.017$ ,  $n = 6$ ).

## DISCUSSION

In the Atlantic Forest of Brazil, bird species diversity is not explained by the Mid-domain Effect. Some of the MDE predictions were not strongly supported, and most of the MDE regressions resulted in a poor fit to the MDE predictions. De-

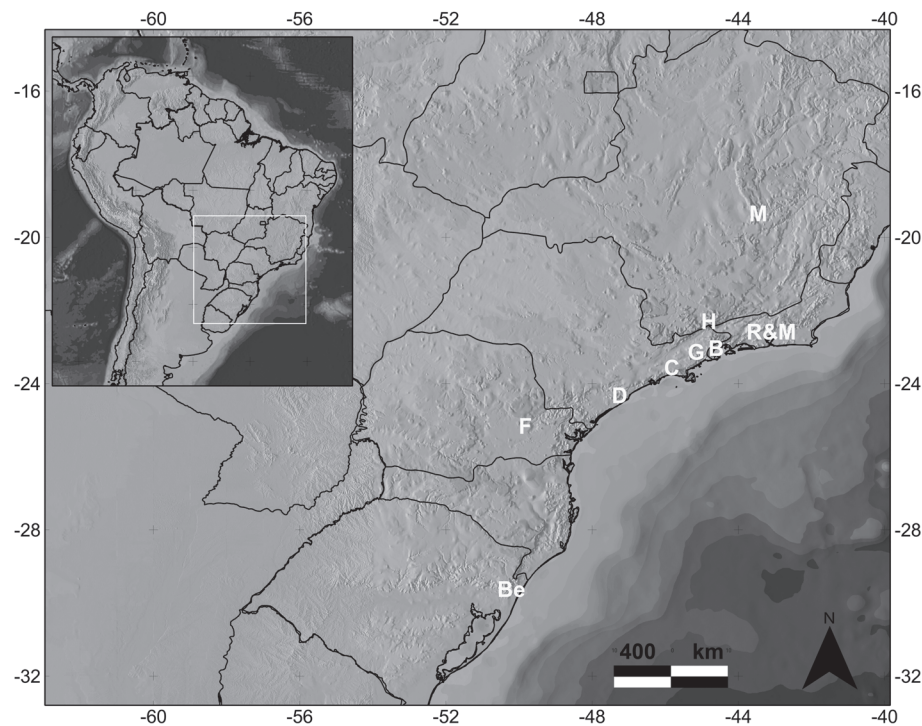
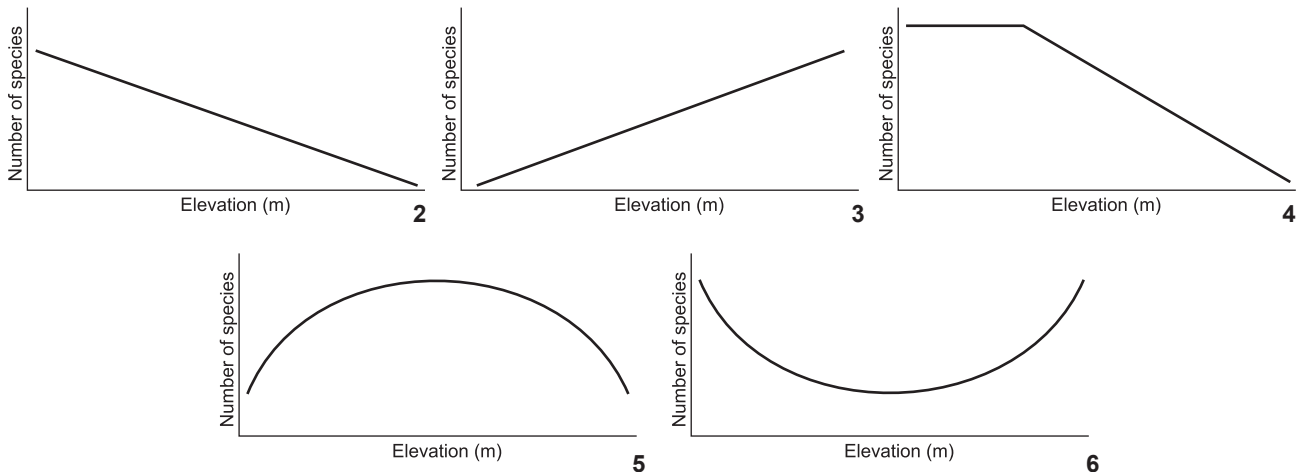
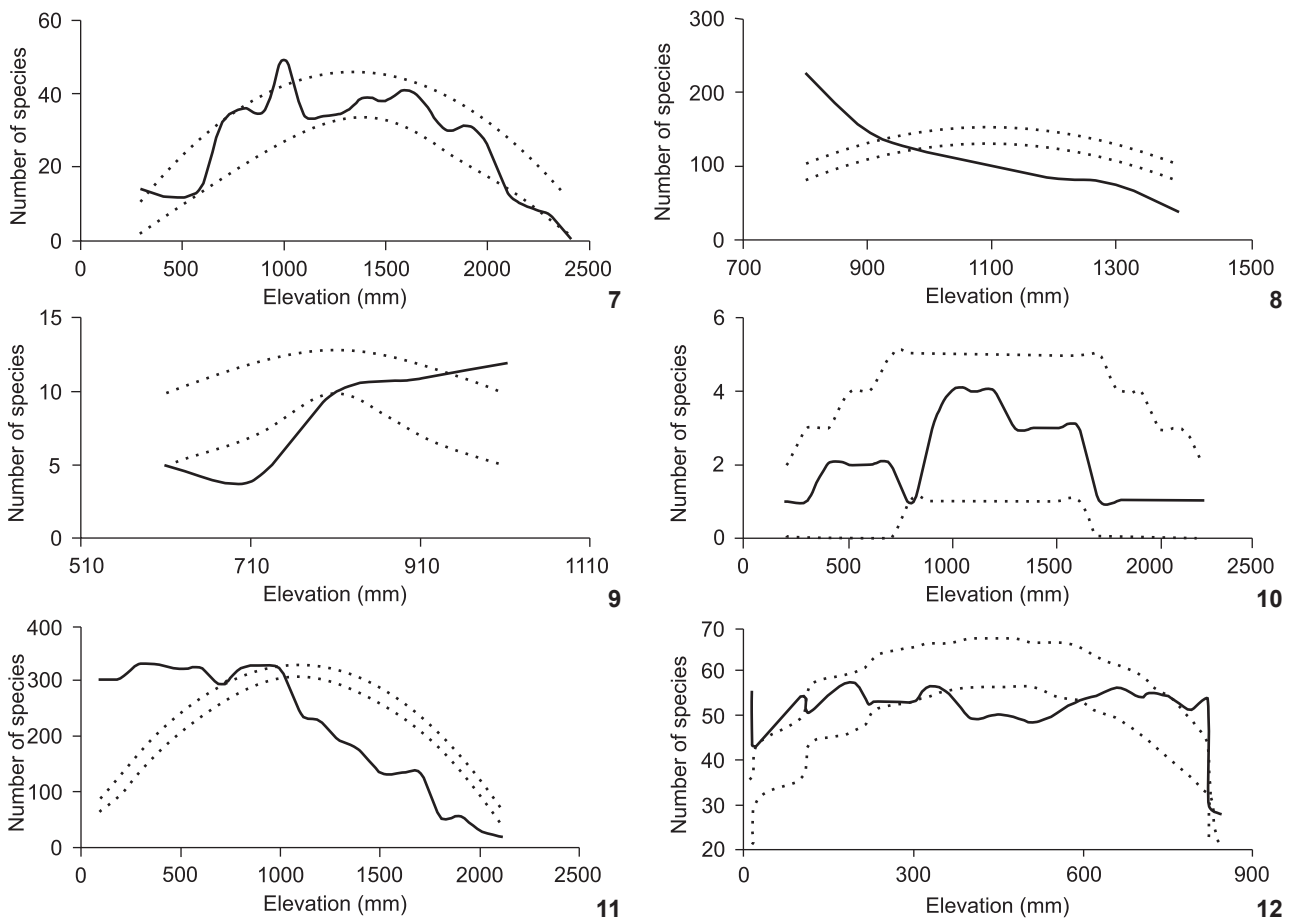


Figure 1. Locations where elevational bird surveys were conducted in Brazilian Atlantic Forests: (B) BUZZETTI (2000), (Be) BENCKE & KINDEL (1999), (C) this study, (D) DEVELEY (2004), (G) GOERCK (1999), (H) HOLT (1928), (M) MELO-JÚNIOR *et al.* (2001), (F) FÁVARO *et al.* (2006), (R&M) RAJÃO & CERQUEIRA (2006), and MALLET-RODRIGUES *et al.* (2010). STOTZ *et al.* (1996) contemplated the whole Atlantic Forest.



Figures 2-6. Elevational richness patterns based on empirical datasets at different Brazilian Atlantic Forest sites: (2) monotonic decreasing diversity, (3) increasing diversity, (4) constant at low elevations, (5) unimodal maximum at mid-elevations and (6) trough-shaped.



Figures 7-12. Empirical (solid lines) and the 95% CI of the predicted species richness based on 50,000 Monte Carlo simulations sampled without replacement of the six gradients we analysed from: (7) HOLT (1928); (8) MELO-JUNIOR *et al.* (2001); (9) FÁVARO *et al.* (2006); (10) RAJÃO & CERQUEIRA (2006); (11) MALLET-RODRIGUES *et al.* (2010); (12) present study.

Table I. List of elevational gradients of bird species richness for the Atlantic Forest, Brazil. Richness pattern, latitude, percentage of gradient sampled, altitude and MDE null model  $r^2$  values are given. N/A indicates studies with insufficient data for MDE analyses. (DC) Monotonic decreasing diversity, (CL) constant at low elevations, (UM) unimodal maximum at mid-elevations, (TS) trough-shaped, (ID) increasing diversity.

Study site (reference)	Elevation pattern	Latitude	%	Altitude (m)	$r^2$
Serra do Itatiaia, Rio de Janeiro (HOLT 1928)	MP	-22	88.0	2500	0.82*
Atlantic Forest (STOTZ <i>et al.</i> 1996)	CL	-15	99.0	3014	N/A
Tainhas – Terra de Areia, Rio Grande do Sul (BENCKE & KINDEL 1999)	UM	-29	70.0	1000	N/A
Ubatuba, São Paulo state (GOERCK 1999)	DC	-23	91.0	1150	N/A
Angra dos Reis – Parati, Rio de Janeiro (BUZZETTI 2000)	CL	-23	100.0	1700	N/A
Serra do Cipó, Minas Gerais state (MELO-JÚNIOR <i>et al.</i> 2001)	DC	-19	88.0	1600	0.05
Juréia-Itatins Ecological Station, São Paulo (DEVELEY 2004)	DC	-24	85.0	1300	N/A
Tibagi River Basin, Paraná (FÁVARO <i>et al.</i> 2006)	ID	-25	6.5	1010	0.04
Serra dos Órgãos, Rio de Janeiro (RAJÃO & CERQUEIRA 2006)	UM	-22	100.0	2260	0.42
Serra dos Órgãos, Rio de Janeiro (MALLETT-RODRIGUES <i>et al.</i> 2010)	CL	-22	90.0	2260	0.11
Bertioga – Salesópolis, São Paulo (this study)	TS	-23	100.0	800	0.43

\*  $p = 0.000$ ;  $p = 0.001$ .

viations of the maximum diversity away from the mid-point of the mountain were not randomly distributed, and the positive relationship of prediction 4) included incomplete elevational gradients and unstandardized sampling designs. Similar trends in low MDE fits and skewed deviations have been documented along elevational gradients globally for non-flying small mammals (McCAIN 2007b), bats (McCAIN 2007a), birds (McCAIN 2009) and reptiles (McCAIN 2010). For most vertebrate groups and other taxa examined to date (DUNN *et al.* 2007), elevational patterns consistently reject the MDE, and therefore we must look for other factors that may determine bird species richness along elevations.

McCAIN (2009) suggested that, in wet tropical mountains, bird elevation patterns should be decreasing and monotonic, with or without a maximum diversity at low elevations. This was not the case in five studies analysed here. In the only case where elevational diversity was greatest at low elevations, the sampling effort at different altitudes was not reported, and this pattern may be an artefact of low sampling intensity. Although most gradients examined considered small spatial scales (large spatial diversity patterns of taxonomic groups fit the MDE null model predictions better; DUNN *et al.* 2007), sampling methods in studies with mid-elevation maximums were not standardised (HOLT 1928, BENCKE & KINDEL 1999, RAJÃO & CERQUEIRA 2006). Our review suggests that, when testing the MDE against empirical data, the design of sampling procedures, as well as sample effort, are very important, and must include refined and standardized scales of elevational bands.

The homogeneity of the Atlantic Forest vegetation along the elevational gradient of the Serra do Mar may explain, in part, the lack of a MDE. In São Paulo, the highest peaks of this mountain range reach up to 800 m (ALMEIDA & CARNEIRO 1998). Transition zones occur at this altitude (VELOSO *et al.* 1991), but are

probably not enough to create discrete habitat types, which is the basis for the community overlap theory (LOMOLINO 2001). In the case of HOLT (1928), the greatest species richness coincides with the transition between forest and *Campos de Altitude* (open formations) at 2,870 m of the Serra do Itatiaia. The same observation can be made for the maximum diversity in the compilation of surveys in RAJÃO & CERQUEIRA (2006). The extensive bird counts of MALLETT-RODRIGUES *et al.* (2010) also found high species richness around 1,000 m (transition between forest and *Campos de Altitude*) at the Serra dos Órgãos, but the same number of species were found between 200 and 600 m, without a break in vegetation. By contrast, no diversity maximum at transition zones was evident in the results of MELO-JÚNIOR *et al.* (2001) and in our data. Apparently, community overlap theory may apply to higher elevational gradients, such as South American Tropical Andes, where more evident transitions in vegetation occur (TERBORGH 1985). Even along gradients where the highest peaks are similar to those found in Brazil, elevational diversity patterns did not support the community overlap theory (McCAIN 2004).

The lack of information necessary to complement other analyses, as well as few studies, make it difficult to identify environmental drivers of changes in bird species richness with altitude. Uneven sample effort is not responsible for the observed patterns, as shown by independence between sample effort and bird diversity for the state of Rio Grande do Sul (Spearman;  $r^2 = 0.093$ ,  $p = 0.843$ ; BENCKE & KINDEL 1999) or for the coastal municipality of Ubatuba, São Paulo ( $r^2 = 0.500$ ,  $p = 0.667$ ; GOERCK 1999). Lack of predictive power diminishes the generality of the MDE null model as an explanation for bird elevational diversity patterns, and consistent deviations from the null model predictions suggest underlying climatic drivers (McCAIN 2007a). Recent studies have focused on climatic variables, such as availability of water and temperature,



and their effect on vegetation distribution, as explanations for the elevational distribution of animals. McCain concluded that most investigations were highly correlated with these abiotic factors in determining species richness of bats (McCain 2007b), birds (McCain 2009) and reptiles (McCain 2010), in spite of the altitude in which the gradient diversity was greatest.

In the only previous published study of the MDE in Brazil, this null model was rejected as an explanation for the elevational pattern of harvestmen on three mountains in Ubatuba (Almeida-Neto *et al.* 2006). Instead, the decline in species richness with increasing elevation was correlated to temperature and humidity. The value of the spatial constraint null model corresponds to its quantitative prediction of diversity; thus the low fits to the MDE predictions along elevational gradients show that diversity is responding to biological factors and not simply to space (McCain 2007b). Similar support for combined temperature and water as drivers of diversity exists globally for most plant and animal groups (Hawkins *et al.* 2003), and for various plant groups along elevations (e.g., Bhattarai *et al.* 2004, Carpenter 2005, Krömer *et al.* 2005, Acharya *et al.* 2011). Thus, most direct and indirect evidence currently supports a climatic driver (which must be considered for future evaluations) of diversity patterns with space playing less-pronounced roles (McCain 2007b). Although elevational studies have been conducted worldwide, the most recent studies have failed to support the MDE for birds, thereby showing that bird (and other taxa) diversity patterns with elevation are not merely consequences of random processes.

### ACKNOWLEDGMENTS

We thank Pedro F. Develey and José C. Motta Jr for important suggestions on an earlier stage of this study, and Instituto de Biociências da Universidade de São Paulo. Gabriel P. Moraes and Fernanda G. Maciel helped during recent bird surveys in São Paulo. IdeaWild and United Parcel Services (UPS), through Bruno Ehlers, provided essential field equipment. VC benefited from the Coordenação de Aperfeiçoamento de Pessoal de Nível Superior (CAPES) scholarship during the development of this study. LFS receives a grant from Conselho Nacional de Desenvolvimento Científico e Tecnológico (CNPq, #313818/2009-6). Léo Novaes produced all images. Three anonymous reviewers and Michael Lawes greatly improved an initial manuscript with several important contributions.

### LITERATURE CITED

- ACHARYA, K.P.; O.R. VETAAS & H.J.B. BIRKS. 2011. Orchid species richness along Himalayan elevational gradients. *Journal of Biogeography* **38** (9): 1821-1833. doi: 10.1111/j.1365-2699.2011.02511.x.
- ALIABADINA, M.; R. SLUYS; C.S. ROSELAAR & V. NIJMAN. 2008. Species diversity and endemism: testing the mid-domain effect on species richness patterns of songbirds in the Palearctic region. *Contributions to Zoology* **77** (2): 99-108.
- ALMEIDA, F.F.M. & C.R. CARNEIRO. 1998. Origem e evolução da Serra do Mar. *Revista Brasileira de Geociências* **28** (2): 135-150.
- ALMEIDA-NETO, M.; G. MACHADO; R. PINTO-DA-ROCHA & A.A. GIARETTA. 2006. Harvestman (Arachnida: Opiliones) species distribution along three Neotropical elevational gradients: an alternative rescue effect to explain Rapoport's rule? *Journal of Biogeography* **33** (2): 361-375. doi:10.1111/j.1365-2699.2005.01389.x.
- BHATTARAI, K.R.; O.R. VETAAS & J.A. GRYNES. 2004. Fern species richness along a central Himalayan elevational gradient, Nepal. *Journal of Biogeography* **31** (3): 389-400. doi: 10.1046/j.0305-0270.2003.01013.x.
- BENCKE, G.A. & A. KINDEL. 1999. Bird count along an altitudinal gradient of Atlantic Forest in northeastern Rio Grande do Sul, Brazil. *Ararajuba* **7** (2): 91-107.
- BOKMA, F. & M. MÖNKKÖNEN. 2000. The mid-domain effect and the longitudinal dimension of continents. *Trends in Ecology and Evolution* **15** (7): 288-289. doi:10.1016/S0169-5347(00)01885-1.
- BOKMA, F.; J. BOKMA & M. MÖNKKÖNEN. 2001. Random processes and geographic species richness patterns: why so few species in the north. *Ecography* **24** (12): 43-49. doi: 10.1034/j.1600-0587.2001.240106.x.
- BROWN, J.H. 2001. Mammals on mountainsides: elevational patterns of diversity. *Global Ecology and Biogeography* **10** (1): 101-109. doi: 10.1046/j.1466-822x.2001.00228.x.
- BUZZETTI, D.R.C. 2000. Distribuição altitudinal de aves em Angra dos Reis e Parati, sul do Estado do Rio de Janeiro, p. 131-148. *In*: M.A.S. ALVES; J.M.C. SILVA; M. VAN SLUYS; H.G. BERGALLO & C.F.D. ROCHA (Eds). *A ornitologia no Brasil: pesquisa atual e perspectivas*. Rio de Janeiro, Eduerj, 352p.
- CARPENTER, C. 2005. The environmental control of plant density on a Himalayan elevation gradient. *Journal of Biogeography* **32** (6): 999-1018. doi: 10.1111/j.1365-2699.2005.01249.x.
- COLWELL, R.K. & G.C. HURTT. 1994. Non biological gradients in species richness and a spurious Rapoport's effect. *The American Naturalist* **144** (4): 570-595. doi:10.2307/2462939.
- COLWELL, R.K. & D.C. LEES. 2000. The mid-domain effect: geometric constraints on the geography of species richness. *Trends in Ecology and Evolution* **15** (2): 70-76. doi:10.1016/S0169-5347(99)01767-X.
- COLWELL, R.K.; C. RAHBK & N.J. GOTELLI. 2004. The mid-domain effect and species richness patterns: what have we learned so far? *The American Naturalist* **163** (3): E1-E23. doi: 10.1086/382056.
- DEVELEY, P.F. 2004. As aves da Estação Ecológica Juréia-Itatins, p. 278-295. *In*: O.A.V. MARQUES & W. DULEBA (Ed.). *A Estação Ecológica Juréia-Itatins: ambiente físico, flora e fauna*. Ribeirão Preto, Holos, 386p.

- DINIZ-FILHO, J.A.F.; C.E.R. SANT'ANA; M.C. SOUZA & T.F.L.V.B. RANGEL. 2002. Null models and spatial patterns of species richness in South American birds of prey. *Ecology Letters* 5 (1): 47-55. doi: 10.1046/j.1461-0248.2002.00289.x.
- DUNN, R.R.; C.M. MCCAIN & N.J. SANDERS. 2007. When does diversity fit null model predictions? Scale and range size mediate the mid-domain effect. *Global Ecology and Biogeography* 16 (3): 305-312. doi: 10.1111/j.1466-8238.2006.00284.x.
- EGUCHI, K.; M. TAKEISHI; H. NAGATA; Y. HEMNI & N. KAWAJI. 1989. Altitudinal distribution of forest birds in the Kayu-Shima Island, Kagoshima Prefecture, Japan. I. Breeding season. *Japanese Journal of Ecology* 39 (1): 53-65.
- FÁVARO, F.L.; L. ANJOS; E.V. LOPES; L.B. MENDONÇA & G.H. VOLPATO. 2006. Efeito do gradiente altitudinal/latitudinal sobre espécies de aves florestais da família Furnariidae na Bacia do Rio Tibagi, Paraná, Brasil. *Revista Brasileira de Zoologia* 23 (1): 261-266. doi: http://dx.doi.org/10.1590/S0101-81752006000100020.
- GARCÍA-LOPEZ, A.; E. MICÓ & E. GALANTE. 2011. From lowlands to highlands: searching for elevational patterns of species richness and distribution of scarab beetles in Costa Rica. *Diversity and Distributions* 16 (6): 543-553. doi: 10.1111/j.1472-4642.2011.00846.x.
- GOERCK, J.M. 1999. Distribution of birds along an elevational gradient in the Atlantic Forest of Brazil: implications for the conservation of endemic and endangered species. *Bird Conservation International* 9: 235-253. doi: 10.1017/S0959270900003439.
- GOODMAN, S.M. & P.C. GONZALES. 1990. The birds of Mt. Isarog National Park, Southern Luzon, Philippines, with particular reference to altitudinal distribution. *Fieldiana Zoology* 60: 1-39.
- GRINNELL, J. & T. I. STORER. 1924. *Animal life in the Yosemite: an account of the mammals, birds, reptiles, and amphibians in a cross-section of the Sierra Nevada*. Berkeley, University of California Press, XVIII+741p.
- HAWKINS, B.A. & J.A.F. DINIZ-FILHO. 2002. The mid-domain effect cannot explain the diversity gradient of Nearctic birds. *Global Ecology and Biogeography* 11 (5): 419-426.
- HAWKINS, B.A.; R. FIELD; H.V. CORNELL; D.J. CURRIE; J.F. GUÉGAN; D.M. KAUFMAN; J.T. KERR; G.G. MITTELBACH; T. OBERDORFF; E. O'BRIEN; E.E. PORTER & J.R.G. TURNER. 2003. Energy, water, and broad-scale geographic patterns of species richness. *Ecology* 84 (12): 3105-3117. doi: 10.1890/03-8006.
- HEANEY, L.R. 2001. Small mammal diversity along elevational gradients in the Philippines: an assessment of patterns and hypotheses. *Global Ecology and Biogeography* 10 (1): 15-39. doi: 10.1046/j.1466-822x.2001.00227.x.
- HENNESSEY, A.B.; S.A. HERZOG; M. KESSLER & D. ROBINSON. 2003. Avifauna of the Pilón Lajas Biosphere Reserve and Communal Lands, Bolivia. *Bird Conservation International* 13: 319-349. doi: 10.1017/S095927093993241.
- HERZOG, S. K.; M. KESSLER & K. BACH. 2005. The elevational gradient in Andean bird species richness at the local scale: a foothill peak and a high-elevation plateau. *Ecography* 28 (2): 209-222. doi: 10.1111/j.0906-7590.2005.03935.x.
- HOLT, E.G. 1928. An ornithological survey of the Serra do Itatiaya, Brazil. *Bulletin of the American Museum of Natural History* 57 (5): 251-326.
- JETZ, W. & C. RAHBK. 2001. Geometric constraints explain much of the species richness pattern in African birds. *Proceedings of the National Academy of Sciences of the United States of America* 98 (10): 5661-5666. doi: 10.1073/pnas.091100998.
- KATTAN, G.H. & P. FRANCO. 2004. Bird diversity along elevational gradients in the Andes of Colombia: area and mass effects. *Global Ecology and Biogeography* 13 (5): 451-458. doi: 10.1111/j.1466-822x.2004.00117.x.
- KESSLER, M. 2000. Elevational gradients in species richness and endemism of selected plant groups in the central Bolivian Andes. *Plant Ecology* 149 (2): 181-193. doi: 10.1023/A:1026500710274.
- KESSLER, M. 2001. Patterns of diversity and range size of selected plant groups along an elevational transect in the Bolivian Andes. *Biodiversity and Conservation* 10 (11): 1897-1921. doi: 10.1023/A:1013130902993.
- KIKKAWA, J. & E.E. WILLIAMS. 1971. Altitude distribution of land birds in New Guinea. *Search* 2: 64-65.
- KOLEFF, P. & K.J. GASTON. 2001. Latitudinal gradients in diversity: real patterns and random models. *Ecography* 24 (3): 341-351. doi: 10.1111/j.1600-0587.2001.tb00207.x.
- KRÖMER, T.; M. KESSLER; S.R. GRADSTEIN & A. ACEBEY. 2005. Diversity patterns of vascular epiphytes along an elevational gradient in the Andes. *Journal of Biogeography* 32 (10): 1799-1809. doi: 10.1111/j.1365-2699.2005.01318.x.
- LACK, D. 1976. *Island Biology illustrated by the land birds of Jamaica*. Berkeley, University of California Press, XVI+445p.
- LAURIE, H. & J.A. SILANDER JR. 2002. Geometric constraints and spatial patterns of species richness: critique of range-based models. *Diversity and Distributions* 8 (6): 351-364. doi: 10.1046/j.1472-4642.2002.00160.x.
- LEES, D.C.; C. KREMER & L. ANDRIAMAMPINANINA. 1999. A null model for species richness gradients: bounded range overlap of butterflies and other rainforest endemics in Madagascar. *Biological Journal of the Linnean Society* 67 (4): 529-584. doi: 10.1111/j.1095-8312.1999.tb01945.x.
- LIEBERMAN, D.; M. LIEBERMAN; R. PERALTA & G.S. HARTSHORN. 1996. Tropical forest structure and composition on a large-scale altitudinal gradient in Costa Rica. *Journal of Ecology* 84 (2): 137-152.
- LOMOLINO, M. V. 2001. Elevation gradients of species-density: historical and prospective views. *Global Ecology and Biogeography* 10 (1): 3-13. doi: 10.1046/j.1466-822x.2001.00229.x.
- MALLET-RODRIGUES, F.; R. PARRINI; L.M.S. PIMENTEL & R. BESSA. 2010. Altitudinal distribution of birds in a mountainous region in

- southeastern Brazil. *Zoologia* 27 (4): 503-522. doi: 10.1590/S1984-46702010000400003.
- McCain, C.M. 2004. The mid-domain effect applied to elevational gradients: species richness of small mammals in Costa Rica. *Journal of Biogeography* 31 (1): 19-31. doi: 10.1046/j.0305-0270.2003.00992.x.
- McCain, C.M. 2007a. Area and mammalian elevational diversity. *Ecology* 88 (1): 76-86. doi: 10.1890/0012-9658(2007)88[76:AAMED]2.0.CO;2.
- McCain, C.M. 2007b. Could temperature and water availability drive elevational species richness patterns? A global case study for bats. *Global Ecology and Biogeography* 16 (1): 1-13. doi: 10.1111/j.1466-8238.2006.00263.x.
- McCain, C.M. 2009. Global analysis of bird elevational diversity. *Global Ecology and Biogeography* 18 (3): 346-360. doi: 10.1111/j.1466-8238.2008.00443.x.
- McCain, C.M. 2010. Global analysis of reptile elevational diversity. *Global Ecology and Biogeography* 19 (4): 541-553. doi: 10.1111/j.1466-8238.2010.00528.x.
- Melo-Júnior, T.A.; M.F. Vasconcelos; G.W. Fernandes & M.A. Marini. 2001. Bird species distribution and conservation in Serra do Cipó, Minas Gerais, Brazil. *Bird Conservation International* 11 (3): 189-204. doi: 10.1017/S0959270901000272.
- Nathan, R. & Y.L. Werner. 1999. Reptiles and breeding birds on Mt. Hermon: patterns of altitudinal distribution and species richness. *Israel Journal of Zoology* 45 (1): 1-33.
- Orians, G.H. 1969. The number of bird species in some tropical forests. *Ecology* 50 (5): 783-801. doi: 10.2307/1933692.
- Patterson, B.D.; D.F. Stotz; S. Solari; J.W. Fitzpatrick & V. Pacheco. 1998. Contrasting patterns of elevational zonation for birds and mammals in the Andes of southeastern Peru. *Journal of Biogeography* 25 (3): 593-607. doi: 10.1046/j.1365-2699.1998.2530593.x.
- Paulsch, D. & K. Müller-Hohenstein. 2008. Bird species distribution along an altitudinal gradient in southern Ecuador and its functional relationships with vegetation structure, p. 149-156. In: E. Beck; J. Bendix; I. Kottke; F. Makeschin & R. Mosandel (Eds). *Gradients in a Tropical Mountain Ecosystem of Ecuador*. Berlin, Springer Berlin Heidelberg, XXIV+526p. doi: 10.1007/978-3-540-73526-7\_15.
- Pearson, O.P. & C.P. Ralph. 1978. The diversity and abundance of vertebrates along an altitudinal gradient in Peru. *Memorias del Museo de Historia Natural "Javier Prado"* 18: 1-97.
- Prigogine, A. 1980. The altitudinal distribution of the avifauna in the Itombwe forest (Zaire). *Proceedings of the IV Pan-African Ornithological Congress*: 169-184.
- Rahbek, C. 1997. The relationship among area, elevation, and regional species richness in neotropical birds. *The American Naturalist* 149 (5): 875-902. doi: 10.1086/286028.
- Rajão, H. & R. Cerqueira. 2006. Distribuição altitudinal e simpatria das aves do gênero *Drymophila* Swainson (Passeriformes, Thamnophilidae) na Mata Atlântica. *Revista Brasileira de Zoologia* 23 (3): 597-607. doi: 10.1590/S0101-81752006000300002.
- Sanders, N. J. 2002. Elevational gradients in ant species richness: area, geometry and Rapoport's rule. *Ecography* 25 (1): 25-32. doi: 10.1034/j.1600-0587.2002.250104.x.
- SPSS. 2004. *SPSS (Statistical Package for Social Sciences)*. Version 13.0. Chicago, SPSS Inc.
- Stevens, G.C. 1992. The elevational gradient in altitudinal range: an extension of Rapoport's latitudinal rule to altitude. *The American Naturalist* 140 (6): 893-911.
- Stotz, D.F.; J.W. Fitzpatrick; T.A. Parker & D.K. Moskovits. 1996. *Neotropical birds: ecology and conservation*. Chicago, University of Chicago Press, XX+478p.
- Terborgh, J. 1971. Distribution on environmental gradients: theory and a preliminary interpretation of distributional patterns in the avifauna of the Cordillera Vilcabamba, Peru. *Ecology* 52 (1): 23-40. doi: 10.2307/1934735.
- Terborgh, J. 1977. Bird species diversity on an Andean elevational gradient. *Ecology* 58 (5): 1007-1019. doi: 10.2307/1936921.
- Terborgh, J. 1985. The role of ecotones in the distribution of Andean birds. *Ecology* 66 (4): 1237-1246. doi: 10.2307/1939177.
- Terborgh, J. & J.S. Weske. 1975. The role of competition in the distribution of Andean birds. *Ecology* 56 (3): 562-576. doi: 10.2307/1935491.
- Thiollay, J.M. 1980. L'évolution des peuplements d'oiseaux tropicaux le long d'un gradient altitudinal dans l'himalaya central. *Terre et la Vie* 34: 199-269.
- Thormstrom, R. & R.T. Watson. 1997. Avian inventory and key species of the Masoala Peninsula, Madagascar. *Bird Conservation International* 7 (2): 99-115. doi: 10.1017/S0959270900001453.
- Veloso, H.P.; A.L.R. Rangel Filho & J.C.A. Lima. 1991. *Classificação da vegetação brasileira, adaptada a um sistema internacional*. Rio de Janeiro, IBGE/CDDI, Departamento de Documentação e Biblioteca, 124p.
- Wartmann, B. & R.K. Furrer. 1977. Zur Struktur der avifauna eines Alpenteles entlang des Höhengradienten. I. Veränderungen zur Brutzeit. *Der Ornithologische Beobachter* 74: 137-160.
- Zapata, F.A.; K. J. Gaston & S.L. Chown. 2003. Mid-domain models of species richness gradients: assumptions, methods and evidence. *Journal of Animal Ecology* 72 (4): 677-690. doi: 10.1046/j.1365-2656.2003.00741.x.

Submitted: 17.XI.2011; Accepted: 14.VII.2012.

Editorial responsibility: Claudio J.B. de Carvalho