



A critical evaluation of the effect of population size and phenotypic measurement on QTL detection and localization using a large F2 murine mapping population

Xinmin Li^{1,3}, Richard J Quigg^{1,4}, Jian Zhou¹, Shizhong Xu², Godfred Masinde³, Subburaman Mohan³ and David J. Baylink³

¹University of Chicago, Division of Biological Sciences, Functional Genomics Facility, Chicago, IL, USA.

²University of California, Department of Botany and Plant Sciences, Riverside, CA, USA.

³JL Pettis VA Medical Center and Loma Linda University, Musculoskeletal Disease Center, Molecular Genetics Division, Loma Linda, CA, USA.

⁴University of Chicago, Department of Medicine, Section of Nephrology, Chicago, IL, USA.

Abstract

Population size and phenotypic measurement are two key factors determining the detection power of quantitative trait loci (QTL) mapping. We evaluated how these two controllable factors quantitatively affect the detection of QTL and their localization using a large F2 murine mapping population and found that three main points emerged from this study. One finding was that the sensitivity of QTL detection significantly decreased as the population size decreased. The decrease in the percentage logarithm of the odd score (LOD score, which is a statistical measure of the likelihood of two loci being linked near each other on a chromosome) can be estimated using the formula $1 - n/N$, where n is the smaller and N the larger population size. This empirical formula has several practical implications in QTL mapping. We also found that a population size of 300 seems to be a threshold for the detection of QTL and their localization, which challenges the small population sizes commonly-used in published studies, in excess of 60% of which cite population sizes <300. In addition, it seems that the precision of phenotypic measurement has a limited capacity to affect detection power, which means that quantitative traits that cannot be measured precisely can also be used in QTL mapping for the detection of major QTL.

Key words: QTL mapping, mice, detection power, population size, phenotypic measurement.

Received: November 23, 2004; Accepted: May 31, 2005.

Introduction

Quantitative trait loci (QTL) mapping has become increasingly informative in genomic data integration (Fischer *et al.*, 2003; Vitt *et al.*, 2004; Flint *et al.*, 2005), but the number of QTL which can be detected and the precision with which they can be located on the chromosome remain two key issues facing this type of mapping (Churchill and Doerge, 1994; Dupuis and Siegmund, 1999; Lander and Kruglyak, 1995; Liu, 1997). Many factors affect both the number of QTL which can be detected and the precision with which they can be located. Some of these factors are often unknown at the start of a study and beyond experimental control, while other factors are known and controllable. Among the controllable factors, population size, phenotypic measurement and marker density contribute to QTL detection and localization.

One of the most frequently asked questions when designing a mapping experiment is 'What population size should be used?', *i.e.*, what is the statistical power needed to detect linkage given a certain population size and are N individuals enough to estimate the recombination fraction with a given precision. Theoretically, population size can be estimated based on the statistical power (γ), hypothetical recombination fraction (θ) and significance level being used (α). Several simulation experiments have been carried out to address the question of population size (Darvasi *et al.*, 1993; Darvasi and Soller, 1997; Belknap, 1998) and formulae have been developed to calculate the population size required for the detection of QTL when assuming that the dominance and standardized allele effects are known (Soller *et al.*, 1976; Lander and Botstein, 1989) but, in practice, population sizes are still difficult to estimate without any assumption. Consequently, time and cost is generally used to determine the population size needed for QTL analysis. We surveyed 71 F2-based murine mapping experi-

Send correspondence to Xinmin Li. University of Chicago, 5841 S Maryland Ave., 60637 Chicago, IL, USA. E-mail: xli@medicine.bsd.uchicago.edu.

ments published during the past five years, of which 21 (30%) had a population size between 100 and 200 mice, 43 (61%) less than 300, 18 (25%) between 300 and 600, and only 10 (14%) more than 600 mice (Figure 1). This severely biased distribution toward small F2 populations strengthens the need to practically evaluate the effect of population size on the detection and localization of QTL.

Another important factor for QTL mapping is the precision of phenotypic measurement, because high measurement error will reduce the estimated heritability and decrease the detection power. Unfortunately, measurement error is normally mixed with other environmental residuals and cannot be separated from them using current statistical models, because of which we know very little about its effect on the detection of QTL and it is difficult to evaluate the applicability of imprecisely measured quantitative traits to QTL mapping.

The role of marker density in QTL mapping has been widely investigated and several studies have shown that marker density is a function of detection power within a certain density range and has little effect beyond 10 centimorgans (cM) (Darvasi *et al.*, 1993; Piepho, 2000; Frisch *et al.*, 1999).

The objective of the study described in this paper was to use an empirical approach to evaluate the effect of population size and phenotypic measurement on the detection of QTL. We hypothesized that the effect of population size and the precision of phenotypic measurement on QTL detection and localization can be empirically studied by using a large and properly selected mapping population. We tested this hypothesis using an F2 mapping population which we had previously used for genetic dissection of wound healing in mice (Masinde *et al.*, 2001). Our findings challenge the size of populations commonly used in published studies and provide an empirical guideline for the design of future F2 mapping experiments.

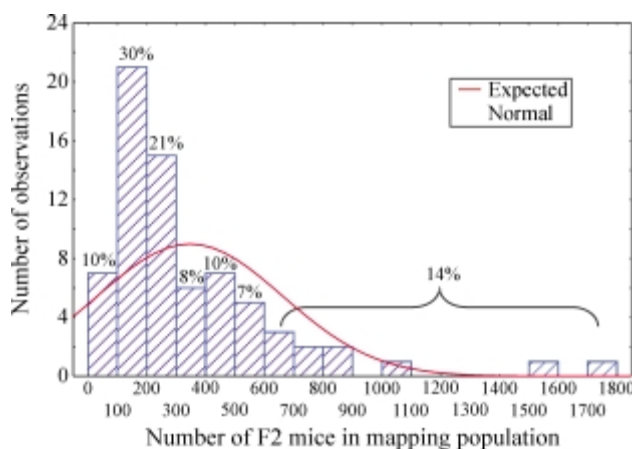


Figure 1 - Distribution of F2 progeny size in the mouse mapping experiments. Data were derived from publications in the last five years ($n = 71$). The number on the top of each bar represents the percentage of the number of experiments in that population size group in respect to the total experiments surveyed.

Materials and methods

Experimental data

All the genotype data, phenotypic measurements and wound healing QTL data used in this study were derived from Masinde *et al.* (2001) who described a murine wound-healing trait mapping experiment using a mapping population of 633 (MRL/MpJ X SJL/J) F2 female mice genotyped with 119 polymorphic markers. The wound-healing phenotype was defined by punching a 2 mm diameter hole in the soft external tissue of one ear and measuring the diameter of the hole after 21 days, the average value being 0.69 ± 0.05 mm.

Four previously identified soft tissue heal (Sth) QTL were selected for this study: Sth1 (LOD score = 6.8) responsible for 5.6% of the phenotypic variation and Sth5 (LOD score = 4.5) responsible for 4% of the phenotypic variation, representing medium-sized QTL; Sth9 (LOD score = 15.6) responsible for 13% of the phenotypic variation, representing a large QTL; and Sth10 (LOD score = 3) responsible for 2.6% of the phenotypic variation, representing a small presumptive QTL.

Data sampling

From the original data set of 633 female mice (genotype file and corresponding phenotype file), five data subsets of 500, 400, 300, 200 and 100 mice were randomly generated using a computer-assisted selection procedure. Each data sub-set included thirty replicates. For example, to generate a data sub-set of 500 animals, we randomly selected 500 mice from the original 633 mice and created new genotype and phenotype files corresponding to the 500 randomly selected mice, this random selection procedure being repeated 30 times to generate 30 genotype/phenotype files with each set of files corresponding to a different group of 500 mice. This procedure was repeated for data sub-sets of 400, 300, 200 and 100 mice randomly selected from the original 633 mice, 30 genotype/phenotype files being generated for each data sub-set as described in the previous sentence. Each set of data (a unique genotype file, unique phenotype file and the original linkage map file) was then applied to interval mapping using the MAPQTL (4.0) software (Wageningen, the Netherlands). The total of 150 QTL analyses were performed for the 5 sub-data sets (30 replicates X 5 sub-data sets).

Corruption of phenotypic measurement data

The original ear-hole measurement data were corrupted by adding to, or subtracting from, the phenotypic measurement 1, 2, 3, 4, 5, 6, 7 or 8 standard deviations (SD), previously determined to be 0.05 mm (Li *et al.*, 2001). To decide the direction of data corruption we randomly allocated either a 1 or a 0 to each of the 633 ear measurement data points from the F2 mice. If the randomly allocated number corresponding to data point X was a 1

then the original measurement X would become X plus one standard deviation, or X plus two standard deviations etc., continuing up to X plus eight standard deviations, but if the randomly allocated number was 0 then the original measurement X would become X minus one standard deviation, or X minus two standard deviations, etc., continuing up to X minus eight standard deviations. In other words, eight artificial data sets were generated, the first by corrupting the original data set by one standard deviation, the second by corrupting the original data set by two standard deviations and so on up to eight standard deviations. The entire process from the random allocation of 1's or 0's to the production of the eight artificial data sets was repeated 30 times, generating a total of 240 artificial data sets consisting of 30 replicates for each of eight data sets. Each data set had a unique phenotype file with corrupted data and an original genotype and linkage map which were then applied to QTL mapping. We performed 240 QTL analyses using the corrupted data sets.

QTL mapping

Interval mapping was performed to detect any significant association between ear wound healing and marker loci in the F₂ sub-data sets (different population size) and artificial data sets (corrupted phenotypic data) using the MapQTL software version 4 (Wageningen, the Netherlands). The critical threshold values for significance of association were determined by the permutation test (Churchill and Doerge 1994; Van Ooijen 1999) to be a LOD score of ≥ 3.5 for significant linkage and ≥ 2.7 for suggestive linkage.

Data analysis

Computations were performed using the Statistica 5.1 (StatSoft Inc., Tulsa, OK) statistical package. The estimation of genetic variance used the difference between variances of different populations method in which the F₁, P₁ and P₂ populations are non-segregating populations whose variances (V_{F_1} , V_{P_1} and V_{P_2}) are purely due to environmental factors, while the F₂ population is a segregating population whose variance (V_{F_2}) is determined by the sum of the genotypic and environmental effects. Therefore, $V_{F_2} - (\frac{1}{2}V_{F_1} + \frac{1}{4}V_{P_1} + \frac{1}{4}V_{P_2})$ is an estimate of the genotypic variance. The broad-sense heritability is then estimated from:

$$\hat{H}^2 = \frac{V_{F_2} - (\frac{1}{2}V_{F_1} + \frac{1}{4}V_{P_1} + \frac{1}{4}V_{P_2})}{V_{F_2}}$$

The average variance from 30 randomly generated data sets (as described above) was used to estimate heritability. The coefficient of variation (CV = SD/Mean) was used to evaluate variation of peak LOD score and map position over 30 replicates.

Results

Effect of population size on QTL detection and localization

We found that the LOD scores decreased dramatically as the population size decreased (Figure 2). When the population size was reduced to 100 none of the four QTL were significant and when the population size was 300 only the large Sth9 QTL was significant (Table 1). The percentage decrease in the LOD score is a function of the population size and can be approximately expressed as $1 - n/N$, where N is the larger and n is the smaller population size. A comparison of the average percentages of decrease in the LOD score with the decrease of the LOD score predicted from the formula $(1 - n/N)$ showed no significant difference between the two data sets ($t = -0.13$, $p = 0.899$). This empirically derived formula can be proved theoretically since the expected LOD score can be approximated by $LOD_n = 0.217n\sigma_x^2 a^2/\sigma_e^2$ and $LOD_N = 0.217N\sigma_x^2 a^2/\sigma_e^2$ for population sizes n and N , respectively, where σ_x^2 is the variance of the genotypic indicator variable, a is the additive genetic effect and σ_e^2 is the residual variance. The percentage of LOD score reduction is defined as

$$\frac{LOD_N - LOD_n}{LOD_N} = \frac{1 - LOD_n}{LOD_N} = 1 - \frac{n}{N}$$

Thus, this 'empirical formula' is applicable to F₂-design mapping experiments in general. Using this formula the QTL LOD scores for the same phenotype but derived from different population sizes can be converted into an expected LOD score for a fixed population size. In addition, a minimum population size required for a LOD score of 3.5 (the significance threshold) for a particular QTL can be predicted based on the known population size and the LOD score for that QTL (Table 2).

The variation in the peak LOD score over 30 replicates increased with decreasing population size (Figure 3A), the effect being much more pronounced for a population size of less than 300 than it was for a population size of from 500 to 300. Smaller QTL generally have a greater variation in peak LOD score. Variation in peak position over 30 replicates shared a similar trend with that of the peak LOD score, though smaller in magnitude (Figure 3B).

Effect of phenotypic measurement on QTL detection and localization

The average LOD score plots for all 240 corrupted data sets are shown in Figure 4. Random deviation of one standard deviation (1 deviation unit) from the original data had little effect on QTL detection and localization compared to the original data set (Table 3). Variation among the 30 replicates was also negligible (data not shown). A deviation of three standard deviations from the original data reduced the heritability from the 89% estimated by Li *et al.* (2001) to 74% but all four QTL could still be detected. As

the number of standard deviations from the original phenotypic data increased small QTL became insignificant while the medium-sized QTL (Sth1) remained significant up to six standard deviations ($h^2 = 42\%$) and the largest QTL

(Sth9) remained significant up to eight standard deviations ($h^2 = 29\%$).

The decrease in peak LOD score was linearly related to the deviation of the phenotypic measurement, which can

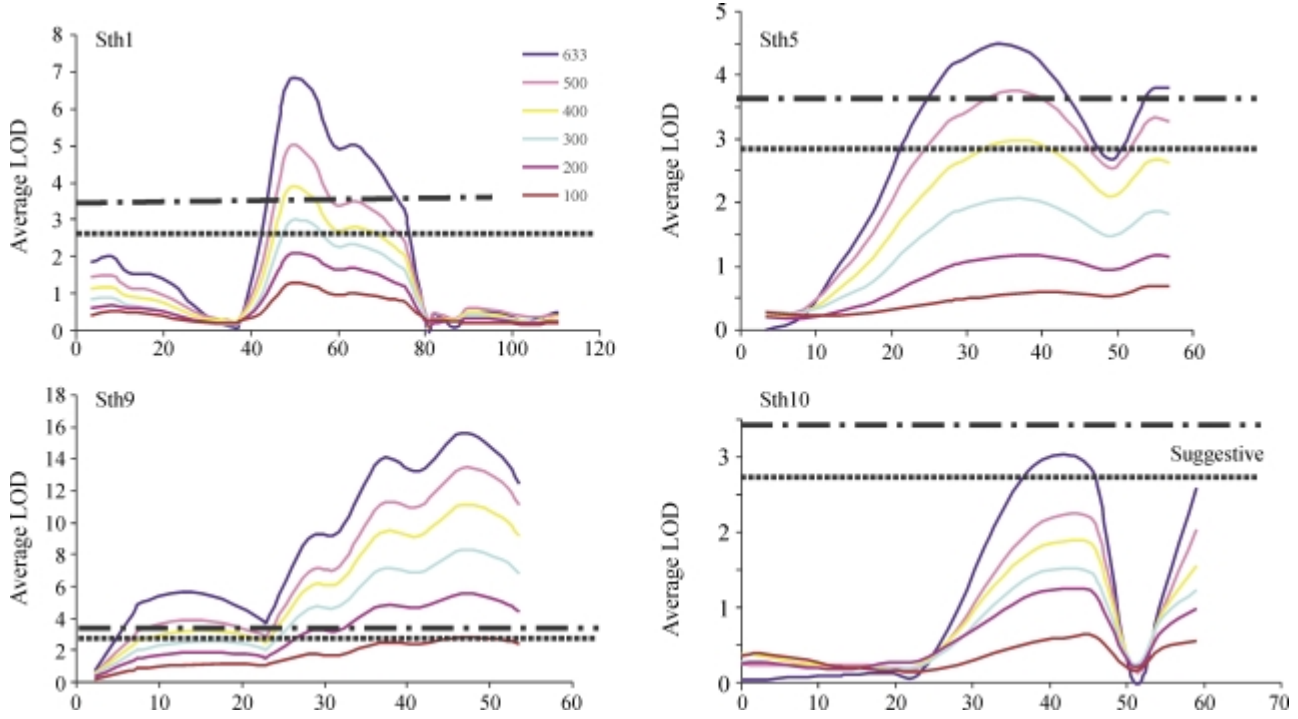


Figure 2 - Logarithm of the odd (LOD) score plots for four quantitative traits with different population sizes. Each individual quantitative trait loci (QTL) picture was the average LOD score plots of 30 replicates for each of the five different population sizes. For comparison the plot for each of the QTL from the original data set (blue line) is also included. Horizontal dashed lines indicate significant LOD thresholds and dotted lines presumptive LOD thresholds.

Table 1 - How the average peak logarithm of the odd (LOD) score decreases with decreasing population size^a

Quantitative trait locus (QTL)	Number of mice					
	633	500	400	300	200	100
Sth1	6.83	5.04 ± 1.65	3.88 ± 1.38	2.98 ± 1.46	2.09 ± 1.24	1.30 ± 0.90
Sth5	4.50	3.73 ± 1.59	2.95 ± 1.34	2.06 ± 1.03	1.16 ± 0.83	0.55 ± 0.52
Sth9	15.62	13.43 ± 2.81	11.07 ± 3.06	8.31 ± 2.55	5.55 ± 2.20	2.83 ± 1.36
Sth10	3.01	2.24 ± 1.08	1.89 ± 1.06	1.51 ± 0.87	1.24 ± 0.85	0.61 ± 0.49

^aData are expressed as means ± standard deviation (SD, n = 30). The threshold LOD score for significance was ≥ 3.5.

Table 2 - Comparison of the logarithm of the odd (LOD) scores for a population size of 500 with the LOD score converted to 500 from different sample sizes using the empirical formula $1 - n/N$, where n is the smaller and N the larger population size.

Quantitative trait locus (QTL)	LOD Score for 500 mice	Converted LOD score for this number of mice					Number of mice ^b required for a LOD score of 3.5
		100	200	300	400	633	
Sth1	5.0	6.5	5.2	5.0	4.9	5.4	350
Sth5	3.7	2.8	2.9	3.4	3.7	3.6	473
Sth9	13.4	14.1	13.9	13.9	13.8	12.3	130
Sth10	2.2	3.1	3.1	2.5	2.4	2.4	795
Average ^a	6.1	6.6	6.3	6.2	6.2	5.9	437

^aNo significant difference between any two of the average LOD scores by t-test.

^bPredicted from the LOD score for a population size of 500.

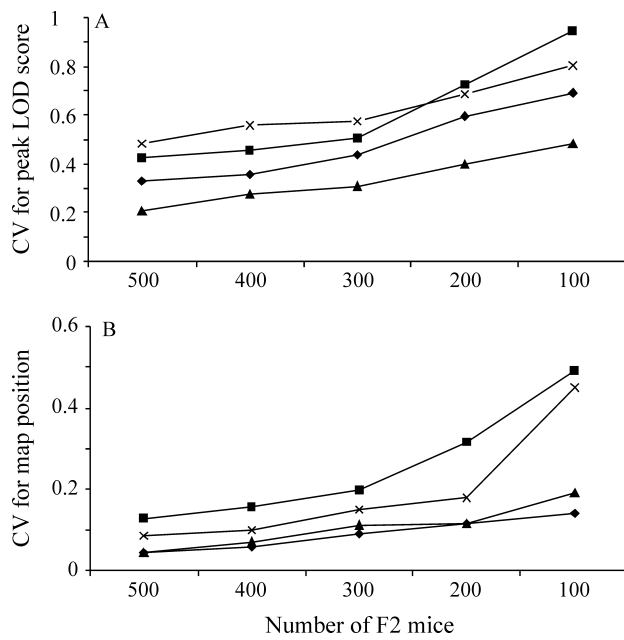


Figure 3 - Increase of variation in peak logarithm of the odd (LOD) score and quantitative trait loci (QTL) map position between replicates with a decrease in population size. (A) peak LOD score; (B) QTL map position. QTL map position refers to the map position corresponding to the peak LOD score. Variation is expressed as coefficient of variation (CV).

be expressed as $y = 0.0857 * x - 0.0608$, $R^2 = 0.9962$, where x is standard deviation and y is the percentage decrease in LOD score compared to the original data (Figure 5). This formula gave a decrease in LOD score of about 8.6% for each increase of one standard deviation (slope = 0.086). Concomitant with the decrease in LOD score, variation of the peak LOD score (CV) linearly increased as the error in phenotypic measurement was increased (Figure 6A). A nonlinear and small increase was also observed for the variation in chromosomal location (Figure 6B).

Comparison of the effect of population size with that of phenotypic measurement on QTL detection and localization

Our analysis shows that decreased population size had a much greater effect on the peak LOD score than increasing the number of standard deviations by which the data was corrupted (Figure 7). Corrupting the original phenotypic value by three standard deviations was equivalent to reducing the population size from 633 to 500, while six-and-a-half standard deviations was equivalent to reducing the population to 300. On average, decreasing the population by 50 mice had a similar effect on the LOD score as corrupting the phenotypic measurement by one standard deviation. In addition, the effect of phenotypic deviation on the variation of peak LOD score and QTL position over replicates was significantly smaller than that of reducing the population size (Figures 3 and 6).

Discussion

The purpose of this study was to provide a practical appraisal of the effect of population size and phenotypic measurement on QTL detection and localization and to provide an empirical guideline for future experimental design and data interpretation. Several interesting points emerged from this study that are worthy of discussion.

The mapping population used for such a study is a critical issue. We chose the (MRL/MpJ X SJL/J) F2 mapping population for several reasons: 1) the large population size of 633 F2 mice which is within the top 14% population size surveyed in the literature; 2) high marker density (119) which is almost saturated in this experiment. Further increase has little effect on the power of QTL detection (Piepho, 2000); 3) precise phenotypic measurement which has a coefficient of variation of 2.4% when the average hole size is 1.4 mm in diameter and 4.6% when the average size is 0.96 mm in diameter (Li *et al.*, 2001); and 4) wound healing is a typical quantitative trait controlled by multiple genes with complex gene-gene interactions (Masinde *et al.*, 2001). These features have made it a feasible population to evaluate the effect of sample size and phenotypic measurement on QTL detection and localization.

Table 3 - How the average peak logarithm of the odd (LOD) score decreases as the number of standard deviations (SD) used to corrupt the data increases. The original 21-day ear-hole measurement data were corrupted by adding to, or subtracting from, the phenotypic measurement 1, 2, 3, 4, 5, 6, 7 or 8 standard deviations (SD), previously determined to be 0.05 mm for a mean of 0.69 mm. (Li *et al.*, 2001).

Quantitative trait locus (QTL)	Uncorrupted data for 633 mice	Number of standard deviations (SD) used to corrupt the data							
		±1SD (7.2%) ^a	±2SD (14.5%) ^a	±3SD (22%) ^a	±4SD (29%) ^a	±5SD (36%) ^a	±6SD (43%) ^a	±7SD (51%) ^a	±8SD (58%) ^a
	LOD score	LOD score ^b							
Sth1	6.83	6.60 ± 0.30	6.12 ± 0.54	5.48 ± 0.72	4.80 ± 0.84	4.14 ± 0.90	3.55 ± 0.92	3.05 ± 0.92	2.62 ± 0.89
Sth5	4.50	4.40 ± 0.26	4.12 ± 0.48	3.74 ± 0.63	3.31 ± 0.72	2.90 ± 0.77	2.52 ± 0.77	2.19 ± 0.76	1.91 ± 0.73
Sth9	15.62	15.1 ± 0.55	13.9 ± 1.02	12.4 ± 1.35	10.8 ± 1.56	9.30 ± 1.66	7.93 ± 1.69	6.77 ± 1.68	5.79 ± 1.63
Sth10	3.01	3.02 ± 0.24	2.89 ± 0.45	2.68 ± 0.61	2.43 ± 0.72	2.17 ± 0.78	1.93 ± 0.81	1.71 ± 0.81	1.53 ± 0.80

^aPercentage deviation from the uncorrupted data for 633 mice.

^bData are expressed as means ± SD. n = 30. The threshold LOD score for significance was determined to be ≥ 3.5.

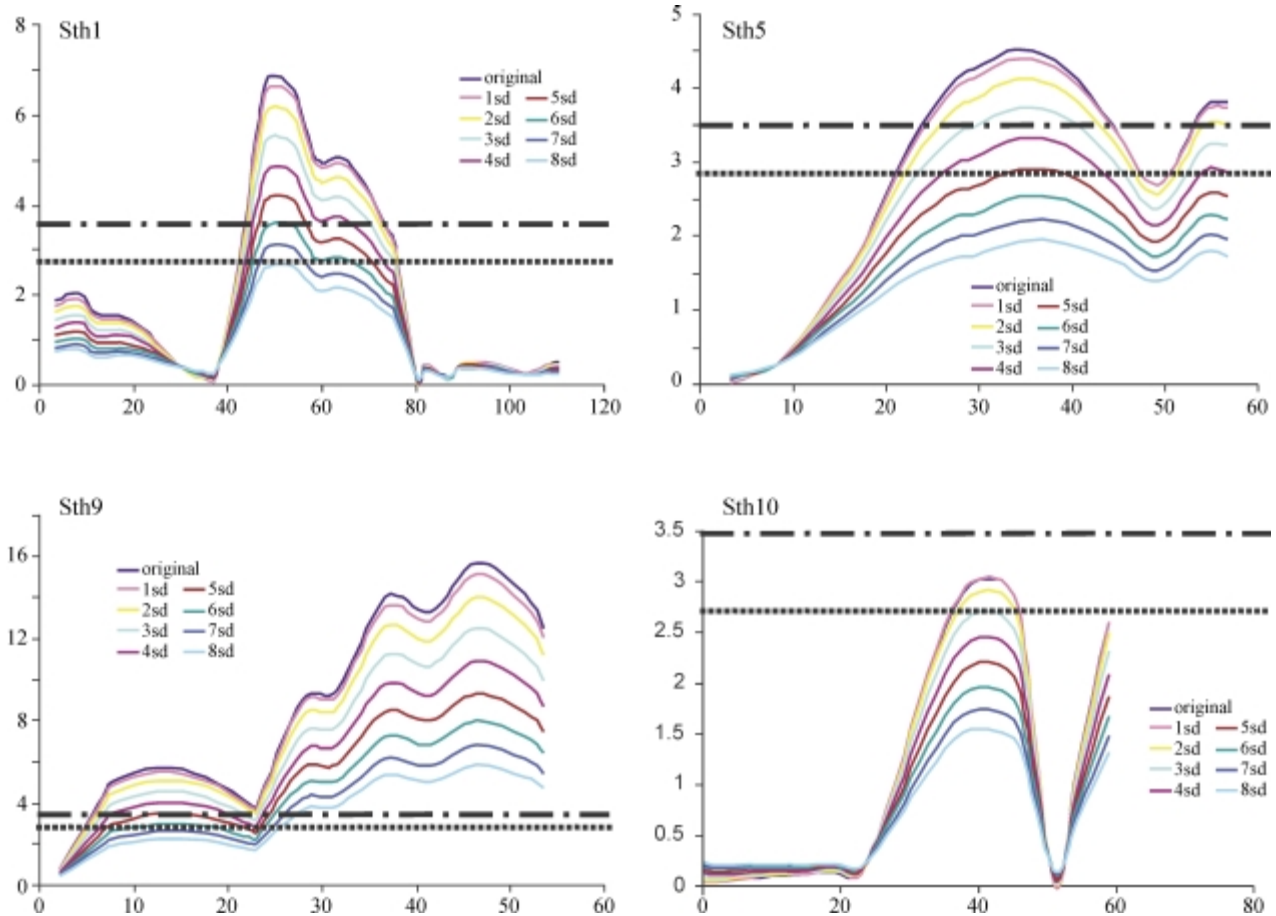


Figure 4 - Logarithm of the odd (LOD) score plots as error was systematically introduced into phenotypic measurement. Each individual quantitative trait loci (QTL) picture was the average LOD score plots of 30 replicates for each of the 8 data sets. For comparison the plot for each of the QTL from the original data set (blue line) is also included. Horizontal dashed lines indicate significant LOD thresholds and dotted lines presumptive LOD thresholds.

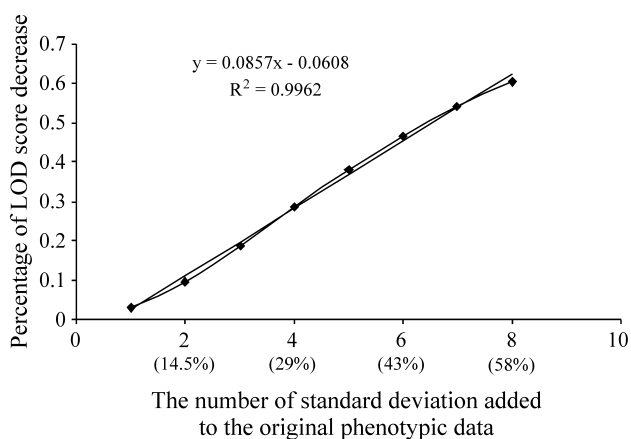


Figure 5 - The plot of the percentage logarithm of the odd (LOD) score decreases as error is systematically introduced into phenotypic measurement from the original data set. The number in the bracket on the x-axis represents the percentage deviation from the original phenotypic data.

Population size has a profound effect on the sensitivity of QTL detection and precision of QTL localization. Reduction in size is linearly associated with decreased LOD score. The percentage decrease can be empirically calcu-

lated from the expression: $1 - n/N$. This empirical formula was derived from the reduction of population size from 633 → 500 → 400 → 300 → 200 → 100. This range of size covers 77% of the mouse mapping experiments surveyed in this study. Because the LOD score is a function of population size, the traditional LOD score significance threshold (3.5) may be too high for small population. In such populations, medium-sized QTL could not reach the defined threshold of 3.5, resulting in an increased Type II error (not detecting a QTL when there is one). This has clearly been demonstrated in this study: none of the three highly significant QTL could be declared as significant at the LOD score of 3.5 when the population size was reduced from 633 to 100. A population size of 300 appears to be a turning point for sensitive and reliable detection of QTL (F2 design). Beyond this point, the medium effect QTL (Sth1) could not be detected and variation in QTL peak and map position was drastically increased. This empirical ‘threshold’ is much higher than theoretically calculated (Liu, 1997). This finding suggests that current mapping population sizes, which are driven by time and cost (over 60% of F2 mapping experiments used less than 300 mice in literature), seem to be

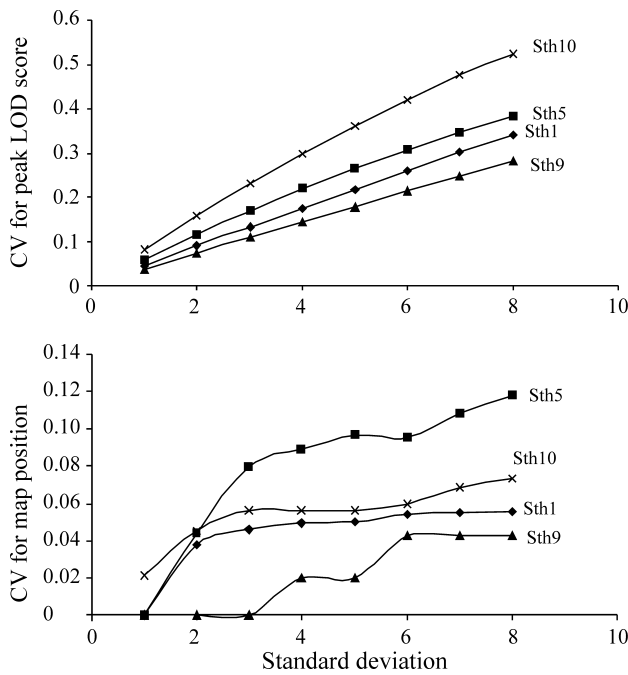


Figure 6 - Effect of variation in phenotype on peak logarithm of the odd (LOD) score and quantitative trait loci (QTL) map position. (A) peak LOD score; (B) QTL map position. Standard deviation (x-axis) shows the amount of error introduced into the measurement.

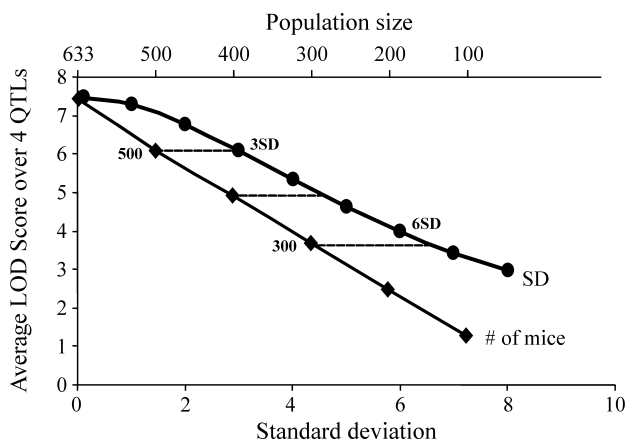


Figure 7 - Comparison of the effect of a decrease in population size on the average peak logarithm of the odd (LOD) score with that of increase of phenotype deviation (SD). The scales above the x-axis represent population size while below the x-axis they represent the number of standard deviations from the original measurement.

too small to be able to reliably detect even a medium-sized QTL.

Based on the quantitative relationship between LOD score and population size we established an empirical formula $(1 - n/N)$, where N is the larger and n the smaller sample size) which predicts the percentage sample-size dependent LOD score decrease. Because this empirical formula can be derived theoretically it should be generally applicable to other F2-design mapping studies. This formula can be used to estimate the expected LOD score for a spe-

cific population size (e.g. 500), which means that it can make the LOD scores of the QTL for the same phenotype comparable between different mouse mapping experiments and can also estimate the LOD score using a reasonable population size if there is a practical limitation in setting up a large mapping population, this attribute being particularly useful for mapping studies that are used for initial screening or for confirmation of previous studies.

Previously, it was not known how phenotypic measurement affects detection power and to address this question we conducted the study described in this paper in which we generated 8 artificial data sets by adding a constant level of noise to the original phenotypic data set (note that we did not simulate natural noise, a random event). We were rather surprised to find that the detection of QTL is highly tolerant of variation (or errors) in the phenotypic measurement. Increased phenotypic measurement error will lead to a decrease in heritability thereby affecting the power to detect QTL. For the data set analyzed in this study the average ear hole size (a phenotypic measurement) of 633 F2 mice at day 21 was 0.69 ± 0.05 mm, three standard deviations (± 0.15 mm) being equivalent to a 22% ($0.15/0.69 = 0.22$) deviation from the original measurements. This artificial noise reduced the heritability from 89% to 74% but did not significantly affect the four QTL measured. This observation suggests that there is a limited loss of detection power when measurement error increases within a certain heritability range which, in this study, was between 70% and 90%. Identification of the medium sized QTL (Sth1) when the data was corrupted by six standard deviations (a 43% deviation from the original data, heritability reduced to 42%) and the large QTL (Sth9) when the data was corrupted by eight standard deviations (a 58% deviation from the original data, heritability reduced to 29%) further suggests that virtually all quantitative traits can be applied to genetic mapping for identification of major quantitative trait loci, including those that are difficult to measure precisely and have low heritability.

We estimated that, in terms of QTL detection, the effect of reducing the population size by 50 mice is equivalent to a variation in phenotypic measurement of one standard deviation (i.e. 7.2% deviation from the original phenotypic value). If this empirical relationship can be extrapolated to other mapping populations, it can provide a convenient guide to select a cost- and time-effective compromise between increasing the F2 population size and improving the precision of quantitative trait measurement.

It should be noted that the empirical relationships reported here were established through one specific experiment (Masinde *et al.* 2001), which involves a particular genetic architecture governing the phenotype of interest. Robustness of these relationships across different genetic architecture deserves further evaluation. Thus, extrapolation of these empirical relationships to other mapping populations should be made with caution. Nevertheless, this

report represents the first attempt to use a real mapping experiment to quantitatively evaluate the effect of sample size and phenotypic measurement on major quantitative trait loci mapping efficiency. Our results could serve as a guide to design QTL mapping experiments and aid in the interpretation of results.

Acknowledgments

This work was supported by Assistance Award n. DAMD17-99-1-9571. The U.S. Army Medical Research Acquisition Activity, 820 Chandler Street, Fort Detrick MD 21702-5014, is the awarding and administering acquisition office. The information contained in this publication does not necessarily reflect the position or the policy of the Government of the United States and no official endorsement should be inferred. The authors would like to thank Heather Davidson for her excellent technical support.

References

- Belknap JK (1998) Effect of within-strain sample size on QTL detection and mapping using recombinant inbred mouse strains. *Behav Genet* 28:29-38.
- Churchill GA and Doerge RW (1994) Empirical threshold values for quantitative trait mapping. *Genetics* 138:963-971.
- Darvasi A and Soller M (1997) A simple method to calculate resolving power and confidence interval of QTL map location. *Behav Genet* 27:125-132.
- Darvasi A, Weinreb A, Minke V, Weller JL and Soller M (1993) Detecting marker-QTL linkage and estimating QTL gene effect and map location using a saturated genetic map. *Genetics* 134:943-951.
- Dupuis J and Siegmund D (1999) Statistical methods for mapping quantitative loci from a dense set of markers. *Genetics* 151:373-386.
- Frisch M, Bohn M and Melchinger AE (1999) Minimum sample size and optimal positioning of flanking markers in marker-assisted backcrossing for transfer of a target gene. *Crop Science* 39:967-975.
- Fischer G, Ibrahim SM, Brockmann GA, Pahnke J, Bartocci E, Thiesen HJ, Serrano-Fernandez P and Moller S (2003) Expressionview: Visualization of quantitative trait loci and gene-expression data in Ensembl. *Genome Biol* 4:R77.
- Flint J, Valdar W, Shifman S and Mott R (2005) Strategies for mapping and cloning quantitative trait genes in rodents. *Nat Rev Genet* 6:271-86.
- Lander E and Kruglyak L (1995) Genetics dissection of complex traits: Guidelines for interpreting and reporting linkage results. *Nat Genet* 11:241-247.
- Lander ES and Botstein D (1989) Mapping mendelian factors underlying quantitative traits using RFLP linkage maps. *Genetics* 121:185-199.
- Li X, Gu W, Masinde G, Hamilton-Ulland M, Xu S, Mohan S and Baylink D (2001) Genetic control of the rate of wound healing in mice. *Heredity* 86:668-674.
- Liu BH (1997) *Statistical Genomics: Linkage, Mapping and QTL Analysis*. CRC Press, Florida, pp 375.
- Masinde G, Li X, Gu W, Heather D, Mohan S and Baylink DJ (2001) Identification of wound healing/regeneration QTLs at multiple time points that explain seventy percent of variance in (MRL/MpJ X SJL/J) F₂ population. *Genome Research* 11:2027-2033.
- Piepho HP (2000) Optimal marker density for interval mapping in a backcross population. *Heredity* 84:437-440.
- Soller M, Genizi A and Brody T (1976) On the power of experimental designs for the detection of linkage between marker loci and quantitative loci in crosses between inbred lines. *Theor Appl Genet* 47:35-39.
- Van Ooijen JW (1999) LOD significance thresholds for QTL analysis in experimental populations of diploid species. *Heredity* 83:613-624.
- Vitt U, Gietzen D, Stevens K, Wingrove J, Becha S, Bulloch S, Burrill J, Chawla N, Chien J, Crawford M, Ison C, Kearney L, Kwong M, Park J, Policky J, Weiler M, White R, Xu Y, Daniels S, Jacob H, Jensen-Seaman MI, Lazar J, Stuve L and Schmidt J (2004) Identification of candidate disease genes by EST alignments, synteny, and expression and verification of Ensembl genes on rat chromosome 1q43-54. *Genome Res* 14:640-50.

Editor: Fábio de Melo Sene